



Childcare Sufficiency Assessment 2018

Early Years and Childcare Service

Childcare Sufficiency Assessment 2018

Foreword

The Childcare Act [2006](#) (sections 7, 12 and 13) and [2016](#) (sections 1 and 2) place a duty on every local authority to 'secure sufficient childcare, so far as is reasonably practicable, for working parents, or parents who are studying or training, for children aged 0-14 (or up to 18 for disabled children)'. Under these duties, Bristol City Council is required to undertake an annual childcare assessment and report this to Council Members to demonstrate that the duty is being met. This report provides an analysis of this assessment to inform decisions about Bristol's current or future childcare needs and is available for parents and providers to use.

Another of our duties is to monitor the quality of provision in our childcare settings as judged by Ofsted and it is a privilege to be able to report that 100.0% of Private and Maintained early years providers, 99% of registered childminders, 97% of Voluntary providers and 96% of our Out of School provision is currently rated good or better. Our Ofsted profile is strong and continues to improve, particularly for Childminders and Out of School providers who have improved by 31% and 35% respectively over the last five years. Bristol parents/carers can therefore be confident in the knowledge that whatever type of childcare provision they choose, their children will be able to access a high quality experience. For a more visual presentation of this success, please see page 7.

I am very grateful to the members of the Early Years' Service who have shown such dedication and commitment to gathering and collating this information.



Sally Jackle, OBE.
Head of Early Years
Bristol City Council



Introduction

This assessment shows a ward-by-ward overview of the childcare market as at December 2018 with a citywide summary at the end. A key to show you what each statistic shows and the data source is available on page 3. The Childcare market in every local authority changes on a frequent basis, not only as the academic year progresses but also as new providers of childcare open and close their businesses.

Throughout this document, there is a strong focus on the Free Early Education Entitlement (FEEE). The delivery of the FEEE through childcare providers to families in Bristol is governed by statutory guidance from the Department for Education (DfE) and covers three main areas:

- 15 hour entitlement for Eligible 2 year olds:
- 15 hour entitlement for parents of 3 and 4 year olds (the Universal Free Hours); and
- 30 hour entitlement for working parents of 3 and 4 year olds (the Extended Free Hours)

Further information about the FEEE can be found online in two documents:

https://assets.publishing.service.gov.uk/government/uploads/system/uploads/attachment_data/file/718179/Early_education_and_childcare-statutory_guidance.pdf

https://assets.publishing.service.gov.uk/government/uploads/system/uploads/attachment_data/file/718181/Early_years_entitlements-operational_guidance.pdf

About Bristol

- We have a population of about 459,300, the largest city in the South West.
- We are one of Great Britain's ten 'Core Cities'.
- Bristol's population is expected to reach half a million by 2027.
- We have more children under sixteen than people of pensionable age.

More information about Bristol can be found online:

<https://www.bristol.gov.uk/statistics-census-information/the-population-of-bristol>

Statistical Sources – 1

Population

Further Detail: A count of all live births by age range in mid 2017

Source: Office of National Statistics – Mid 2017

Eligible 2 Year Olds

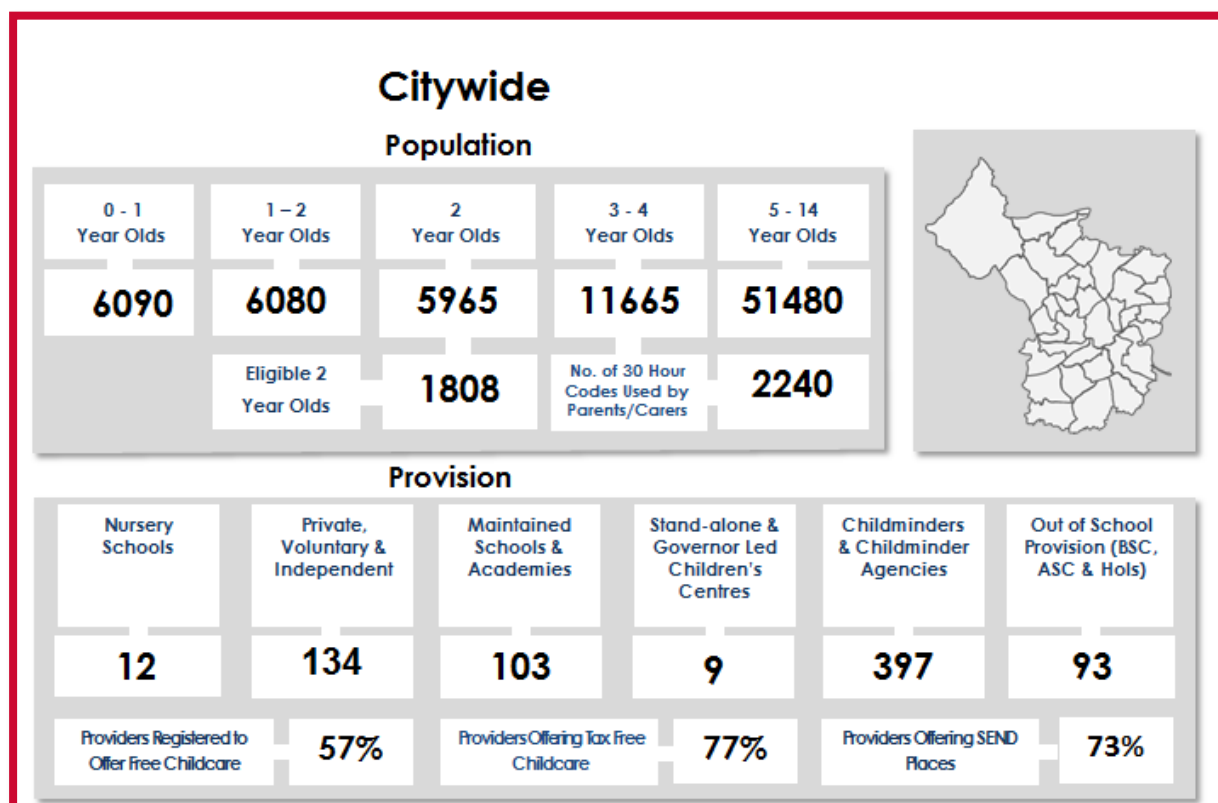
Further Detail: A count of all children whose parents are in receipt of eligible benefits.

Source: Department for Work and Pensions List Nov 2018

No. of 30 hour codes

Further Detail: The number of claims made for Extended hours using a 30 hour code by children who live in the ward.

Source: Autumn 2018 School Census and Early Years Headcount.



Provision

Further Detail: A breakdown of the type of provision who are offering childcare.

Source: Tribal Database of Bristol City Council.

Registered to offer Free Childcare

Further Detail: Percentage of providers who have registered to offer free childcare.

Source: EYES Database of Bristol City Council.

Registered to offer Tax Free Childcare (TFC)

Further Detail: Percentage of providers who have registered with HMRC to offer TFC.

Source: Provider Survey Dec 2018

Offering Special Educational Needs and Disability (SEND) places

Further Detail: Percentage of providers who will offer a place to a child with SEND.

Source: Provider Survey Dec 2018

Statistical Sources – 2

Definition of a 'Place'

All local authorities are funded by the DfE on a participation basis (i.e. on the number of places they report are occupied). **A 'place' is defined as 'childcare for 15 hours'.**

Definition of Term Time Only & All Year Round for Free Hours

Childcare providers are able to offer childcare over two operational methods:

- Term Time Only (TTO) – 15 hours over 38 weeks per year
- All Year Round (AYR) – 12 hours over 47.5 weeks per year

For the purposes of consistency, all statistics were converted to TTO for this assessment.

Places (*includes 30 Hours)

| Age Range | 0 - 2 Year Olds | 2 Year Olds | Free Places for 2 Year Olds | 3 - 4 Year Olds | Free Places for 3 - 4 Year Olds* | 5 - 14 Year Olds |
|--------------------------|--------------------|----------------|-----------------------------------|--------------------|--|--------------------------------|
| Places Provided | 4102 | 6799 | 1863 | 12155 | 6961 | 2968 |
| Places Being Used | 2762 | 4446 | 987 | 7362 | 6718 | No. of 30 Hour Codes in Use |
| Places Not Being Used | 1341 | 2353 | 873 | 4795 | 271 | 2310 |

Places Provided

Further Detail: A count of all live births by age range in mid 2017

Source: Provider Survey Dec 2018

Places Being Used

Further Detail: A count of all live births by age range in mid 2017

Source: Provider Survey Dec 2018

Places Not Being Used

Further Detail: A count of all live births by age range in mid 2017

Source: Provider Survey Dec 2018

What does it mean if the ward shows a minus number of places not being used?

This means that the ward is not sufficient for that age range at the time of the assessment.

How can a minus number be correct?

For the assessment we have to imagine that every child attends at the same time, whereas in reality they attend on different days at different sessions.

No. of 30 Hours Codes in Use

Further Detail: The number of claims made for Extended hours using a 30 hour code by providers in the ward.

Source: Source: Autumn 2018 School Census and Early Years Headcount.

Statistical Sources – 3

Average Charge (per hour)

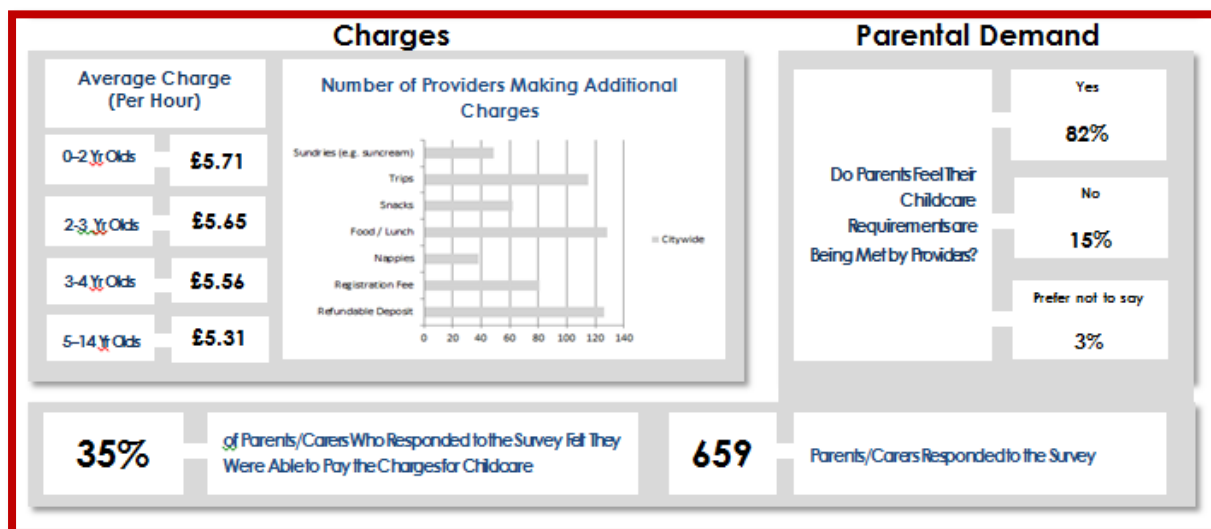
Further Detail: Mean average of charges for paid childcare

Source: Provider Survey Dec 2018

Additional Charges

Further Detail: A count of the number of providers who charge for each item, as permitted in the Statutory & Operational Guidance.

Source: Provider Survey Dec 2018



Parental Demand

Further Detail: The percentage of parents / carers who agreed, disagreed or opted not to say with regard to whether their childcare requirements were being met.

Source: Parent Survey Dec 2018

Childcare Affordability

Further Detail: The percentage of parents / carers who felt that their childcare charges were affordable.

Source: Parent Survey Dec 2018

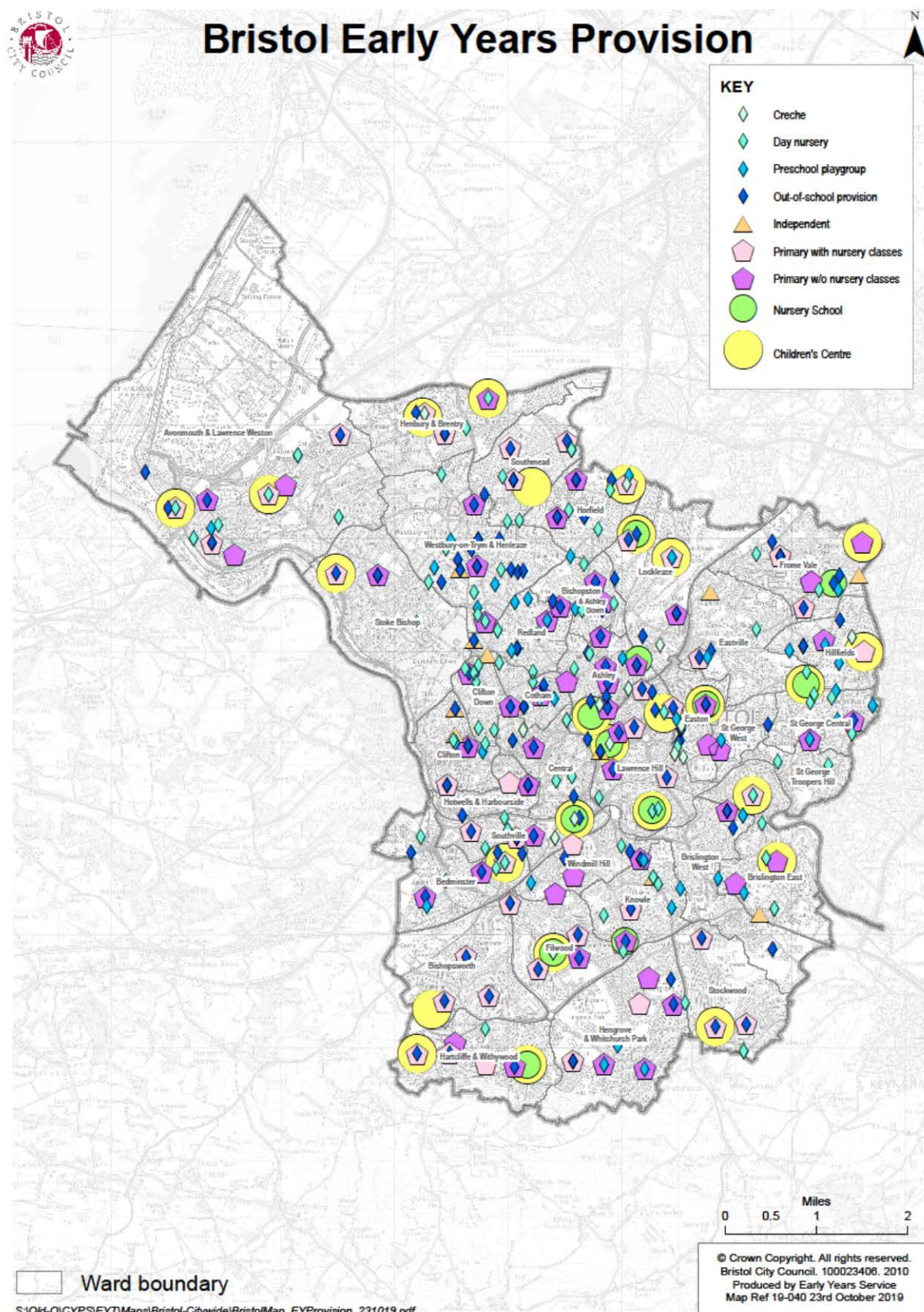
Number of Parents / Carers who Responded

Further Detail: The percentage of parents / carers who responded to the online survey.

Source: Parent Survey Dec 2018

Map of Bristol Early Years Provision

To open this PDF to see more detail – please double click anywhere on the map.

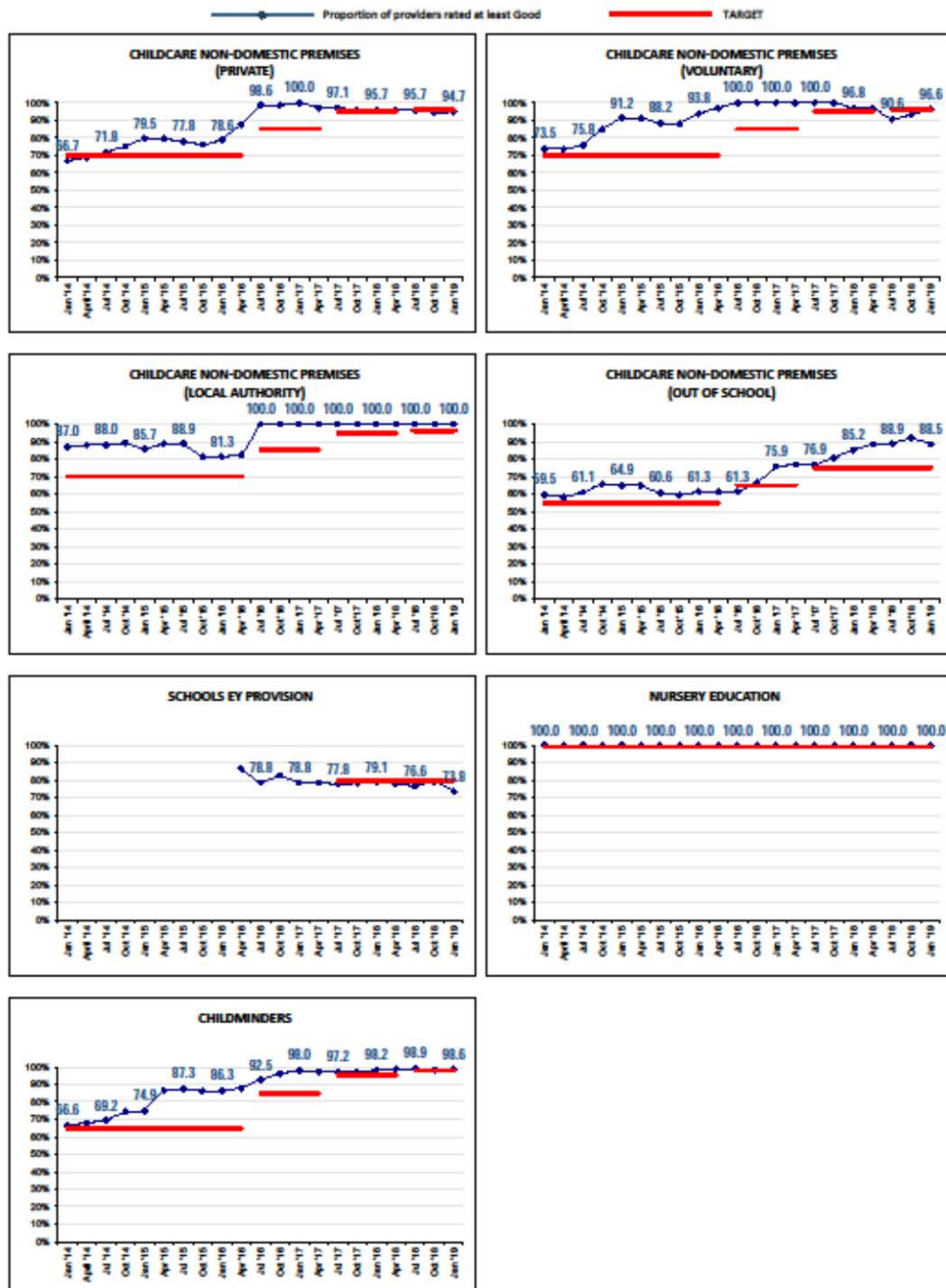


Early Years Ofsted Judgement Summary

To open this PDF to see more detail – please double click on any graph.

OFSTED: EARLY YEARS (Q2 2018/19)

Providers rated Good / Outstanding



Prepared by Early Years Service

October 2018

Ashley Ward

Population

| 0 - 1 Year Olds | 1 - 2 Year Olds | 2 Year Olds | 3 - 4 Year Olds | 5 - 14 Year Olds |
|-------------------------|--------------------|----------------|---|---------------------|
| 250 | 222 | 241 | 437 | 2128 |
| Eligible 2 Year Olds | | 78 | No. of 30 Hour Codes Used by Parents/Carers | 116 |



Provision

| Nursery Schools | Private, Voluntary & Independent | Maintained Schools & Academies | Stand-alone & Governor Led Children's Centres | Childminders & Childminder Agencies | Out of School Provision (BSC, ASC & Hols) |
|---|--|--|--|---|---|
| 2 | 4 | 6 | 0 | 19 | 2 |
| Providers Registered to Offer Free Childcare | 51% | Providers Offering Tax Free Childcare | 50% | Providers Offering SEND Places | 100% |

Places (*includes 30 Hours)

| Age Range | 0 - 2 Year Olds | 2 Year Olds | Free Places for 2 Year Olds | 3 - 4 Year Olds | Free Places for 3 - 4 Year Olds* | 5 - 14 Year Olds |
|--------------------------|--------------------|----------------|-----------------------------------|--------------------|--|--------------------------------|
| Places Provided | 81 | 210 | 117 | 481 | 499 | 101 |
| Places Being Used | 61 | 166 | 59 | 389 | 301 | No. of 30 Hour Codes in Use |
| Places Not Being Used | 20 | 44 | 58 | 92 | 198 | 70 |

Charges

| Average Charge (Per Hour) | Number of Providers Making Additional Charges |
|------------------------------|--|
| 0-2YrOlds £6.34 | |
| 2-3 YrOlds £6.36 | |
| 3-4YrOlds £6.62 | |
| 5-14YrOlds £5.24 | |

Parental Demand

| | |
|--|-----|
| Do Parents / Carers Feel Their Childcare Requirements are Being Met by Providers? | Yes |
| | 50% |
| | No |
| | 0% |
| Prefer not to say | |
| 50% | |

100%

of Parents/Carers Who Responded to the Survey Felt They
Were Able to Pay the Charges for Childcare

2

Parents/Carers Responded to the Survey

Avonmouth and Lawrence Weston Ward

Population

| 0 - 1 Year Olds | 1 - 2 Year Olds | 2 Year Olds | 3 - 4 Year Olds | 5 - 14 Year Olds |
|-------------------------|--------------------|----------------|---|---------------------|
| 312 | 317 | 321 | 663 | 2788 |
| Eligible 2 Year Olds | | 129 | No. of 30 Hour Codes Used by Parents/Carers | 123 |



Provision

| Nursery Schools | Private, Voluntary & Independent | Maintained Schools & Academies | Stand-alone & Governor Led Children's Centres | Childminders & Childminder Agencies | Out of School Provision (BSC, ASC & Hols) |
|---|--|--|--|---|---|
| 0 | 6 | 7 | 2 | 22 | 6 |
| Providers Registered to Offer Free Childcare | 60% | Providers Offering Tax Free Childcare | 83% | Providers Offering SEND Places | 78% |

Places (*includes 30 Hours)

| Age Range | 0 - 2 Year Olds | 2 Year Olds | Free Places for 2 Year Olds | 3 - 4 Year Olds | Free Places for 3 - 4 Year Olds* | 5 - 14 Year Olds |
|--------------------------|--------------------|----------------|-----------------------------------|--------------------|--|--------------------------------|
| Places Provided | 354 | 474 | 155 | 584 | 259 | 24 |
| Places Being Used | 101 | 221 | 47 | 254 | 336 | No. of 30 Hour Codes in Use |
| Places Not Being Used | 253 | 253 | 108 | 330 | -77 | 97 |

Charges

| Average Charge (Per Hour) | Number of Providers Making Additional Charges |
|------------------------------|--|
| 0-2YrOlds £5.39 | |
| 2-3 YrOlds £5.17 | |
| 3-4YrOlds £5.10 | |
| 5-14YrOlds £5.07 | |
| | |

Parental Demand

| | |
|--|-------------------|
| Do Parents / Carers Feel Their Childcare Requirements are Being Met by Providers? | Yes |
| | 36% |
| | No |
| | 9% |
| | Prefer not to say |
| | 55% |

70%

of Parents/Carers Who Responded to the Survey Felt They
Were Able to Pay the Charges for Childcare

40

Parents/Carers Responded to the Survey

Bedminster Ward

Population

| 0 - 1 Year Olds | 1 - 2 Year Olds | 2 Year Olds | 3 - 4 Year Olds | 5 - 14 Year Olds |
|-------------------------|--------------------|----------------|---|---------------------|
| 172 | 153 | 143 | 250 | 1094 |
| Eligible 2 Year Olds | | 27 | No. of 30 Hour Codes Used by Parents/Carers | 71 |



Provision

| Nursery Schools | Private, Voluntary & Independent | Maintained Schools & Academies | Stand-alone & Governor Led Children's Centres | Childminders & Childminder Agencies | Out of School Provision (BSC, ASC & Hols) |
|---|--|--|--|---|---|
| 0 | 4 | 4 | 1 | 17 | 3 |
| Providers Registered to Offer Free Childcare | 48% | Providers Offering Tax Free Childcare | 80% | Providers Offering SEND Places | 71% |

Places (*includes 30 Hours)

| Age Range | 0 - 2 Year Olds | 2 Year Olds | Free Places for 2 Year Olds | 3 - 4 Year Olds | Free Places for 3 - 4 Year Olds* | 5 - 14 Year Olds |
|--------------------------|--------------------|----------------|-----------------------------------|--------------------|--|--------------------------------|
| Places Provided | 60 | 210 | 57 | 245 | 158 | 1 |
| Places Being Used | 53 | 99 | 19 | 132 | 99 | No. of 30 Hour Codes in Use |
| Places Not Being Used | 7 | 111 | 38 | 113 | 59 | 41 |

Charges

| Average Charge (Per Hour) | | Number of Providers Making Additional Charges | |
|------------------------------|-------|--|--|
| 0-2YrOlds | £6.53 | | |
| 2-3 YrOlds | £5.63 | | |
| 3-4YrOlds | £5.96 | | |
| 5-14YrOlds | £6.00 | | |

Parental Demand

| | |
|--|-------------------|
| Do Parents / Carers Feel Their Childcare Requirements are Being Met by Providers? | Yes |
| | 41% |
| | No |
| | 18% |
| | Prefer not to say |
| | 41% |

70%

of Parents/Carers Who Responded to the Survey Felt They
Were Able to Pay the Charges for Childcare

33

Parents/Carers Responded to the Survey

Bishopston and Ashley Down Ward

Population

| 0 - 1 Year Olds | 1 - 2 Year Olds | 2 Year Olds | 3 - 4 Year Olds | 5 - 14 Year Olds |
|-------------------------|--------------------|----------------|---|---------------------|
| 213 | 183 | 212 | 348 | 1349 |
| Eligible 2 Year Olds | | 7 | No. of 30 Hour Codes Used by Parents/Carers | 96 |



Provision

| Nursery Schools | Private, Voluntary & Independent | Maintained Schools & Academies | Stand-alone & Governor Led Children's Centres | Childminders & Childminder Agencies | Out of School Provision (BSC, ASC & Hols) |
|---|--|--|--|---|---|
| 0 | 5 | 2 | 0 | 14 | 1 |
| Providers Registered to Offer Free Childcare | 59% | Providers Offering Tax Free Childcare | 100% | Providers Offering SEND Places | 78% |

Places (*includes 30 Hours)

| Age Range | 0 - 2 Year Olds | 2 Year Olds | Free Places for 2 Year Olds | 3 - 4 Year Olds | Free Places for 3 - 4 Year Olds* | 5 - 14 Year Olds |
|--------------------------|--------------------|----------------|-----------------------------------|--------------------|--|--------------------------------|
| Places Provided | 99 | 95 | 10 | 247 | 127 | 58 |
| Places Being Used | 89 | 79 | 0 | 168 | 88 | No. of 30 Hour Codes in Use |
| Places Not Being Used | 10 | 16 | 10 | 79 | 39 | 46 |

Charges

| Average Charge (Per Hour) | | Number of Providers Making Additional Charges | |
|------------------------------|-------|---|--|
| 0-2YrOlds | £6.66 | | |
| 2-3 YrOlds | £6.02 | | |
| 3-4YrOlds | £5.61 | | |
| 5-14YrOlds | £4.70 | | |

Parental Demand

| | |
|--|-------------------|
| Do Parents / Carers Feel Their Childcare Requirements are Being Met by Providers? | Yes |
| | 67% |
| | No |
| | 0% |
| | Prefer not to say |
| | 33% |

76%

of Parents/Carers Who Responded to the Survey Felt They
Were Able to Pay the Charges for Childcare

25

Parents/Carers Responded to the Survey

Bishopsworth Ward

Population

| 0 - 1 Year Olds | 1 - 2 Year Olds | 2 Year Olds | 3 - 4 Year Olds | 5 - 14 Year Olds |
|-------------------------|--------------------|----------------|---|---------------------|
| 152 | 157 | 169 | 261 | 1342 |
| Eligible 2 Year Olds | | 27 | No. of 30 Hour Codes Used by Parents/Carers | 36 |



Provision

| Nursery Schools | Private, Voluntary & Independent | Maintained Schools & Academies | Stand-alone & Governor Led Children's Centres | Childminders & Childminder Agencies | Out of School Provision (BSC, ASC & Hols) |
|---|--|--|--|---|---|
| 0 | 0 | 3 | 0 | 19 | 2 |
| Providers Registered to Offer Free Childcare | 67% | Providers Offering Tax Free Childcare | 90% | Providers Offering SEND Places | 38% |

Places (*includes 30 Hours)

| Age Range | 0 - 2 Year Olds | 2 Year Olds | Free Places for 2 Year Olds | 3 - 4 Year Olds | Free Places for 3 - 4 Year Olds* | 5 - 14 Year Olds |
|--------------------------|--------------------|----------------|-----------------------------------|--------------------|--|--------------------------------|
| Places Provided | 45 | 51 | 9 | 106 | 73 | 50 |
| Places Being Used | 23 | 31 | 4 | 83 | 170 | No. of 30 Hour Codes in Use |
| Places Not Being Used | 22 | 20 | 5 | 23 | -97 | 19 |

Charges

| Average Charge (Per Hour) | | Number of Providers Making Additional Charges | |
|------------------------------|-------|--|--|
| 0-2YrOlds | £4.92 | | |
| 2-3 YrOlds | £4.92 | | |
| 3-4YrOlds | £5.00 | | |
| 5-14YrOlds | £5.25 | | |

Parental Demand

| | |
|--|-----|
| Do Parents / Carers Feel Their Childcare Requirements are Being Met by Providers? | Yes |
| | 33% |
| | No |
| | 0% |
| Prefer not to say | |
| 67% | |

85%

of Parents/Carers Who Responded to the Survey Felt They
Were Able to Pay the Charges for Childcare

13

Parents/Carers Responded to the Survey

Brislington East Ward

Population

| 0 - 1 Year Olds | 1 - 2 Year Olds | 2 Year Olds | 3 - 4 Year Olds | 5 - 14 Year Olds |
|-------------------------|--------------------|----------------|---|---------------------|
| 216 | 201 | 182 | 356 | 1371 |
| Eligible 2 Year Olds | | 52 | No. of 30 Hour Codes Used by Parents/Carers | 68 |



Provision

| Nursery Schools | Private, Voluntary & Independent | Maintained Schools & Academies | Stand-alone & Governor Led Children's Centres | Childminders & Childminder Agencies | Out of School Provision (BSC, ASC & Hols) |
|---|--|--|--|---|---|
| 0 | 6 | 3 | 1 | 15 | 1 |
| Providers Registered to Offer Free Childcare | 58% | Providers Offering Tax Free Childcare | 75% | Providers Offering SEND Places | 60% |

Places (*includes 30 Hours)

| Age Range | 0 - 2 Year Olds | 2 Year Olds | Free Places for 2 Year Olds | 3 - 4 Year Olds | Free Places for 3 - 4 Year Olds* | 5 - 14 Year Olds |
|--------------------------|--------------------|----------------|-----------------------------------|--------------------|--|--------------------------------|
| Places Provided | 211 | 217 | 58 | 357 | 122 | 298 |
| Places Being Used | 95 | 154 | 30 | 223 | 154 | No. of 30 Hour Codes in Use |
| Places Not Being Used | 116 | 63 | 28 | 134 | -32 | 54 |

Charges

| Average Charge (Per Hour) | | Number of Providers Making Additional Charges | |
|------------------------------|-------|--|--|
| 0-2YrOlds | £5.26 | | |
| 2-3 YrOlds | £5.10 | | |
| 3-4YrOlds | £4.88 | | |
| 5-14YrOlds | £4.33 | | |

Parental Demand

| | |
|--|-----|
| Do Parents / Carers Feel Their Childcare Requirements are Being Met by Providers? | Yes |
| | 46% |
| | No |
| | 23% |
| Prefer not to say | |
| 31% | |

83%

of Parents/Carers Who Responded to the Survey Felt They
Were Able to Pay the Charges for Childcare

23

Parents/Carers Responded to the Survey

Brislington West Ward

Population

| 0 - 1 Year Olds | 1 - 2 Year Olds | 2 Year Olds | 3 - 4 Year Olds | 5 - 14 Year Olds |
|-------------------------|--------------------|----------------|---|---------------------|
| 169 | 196 | 129 | 327 | 1197 |
| Eligible 2 Year Olds | | 30 | No. of 30 Hour Codes Used by Parents/Carers | 65 |



Provision

| Nursery Schools | Private, Voluntary & Independent | Maintained Schools & Academies | Stand-alone & Governor Led Children's Centres | Childminders & Childminder Agencies | Out of School Provision (BSC, ASC & Hols) |
|---|--|--|--|---|---|
| 0 | 2 | 1 | 0 | 14 | 1 |
| Providers Registered to Offer Free Childcare | 61% | Providers Offering Tax Free Childcare | 100% | Providers Offering SEND Places | 60% |

Places (*includes 30 Hours)

| Age Range | 0 - 2 Year Olds | 2 Year Olds | Free Places for 2 Year Olds | 3 - 4 Year Olds | Free Places for 3 - 4 Year Olds* | 5 - 14 Year Olds |
|--------------------------|--------------------|----------------|-----------------------------------|--------------------|--|--------------------------------|
| Places Provided | 13 | 9 | 0 | 144 | 110 | 17 |
| Places Being Used | 9 | 9 | 0 | 116 | 100 | No. of 30 Hour Codes in Use |
| Places Not Being Used | 4 | 0 | 0 | 28 | 10 | 45 |

Charges

| Average Charge (Per Hour) | Number of Providers Making Additional Charges |
|------------------------------|--|
| 0-2YrOlds £5.00 | |
| 2-3 YrOlds £5.00 | |
| 3-4YrOlds £5.04 | |
| 5-14YrOlds £5.08 | |
| | |

Parental Demand

| | |
|--|-------------------|
| Do Parents / Carers Feel Their Childcare Requirements are Being Met by Providers? | Yes |
| | 35% |
| | No |
| | 12% |
| | Prefer not to say |
| | 53% |

100%

of Parents/Carers Who Responded to the Survey Felt They
Were Able to Pay the Charges for Childcare

21

Parents/Carers Responded to the Survey

Central Ward

Population

| 0 - 1 Year Olds | 1 - 2 Year Olds | 2 Year Olds | 3 - 4 Year Olds | 5 - 14 Year Olds |
|-------------------------|--------------------|----------------|---|---------------------|
| 111 | 96 | 91 | 174 | 655 |
| Eligible 2 Year Olds | | 45 | No. of 30 Hour Codes Used by Parents/Carers | 28 |



Provision

| Nursery Schools | Private, Voluntary & Independent | Maintained Schools & Academies | Stand-alone & Governor Led Children's Centres | Childminders & Childminder Agencies | Out of School Provision (BSC, ASC & Hols) |
|---|--|--|--|---|---|
| 1 | 5 | 2 | 0 | 4 | 3 |
| Providers Registered to Offer Free Childcare | 53% | Providers Offering Tax Free Childcare | 100% | Providers Offering SEND Places | 83% |

Places (*includes 30 Hours)

| Age Range | 0 - 2 Year Olds | 2 Year Olds | Free Places for 2 Year Olds | 3 - 4 Year Olds | Free Places for 3 - 4 Year Olds* | 5 - 14 Year Olds |
|--------------------------|--------------------|----------------|-----------------------------------|--------------------|--|--------------------------------|
| Places Provided | 277 | 306 | 38 | 390 | 148 | 0 |
| Places Being Used | 226 | 245 | 34 | 278 | 182 | No. of 30 Hour Codes in Use |
| Places Not Being Used | 51 | 62 | 4 | 112 | -33 | 62 |

Charges

| Average Charge (Per Hour) | | Number of Providers Making Additional Charges | |
|------------------------------|-------|--|--|
| 0-2YrOlds | £6.10 | | |
| 2-3 YrOlds | £6.38 | | |
| 3-4YrOlds | £6.13 | | |
| 5-14YrOlds | £0.00 | | |
| | | | |

Parental Demand

| | |
|--|-------------------|
| Do Parents / Carers Feel Their Childcare Requirements are Being Met by Providers? | Yes |
| | 0% |
| | No |
| | 0% |
| | Prefer not to say |
| | 100% |

50%

of Parents/Carers Who Responded to the Survey Felt They
Were Able to Pay the Charges for Childcare

4

Parents/Carers Responded to the Survey

Clifton Ward

Population

| 0 - 1 Year Olds | 1 - 2 Year Olds | 2 Year Olds | 3 - 4 Year Olds | 5 - 14 Year Olds |
|-------------------------|--------------------|----------------|---|---------------------|
| 82 | 69 | 54 | 113 | 773 |
| Eligible 2 Year Olds | | 10 | No. of 30 Hour Codes Used by Parents/Carers | 24 |



Provision

| Nursery Schools | Private, Voluntary & Independent | Maintained Schools & Academies | Stand-alone & Governor Led Children's Centres | Childminders & Childminder Agencies | Out of School Provision (BSC, ASC & Hols) |
|---|--|--|--|---|---|
| 0 | 5 | 2 | 0 | 2 | 3 |
| Providers Registered to Offer Free Childcare | 42% | Providers Offering Tax Free Childcare | 60% | Providers Offering SEND Places | 83% |

Places (*includes 30 Hours)

| Age Range | 0 - 2 Year Olds | 2 Year Olds | Free Places for 2 Year Olds | 3 - 4 Year Olds | Free Places for 3 - 4 Year Olds* | 5 - 14 Year Olds |
|--------------------------|--------------------|----------------|-----------------------------------|--------------------|--|--------------------------------|
| Places Provided | 100 | 254 | 12 | 683 | 162 | 26 |
| Places Being Used | 43 | 67 | 2 | 189 | 102 | No. of 30 Hour Codes in Use |
| Places Not Being Used | 57 | 187 | 10 | 494 | 60 | 36 |

Charges

| Average Charge (Per Hour) | | Number of Providers Making Additional Charges | |
|------------------------------|-------|--|--|
| 0-2YrOlds | £7.00 | | |
| 2-3 YrOlds | £6.67 | | |
| 3-4YrOlds | £5.90 | | |
| 5-14YrOlds | £3.60 | | |

Parental Demand

| | |
|--|-------------------|
| Do Parents / Carers Feel Their Childcare Requirements are Being Met by Providers? | Yes |
| | 0% |
| | No |
| | 0% |
| | Prefer not to say |
| | 100% |

67%

of Parents/Carers Who Responded to the Survey Felt They
Were Able to Pay the Charges for Childcare

6

Parents/Carers Responded to the Survey

Clifton Down Ward

Population

| 0 - 1 Year Olds | 1 - 2 Year Olds | 2 Year Olds | 3 - 4 Year Olds | 5 - 14 Year Olds |
|-------------------------|--------------------|----------------|---|---------------------|
| 90 | 64 | 52 | 126 | 485 |
| Eligible 2 Year Olds | | 3 | No. of 30 Hour Codes Used by Parents/Carers | 22 |



Provision

| Nursery Schools | Private, Voluntary & Independent | Maintained Schools & Academies | Stand-alone & Governor Led Children's Centres | Childminders & Childminder Agencies | Out of School Provision (BSC, ASC & Hols) |
|---|--|--|--|---|---|
| 0 | 5 | 2 | 0 | 3 | 2 |
| Providers Registered to Offer Free Childcare | 83% | Providers Offering Tax Free Childcare | 88% | Providers Offering SEND Places | 88% |

Places (*includes 30 Hours)

| Age Range | 0 - 2 Year Olds | 2 Year Olds | Free Places for 2 Year Olds | 3 - 4 Year Olds | Free Places for 3 - 4 Year Olds* | 5 - 14 Year Olds |
|--------------------------|--------------------|----------------|-----------------------------------|--------------------|--|--------------------------------|
| Places Provided | 598 | 617 | 22 | 731 | 637 | 1 |
| Places Being Used | 474 | 453 | 4 | 594 | 225 | No. of 30 Hour Codes in Use |
| Places Not Being Used | 124 | 164 | 18 | 138 | 412 | 122 |

Charges

| Average Charge (Per Hour) | Number of Providers Making Additional Charges |
|------------------------------|--|
| 0-2YrOlds £6.28 | |
| 2-3 YrOlds £6.13 | |
| 3-4YrOlds £5.75 | |
| 5-14YrOlds £8.75 | |
| | |

Parental Demand

| | |
|--|-------------------|
| Do Parents / Carers Feel Their Childcare Requirements are Being Met by Providers? | Yes |
| | 0% |
| | No |
| | 25% |
| | Prefer not to say |
| | 75% |

83%

of Parents/Carers Who Responded to the Survey Felt They
Were Able to Pay the Charges for Childcare

6

Parents/Carers Responded to the Survey

Cotham Ward

Population

| 0 - 1 Year Olds | 1 - 2 Year Olds | 2 Year Olds | 3 - 4 Year Olds | 5 - 14 Year Olds |
|-------------------------|--------------------|----------------|---|---------------------|
| 83 | 79 | 56 | 142 | 682 |
| Eligible 2 Year Olds | | 6 | No. of 30 Hour Codes Used by Parents/Carers | 27 |



Provision

| Nursery Schools | Private, Voluntary & Independent | Maintained Schools & Academies | Stand-alone & Governor Led Children's Centres | Childminders & Childminder Agencies | Out of School Provision (BSC, ASC & Hols) |
|---|--|--|--|---|---|
| 0 | 5 | 1 | 0 | 1 | 2 |
| Providers Registered to Offer Free Childcare | 67% | Providers Offering Tax Free Childcare | 83% | Providers Offering SEND Places | 67% |

Places (*includes 30 Hours)

| Age Range | 0 - 2 Year Olds | 2 Year Olds | Free Places for 2 Year Olds | 3 - 4 Year Olds | Free Places for 3 - 4 Year Olds* | 5 - 14 Year Olds |
|--------------------------|--------------------|----------------|-----------------------------------|--------------------|--|--------------------------------|
| Places Provided | 219 | 251 | 13 | 280 | 73 | 0 |
| Places Being Used | 197 | 207 | 5 | 269 | 214 | No. of 30 Hour Codes in Use |
| Places Not Being Used | 22 | 44 | 8 | 12 | -142 | 102 |

Charges

| Average Charge (Per Hour) | Number of Providers Making Additional Charges |
|------------------------------|--|
| 0-2YrOlds £6.46 | |
| 2-3 YrOlds £6.16 | |
| 3-4YrOlds £6.91 | |
| 5-14YrOlds £0.00 | |

Parental Demand

| | |
|--|-----|
| Do Parents / Carers Feel Their Childcare Requirements are Being Met by Providers? | Yes |
| | 0% |
| | No |
| | 0% |
| Prefer not to say | |
| 0% | |

0%

of Parents/Carers Who Responded to the Survey Felt They
Were Able to Pay the Charges for Childcare

0

Parents/Carers Responded to the Survey

Easton Ward

Population

| 0 - 1 Year Olds | 1 - 2 Year Olds | 2 Year Olds | 3 - 4 Year Olds | 5 - 14 Year Olds |
|-------------------------|--------------------|----------------|---|---------------------|
| 237 | 231 | 217 | 437 | 1612 |
| Eligible 2 Year Olds | | 57 | No. of 30 Hour Codes Used by Parents/Carers | 85 |



Provision

| Nursery Schools | Private, Voluntary & Independent | Maintained Schools & Academies | Stand-alone & Governor Led Children's Centres | Childminders & Childminder Agencies | Out of School Provision (BSC, ASC & Hols) |
|---|--|--|--|---|---|
| 1 | 3 | 2 | 0 | 16 | 3 |
| Providers Registered to Offer Free Childcare | 46% | Providers Offering Tax Free Childcare | 75% | Providers Offering SEND Places | 63% |

Places (*includes 30 Hours)

| Age Range | 0 - 2 Year Olds | 2 Year Olds | Free Places for 2 Year Olds | 3 - 4 Year Olds | Free Places for 3 - 4 Year Olds* | 5 - 14 Year Olds |
|--------------------------|--------------------|----------------|-----------------------------------|--------------------|--|--------------------------------|
| Places Provided | 76 | 117 | 42 | 300 | 234 | 9 |
| Places Being Used | 63 | 108 | 29 | 283 | 214 | No. of 30 Hour Codes in Use |
| Places Not Being Used | 13 | 9 | 13 | 17 | 20 | 68 |

Charges

| Average Charge (Per Hour) | Number of Providers Making Additional Charges |
|------------------------------|--|
| 0-2YrOlds £5.45 | |
| 2-3 YrOlds £5.58 | |
| 3-4YrOlds £5.48 | |
| 5-14YrOlds £5.74 | |

Parental Demand

| | |
|--|-----|
| Do Parents / Carers Feel Their Childcare Requirements are Being Met by Providers? | Yes |
| | 30% |
| | No |
| | 20% |
| Prefer not to say | |
| 50% | |

92%

of Parents/Carers Who Responded to the Survey Felt They Were Able to Pay the Charges for Childcare

13

Parents/Carers Responded to the Survey

Eastville Ward

Population

| 0 - 1 Year Olds | 1 - 2 Year Olds | 2 Year Olds | 3 - 4 Year Olds | 5 - 14 Year Olds |
|-------------------------|--------------------|----------------|---|---------------------|
| 226 | 218 | 220 | 387 | 1763 |
| Eligible 2 Year Olds | | 60 | No. of 30 Hour Codes Used by Parents/Carers | 72 |



Provision

| Nursery Schools | Private, Voluntary & Independent | Maintained Schools & Academies | Stand-alone & Governor Led Children's Centres | Childminders & Childminder Agencies | Out of School Provision (BSC, ASC & Hols) |
|---|--|--|--|---|---|
| 1 | 4 | 1 | 0 | 8 | 1 |
| Providers Registered to Offer Free Childcare | 50% | Providers Offering Tax Free Childcare | 86% | Providers Offering SEND Places | 78% |

Places (*includes 30 Hours)

| Age Range | 0 - 2 Year Olds | 2 Year Olds | Free Places for 2 Year Olds | 3 - 4 Year Olds | Free Places for 3 - 4 Year Olds* | 5 - 14 Year Olds |
|--------------------------|--------------------|----------------|-----------------------------------|--------------------|--|--------------------------------|
| Places Provided | 82 | 171 | 60 | 560 | 366 | 720 |
| Places Being Used | 51 | 116 | 43 | 376 | 270 | No. of 30 Hour Codes in Use |
| Places Not Being Used | 31 | 54 | 17 | 183 | 96 | 78 |

Charges

| Average Charge (Per Hour) | Number of Providers Making Additional Charges |
|------------------------------|--|
| 0-2YrOlds £5.07 | |
| 2-3 YrOlds £5.14 | |
| 3-4YrOlds £5.17 | |
| 5-14YrOlds £4.83 | |
| | |

Parental Demand

| | |
|--|-------------------|
| Do Parents / Carers Feel Their Childcare Requirements are Being Met by Providers? | Yes |
| | 30% |
| | No |
| | 20% |
| | Prefer not to say |
| | 50% |

81%

of Parents/Carers Who Responded to the Survey Felt They
Were Able to Pay the Charges for Childcare

16

Parents/Carers Responded to the Survey

Filwood Ward

Population

| 0 - 1 Year Olds | 1 - 2 Year Olds | 2 Year Olds | 3 - 4 Year Olds | 5 - 14 Year Olds |
|-------------------------|--------------------|----------------|---|---------------------|
| 214 | 206 | 211 | 476 | 2302 |
| Eligible 2 Year Olds | | 118 | No. of 30 Hour Codes Used by Parents/Carers | 62 |



Provision

| Nursery Schools | Private, Voluntary & Independent | Maintained Schools & Academies | Stand-alone & Governor Led Children's Centres | Childminders & Childminder Agencies | Out of School Provision (BSC, ASC & Hols) |
|---|--|--|--|---|---|
| 1 | 0 | 4 | 0 | 7 | 5 |
| Providers Registered to Offer Free Childcare | 47% | Providers Offering Tax Free Childcare | 80% | Providers Offering SEND Places | 100% |

Places (*includes 30 Hours)

| Age Range | 0 - 2 Year Olds | 2 Year Olds | Free Places for 2 Year Olds | 3 - 4 Year Olds | Free Places for 3 - 4 Year Olds* | 5 - 14 Year Olds |
|--------------------------|--------------------|----------------|-----------------------------------|--------------------|--|--------------------------------|
| Places Provided | 30 | 92 | 61 | 139 | 149 | 4 |
| Places Being Used | 30 | 91 | 47 | 139 | 256 | No. of 30 Hour Codes in Use |
| Places Not Being Used | 0 | 1 | 14 | 0 | -107 | 52 |

Charges

| Average Charge (Per Hour) | Number of Providers Making Additional Charges |
|------------------------------|--|
| 0-2YrOlds £5.68 | |
| 2-3 YrOlds £5.54 | |
| 3-4YrOlds £5.50 | |
| 5-14YrOlds £5.33 | |
| | |

Parental Demand

| | |
|--|-------------------|
| Do Parents / Carers Feel Their Childcare Requirements are Being Met by Providers? | Yes |
| | 0% |
| | No |
| | 0% |
| | Prefer not to say |
| | 100% |

33%

of Parents/Carers Who Responded to the Survey Felt They
Were Able to Pay the Charges for Childcare

3

Parents/Carers Responded to the Survey

Frome Vale Ward

Population

| 0 - 1 Year Olds | 1 - 2 Year Olds | 2 Year Olds | 3 - 4 Year Olds | 5 - 14 Year Olds |
|-------------------------|--------------------|----------------|---|---------------------|
| 167 | 176 | 185 | 339 | 1265 |
| Eligible 2 Year Olds | | 48 | No. of 30 Hour Codes Used by Parents/Carers | 59 |



Provision

| Nursery Schools | Private, Voluntary & Independent | Maintained Schools & Academies | Stand-alone & Governor Led Children's Centres | Childminders & Childminder Agencies | Out of School Provision (BSC, ASC & Hols) |
|---|--|--|--|---|---|
| 1 | 5 | 4 | 0 | 15 | 2 |
| Providers Registered to Offer Free Childcare | 71% | Providers Offering Tax Free Childcare | 83% | Providers Offering SEND Places | 100% |

Places (*includes 30 Hours)

| Age Range | 0 - 2 Year Olds | 2 Year Olds | Free Places for 2 Year Olds | 3 - 4 Year Olds | Free Places for 3 - 4 Year Olds* | 5 - 14 Year Olds |
|--------------------------|--------------------|----------------|-----------------------------------|--------------------|--|--------------------------------|
| Places Provided | 47 | 153 | 63 | 322 | 269 | 115 |
| Places Being Used | 38 | 126 | 38 | 211 | 232 | No. of 30 Hour Codes in Use |
| Places Not Being Used | 9 | 27 | 25 | 110 | 37 | 66 |

Charges

| Average Charge (Per Hour) | Number of Providers Making Additional Charges |
|------------------------------|--|
| 0-2YrOlds £5.21 | |
| 2-3 YrOlds £5.20 | |
| 3-4YrOlds £5.29 | |
| 5-14YrOlds £5.46 | |
| | |

Parental Demand

| | |
|--|-------------------|
| Do Parents / Carers Feel Their Childcare Requirements are Being Met by Providers? | Yes |
| | 44% |
| | No |
| | 6% |
| | Prefer not to say |
| | 50% |

90%

of Parents/Carers Who Responded to the Survey Felt They
Were Able to Pay the Charges for Childcare

21

Parents/Carers Responded to the Survey

Hartcliffe and Withywood Ward

Population

| 0 - 1 Year Olds | 1 - 2 Year Olds | 2 Year Olds | 3 - 4 Year Olds | 5 - 14 Year Olds |
|-------------------------|--------------------|----------------|---|---------------------|
| 362 | 342 | 353 | 705 | 3068 |
| Eligible 2 Year Olds | | 218 | No. of 30 Hour Codes Used by Parents/Carers | 74 |



Provision

| Nursery Schools | Private, Voluntary & Independent | Maintained Schools & Academies | Stand-alone & Governor Led Children's Centres | Childminders & Childminder Agencies | Out of School Provision (BSC, ASC & Hols) |
|---|--|--|--|---|---|
| 1 | 1 | 5 | 1 | 10 | 3 |
| Providers Registered to Offer Free Childcare | 64% | Providers Offering Tax Free Childcare | 56% | Providers Offering SEND Places | 89% |

Places (*includes 30 Hours)

| Age Range | 0 - 2 Year Olds | 2 Year Olds | Free Places for 2 Year Olds | 3 - 4 Year Olds | Free Places for 3 - 4 Year Olds* | 5 - 14 Year Olds |
|--------------------------|--------------------|----------------|-----------------------------------|--------------------|--|--------------------------------|
| Places Provided | 22 | 267 | 247 | 170 | 38 | 6 |
| Places Being Used | 14 | 246 | 162 | 165 | 333 | No. of 30 Hour Codes in Use |
| Places Not Being Used | 7 | 21 | 85 | 5 | -295 | 69 |

Charges

| Average Charge (Per Hour) | Number of Providers Making Additional Charges |
|------------------------------|--|
| 0-2YrOlds £5.00 | |
| 2-3 YrOlds £5.10 | |
| 3-4YrOlds £4.97 | |
| 5-14YrOlds £4.90 | |
| | |

Parental Demand

| | |
|--|-------------------|
| Do Parents / Carers Feel Their Childcare Requirements are Being Met by Providers? | Yes |
| | 29% |
| | No |
| | 0% |
| | Prefer not to say |
| | 71% |

38%

of Parents/Carers Who Responded to the Survey Felt They
Were Able to Pay the Charges for Childcare

13

Parents/Carers Responded to the Survey

Henbury and Brentry Ward

Population

| 0 - 1 Year Olds | 1 - 2 Year Olds | 2 Year Olds | 3 - 4 Year Olds | 5 - 14 Year Olds |
|-------------------------|--------------------|----------------|---|---------------------|
| 196 | 167 | 192 | 410 | 1528 |
| Eligible 2 Year Olds | | 75 | No. of 30 Hour Codes Used by Parents/Carers | 72 |



Provision

| Nursery Schools | Private, Voluntary & Independent | Maintained Schools & Academies | Stand-alone & Governor Led Children's Centres | Childminders & Childminder Agencies | Out of School Provision (BSC, ASC & Hols) |
|---|--|--|--|---|---|
| 0 | 3 | 3 | 0 | 8 | 3 |
| Providers Registered to Offer Free Childcare | 53% | Providers Offering Tax Free Childcare | 71% | Providers Offering SEND Places | 71% |

Places (*includes 30 Hours)

| Age Range | 0 - 2 Year Olds | 2 Year Olds | Free Places for 2 Year Olds | 3 - 4 Year Olds | Free Places for 3 - 4 Year Olds* | 5 - 14 Year Olds |
|--------------------------|--------------------|----------------|-----------------------------------|--------------------|--|--------------------------------|
| Places Provided | 70 | 149 | 127 | 247 | 170 | 2 |
| Places Being Used | 52 | 102 | 44 | 212 | 206 | No. of 30 Hour Codes in Use |
| Places Not Being Used | 17 | 47 | 83 | 35 | -36 | 69 |

Charges

| Average Charge (Per Hour) | | Number of Providers Making Additional Charges | |
|------------------------------|-------|--|--|
| 0-2YrOlds | £5.60 | | |
| 2-3 YrOlds | £5.19 | | |
| 3-4YrOlds | £4.98 | | |
| 5-14YrOlds | £5.00 | | |
| | | | |

Parental Demand

| | |
|--|-------------------|
| Do Parents / Carers Feel Their Childcare Requirements are Being Met by Providers? | Yes |
| | 25% |
| | No |
| | 5% |
| | Prefer not to say |
| | 70% |

66%

of Parents/Carers Who Responded to the Survey Felt They
Were Able to Pay the Charges for Childcare

35

Parents/Carers Responded to the Survey

Hengrove and Whitchurch Park Ward

Population

| 0 - 1 Year Olds | 1 - 2 Year Olds | 2 Year Olds | 3 - 4 Year Olds | 5 - 14 Year Olds |
|-------------------------|--------------------|----------------|---|---------------------|
| 217 | 222 | 237 | 443 | 2031 |
| Eligible 2 Year Olds | | 70 | No. of 30 Hour Codes Used by Parents/Carers | 86 |



Provision

| Nursery Schools | Private, Voluntary & Independent | Maintained Schools & Academies | Stand-alone & Governor Led Children's Centres | Childminders & Childminder Agencies | Out of School Provision (BSC, ASC & Hols) |
|---|--|--|--|---|---|
| 0 | 3 | 6 | 0 | 19 | 4 |
| Providers Registered to Offer Free Childcare | 59% | Providers Offering Tax Free Childcare | 82% | Providers Offering SEND Places | 77% |

Places (*includes 30 Hours)

| Age Range | 0 - 2 Year Olds | 2 Year Olds | Free Places for 2 Year Olds | 3 - 4 Year Olds | Free Places for 3 - 4 Year Olds* | 5 - 14 Year Olds |
|--------------------------|--------------------|----------------|-----------------------------------|--------------------|--|--------------------------------|
| Places Provided | 58 | 92 | 25 | 146 | 68 | 20 |
| Places Being Used | 41 | 78 | 20 | 132 | 168 | No. of 30 Hour Codes in Use |
| Places Not Being Used | 18 | 14 | 5 | 14 | -100 | 48 |

Charges

| Average Charge (Per Hour) | Number of Providers Making Additional Charges |
|------------------------------|--|
| 0-2YrOlds £5.11 | |
| 2-3 YrOlds £5.15 | |
| 3-4YrOlds £5.10 | |
| 5-14YrOlds £5.08 | |
| | |

Parental Demand

| | |
|--|-------------------|
| Do Parents / Carers Feel Their Childcare Requirements are Being Met by Providers? | Yes |
| | 0% |
| | No |
| | 9% |
| | Prefer not to say |
| | 91% |

40%

of Parents/Carers Who Responded to the Survey Felt They
Were Able to Pay the Charges for Childcare

20

Parents/Carers Responded to the Survey

Hillfields Ward

Population

| 0 - 1 Year Olds | 1 - 2 Year Olds | 2 Year Olds | 3 - 4 Year Olds | 5 - 14 Year Olds |
|-------------------------|--------------------|----------------|---|---------------------|
| 183 | 198 | 191 | 388 | 1845 |
| Eligible 2 Year Olds | | 63 | No. of 30 Hour Codes Used by Parents/Carers | 47 |



Provision

| Nursery Schools | Private, Voluntary & Independent | Maintained Schools & Academies | Stand-alone & Governor Led Children's Centres | Childminders & Childminder Agencies | Out of School Provision (BSC, ASC & Hols) |
|---|--|--|--|---|---|
| 0 | 4 | 3 | 0 | 12 | 1 |
| Providers Registered to Offer Free Childcare | 76% | Providers Offering Tax Free Childcare | 64% | Providers Offering SEND Places | 64% |

Places (*includes 30 Hours)

| Age Range | 0 - 2 Year Olds | 2 Year Olds | Free Places for 2 Year Olds | 3 - 4 Year Olds | Free Places for 3 - 4 Year Olds* | 5 - 14 Year Olds |
|--------------------------|--------------------|----------------|-----------------------------------|--------------------|--|--------------------------------|
| Places Provided | 95 | 138 | 47 | 199 | 150 | 15 |
| Places Being Used | 50 | 93 | 26 | 145 | 160 | No. of 30 Hour Codes in Use |
| Places Not Being Used | 45 | 45 | 21 | 54 | -10 | 52 |

Charges

| Average Charge (Per Hour) | Number of Providers Making Additional Charges |
|------------------------------|--|
| 0-2YrOlds £5.31 | |
| 2-3 YrOlds £5.28 | |
| 3-4YrOlds £5.18 | |
| 5-14YrOlds £5.32 | |
| | |

Parental Demand

| | |
|--|-------------------|
| Do Parents / Carers Feel Their Childcare Requirements are Being Met by Providers? | Yes |
| | 17% |
| | No |
| | 8% |
| | Prefer not to say |
| | 75% |

76%

of Parents/Carers Who Responded to the Survey Felt They
Were Able to Pay the Charges for Childcare

25

Parents/Carers Responded to the Survey

Horfield Ward

Population

| 0 - 1 Year Olds | 1 - 2 Year Olds | 2 Year Olds | 3 - 4 Year Olds | 5 - 14 Year Olds |
|-------------------------|--------------------|----------------|---|---------------------|
| 161 | 195 | 176 | 332 | 1392 |
| Eligible 2 Year Olds | | 44 | No. of 30 Hour Codes Used by Parents/Carers | 67 |



Provision

| Nursery Schools | Private, Voluntary & Independent | Maintained Schools & Academies | Stand-alone & Governor Led Children's Centres | Childminders & Childminder Agencies | Out of School Provision (BSC, ASC & Hols) |
|---|--|--|--|---|---|
| 0 | 4 | 3 | 1 | 16 | 3 |
| Providers Registered to Offer Free Childcare | 57% | Providers Offering Tax Free Childcare | 63% | Providers Offering SEND Places | 73% |

Places (*includes 30 Hours)

| Age Range | 0 - 2 Year Olds | 2 Year Olds | Free Places for 2 Year Olds | 3 - 4 Year Olds | Free Places for 3 - 4 Year Olds* | 5 - 14 Year Olds |
|--------------------------|--------------------|----------------|-----------------------------------|--------------------|--|--------------------------------|
| Places Provided | 269 | 331 | 62 | 475 | 399 | 7 |
| Places Being Used | 211 | 251 | 31 | 277 | 174 | No. of 30 Hour Codes in Use |
| Places Not Being Used | 58 | 80 | 31 | 199 | 225 | 81 |

Charges

| Average Charge (Per Hour) | | Number of Providers Making Additional Charges | |
|------------------------------|-------|--|--|
| 0-2YrOlds | £5.70 | | |
| 2-3 YrOlds | £5.63 | | |
| 3-4YrOlds | £5.61 | | |
| 5-14YrOlds | £5.17 | | |
| | | | |

Parental Demand

| | |
|--|-------------------|
| Do Parents / Carers Feel Their Childcare Requirements are Being Met by Providers? | Yes |
| | 38% |
| | No |
| | 0% |
| | Prefer not to say |
| | 63% |

42%

of Parents/Carers Who Responded to the Survey Felt They
Were Able to Pay the Charges for Childcare

19

Parents/Carers Responded to the Survey

Hotwells and Harbourside Ward

Population

| 0 - 1 Year Olds | 1 - 2 Year Olds | 2 Year Olds | 3 - 4 Year Olds | 5 - 14 Year Olds |
|-------------------------|--------------------|----------------|---|---------------------|
| 35 | 39 | 24 | 54 | 224 |
| Eligible 2 Year Olds | | 5 | No. of 30 Hour Codes Used by Parents/Carers | 9 |



Provision

| Nursery Schools | Private, Voluntary & Independent | Maintained Schools & Academies | Stand-alone & Governor Led Children's Centres | Childminders & Childminder Agencies | Out of School Provision (BSC, ASC & Hols) |
|---|--|--|--|---|---|
| 0 | 0 | 2 | 0 | 3 | 1 |
| Providers Registered to Offer Free Childcare | 17% | Providers Offering Tax Free Childcare | 0% | Providers Offering SEND Places | 0% |

Places (*includes 30 Hours)

| Age Range | 0 - 2 Year Olds | 2 Year Olds | Free Places for 2 Year Olds | 3 - 4 Year Olds | Free Places for 3 - 4 Year Olds* | 5 - 14 Year Olds |
|--------------------------|--------------------|----------------|-----------------------------------|--------------------|--|--------------------------------|
| Places Provided | 1 | 1 | 1 | 1 | 1 | 1 |
| Places Being Used | 1 | 1 | 0 | 1 | 0 | No. of 30 Hour Codes in Use |
| Places Not Being Used | 0 | 0 | 1 | 0 | 1 | 0 |

Charges

| Average Charge (Per Hour) | | Number of Providers Making Additional Charges | |
|------------------------------|-------|--|--|
| 0-2YrOlds | £7.00 | | |
| 2-3 YrOlds | £7.00 | | |
| 3-4YrOlds | £7.00 | | |
| 5-14YrOlds | £7.00 | | |
| | | | |

Parental Demand

| | |
|--|-------------------|
| Do Parents / Carers Feel Their Childcare Requirements are Being Met by Providers? | Yes |
| | 50% |
| | No |
| | 0% |
| | Prefer not to say |
| | 50% |

100%

of Parents/Carers Who Responded to the Survey Felt They
Were Able to Pay the Charges for Childcare

2

Parents/Carers Responded to the Survey

Knowle Ward

Population

| 0 - 1 Year Olds | 1 - 2 Year Olds | 2 Year Olds | 3 - 4 Year Olds | 5 - 14 Year Olds |
|-------------------------|--------------------|----------------|---|---------------------|
| 182 | 173 | 212 | 386 | 1791 |
| Eligible 2 Year Olds | | 28 | No. of 30 Hour Codes Used by Parents/Carers | 111 |



Provision

| Nursery Schools | Private, Voluntary & Independent | Maintained Schools & Academies | Stand-alone & Governor Led Children's Centres | Childminders & Childminder Agencies | Out of School Provision (BSC, ASC & Hols) |
|---|--|--|--|---|---|
| 1 | 7 | 2 | 0 | 19 | 2 |
| Providers Registered to Offer Free Childcare | 45% | Providers Offering Tax Free Childcare | 86% | Providers Offering SEND Places | 88% |

Places (*includes 30 Hours)

| Age Range | 0 - 2 Year Olds | 2 Year Olds | Free Places for 2 Year Olds | 3 - 4 Year Olds | Free Places for 3 - 4 Year Olds* | 5 - 14 Year Olds |
|--------------------------|--------------------|----------------|-----------------------------------|--------------------|--|--------------------------------|
| Places Provided | 200 | 189 | 23 | 295 | 197 | 0 |
| Places Being Used | 148 | 148 | 37 | 222 | 330 | No. of 30 Hour Codes in Use |
| Places Not Being Used | 52 | 41 | -14 | 73 | -133 | 128 |

Charges

| Average Charge (Per Hour) | Number of Providers Making Additional Charges |
|------------------------------|--|
| 0-2YrOlds £6.44 | |
| 2-3 YrOlds £6.36 | |
| 3-4YrOlds £5.51 | |
| 5-14YrOlds £6.50 | |
| | |

Parental Demand

| | |
|--|-------------------|
| Do Parents / Carers Feel Their Childcare Requirements are Being Met by Providers? | Yes |
| | 50% |
| | No |
| | 0% |
| | Prefer not to say |
| | 50% |

57%

of Parents/Carers Who Responded to the Survey Felt They
Were Able to Pay the Charges for Childcare

14

Parents/Carers Responded to the Survey

Lawrence Hill Ward

Population

| 0 - 1 Year Olds | 1 - 2 Year Olds | 2 Year Olds | 3 - 4 Year Olds | 5 - 14 Year Olds |
|-------------------------|--------------------|----------------|---|---------------------|
| 371 | 377 | 368 | 712 | 3030 |
| Eligible 2 Year Olds | | 272 | No. of 30 Hour Codes Used by Parents/Carers | 56 |



Provision

| Nursery Schools | Private, Voluntary & Independent | Maintained Schools & Academies | Stand-alone & Governor Led Children's Centres | Childminders & Childminder Agencies | Out of School Provision (BSC, ASC & Hols) |
|---|--|--|--|---|---|
| 2 | 7 | 6 | 1 | 10 | 6 |
| Providers Registered to Offer Free Childcare | 56% | Providers Offering Tax Free Childcare | 80% | Providers Offering SEND Places | 77% |

Places (*includes 30 Hours)

| Age Range | 0 - 2 Year Olds | 2 Year Olds | Free Places for 2 Year Olds | 3 - 4 Year Olds | Free Places for 3 - 4 Year Olds* | 5 - 14 Year Olds |
|--------------------------|--------------------|----------------|-----------------------------------|--------------------|--|--------------------------------|
| Places Provided | 18 | 299 | 259 | 557 | 415 | 30 |
| Places Being Used | 3 | 198 | 142 | 282 | 377 | No. of 30 Hour Codes in Use |
| Places Not Being Used | 15 | 101 | 117 | 275 | 38 | 63 |

Charges

| Average Charge (Per Hour) | | Number of Providers Making Additional Charges | |
|------------------------------|-------|--|--|
| 0-2YrOlds | £5.81 | | |
| 2-3 YrOlds | £6.12 | | |
| 3-4YrOlds | £5.69 | | |
| 5-14YrOlds | £4.50 | | |
| | | | |

Parental Demand

| | |
|--|-------------------|
| Do Parents / Carers Feel Their Childcare Requirements are Being Met by Providers? | Yes |
| | 0% |
| | No |
| | 0% |
| | Prefer not to say |
| | 100% |

100%

of Parents/Carers Who Responded to the Survey Felt They
Were Able to Pay the Charges for Childcare

1

Parents/Carers Responded to the Survey

Lockleaze Ward

Population

| 0 - 1 Year Olds | 1 - 2 Year Olds | 2 Year Olds | 3 - 4 Year Olds | 5 - 14 Year Olds |
|-------------------------|--------------------|----------------|---|---------------------|
| 168 | 203 | 185 | 350 | 1877 |
| Eligible 2 Year Olds | | 66 | No. of 30 Hour Codes Used by Parents/Carers | 75 |



Provision

| Nursery Schools | Private, Voluntary & Independent | Maintained Schools & Academies | Stand-alone & Governor Led Children's Centres | Childminders & Childminder Agencies | Out of School Provision (BSC, ASC & Hols) |
|---|--|--|--|---|---|
| 1 | 1 | 2 | 0 | 13 | 4 |
| Providers Registered to Offer Free Childcare | 48% | Providers Offering Tax Free Childcare | 60% | Providers Offering SEND Places | 70% |

Places (*includes 30 Hours)

| Age Range | 0 - 2 Year Olds | 2 Year Olds | Free Places for 2 Year Olds | 3 - 4 Year Olds | Free Places for 3 - 4 Year Olds* | 5 - 14 Year Olds |
|--------------------------|--------------------|----------------|-----------------------------------|--------------------|--|--------------------------------|
| Places Provided | 13 | 71 | 51 | 313 | 300 | 192 |
| Places Being Used | 2 | 59 | 26 | 192 | 201 | No. of 30 Hour Codes in Use |
| Places Not Being Used | 11 | 12 | 25 | 121 | 99 | 53 |

Charges

| Average Charge (Per Hour) | Number of Providers Making Additional Charges |
|------------------------------|--|
| 0-2YrOlds £4.97 | |
| 2-3 YrOlds £4.82 | |
| 3-4YrOlds £4.61 | |
| 5-14YrOlds £4.55 | |
| | |

Parental Demand

| | |
|--|-------------------|
| Do Parents / Carers Feel Their Childcare Requirements are Being Met by Providers? | Yes |
| | 9% |
| | No |
| | 18% |
| | Prefer not to say |
| | 73% |

53%

of Parents/Carers Who Responded to the Survey Felt They
Were Able to Pay the Charges for Childcare

17

Parents/Carers Responded to the Survey

Redland Ward

Population

| 0 - 1 Year Olds | 1 - 2 Year Olds | 2 Year Olds | 3 - 4 Year Olds | 5 - 14 Year Olds |
|-------------------------|--------------------|----------------|---|---------------------|
| 123 | 115 | 114 | 269 | 1757 |
| Eligible 2 Year Olds | | 2 | No. of 30 Hour Codes Used by Parents/Carers | 61 |



Provision

| Nursery Schools | Private, Voluntary & Independent | Maintained Schools & Academies | Stand-alone & Governor Led Children's Centres | Childminders & Childminder Agencies | Out of School Provision (BSC, ASC & Hols) |
|---|--|--|--|---|---|
| 0 | 9 | 2 | 0 | 11 | 6 |
| Providers Registered to Offer Free Childcare | 50% | Providers Offering Tax Free Childcare | 71% | Providers Offering SEND Places | 79% |

Places (*includes 30 Hours)

| Age Range | 0 - 2 Year Olds | 2 Year Olds | Free Places for 2 Year Olds | 3 - 4 Year Olds | Free Places for 3 - 4 Year Olds* | 5 - 14 Year Olds |
|--------------------------|--------------------|----------------|-----------------------------------|--------------------|--|--------------------------------|
| Places Provided | 230 | 454 | 7 | 689 | 316 | 25 |
| Places Being Used | 115 | 237 | 7 | 391 | 261 | No. of 30 Hour Codes in Use |
| Places Not Being Used | 115 | 218 | 0 | 298 | 55 | 127 |

Charges

| Average Charge (Per Hour) | Number of Providers Making Additional Charges |
|------------------------------|--|
| 0-2YrOlds £6.32 | |
| 2-3 YrOlds £6.12 | |
| 3-4YrOlds £5.97 | |
| 5-14YrOlds £5.53 | |

Parental Demand

| | |
|--|-------------------|
| Do Parents / Carers Feel Their Childcare Requirements are Being Met by Providers? | Yes |
| | 45% |
| | No |
| | 9% |
| | Prefer not to say |
| | 45% |

80%

of Parents/Carers Who Responded to the Survey Felt They
Were Able to Pay the Charges for Childcare

20

Parents/Carers Responded to the Survey

Southmead Ward

Population

| 0 - 1 Year Olds | 1 - 2 Year Olds | 2 Year Olds | 3 - 4 Year Olds | 5 - 14 Year Olds |
|-------------------------|--------------------|----------------|---|---------------------|
| 179 | 198 | 181 | 370 | 1896 |
| Eligible 2 Year Olds | | 68 | No. of 30 Hour Codes Used by Parents/Carers | 67 |



Provision

| Nursery Schools | Private, Voluntary & Independent | Maintained Schools & Academies | Stand-alone & Governor Led Children's Centres | Childminders & Childminder Agencies | Out of School Provision (BSC, ASC & Hols) |
|---|--|--|--|---|---|
| 0 | 5 | 3 | 1 | 9 | 1 |
| Providers Registered to Offer Free Childcare | 79% | Providers Offering Tax Free Childcare | 90% | Providers Offering SEND Places | 91% |

Places (*includes 30 Hours)

| Age Range | 0 - 2 Year Olds | 2 Year Olds | Free Places for 2 Year Olds | 3 - 4 Year Olds | Free Places for 3 - 4 Year Olds* | 5 - 14 Year Olds |
|--------------------------|--------------------|----------------|-----------------------------------|--------------------|--|--------------------------------|
| Places Provided | 9 | 88 | 42 | 155 | 138 | 154 |
| Places Being Used | 9 | 54 | 29 | 122 | 232 | No. of 30 Hour Codes in Use |
| Places Not Being Used | 0 | 34 | 13 | 33 | -94 | 83 |

Charges

| Average Charge (Per Hour) | | Number of Providers Making Additional Charges | |
|------------------------------|-------|--|--|
| 0-2YrOlds | £5.41 | | |
| 2-3 YrOlds | £5.33 | | |
| 3-4YrOlds | £5.34 | | |
| 5-14YrOlds | £5.21 | | |
| | | | |

Parental Demand

| | |
|--|-------------------|
| Do Parents / Carers Feel Their Childcare Requirements are Being Met by Providers? | Yes |
| | 11% |
| | No |
| | 5% |
| | Prefer not to say |
| | 84% |

61%

of Parents/Carers Who Responded to the Survey Felt They
Were Able to Pay the Charges for Childcare

31

Parents/Carers Responded to the Survey

Southville Ward

Population

| 0 - 1 Year Olds | 1 - 2 Year Olds | 2 Year Olds | 3 - 4 Year Olds | 5 - 14 Year Olds |
|-------------------------|--------------------|----------------|---|---------------------|
| 161 | 163 | 165 | 292 | 969 |
| Eligible 2 Year Olds | | 21 | No. of 30 Hour Codes Used by Parents/Carers | 76 |



Provision

| Nursery Schools | Private, Voluntary & Independent | Maintained Schools & Academies | Stand-alone & Governor Led Children's Centres | Childminders & Childminder Agencies | Out of School Provision (BSC, ASC & Hols) |
|---|--|--|--|---|---|
| 0 | 4 | 3 | 0 | 8 | 4 |
| Providers Registered to Offer Free Childcare | 53% | Providers Offering Tax Free Childcare | 78% | Providers Offering SEND Places | 67% |

Places (*includes 30 Hours)

| Age Range | 0 - 2 Year Olds | 2 Year Olds | Free Places for 2 Year Olds | 3 - 4 Year Olds | Free Places for 3 - 4 Year Olds* | 5 - 14 Year Olds |
|--------------------------|--------------------|----------------|-----------------------------------|--------------------|--|--------------------------------|
| Places Provided | 244 | 295 | 112 | 477 | 421 | 596 |
| Places Being Used | 164 | 220 | 25 | 306 | 310 | No. of 30 Hour Codes in Use |
| Places Not Being Used | 80 | 76 | 87 | 172 | 112 | 153 |

Charges

| Average Charge (Per Hour) | Number of Providers Making Additional Charges |
|------------------------------|--|
| 0-2YrOlds £5.96 | |
| 2-3 YrOlds £5.81 | |
| 3-4YrOlds £5.68 | |
| 5-14YrOlds £4.83 | |
| | |

Parental Demand

| | |
|--|-------------------|
| Do Parents / Carers Feel Their Childcare Requirements are Being Met by Providers? | Yes |
| | 52% |
| | No |
| | 10% |
| | Prefer not to say |
| | 38% |

81%

of Parents/Carers Who Responded to the Survey Felt They
Were Able to Pay the Charges for Childcare

37

Parents/Carers Responded to the Survey

St George Central Ward

Population

| 0 - 1 Year Olds | 1 - 2 Year Olds | 2 Year Olds | 3 - 4 Year Olds | 5 - 14 Year Olds |
|-------------------------|--------------------|----------------|---|---------------------|
| 204 | 202 | 174 | 355 | 1521 |
| Eligible 2 Year Olds | | 62 | No. of 30 Hour Codes Used by Parents/Carers | 35 |



Provision

| Nursery Schools | Private, Voluntary & Independent | Maintained Schools & Academies | Stand-alone & Governor Led Children's Centres | Childminders & Childminder Agencies | Out of School Provision (BSC, ASC & Hols) |
|---|--|--|--|---|---|
| 0 | 7 | 2 | 0 | 16 | 2 |
| Providers Registered to Offer Free Childcare | 67% | Providers Offering Tax Free Childcare | 67% | Providers Offering SEND Places | 60% |

Places (*includes 30 Hours)

| Age Range | 0 - 2 Year Olds | 2 Year Olds | Free Places for 2 Year Olds | 3 - 4 Year Olds | Free Places for 3 - 4 Year Olds* | 5 - 14 Year Olds |
|--------------------------|--------------------|----------------|-----------------------------------|--------------------|--|--------------------------------|
| Places Provided | 117 | 498 | 45 | 1445 | 280 | 26 |
| Places Being Used | 101 | 96 | 23 | 242 | 213 | No. of 30 Hour Codes in Use |
| Places Not Being Used | 16 | 402 | 22 | 1203 | 67 | 107 |

Charges

| Average Charge (Per Hour) | | Number of Providers Making Additional Charges | |
|------------------------------|-------|--|--|
| 0-2YrOlds | £5.20 | | |
| 2-3 YrOlds | £5.14 | | |
| 3-4YrOlds | £5.53 | | |
| 5-14YrOlds | £5.08 | | |

Parental Demand

| | |
|--|-----|
| Do Parents / Carers Feel Their Childcare Requirements are Being Met by Providers? | Yes |
| | 30% |
| | No |
| | 30% |
| Prefer not to say | |
| 40% | |

93%

of Parents/Carers Who Responded to the Survey Felt They
Were Able to Pay the Charges for Childcare

14

Parents/Carers Responded to the Survey

St George Troopers Hill Ward

Population

| 0 - 1 Year Olds | 1 - 2 Year Olds | 2 Year Olds | 3 - 4 Year Olds | 5 - 14 Year Olds |
|-------------------------|--------------------|----------------|---|---------------------|
| 86 | 79 | 82 | 128 | 625 |
| Eligible 2 Year Olds | | 9 | No. of 30 Hour Codes Used by Parents/Carers | 25 |



Provision

| Nursery Schools | Private, Voluntary & Independent | Maintained Schools & Academies | Stand-alone & Governor Led Children's Centres | Childminders & Childminder Agencies | Out of School Provision (BSC, ASC & Hols) |
|---|--|--|--|---|---|
| 0 | 2 | 0 | 0 | 4 | 0 |
| Providers Registered to Offer Free Childcare | 83% | Providers Offering Tax Free Childcare | 75% | Providers Offering SEND Places | 67% |

Places (*includes 30 Hours)

| Age Range | 0 - 2 Year Olds | 2 Year Olds | Free Places for 2 Year Olds | 3 - 4 Year Olds | Free Places for 3 - 4 Year Olds* | 5 - 14 Year Olds |
|--------------------------|--------------------|----------------|-----------------------------------|--------------------|--|--------------------------------|
| Places Provided | 117 | 117 | 8 | 223 | 49 | 2 |
| Places Being Used | 80 | 72 | 8 | 146 | 83 | No. of 30 Hour Codes in Use |
| Places Not Being Used | 37 | 45 | 0 | 77 | -34 | 47 |

Charges

| Average Charge (Per Hour) | | Number of Providers Making Additional Charges | |
|------------------------------|-------|--|--|
| 0-2YrOlds | £5.18 | | |
| 2-3 YrOlds | £5.13 | | |
| 3-4YrOlds | £4.87 | | |
| 5-14YrOlds | £5.00 | | |
| | | | |

Parental Demand

| | |
|--|-------------------|
| Do Parents / Carers Feel Their Childcare Requirements are Being Met by Providers? | Yes |
| | 33% |
| | No |
| | 0% |
| | Prefer not to say |
| | 67% |

92%

of Parents/Carers Who Responded to the Survey Felt They
Were Able to Pay the Charges for Childcare

13

Parents/Carers Responded to the Survey

St George West Ward

Population

| 0 - 1 Year Olds | 1 - 2 Year Olds | 2 Year Olds | 3 - 4 Year Olds | 5 - 14 Year Olds |
|-------------------------|--------------------|----------------|---|---------------------|
| 111 | 106 | 109 | 201 | 617 |
| Eligible 2 Year Olds | | 13 | No. of 30 Hour Codes Used by Parents/Carers | 33 |



Provision

| Nursery Schools | Private, Voluntary & Independent | Maintained Schools & Academies | Stand-alone & Governor Led Children's Centres | Childminders & Childminder Agencies | Out of School Provision (BSC, ASC & Hols) |
|---|--|--|--|---|---|
| 0 | 1 | 2 | 0 | 9 | 0 |
| Providers Registered to Offer Free Childcare | 50% | Providers Offering Tax Free Childcare | 75% | Providers Offering SEND Places | 80% |

Places (*includes 30 Hours)

| Age Range | 0 - 2 Year Olds | 2 Year Olds | Free Places for 2 Year Olds | 3 - 4 Year Olds | Free Places for 3 - 4 Year Olds* | 5 - 14 Year Olds |
|--------------------------|--------------------|----------------|-----------------------------------|--------------------|--|--------------------------------|
| Places Provided | 4 | 41 | 21 | 89 | 64 | 1 |
| Places Being Used | 3 | 36 | 19 | 69 | 60 | No. of 30 Hour Codes in Use |
| Places Not Being Used | 1 | 5 | 2 | 20 | 4 | 16 |

Charges

| Average Charge (Per Hour) | | Number of Providers Making Additional Charges | |
|------------------------------|-------|--|--|
| 0-2YrOlds | £5.67 | | |
| 2-3 YrOlds | £5.67 | | |
| 3-4YrOlds | £5.67 | | |
| 5-14YrOlds | £5.75 | | |
| | | | |

Parental Demand

| | |
|--|-------------------|
| Do Parents / Carers Feel Their Childcare Requirements are Being Met by Providers? | Yes |
| | 29% |
| | No |
| | 0% |
| | Prefer not to say |
| | 71% |

92%

of Parents/Carers Who Responded to the Survey Felt They
Were Able to Pay the Charges for Childcare

26

Parents/Carers Responded to the Survey

Stockwood Ward

Population

| 0 - 1 Year Olds | 1 - 2 Year Olds | 2 Year Olds | 3 - 4 Year Olds | 5 - 14 Year Olds |
|-------------------------|--------------------|----------------|---|---------------------|
| 125 | 151 | 140 | 280 | 1327 |
| Eligible 2 Year Olds | | 31 | No. of 30 Hour Codes Used by Parents/Carers | 52 |



Provision

| Nursery Schools | Private, Voluntary & Independent | Maintained Schools & Academies | Stand-alone & Governor Led Children's Centres | Childminders & Childminder Agencies | Out of School Provision (BSC, ASC & Hols) |
|---|--|--|--|---|---|
| 0 | 2 | 3 | 0 | 13 | 4 |
| Providers Registered to Offer Free Childcare | 82% | Providers Offering Tax Free Childcare | 70% | Providers Offering SEND Places | 67% |

Places (*includes 30 Hours)

| Age Range | 0 - 2 Year Olds | 2 Year Olds | Free Places for 2 Year Olds | 3 - 4 Year Olds | Free Places for 3 - 4 Year Olds* | 5 - 14 Year Olds |
|--------------------------|--------------------|----------------|-----------------------------------|--------------------|--|--------------------------------|
| Places Provided | 69 | 115 | 15 | 315 | 87 | 218 |
| Places Being Used | 30 | 75 | 11 | 104 | 155 | No. of 30 Hour Codes in Use |
| Places Not Being Used | 39 | 40 | 4 | 210 | -67 | 49 |

Charges

| Average Charge (Per Hour) | | Number of Providers Making Additional Charges | |
|------------------------------|-------|--|--|
| 0-2YrOlds | £5.09 | | |
| 2-3 YrOlds | £5.09 | | |
| 3-4YrOlds | £5.08 | | |
| 5-14YrOlds | £5.07 | | |

Parental Demand

| | |
|--|-----|
| Do Parents / Carers Feel Their Childcare Requirements are Being Met by Providers? | Yes |
| | 17% |
| | No |
| | 0% |
| Prefer not to say | |
| 83% | |

65%

of Parents/Carers Who Responded to the Survey Felt They
Were Able to Pay the Charges for Childcare

17

Parents/Carers Responded to the Survey

Stoke Bishop Ward

Population

| 0 - 1 Year Olds | 1 - 2 Year Olds | 2 Year Olds | 3 - 4 Year Olds | 5 - 14 Year Olds |
|-------------------------|--------------------|----------------|---|---------------------|
| 78 | 91 | 114 | 192 | 1256 |
| Eligible 2 Year Olds | | 13 | No. of 30 Hour Codes Used by Parents/Carers | 64 |



Provision

| Nursery Schools | Private, Voluntary & Independent | Maintained Schools & Academies | Stand-alone & Governor Led Children's Centres | Childminders & Childminder Agencies | Out of School Provision (BSC, ASC & Hols) |
|---|--|--|--|---|---|
| 0 | 1 | 2 | 1 | 5 | 2 |
| Providers Registered to Offer Free Childcare | 36% | Providers Offering Tax Free Childcare | 100% | Providers Offering SEND Places | 100% |

Places (*includes 30 Hours)

| Age Range | 0 - 2 Year Olds | 2 Year Olds | Free Places for 2 Year Olds | 3 - 4 Year Olds | Free Places for 3 - 4 Year Olds* | 5 - 14 Year Olds |
|--------------------------|--------------------|----------------|-----------------------------------|--------------------|--|--------------------------------|
| Places Provided | 30 | 57 | 25 | 73 | 64 | 9 |
| Places Being Used | 30 | 51 | 2 | 49 | 45 | No. of 30 Hour Codes in Use |
| Places Not Being Used | 0 | 6 | 23 | 24 | 19 | 14 |

Charges

| Average Charge (Per Hour) | | Number of Providers Making Additional Charges | |
|------------------------------|-------|--|--|
| 0-2YrOlds | £6.00 | | |
| 2-3 YrOlds | £6.34 | | |
| 3-4YrOlds | £6.34 | | |
| 5-14YrOlds | £5.50 | | |

Parental Demand

| | |
|--|-----|
| Do Parents / Carers Feel Their Childcare Requirements are Being Met by Providers? | Yes |
| | 62% |
| | No |
| | 10% |
| Prefer not to say | |
| 29% | |

87%

of Parents/Carers Who Responded to the Survey Felt They
Were Able to Pay the Charges for Childcare

30

Parents/Carers Responded to the Survey

Westbury-on-Trym and Henleaze Ward

Population

| 0 - 1 Year Olds | 1 - 2 Year Olds | 2 Year Olds | 3 - 4 Year Olds | 5 - 14 Year Olds |
|-------------------------|--------------------|----------------|---|---------------------|
| 212 | 256 | 252 | 564 | 2623 |
| Eligible 2 Year Olds | | 13 | No. of 30 Hour Codes Used by Parents/Carers | 174 |



Provision

| Nursery Schools | Private, Voluntary & Independent | Maintained Schools & Academies | Stand-alone & Governor Led Children's Centres | Childminders & Childminder Agencies | Out of School Provision (BSC, ASC & Hols) |
|---|--|--|--|---|---|
| 0 | 13 | 6 | 0 | 19 | 8 |
| Providers Registered to Offer Free Childcare | 48% | Providers Offering Tax Free Childcare | 83% | Providers Offering SEND Places | 76% |

Places (*includes 30 Hours)

| Age Range | 0 - 2 Year Olds | 2 Year Olds | Free Places for 2 Year Olds | 3 - 4 Year Olds | Free Places for 3 - 4 Year Olds* | 5 - 14 Year Olds |
|--------------------------|--------------------|----------------|-----------------------------------|--------------------|--|--------------------------------|
| Places Provided | 147 | 219 | 23 | 545 | 321 | 220 |
| Places Being Used | 101 | 167 | 10 | 461 | 365 | No. of 30 Hour Codes in Use |
| Places Not Being Used | 46 | 52 | 13 | 85 | -44 | 142 |

Charges

| Average Charge (Per Hour) | | Number of Providers Making Additional Charges | |
|------------------------------|-------|--|--|
| 0-2YrOlds | £6.50 | | |
| 2-3 YrOlds | £6.14 | | |
| 3-4YrOlds | £5.80 | | |
| 5-14YrOlds | £5.19 | | |

Parental Demand

| | |
|--|-------------------|
| Do Parents / Carers Feel Their Childcare Requirements are Being Met by Providers? | Yes |
| | 49% |
| | No |
| | 3% |
| | Prefer not to say |
| | 48% |

94%

of Parents/Carers Who Responded to the Survey Felt They
Were Able to Pay the Charges for Childcare

66

Parents/Carers Responded to the Survey

Windmill Hill Ward

Population

| 0 - 1 Year Olds | 1 - 2 Year Olds | 2 Year Olds | 3 - 4 Year Olds | 5 - 14 Year Olds |
|-------------------------|--------------------|----------------|---|---------------------|
| 242 | 235 | 213 | 398 | 1297 |
| Eligible 2 Year Olds | | 38 | No. of 30 Hour Codes Used by Parents/Carers | 102 |



Provision

| Nursery Schools | Private, Voluntary & Independent | Maintained Schools & Academies | Stand-alone & Governor Led Children's Centres | Childminders & Childminder Agencies | Out of School Provision (BSC, ASC & Hols) |
|---|--|--|--|---|---|
| 0 | 1 | 4 | 0 | 17 | 2 |
| Providers Registered to Offer Free Childcare | 58% | Providers Offering Tax Free Childcare | 70% | Providers Offering SEND Places | 36% |

Places (*includes 30 Hours)

| Age Range | 0 - 2 Year Olds | 2 Year Olds | Free Places for 2 Year Olds | 3 - 4 Year Olds | Free Places for 3 - 4 Year Olds* | 5 - 14 Year Olds |
|--------------------------|--------------------|----------------|-----------------------------------|--------------------|--|--------------------------------|
| Places Provided | 91 | 129 | 7 | 147 | 73 | 20 |
| Places Being Used | 51 | 79 | 4 | 123 | 102 | No. of 30 Hour Codes in Use |
| Places Not Being Used | 40 | 50 | 0 | 23 | 0 | 51 |

Charges

| Average Charge (Per Hour) | Number of Providers Making Additional Charges |
|------------------------------|--|
| 0-2YrOlds £5.83 | |
| 2-3 YrOlds £5.81 | |
| 3-4YrOlds £5.78 | |
| 5-14YrOlds £5.38 | |
| | |

Parental Demand

| | |
|--|-------------------|
| Do Parents / Carers Feel Their Childcare Requirements are Being Met by Providers? | Yes |
| | 36% |
| | No |
| | 7% |
| | Prefer not to say |
| | 57% |

73%

of Parents/Carers Who Responded to the Survey Felt They
Were Able to Pay the Charges for Childcare

33

Parents/Carers Responded to the Survey

Citywide Ward

Population

| 0 - 1 Year Olds | 1 - 2 Year Olds | 2 Year Olds | 3 - 4 Year Olds | 5 - 14 Year Olds |
|-------------------------|--------------------|----------------|---|---------------------|
| 6090 | 6080 | 5965 | 11665 | 51480 |
| Eligible 2 Year Olds | | 1808 | No. of 30 Hour Codes Used by Parents/Carers | 2240 |



Provision

| Nursery Schools | Private, Voluntary & Independent | Maintained Schools & Academies | Stand-alone & Governor Led Children's Centres | Childminders & Childminder Agencies | Out of School Provision (BSC, ASC & Hols) |
|---|--|--|--|---|---|
| 12 | 134 | 103 | 9 | 397 | 93 |
| Providers Registered to Offer Free Childcare | 57% | Providers Offering Tax Free Childcare | 77% | Providers Offering SEND Places | 73% |

Places (*includes 30 Hours)

| Age Range | 0 - 2 Year Olds | 2 Year Olds | Free Places for 2 Year Olds | 3 - 4 Year Olds | Free Places for 3 - 4 Year Olds* | 5 - 14 Year Olds |
|--------------------------|--------------------|----------------|-----------------------------------|--------------------|--|--------------------------------|
| Places Provided | 4094 | 6775 | 1859 | 12129 | 6938 | 2968 |
| Places Being Used | 2758 | 4433 | 987 | 7345 | 6718 | No. of 30 Hour Codes in Use |
| Places Not Being Used | 1336 | 2342 | 869 | 4785 | 249 | 2310 |

Charges

| Average Charge (Per Hour) | Number of Providers Making Additional Charges |
|------------------------------|--|
| 0-2YrOlds £5.71 | |
| 2-3 YrOlds £5.65 | |
| 3-4YrOlds £5.56 | |
| 5-14YrOlds £5.31 | |

Parental Demand

| | |
|--|-------------------|
| Do Parents / Carers Feel Their Childcare Requirements are Being Met by Providers? | Yes |
| | 82% |
| | No |
| | 15% |
| | Prefer not to say |
| | 3% |

35%

of Parents/Carers Who Responded to the Survey Felt They
Were Able to Pay the Charges for Childcare

659

Parents/Carers Responded to the Survey

Conclusions

As a city, Bristol is sufficient for childcare places in all age ranges (as at the time of the assessment in Dec 2018). Here are some other statistical conclusions:

- 15 of our 34 wards showed insufficiency for free places for 3 and 4 years olds, however of those same 15 wards, 7 had a surplus of paid places for 3 and 4 year olds. E.g. Stockwood Ward show a need for 67 places, however there is a 210 place surplus of privately paid places.
- 1 of our 34 wards showed insufficiency for free places for 2 year olds, but again this ward (Knowle) has a surplus of paid places for 2 year olds.
- Less than 12% of our wards showed parents who felt they were not able to afford their childcare charges (i.e. had results of less than 50%).
- Less than 10% of our wards showed they had providers who would not feel able to offer a place to child with SEND (i.e. had results of less than 50%)
- Less than half of all providers are charging for additional items (which is permitted as stated in the statutory guidance), meaning that those providers who don't charge are absorbing these costs and this is impacting upon their sustainability.
- The average cost of childcare for 2, 3 and 4 year olds is higher than the hourly rate currently funded. Whilst Bristol City Council continues to pay a higher rate than our surrounding local authorities, we tirelessly communicate this stark difference to the Department for Education.

Next Steps...

- In Autumn 2019 we will begin a campaign to making more parents aware of the offer of free places for Eligible 2 year olds.
- We have already shared new publications with all sectors, highlight tax saving options to parents (e.g. Tax Free Childcare) to ensure that every family is making the most of the support available to them financially.
- We have contacted directly all providers who reported they felt unable to offer a place to children with SEND to address training needs.

Thoughts for Next time...

In the next Childcare Sufficiency Assessment (Dec 2019) we will:

- Compare the data collected to the 2018 Childcare Sufficiency Assessment to highlight changes within past 12 months.
- Include 30 hours statistics on the number of 30 hour providers.
- Reach out to local employers to try and increase the number of parental responses in the survey.
- Perhaps a focus on 30 Hours Free Childcare as a separate statistic.

Finally, a huge 'thank you' to all the providers who responded to the assessment. We hope that the number increases each year as with more information we will be in a better position to make the best decisions.

| | | |
|---------------------------------------|---|--|
| Abacus Day Nursery | Ecole Francaise de Bristol | Manor House Day Nursery |
| Abbeywood Tots King Street | ELASC @ Hotwells | May Park Primary School |
| Abbeywood Tots – Knowle | Elizabeth's After School Club | Moon River Nursery and Preschool |
| Abbeywood Tots - Stockwood | Elizabeth's Breakfast Club | Mornington House Day Nursery |
| Amberley Hall Day Nursery | Falldon Playgroup | Muddy Boots Nursery |
| Archfield House Nursery | Filton Avenue Nursery School | Munchkins After School Club |
| Ashgrove Park Day Nursery | Fledglings Day Nursery | Noah's Ark Pre-school |
| Ashton Vale Preschool | Footsteps Preschool | Once Upon A Time Day Nursery |
| Avonmouth Children's Centre | Four Acres Children's Centre | Orchard Lea Nursery Kingswood |
| Badminton Junior School | Gatehouse Nursery | Orchard School Bristol |
| Badocks Wood Children's Centre | Golden Club | Out There Forest School and Kindergarten |
| Bannerman Road Children's Centre | Gracefield Preparatory School | Out There Kindergarten |
| Becket Hall Day Nursery | Hamilton Pre-School | Parkway Parent & Child Project |
| Bishopston Beanstalks Pre-school | Happy Dayz Pre School Ltd | Peter Pan Nursery |
| Brentry and Henbury Children's Centre | Harcourt Pre-school | Play & Learn |
| Bristol Children's Playhouse | Hartcliffe Nursery School and Children's Centre | Pooh Corner Day Nursery |
| Bristol Free School | Henbury Court Primary Academy Nursery | Purple childcare bristol ltd |
| Broomhill Infant School | Henbury Hill House Acorns | Red Bus Nursery and Pre-School |
| Busy Bee Day Nursery | Hillside Preschool | Redcliffe childrens centre & Maintained Nursery School |
| Busy Bees Pre-school Group | Honey Tree Day Nursery | Rosemary Nursery School |
| Carmel Christian School | Horfield Welly Pre-School | Rowan Tree Kindergarten - Bristol |
| Cashmore Early Years Centre | Hotwells Primary School | Steiner School |
| Charlton Nursery | Jack and Jill Pre-school | Rozey Days Montessori School |
| Christ Church Clifton Pre-School | Knowle West Nursery School | S.A.N.D. Out of School Club |
| Clifton Children's House | KudaClub Ltd | Sansway House Day Nursery |
| Clifton College Nursery | Lantern preschool | Saplings Day Nursery |
| Clifton Tots - St Pauls Road | Little Foxes Forest School | Sea Mills Primary School |
| Clifton Tots - Grove Road | Little Hayes Nursery School | Sefton Park School |
| Clifton Tots - Richmond Hill | Long Cross Children's Centre | Shirehampton Primary School |
| Clyde House Day Nursery | Magic Dragon Preschool | Snapdragons Nursery Horfield |
| Colston's Lower School | Magic Roundabout Nursery | Snapdragons Nursery Redland |
| Compass Point Children's Centre | Mama Bears Day Nursery - Brislington | Snapdragons Nursery Shirehampton |
| Counterslip Pre-School | Mama Bears Day Nursery – Clifton | Southville Primary |
| Court House Day Nursery | Mama Bears Day Nursery - Fishponds | Speedwell Nursery School |
| DaisyChain - Clifton | Mama Bears Day Nursery – Hengrove | St Anne's Infants' School |
| Daisy Chain - Westbury Park | Mama Bears Day Nursery - Shirehampton | St Bonaventure's Pre-School |
| Downs Park Day Nursery | Mama Bears Day Nursery – St George | St George Pre-School |
| Earlybirds@Kingfisher School | Mama Bears Day Nursery – Totterdown | St Joseph's Pre-School |
| Easton CE Academy | Mama Bears Day Nursery Whiteladies | St Matthews Playgroup |
| Easton Community Children's Centre | | St Patrick's Catholic Primary School |

St Pauls Nursery School and
Childrens Centre

Willow Tree Kindergarten

St Werburgh's Park Nursery School

Willow Tree Little Kindergarten

St.Peter's Church of England
Primary School

Windmill Hill City Farm Children & Family
Services

St.Philips Marsh Nursery School

Woodland House Nursery

Station Rd preschool

Woodlands Academy

Stepping Stones Brislington

Zebedees

Stepping Stones Fishponds

Stepping Stones Speedwell

Stepping Stones St George

All childminders who responded have
had their names removed in order to
protect their information, however we are
extremely grateful to the 169
childminders who contributed to this
assessment.

Sticky Fish Pre-school

Stoke Bishop Montessori

Stoke Park Primary School

Summer House Kindergarten

Summerhill Academy

Sunshine Pre School – St Martins

Sunshine Pre School - Whitchurch

Sunshine Under Fives

Sydenham Road Under Fives

The Bluebell Nursery

The Breakfast Club (BFC)

The Brislington Village Pre-school
Ltd

The Bristol University Day Nursery

The Chessel Centre Nursery

The Co-Operative Childcare Bristol

The Green Door Nursery

The Limes Nursery School and
Children's Centre

The Red House Children's Centre

The Rocking Horse Day Nursery

The Southville Centre Nursery

The Southville Centre Out of School
Services

Tin Drum Nursery

Tiny Happy People

Tiny Steps Day Nursery

Torwood House School Limited

Toybox Day Nursery

Waycroft Academy

Westbury After School Club

Westbury Baptist Pre-school

Whitchurch Under Fives

White Tree Preschool