

Level 2 Strategic Flood Risk Assessment

Central Area 1:100 Fluvial (combined with 1:1 Tidal) Flood Defence Failure Scenario 2120 inclusive of Upper End Climate Change Allowances

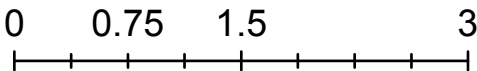
Flood Depth (m)

- 0 - 0.15
- 0.15 - 0.3
- 0.3 - 0.6
- 0.6 - 1
- 1 - 1.5
- 1.5 - 2
- 2 - Max

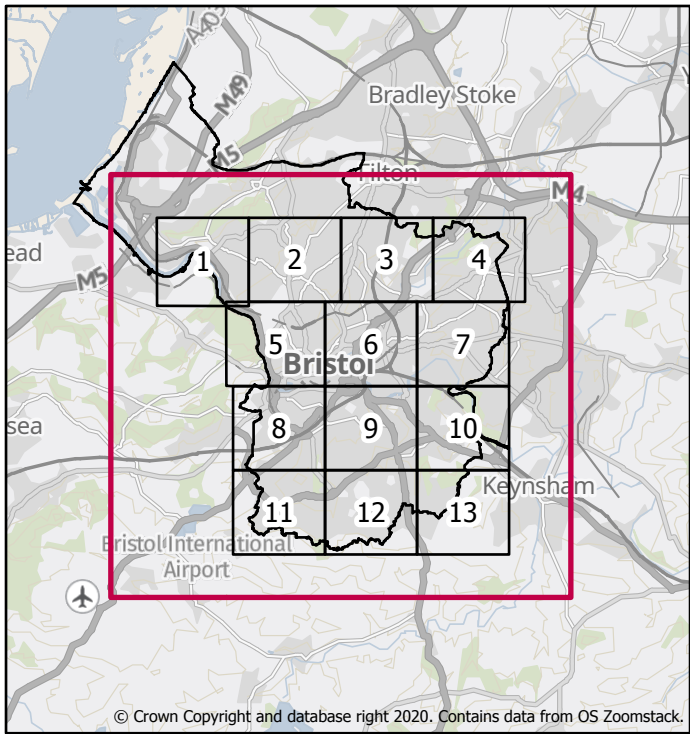
□ Bristol City Boundary

Scale @ A3: 1:50,000

Kilometers



Page 1 of 14



Created by the Flood Risk Team
22/03/2022





Level 2 Strategic Flood Risk Assessment

Central Area 1:100 Fluvial (combined with 1:1 Tidal) Flood Defence Failure Scenario 2120 inclusive of Upper End Climate Change Allowances

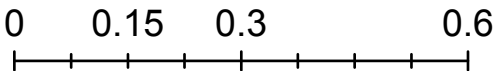
Flood Depth (m)

- 0 - 0.15
- 0.15 - 0.3
- 0.3 - 0.6
- 0.6 - 1
- 1 - 1.5
- 1.5 - 2
- 2 - Max

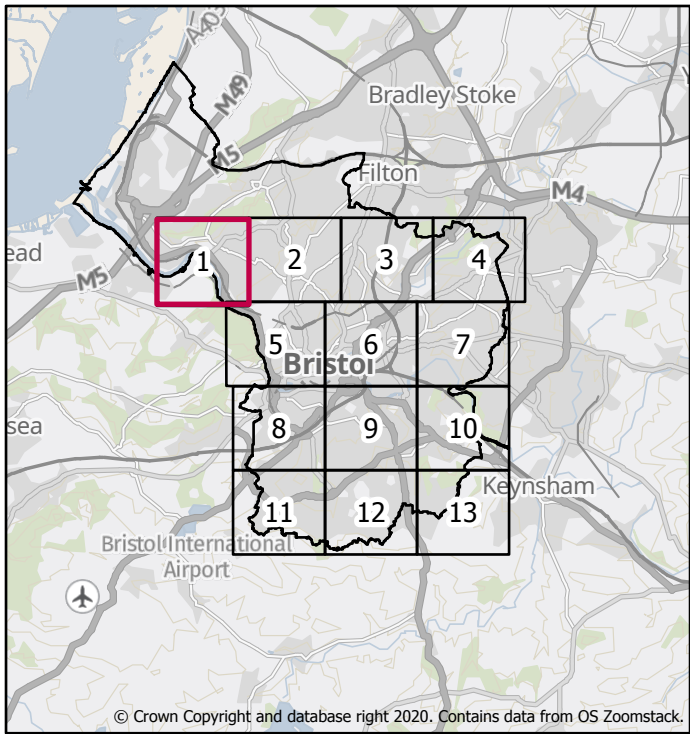
Bristol City Boundary

Scale @ A3: 1:10,000

Kilometers



Page 2 of 14



Created by the Flood Risk Team
22/03/2022





Level 2 Strategic Flood Risk Assessment

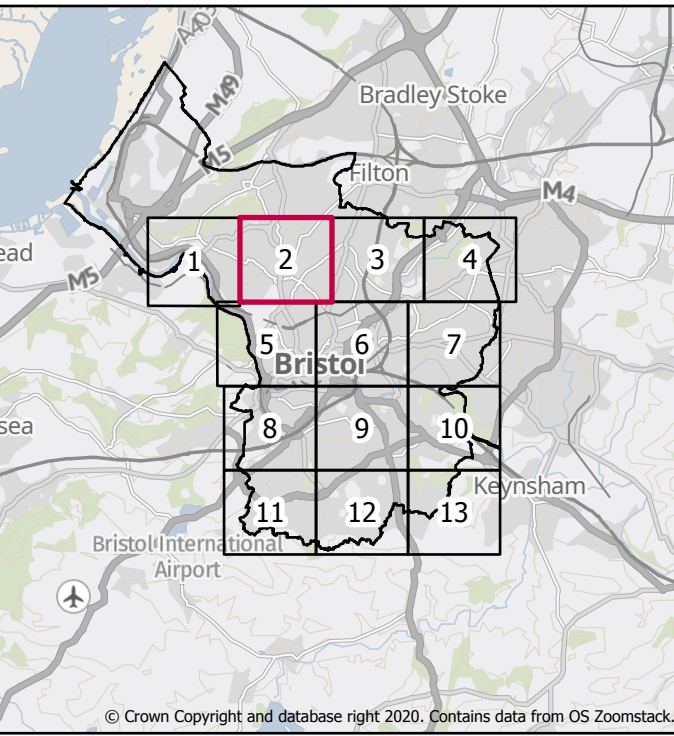
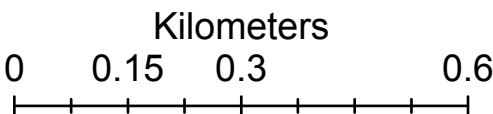
Central Area 1:100 Fluvial (combined with 1:1 Tidal) Flood Defence Failure Scenario 2120 inclusive of Upper End Climate Change Allowances

Flood Depth (m)

- 0 - 0.15
- 0.15 - 0.3
- 0.3 - 0.6
- 0.6 - 1
- 1 - 1.5
- 1.5 - 2
- 2 - Max

□ Bristol City Boundary

Scale @ A3: 1:10,000





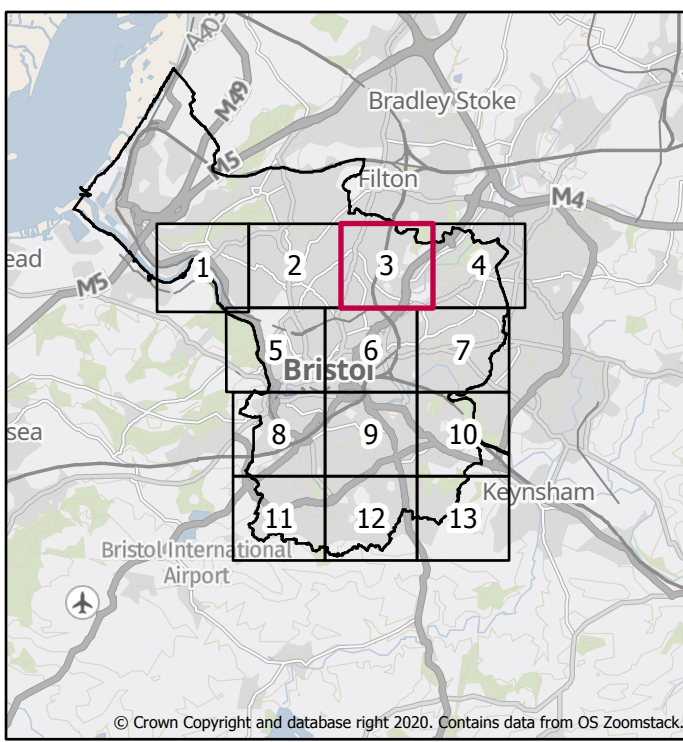
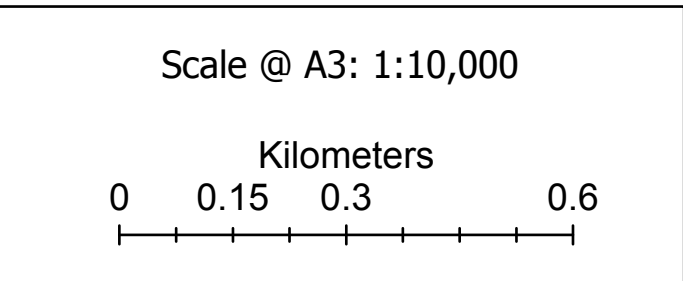
Level 2 Strategic Flood Risk Assessment

Central Area 1:100 Fluvial (combined with 1:1 Tidal) Flood Defence Failure Scenario 2120 inclusive of Upper End Climate Change Allowances

Flood Depth (m)

- 0 - 0.15
- 0.15 - 0.3
- 0.3 - 0.6
- 0.6 - 1
- 1 - 1.5
- 1.5 - 2
- 2 - Max

Bristol City Boundary





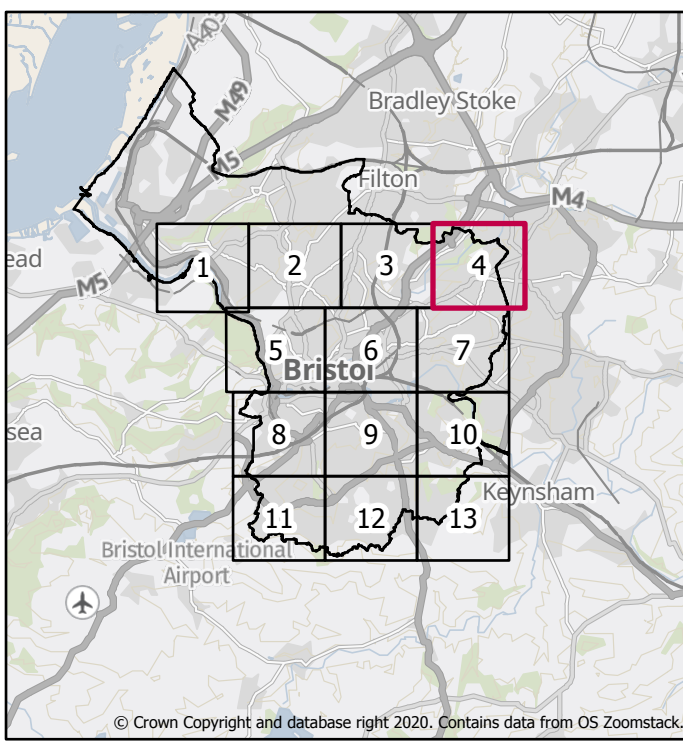
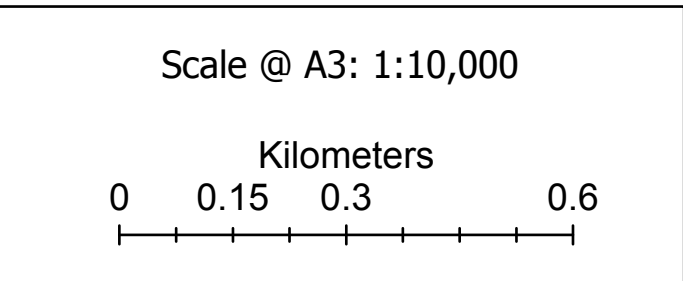
Level 2 Strategic Flood Risk Assessment

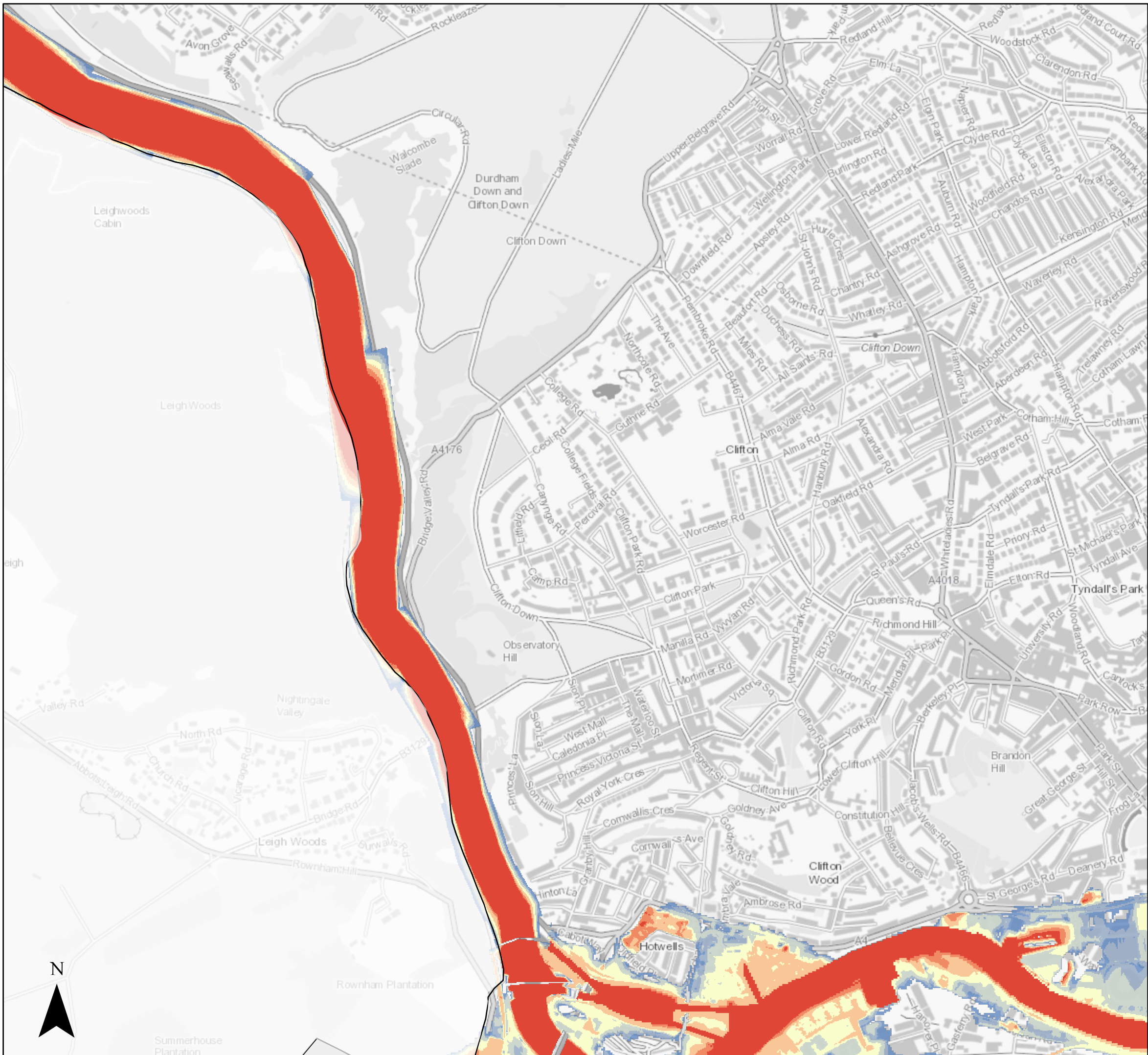
Central Area 1:100 Fluvial (combined with 1:1 Tidal) Flood Defence Failure Scenario 2120 inclusive of Upper End Climate Change Allowances

Flood Depth (m)

- 0 - 0.15
- 0.15 - 0.3
- 0.3 - 0.6
- 0.6 - 1
- 1 - 1.5
- 1.5 - 2
- 2 - Max

Bristol City Boundary





Level 2 Strategic Flood Risk Assessment

Central Area 1:100 Fluvial (combined with 1:1 Tidal) Flood Defence Failure Scenario 2120 inclusive of Upper End Climate Change Allowances

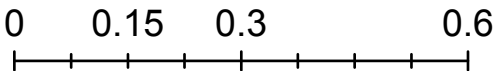
Flood Depth (m)

- 0 - 0.15
- 0.15 - 0.3
- 0.3 - 0.6
- 0.6 - 1
- 1 - 1.5
- 1.5 - 2
- 2 - Max

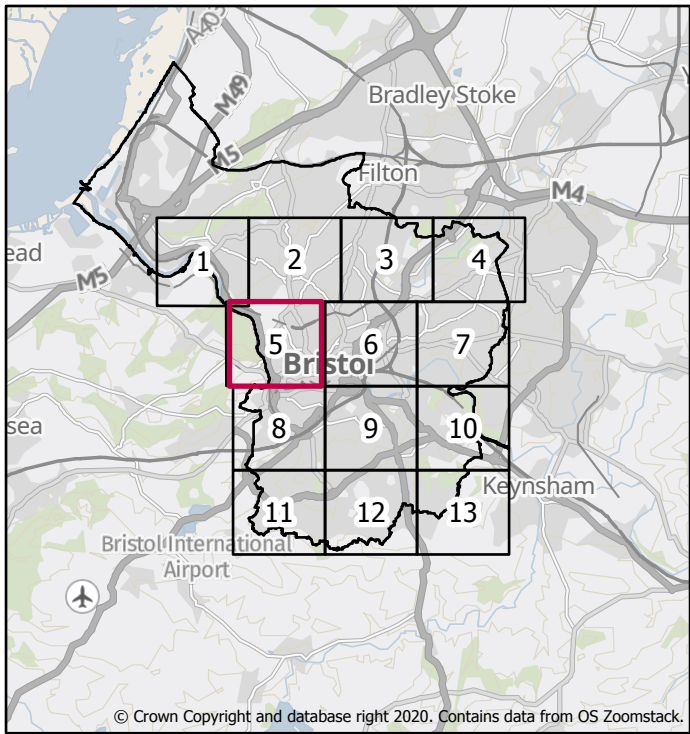
Bristol City Boundary

Scale @ A3: 1:10,000

Kilometers

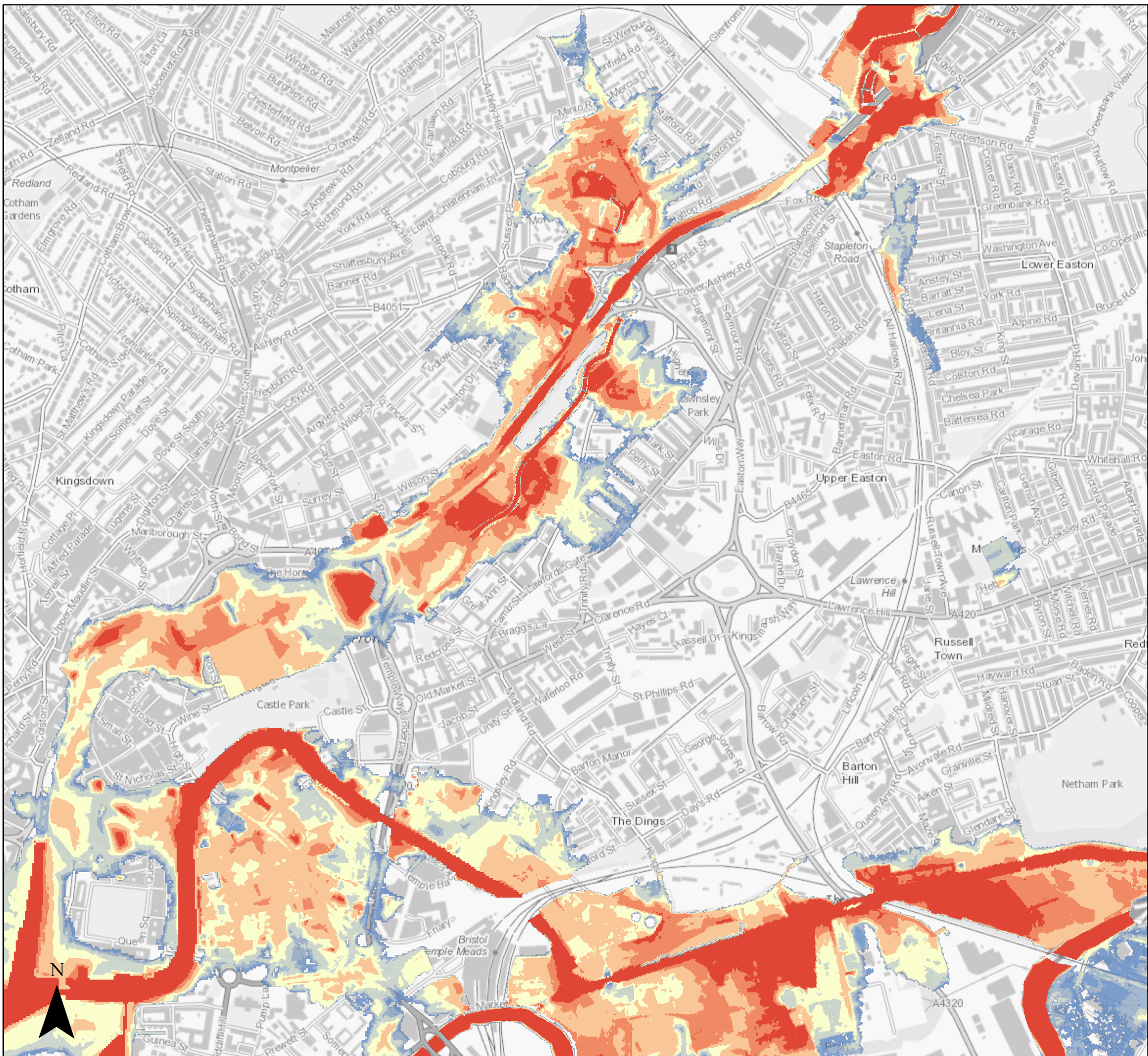


Page 6 of 14



Created by the Flood Risk Team
22/03/2022





Level 2 Strategic Flood Risk Assessment

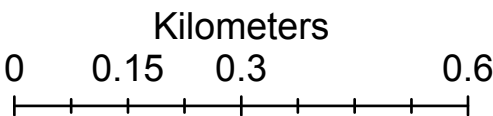
Central Area 1:100 Fluvial (combined with 1:1 Tidal) Flood Defence Failure Scenario 2120 inclusive of Upper End Climate Change Allowances

Flood Depth (m)

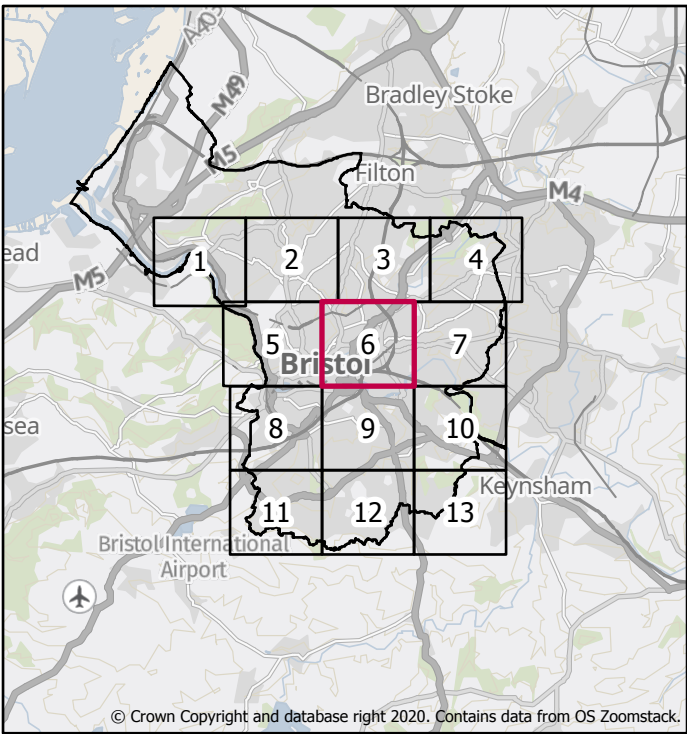
- 0 - 0.15
- 0.15 - 0.3
- 0.3 - 0.6
- 0.6 - 1
- 1 - 1.5
- 1.5 - 2
- 2 - Max

Bristol City Boundary

Scale @ A3: 1:10,000

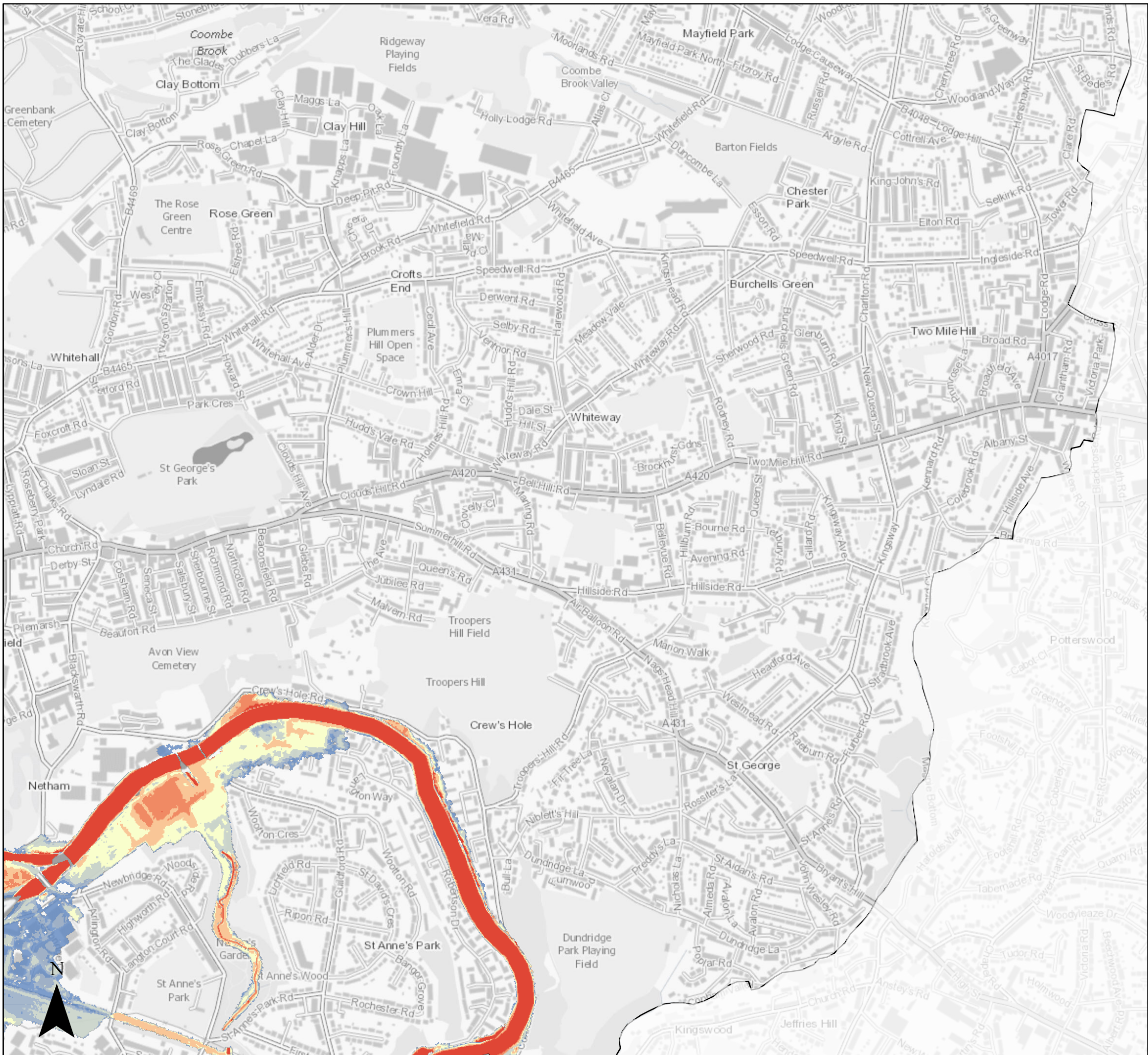


Page 7 of 14



Created by the Flood Risk Team
22/03/2022





Level 2 Strategic Flood Risk Assessment

Central Area 1:100 Fluvial (combined with 1:1 Tidal) Flood Defence Failure Scenario 2120 inclusive of Upper End Climate Change Allowances

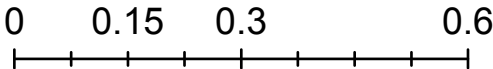
Flood Depth (m)

- 0 - 0.15
- 0.15 - 0.3
- 0.3 - 0.6
- 0.6 - 1
- 1 - 1.5
- 1.5 - 2
- 2 - Max

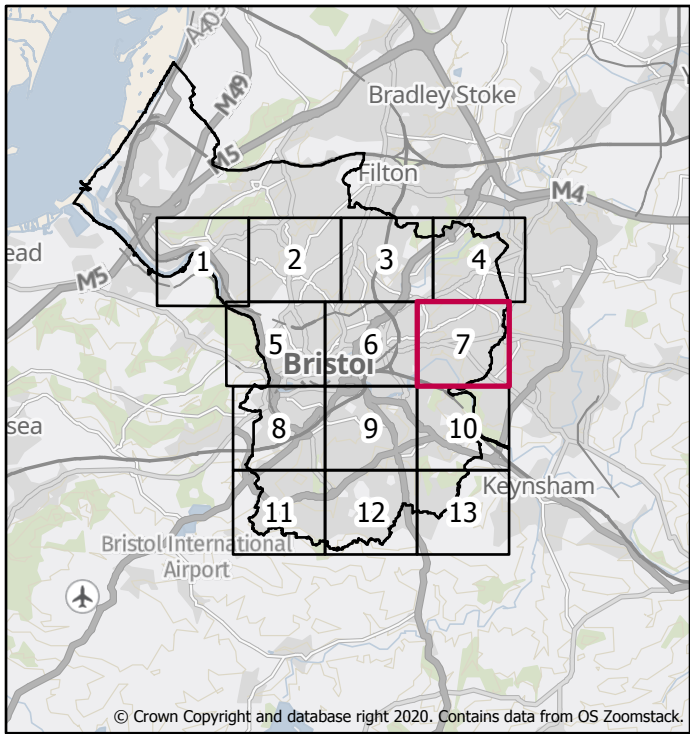
□ Bristol City Boundary

Scale @ A3: 1:10,000

Kilometers

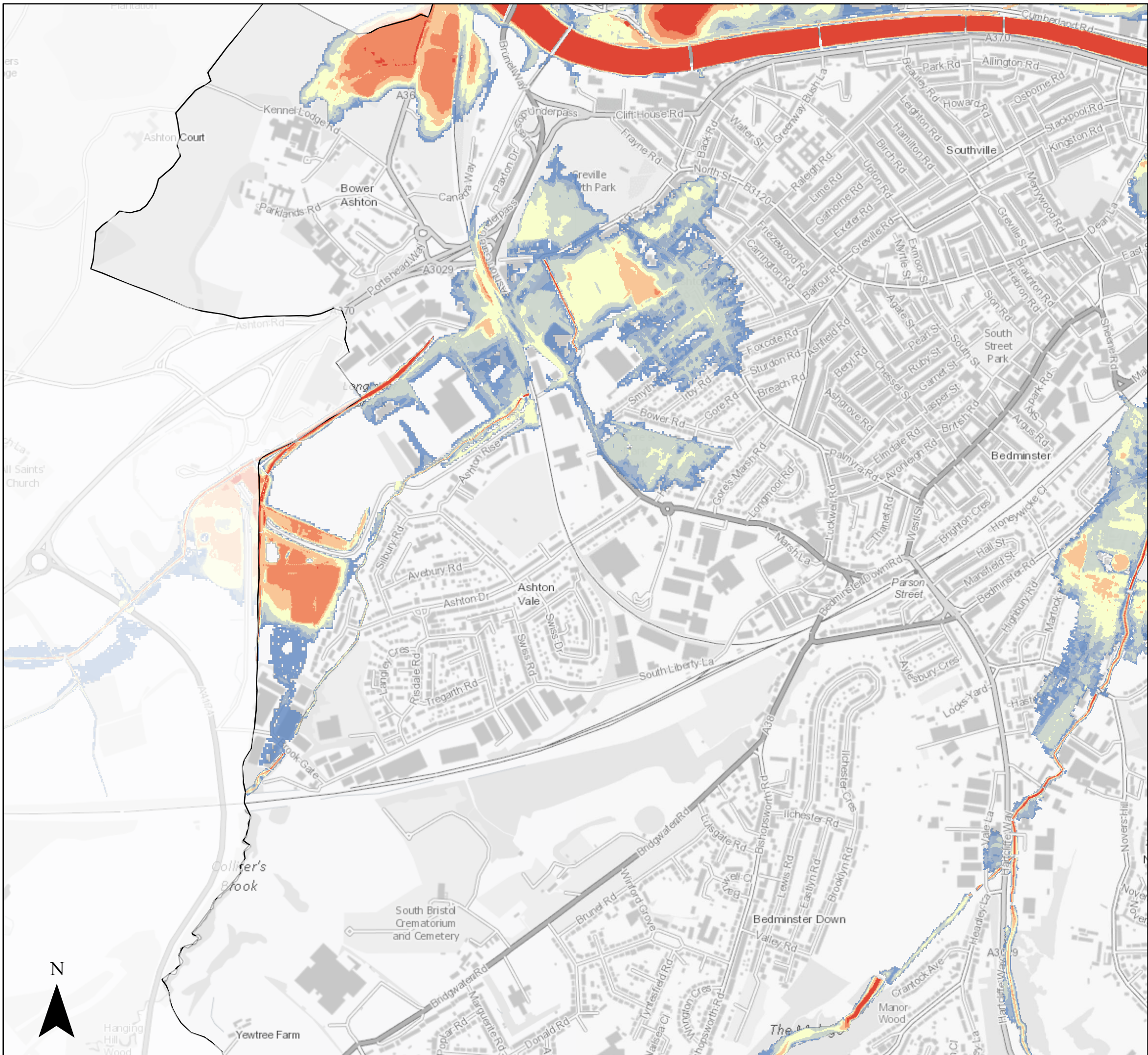


Page 8 of 14



Created by the Flood Risk Team
22/03/2022





Level 2 Strategic Flood Risk Assessment

Central Area 1:100 Fluvial (combined with 1:1 Tidal) Flood Defence Failure Scenario 2120 inclusive of Upper End Climate Change Allowances

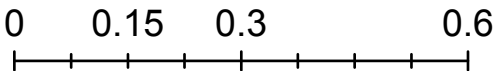
Flood Depth (m)

- 0 - 0.15
- 0.15 - 0.3
- 0.3 - 0.6
- 0.6 - 1
- 1 - 1.5
- 1.5 - 2
- 2 - Max

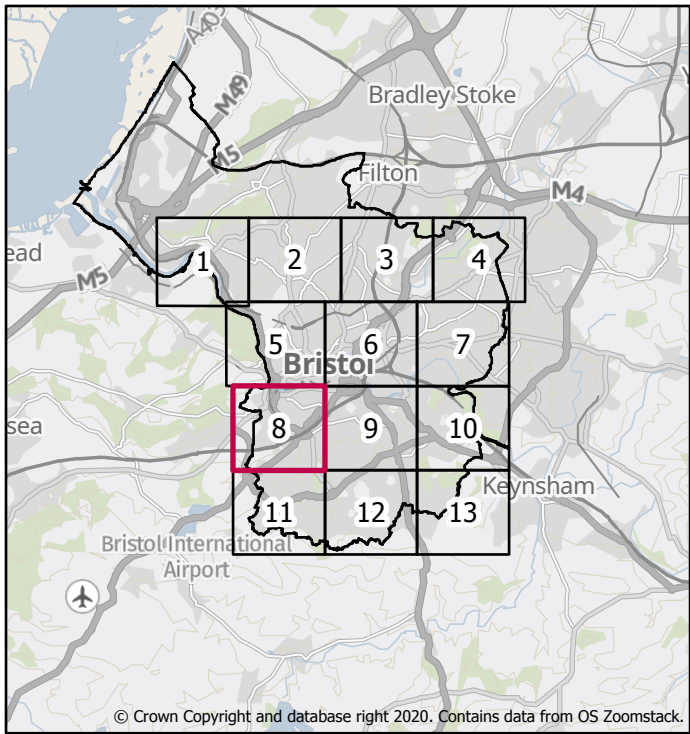
□ Bristol City Boundary

Scale @ A3: 1:10,000

Kilometers

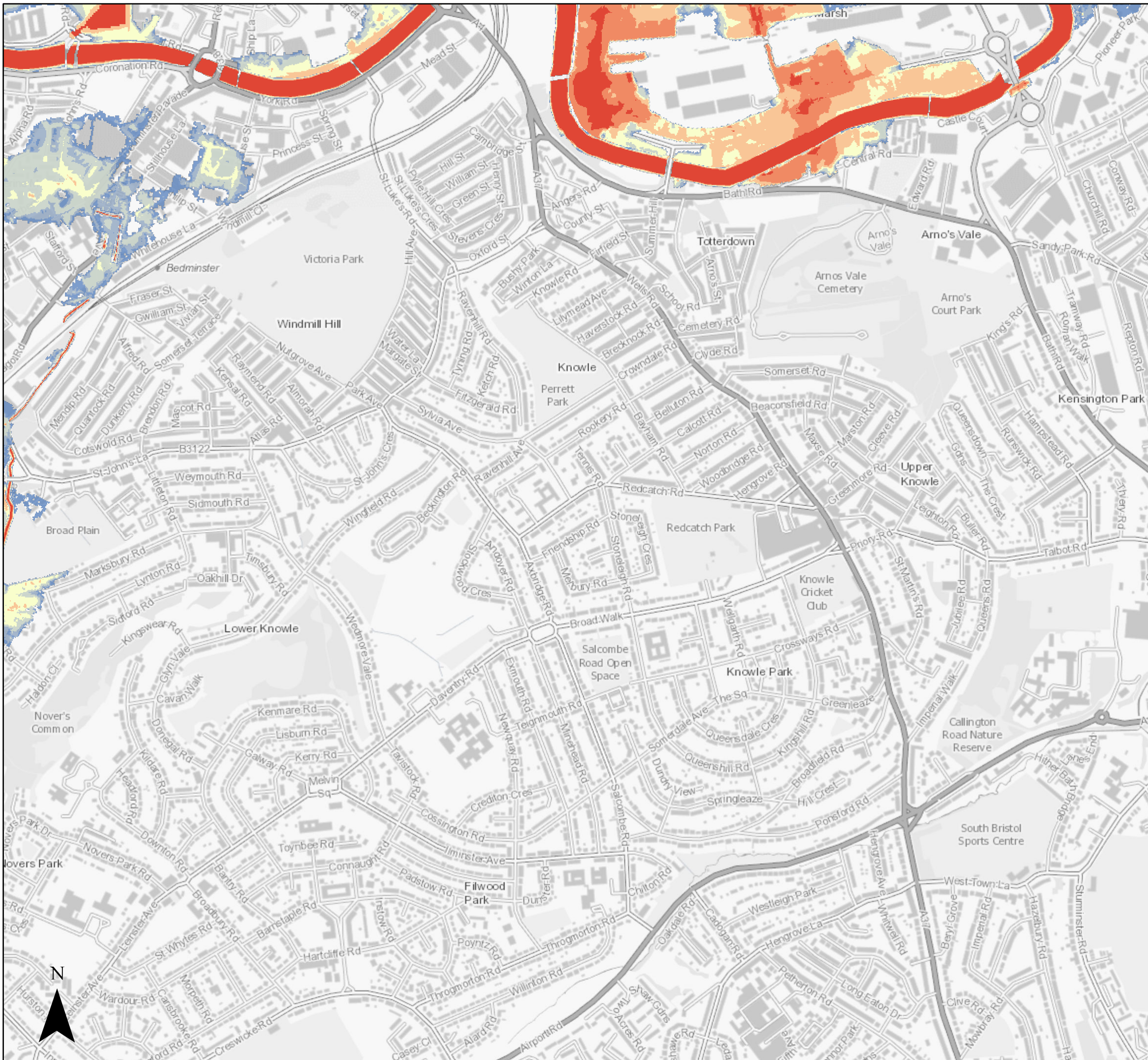


Page 9 of 14



Created by the Flood Risk Team
22/03/2022





Level 2 Strategic Flood Risk Assessment

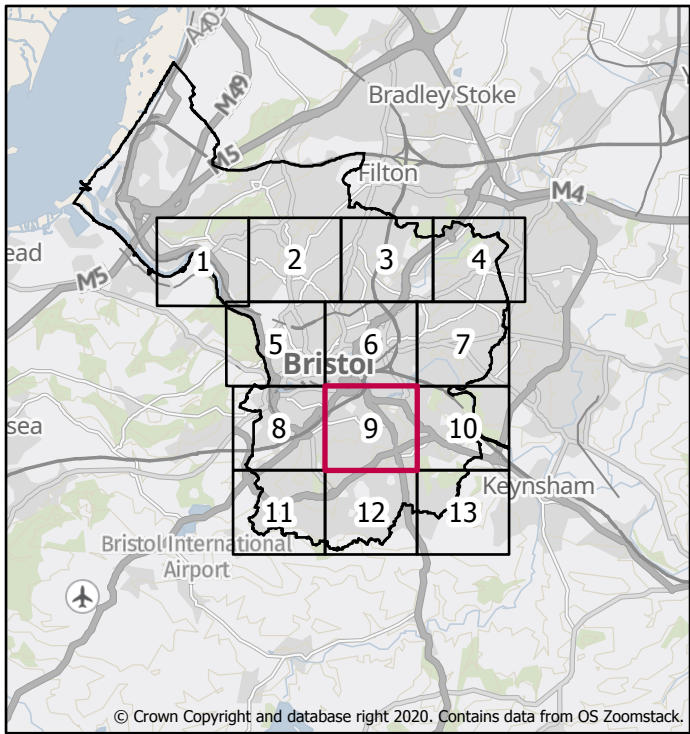
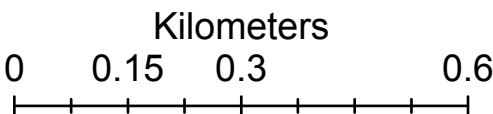
Central Area 1:100 Fluvial (combined with 1:1 Tidal) Flood Defence Failure Scenario 2120 inclusive of Upper End Climate Change Allowances

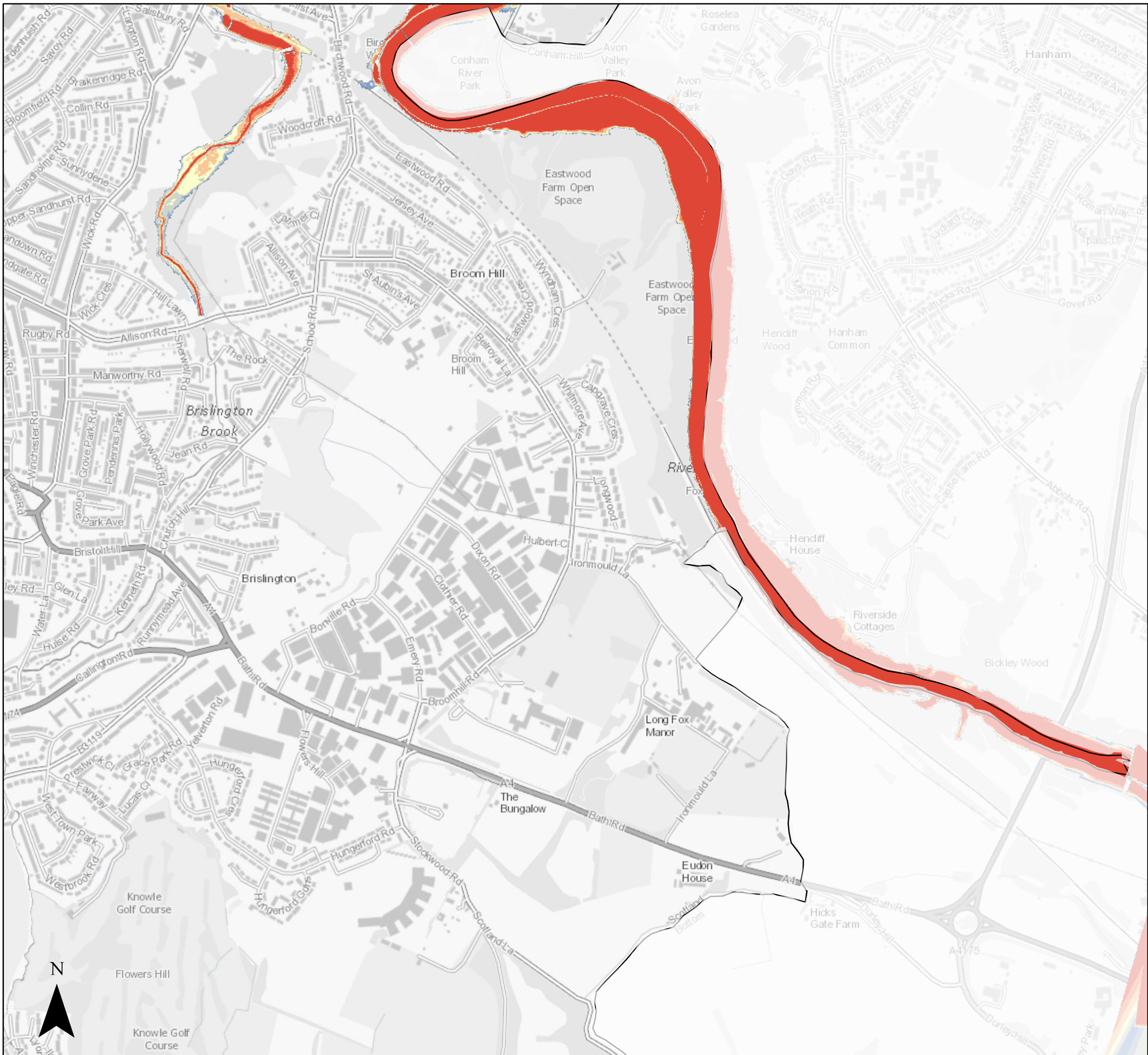
Flood Depth (m)

- 0 - 0.15
- 0.15 - 0.3
- 0.3 - 0.6
- 0.6 - 1
- 1 - 1.5
- 1.5 - 2
- 2 - Max

Bristol City Boundary

Scale @ A3: 1:10,000





Level 2 Strategic Flood Risk Assessment

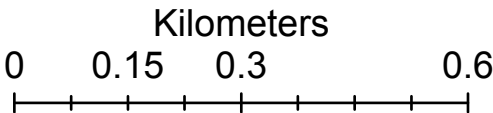
Central Area 1:100 Fluvial (combined with 1:1 Tidal) Flood Defence Failure Scenario 2120 inclusive of Upper End Climate Change Allowances

Flood Depth (m)

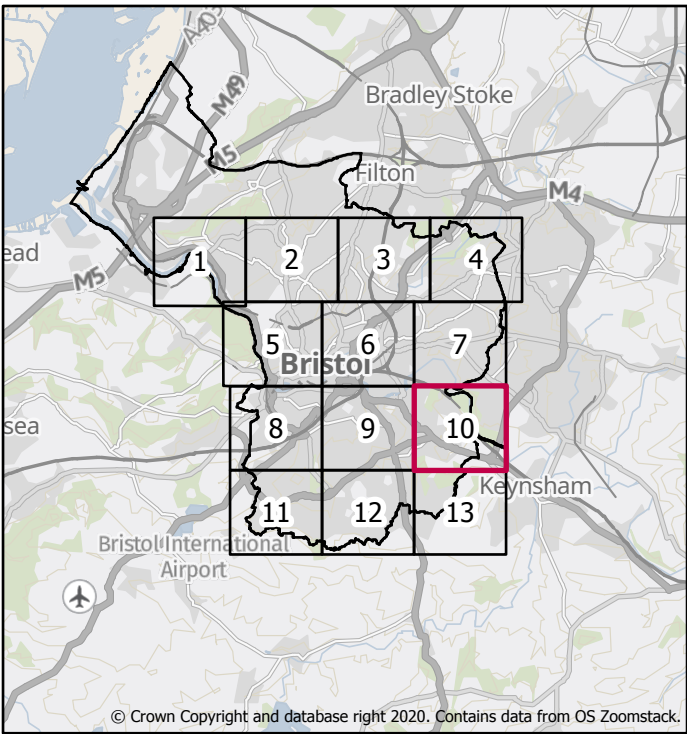
- 0 - 0.15
- 0.15 - 0.3
- 0.3 - 0.6
- 0.6 - 1
- 1 - 1.5
- 1.5 - 2
- 2 - Max

□ Bristol City Boundary

Scale @ A3: 1:10,000

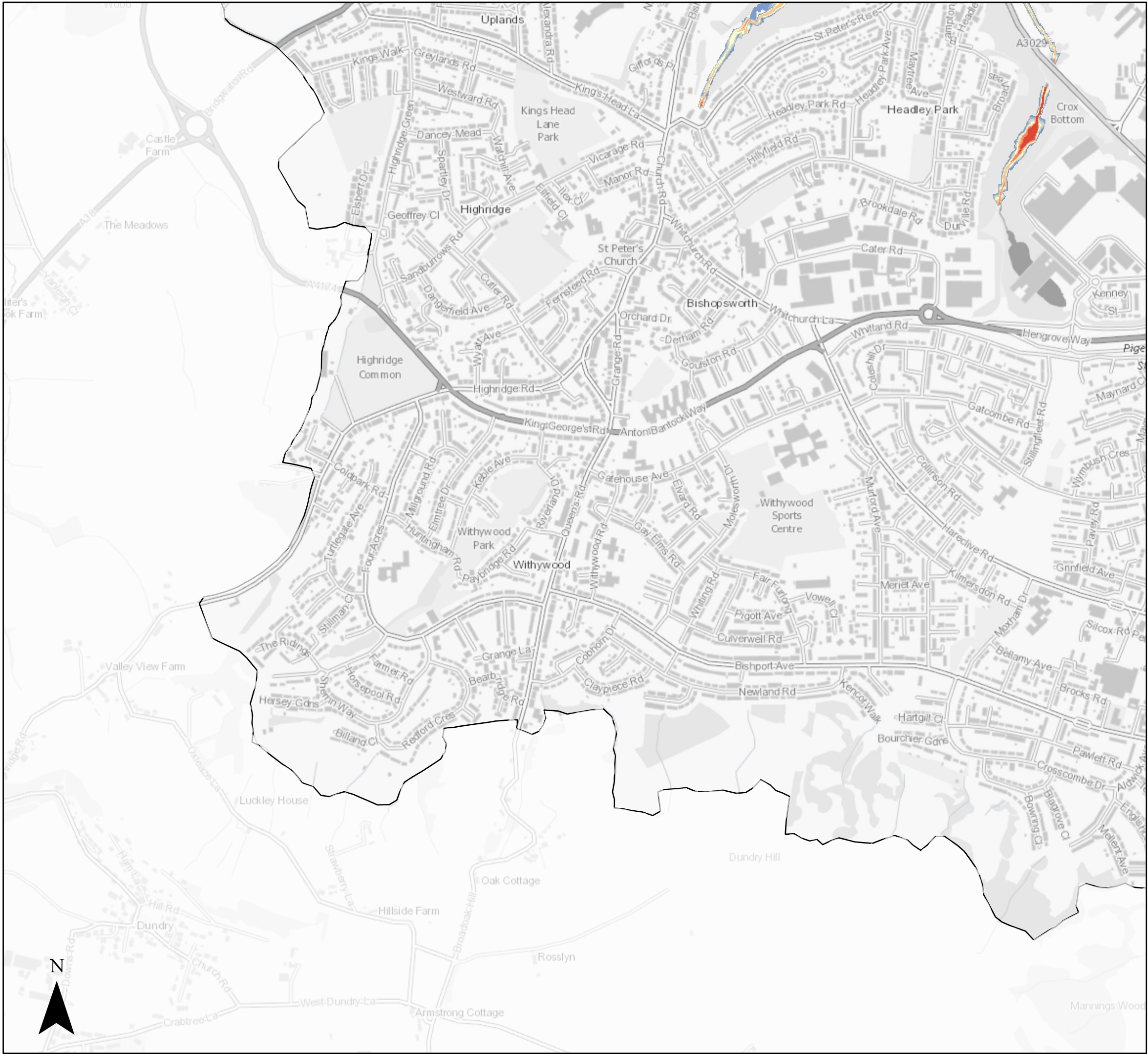


Page 11 of 14



Created by the Flood Risk Team
22/03/2022





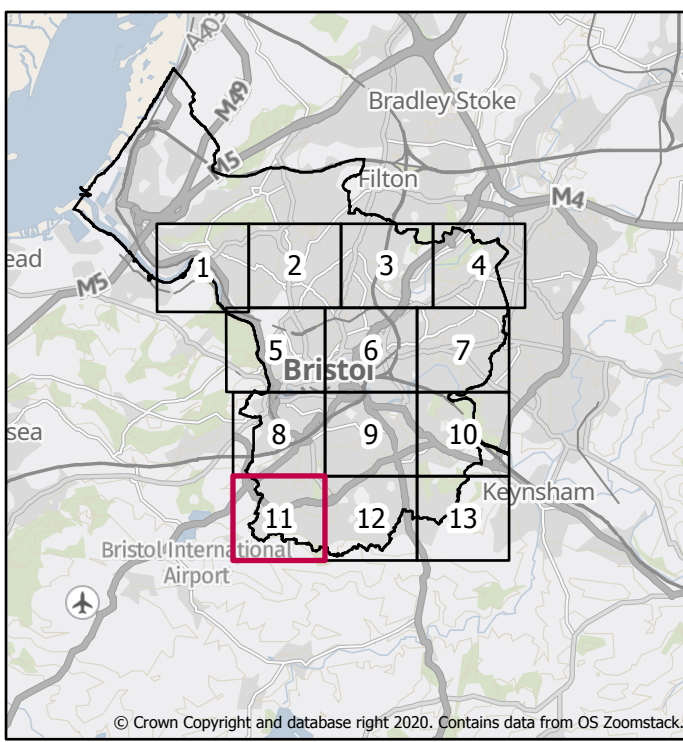
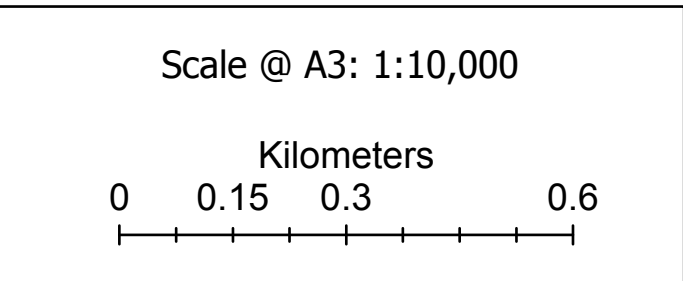
Level 2 Strategic Flood Risk Assessment

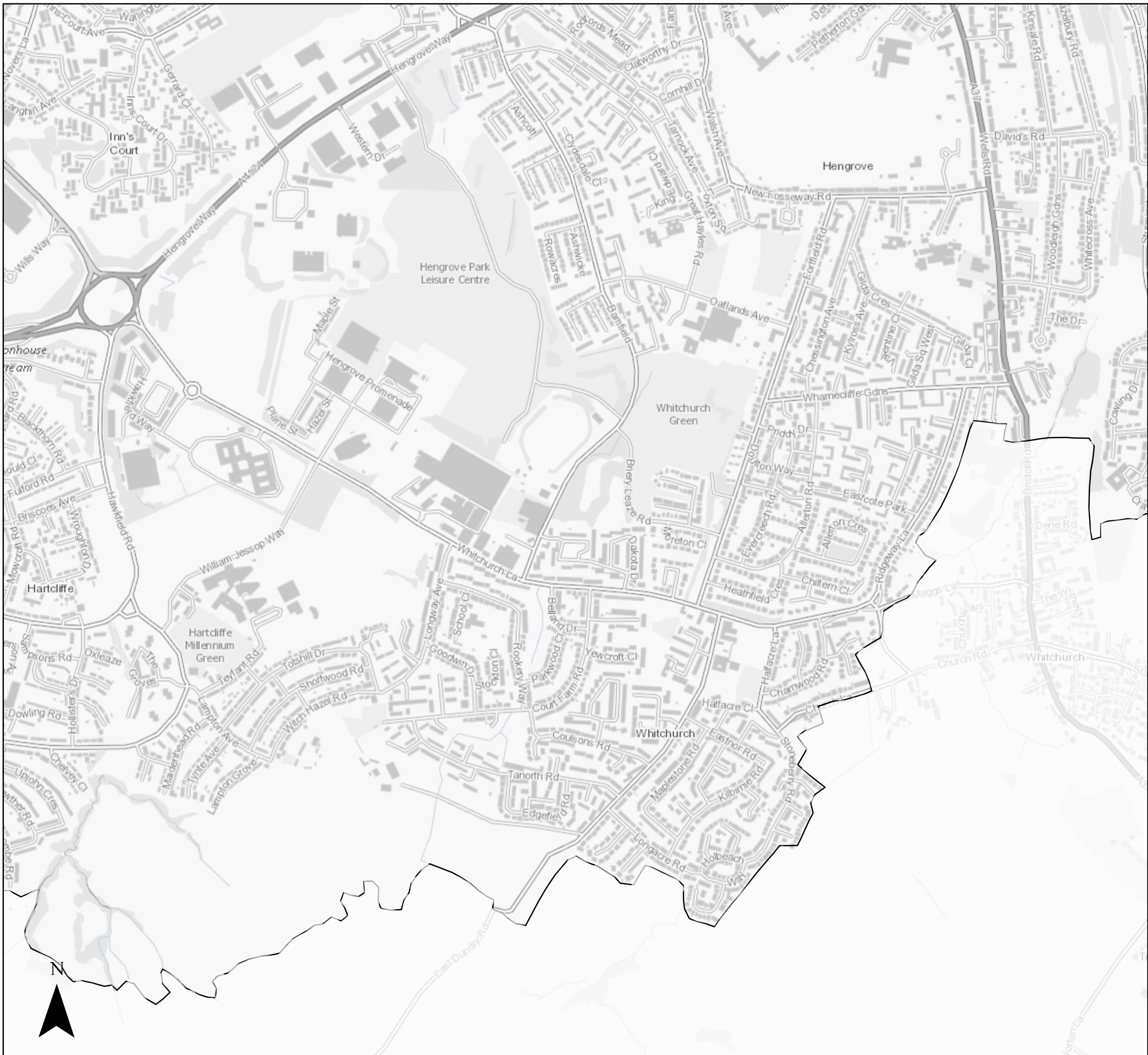
Central Area 1:100 Fluvial (combined with 1:1 Tidal) Flood Defence Failure Scenario 2120 inclusive of Upper End Climate Change Allowances

Flood Depth (m)

- 0 - 0.15
- 0.15 - 0.3
- 0.3 - 0.6
- 0.6 - 1
- 1 - 1.5
- 1.5 - 2
- 2 - Max

Bristol City Boundary





Level 2 Strategic Flood Risk Assessment

Central Area 1:100 Fluvial (combined with 1:1 Tidal) Flood Defence Failure Scenario 2120 inclusive of Upper End Climate Change Allowances

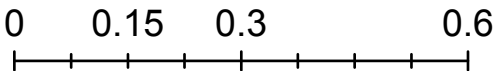
Flood Depth (m)

- 0 - 0.15
- 0.15 - 0.3
- 0.3 - 0.6
- 0.6 - 1
- 1 - 1.5
- 1.5 - 2
- 2 - Max

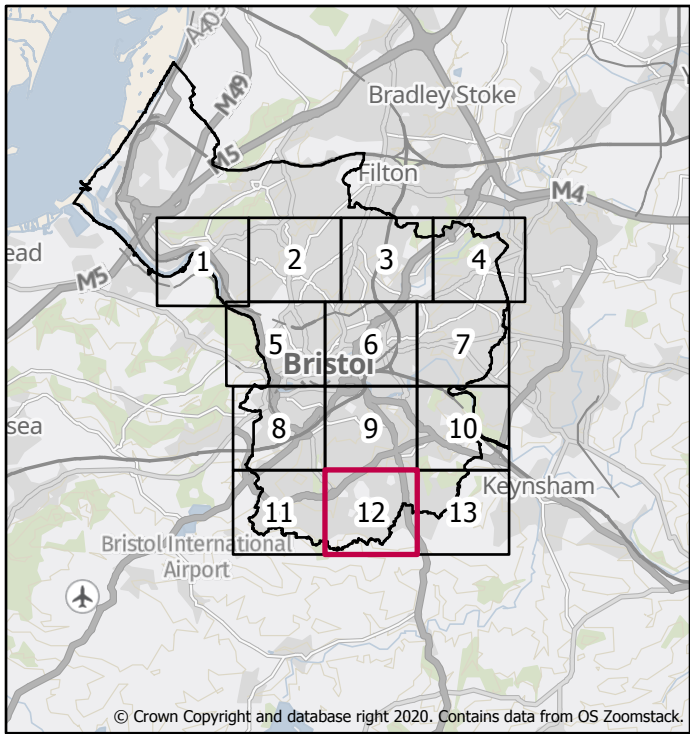
□ Bristol City Boundary

Scale @ A3: 1:10,000

Kilometers



Page 13 of 14



Created by the Flood Risk Team
22/03/2022





Level 2 Strategic Flood Risk Assessment

Central Area 1:100 Fluvial (combined with 1:1 Tidal) Flood Defence Failure Scenario 2120 inclusive of Upper End Climate Change Allowances

Flood Depth (m)

- 0 - 0.15
- 0.15 - 0.3
- 0.3 - 0.6
- 0.6 - 1
- 1 - 1.5
- 1.5 - 2
- 2 - Max

Bristol City Boundary

Scale @ A3: 1:10,000

