

## **Bristol's Big Commuter Count 2009 Results**

77 employers participated in Bristol's Big Commuter Count on Wednesday 7<sup>th</sup> October 2009 to find out how their employees travelled to work. Approximately 30,000 employees were encouraged to be counted. 11,079 employees joined the count (a response rate of approximately 36%.)

We are grateful to all companies and staff who took part in the Big Commuter Count, which we hope to do again in October next year.

Overall results are as follows:

### **Question 1. How did you get to work today, Wednesday 7th October 2009?**

<b>Mode of Travel</b>	<b>No. of responses</b>	<b>% of responses</b>
<b>TOTAL</b>	<b>11,079</b>	<b>100.0</b>
Walk	1997	18.0
Cycle	1349	12.2
Park and Ride	193	1.7
Car – Driver on your own	4132	37.3
Car – Driver with all passenger(s) being under 16 years old	268	2.4
Car – Driver with passengers	562	5.1
Car – as a passenger sharing through the "2carshare.com" car sharing scheme	37	0.3
Car – as a passenger and NOT sharing through the "2carshare.com" car sharing scheme	545	4.9
Bus	986	8.9
Bus – provided by employer	78	0.7
Motorbike	156	1.4
Moped / Scooter	54	0.5
Train	485	4.4
I am working from home today	179	1.6
Taxi / Minicab	10	0.1
Ferry	7	0.1
Other	41	0.4

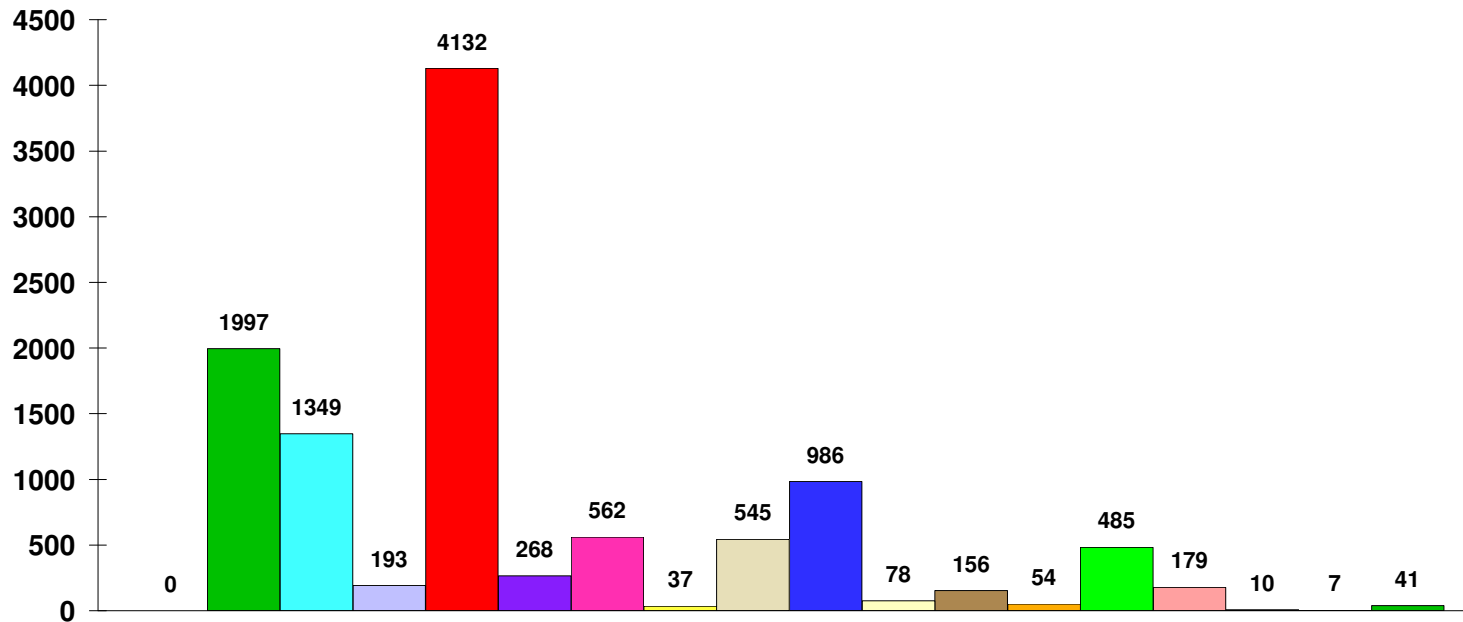
2001 Census data shows the mode split figures for people travelling to work in Bristol are as follows:

Car driver	54%
Walk	13%
Bus	14%
Work at home (includes people who work from their home)	6%
Car passenger	6%
Cycle	4%
Motorcycle	2%
Train	1%

Companies that took part in the Count (pre-registered):

<b>No.</b>	<b>Company Name</b>	<b>No.</b>	<b>Company Name</b>
1	ACAS	40	KISS 101
2	AECOM	41	Knowle West Media Centre
3	Arup	42	Life Cycle UK
4	Atkins	43	Lyons Davidson
5	Aukett Fitzroy Robinson	44	North Bristol NHS Trust
6	Avon & Somerset Police	45	Office Response Ltd
7	AWP	46	Original 106.5 FM
8	AWP - Bristol Central	47	Parsons Brinckerhoff Ltd (Bristol)
9	Base Structures Ltd	48	Peter Brett Associates
10	BBC Bristol	49	Peter Evans Partnership
11	BBC Bristol Magazines & Publications	50	Pinnacle Transportation
12	Bond Pearce LLP	51	Planning Inspectorate
13	Bristol City Council	52	Scott Wilson
14	Bristol Law Society	53	SET Squared
15	Bristol Zoo Gardens	54	Sisman Nichols
16	Britannia Building Society	55	Smith & Williamson
17	Burges Salmon	56	Soil Association
18	Byways and Highways	57	ss Great Britain
19	City of Bristol College	58	St Peter's Hospice
20	Clifton College	59	Stride Treglown Ltd
21	Computershare	60	Studio Six
22	Co-operative Legal Services	61	Sustrans
23	DAS	62	Tcgroup
24	EC Harris LLP	63	Teleperformance
25	EEF Ltd	64	The Green Register
26	Elizabeth Shaw	65	The Rainbow Centre for Children
27	Fowlers of Bristol	66	TLT LLP
28	Garrad Hassan	67	Trade-It
29	gcp Chartered Architects / gcp Consulting	68	Transport and Travel Research Ltd
30	Government Office for the South West	69	Triodos Bank
31	GWE Business West	70	Tsiolkovsky Solutions Ltd
32	Halcrow Group Ltd	71	United Hospitals Bristol NHS Foundation Trust
33	Health and Safety Executive	72	University of Bristol
34	Innogistic Software	73	Unum Ltd
35	IOP Publishing	74	Urbis Development Ltd
36	IP Limited	75	VOSA
37	JMP Consultants Ltd	76	WSP Group
38	Jordans	77	WYG Engineering
39	Key Transport Consultants Ltd		

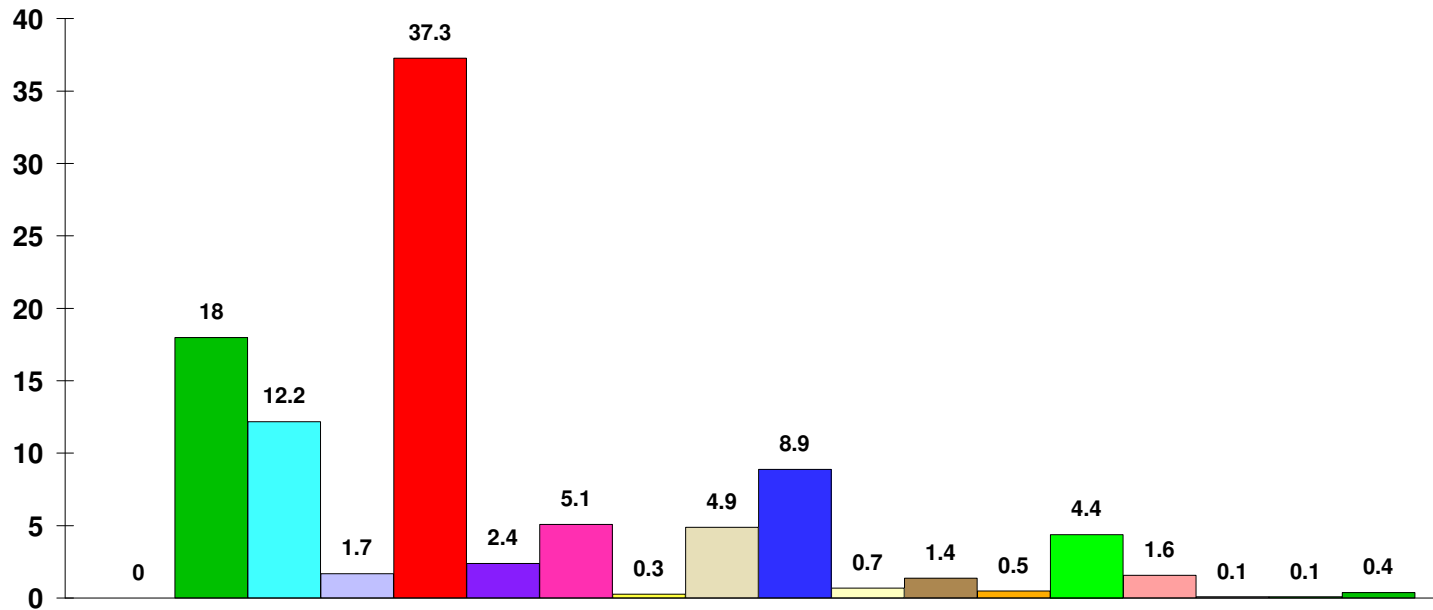
How did you get to work today? (number of responses)



**Travel Mode**

- No reply
- Walk
- Cycle
- Park and Ride
- Car - driver on your own
- Car - driver with all passenger(s) being under 16 years old
- Car - driver with passenger(s)
- Car - passenger sharing through the "2carshare.com" car sharing scheme
- Car - passenger and NOT through "2carshare.com"
- Bus
- Bus - provided by employer
- Motorbike
- Moped / Scooter
- Train
- I am working from home today
- Taxi / Minicab
- Ferry
- Other

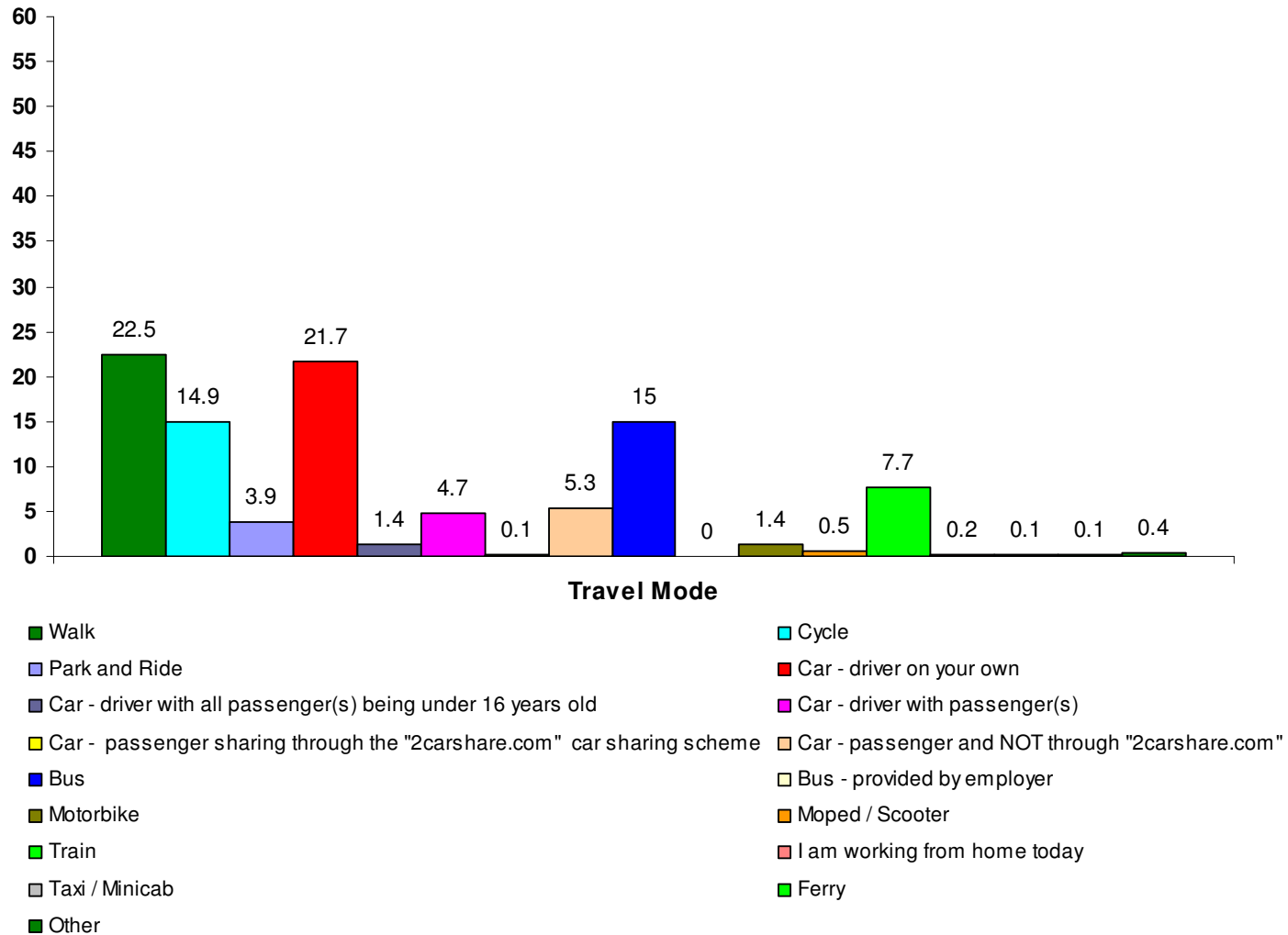
How did you get to work today? (as a percentage)



**Travel Mode**

- |  |  |
|--|--|
| <span style="color: green;">■</span> No reply  | <span style="color: blue;">■</span> Bus                          |
| <span style="color: green;">■</span> Walk  | <span style="color: yellow;">■</span> Bus - provided by employer |
| <span style="color: cyan;">■</span> Cycle  | <span style="color: brown;">■</span> Motorbike                   |
| <span style="color: lightblue;">■</span> Park and Ride   | <span style="color: orange;">■</span> Moped / Scooter            |
| <span style="color: red;">■</span> Car - driver on your own  | <span style="color: green;">■</span> Train                       |
| <span style="color: purple;">■</span> Car - driver with all passenger(s) being under 16 years old            | <span style="color: pink;">■</span> I am working from home today |
| <span style="color: magenta;">■</span> Car - driver with passenger(s)  | <span style="color: lightgrey;">■</span> Taxi / Minicab          |
| <span style="color: yellow;">■</span> Car - passenger sharing through the "2carshare.com" car sharing scheme | <span style="color: green;">■</span> Ferry                       |
| <span style="color: tan;">■</span> Car - passenger and NOT through "2carshare.com"                           | <span style="color: green;">■</span> Other                       |

Employees working in BS1 and BS2 postcode areas –  
How did you get to work today? (as a percentage)



Employees not working in BS1 and BS2 postcode areas –  
How did you get to work today? (as a percentage)

