

Bristol's Big Commuter Count 2010 Results

72 employers supported Bristol's Big Commuter Count on Wednesday 6th October 2010 to find out how employees travelled to work. Approximately 30,000 employees were encouraged to be counted. 8,682 employees joined the count.

We are grateful to all companies and employees who took part in the Big Commuter Count, which we hope to do again in October next year.

Please find the following

- A list of all organisations that took part
- Overall results

For further information about the Commuter Count, please visit www.bristol.gov.uk/commutercount

Companies that took part in the Count (pre-registered):

No.	Company Name	No.	Company Name
1	ACAS	37	Life Cycle UK
2	AECOM	38	Lyons Davidson Solicitors
3	Arup	39	Magazine Services Ltd
4	Avon & Somerset Police	40	Mercer Limited
5	AWP	41	North Bristol NHS Trust
6	Base Structures Ltd	42	Office Response Ltd
7	BBC Bristol	43	Origin Publishing
8	Bevan Brittan LLP	44	PADI International Ltd
9	Bond Pearce LLP	45	Parsons Brinckerhoff Ltd (Bristol)
10	Bristol City Council	46	Peter Brett Associates
11	Bristol Magazines Ltd	47	Peter Evans Partnership
12	Bristol Zoo Gardens	48	Planning Inspectorate
13	BT	49	SETsquared
14	Burges Salmon	50	Smith & Williamson Limited
15	City of Bristol College	51	Soil Association
16	Clifton College	52	ss Great Britain
17	Computershare	53	Strategycom Ltd
18	Co-operative Legal Services	54	Stride Treglown Ltd
19	DAS	55	Sustrans
20	Disability Benefits Centre	56	TC
21	EC Harris LLP	57	Teleperformance
22	Elizabeth Shaw	58	The Green Register
23	Fowlers of Bristol	59	The Landmark Practice
24	Garrad Hassan and Partners Ltd	60	The Vehicle Certification Agency
25	gcp Chartered Architects / gcp Consulting	61	TLT LLP
26	GWE Business West	62	Trade-It
27	Halcrow Group Ltd	63	Transport & Travel Research Ltd
28	Health and Safety Executive	64	Triodos Bank
29	Highways Agency	65	Tsiolkovsky Solutions Ltd
30	Innogistic Ltd	66	Turner & Townsend Plc
31	IOP Publishing Ltd	67	University Hospitals Bristol NHS Foundation Trust
32	JMP Consultants Ltd	68	University of Bristol
33	Jordans	69	Unum Ltd
34	Key Transport Consultants Ltd	70	URS Scott Wilson
35	Knowle West Media Centre	71	VOSA
36	Legal Services Commission	72	WSP Group

The combined overall results for all companies that took part are as follows:

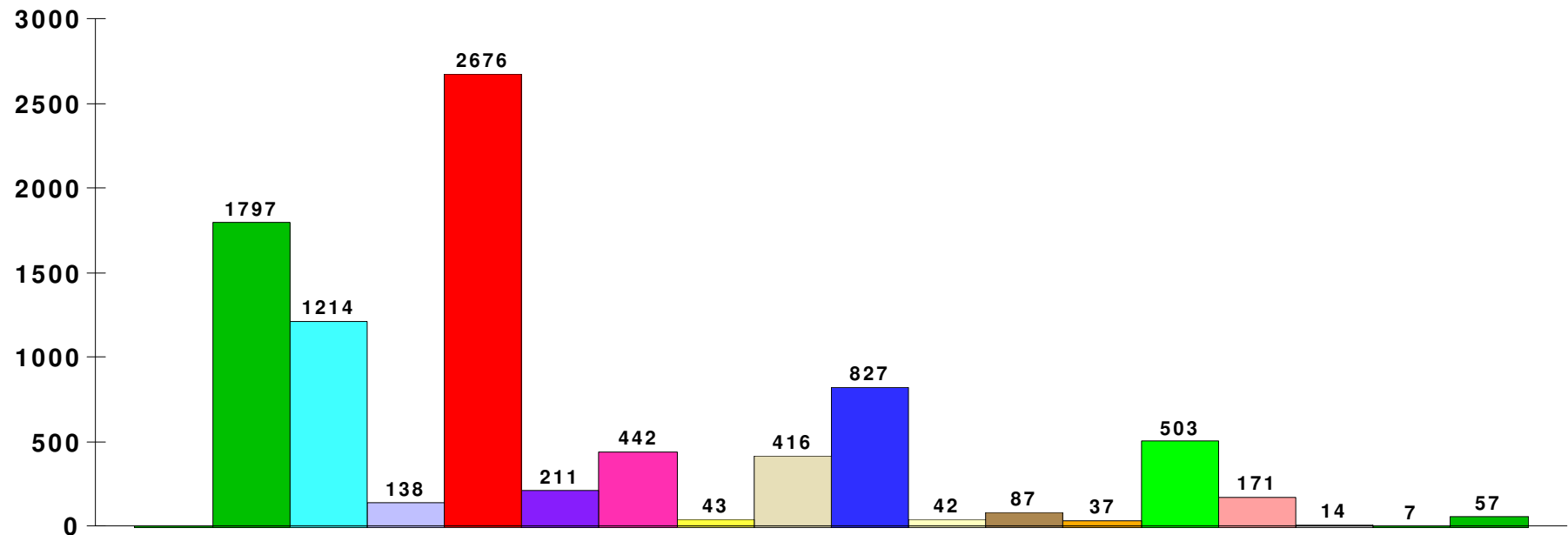
Question 1. How did you get to work today, Wednesday 6th October 2010?

Mode of Travel	No. of responses	% of responses
TOTAL	8,682	100.0
Walk	1797	20.7
Cycle	1214	14.0
Park and Ride	138	1.6
Car – Drive on your own	2676	30.8
Car – driver with all passenger(s) being under 16 years old	211	2.4
Car – Driver with passengers	442	5.1
Car – as a passenger sharing through the “2carshare.com” car sharing scheme	43	0.5
Car – as a passenger and NOT sharing through the “2carshare.com” car sharing scheme	416	4.8
Bus	827	9.5
Bus – provided by employer	42	0.5
Motorbike	87	1.0
Moped / Scooter	37	0.4
Train	503	5.8
I am working from home today	171	2.0
Taxi / Minicab	14	0.2
Ferry	7	0.1
Other	57	0.7

2001 Census data shows the mode split figures for people travelling to work in Bristol are as follows:

Car driver	54%
Walk	13%
Bus	14%
Work at home (includes people who work from their home)	6%
Car passenger	6%
Cycle	4%
Motorcycle	2%
Train	1%

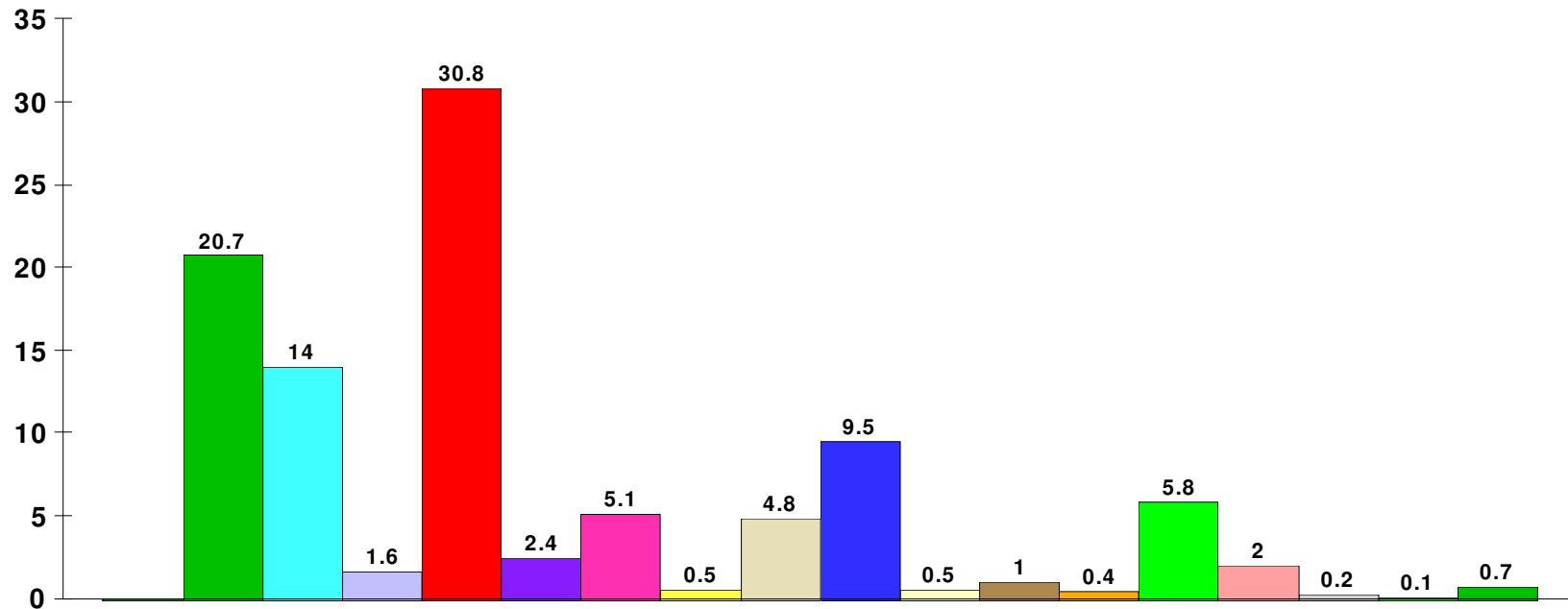
How did you get to work today? (number of responses)



Travel Mode

- | | |
|--------------------------------------------------------------------------------------------------------------|------------------------------------------------------------------|
| ■ No reply | ■ Bus |
| ■ Walk | ■ Bus - provided by employer |
| ■ Cycle | ■ Motorbike |
| ■ Park and Ride | ■ Moped / Scooter |
| ■ Car - driver on your own | ■ Train |
| ■ Car - driver with all passenger(s) being under 16 years old | ■ I am working from home today |
| ■ Car - driver with passenger(s) | ■ Taxi / Minicab |
| ■ Car - passenger sharing through the "2carshare.com" car sharing scheme | ■ Ferry |
| ■ Car - passenger and NOT through "2carshare.com" | ■ Other |

How did you get to work today? (as a percentage)



- No reply
- Walk
- Cycle
- Park and Ride
- Car - driver on your own
- Car - driver with all passenger(s) being under 16 years old
- Car - driver with passenger(s)
- Car - passenger sharing through the "2carshare.com" car sharing scheme
- Car - passenger and NOT through "2carshare.com"
- Bus
- Bus - provided by employer
- Motorbike
- Moped / Scooter
- Train
- I am working from home today
- Taxi / Minicab
- Ferry
- Other