

**⚠ Please beware.** Steep inclines and drops in this area. Please note that this walk is **not suitable for buggies.**

**POINTS OF INTEREST**

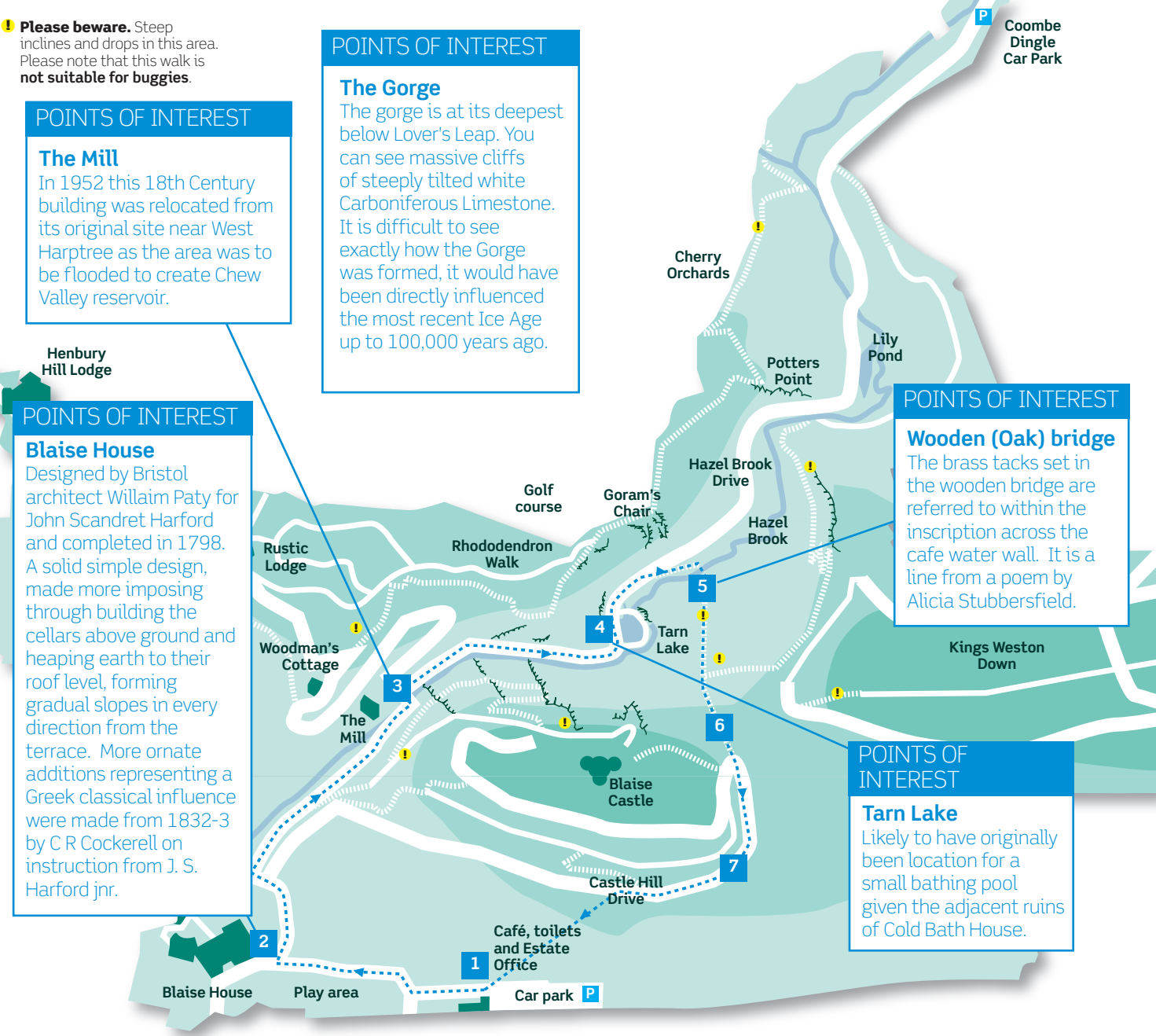
**The Mill**  
In 1952 this 18th Century building was relocated from its original site near West Harptree as the area was to be flooded to create Chew Valley reservoir.

**POINTS OF INTEREST**

**Blaise House**  
Designed by Bristol architect Willaim Paty for John Scandret Harford and completed in 1798. A solid simple design, made more imposing through building the cellars above ground and heaping earth to their roof level, forming gradual slopes in every direction from the terrace. More ornate additions representing a Greek classical influence were made from 1832-3 by C R Cockerell on instruction from J. S. Harford jnr.

**POINTS OF INTEREST**

**The Gorge**  
The gorge is at its deepest below Lover's Leap. You can see massive cliffs of steeply tilted white Carboniferous Limestone. It is difficult to see exactly how the Gorge was formed, it would have been directly influenced the most recent Ice Age up to 100,000 years ago.



**POINTS OF INTEREST**

**Wooden (Oak) bridge**  
The brass tacks set in the wooden bridge are referred to within the inscription across the cafe water wall. It is a line from a poem by Alicia Stubbersfield.

**POINTS OF INTEREST**

**Tarn Lake**  
Likely to have originally been location for a small bathing pool given the adjacent ruins of Cold Bath House.

blue walk

**Blaise Castle Estate**

**Gorge Walk**



**route/distance**

**Approx. 1½ miles/50 minutes.**  
Incorporates the gorge and up through the surrounding woodlands.

**route difficulty**

**Hard.** This walk uses surfaced and woodland paths. Included steep inclines (marked ⚠ on map).

**points of interest**

Blaise House, The Gorge, Hazel Brook, The Old Mill, Tarn Lake, Wooden Bridge.

**We hope you enjoy your walk!**  
Why not try these other walks through Blaise Castle Estate? Pick up a leaflet at the Estate Office or download at [www.bristol.gov.uk/blaisecastleestate](http://www.bristol.gov.uk/blaisecastleestate)

**pink walk**  
Approx. 3 miles/1¼ hr.  
Hard walk  
**Rhododendron Walk**

**green walk**  
Approx. 1½ miles/35 mins.  
Easy walk  
**Kings Weston**

**orange walk**  
Approx. 1¼ miles/40 mins.  
Easy walk  
**Castle Walk**

**purple walk**  
Approx. 1¼ miles/50 mins.  
Easy walk  
**Royalls Walk**

PEOPLE PARKS & NATURE working together

Bristol Parks



# Welcome to Blaise Castle Estate

Blaise Estate is a Grade II listed historic landscape with recorded human activity dating back 2,000 years. It became a 'pleasure park' to a variety of wealthy private owners and has been influenced through the landscape designer Humphrey Repton. It was purchased by the Corporation of Bristol in 1926 for £20,175.

The Heritage Lottery funded project to restore the historic landscape and public park began in 2000, with an investment of approx. £6.5 million. Modern visitor facilities such as a cafe, play area and performance space were introduced whilst the historic culture of the site was conserved.

These circular guided walks have been developed to provide reassurance and information for those who wish to experience all the estate offers. This includes spectacular views, the castle folly, lakes, scheduled ancient monuments, the 18th Century mansion, unique rock formations and designed landscape features.

Varying in length, all walks will contain relatively steep ascents/descents. Care should be taken on cliff edges and steep slopes.

Any feedback is always appreciated. Enjoy!

## contact us



Blaise Castle Estate, c/o Parks and Estates, Colston 33, Colston Avenue, Bristol BS1 4UA



[www.bristol.gov.uk/blaisycastleestate](http://www.bristol.gov.uk/blaisycastleestate)



[blaise.estate@bristol.gov.uk](mailto:blaise.estate@bristol.gov.uk)



0117 922 3719



**FRIENDS OF BLAISE**

Bristol City Council is grateful to the generous financial contribution made by the Friends of Blaise towards production of these leaflets

**1** Start at Blaise Cafe. Walk towards the Blaise House, along surfaced path with play area on left hand side.



Blaise House

**2** At path junction near Blaise house bear right onto path leading slightly down hill. Continue on surfaced path leading down into the gorge, with iron railings on left hand side.

**3** Cross over Mill bridge at bottom of hill, turn right and proceed along surfaced path, running parallel to Hazel Brook.



The Mill

**4** Continue past Tarn Lake. As surfaced path just starts to rise, proceed to the right, down a woodland path (next to large base of upturned tree).



Tarn Lake

**5** Path continues to run parallel with Hazel Brook until wooden bridge. Cross bridge, bear right to gap in wall (area can be muddy).

**6** On passing through wall, bear left to proceed up hill, partially defined by stone and log steps. Warning this hill is long and steep.

**7** At junction of paths at top of hill, continue straight ahead along woodland track. Past the bend and start of decline, take short track off to left which leads onto the main field.

**8** Make way across field in direction of Café.



Wooden bridge

*A map of these directions is printed over leaf.*