

DEPRIVATION IN BRISTOL 2010

Source: Department for Communities and Local Government, Indices of Deprivation 2010

The Index of Multiple Deprivation 2010 combines a number of indicators, chosen to cover a range of economic, social and housing issues, into a single deprivation score for each small area in England. This allows each area to be ranked relative to one another according to their level of deprivation. As with the 2007 and 2004 Indices, the Indices of Deprivation 2010 have been produced at Lower Super Output Area level, of which there are 32,482 in the country.

The methodology underpinning the 2010 and the 2007 and 2004 indices are largely the same though there have been small changes to some of the underlying indicators. The ID2010 updates the ID2007 with more up-to-date data, the majority of which is as at year 2008.

The Indices are based on the premise that multiple deprivation is made up of the following separate dimensions, or 'domains' of deprivation: Income Deprivation, Employment Deprivation, Health Deprivation and Disability, Education, Skills and Training Deprivation, Barriers to Housing and Services, Crime and Living Environment Deprivation.

Lower Layer Super Output Areas are relatively small areas, each with an average population of 1,500 residents, and enable the comparison of like sized areas across the country possible. Nationally there are 32,482 LSOAs in comparison to over 8,500 wards. In Bristol there are a total of 252 LSOAs. This geography enables the identification of pockets of deprivation that are a feature of urban areas - pockets that can be overlooked if only looking at data at ward level.

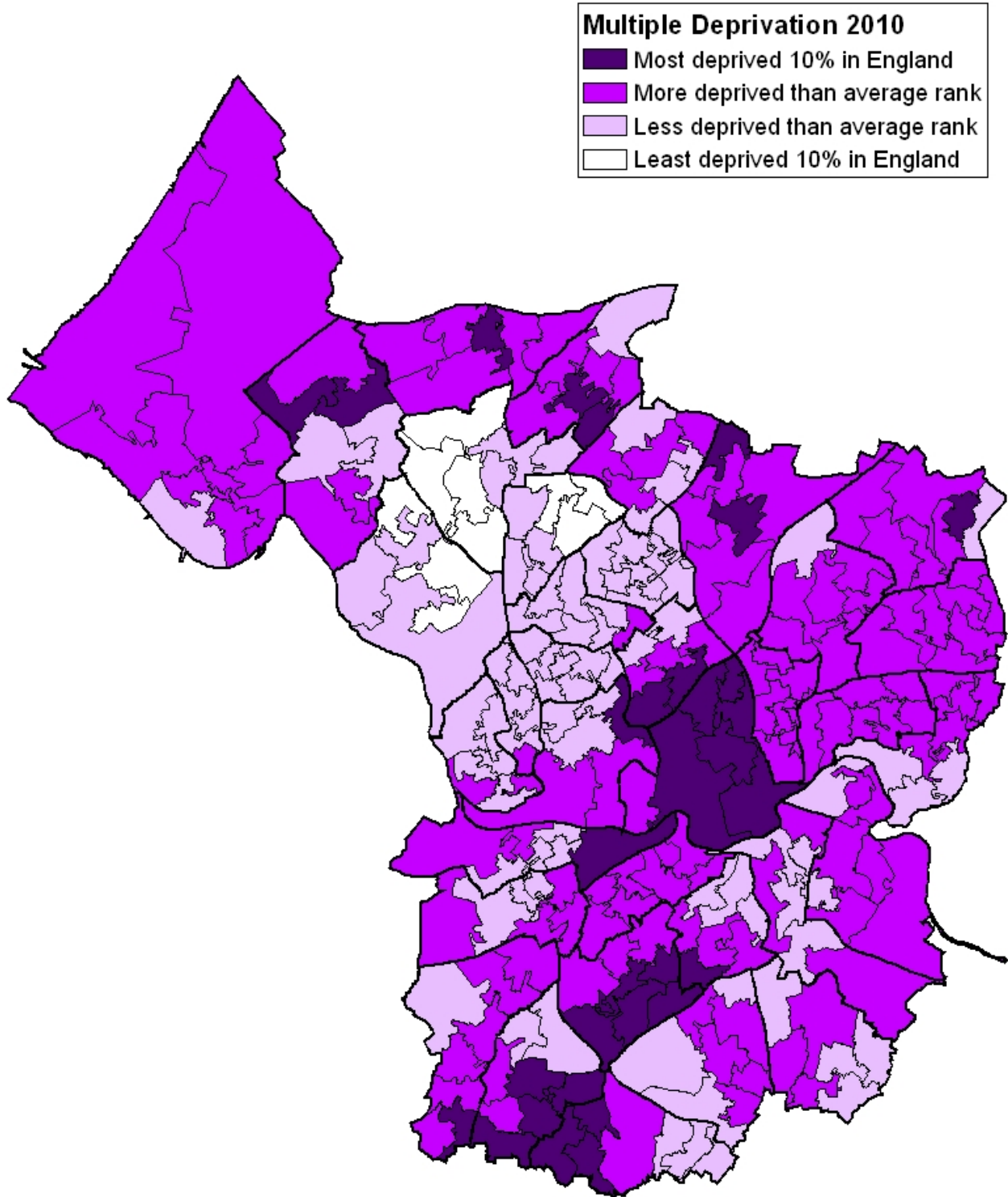
When quoting results from the ID2010, the number of LSOAs that fall within the most deprived 10% of all LSOAs in England is usually quoted. The results for Bristol are summarised in the table below:

No. of Bristol SOAs (out of 252) in:	IMD	DOMAINS						
		Incom e	Employ ment	Health & Disabili ty	Educati on, Skills & Trainin g	Barrier s to Housin g & Service s	Crime	Living Environ ment
Most deprived 10% England	32	26	27	19	51	0	99	15
07-10 change in number LSOAs in most deprived 10%	-7	-4	+2	-7	-10	-11	+1	+3

The map below shows the new map of Multiple Deprivation in Bristol:

Deprivation in Bristol 2010

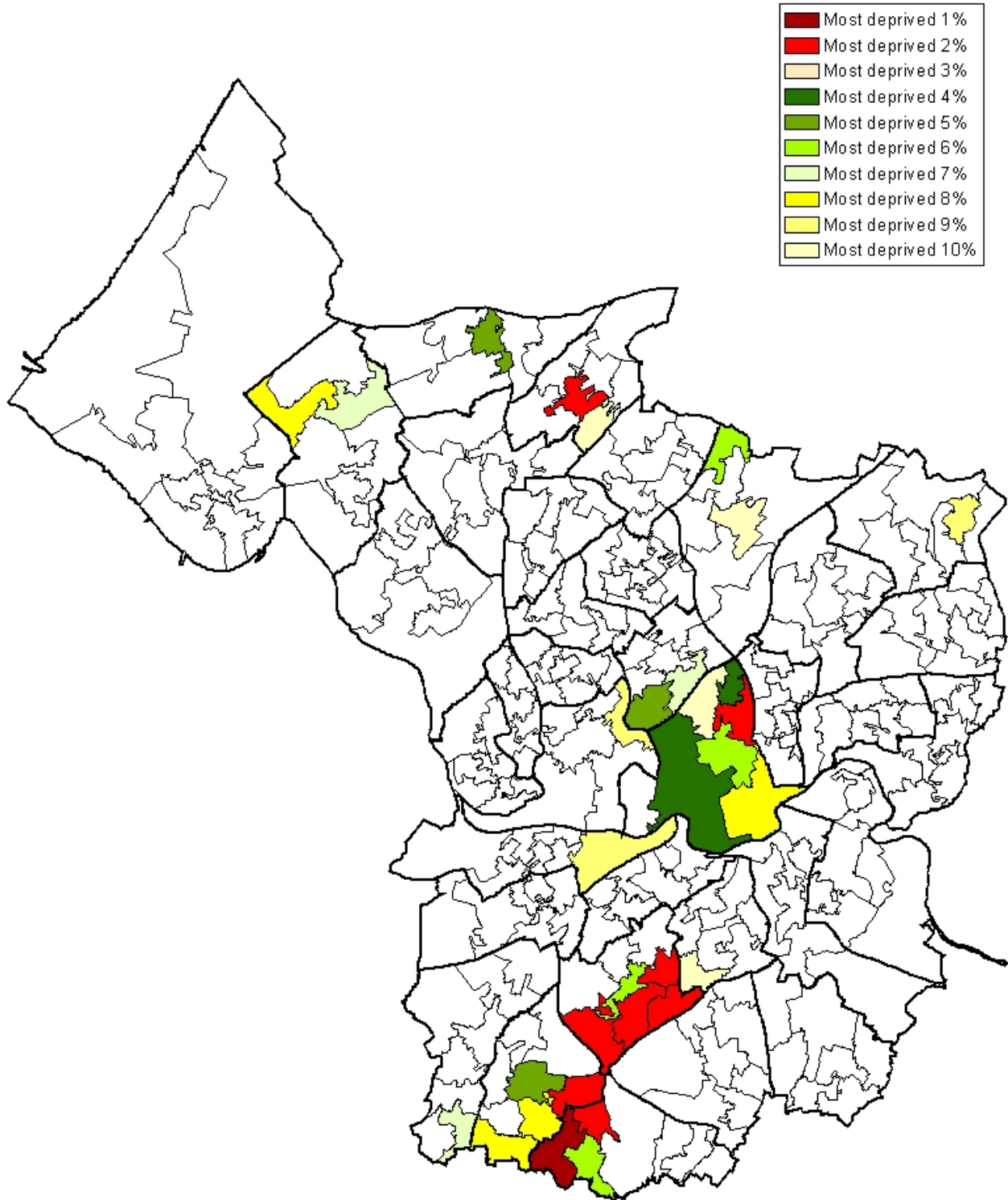
Source: DCLG English Indices of Deprivation 2010
analysed by Consultation, Research and Intelligence, Bristol City Council



Map: ONS Super Output Area boundaries Crown Copyright 2004
and © Crown Copyright Bristol City Council 100023406 2006
© Crown Copyright, Bristol City Council 100023406 2011

Deprivation in Bristol 2010

Source: DCLG English Indices of Deprivation 2010
analysed by Consultation, Research and Intelligence, Bristol City Council



Map: ONS Super Output Area boundaries Crown Copyright 2004
and © Crown Copyright Bristol City Council 100023406 2006
© Crown Copyright, Bristol City Council 100023406 2011

Initial observations on the 2010 results:-

- Over 5 million people lived in the most deprived areas in England in 2008 and 38 per cent of them were income deprived;
- Liverpool, Middlesbrough, Manchester, Knowsley, the City of Kingston-upon Hull, Hackney and Tower Hamlets are the local authorities with the highest proportion of Lower layer Super Output Areas amongst the most deprived in England;
- 98 per cent of the most deprived LSOAs are in urban areas but there are also pockets of deprivation across rural areas;
- 88 per cent of the LSOAs that are the most deprived in 2010 were also amongst the most deprived in 2007;
- Bristol continues to have deprivation 'hot spots' which are amongst some of the most deprived areas in the country yet are adjacent to some of the least deprived areas in the country;
- Bristol has 32 LSOAs in the most deprived 10% in England for multiple deprivation (compared to 39 in 2007 and 35 for 2004). Of these 32 LSOAs there are 14 in the most deprived 5% and 1 in the most deprived 1%;
- There are less LSOAs in the most deprived 10% in 2010 than in 2007 for all domains with the exception of Employment, Crime and Living Environment. NB Although comparison over time may suggest improvements, in fact it may just be that other areas of the country have become more deprived. The rank of the LSOA shows it's relative position to other LSOAs, so an LSOA may become RELATIVELY less deprived, although actual levels of deprivation may have improved, worsened or stayed the same.
- The number of people living in the most deprived 10% of LSOAs is 60,665 people, which is 14% of all residents living in Bristol;
- Area 7 LSOAs moving out of the most deprived 10% in England are:
 - E01014517 Sherrin Way (Bishopsworth ward)
 - E01014568 St Marks Road (Easton ward)
 - E01014584 Glyn Vale (Filwood ward)
 - E01014595 Withywood (Hartcliffe ward)
 - E01014610 Wharnecliffe Gardens (Hengrove ward)
 - E01014660 Lockleaze North (Lockleaze ward)
 - E01014729 Marksbury Road (Windmill Hill ward)

In the summer, the full results for Bristol will be presented in a report ' Deprivation in Bristol 2010' which will be made available on the Bristol City Council web site:
www.bristol.gov.uk/statistics

Jayne Mills
Consultation, Research and Intelligence and Strategic Planning
Bristol City Council
March 2011