

Disabled Children Network News

Children & Young People's Service - Edition 9

Winter 2009

From the Register of Disabled Children

Welcome to the 9th edition of our newsletter for disabled children. We hope this information is useful and that you all have a good Christmas.

Community Care Update

On Tuesday 4th August 2009, Duncan and his colleagues from the community care team, took a group of children to Puxton Park Farm and Activity Centre. Unfortunately the weather wasn't in their favour that day, so the team had to make a dash to see the animals during gaps in the rain! For lunch they went to the cafe and had cooked lunches, which no-one had any trouble in



finishing! It was a really enjoyable day and the children spent most of their time playing on the huge indoor soft play equipment and slides.

The park is also a really good venue to take wheelchair users, there is plenty to see and do e.g. bird displays and small animal feeding and holding sessions and donkey rides! This venue was highly recommended by our team to visit at any time of the year! The Community Care Group also went to the Balloon Fiesta and it was a really fun day out for everyone! There



were lots of activities happening and stalls to go and look at which the children really liked. There were also lots of displays and demonstrations that the group took a lot of interest in. There was a demonstration by the TA which we had front row seats for! The demonstration was all about in-land and air warfare, the helicopter stunts and smoke signals were definitely a favourite with youth group members!



Bookstart and Bristol Libraries

Hello, my name is Roxanne and I am the Early Years Librarian for Bristol Libraries. A big part of my role is managing Bookstart for the Bristol area. For those of you who aren't aware of Bookstart it is a national programme that encourages all parents and carers to enjoy books with children from as early an age as possible. Working through libraries, health centres and early years settings, Bookstart gives the gift of free books to children at around nine months, 15 months and three years.

Bookstart also provides packs for both blind and deaf children. Bookshine aims to help deaf babies and toddlers to get 'bookstarted'. The packs contain two specially chosen books designed to stimulate children's senses, including a touch and feel book and a nursery rhyme book featuring BSL signs. Free Bookshine packs are available for deaf children up to (and including) the age of four. The Booktouch aims to get blind and partially sighted babies and toddlers 'bookstarted'. As with the Bookshine packs Booktouch packs are free to all blind or partially sighted children up to (and including) the age of four. Similarly to the Bookshine packs, Booktouch Packs contain two specially chosen touch and feel books to stimulate a child's senses as well as a Bookstart Rhymetime CD and booklet.

As well as managing Bookstart I also spend a lot of time visiting different groups for early years children where I hold a storytime and talk to children about Bristol Library Services. If you would like me to visit your group or you would like more information about these Bookstart packs then please contact Roxanne on 0117 3772718 or email bookstart@bristol.gov.uk

www.bristol.gov.uk/libraries

www.bookstart.org.uk



bookstart
est. by booktrust 1992





The Princess Royal Trust *for Carers*

Parent Participation Meetings

If you are a parent carer we need your involvement

By this we mean any parent caring for a child under 18 who has a long term illness, disability, special educational need or life limiting condition. Parent Carers in Bristol are getting together to devise innovative and exciting ways to influence the development of services.

This is part of the National Aiming High for Disabled Children initiative and, amongst other things, seeks to increase and strengthen parent participation in service planning. It is an opportunity to strengthen the voice of parent carers, but we need more parent involvement. The more parents involved, the louder your voice.

The current second phase programme ends in March 2010 so it important to get involved now. Funding for the following year may be available, but this will depend on how things have progressed this year.

The Princess Royal Trust Carers Centre are Lead in this parent participation work, and Supportive Parents are key stakeholders along with representatives from Bristol Children and Young Peoples Aiming High team. We are currently supporting parents to set up a steering group to:

- develop a new interactive website for parents
- organise a twice yearly conference
- set up subject based focus groups – what you decide is important can then be fed through to Children and Young Peoples Services, Education and Health.

The next meeting of the steering group will be on Wednesday 6th January 2010 10 a.m. To 12 p.m. at the Carers Centre, The Vassall Centre, Gill Avenue, Fishponds, Bristol, BS16 2QQ. Please call the Carers Centre on the number below to book a place.

This is a good time to get involved while the spotlight is on disabled children and their families. Training will be provided for parents wishing to get involved and who would like a chance to develop skills and confidence. Transport costs (including taxis if necessary) and child care will be reimbursed for parents attending meetings. **For those of you who would like a chance to get together with other parents in similar situations – this is the perfect opportunity to meet others and to make a difference.**

There will also be a **Coffee Morning** for Parent Carers at the Carers Centre on Tuesday 12th January from 10 a.m. To 12 p.m. Once again, please call to book a place.

For more information or to book places please email NettieH@carers-bs.org.uk or phone Carers Line on 0117 965 2200.

Santa Specials

Bristol Zoo

Visit Santa in his magical grotto at Bristol Zoo. Each child will receive a personalized gift. £3.80 per child (not including zoo entrance) 5-6 December, 12-13 December, and every day from 19-23 December. The Annual Zoo membership for a disabled child is £14.50, so you could pay for the Annual Pass and this event out of your £20 and be able to keep going back for free.



Bristol Ferryboat Company

Sail with Santa on his Christmas Ferry Sleigh. This 45 minute trip offers a magical ride around the Bristol Harbourside from 12-24 December at 1 p.m., 2 p.m. and 3 p.m. from Cascade Steps in the city centre (£9.50 each). This includes fun gifts for the kids and a mince pie and glass of sherry for mum and dad.

Please contact:
0117 9273416 or visit the website at www.bristolferry.com
Booking highly recommended

Avon Valley Railway

Avoid the busy shops and long queues and come and see Santa and his helpers on his steam train. From 29 November to 24 December Father Christmas will be making his way round the train to give each of the children a present and a festive biscuit or mince pie to mum and dad. Tickets are £8 for adults and children.

For further details please contact:
Website www.avonvalleyrailway.org
or call 0117 923 7296



Families in Touch

Families in Touch are an organisation offering support to families with a disabled child. Whether you're going through diagnosis, medical issues, educational tribunals or need help to relieve stress and/or isolation, contact with other families who are in the same situation and going through similar problems can be a huge help and support. They organise weekly outings and school term activities such as, theatre trips, disco's, shopping trips and other social events.

For further details contact:
0117 982 0584 Email: family001@btconnect.com.

Short breaks Health Support Service Launch

Last November we launched the Short Breaks Health Support Service, a joint venture between Bristol City Council and NHS Bristol. The launch was as a drop in event with a number of council led services and voluntary organisations who work with disabled children hosting information stalls. Parents got the opportunity to find out about the service itself and also about the range of services available to disabled children and young people in Bristol.

For those who couldn't attend here are the highlights.

What is the service?

This service will provide staff at universal clubs and settings (e.g. brownies, scouts, youth and play groups) free, high level training to enable them to meet the individual needs of disabled children and young people with additional and complex health needs.

Who can benefit?

Any organisation or setting which works with children or young people who may need additional 'health' training to enable a disabled child to join in with their activities. This training will be carried out by experienced nurses from North Bristol NHS Trust, University Hospitals Bristol NHS Foundation Trust and Lifetime.

What's the catch?

There is no catch. If you are a parent and you have found it difficult to get your child into a club or group or you are worried the staff won't know how to address your child's specific needs we may be able to help. Alternatively if you are an organisation that works with children this service could provide you with the training you need to be able to work more confidently with disabled children with specific health needs.

Want to find out more?

Contact wendy.sharp@bristol.gov.uk or call 0117 35 32282

Bridging the gap

Three bridging workers are currently being recruited to be based across the City and who will work closely with the Inclusive Play Project and the Short Breaks Health Support Service to:

- Link specific children and families to appropriate local play settings
- Support and provide information to parents of disabled children
- Help parents assess play settings and identify equipment, staff training, PA and transport needs
- Offer support to settings to assist inclusion

For more information about the Inclusive Play Project and the roles of the Bridging Workers please contact:

wendy.sharp@bristol.gov.uk or call 0117 35 32282

Disabled Children Service Update

This year the Disabled Children Service restructured. It now comprises of:

- Duty and Assessment Team
- Disabled Children in Care Team
- Occupational Therapy Team
- Bristol Autism Project
- Social Worker for deaf children and young people

A child is eligible for an assessment if they are:

- Aged between 0-18 years
- Live within the boundaries of Bristol City Council
- Are assessed as disabled
- Have needs arising from their impairment that cannot be met by other services available to children in general

Duty and Assessment Team

The Duty and Assessment Team comprises of a Senior Practitioner, 2 Early Years Social Workers working with 0-5 year olds, 3 Social Workers for the 5-18 year olds and a Transitions Social Worker for young people who will require adult services.

Disabled Children in Care Team

The Disabled Children in Care Team provides social work support to disabled children and young people who are in care or receiving overnight short breaks.

Occupational Therapy Team

Occupational Therapists work with disabled children and their families/carers to increase their independence, assist with safe care and maintain safety in their home and school environments.

Bristol Autism Project (BAP)

The BAP is a collaborative service with the National Autistic Society (NAS) working together with Bristol's Children and Young People Service to support children and young people with Autistic Spectrum Disorders.

The BAP is a city wide service and consists of three discrete strands:

Weekly out of school clubs for young people (aged 8 to 18 years old) with Asperger's Syndrome and high functioning autism.

Holiday Activities for children and young people with any diagnosis of autism (aged 0 to 18 years) - these activities are also for siblings and require that the parent or carer accompany the children and their siblings.

Direct work and whole family support for any young person with autism and challenging behaviours (0 to 18 years). This direct work is provided to those parents and carers who are experiencing difficulties with safely managing their child's behaviour and there is a risk of family breakdown.

The BAP will also contribute to the wider development of services for all children and young people with autism and will offer regular training events for parents, carers and all relevant professionals.

Referral Process:

Out of School Clubs: Referral form available from NAS:
Amy Phipps 0117 974 8400 e-mail: amy.phipps@nas.org.uk

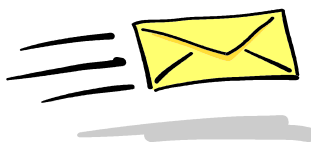
Holiday Activities: Self referrals or from any agency:
Leise Stephenson 0117 353 4087 or Shirley Young-Lumsden 0117 353 4088

Direct Work: Referrals are from social workers only

If you feel you need any advice or support we have a social worker on duty from 8.30 a.m.-5 p.m. Monday to Thursday and 8.30 a.m.-4.30 p.m. on Friday. If you wish to make a referral to the service please call the Referral and Information Assistant who will be happy to help.

Please contact Dawn Cole - Referral and Information Assistant on 0117 903 8250
or e-mail disabledchildren@bristol.gov.uk

E-mail



If you would like to receive information and copy of future newsletters via your e-mail please let us have your e-mail address. This is environmentally friendly, would help keep costs down and enable us to send more regular mailings to you.

Phone Dawn Cole on 0117 903 8250 or e-mail me at dawn.cole@bristol.gov.uk
Or write to Bristol Register of Disabled Children,
5 Knowle West Health Park, Downton Road, Knowle, Bristol BS4 1WH