

## How can you help?

Firstly, when you carry out your plumbing work, make sure all your waste water is directed to the foul sewer. This means it will not pollute your local stream.

If you are unsure which is your foul sewer and which is your surface water drain, contact Operation Streamclean for free advice on the number below.

Secondly, with a new development, it is important that existing older drainage should be disconnected correctly whereby any drain that is not intended to be re-used and has no other drain discharging into it is properly sealed / capped off as close to the sewer connection as possible with a substantial concrete plug of at least 8". This will prevent the spread of rats and disease.

For more information, advice or help, please get in touch by calling us on

**0117 922 4452**

*and ask for Operation Streamclean*

***By working together we can make our environment better***

With the support of



Environmental Quality  
The CREATE Centre  
Smeaton Road  
Bristol BS1 6XN

Pest Control Services  
7 - 8 Feeder Road  
St Philips Marsh  
Bristol BS2 0SB



Wessex Water  
Headquarters  
Claverton Down  
Bath  
BA2 7WW



Environment Agency  
Rivers House  
East Quay  
Bridgwater  
Somerset  
TA6 4YS

With the support & co-operation of Bristol City Council Building Control Department, Brunel House, St George's Road, Bristol, BS1 5UY.



## Planning some plumbing?

Operation Streamclean advice leaflet for DIY plumbers

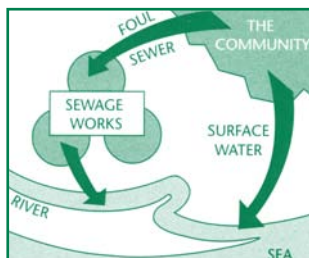


This information advice leaflet provides advice and guidance to those of you re-plumbing your kitchens or bathrooms within the Bristol area.

*Get it right the first time ... Save yourself time, money and effort.*

## **Two Different Drains ... Two Different Destinations**

Many urban areas, particularly those constructed since the 1960's, have two completely separate drainage systems.



One is the surface water drainage system. This collects the rainwater from our roofs, drives and roads and drains into the streams and rivers.

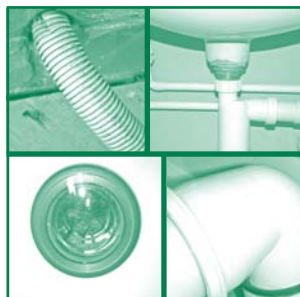
The other drainage system is the foul sewer. This collects waste water from our homes and routes it to the local sewage works. Here it is treated and cleaned before being returned to the environment.

This works well – until a home is connected to the wrong drainage system. And, unfortunately, the appliances in some homes are wrongly connected.

The biggest problem with pipes, of course, is that they aren't easy to follow. We only know that homes are wrongly connected when local streams become polluted with household waste water. How does this happen? It's all too easy – and with disastrous results.

Often when an extension is built, a kitchen re-plumbed or a new washing machine or dishwasher installed, the householder, plumber or builder connects the outlet pipe to the surface water drain, not the foul sewer. This waste water not only pollutes local streams, endangering or even killing wildlife, it also poses a potential public health risk.

## **What is Operation Streamclean?**



Operation Streamclean is a partnership between Bristol City Council, The Environment Agency & Wessex Water. The partnership was set up in 1992 to specifically identify wrong drainage connections at properties.

The survey team undertake inspections throughout Bristol. They examine connections to the foul and surface water drainage systems finding out where the wrong connections are. They then advise householders, if required, on making the 'right connections' to improve the local environment.

Although the survey work is carried out by three organisations, there is just one office to deal with and just one phone number to use:

**0117 922 4452**

*please ask for  
Operation Streamclean*



## **Building Control Supporting Streamclean**

Operation Streamclean continues to be a success helping to identify and reduce pollution entering Bristol's watercourses with the support and co-operation of Bristol City Council Building Control.

This means that Operation Streamclean is involved in the assessment of drainage information regarding new builds and extensions to existing properties within Bristol.

If you are developing a new property, re-developing an old one or extending your own, Operation Streamclean are happy to provide supplementary guidance and advice about the suitability of drainage connections.

If Operation Streamclean find that you have installed an illegal drainage connection you will be required to correct the connection at your own expense, so it is advisable to take advantage of the advice on offer at the start of your project.

### **The Buildings Act**

In exceptional circumstances where a property owner does not rectify illegal drainage installations, the Building Regulations Team will have no choice but to take enforcement action under Section 36 of the Building Act or alternatively your Local Environmental Health Officer may take action under Section 59 of the Building Act.