

Fishponds Library

Robinson House, Hockeys Lane

Bristol, BS16 3HL

Tel: 0117 903 8560

Email: fishponds.library@bristol.gov.uk



Ward:

Eastville

Transport links:

Located just off main Fishponds Road. Bus stops close by. Adjacent to supermarkets.

Building condition:

Located in Robinson House. New library location from 2012, shared space with Citizen Service Point until March 2017. Building needs some updating.

Accessibility:

Fully accessible public space.

Opening hours:

Mon	10:00 – 17:00
Tue	10:00 – 17:00
Wed	<i>closed</i>
Thurs	11:00 – 19:00
Fri	10:00 – 17:00
Sat	10:00 – 17:00
Sun	<i>closed</i>

Total hours open:

36 hours per week

Number of public computers:

6

Self-service kiosks:

2

Usage figures (1 July 2016 – 31 March 2017)¹

Visits ²	45,742
Items borrowed	51,882
Computer uses ³	8,498
Active membership ⁴ <small>(at 31 March 2017)</small>	3,015

Indicative running costs of building⁵

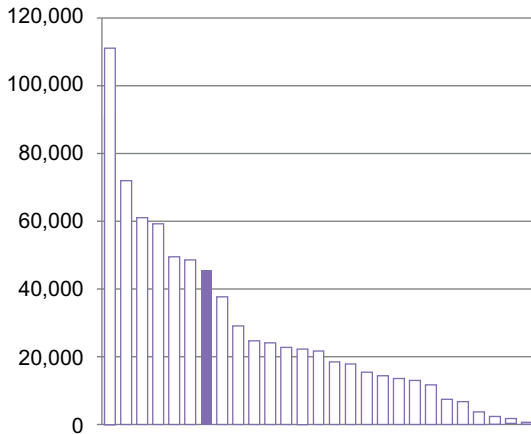
£22,624

Fishponds Library

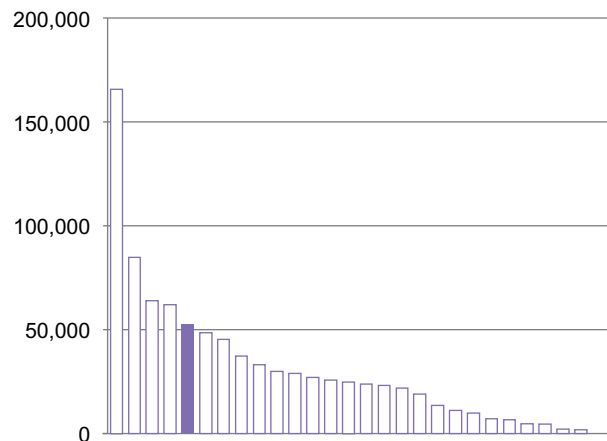
Usage compared to other Bristol branch libraries⁶ July 2016 – March 2017¹

Other libraries 
This library 

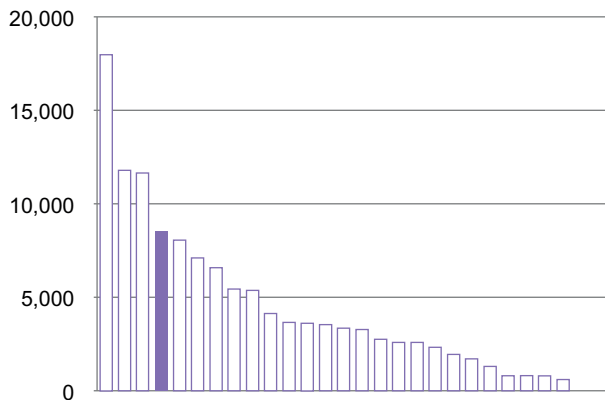
Total visits²



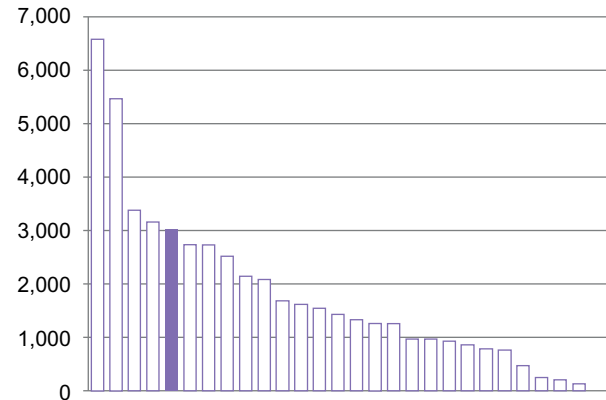
Total items borrowed



Total computer uses³



Total active members⁴



Notes on usage figures, costs and charts

- 1 The period used is July 2016 – March 2017. This is primarily because of the change of library computer system during May and June 2016 and the availability and reliability of the data during this changeover period.
- 2 Visits = door count of visitors to the library via use of electronic door counter during the period.
- 3 Computer uses = number of computer bookings during the period.
- 4 Active members as of 31 March 2017. Active members are those who have issued, renewed, returned or reserved an item, or have booked a computer session in the past 12 months.
- 5 Running costs for the library building include rates, utilities, cleaning, waste management, rent, service charges, repairs and maintenance contracts and call outs, security alarms, security call outs, and pest control. These figures do not include library staffing costs.
- 6 Usage charts do not include Central Library.