

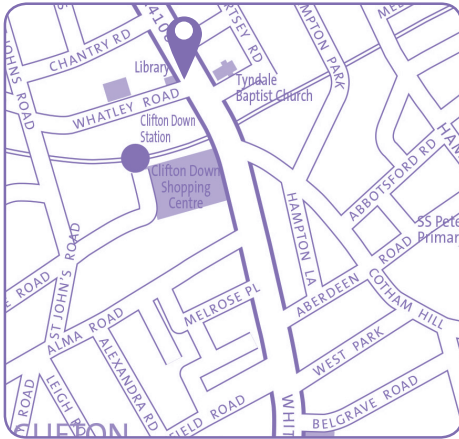
Redland Library

Whiteladies Road,

Bristol, BS8 2PY

Tel: 0117 903 8549

Email: redland.library@bristol.gov.uk



Ward:

Clifton Down

Transport links:

Located on main road adjacent to retail centre. Bus stops close by and on major bus route.

Building condition:

Built in the 1880s. Poor condition internally and externally. Conservation status which makes changes and improvements difficult and expensive. Last redecorated 2003, further layout changes in 2011.

Accessibility:

Library on two levels with small lift available. No accessible toilet.

Opening hours:

Mon	<i>closed</i>
Tue	11:00 – 17:00
Wed	11:00 – 19:00
Thurs	11:00 – 17:00
Fri	11:00 – 17:00
Sat	11:00 – 17:00
Sun	<i>closed</i>

Total hours open:

32 hours per week

Number of public computers:

11

Self-service kiosks:

3

Usage figures (1 July 2016 – 31 March 2017)¹

Visits ²	61,474
Items borrowed	62,712
Computer uses ³	11,682
Active membership ⁴ <small>(at 31 March 2017)</small>	3,358

Indicative running costs of building⁵

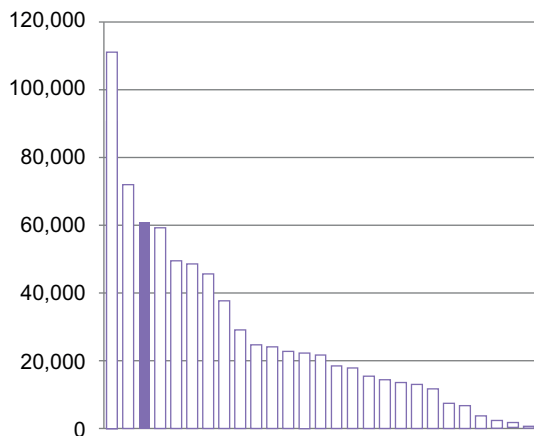
£21,635

Redland Library

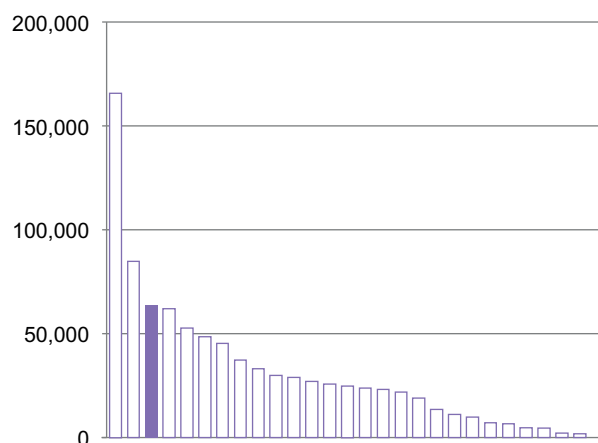
Usage compared to other Bristol branch libraries⁶ July 2016 – March 2017¹

Other libraries 
This library 

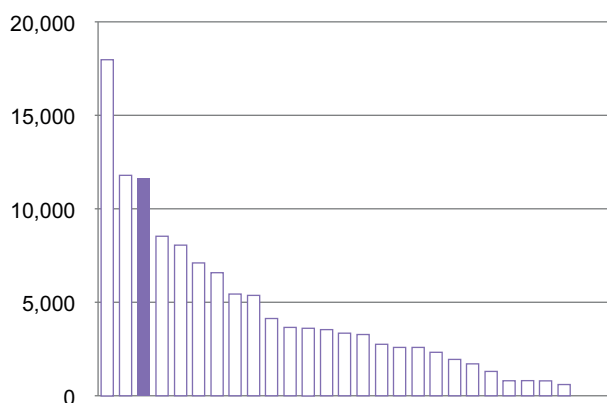
Total visits²



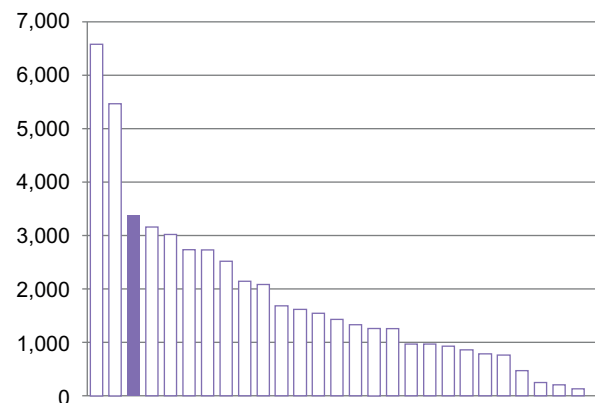
Total items borrowed



Total computer uses³



Total active members⁴



Notes on usage figures, costs and charts

- 1 The period used is July 2016 – March 2017. This is primarily because of the change of library computer system during May and June 2016 and the availability and reliability of the data during this changeover period.
- 2 Visits = door count of visitors to the library via use of electronic door counter during the period.
- 3 Computer uses = number of computer bookings during the period.
- 4 Active members as of 31 March 2017. Active members are those who have issued, renewed, returned or reserved an item, or have booked a computer session in the past 12 months.
- 5 Running costs for the library building include rates, utilities, cleaning, waste management, rent, service charges, repairs and maintenance contracts and call outs, security alarms, security call outs, and pest control. These figures do not include library staffing costs.
- 6 Usage charts do not include Central Library.