

# St George Library

Church Road,  
Bristol, BS5 8AL  
Tel: 0117 903 8523  
Email: [st.george.library@bristol.gov.uk](mailto:st.george.library@bristol.gov.uk)



## Ward:

St George West

## Transport links:

Located on the main road. Bus stops close by and on major bus route.

## Building condition:

Built in the 1970s. Fully refurbished in 2007, minor layout changes 2011. Some building upgrades in 2016 for Extended Access facility. Overall condition good.

## Accessibility:

Ramped access. Accessible toilet available.

## Opening hours:

St George is an Extended Access library<sup>6</sup>

Mon	08:00 – 19:00 (15:00 – 19:00 staffed)
Tue	08:00 – 19:00 (10:00 – 14:00 staffed)
Wed	08:00 – 19:00 (13:00 – 17:00 staffed)
Thurs	08:00 – 19:00 (10:00 – 14:00 staffed)
Fri	08:00 – 19:00 (13:00 – 17:00 staffed)
Sat	08:00 – 19:00 (11:00 – 17:00 staffed)
Sun	closed

## Total hours open:

64.75 hours per week (26 hours staffed)

## Number of public computers:

10

## Self-service kiosks:

1

## Usage figures (1 July 2016 – 31 March 2017)<sup>1</sup>

Visits <sup>2</sup>	28,976
Items borrowed	37,393
Computer uses <sup>3</sup>	5,650
Active membership <sup>4</sup> <small>(at 31 March 2017)</small>	2,506

## Indicative running costs of building<sup>5</sup>

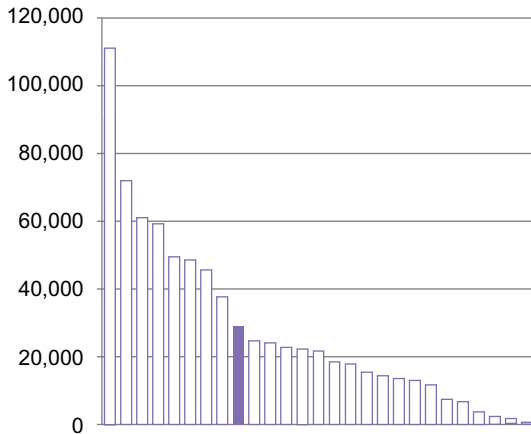
£20,026

# St George Library

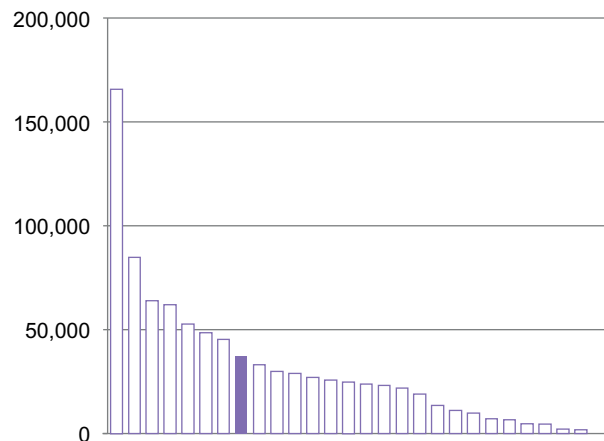
## Usage compared to other Bristol branch libraries<sup>7</sup> July 2016 – March 2017<sup>1</sup>

Other libraries   
This library 

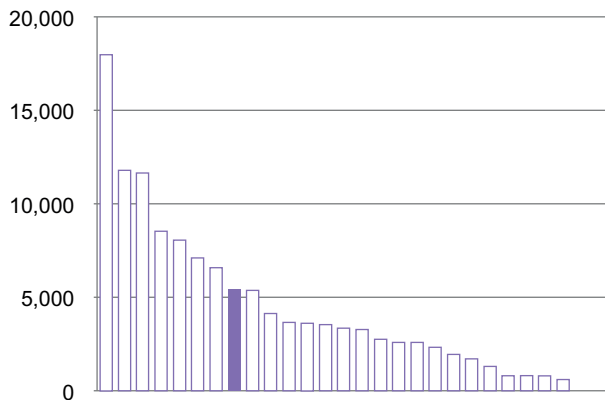
### Total visits<sup>2</sup>



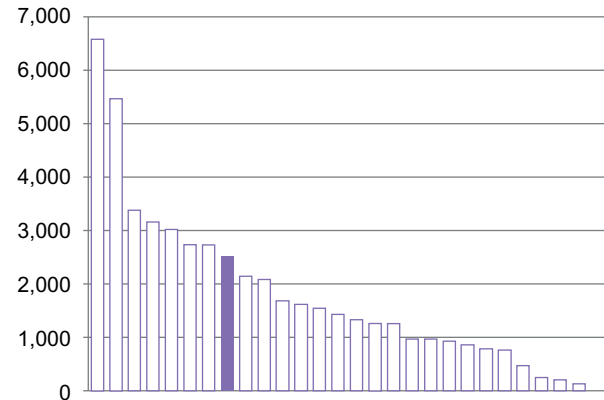
### Total items borrowed



### Total computer uses<sup>3</sup>



### Total active members<sup>4</sup>



## Notes on usage figures, costs and charts

- 1 The period used is July 2016 – March 2017. This is primarily because of the change of library computer system during May and June 2016 and the availability and reliability of the data during this changeover period.
- 2 Visits = door count of visitors to the library via use of electronic door counter during the period.
- 3 Computer uses = number of computer bookings during the period.
- 4 Active members as of 31 March 2017. Active members are those who have issued, renewed, returned or reserved an item, or have booked a computer session in the past 12 months.
- 5 Running costs for the library building include rates, utilities, cleaning, waste management, rent, service charges, repairs and maintenance contracts and call outs, security alarms, security call outs, and pest control. These figures do not include library staffing costs.
- 6 Extended Access libraries have technology installed that allows library members to use the library when no staff are present. There is a closed period of up to 15 minutes between staffed time and Extended Access time on Tuesday to Saturday.
- 7 Usage charts do not include Central Library.