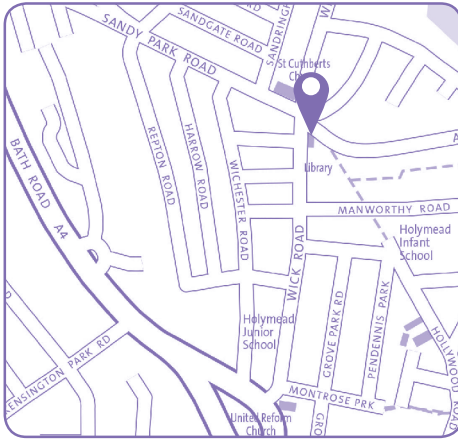


# Wick Road Library

Wick Road,  
Bristol, BS4 4HE  
Tel: 0117 903 8557  
Email: [wickrd.library@bristol.gov.uk](mailto:wickrd.library@bristol.gov.uk)



## Ward:

Brislington East

## Transport links:

Located on busy road, near retail outlets and schools. Bus stops close by.

## Building condition:

Built in the 1930s. Traditional library. Minor changes in 2011 when self-service kiosk was installed. Redecorated in 2013.

## Accessibility:

Ramped access into library.  
No accessible toilet.

## Opening hours:

Mon *closed*  
Tue 10:00 – 17:00  
Wed 10:00 – 17:00  
Thurs *closed*  
Fri 10:00 – 17:00  
Sat 11:00 – 17:00  
Sun *closed*

## Total hours open:

27 hours per week

## Number of public computers:

5

## Self-service kiosks:

1

## Usage figures (1 July 2016 – 31 March 2017)<sup>1</sup>

Visits <sup>2</sup>	24,345
Items borrowed	45,031
Computer uses <sup>3</sup>	2,432
Active membership <sup>4</sup> <small>(at 31 March 2017)</small>	2,124

## Indicative running costs of building<sup>5</sup>

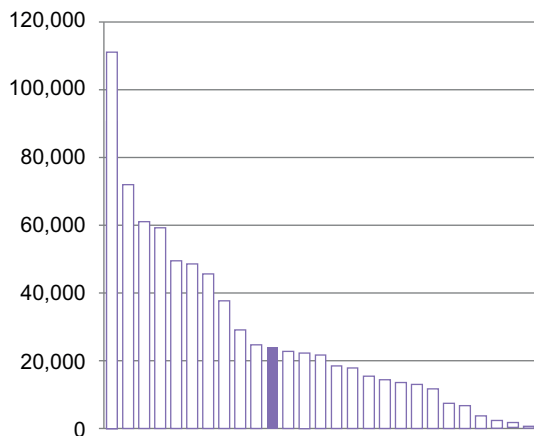
£13,591

# Wick Road Library

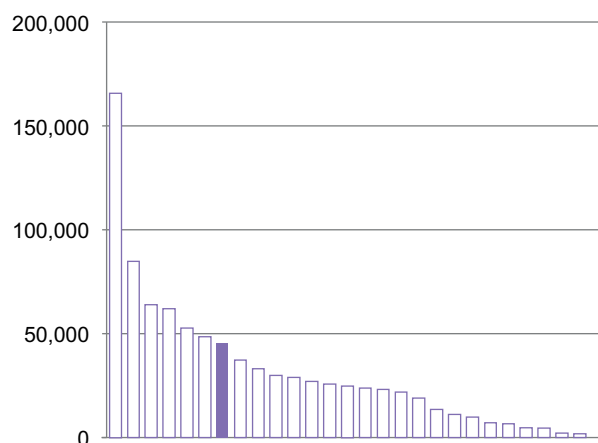
## Usage compared to other Bristol branch libraries<sup>6</sup> July 2016 – March 2017<sup>1</sup>

Other libraries   
This library 

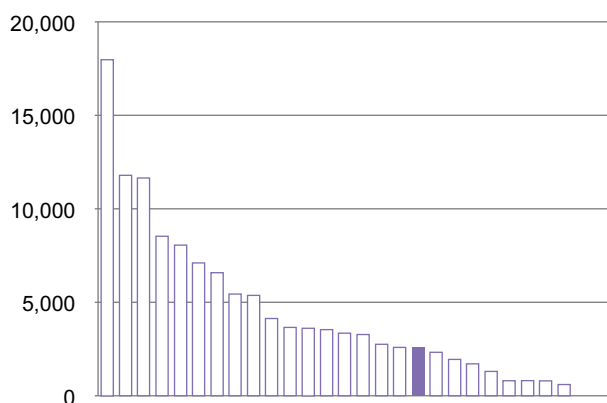
### Total visits<sup>2</sup>



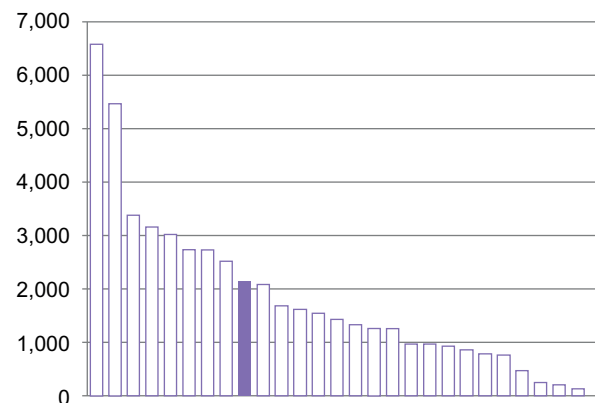
### Total items borrowed



### Total computer uses<sup>3</sup>



### Total active members<sup>4</sup>



## Notes on usage figures, costs and charts

- 1 The period used is July 2016 – March 2017. This is primarily because of the change of library computer system during May and June 2016 and the availability and reliability of the data during this changeover period.
- 2 Visits = door count of visitors to the library via use of electronic door counter during the period.
- 3 Computer uses = number of computer bookings during the period.
- 4 Active members as of 31 March 2017. Active members are those who have issued, renewed, returned or reserved an item, or have booked a computer session in the past 12 months.
- 5 Running costs for the library building include rates, utilities, cleaning, waste management, rent, service charges, repairs and maintenance contracts and call outs, security alarms, security call outs, and pest control. These figures do not include library staffing costs.
- 6 Usage charts do not include Central Library.