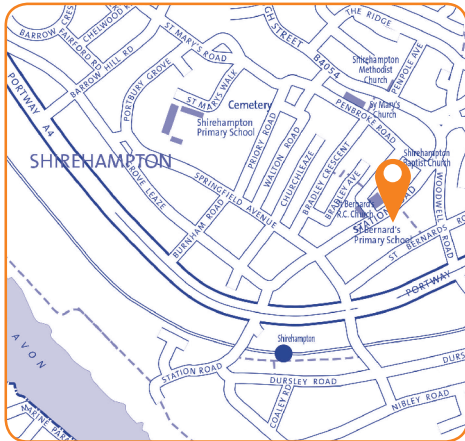


# Shirehampton Library

Station Road,  
Bristol, BS11 9TU  
Tel: 0117 903 8570  
Email: shirehampton.library@bristol.gov.uk



## Ward:

Avonmouth and Lawrence Weston

## Transport links:

Located to the side of Shirehampton Public Hall.  
Bus stops nearby. Short distance to retail area.

## Building condition:

Traditional, Grade II-listed building, 1900s.  
Library redecorated in 2013.

## Accessibility:

Not ideal as around the back of the building  
but accessible. No fully accessible toilet  
available for users.

## Opening hours:

Mon	13:00 – 17:00
Tue	<i>closed</i>
Wed	13:00 – 17:00
Thurs	10:00 – 14:00
Fri	13:00 – 17:00
Sat	10:00 – 14:00
Sun	<i>closed</i>

## Total hours open:

20 hours per week

## Number of public computers:

2

## Usage figures (1 April 2017 – 31 March 2018)

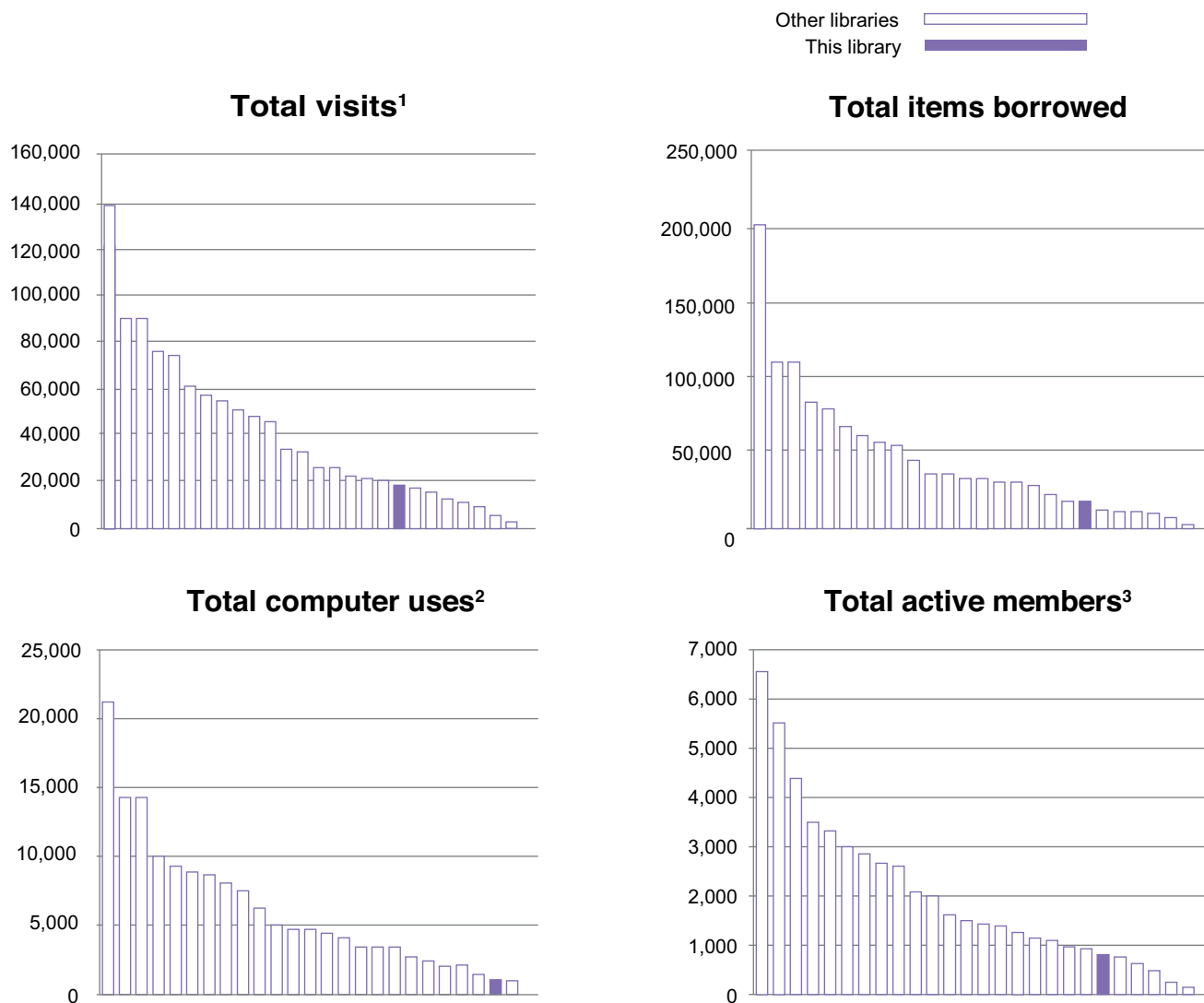
Visits <sup>1</sup>	17,470
Items borrowed	16,980
Computer uses <sup>2</sup>	932
Active membership <sup>3</sup> (at 31 March 2018)	795

## Indicative running costs of building<sup>4</sup>

£10,093

# Shirehampton Library

## Usage compared to other Bristol branch libraries<sup>5</sup> April 2017-March 2018



### Notes on usage figures, costs and charts

1. Visits = door count of visitors to the library via use of electronic door counter during the period.
2. Computer uses = number of computer bookings during the period.
3. Active members as of 31 March 2018. Active members are those who have issued, renewed, returned or reserved an item, or have booked a computer session in the past 12 months.
4. Running costs for the library building include rates, utilities, cleaning, waste management, rent, service charges, repairs and maintenance contracts and call outs, security alarms and security call outs. These figures do not include library staffing costs.
5. Usage charts do not include Central Library.

# Shirehampton Library community conversation

**2017**

**What you said you liked...**

- Free access to computers & the internet, especially for those who don't have access at home and job seekers
- Range of books for children & activities for children, families & schools

**What you didn't like...**

- Idea of closing any library

**Specific proposals and suggestions:**

- Business sponsorship to fund the service / protect libraries
- Expand Extended Access to more libraries
- Expand volunteering programme and/or have volunteers working alongside staff
- Mobile or pop-up libraries
- Generate more income to fund the service / protect libraries e.g. space hire
- Share space in buildings with other services e.g. community centre