

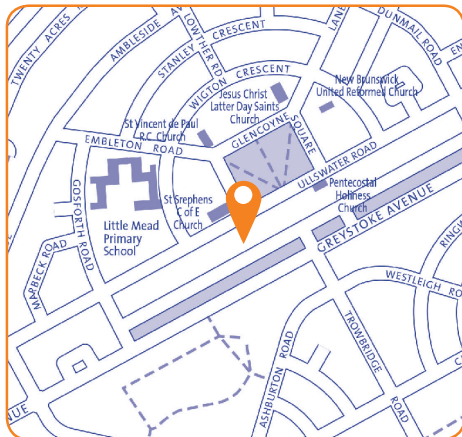
Southmead Library

Greystoke Avenue

Bristol, BS10 6AS

Tel: 0117 903 8583

Email: southmead.library@bristol.gov.uk



Ward:

Southmead

Transport links:

Located adjacent to retail area on a main road.
Bus stops close by on major bus routes.

Building condition:

Built in the 1960s. External appearance dated but good internal appearance, refurbished 2007. Staff area in poor condition.

Accessibility:

Access reasonable.
No accessible toilet available.

Opening hours:

Mon *closed*
Tue 11:00 – 17:00
Wed 11:00 – 17:00
Thurs *closed*
Fri 13:00 – 17:00
Sat 11:00 – 17:00
Sun *closed*

Total hours open:

22 hours per week

Number of public computers:

10

Usage figures (1 April 2017 – 31 March 2018)

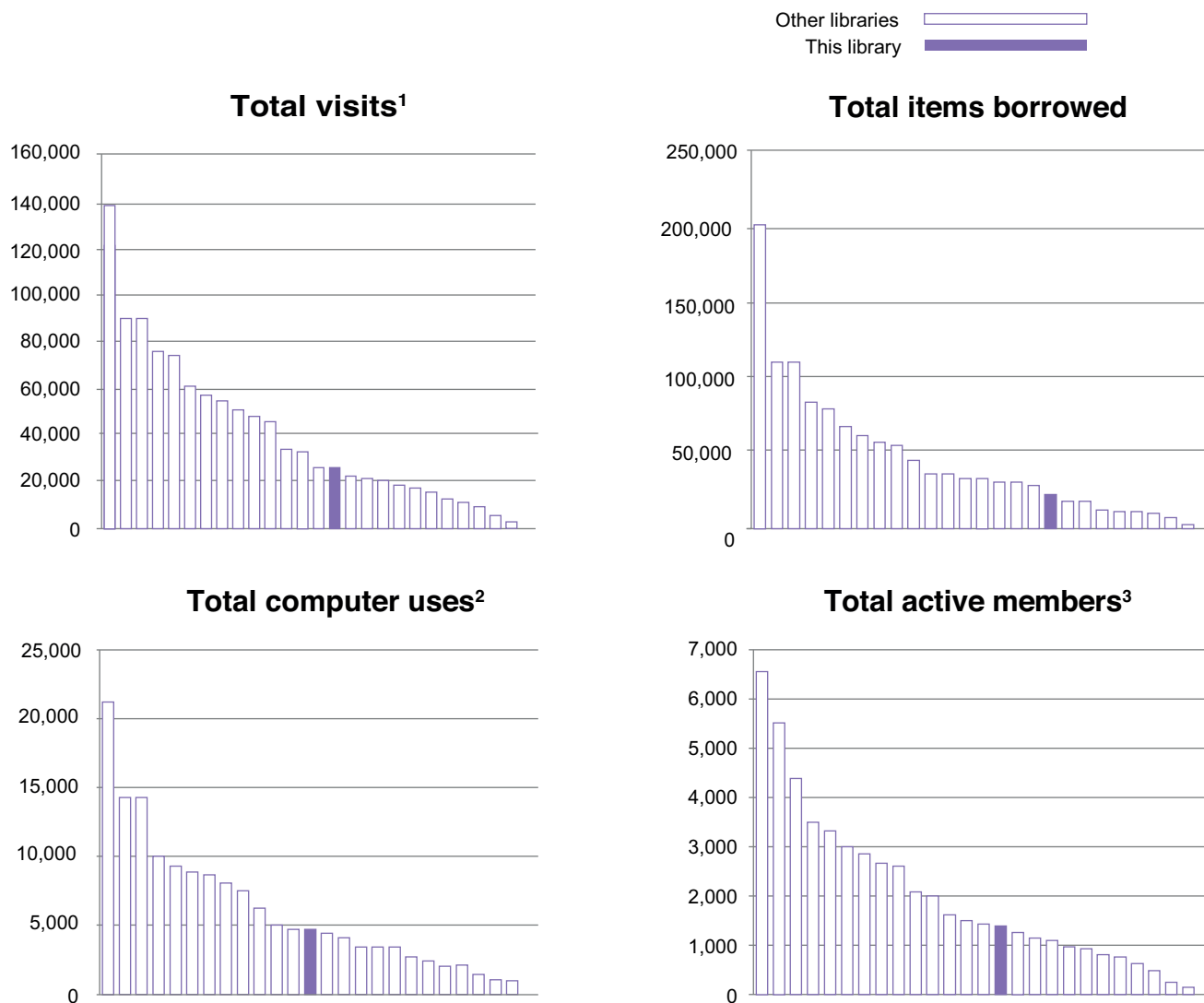
Visits ¹	25,267
Items borrowed	22,232
Computer uses ²	4,489
Active membership ³ (at 31 March 2018)	1,325

Indicative running costs of building⁴

£17,562

Southmead Library

Usage compared to other Bristol branch libraries⁵ April 2017-March 2018



Notes on usage figures, costs and charts

1. Visits = door count of visitors to the library via use of electronic door counter during the period.
2. Computer uses = number of computer bookings during the period.
3. Active members as of 31 March 2018. Active members are those who have issued, renewed, returned or reserved an item, or have booked a computer session in the past 12 months.
4. Running costs for the library building include rates, utilities, cleaning, waste management, rent, service charges, repairs and maintenance contracts and call outs, security alarms and security call outs. These figures do not include library staffing costs.
5. Usage charts do not include Central Library.

Southmead Library community conversation

2017

What you said you liked...

- Good location
- Community space / a social hub especially for people who are isolated, source of community information
- Free access to computers & the internet, especially for those who don't have access at home and job seekers
- Range of books for children & activities for children, families & schools

What you didn't like...

- Idea of closing any library
- No baby changing facilities

Specific proposals and suggestions:

- Expand Extended Access to more libraries
- Expand volunteering programme and/or have volunteers working alongside staff
- Generate more income to fund the service / protect libraries e.g. cafe, parcel pick up/drop off, retail subletting, desk hire
- Share space in buildings with other services e.g. citizens advice, council services
- Public toilets in libraries