

# St George Library

Church Road,  
Bristol, BS5 8AL  
Tel: 0117 903 8523  
Email: [st.george.library@bristol.gov.uk](mailto:st.george.library@bristol.gov.uk)



## Ward:

St George West

## Transport links:

Located on the main road. Bus stops close by and on major bus route.

## Building condition:

Built in the 1970s. Fully refurbished in 2007, minor layout changes 2011. Some building upgrades in 2016 for Extended Access facility. Overall condition good.

## Accessibility:

Ramped access. Accessible toilet available.

## Opening hours:

St George is an Extended Access library<sup>6</sup>

Mon 08:00 – 19:00 (15:00 – 19:00 staffed)  
Tue 08:00 – 19:00 (10:00 – 14:00 staffed)  
Wed 08:00 – 19:00 (13:00 – 17:00 staffed)  
Thurs 08:00 – 19:00 (10:00 – 14:00 staffed)  
Fri 08:00 – 19:00 (13:00 – 17:00 staffed)  
Sat 08:00 – 19:00 (11:00 – 17:00 staffed)  
Sun closed

## Total hours open:

64.75 hours per week (26 hours staffed)

## Number of public computers:

10

## Self-service kiosks:

1

## Usage figures (1 April 2017 – 31 March 2018)

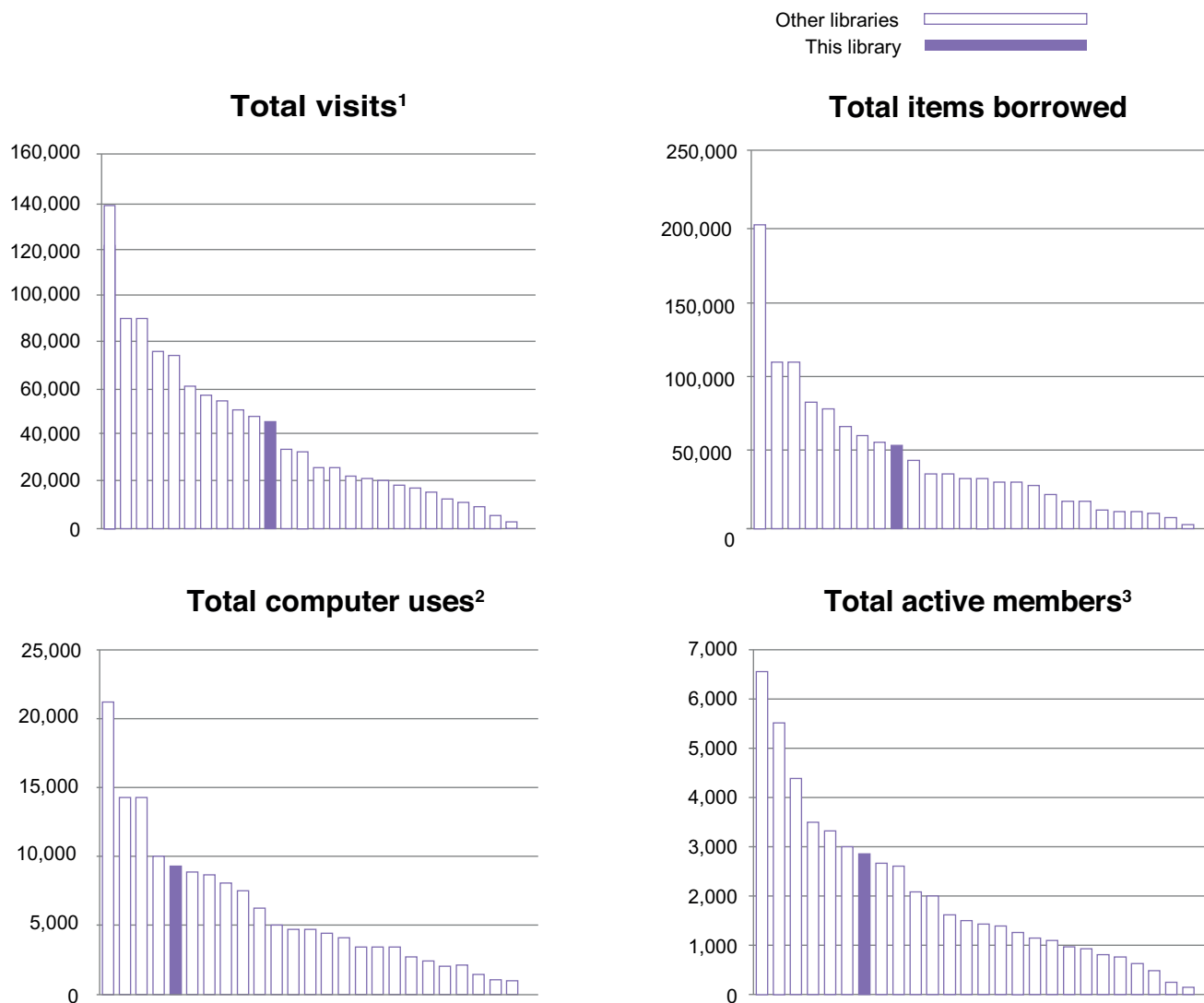
Visits <sup>1</sup>	44,647
Items borrowed	54,159
Computer uses <sup>2</sup>	9,193
Active membership <sup>3</sup> (at 31 March 2018)	2,767

## Indicative running costs of building<sup>4</sup>

£20,618

# St George Library

## Usage compared to other Bristol branch libraries<sup>5</sup> April 2017-March 2018



### Notes on usage figures, costs and charts

1. Visits = door count of visitors to the library via use of electronic door counter during the period.
2. Computer uses = number of computer bookings during the period.
3. Active members as of 31 March 2018. Active members are those who have issued, renewed, returned or reserved an item, or have booked a computer session in the past 12 months.
4. Running costs for the library building include rates, utilities, cleaning, waste management, rent, service charges, repairs and maintenance contracts and call outs, security alarms and security call outs. These figures do not include library staffing costs.
5. Usage charts do not include Central Library.
6. Extended Access libraries have technology installed that allows library members to use the library when no staff are present. There is a closed period of up to 15 minutes between staffed time and Extended Access time on Tuesday to Saturday.

# St George Library

## community conversation

**2017**

**What you said you liked...**

- Good location
- Community space / a social hub especially for people who are isolated, source of community information
- Free access to computers & the internet, especially for those who don't have access at home and job seekers
- Range of books for children & activities for children, families & schools

**What you didn't like...**

- Idea of closing any library

**Specific proposals and suggestions:**

- Expand Extended Access to more libraries
- Expand volunteering programme and/or have volunteers working alongside staff
- Community-run libraries
- Business sponsorship to fund the service / protect libraries
- Generate more income to fund the service / protect libraries e.g. café