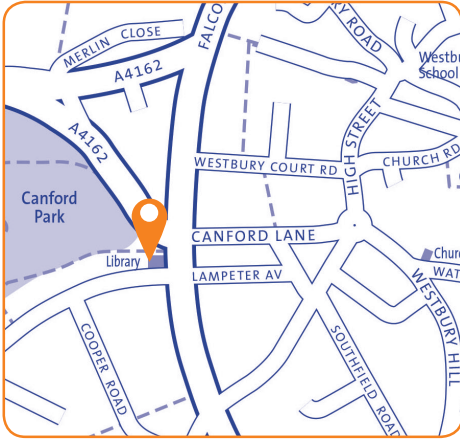


Westbury-on-Trym Library

Falcondale Road,
Bristol, BS9 3JZ
Tel: 0117 903 8552
Email: westbury.library@bristol.gov.uk



Ward:

Westbury-on-Trym and Henleaze

Transport links:

Good location, on busy main road and near shops. Bus stops close by on major routes.

Building condition:

Built in the 1970s, extended and fully refurbished in 2008. Some upgrading in 2016 for Extended Access facility.

Accessibility:

Ramped access into library.
No accessible toilet.

Opening hours:

Westbury is an Extended Access library⁶

Mon	08:00 – 19:00 (14:00 – 19:00 staffed)
Tue	08:00 – 19:00 (11:00 – 16:00 staffed)
Wed	08:00 – 19:00 (11:00 – 16:00 staffed)
Thurs	08:00 – 19:00 (11:00 – 16:00 staffed)
Fri	08:00 – 19:00 (11:00 – 16:00 staffed)
Sat	08:00 – 19:00 (11:00 – 16:00 staffed)
Sun	closed

Total hours open:

64.75 hours per week (30 hours staffed)

Number of public computers:

5

Self-service kiosks:

2

Usage figures (1 April 2017 – 31 March 2018)

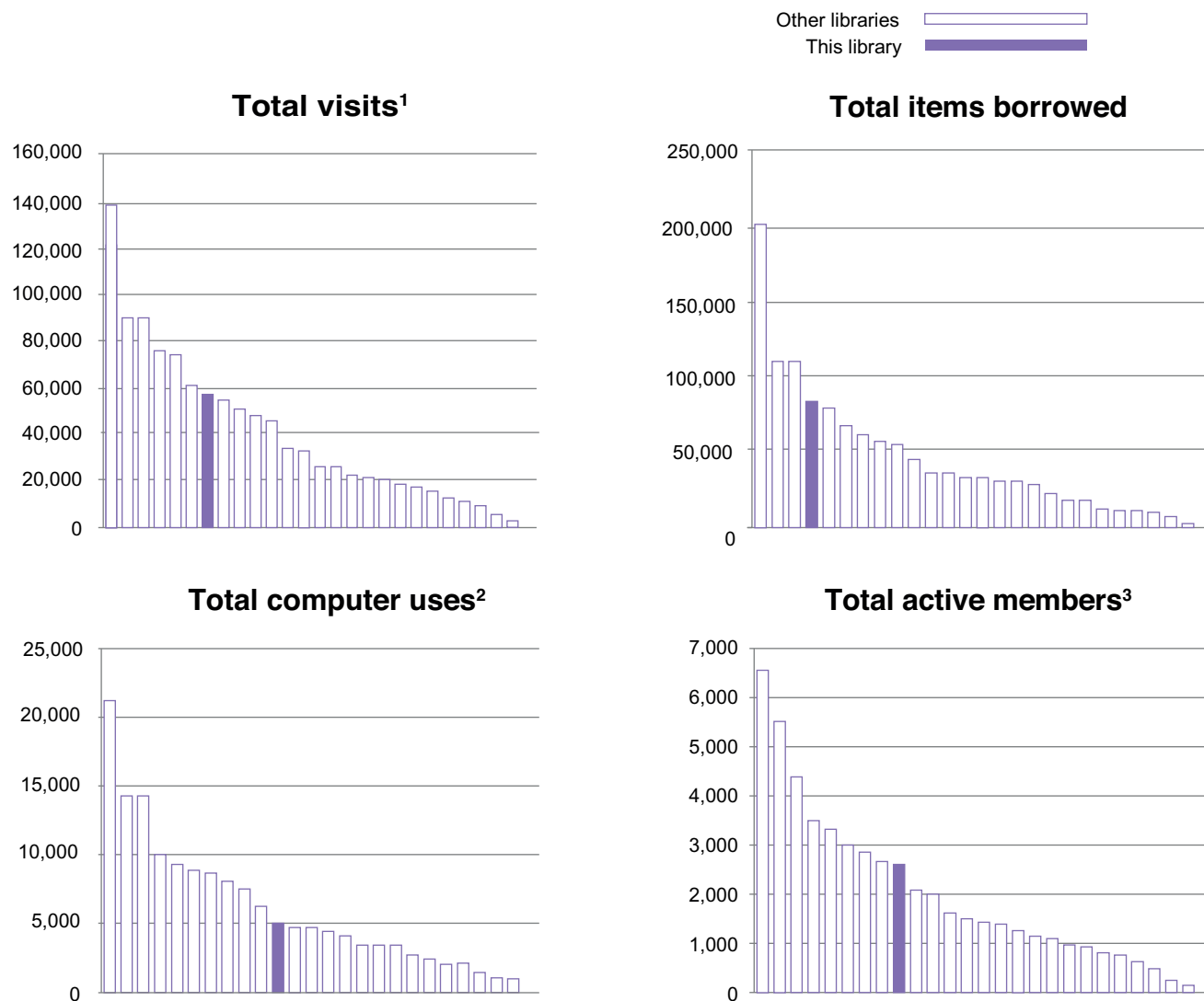
Visits ¹	57,549
Items borrowed	82,759
Computer uses ²	4,860
Active membership ³ (at 31 March 2018)	2,583

Indicative running costs of building⁴

£16,625

Westbury-on-Trym Library

Usage compared to other Bristol branch libraries⁵ *"April 2017-March 2018"*



Notes on usage figures, costs and charts

1. Visits = door count of visitors to the library via use of electronic door counter during the period.
2. Computer uses = number of computer bookings during the period.
3. Active members as of 31 March 2018. Active members are those who have issued, renewed, returned or reserved an item, or have booked a computer session in the past 12 months.
4. Running costs for the library building include rates, utilities, cleaning, waste management, rent, service charges, repairs and maintenance contracts and call outs, security alarms and security call outs. These figures do not include library staffing costs.
5. Usage charts do not include Central Library.
6. Extended Access libraries have technology installed that allows library members to use the library when no staff are present. There is a closed period of up to 15 minutes between staffed time and Extended Access time on Tuesday to Saturday.

Westbury Library

community conversation

2015

What you said you liked...

- Community space / a social hub especially for people who are isolated, source of community information
- Free access to computers & the internet, especially for those who don't have access at home and job seekers
- Friendly and helpful staff
- Range of books for children & activities for children, families & schools
- Quality of building

What you didn't like...

- Proposal to close this library

2017

What you said you liked...

- Good location
- Community space / a social hub especially for people who are isolated, source of community information
- Free access to computers & the internet, especially for those who don't have access at home and job seekers
- Friendly and helpful staff

What you didn't like...

- Proposal to close this library

Specific proposals and suggestions:

- Expand volunteering programme and/or have volunteers working alongside staff
- Generate more income to fund the service / protect libraries e.g. space hire, retail subletting, café, post office