

Knowle Library

1st Floor, Broadwalk Shopping Centre,
Wells Road, Bristol, BS4 2QU

Tel: 0117 903 8585

Email: knowle.library@bristol.gov.uk



Ward:

Knowle

Transport links:

On the main Wells Road, major transport route.
Bus stops close by.

Building condition:

Library opened in 2007 on upper floor. Long lease from Broadwalk Shopping Centre.
Good condition internally.

Accessibility:

Lifts available and accessed directly from car park. Accessible toilets in shopping centre.

Opening hours:

Mon 13:00 – 17:00
Tue 11:00 – 17:00
Wed *closed*
Thurs 11:00 – 19:00
Fri 11:00 – 17:00
Sat 10:00 – 17:00
Sun *closed*

Total hours open:

31 hours per week

Number of public computers:

10

Self-service kiosks:

2

Usage figures (1 April 2017 – 31 March 2018)

Visits ¹	75,449
Items borrowed	60,827
Computer uses ²	8,048
Active membership ³ (at 31 March 2018)	2,624

Indicative running costs of building⁴

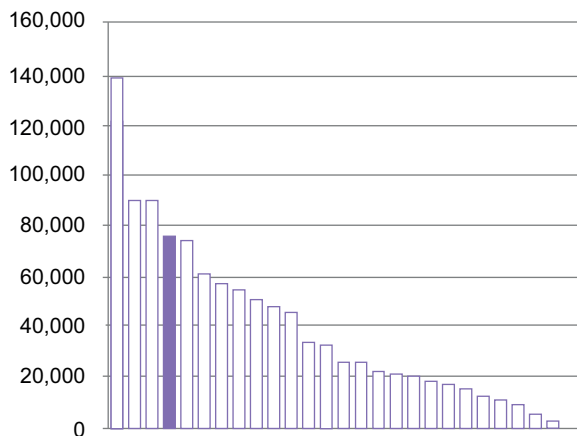
£65,300

Knowle Library

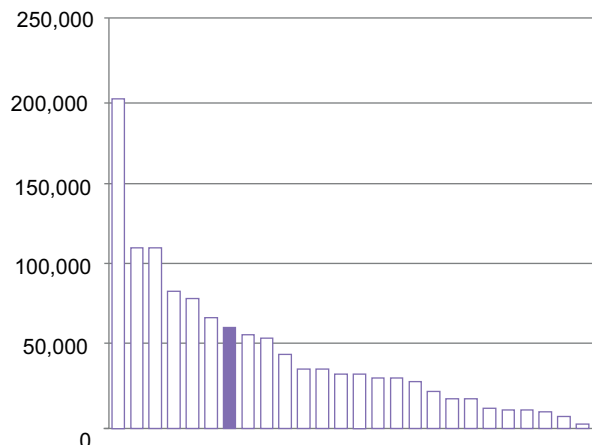
Usage compared to other Bristol branch libraries⁵ April 2017-March 2018

Other libraries 
This library 

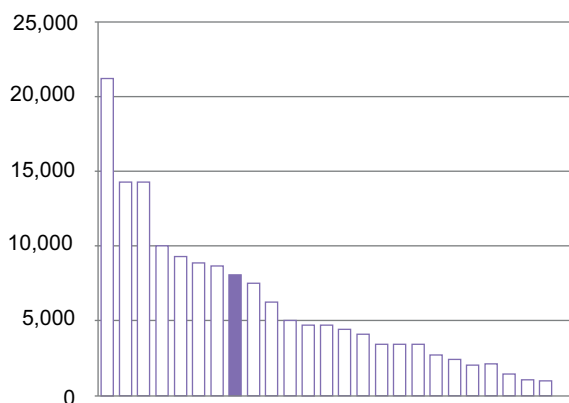
Total visits¹



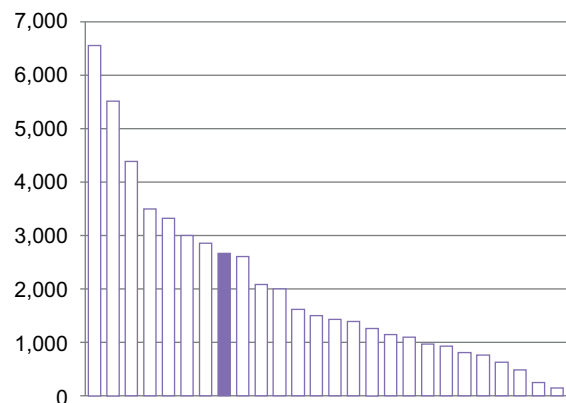
Total items borrowed



Total computer uses²



Total active members³



Notes on usage figures, costs and charts

1. Visits = door count of visitors to the library via use of electronic door counter during the period.
2. Computer uses = number of computer bookings during the period.
3. Active members as of 31 March 2018. Active members are those who have issued, renewed, returned or reserved an item, or have booked a computer session in the past 12 months.
4. Running costs for the library building include rates, utilities, cleaning, waste management, rent, service charges, repairs and maintenance contracts and call outs, security alarms and security call outs. These figures do not include library staffing costs.
5. Usage charts do not include Central Library.

Knowle Library

community conversation

2017

What you said you liked...

- Supporting literacy and learning for all
- Variety & quality of stock available
- Community space / a social hub especially for people who are isolated, source of community information
- Free access to computers & the internet, especially for those who don't have access at home and job seekers
- Range of books for children & activities for children, families & schools

What you didn't like...

- Idea of closing any library
- Proposal to close the library

Specific proposals and suggestions:

- Expand Extended Access to more libraries
- Generate more income to fund the service / protect libraries e.g. space hire, desk hire
- Expand volunteering programme and/or have volunteers working alongside staff
- Mobile or pop-up libraries
- Fundraising / donations / crowd-funding to fund the service / protect libraries
- Charge for computer use
- Reservation pick up points in the community or home delivery
- Share space in buildings with other services e.g. health centre, council services, supermarket, credit union
- Better marketing of the existing service