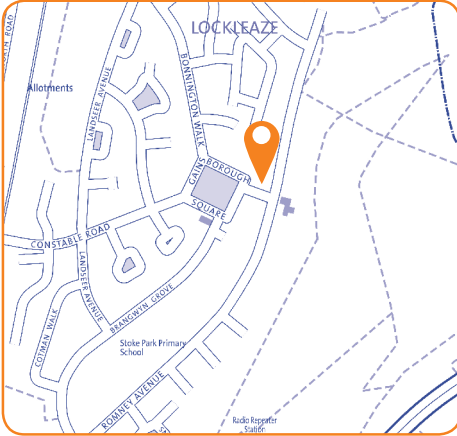


Lockleaze Library

The Cameron Centre, Cameron Walk,
Bristol, BS7 9XB

Tel: 07342 031 887

Email: lockleaze.library@bristol.gov.uk



Ward:

Lockleaze

Transport links:

Bus stops close, links to the centre of the city.
Small retail and community area.

Building condition:

Located in the Cameron Centre since June 2016. Building is in poor condition. Very small library located in one room, leased from Lockleaze Neighbourhood Trust.

Accessibility:

Entrance through the side door from pavement, it is a small space. Accessible toilet on site.

Opening hours:

Mon *closed*
Tue 11:00 – 16:00
Wed 11:00 – 16:00
Thurs 11:00 – 16:00
Fri *closed*
Sat 09:00 – 14:00
Sun *closed*

Total hours open:

20 hours per week

Number of public computers:

0

Usage figures (1 April 2017 – 31 March 2018)

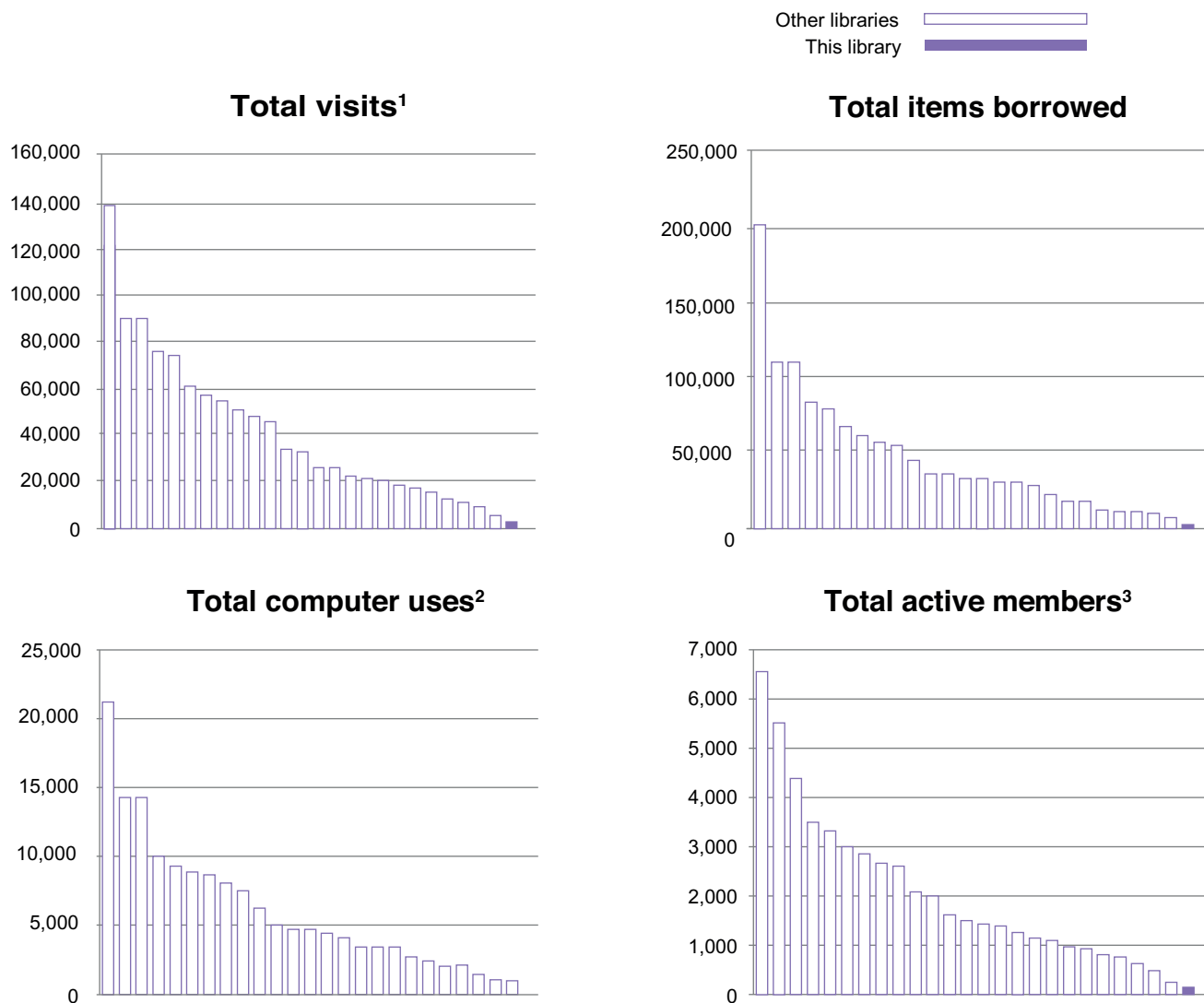
Visits ¹	2,238
Items borrowed	2,265
Computer uses ²	0
Active membership ³ (at 31 March 2018)	113

Indicative running costs of building⁴

£6,000

Lockleaze Library

Usage compared to other Bristol branch libraries⁵ April 2017-March 2018



Notes on usage figures, costs and charts

1. Visits = door count of visitors to the library during the period.
2. Computer uses = number of computer bookings during the period.
3. Active members as of 31 March 2018. Active members are those who have issued, renewed, returned or reserved an item, or have booked a computer session in the past 12 months.
4. Running costs for the library building include rates, utilities, cleaning, waste management, rent, service charges, repairs and maintenance contracts and call outs, security alarms and security call outs. These figures do not include library staffing costs.
5. Usage charts do not include Central Library.

Lockleaze Library

community conversation

2017

What you said you liked...

- Supporting literacy and learning for all
- Variety & quality of stock available
- Free access to computers & the internet, especially for those who don't have access at home and job seekers
- Range of books for children & activities for children, families & schools

What you didn't like...

- Idea of closing any library
- Proposal to close this library

Specific proposals and suggestions:

- Generate more income to fund the service / protect libraries e.g. space hire
- Expand volunteering programme and/or have volunteers working alongside staff
- Mobile or pop-up libraries
- Fundraising / donations / crowd-funding to fund the service / protect libraries
- Community-run libraries
- Share space in buildings with other services e.g. schools
- Better marketing of the existing service