

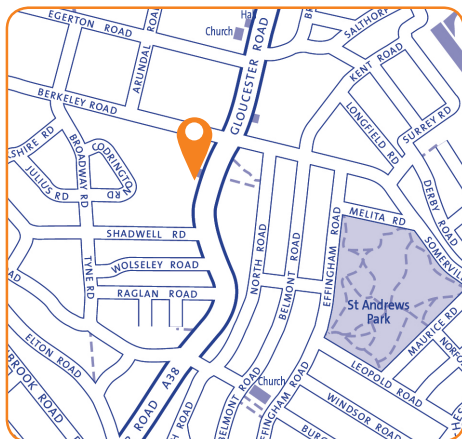
Bishopston Library

100A Gloucester Road,

Bristol, BS7 8BN

Tel: 0117 357 6220

Email: bishopston.library@bristol.gov.uk



Ward:

Redland

Transport links:

Located on main Gloucester Road. Bus stop directly outside.

Building condition:

New in 2017.

Accessibility:

On two floors, lift available. Accessible toilet on the ground floor of the library. Access directly from the street.

Opening hours:

Mon 13:00 – 19:00

Tue *closed*

Wed 11:00 – 17:00

Thurs 11:00 – 17:00

Fri 11:00 – 17:00

Sat 11:00 – 17:00

Sun *closed*

Total hours open:

30 hours per week

Number of public computers:

10

Self-service kiosks:

3

Usage figures (1 April 2017 – 31 March 2018)

| | |
|--|---------|
| Visits ¹ | 90,082 |
| Items borrowed | 108,795 |
| Computer uses ² | 8,614 |
| Active membership ³ (at 31 March 2018) | 4,374 |

Indicative running costs of building⁴

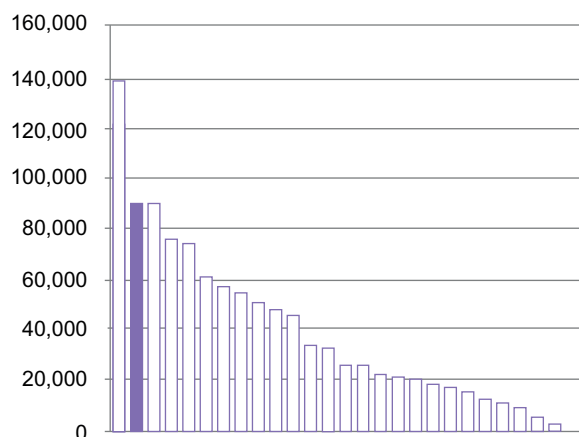
£49,411

Bishopston Library

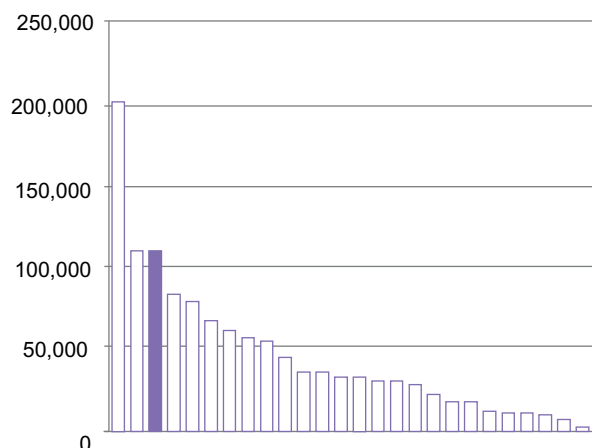
Usage compared to other Bristol branch libraries⁵ April 2017 – March 2018

Other libraries 
This library 

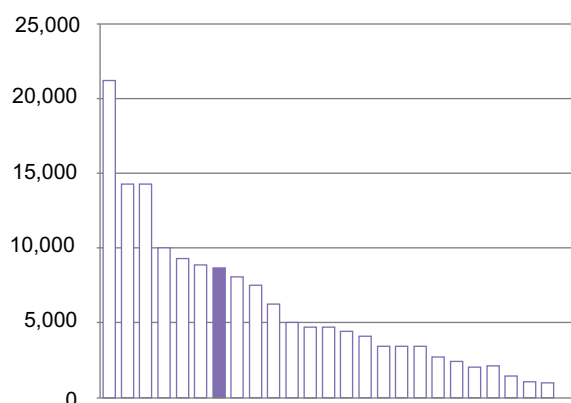
Total visits¹



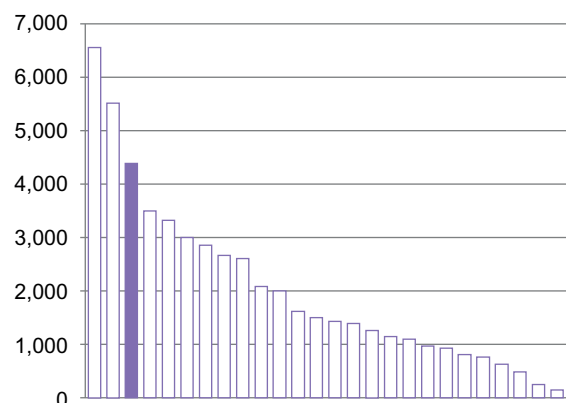
Total items borrowed



Total computer uses²



Total active members³



Notes on usage figures, costs and charts

1. Visits = door count of visitors to the library via use of electronic door counter during the period.
2. Computer uses = number of computer bookings during the period.
3. Active members as of 31 March 2018. Active members are those who have issued, renewed, returned or reserved an item, or have booked a computer session in the past 12 months.
4. Running costs for the library building include rates, utilities, cleaning, waste management, rent, service charges, repairs and maintenance contracts and call outs, security alarms and security call outs. These figures do not include library staffing costs.
5. Usage charts do not include Central Library.

Bishopston Library

community conversation

2017

What you said you liked...

- Supporting literacy and learning for all
- Variety & quality of stock available
- Good location
- Community space / a social hub especially for people who are isolated, source of community information
- Free access to computers & the internet, especially for those who don't have access at home and job seekers
- Friendly and helpful staff
- Range of books for children & activities for children, families & schools
- Quality of building

2017

What you didn't like...

- Idea of closing any library
- Proposal to close this library

Specific proposals and suggestions:

- Expand Extended Access to more libraries
- Partnership with the universities - to deliver services, share space in buildings and/or fund public libraries
- Generate more income to fund the service / protect libraries e.g. space hire
- Expand volunteering programme and/or have volunteers working alongside staff
- Fundraising / donations / crowd-funding to fund the service / protect libraries
- Charge for computer use
- Reservation pick-up points in the community or home delivery
- Community-run libraries
- Business sponsorship to fund the service / protect libraries