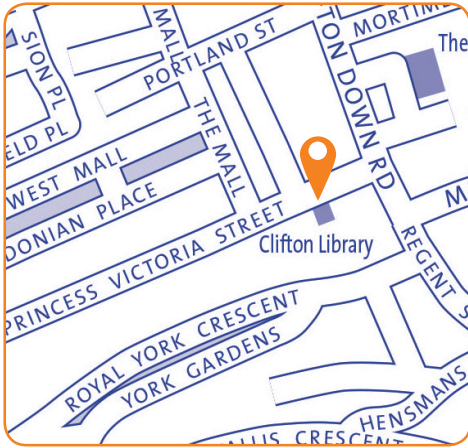


Clifton Library

Princess Victoria Street,
Bristol, BS8 4BX
Tel: 0117 903 8572
Email: clifton.library@bristol.gov.uk



Ward:

Clifton

Transport links:

1 mile from Central Library. Good bus links.
Located close to shops and other facilities.

Building condition:

Built in 1870s, listed status. Fully refurbished in 2010 but still subject to building issues due to age and design.

Accessibility:

Lift to first floor public meeting room available.
Accessible toilet.

Opening hours:

Mon 10:00 – 14:00
Tue 13:00 – 17:00
Wed *closed*
Thurs 13:00 – 17:00
Fri 10:00 – 14:00
Sat 13:00 – 17:00
Sun *closed*

Total hours open:

20 hours per week

Number of public computers:

5

Self-service kiosks:

1

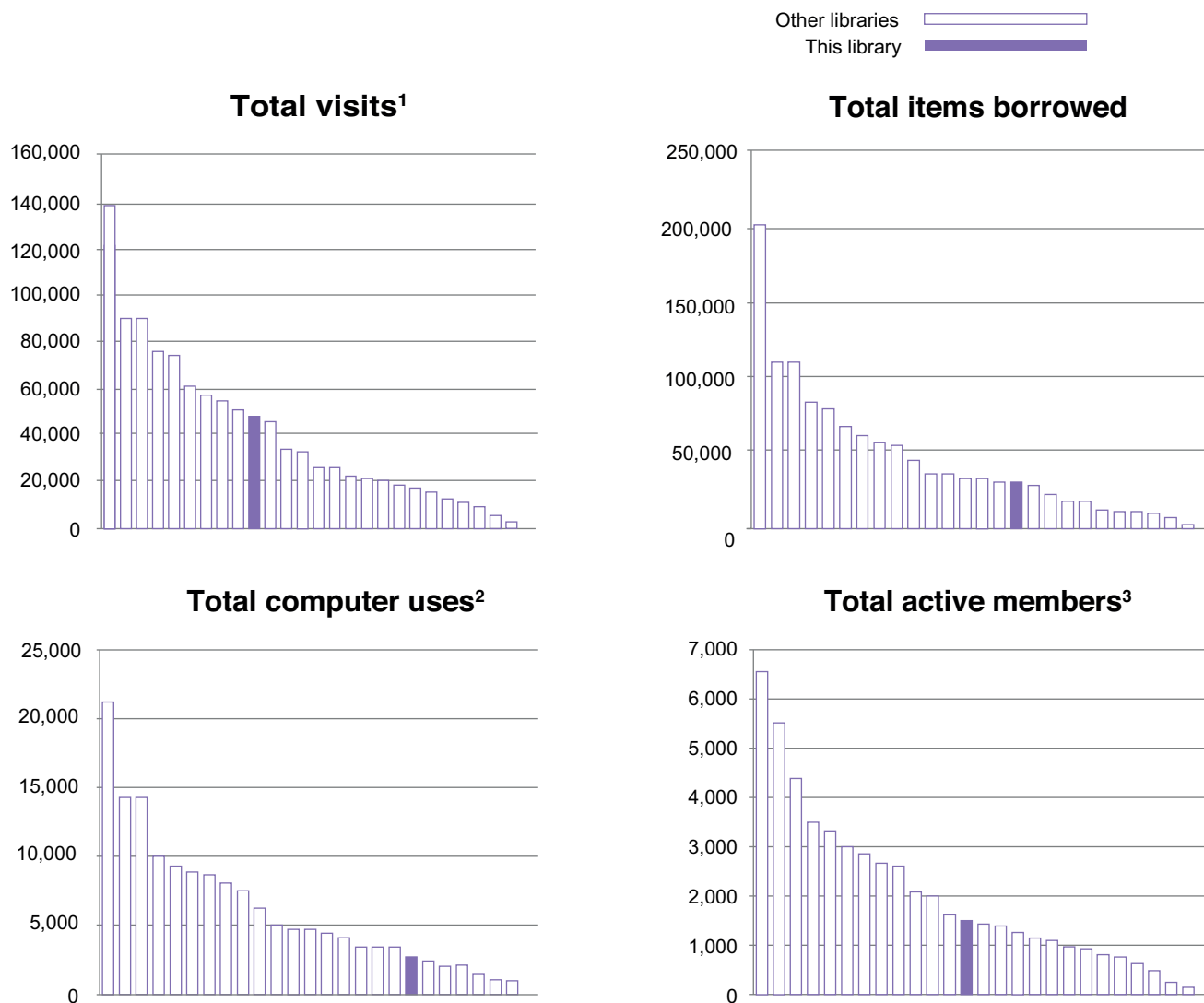
Usage figures (1 April 2017 – 31 March 2018)

Visits ¹	47,882
Items borrowed	29,105
Computer uses ²	2,535
Active membership ³ <small>(at 31 March 2018)</small>	1,461

Indicative running costs of building⁴

£24,021

Usage compared to other Bristol branch libraries⁵ April 2017-March 2018



Notes on usage figures, costs and charts

1. Visits = door count of visitors to the library via use of electronic door counter during the period.
2. Computer uses = number of computer bookings during the period.
3. Active members as of 31 March 2018. Active members are those who have issued, renewed, returned or reserved an item, or have booked a computer session in the past 12 months.
4. Running costs for the library building include rates, utilities, cleaning, waste management, rent, service charges, repairs and maintenance contracts and call outs, security alarms and security call outs. These figures do not include library staffing costs.
5. Usage charts do not include Central Library.

Clifton Library

community conversation

2015

What you said you liked...

- Good community space in refurbished building
- Quality of building
- Good facilities and staff

What you didn't like...

- Proposal to close this library

Specific proposals and suggestions:

- Expand Extended Access to more libraries
- Partnership with the universities - to deliver services, share space in buildings and/or fund public libraries
- Offer adult learning / courses
- Generate more income to fund the service / protect libraries e.g. space hire, retail subletting
- Expand volunteering programme and/or have volunteers working alongside staff
- Mobile or pop-up libraries
- Fundraising / donations / crowd-funding to fund the service / protect libraries
- Charge for computer use
- Business sponsorship to fund the service / protect libraries

2017

What you said you liked...

- Cultural events
- Supporting literacy and learning for all
- Variety & quality of stock available
- Good location
- Community space / a social hub especially for people who are isolated, source of community information
- Free access to computers & the internet, especially for those who don't have access at home and job seekers
- Friendly and helpful staff
- Range of books for children & activities for children, families & schools

What you didn't like...

- Quality of building
- Idea of closing any library
- Proposal to close this library