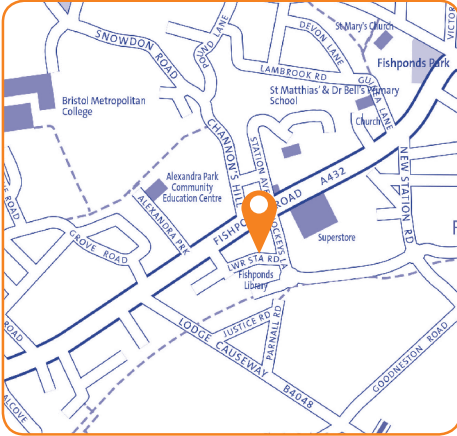


Fishponds Library

Robinson House, Hockeys Lane
Bristol, BS16 3HL
Tel: 0117 903 8560
Email: fishponds.library@bristol.gov.uk



Ward:

Eastville

Transport links:

Located just off main Fishponds Road. Bus stops close by. Adjacent to supermarkets.

Building condition:

Located in Robinson House. New library location from 2012, shared space with Citizen Service Point until March 2017. Other BCC services are located in offices upstairs. Building needs some updating.

Accessibility:

Fully accessible public space. Public accessible toilet.

Opening hours:

Mon 10:00 – 17:00
Tue 10:00 – 17:00
Wed *closed*
Thurs 11:00 – 19:00
Fri 10:00 – 17:00
Sat 10:00 – 17:00
Sun *closed*

Total hours open:

36 hours per week

Number of public computers:

6

Self-service kiosks:

2

Usage figures (1 April 2017 – 31 March 2018)

Visits ¹	54,223
Items borrowed	66,074
Computer uses ²	8,757
Active membership ³ (at 31 March 2018)	2,978

Indicative running costs of building⁴

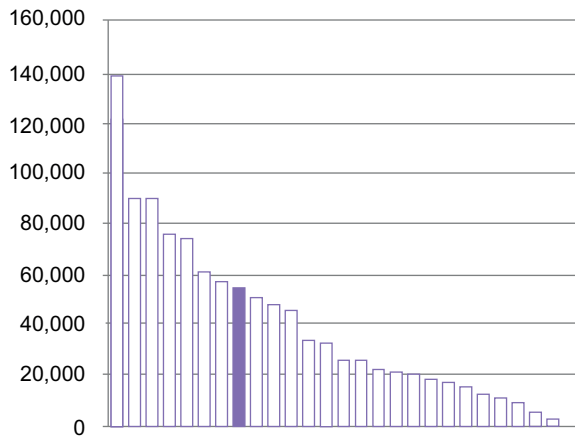
£1,798

Fishponds Library

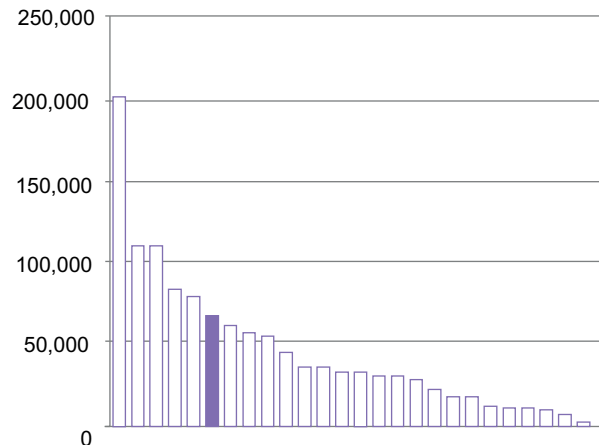
Usage compared to other Bristol branch libraries⁵ April 2017-March 2018

Other libraries 
This library 

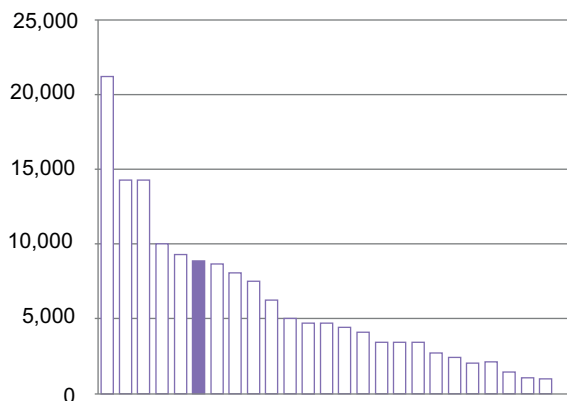
Total visits¹



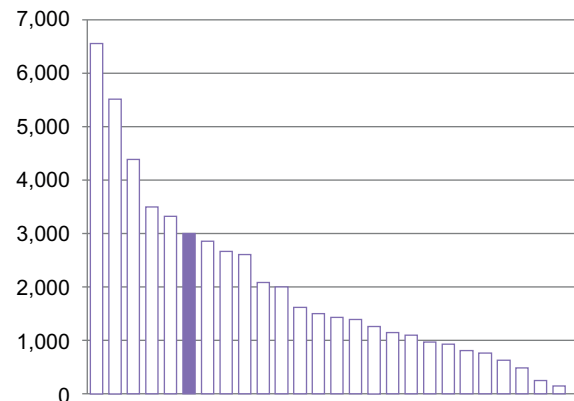
Total items borrowed



Total computer uses²



Total active members³



Notes on usage figures, costs and charts

1. Visits = door count of visitors to the library via use of electronic door counter during the period.
2. Computer uses = number of computer bookings during the period.
3. Active members as of 31 March 2018. Active members are those who have issued, renewed, returned or reserved an item, or have booked a computer session in the past 12 months.
4. Running costs for the library building include rates, utilities, cleaning, waste management, rent, service charges, repairs and maintenance contracts and call outs, security alarms and security call outs. These figures do not include library staffing costs.
5. Usage charts do not include Central Library.

Fishponds Library

community conversation

2017

What you said you liked...

- Supporting literacy and learning for all
- Variety & quality of stock available
- Good location
- Community space / a social hub especially for people who are isolated, source of community information
- Free access to computers & the internet, especially for those who don't have access at home and job seekers
- Range of books for children & activities for children, families & schools

What you didn't like...

- Idea of closing any library
- Proposal to close this library

Specific proposals and suggestions:

- Expand Extended Access to more libraries
- Generate more income to fund the service / protect libraries e.g. café, space hire, desk hire
- Expand volunteering programme and/or have volunteers working alongside staff
- Reservation pick up points in the community or home delivery