

Hartcliffe Library

Symes District Centre,
Peterson Avenue, Bristol, BS13 0BE
Tel: 0117 903 8568
Email: hartcliffe.library@bristol.gov.uk



Ward:

Hartcliffe and Withywood

Transport links:

Located near supermarket. Bus stops close by.

Building condition:

Library space leased from Hartcliffe and Withywood Community Partnership in @Symes building. New in 2007, good sized space, not ideal location within the building.

Accessibility:

Fully accessible with accessible toilet available.

Opening hours:

Mon 13:00 – 17:00
Tue *closed*
Wed 10:00 – 14:00
Thurs 13:00 – 17:00
Fri 13:00 – 17:00
Sat 11:00 – 17:00
Sun *closed*

Total hours open:

22 hours per week

Number of public computers:

7

Self-service kiosks:

1

Usage figures 1 April 2017 – 31 March 2018

Visits ¹	10,275
Items borrowed	9,447
Computer uses ²	3,353
Active membership ³ <small>(at 31 March 2018)</small>	734

Indicative running costs of building⁴

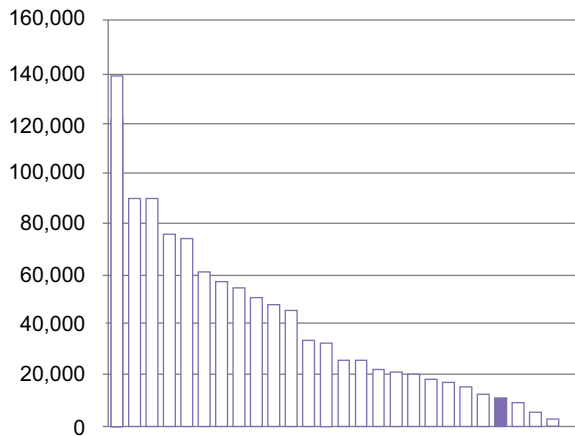
£43,475

Hartcliffe Library

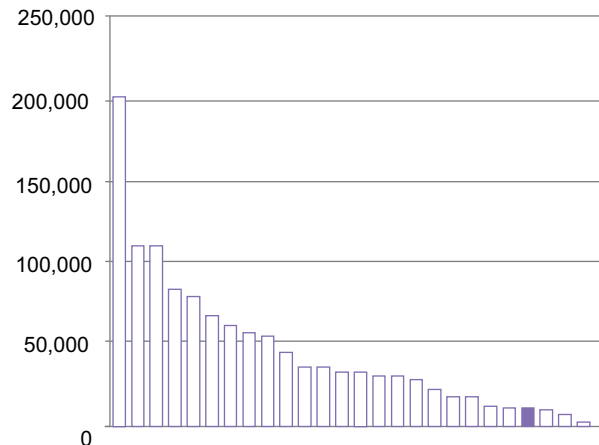
Usage compared to other Bristol branch libraries⁵ April 2017-March 2018

Other libraries 
This library 

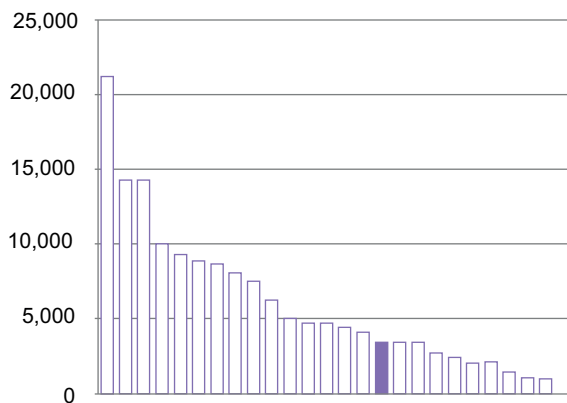
Total visits¹



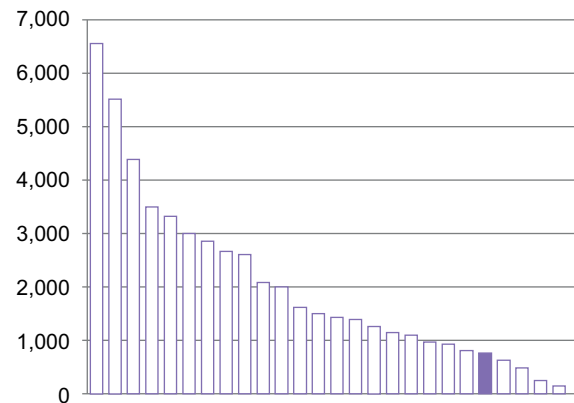
Total items borrowed



Total computer uses²



Total active members³



Notes on usage figures, costs and charts

1. Visits = door count of visitors to the library during the period.
2. Computer uses = number of computer bookings during the period.
3. Active members as of 31 March 2018. Active members are those who have issued, renewed, returned or reserved an item, or have booked a computer session in the past 12 months.
4. Running costs for the library building include rates, utilities, cleaning, waste management, rent, service charges, repairs and maintenance contracts and call outs, security alarms and security call outs. These figures do not include library staffing costs.
5. Usage charts do not include Central Library.

Hartcliffe Library

community conversation

2017

What you said you liked...

- Community space / a social hub especially for people who are isolated, source of community information
- Free access to computers & the internet, especially for those who don't have access at home and job seekers

What you didn't like...

- Idea of closing any library
- Reduced opening hours

Specific proposals and suggestions:

- Community-run libraries
- Generate more income to fund the service / protect libraries e.g. café, bookshop