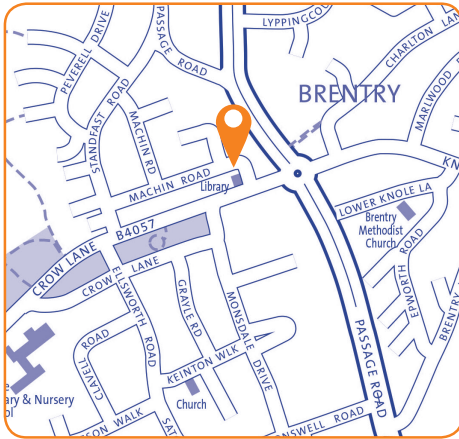


Henbury Library

Crow Lane,
Bristol, BS10 7DR
Tel: 0117 903 8522
Email: henbury.library@bristol.gov.uk



Ward:

Henbury and Brentry

Transport links:

Library located on main road adjacent to local shops. Bus stops close by on main bus routes.

Building condition:

Built in the 1970s. Reasonable condition internally but external appearance dated. Last total refurbishment was in 2007.

Accessibility:

Good access inside and accessible public toilet.

Opening hours:

Mon	11:00 – 17:00
Tue	<i>closed</i>
Wed	11:00 – 19:00
Thurs	<i>closed</i>
Fri	11:00 – 17:00
Sat	11:00 – 17:00
Sun	<i>closed</i>

Total hours open:

26 hours per week

Number of public computers:

11

Self-service kiosks:

1

Usage figures (1 April 2017 – 31 March 2018)

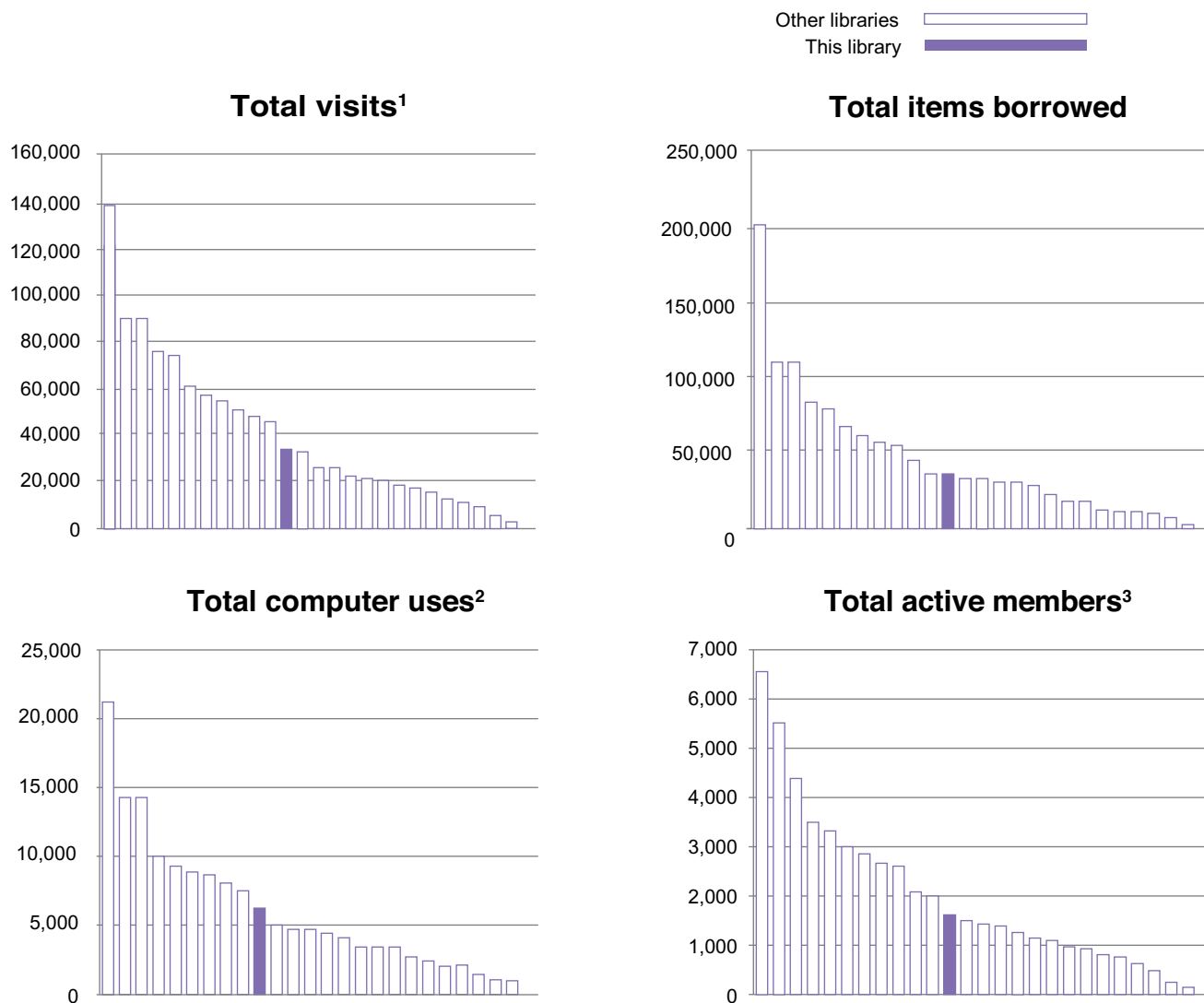
Visits ¹	34,162
Items borrowed	36,051
Computer use ²	6,184
Active membership ³ (at 31 March 2018)	1,612

Indicative running costs of building⁴

£24,641

Henbury Library

Usage compared to other Bristol branch libraries⁵ April 2017-March 2018



Notes on usage figures, costs and charts

1. Visits = door count of visitors to the library via use of electronic door counter during the period.
2. Computer uses = number of computer bookings during the period.
3. Active members as of 31 March 2018. Active members are those who have issued, renewed, returned or reserved an item, or have booked a computer session in the past 12 months.
4. Running costs for the library building include rates, utilities, cleaning, waste management, rent, service charges, repairs and maintenance contracts and call outs, security alarms and security call outs. These figures do not include library staffing costs.
5. Usage charts do not include Central Library.

Henbury Library

community conversation

2017

What you said you liked...

- Supporting literacy and learning for all
- Variety & quality of stock available
- Advice sessions / surgeries
- Community space / a social hub especially for people who are isolated, source of community information
- Free access to computers & the internet, especially for those who don't have access at home and job seekers
- Friendly and helpful staff
- Range of books for children & activities for children, families & schools

2017

What you didn't like...

- Idea of closing any library
- Proposal to close this library
- Reduced opening hours

Specific proposals and suggestions:

- Expand volunteering programme and/or have volunteers working alongside staff
- Share space in buildings with other services e.g. advice centre, leisure centre