

Horfield Library

Filton Avenue,
Bristol, BS7 0BD

Tel: 0117 903 8538

Email: horfield.library@bristol.gov.uk



Ward:

Lockleaze

Transport links:

Located on main road opposite row of shops.
Bus stop nearby.

Building condition:

Built in 1930s, traditional appearance. Would need major investment to bring it up to good condition. Age and design of the library limits flexibility for change.

Accessibility:

Ramped access into library. No accessible toilet.

Opening hours:

Mon 11:00 – 17:00
Tue 11:00 – 17:00
Wed *closed*
Thurs 10:00 – 17:00
Fri *closed*
Sat 10:00 – 17:00
Sun *closed*

Total hours open:

26 hours per week

Number of public computers:

6

Self-service kiosks:

1

Usage figures (1 April 2017 – 31 March 2018)

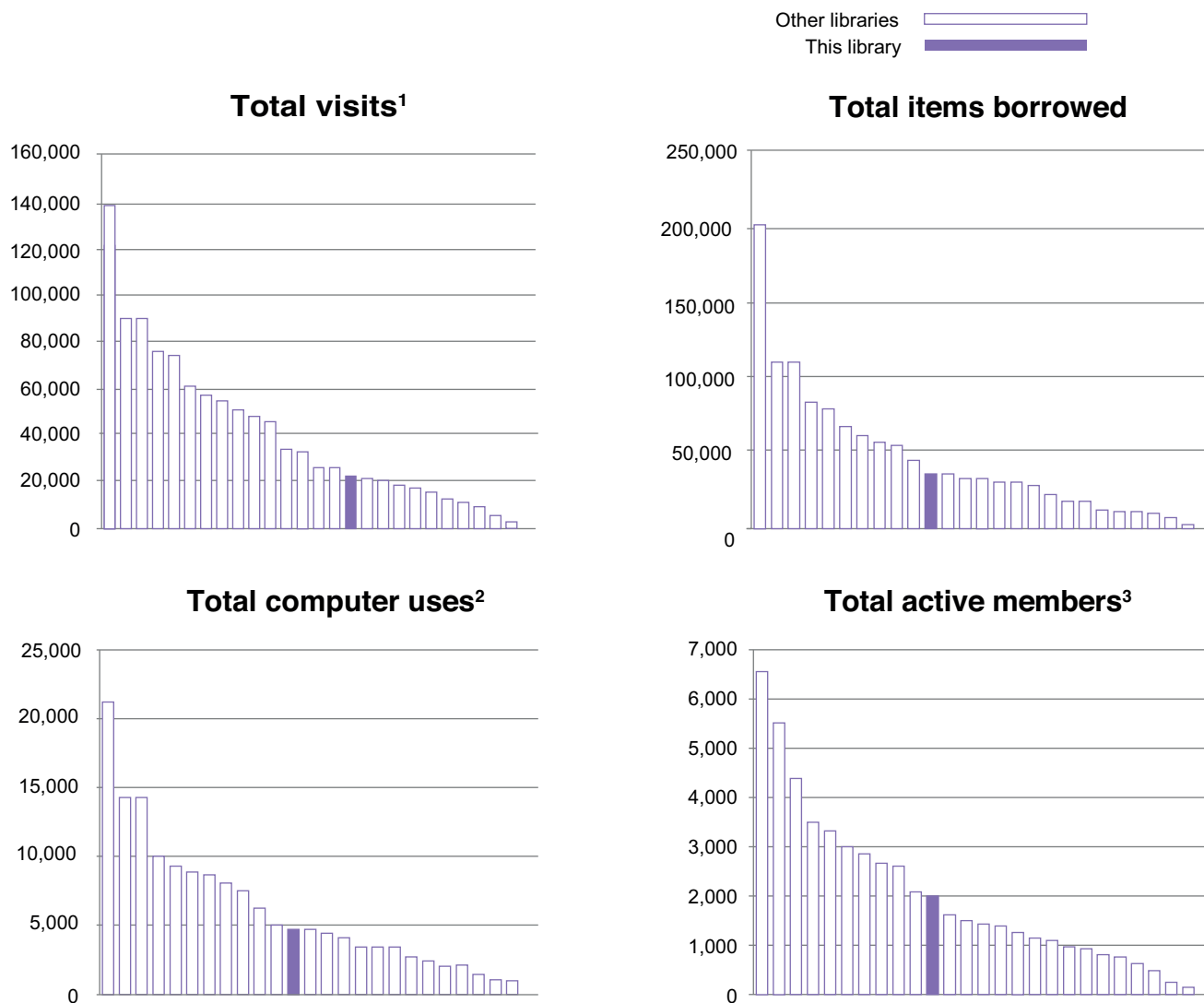
Visits ¹	22,285
Items borrowed	36,989
Computer uses ²	4,630
Active membership ³ (at 31 March 2018)	1,965

Indicative running costs of building⁴

£13,644

Horfield Library

Usage compared to other Bristol branch libraries⁵ April 2017-March 2018



Notes on usage figures, costs and charts

1. Visits = door count of visitors to the library via use of electronic door counter during the period.
2. Computer uses = number of computer bookings during the period.
3. Active members as of 31 March 2018. Active members are those who have issued, renewed, returned or reserved an item, or have booked a computer session in the past 12 months.
4. Running costs for the library building include rates, utilities, cleaning, waste management, rent, service charges, repairs and maintenance contracts and call outs, security alarms and security call outs. These figures do not include library staffing costs.
5. Usage charts do not include Central Library.

Horfield Library

community conversation

2017

What you said you liked...

- Supporting literacy and learning for all
- Variety & quality of stock available
- Good location
- Community space / a social hub especially for people who are isolated, source of community information
- Free access to computers & the internet, especially for those who don't have access at home and job seekers
- Range of books for children & activities for children, families & schools

2017

What you didn't like...

- Idea of closing any library
- Proposal to close this library

Specific proposals and suggestions:

- Expand Extended Access to more libraries
- Generate more income to fund the service / protect libraries e.g. café
- Expand volunteering programme and/or have volunteers working alongside staff
- Mobile or pop-up libraries
- Fundraising / donations / crowd-funding to fund the service / protect libraries
- Community-run libraries
- Business sponsorship to fund the service / protect libraries