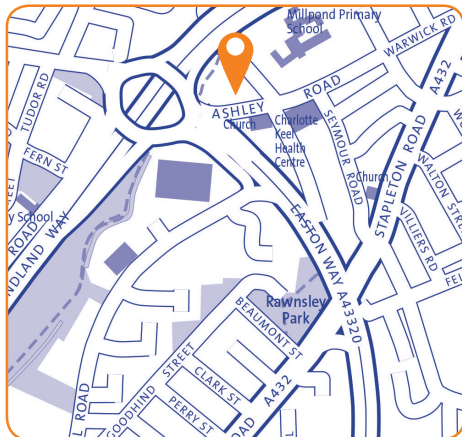


# Junction 3 Library

Baptist Mills Court, Easton,  
Bristol, BS5 0FJ  
Tel: 0117 922 3001  
Email: junction3@bristol.gov.uk



## Ward:

Lawrence Hill

## Transport links:

Adjacent to M32. Close to primary school and health centre. Main bus stops 5 minutes' walk.

## Building condition:

New library opened 2013, leased from Knightstone Housing. Library on ground floor. Community space for rent on first floor plus leased space to Barnardos on 2nd floor. Good condition. Highly visible.

## Accessibility:

Lift to upper floors. Accessible toilets available.

## Opening hours:

Mon 13:00 – 19:00  
Tue 11:00 – 17:00  
Wed 13:00 – 19:00  
Thurs *closed*  
Fri 11:00 – 17:00  
Sat 10:00 – 17:00  
Sun *closed*

## Total hours open:

31 hours per week

## Number of public computers:

12

## Self-service kiosks:

2

## Usage figures (1 April 2017 – 31 March 2018)

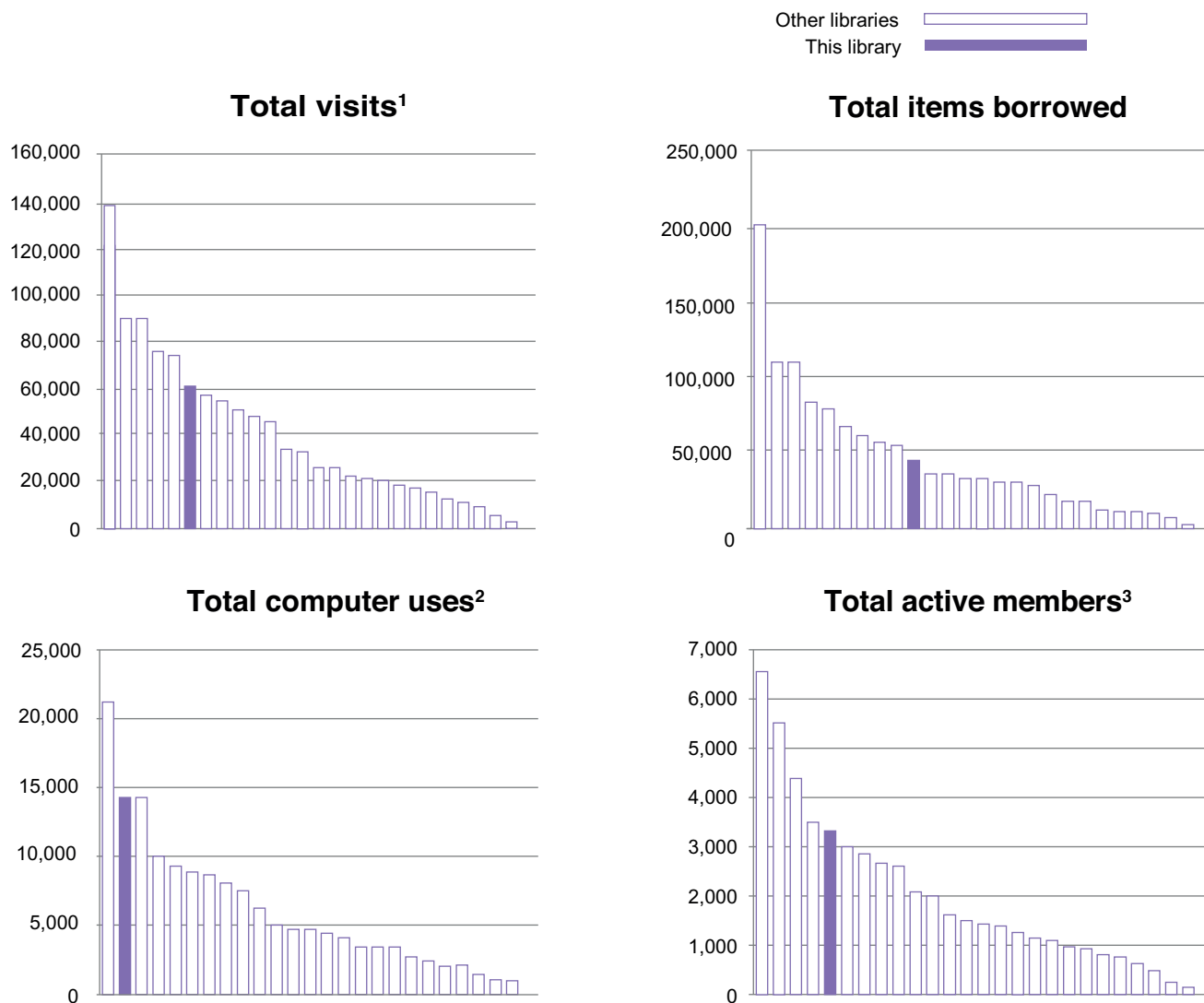
Visits <sup>1</sup>	61,059
Items borrowed	44,795
Computer uses <sup>2</sup>	14,118
Active membership <sup>3</sup> (at 31 March 2018)	3,312

## Indicative running costs of building<sup>4</sup>

£106,343

# Junction 3 Library

## Usage compared to other Bristol branch libraries<sup>5</sup> April 2017-March 2018



### Notes on usage figures, costs and charts

1. Visits = door count of visitors to the library via use of electronic door counter during the period.
2. Computer uses = number of computer bookings during the period.
3. Active members as of 31 March 2018. Active members are those who have issued, renewed, returned or reserved an item, or have booked a computer session in the past 12 months.
4. Running costs for the library building include rates, utilities, cleaning, waste management, rent, service charges, repairs and maintenance contracts and call outs, security alarms and security call outs. These figures do not include library staffing costs.
5. Usage charts do not include Central Library.

# Junction 3 Library

## community conversation

### 2015

#### What you said you liked...

- Good staff
- Quality of building: new, large and pleasant

### 2017

#### What you said you liked...

- Supporting literacy and learning for all
- Variety & quality of stock available
- Community space / a social hub especially for people who are isolated, source of community information
- Free access to computers & the internet, especially for those who don't have access at home and job seekers
- Range of books for children & activities for children, families & schools

#### What you didn't like...

- Idea of closing any library
- Poor location

#### Specific proposals and suggestions:

- Expand Extended Access to more libraries
- Partnership with the universities - to deliver services, share space in buildings and/or fund public libraries
- Generate more income to fund the service / protect libraries e.g. space hire, retail subletting
- Expand volunteering programme and/or have volunteers working alongside staff
- Mobile or pop-up libraries
- Fundraising / donations / crowd-funding to fund the service / protect libraries
- Charge for computer use
- Share space in buildings with other services e.g. community centre, leisure centre, post office
- Better marketing of the existing service