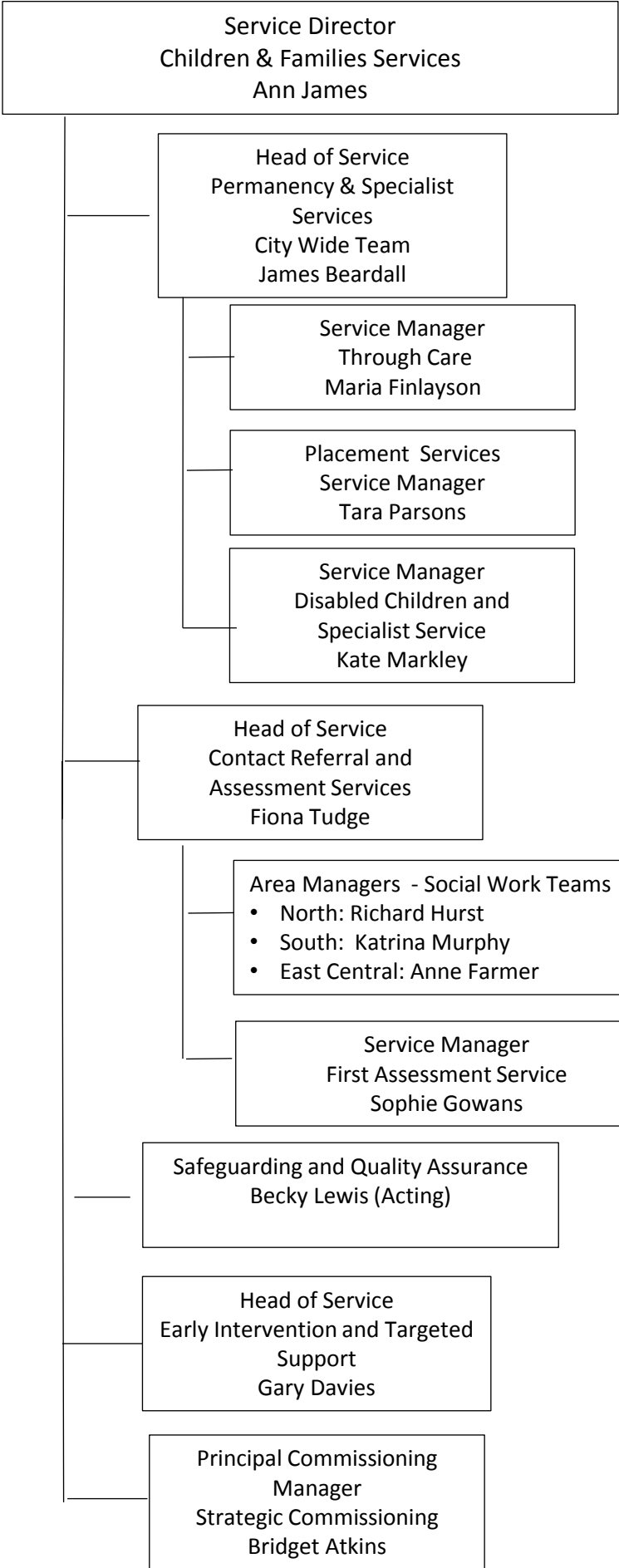


Care and Support Childrens and Families Structure Charts



2nd and 3rd Tier Officers



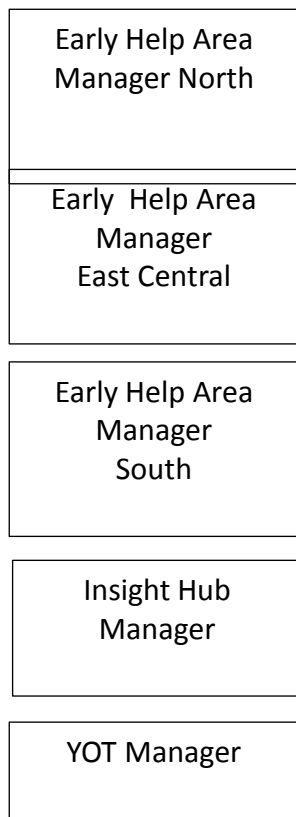
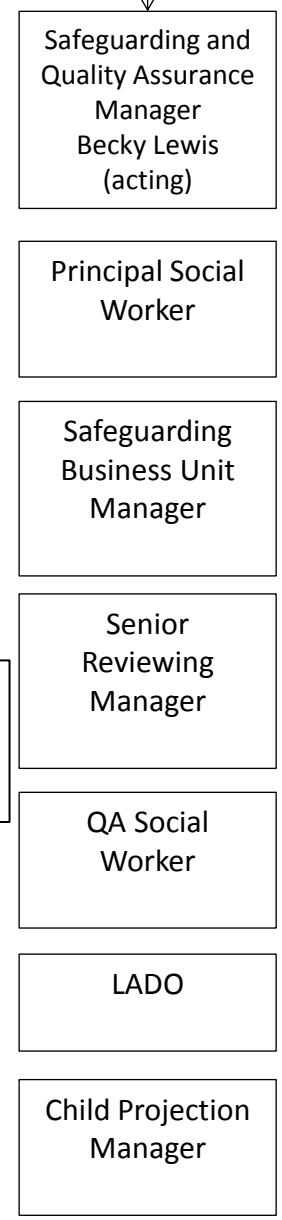
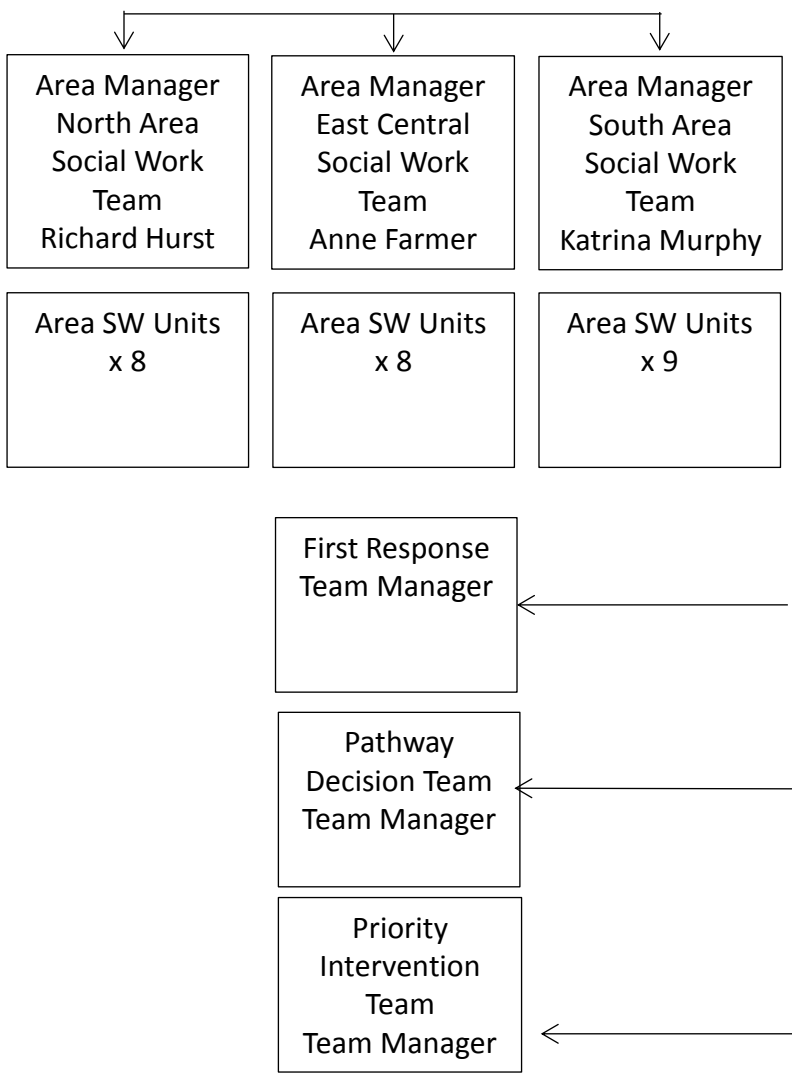
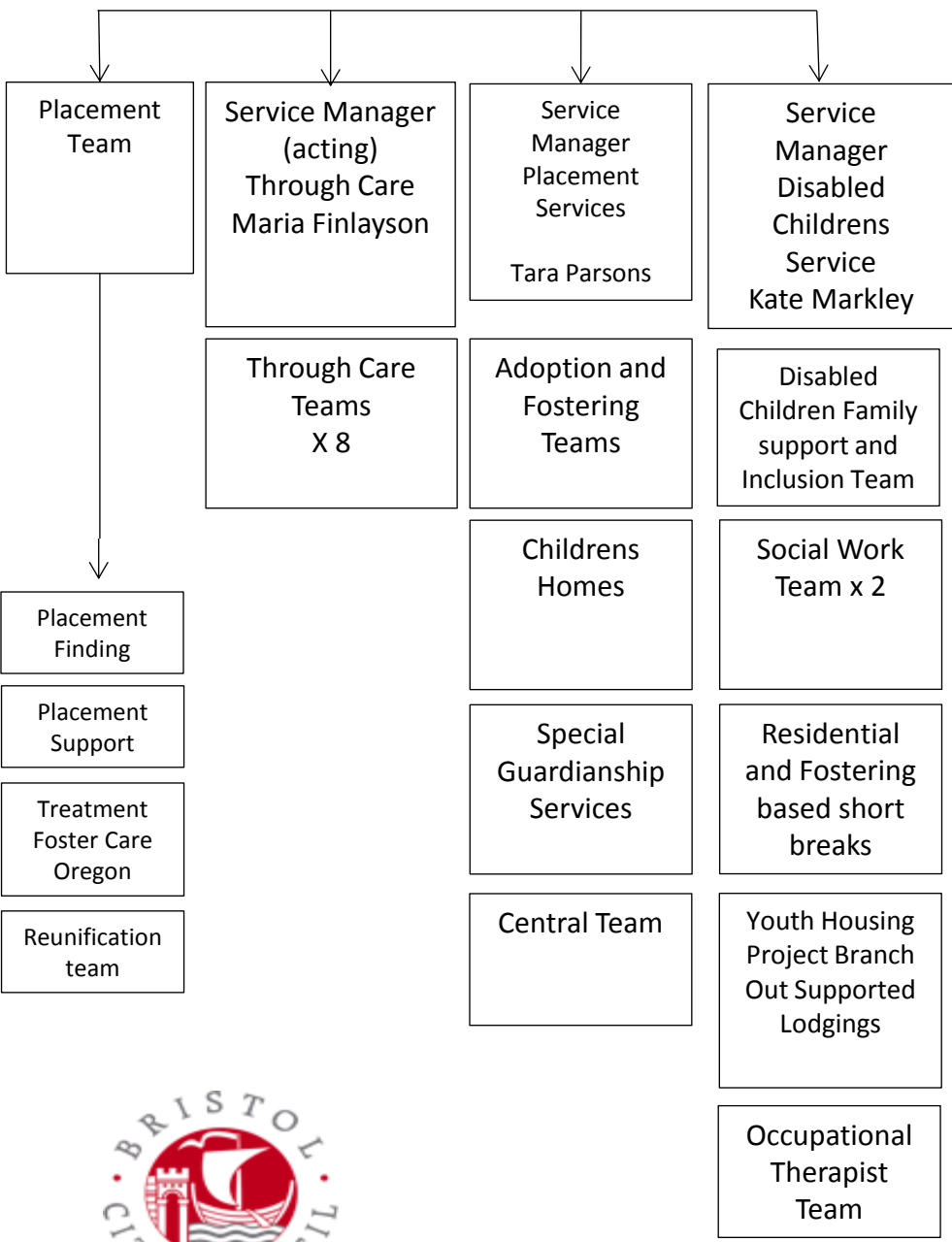
Overview of teams

Service Director, (acting)
Children & Families
Ann James
07795 091330 – Based in City Hall

Head of Service (acting)
Permanency & Specialist Services
James Beardall

Head of Service
Contact Referral and
Assessment Services
Fiona Tudge

Head of Service
Early Intervention
and Targeted
Support
Gary Davies



Service Manager First Assessment Service (Sophie Gowans)

