



STANDARD DETAILS

02-KERBS KERBS 1

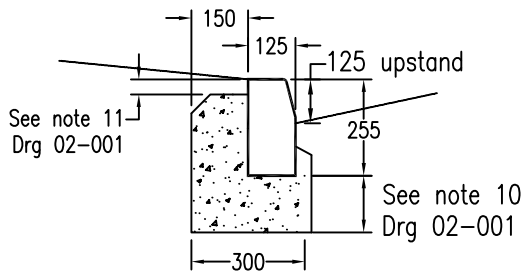
DRAWING NUMBER

Drawing **SD 02-002** Revision **G**

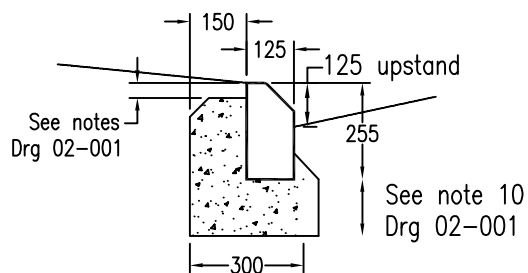
Drawn by
RB

Scale
1:20

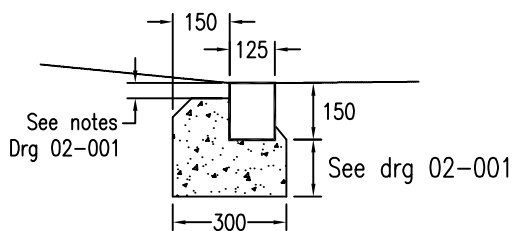
Date Drawn
OCT 2016



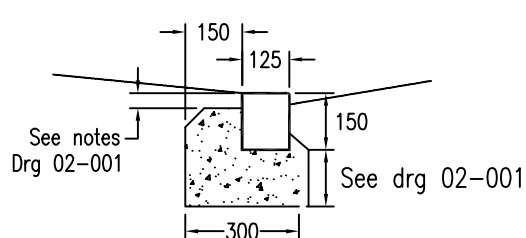
HALF BATTER KERB
Kerb BS EN 1340: Type HB2/HB1



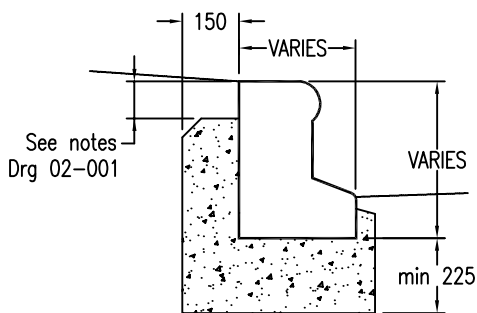
FULL BATTER KERB
Kerb BS EN 1340: Type SP



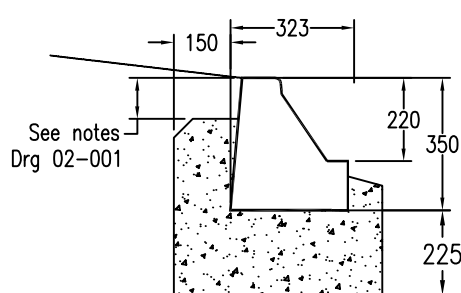
FLUSH KERB (0-6mm upstand)
Channel used as kerb BS EN 1340: Type CS2/BN



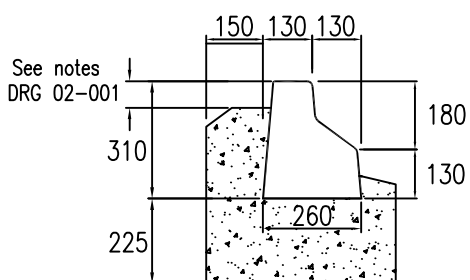
BULL NOSED KERB (25mm upstand)
Kerb BS EN 1340: Type BN



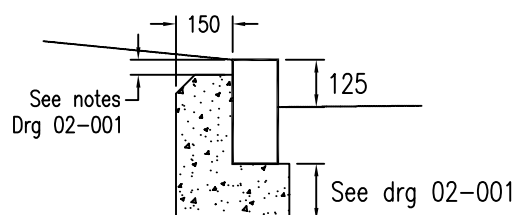
SAFETY KERB
Trief Cadet or Charcon HGV kerbs or similar approved.



LOW FLOOR BUS STOP KERB
Charcon Access bus stop kerbs with integral marker bump.



GUIDED BUS ACCESS KERB
180mm Charcon Access kerb



NATURAL STONE (as approved by
Employer's Representative)
Dressed pennant or granite kerb; sizes vary
BS EN 1343