



Easy  
Read



# Cleaner air in Bristol

What do you think?



# Easy Read

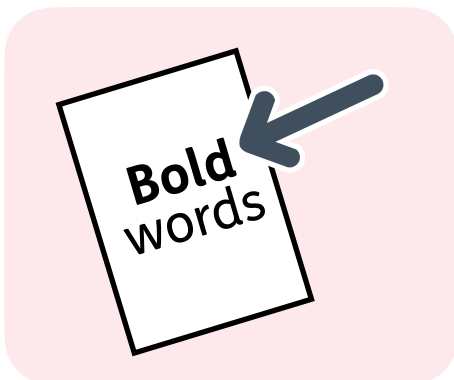


This is an Easy Read version of some information.

It uses easier words and pictures.



Some people may still want help to read it.



Some words are **bold** to show they are important.



We explain bold words if they are hard to understand.

# What is in this booklet

About this survey .....	4
Questions about where you are in Bristol.....	5
Questions about air pollution .....	7
Questions about lowering the effects of air pollution.....	13
Questions about you .....	32

# About this survey

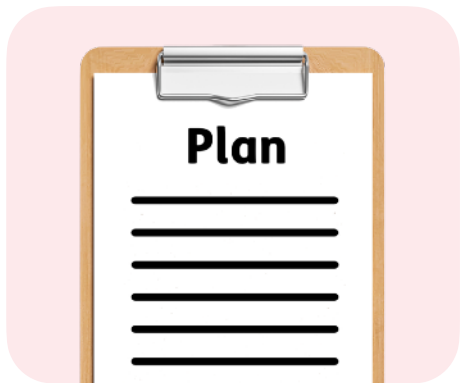


This survey is from Bristol City Council.



We want to lower the amount of **air pollution** in Bristol.

**Air pollution** is when the air is dirty. The air might have gases or smoke in it, and you cannot see or smell some kinds of air pollution.



We are writing a plan to make the air cleaner.



You can help us by answering the questions in this survey.

# Questions about where you are in Bristol



**Question 1:** What is your full postcode?  
For example, BS13 9BC.



We are asking this to check that we are hearing from people in different parts of the city.



If you are answering for an organisation, please write the postcode of where the organisation is.



**Question 2:** Are you answering these questions for yourself, or for a business or organisation?

For myself.

For a business.

For an organisation.

# Questions about air pollution



**Question 3:** How worried are you about air pollution in Bristol?

Very worried

Quite worried

A bit worried

Slightly worried

Not at all worried



**Question 4:** How well do you understand how air pollution affects your health?

Very well

Quite well

Not well

Not at all



**Question 5:** Would you like to know more about how air pollution affects your health?

Yes.

No.

I do not know.



**Question 6:** How much do you think air pollution affects you or your family's health?

High effect

Medium effect

Low effect

No effect

I do not know



If you think the health of someone you know is affected by air pollution, please tell us how here.



Please do not write their name or any personal information about them here.



**Question 7:** Have you noticed air pollution in Bristol?



This might be smelling or seeing it, or feeling like it has affected your health.

Yes.

No.

I do not know.



**Question 8:** If you said yes, please can you tell us:



- More about where you noticed it?

This might be at home, on your way to work or school, or on a certain street.



- How often you notice it?



**Question 9:** How much of a **priority** should lowering air pollution be for Bristol City Council?

A **priority** is something important that you work on first.

Very high priority

High priority

Medium priority

Low priority

Not at all a priority



If you would like to tell us why, please write in this box:

# Questions about lowering the effects of air pollution



Our plan will look at how we can lower air pollution both inside and outside buildings.



Air pollution can come from many different places, like:

- Buses and cars.



- Burning wood to heat your home.



- Cooking food or using cleaning sprays inside your home.



We also want to make changes that are fair for everyone.



We will ask you what you think about all of these things in the questions below.

## Questions about transport



**Question 10:** Which ways do you travel around the city?

You can tick as many ways as you want to.

Walk.

Cycle.

Bus.

Motorbike or moped.

There are more answers on the next page.

- E-scooter that you rent from a company.
- E-scooter that you own.
- Train.
- Taxi or another type of car that you hire.
- Car that you drive with only you in it.
- Car that you drive with other passengers in it.
- Car where you are the passenger.



**Question 11:** Do you own or use a car?

Yes.

No.

I do not want to say.



**Question 12:** How easy is it for you to get to the places you need to go?

Very easy

Easy

Not easy  
or  
difficult

Difficult

Very  
difficult



**Question 13:** Do you feel you have other choices you can afford other than using a car?

This might be walking, cycling, buses or car clubs, where people share a car.

Yes.

A bit.

No.



**Question 14:** What would make it easier for you to travel without using a car?

Buses and trains that you know will turn up on time.

Lower costs for buses and trains.

Better ways to walk.

There are more answers on the next page.

Better ways to cycle.

Being able to share a car or bike with others, like a car club or e-bikes.

Being able to work at different times of day.

None of these.

**Question 15:** Please tell us more about:



- Any problems you have when travelling around the city.



- What would make travelling easier for you or your family.



**Question 16:** We understand that some people need to use a car to get around the city.

If this applies to you, please let us know why:

A large, empty rounded rectangular box with a black border, intended for the respondent to provide their answer.



People travelling around the city is 1 of the main things that makes air pollution in Bristol.

We need to lower air pollution to protect everyone's health.



We would like to know if you support the council making changes to the roads to help people use buses, walk and cycle more easily. These changes would help people drive cars less.



**Question 17:** How much do you agree with the plans to change the roads to help people drive cars less?

Strongly agree

Agree

Neither agree or disagree

Disagree

Strongly disagree

## Questions about burning fuel to heat homes



Burning fuel in a wood-burning stove or fire makes lots of air pollution.



**Question 18:** Do you ever use fuels like wood to heat your home?

Yes.

No.



**Question 19:** If you answered yes, do you have another way to heat your home, like a gas boiler or electric heating?

Yes.

No.



**Question 20:** If you said no, and burning fuel is the only way to heat your home, would you like to be able to use another way to heat your home?

Yes.

No.

**Question 21:** Please tell us more about:



- What would help you stop burning fuel to heat your home.



- Why you want to keep burning fuel to heat your home, if you want to carry on.



**Question 22:** Did you know that burning fuel like wood makes the same amount of a harmful pollution called **particulate pollution** as transport?

Yes.

No.



**Question 23:** Is there anything else you would like to tell us about burning fuel to heat your home?

A large, empty rounded rectangular box with a black border, intended for the user to provide an answer to the question.

## Questions about air pollution inside buildings



**Question 24:** Did you know that air pollution indoors can harm your health?

Yes.

No.

I do not want to say.



**Question 25:** How worried are you about this?

Very worried

Quite worried

A bit worried

Slightly worried

Not at all worried

## Questions about making changes that are fair to everyone



**Question 26:** If there is something you would like to do, what would help you to take part in lowering air pollution in Bristol?

## Other comments about air pollution



**Question 27:** Do you have any other comments about air pollution that you would like to tell us?

This might be:



- Other types of air pollution that the council should lower.



- Certain areas of Bristol where you think we need to work more on lowering air pollution.

Please write your answer on the next page.



Please write your answer  
to question 27 here:

A large, empty rectangular box with rounded corners and a black border, intended for writing the answer to question 27.

# Questions about you



Please answer these questions about yourself.



This will help Bristol City Council to understand what people from different areas and backgrounds think.



You can skip any questions you do not want to answer.

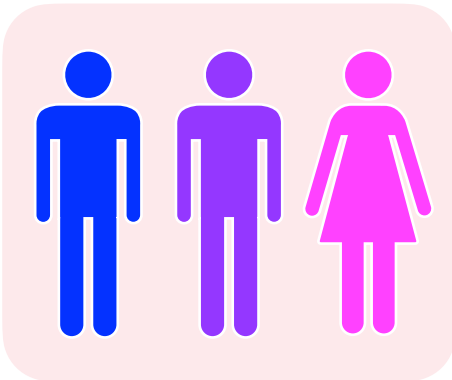


Bristol City Council will keep your information safe and private.



**Question 28:** How old are you?

I do not want to say.



**Question 29:** What is your sex?

Female.

Male.

I do not want to say.

Other - please describe  
your sex:



**Question 30:** Do you have any body or mental health conditions that you have had for more than 12 months?

Yes

No

I do not want to say.



**Question 31:** Do any of your conditions make it more difficult to do your daily activities?

Yes, a little.

Yes, a lot.

I do not want to say.



**Question 32:** What is your **ethnic group**? Only tick 1 box.

Your **ethnic group** means your race, background, or the country you or your family come from.

Asian or Asian British.

Black, Black British,  
Caribbean or African.

Gypsy, Roma or Traveller.

Mixed or more than 1  
ethnic group.

White British.

There are more answers on the next page.

Other white background.

I do not want to say.

Other ethnic background -  
please describe your ethnic  
background:



What do you think about this Easy  
Read booklet?

Please fill in this survey to tell us  
what you think:

[www.easy-read-online.co.uk/easy-  
read-feedback-survey](http://www.easy-read-online.co.uk/easy-read-feedback-survey)

This Easy Read booklet was produced by [easy-read-online.co.uk](http://www.easy-read-online.co.uk)  
The booklet includes images licensed from Shutterstock.