



# What do you think of blue badge parking in Bristol?



Easy  
Read

# Easy Read

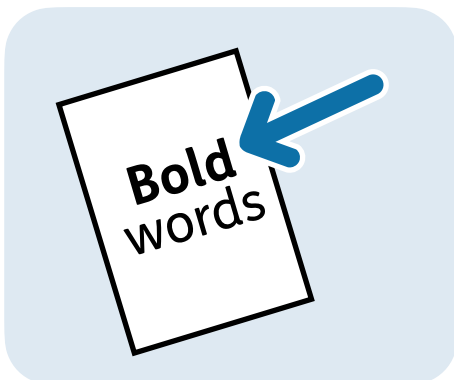


This is an Easy Read version of some information.

It uses easier words and pictures.



Some people may still want help to read it.



Some words are **bold** to show they are important.



We explain bold words if they are hard to understand.

# What is in this booklet

About this booklet .....	4
What do you think? .....	5
Questions for you to answer .....	7
Get involved .....	25
Sending your answers .....	40

# About this booklet



This booklet is from Bristol City Council and the Disabled People's Strategic Transport Advisory Group.



The Disabled People's Strategic Transport Advisory Group help Bristol City Council make sure transport in Bristol meets the needs of disabled people.



This booklet will ask you about **blue badge** parking in Bristol.

Disabled people with **blue badges** can park their car in accessible blue badge parking spaces.

# What do you think?



We want to know what you think of blue badge parking in Bristol.



This will help us to give Bristol City Council good advice about how to improve blue badge parking.



To tell us what you think, please answer the questions in this booklet.



Any information you give us will be kept safe.



Nobody will know that your answers came from you.



You have until Tuesday 21 July 2026 to send us your answers.



We will explain how you can send us your answers at the end of the booklet.

# Questions for you to answer



**Question 1:** Do you have a blue badge?

Yes, I have one for myself

Yes, I have one because I am a carer for a friend, family member or partner

Yes, I have one because I am a professional carer

No



**Question 2:** If you do not have a blue badge, are you answering these questions for someone who does have one?

Yes

No



**Question 3:** Do you get free **vehicle tax** because you are disabled?

**Vehicle tax** is the money you pay to the government to use your car on the road.

Yes

No



**Question 4:** Are you the driver or the passenger in the car that has a blue badge?

Always the driver

Mostly the driver, but sometimes I am the passenger

Sometimes the driver, sometimes the passenger, it is equal

Mostly the passenger, but sometimes I am the driver

Always the passenger



**Question 5:** How did you get a blue badge?

- I get one automatically because I get disability benefits, like PIP
  
- I applied for one



**Question 6:** Please tick all the places you often park:

- A blue badge parking space outside my home
- Public or council car parks
- Private car parks
- Blue badge parking spaces on the street
- Other parking spaces on the street
- Parking areas that are only for people who live nearby
- On streets with double or single yellow lines



**Question 7:** Please tick all the things that you need a blue badge parking space to have:

A lower kerb

More room at the back of the parking space

More room on the sides of the parking space, so the space is wider than normal

Use of the colour blue so that I understand it is a disabled parking space

High contrast colours

Clear signs

There are more answers on the next page.

Flat ground

Other - please describe  
what you need below:



**Question 8:** Please tick all the issues you often have when trying to park your car:

- Blue badge parking spaces that are too far away from where I need to be
- Paths that are not looked after
- Blue badge parking spaces that are on a steep slope
- Blue badge parking spaces are already taken
- My car is too tall for some car parks
- Other - please describe the issues below:

**Question 9:** Think about how you would like blue badge parking to improve. How important are each of these improvements to you?



a. More blue badge parking spaces on high streets and in Bristol city centre.

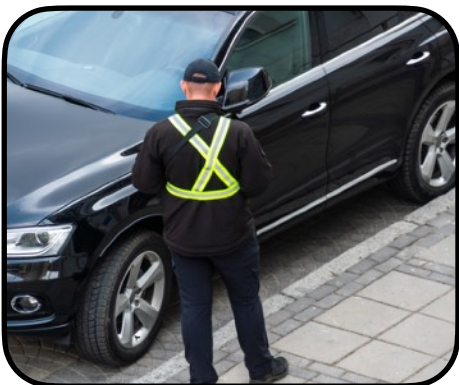
Very important

Important

Only a little important

Not very important

Not important at all



b. Better checking of whether people who do not have blue badges are parking in blue badge spaces.

Very important

Important

Only a little important

Not very important

Not important at all



c. Repainting blue badge parking spaces.

Very important

Important

Only a little important

Not very important

Not important at all



d. More blue badge parking spaces in car parks.

Very important

Important

Only a little important

Not very important

Not important at all



**Question 10:** Please tell us about anything else that you think would improve blue badge parking:

A large, empty rounded rectangular box with a black border, intended for the user to provide their answer to the question.



**Question 11:** Have you ever gotten a fine for parking somewhere dangerous because you could not find a parking space anywhere else?

Yes

No

If yes, please tell us what happened:



**Question 12a:** Do you find that there are enough blue badge parking spaces in multi-storey car parks owned by the council?

Yes

No

I am not sure



**Question 12b:** Do you find that there are enough blue badge parking spaces in multi-storey car parks owned by other organisations?

Yes

No

I am not sure



**Question 12c:** Do you find that there are enough blue badge parking spaces in all other car parks that are not multi-storey?

Yes

No

I am not  
sure



**Question 12d:** Do you find that there are enough blue badge parking spaces on the streets in and around Bristol city centre?

Yes

No

I am not  
sure



**Question 12e:** Do you find that there are enough blue badge parking spaces on local high streets?

Yes

No

I am not sure



**Question 12f:** Do you find that there are enough blue badge parking spaces near health care services, like hospitals?

Yes

No

I am not sure



**Question 12g:** Do you find that there are enough blue badge parking spaces near education services, like schools?

Yes

No

I am not  
sure



**Question 12h:** Do you find that there are enough blue badge parking spaces near train stations?

Yes

No

I am not  
sure



**Question 13:** Please tell us about any other places where you think there are not enough blue badge parking spaces:

A large, empty rectangular box with a black border, intended for the user to provide their answer to the question.



**Question 14:** Please tell us any other comments you have about blue badge parking in Bristol:

A large, empty rectangular box with a black border, intended for the user to provide their comments.

# Get involved



We are looking for 20 people who have blue badges to be a part of a new group.



The group will help us and Bristol City Council to improve transport in Bristol.



Being part of the group would involve answering more questions and taking part in a few meetings.



Most meetings will be held online.



Being a part of the group would take around 2 hours of your time a month.



If you are interested in being a part of the group, please fill in the following form.



We will let you know if we would like you to be part of the group by 17 August 2026.



If you are not interested, please skip the form and go to the chapter named **sending your answers**.

# The form



**Question 1:** Are you interested in becoming a part of our new group?

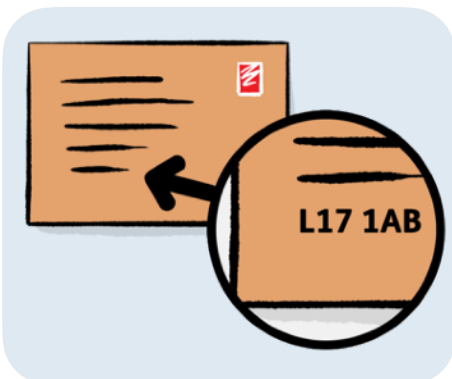
Yes

No

**Question 2:** If you are interested, please tell us:



Your name:

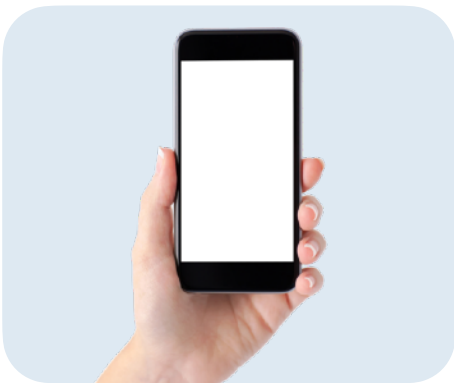


Your postcode:

Please also tell us:



Your email address:



Your phone number:



**Question 3:** Why are you able to get a blue badge?

You can tick as many answers as you need.

Because I get the higher amount of the Disability Living Allowance benefit

Because I got a score of 8 or more on the 'moving around' part of my PIP assessment

Because I am blind

Because I get a War Pensioners' Mobility Supplement benefit

There are more answers on the next page.

Because I got money for becoming disabled after serving in the armed forces

Because I got a score of 10 on the 'planning and following journeys' part of my PIP assessment

Because I cannot walk at all

Because I cannot walk without help from someone else or using equipment, like a cane

Because I find walking very hard, as it is painful or takes a long time

There are more answers on the next page.

Because walking is dangerous to my health and safety

Because I have a serious illness, which means I cannot walk or find walking very hard

Because I have a disability in both arms and cannot use parking ticket machines

Because I have a child under the age of 3 who has an illness that means I have to carry around a lot of medical equipment

There are more answers on the next page.

Because I have a child under the age of 3 who has an illness that means we must always be near a vehicle in case they need emergency medical treatment

Because being near vehicles, in traffic, or in car parks is dangerous to my health and safety

Because I find it very hard to plan or follow a journey

Because I find it hard to control my actions and do not understand how my behaviour can affect others

There are more answers on the next page.

Because I find it hard to control my actions when I have to deal with an issue

Because I am very anxious and scared of public spaces



#### Question 4: How old are you?

0 to 10

11 to 15

16 to 17

18 to 24

25 to 34

35 to 44

45 to 54

55 to 64

65 to 74

75 to 84

85 or older

I do not want to say



**Question 5: What is your ethnic background?**

Your **ethnic background** is your race and the country that your family came from.

- Asian or Asian British
- Black, Black British, Caribbean or African
- Gypsy, Roma or Traveller
- More than 1 ethnic background
- White British
- Other White background

There are more answers on the next page.

I do not want to say

Other - please describe  
your ethnic background:



**Question 6: What is your religion?**

No religion

Buddhist

Christian

Hindu

Jewish

Muslim

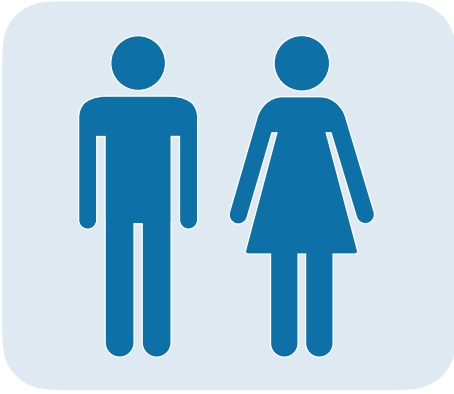
Pagan

Sikh

There are more answers on the next page.

I do not want to say

Other - please describe  
your religion:



**Question 7: What is your sex?**

Your **sex** is whether you are a woman or a man.

Woman

Man

I do not want to say

Other - please describe  
your sex:

# Sending your answers

To send us your answers, you can either:



Post this booklet to:

Blue Badge parking survey  
Transport Engagement Team  
PO BOX 3399  
100 Temple Street  
Bristol  
BS1 9NE



Email this booklet to:

[transport.engagement@bristol.gov.uk](mailto:transport.engagement@bristol.gov.uk)  
by 21 July 2026.

This Easy Read booklet was produced by [easy-read-online.co.uk](http://easy-read-online.co.uk)  
The booklet includes images licensed from Shutterstock.