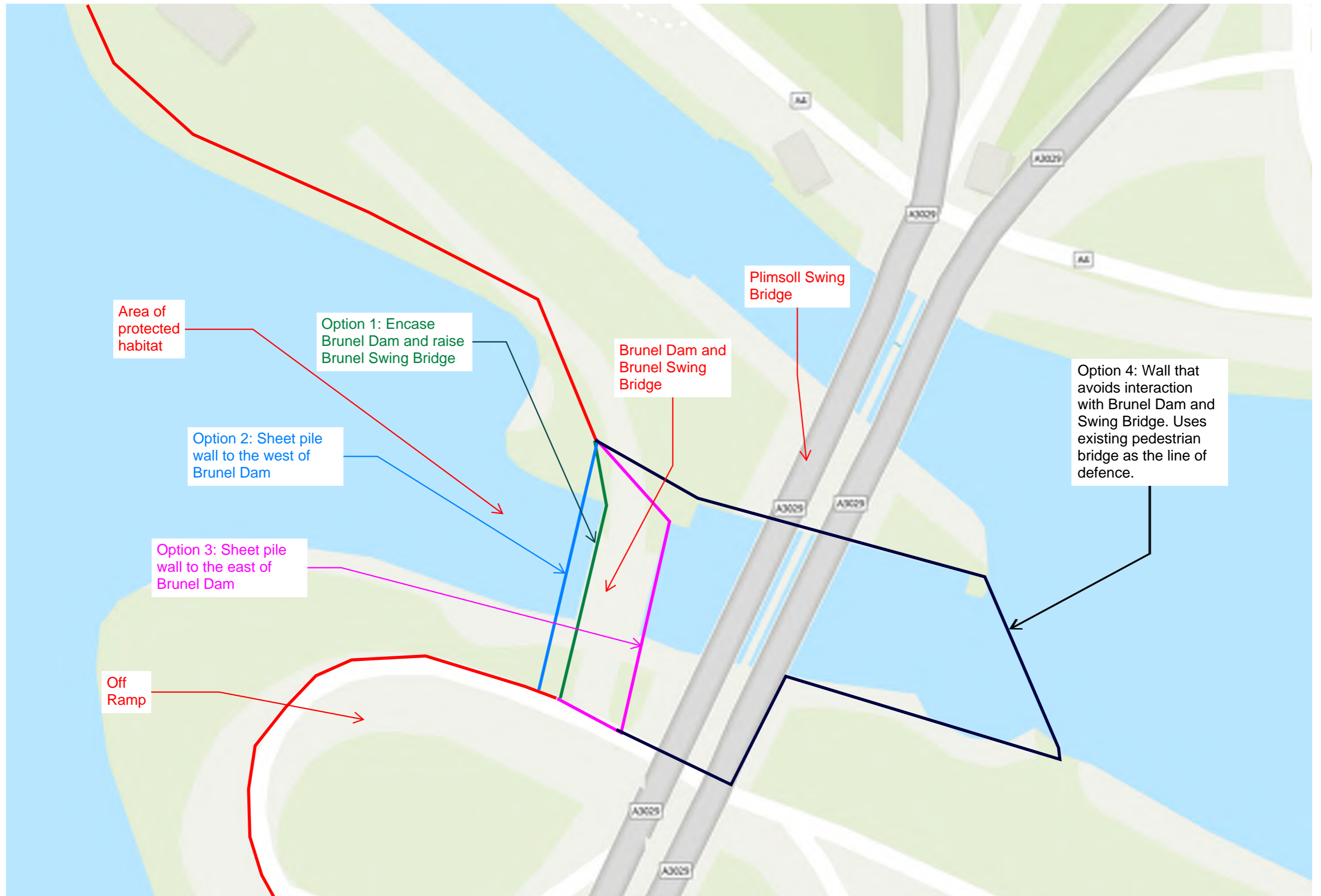


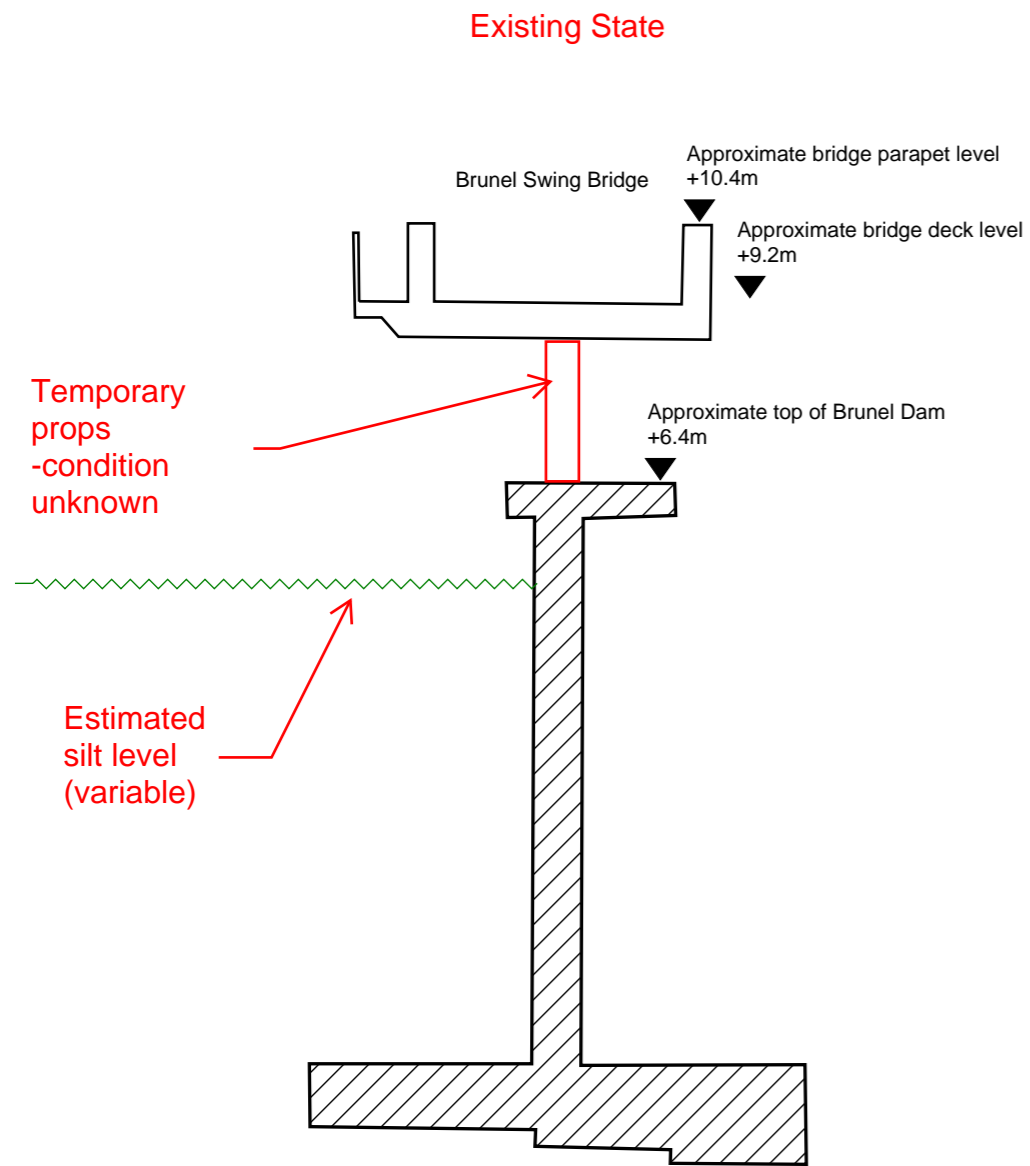
Summary - Line of Defence



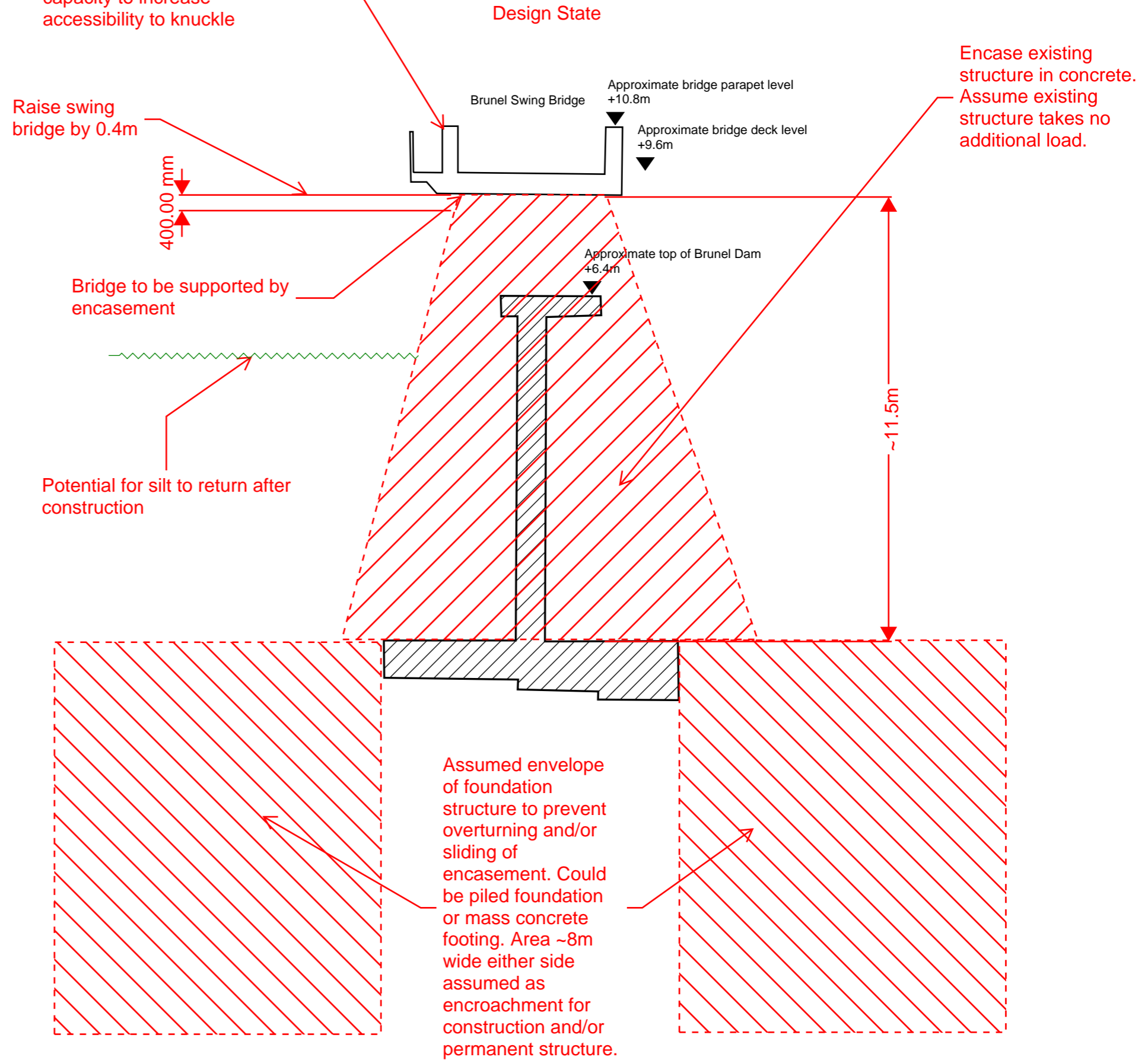
Existing State



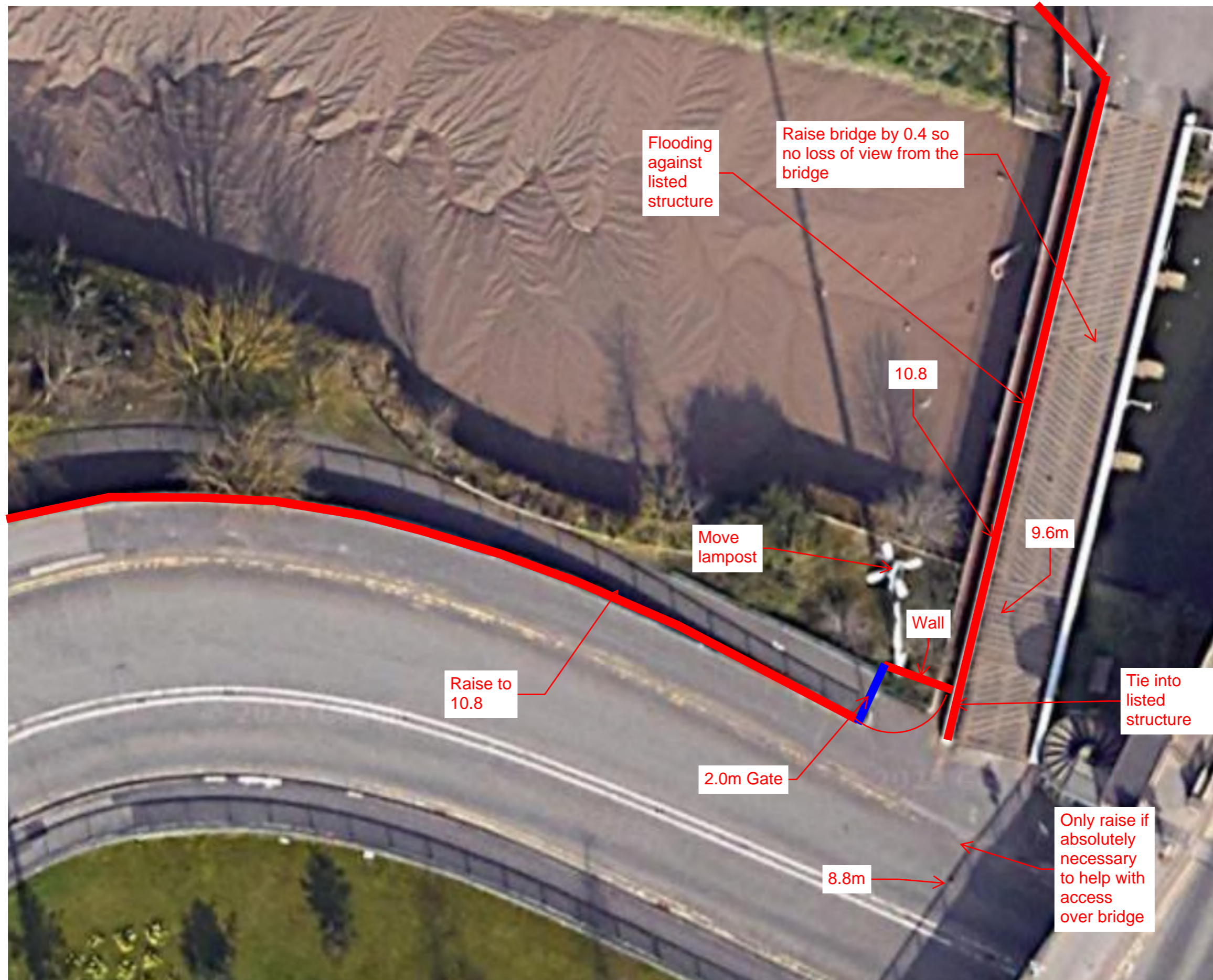
Option 1- Bridge raising, dam encasement



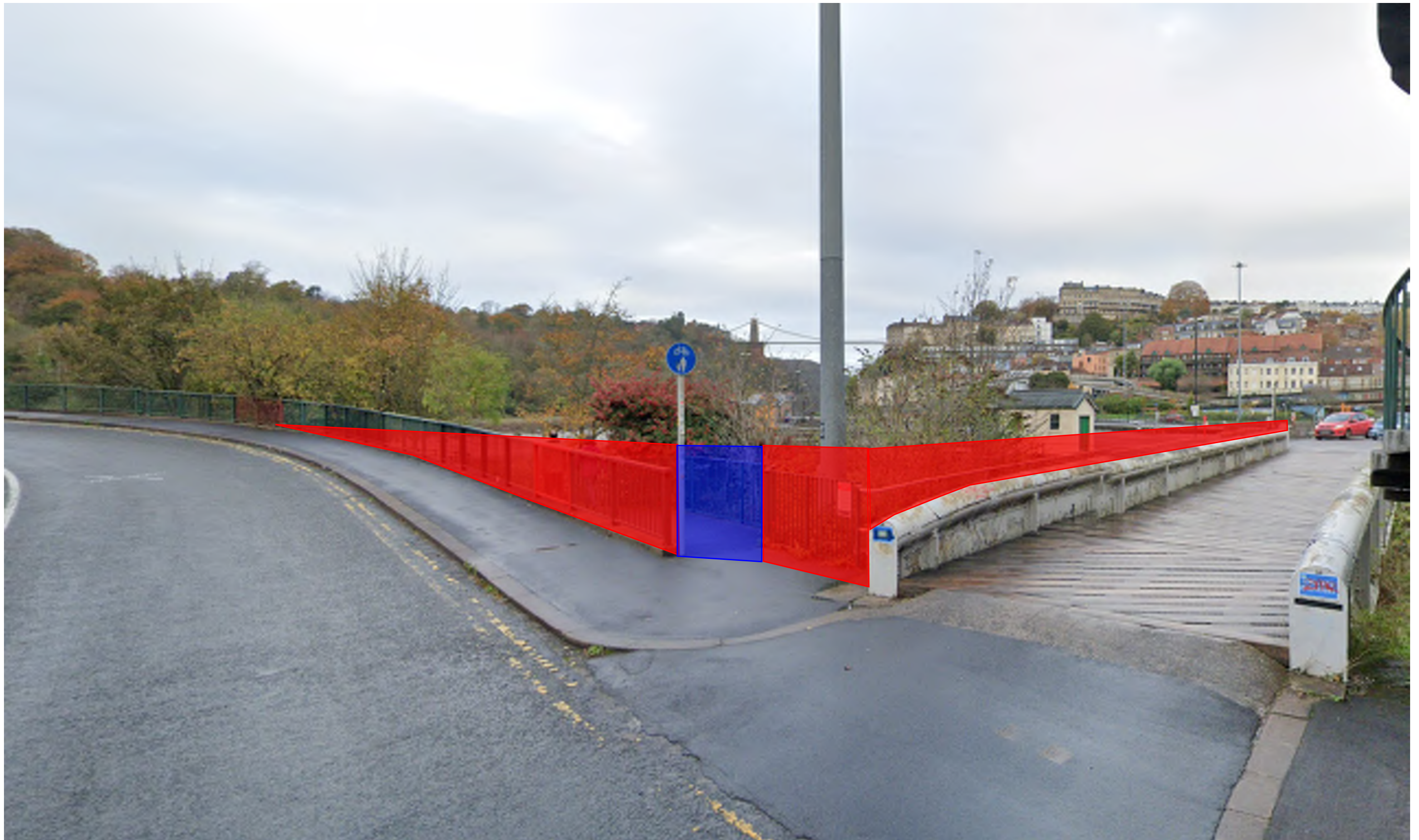
Assume bridge structure to be waterproof and remedial works to listed structure to extend to design life of flood scheme. Potential to increase structural capacity to increase accessibility to knuckle



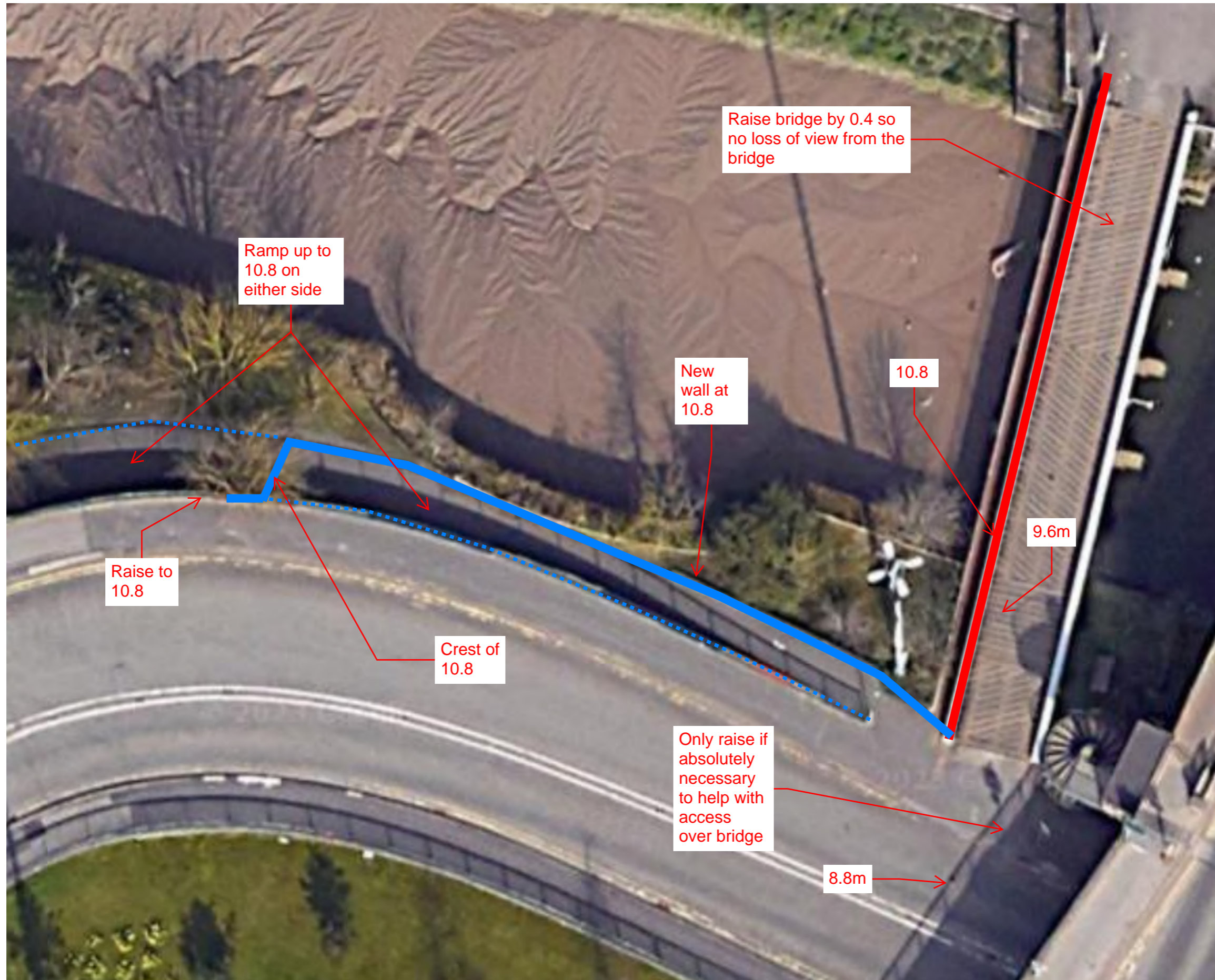
Option 1a - Bridge raising, dam encasement, flood gate



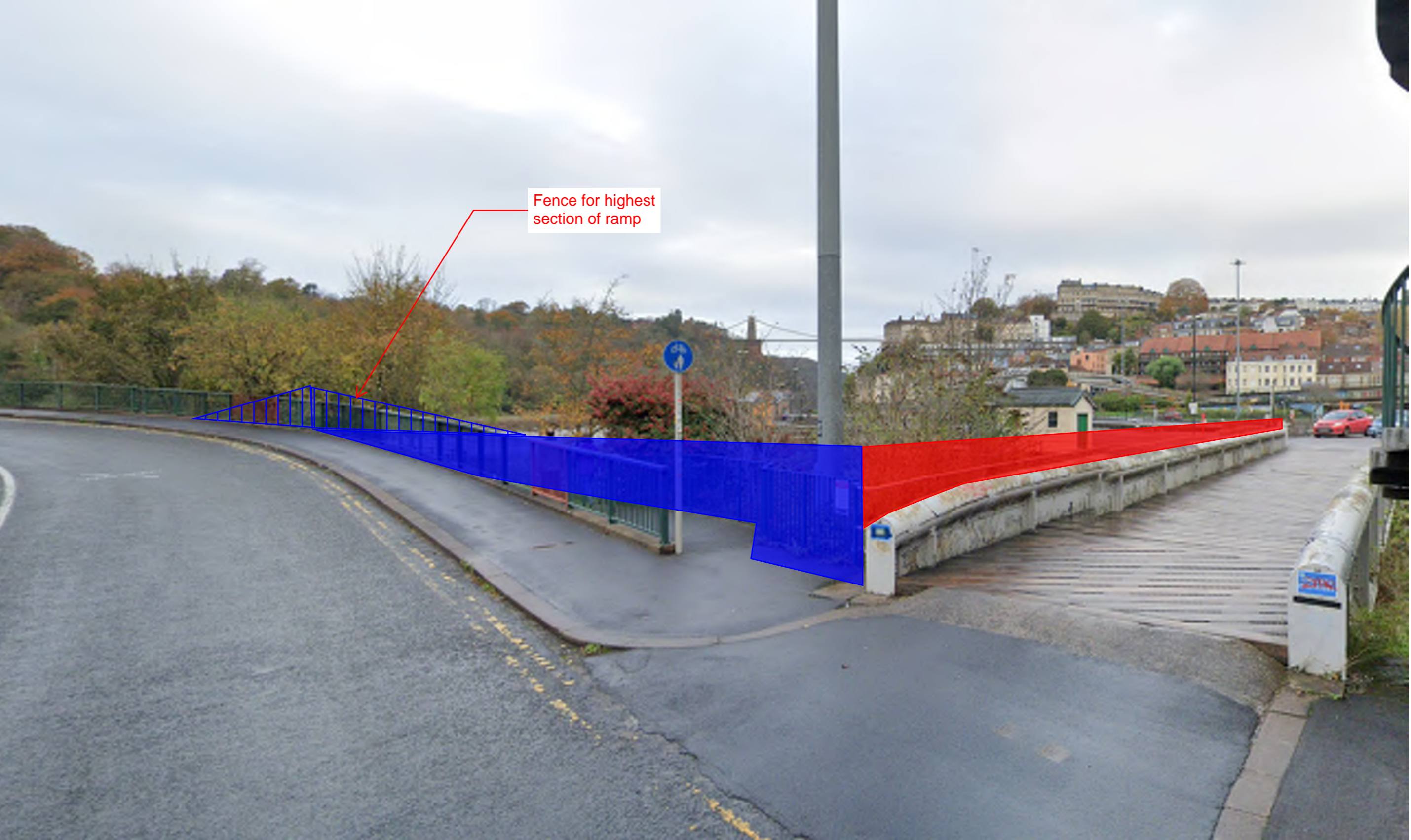
Option 1a - Bridge raising, dam encasement, flood gate



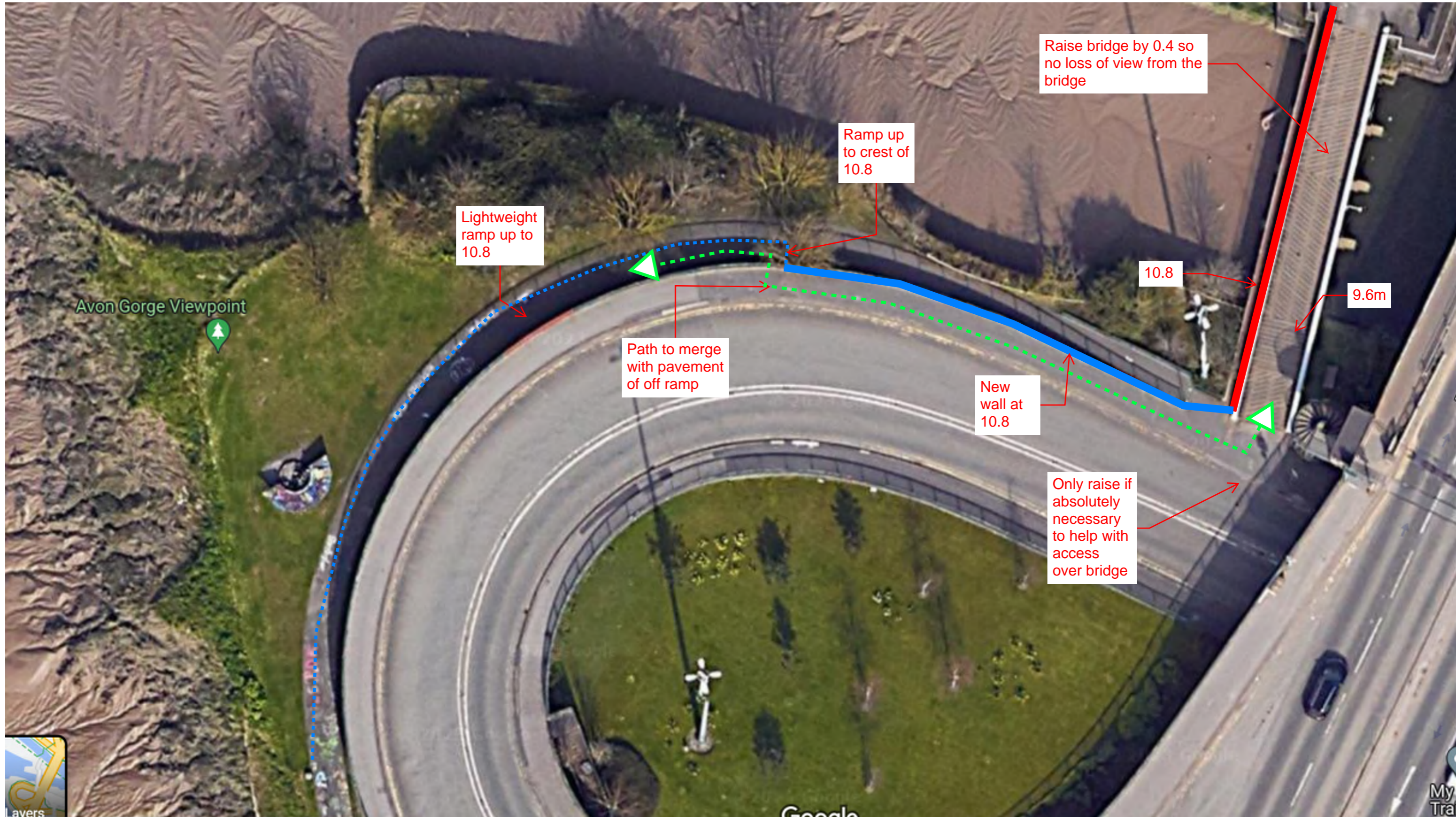
Option 1b - bridge raising, dam encasement, ramp



Option 1b - bridge raising, dam encasement, ramp



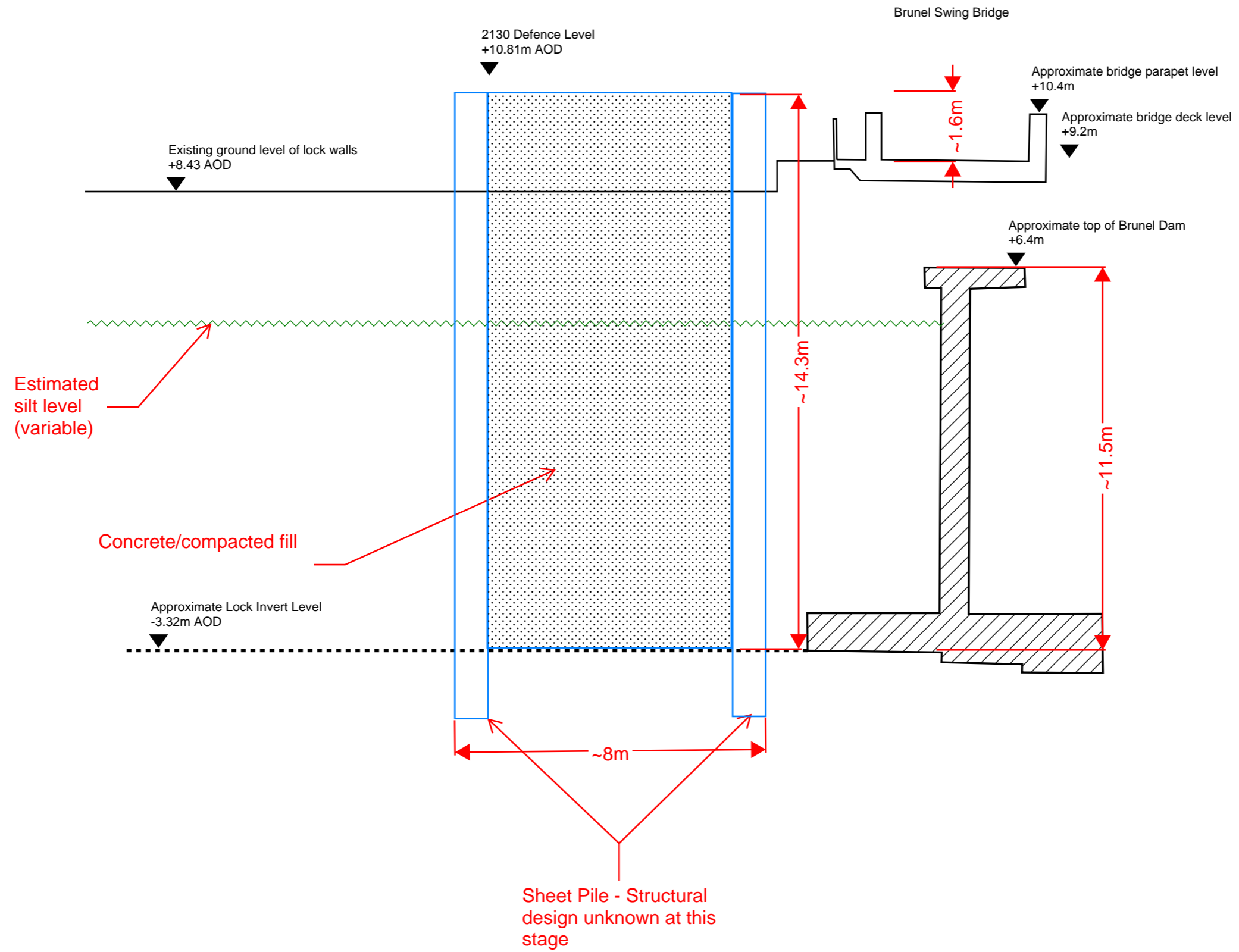
Option 1c - bridge raising, dam encasement, lightweight ramp



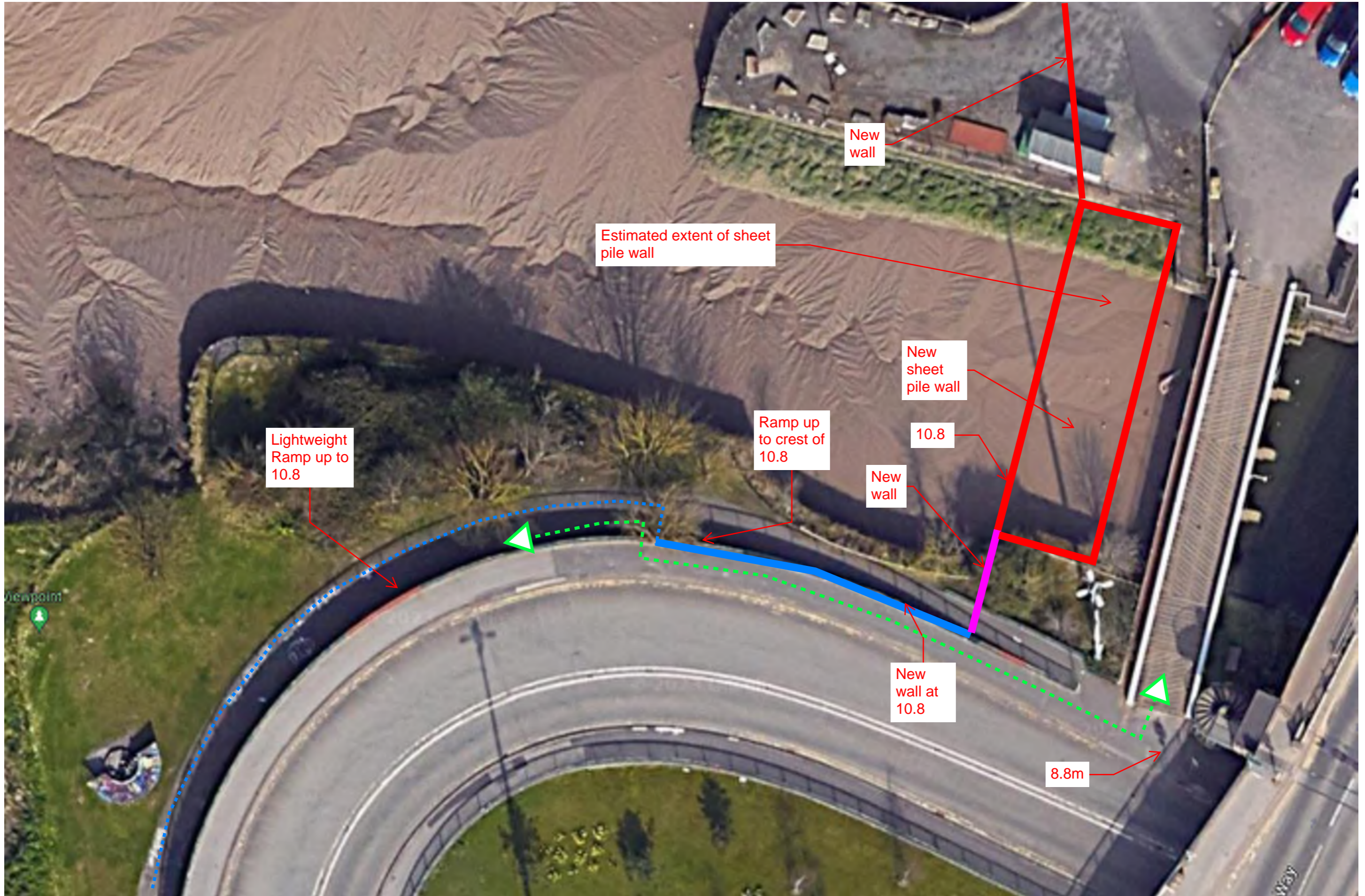
Option 1c - bridge raising, dam encasement, lightweight ramp



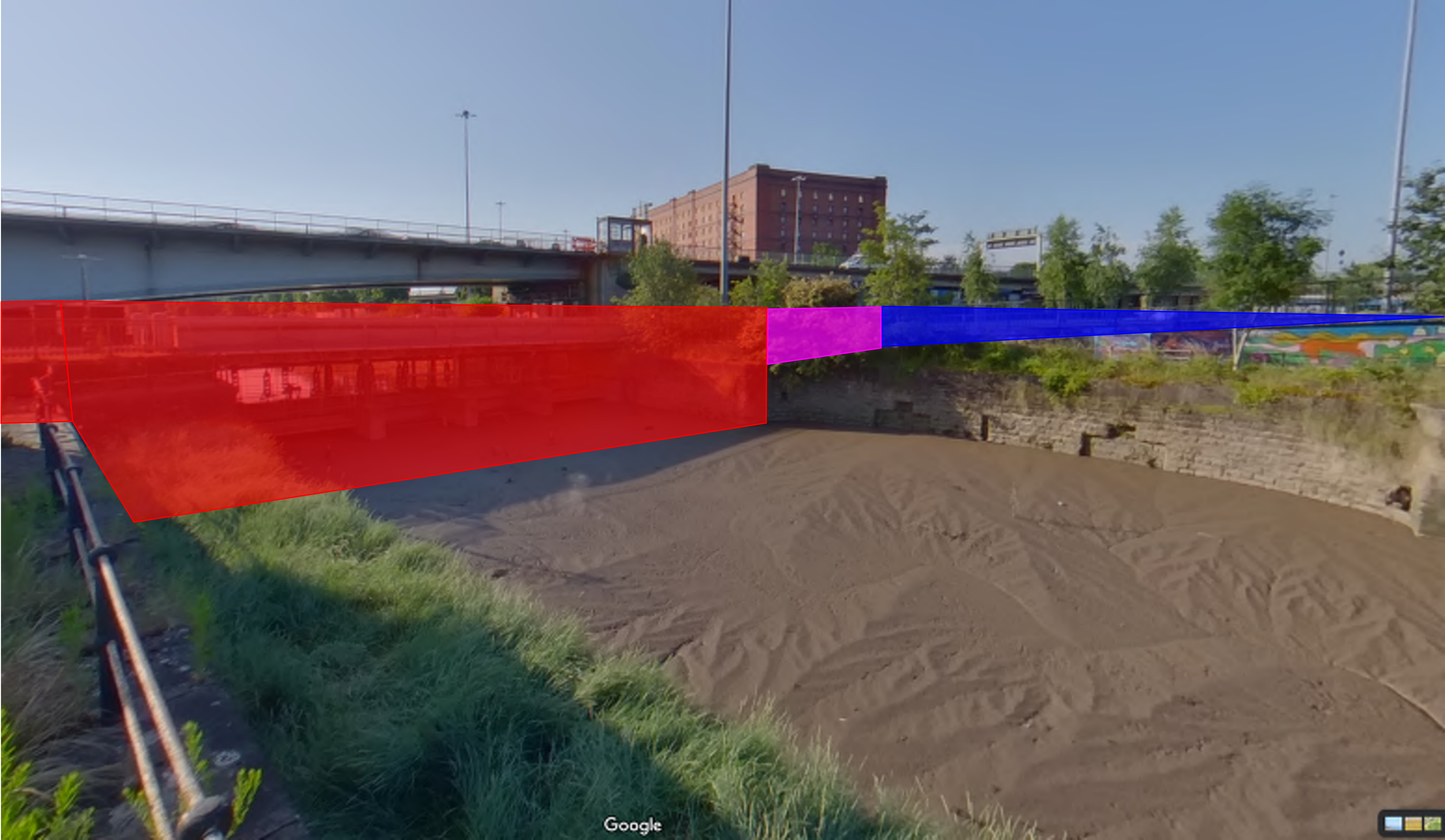
Option 2 - sheet pile on west



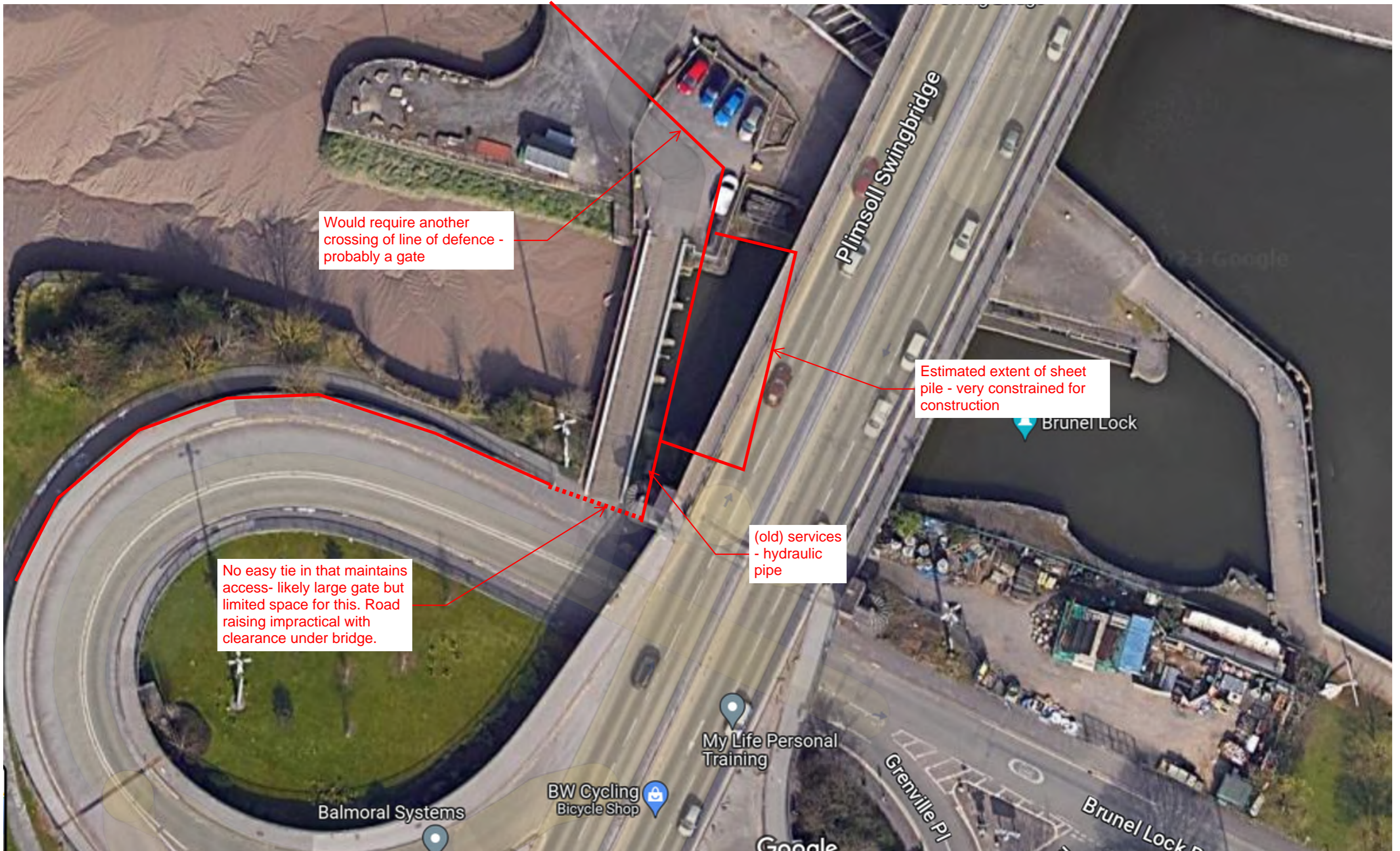
Option 2 - sheet pile on west, lightweight ramp



Option 2 - sheet pile on west, lightweight ramp



Option 3 - sheet pile on east



Option 4 - floating harbour wall route

