



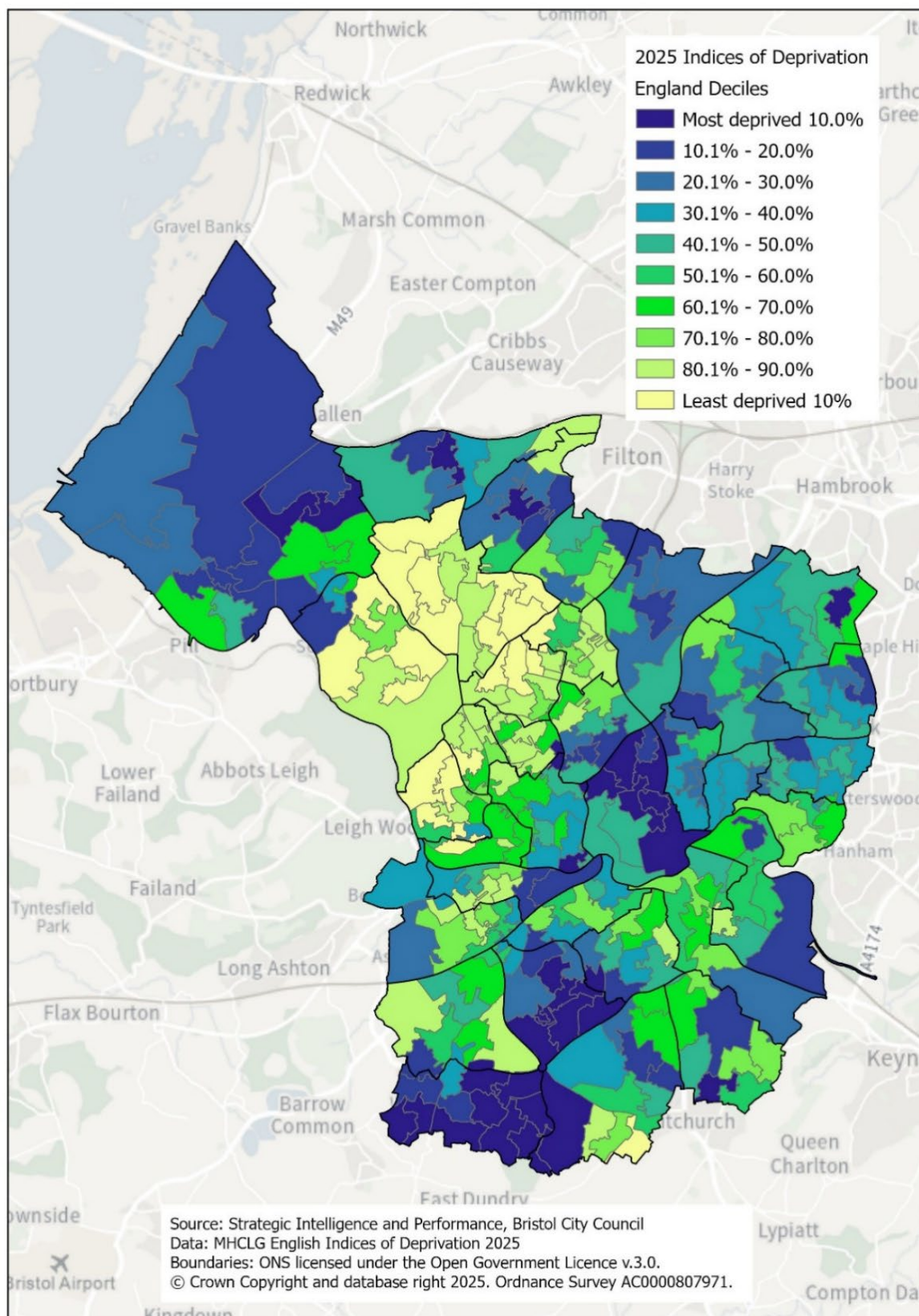
DEPRIVATION IN BRISTOL

2025 HEADLINES

HEADLINES

- Relative to other parts of England, levels of multiple deprivation in Bristol are lower than in 2019. A lower proportion of Bristol's population live in the most deprived neighbourhoods in England in 2025 than in 2019.
- 11% of Bristol residents (53,100 people) live in the most deprived 10% of neighbourhoods in England. This includes 13,500 children (16% of all children) and 7,740 older people (9% of all older people). This lower than in 2019 when it was 15% of Bristol residents and 16% of residents in 2015.
- Bristol has the lowest level of relative deprivation of the Core Cities in England.
- The proportion of the population that are income or employment deprived has increased since ID2019.
- Bristol has 30 LSOAs in the most deprived 10% in England for Multiple Deprivation in 2025 (41 LSOAs in 2019), including 2 LSOAs in Hartcliffe in the most deprived 1% in England.
- 9 of the 10 most deprived neighbourhoods in Bristol are in South Bristol (see Fig 2), including 5 LSOAs in Hartcliffe and Witherwood ward.
- Looking at change in the most deprived neighbourhoods since 2019 - 8 of Bristol's most deprived neighbourhoods are relatively more deprived in 2025 than in 2019, 22 of Bristol's most deprived neighbourhoods are relatively less deprived in 2025 than in 2019, whilst 11 of Bristol's most deprived neighbourhoods in 2019 are no longer in the most deprived 10% in England (see Fig 3 and Fig 4).
- Overall, despite the improvement (relative to other parts of the country), the Indices of Deprivation 2025 reinforce previously identified patterns of deprivation across the city. Bristol continues to have deprivation 'hot spots' that are amongst some of the most deprived areas in the country yet are adjacent to some of the least deprived areas in the country.

Fig 1. 2025 England Deprivation Deciles by Lower Layer Super Output Area (LSOA)
 Source: Strategic Intelligence & Performance using MHCLG 2025 Indices of Deprivation



INTRODUCTION

The Ministry of Housing, Communities and Local Government (MHCLG) published new 2025 Indices of Deprivation for England on 30 October 2025. This release updates the English Indices of Deprivation 2019. The Index of Multiple Deprivation (IMD) is the official measure of relative deprivation in England and is part of a suite of outputs that form the Indices of Deprivation (IoD).

The English Indices of Deprivation measure relative not absolute levels of deprivation in 33,755 small areas or neighbourhoods, called Lower Layer Super Output Areas, in England. The indicators used to construct the Indices of Deprivation 2025 (IoD2025) are based on the most up-to-date information available when the IoD2025 was compiled.

Overall, a total of 55 indicators comprise the IoD25, an increase from 39 in the IoD19. Of these, 20 are new indicators, 14 indicators have been significantly modified, while 21 have been updated to more recent timepoints. 3 indicators have also been removed.

DEPRIVATION IN BRISTOL

Fig 2. The 10 most deprived neighbourhoods in Bristol

Source: Strategic Intelligence & Performance using MHCLG 2019 and 2025 Indices of Deprivation

LSOA21 local name	Ward (best-fit)	England rank out of 33,755 (1 is most deprived)	England % rank
Bishport Avenue	Hartcliffe & Withywood	211	0.6%
Hareclive	Hartcliffe & Withywood	265	0.8%
Fulford Road North	Hartcliffe & Withywood	378	1.1%
Whitchurch Lane	Hartcliffe & Withywood	555	1.6%
Filwood Broadway	Filwood	574	1.7%
Whitchurch Park West	Hengrove & Whitchurch Park	627	1.9%
Four Acres	Hartcliffe & Withywood	693	2.1%
Inns Court	Filwood	766	2.3%
Ilminster Avenue West	Knowle	954	2.8%
Lawrence Weston South	Avonmouth & Lawrence Weston	979	2.9%

Fig 3. Change in the Most Deprived Neighbourhoods 2019 to 2025

Source: Strategic Intelligence & Performance using MHCLG 2019 and 2025 IoD

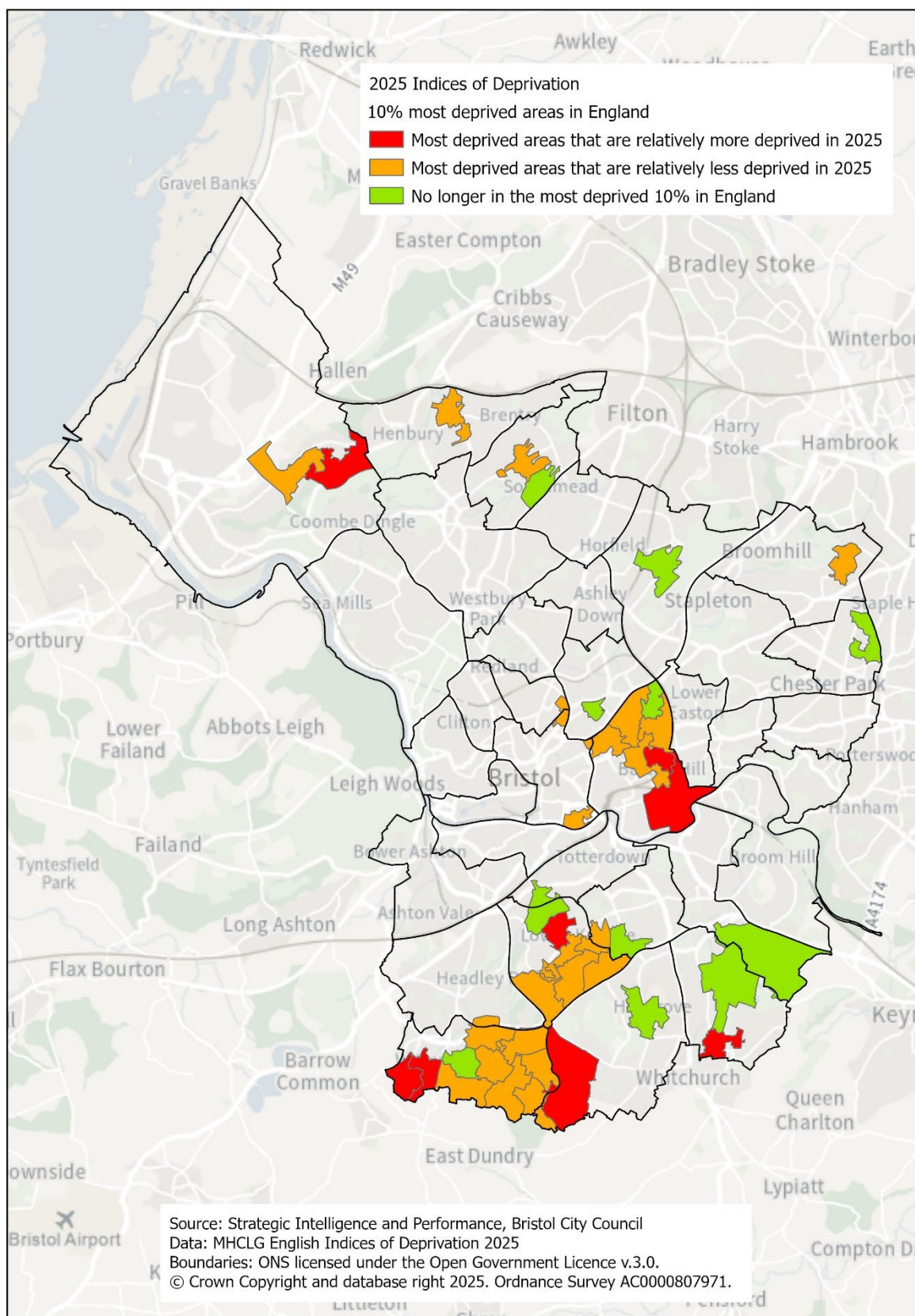


Fig 4. Change in the Most Deprived Neighbourhoods 2019 to 2025

Source: Strategic Intelligence & Performance using MHCLG 2019 and 2025 Indices of Deprivation

Neighbourhoods that are relatively more deprived in 2025 than in 2019

LSOA21 local name	Ward (best-fit)	IMD2019 England Rank	IMD2025 England Rank	Change in rank
Whitchurch Park West	Hengrove & Whitchurch Park	1,665	627	-1,038
Lawrence Weston South	Avonmouth & Lawrence Weston	1,445	979	-466
Burnbush	Stockwood	2,676	2,355	-321
Barton Hill	Lawrence Hill	2,023	1,730	-293
Sherrin Way	Hartcliffe & Withywood	2,813	2,549	-264
Four Acres	Hartcliffe & Withywood	890	693	-197
St Philips	Lawrence Hill	1,634	1,621	-13
Glyn Vale	Filwood	2,625	2,620	-5

Neighbourhoods that are no longer in the most deprived 10% in England in 2025

LSOA21 local name	Ward (best-fit)
Ilminster Avenue East	Knowle
Stapleton Road	Lawrence Hill
St Pauls Grosvenor Road	Ashley
East Hillfields	Hillfields
Trymside	Southmead
Withywood	Hartcliffe & Withywood
Lockleaze South	Lockleaze
Burnbush Hill	Stockwood
Hengrove West	Hengrove & Whitchurch Park
Marksbury Road	Filwood
Hicks Gate	Brislington West

INCREASED LEVELS OF INCOME AND EMPLOYMENT DEPRIVATION

In Bristol the proportion of the population that are income or employment deprived has increased since ID2019.

In 2025:

- 22% of all people are income deprived (14% in 2019)
- 37% of children live in income deprived families (21% in 2019)
- 20% of older people are income deprived (17% in 2019)
- 12.4% of working age people are employment deprived (10% in 2019)

The proportion of people income deprived varies greatly across the city from as high as 65% of people living in 'Bishport Avenue' in Hartcliffe and Withywood ward to less than 1% of people living in 'University Halls' in Stoke Bishop.

BRISTOL NEIGHBOURHOODS RANKED IN THE MOST DEPRIVED 100 AREAS IN ENGLAND BY DOMAIN

Fig 5 shows the LSOAs in Bristol that rank in the most deprived 100 areas in England for different domains or types of deprivation.

Fig 5. Domains with LSOAs in the most deprived 100 areas in England

Source: Strategic Intelligence & Performance using MHCLG 2025 Indices of Deprivation

Education, Skills and Training		
Bishport Avenue	Rank 49	Hartcliffe and Withywood ward
Hareclive	Rank 62	Hartcliffe and Withywood ward
Children and Young Peoples sub-domain		
Four Acres	Rank 18	Hartcliffe and Withywood ward
Bishport Avenue	Rank 60	Hartcliffe and Withywood ward
Bishport Avenue East	Rank 78	Hartcliffe and Withywood ward
Filwood Broadway	Rank 99	Filwood ward
Crime		
Stokes Croft West	Rank 42	Central ward
Income Deprivation Affecting Older People		
St Pauls Grosvenor Road	Rank 40	Ashley ward
Barton Hill	Rank 86	Lawrence Hill ward

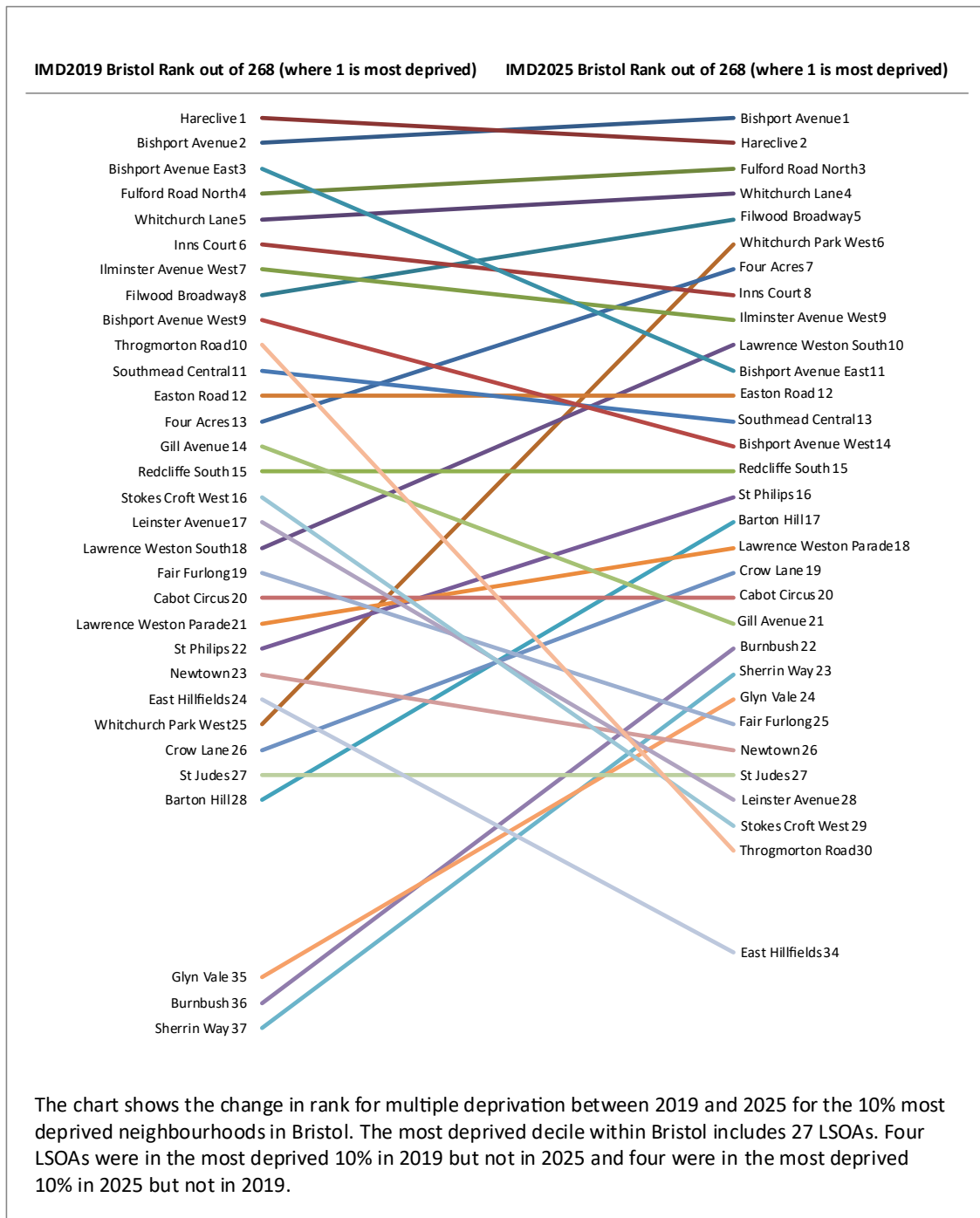
DEPRIVATION WITHIN BRISTOL

Deprivation deciles are used in two main ways – to benchmark levels of deprivation in Bristol relative to other parts of the country and to measure inequality within Bristol.

Fig 6 shows the change in rank for multiple deprivation between 2019 and 2025 for the 10% most deprived neighbourhoods within Bristol. The most deprived decile within Bristol includes 27 LSOAs. Four LSOAs were in the most deprived 10% in 2019 but not in 2025 and four were in the most deprived 10% in 2025 but not in 2019.

Fig 6. Change in Bristol Rank 2019 to 2025 within Bristol 10% most deprived decile

Source: Strategic Intelligence & Performance using MHCLG 2019 and 2025 IoD



Since 2019 the following four LSOAs have moved into the most deprived decile within Bristol:

- ‘Burnbush’ in Stockwood ward (rank 36 to rank 22)
- i‘Sherrin Way’ in Hartcliffe and Withywood ward (rank 37 to rank 23)
- ‘Barton Hill’ in Lawrence Hill ward (rank 28 to rank 17)
- ‘Glyn Vale’ in Filwood ward (rank 35 to rank 24)

Four LSOAs have moved out of the most deprived decile within Bristol since 2019 including:

- ‘East Hillfields’ in Hillfields ward (rank 24 to rank 34)
- ‘Leinster Avenue’ in Filwood ward (rank 17 to rank 28)
- ‘Stokes Croft West’ in Central ward (rank 16 to rank 29)
- ‘Throgmorton Road’ in Filwood ward (rank 10 to rank 30)

FURTHER RESOURCES

MHCLG have published [English indices of deprivation 2025: statistical release](#) together with a full [research report](#), [technical report](#), [rural report](#) and comprehensive [guidance documents](#) accompany this release, along with a series of supporting data tables, a range of spatial data geopackages and a [Local Deprivation Explorer](#) to aid user’s access and interaction with the data.

FURTHER INFORMATION

More comprehensive analysis and maps will follow this summary of initial headlines for Bristol. See [Deprivation](#) web page for the latest analysis.

Please contact jayne.mills@bristol.gov.uk or research@bristol.gov.uk

3 November 2025