



2011 Census Topic Report

Community Cohesion Statistics
July 2013



Contents

1. Introduction	2
2. Community change since 2001	2
3. Population	3
4. Ethnic group	6
5. Religion	10
6. Country of Birth	13
7. Migrants	16
8. Language	18
9. Quality of Life – community cohesion indicators	22
Note.....	30
Useful links.....	30
Further information.....	30
Appendix: Community Cohesion Statistics by ward	30

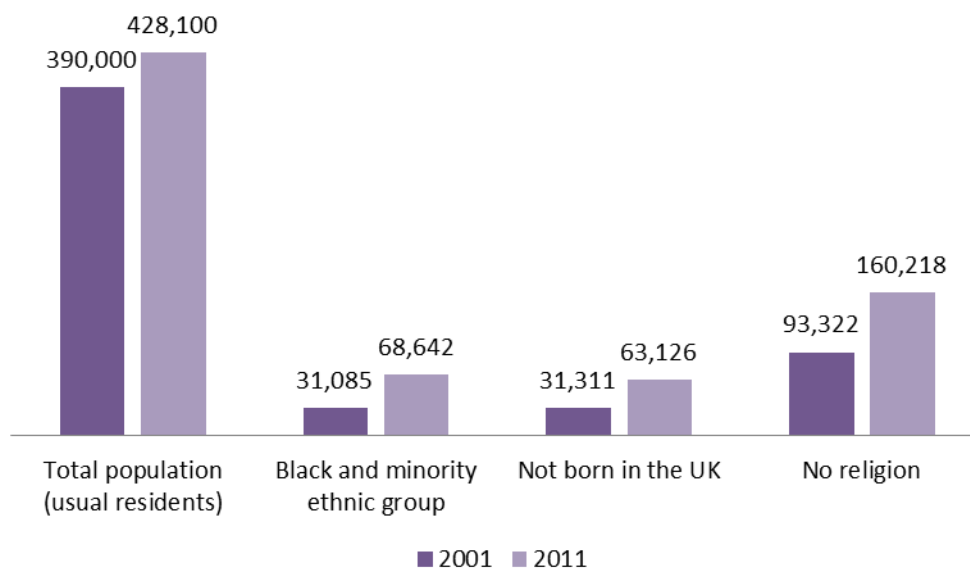
1. Introduction

This report presents community cohesion statistics from the 2011 Census and Quality of Life survey 2007–2012 for the Bristol Local Authority area.

2. Community change since 2001

Figure 1: Community change 2001-11

Source: Office for National Statistics © Crown Copyright 2013.



Since 2001 there has been a large increase in the total number of people living in Bristol which has resulted in a changing population profile. In Bristol, there are now at least 45 religions and at least 50 countries of birth represented and at least 91 main languages spoken by people living in Bristol.

Bristol has experienced similar trends to England and Wales as whole in terms of changes to the population. The total population is estimated to have grown by 38,100 (9.7%) between 2001 and 2011, from 390,000 in 2001 to 428,100 in 2011.

The proportion of the population who are not 'White British' has increased from 12% to 22% of the total population. The largest growth has been in the White Other, Black African and Black Other groups – this includes growth particularly in the Polish and Somali populations. Overall the Black and Minority Ethnic group (BME¹) population has increased from 8.2% in 2001 to 16% in 2011.

The proportion of people living in Bristol who were not born in the UK has increased from 8% of all people in 2001 to 15% of all people in 2011. Of all the people not born

¹ The BME population includes people of all ethnic groups other than White British, White Irish, White Other and White Gypsy or Irish Traveller

in the UK, 61% of them have arrived in the UK in the last decade (ie between 2001 and 2011).

The proportion of people who are Christian has decreased from 62% to 47%, whilst the proportion of people stating that they have no religion has increased from 25% to 37%. The Muslim population living in Bristol has increased from 2% of all people to 5% of all people.

Although all parts of the city have experienced changes in the people living in their area since 2001, in terms of changes which may have the greatest effect on community cohesion, changes have been concentrated in the inner city and inner east areas of the city, in particular in the wards of Lawrence Hill, Ashley, Easton and Eastville. Cabot has also experienced a large growth in population but this is mainly attributable to a large increase in the number of students since 2001, in particular international students. Statistics summarising change by ward between 2001 and 2011 can be found in the appendix.

3. Population

As outlined above, there has been a substantial increase in the number of people usually resident in Bristol over the past decade (2001 to 2011). The total population is estimated to have grown by 9.7%, from 390,000 in 2001 to 428,100 in 2011, a higher rate of growth than the England and Wales average of 7.3%. The growth includes an additional 10,100 students living in Bristol during term time.

The estimated components of population change in Bristol are shown in Figure 2. This shows that population growth in Bristol has been generated by international in-migration, increasing numbers of births and decreasing numbers of deaths. There has been a notable spike in international in-migration between 2004 and 2005, thought to result from the accession countries joining the European Union in 2004.

Figure 2: Components of population change in Bristol 2001-11

Source: Office for National Statistics © Crown Copyright 2013.

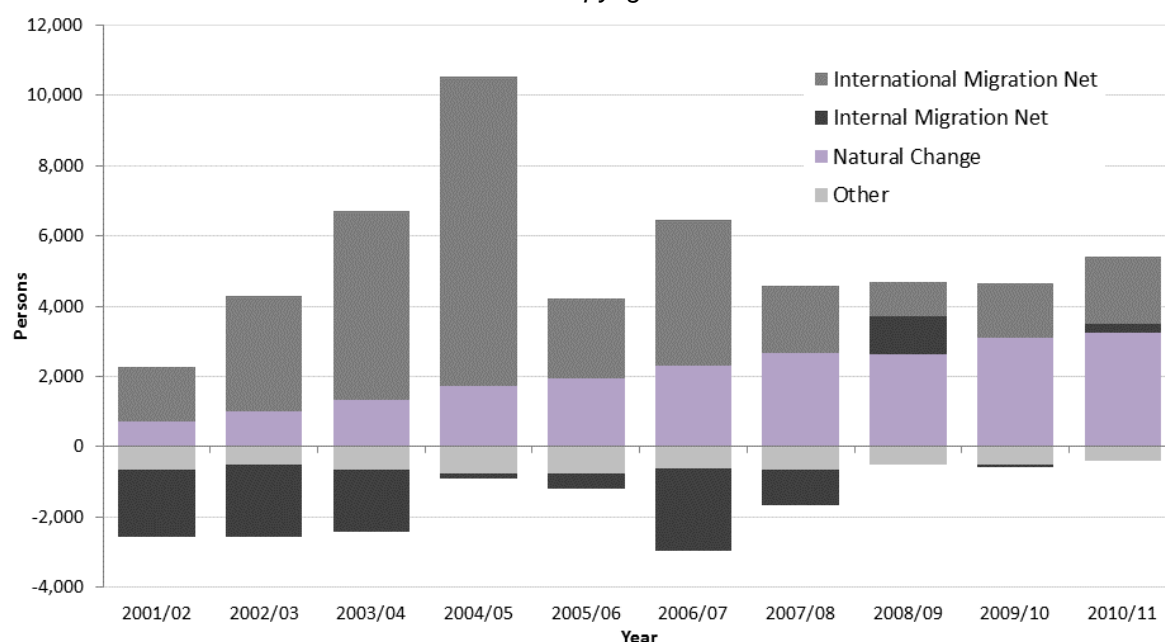
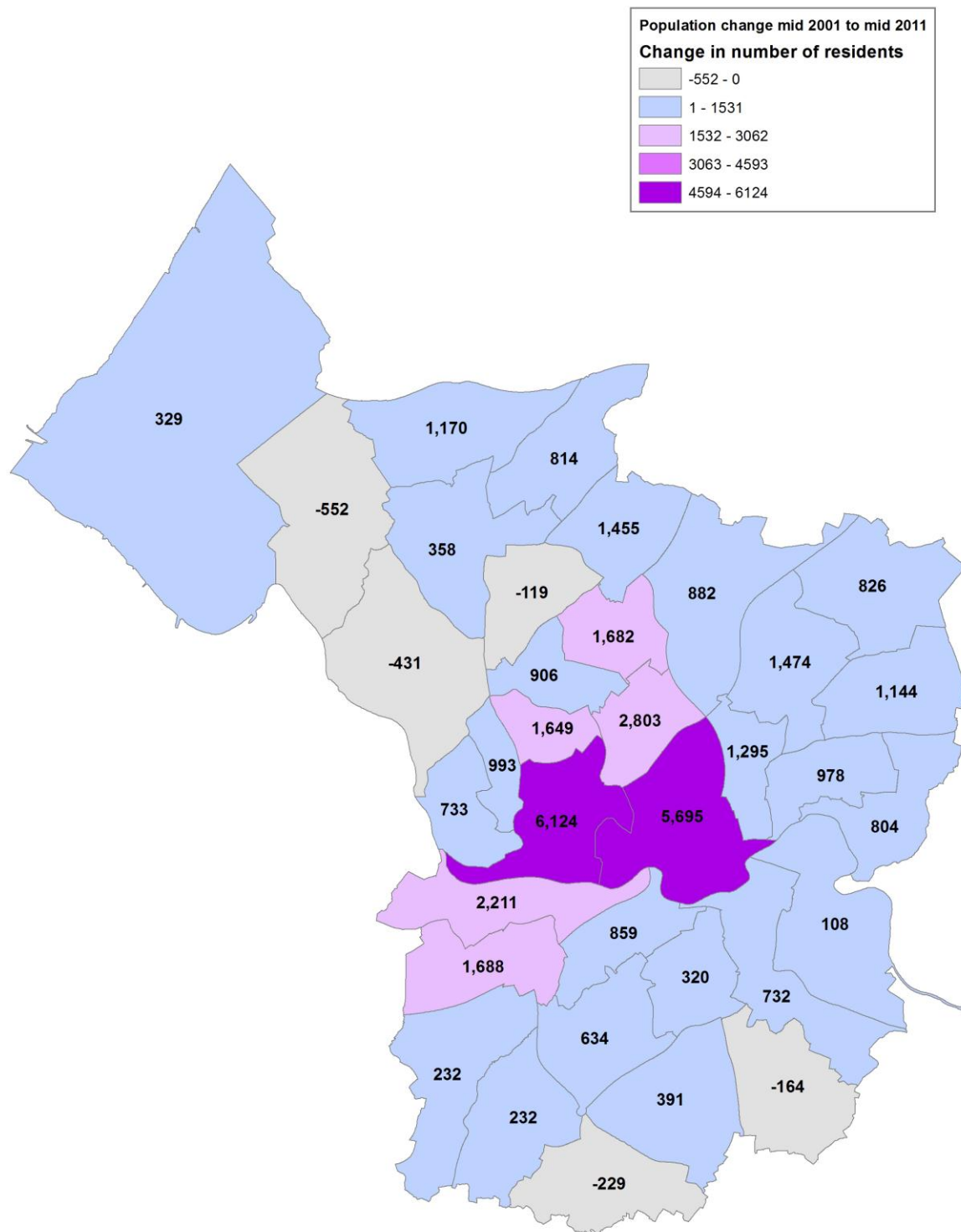


Figure 3: Population change mid-2001 to mid-2011 by ward

Source: Office for National Statistics © Crown Copyright 2013.



Source: ONS Experimental Statistics © Crown Copyright
Supplied by Strategic Planning, Bristol City Council
© Crown Copyright and database right 2013.
Ordnance Survey 100023406

Whilst there have been significant estimated increases in population across many wards in Bristol between 2001 and 2011, there has been exceptional increases in Cabot of 6,100 (62.2%) people and Lawrence Hill of 5,700 (43.2%) people. Other wards which have experienced large increases in the population since 2001 are Ashley 2,800 (20.9%), Southville 2,200 (21.5%), Bedminster 1,700 (15.7%), Bishopston 1,700 (13.8%) and Cotham 1,600 (15.1%). At the same time there has also been decreasing populations in Henleaze, Stockwood, Whitchurch Park, Stoke Bishop and Kingsweston wards. Figure 3 illustrates the distribution of population change across Bristol between 2001 and 2011.

4. Ethnic group

The Black or Minority Ethnic group (BME) population (all groups with the exception of all the White groups) make up 16% of the total population in Bristol. This is an increase from 8.2% of all people in 2001.

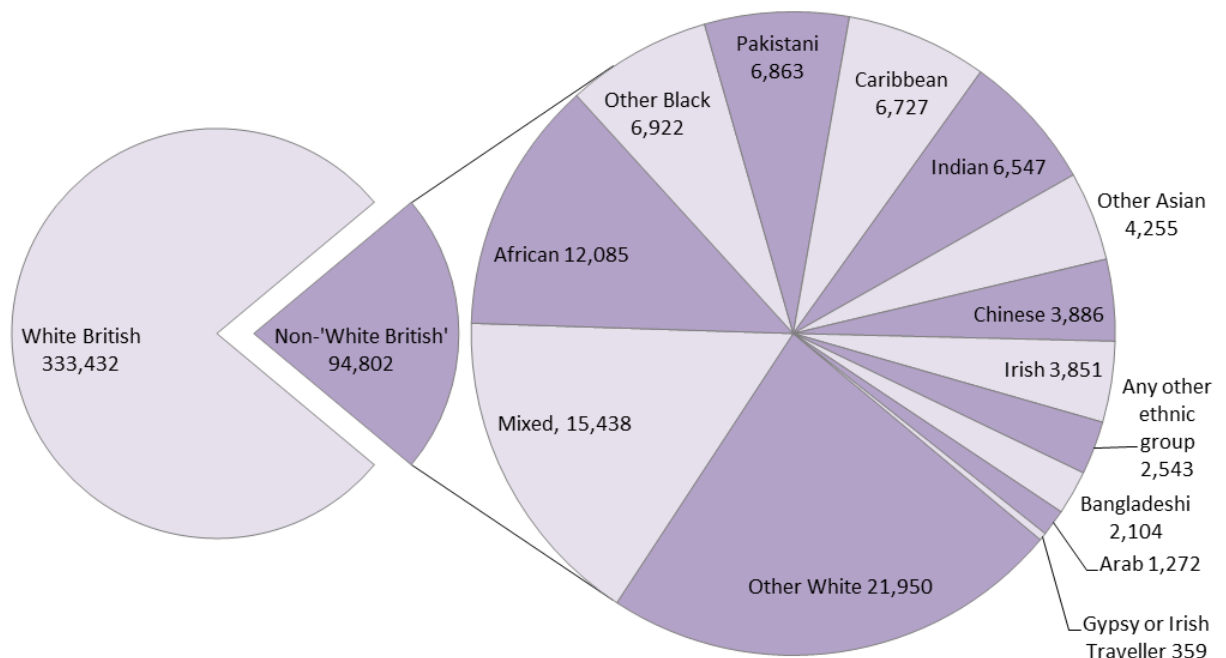
The non-'White British' population (all groups with the exception of White British) make up 22% of the total population in Bristol. This is an increase from 12% of all people in 2001.

The largest increases since 2001 have been in Other White, Black African, Black Other and Multiple/mixed ethnic groups. These changes reflect the large growth in the Somali and the Polish populations in Bristol.

The BME population varies significantly across the city (see Figure 6) - in Lawrence Hill ward 55% of all people belong to a BME group compared to 4% in Whitchurch Park. This difference is emphasised even more when looking at areas smaller than wards – in 'St Pauls Grosvenor Road' 80% of all people belong to a BME group whilst just 1.4% are BME in 'The Coots' in Stockwood.

Figure 4: Population by ethnic group

Source: ONS © Crown Copyright 2013. ONS Crown Copyright Reserved [from Nomis]



Since 2001, the distribution of the BME population of Bristol has changed considerably - figure 6 maps the percentage of people who belong to a BME group by ward both in 2001 and in 2011. Whilst in 2001 the BME population largely lived in the inner city wards of Ashley, Easton, Lawrence Hill and Eastville, with all other wards having a BME population of below 14%, in 2011 the distribution of the BME

population had extended out to the north east of the city. Now wards with a BME population of above 14% include Lawrence Hill, Easton, Ashley, Eastville, Lockleaze, Cabot, Hillfields, St George West, Frome Vale, Horfield and Southmead.

Figure 5: Population by ethnic group

Source: ONS © Crown Copyright 2013. ONS Crown Copyright Reserved [from Nomis]

	Bristol	%	E&W%
White British	333,432	77.9	80.5
Other White	21,950	5.1	4.4
Mixed/multiple ethnic group	15,438	3.6	2.2
Black African	12,085	2.8	1.8
Other Black	6,922	1.6	0.5
Pakistani	6,863	1.6	2.0
Black Caribbean	6,727	1.6	1.1
Indian	6,547	1.5	2.5
Other Asian	4,255	1.0	1.5
Chinese	3,886	0.9	0.7
White Irish	3,851	0.9	0.9
Any other ethnic group	2,543	0.6	0.6
Bangladeshi	2,104	0.5	0.8
Arab	1,272	0.3	0.4
White Gypsy or Irish Traveller	359	0.1	0.1
Total White	359,592	84.0	86.0
Total Black and minority ethnic groups	68,642	16.0	14.0
All people	428,234	100.0	100.0

Somali population estimate

The Somali population are not identified as a separate ethnic group in the 2011 Census but are included in both the Black African and Black Other groups, depending on which tick box people chose on the Census questionnaire.

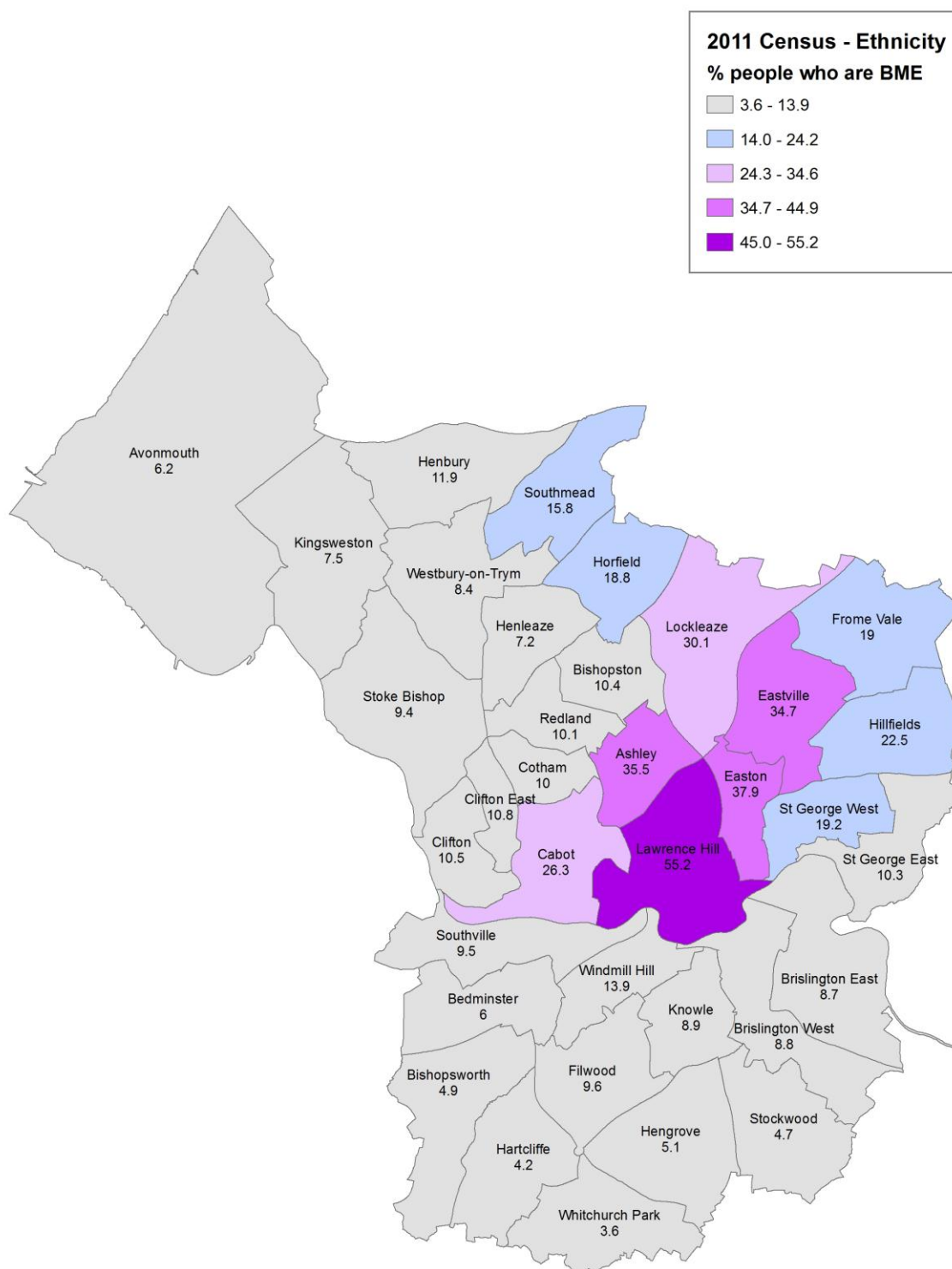
The best estimate we can make of the number of Somalis living in Bristol is to take the number of Black Africans and Black Others who identified themselves as Muslims and to then subtract those Muslims born in parts of Africa outside Eastern Africa. This gives us a Somali population estimate of 8,100.

Local knowledge suggests that it is likely that some Somalis, in particular men living in informal accommodation, may have been under estimated by the 2011 Census. Taking this into consideration, the likely number of Somalis living in Bristol in 2011 could be around 10,000.

Figure 6: Black and Minority ethnic group population by ward – 2001 and 2011

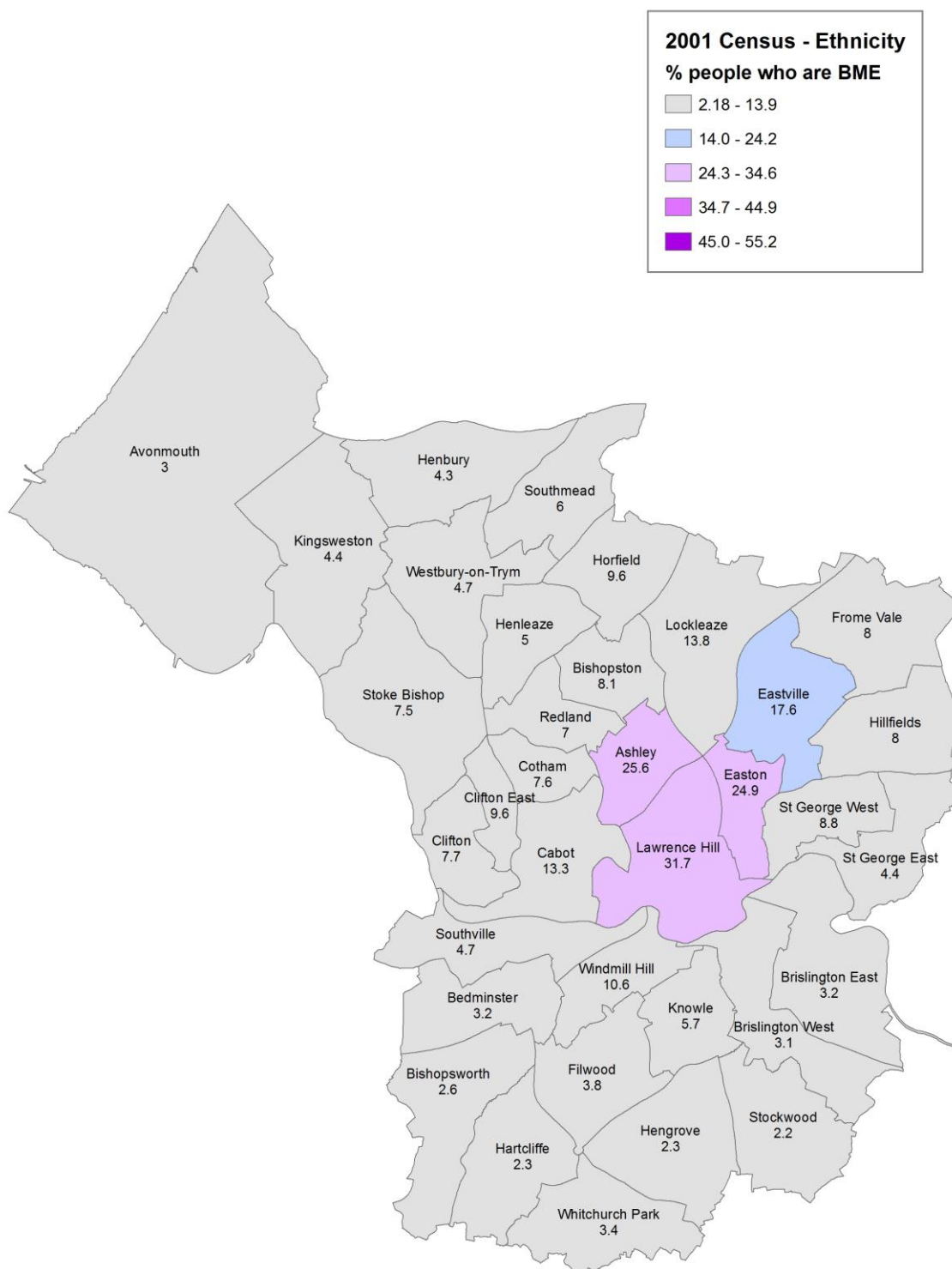
Source: ONS © Crown Copyright 2013. ONS Crown Copyright Reserved [from Nomis]

2011 Map



Produced by Strategic Planning, Bristol City Council
Source: Office for National Statistics © Crown Copyright 2013.
ONS Crown Copyright Reserved [from Nomis on 4 February 2013]
©Crown Copyright and database rights 2013. Ordnance Survey 100023406.

2001 Map



Produced by Strategic Planning, Bristol City Council
 Source: Office for National Statistics © Crown Copyright 2013.
 ONS Crown Copyright Reserved [from Nomis on 4 February 2013]
 ©Crown Copyright and database rights 2013. Ordnance Survey 100023406.

5. Religion

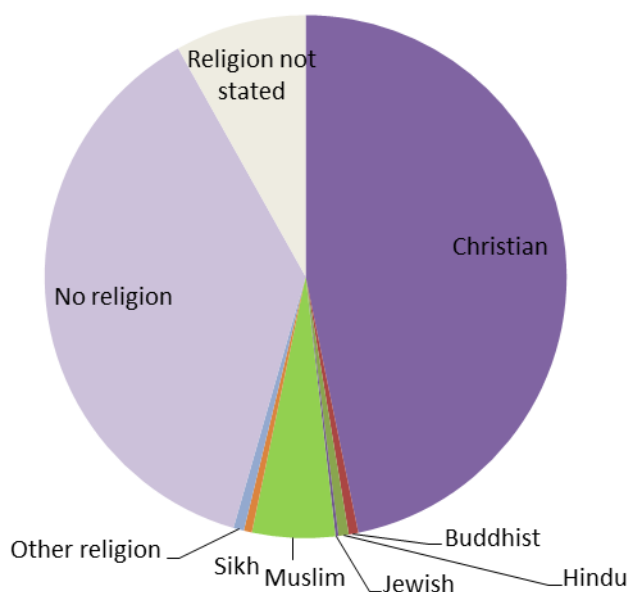
There are at least 45 religions represented in Bristol (see Figure 8). The largest religion is Christian (47%), although following national trends the proportion of people stating that they are Christian has fallen from 62% of all people living in Bristol in 2001.

Bristol is ranked 7th in England and Wales for the proportion of people stating that they have no religion - 37% of the population state they have no religion, up from 25% in 2001.

Since 2001 the religion to increase the most in Bristol has been the Muslim religion which increased from 2% of all people in Bristol in 2001 to 5% of all people in 2011 (see Figure 9).

Figure 7: Population by religion

Source: ONS © Crown Copyright 2013. ONS Crown Copyright Reserved [from Nomis]



	Bristol	%	E&W%
Total population	428,234	100.0	100.0
Christian	200,254	46.8	59.3
Buddhist	2,549	0.6	0.4
Hindu	2,712	0.6	1.5
Jewish	777	0.2	0.5
Muslim	22,016	5.1	4.8
Sikh	2,133	0.5	0.8
Other religion	2,793	0.7	0.4
No religion	160,218	37.4	25.1
Religion not stated	34,782	8.1	7.2

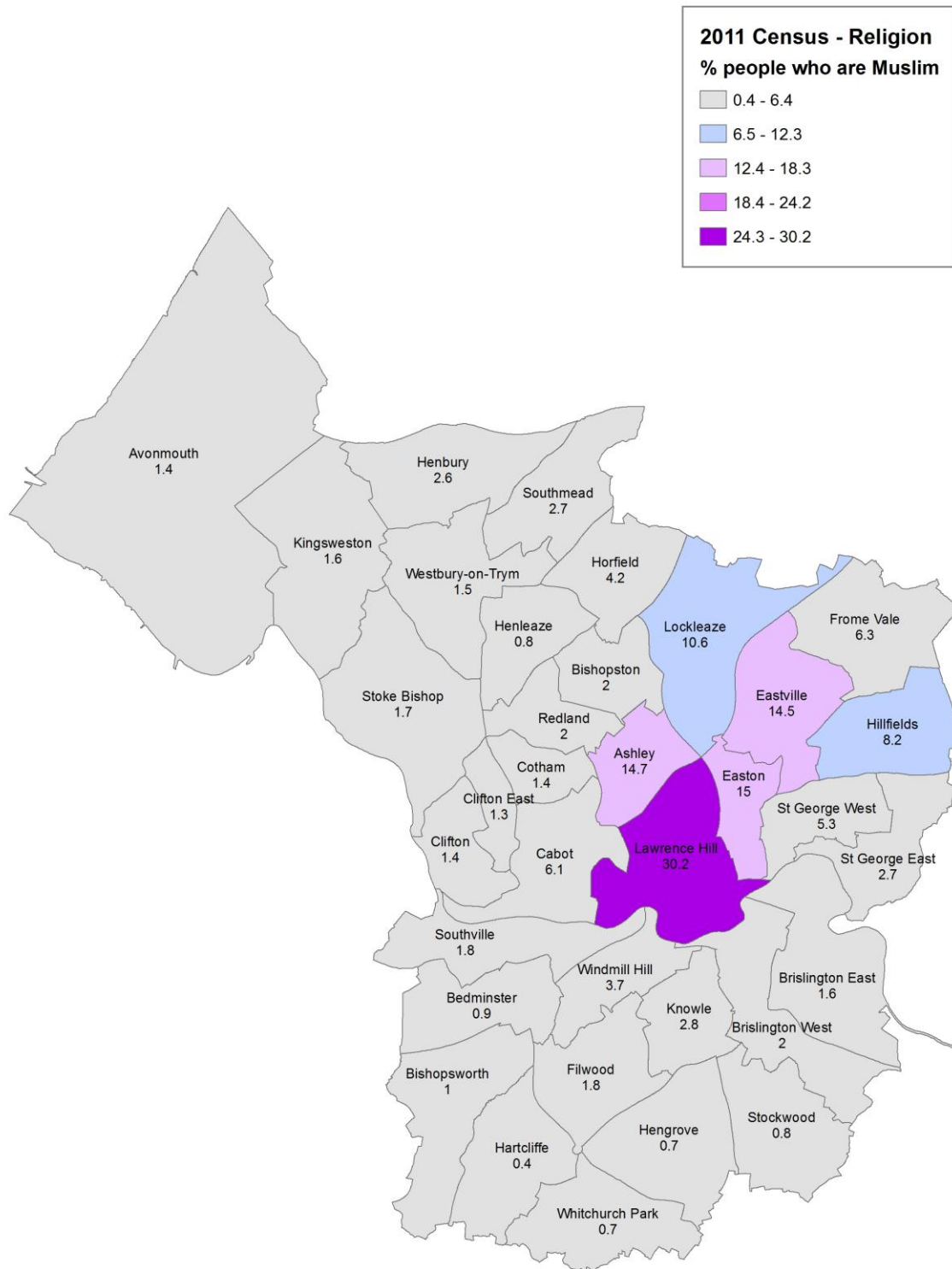
Figure 8: Number of people by religion in Bristol

Source: ONS © Crown Copyright 2013. ONS Crown Copyright Reserved [from Nomis]

Religions stated:			
Christian	200,254	Shamanism	17
Muslim (Islam)	22,016	Occult	15
Hindu	2,712	New Age	13
Buddhist	2,549	Traditional African Religion	13
Sikh	2,133	Scientology	12
Jewish	777	Shintoism	11
Pagan	575	Theism	11
Mixed Religion	415	Deist	10
Spiritualist	376	Universalist	9
Spiritual	269	Witchcraft	7
Rastafarian	243	Animism	5
Other religions	189	Reconstructionist	5
Wicca	99	Church of All Religion	4
Baha'i	83	Ravidassia	4
Taoist	81	Thelemite	4
Believe in God	80	Eckankar	3
Druid	47	Native American Church	3
Pantheism	44	Vodun	2
Own Belief System	34	Brahma Kumari	1
Satanism	34	Confucianist	1
Jain	30	Mysticism	1
Heathen	21	Unification Church	1
Zoroastrian	21		
No religion (total)	160,218		
No religion	156,666	Humanist	190
Jedi Knight	2,310	Heavy Metal	61
Agnostic	506	Free Thinker	5
Atheist	476	Realist	4
Religion not stated	34,782		

Figure 9: Muslim population by ward

Source: ONS © Crown Copyright 2013. ONS Crown Copyright Reserved [from Nomis]



Produced by Strategic Planning, Bristol City Council
 Source: Office for National Statistics © Crown Copyright 2013.
 ONS Crown Copyright Reserved [from Nomis on 4 February 2013]
 ©Crown Copyright and database rights 2013. Ordnance Survey 100023406.

6. Country of Birth

There are at least 50 countries represented in Bristol (see Figure 12). 15% of the people living in Bristol were born outside the UK, this is an increase since 2001 when the proportion of people born outside the UK was 8%.

Lawrence Hill ward has the highest proportion of people not born in the UK at 37% of the total population.

Figure 11 lists the most popular countries of birth (not including the UK). Poland is the most popular country of birth in Bristol followed by Somalia, India and Jamaica

Figure 10: Population by country of birth

Source: ONS © Crown Copyright 2013. ONS Crown Copyright Reserved [from Nomis]

	Bristol	%	E&W%
Total population	428,234	100.0	100.0
England	348,170	81.3	80.0
Northern Ireland	1,674	0.4	0.4
Scotland	4,784	1.1	1.3
Wales	10,382	2.4	4.9
United Kingdom not otherwise specified	98	0.0	0.0
Ireland	2,900	0.7	0.7
Other EU: Member countries in March 2001	9,166	2.1	1.6
Other EU: Accession countries April 2001 to March 2011	10,520	2.5	2.0
Other countries	40,540	9.5	9.0

Figure 11: Top 10 Countries of Birth (not including UK)

Source: ONS © Crown Copyright 2013. ONS Crown Copyright Reserved [from Nomis]

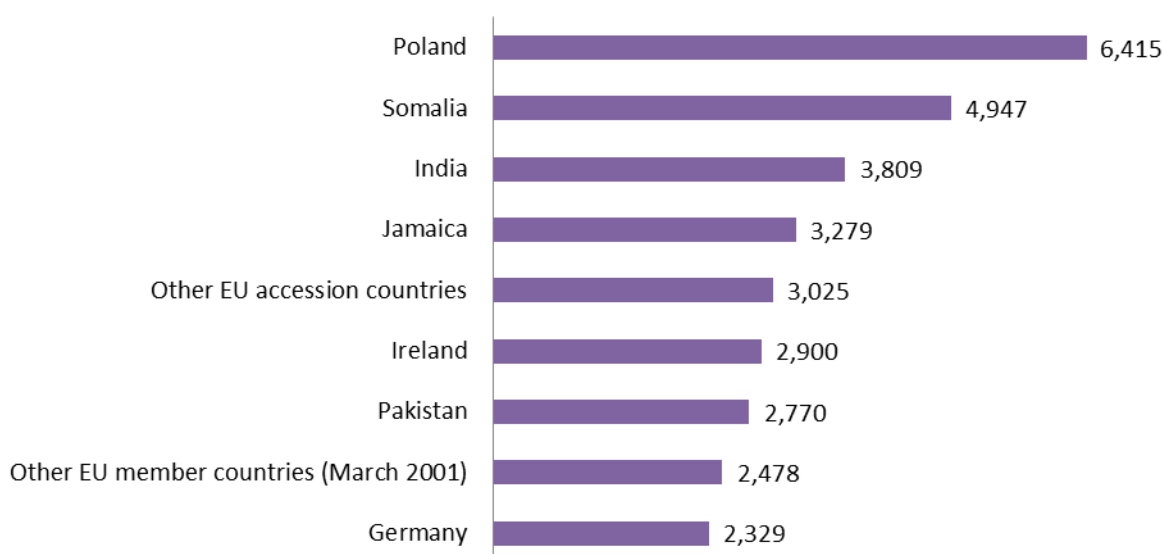
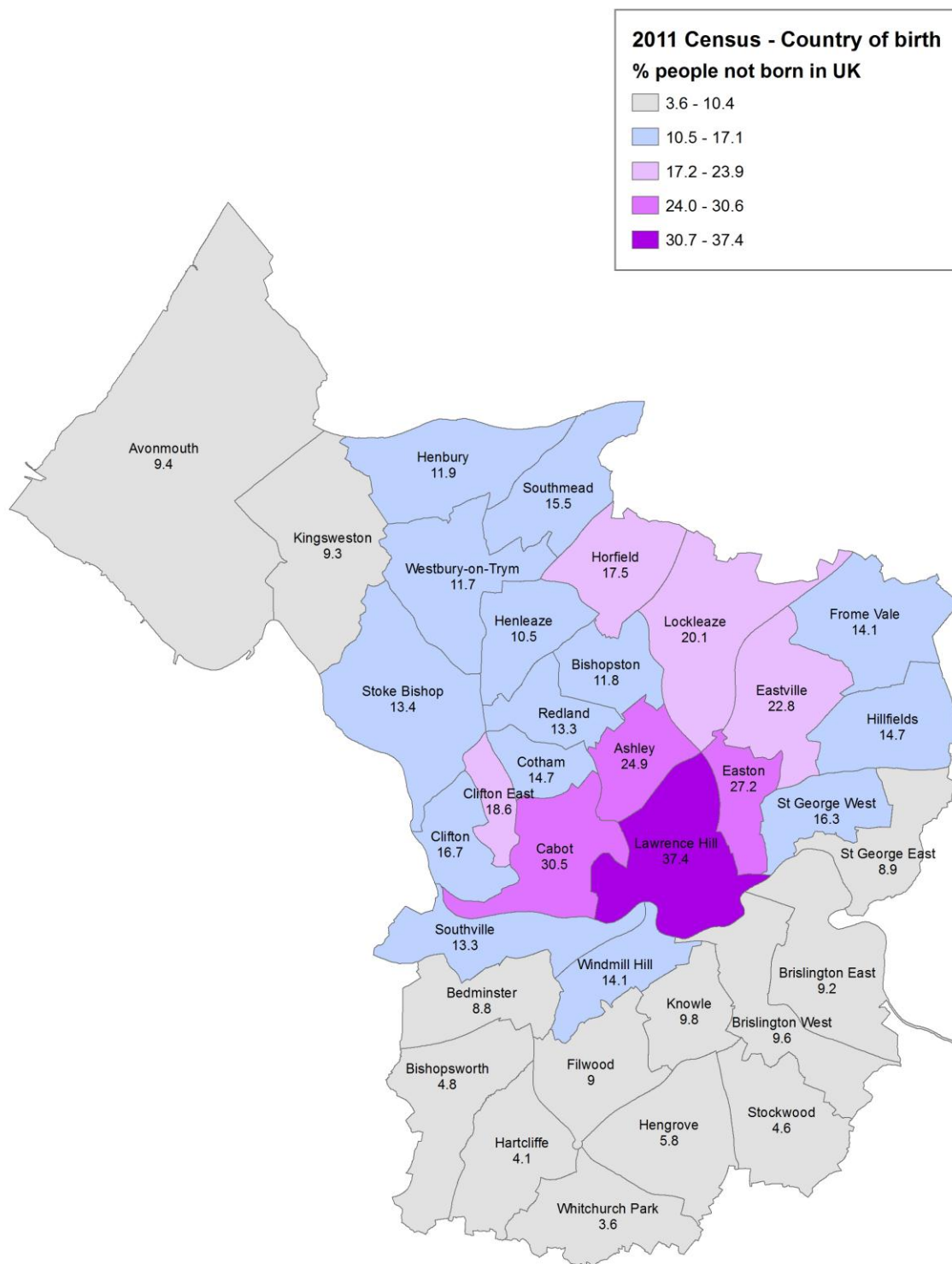


Figure 12: Number of people by country of birth represented in Bristol*Source: ONS © Crown Copyright 2013. ONS Crown Copyright Reserved [from Nomis]*

UK	365,108	Hong Kong	959
Poland	6,415	Zimbabwe	944
Somalia	4,947	Philippines	924
India	3,809	Other North America	812
Jamaica	3,279	Kenya	774
Other EU accession	3,025	Iran	638
Ireland	2,900	Romania	587
Pakistan	2,770	Other Eastern Asia	579
Other EU members (March 2001)	2,478	Other Caribbean	530
Germany	2,329	Lithuania	493
Other South-East Asia	2,065	Other Australasia	486
China	1,750	Portuga	469
Other Middle East	1,603	Turkey	413
France	1,458	Sri Lanka	382
South Africa	1,390	Ghana	329
United States	1,354	Other Southern Asia	307
Other South and Eastern Africa	1,346	Central America	163
Italy	1,322	Jersey	144
Other Europe	1,243	Guernsey	85
Nigeria	1,124	Isle of Man	79
Spain (including Canary Islands)	1,110	Africa not otherwise specified	70
South America	1,104	Other Oceania	60
Bangladesh	1,039	Central Asia	58
Australia	1,025	Channel Islands other	22
North Africa	972	Antarctica	0
Other Central & Western Africa	962	Other	0

Figure 13: Population not born in the UK by ward

Source: ONS © Crown Copyright 2013. ONS Crown Copyright Reserved [from Nomis]



Produced by Strategic Planning, Bristol City Council
 Source: Office for National Statistics © Crown Copyright 2013.
 ONS Crown Copyright Reserved [from Nomis on 4 February 2013]
 ©Crown Copyright and database rights 2013. Ordnance Survey 100023406.

7. Migrants

For the first time in 2011, the census asked a series of questions about migration, including a question about when people migrated to the UK. Of the people living in Bristol not born in the UK, the majority (60%) have been resident in the UK for less than 10 years. Of the people not born in the UK, 69% arrived in the UK when they were of working age and 30% arrived as children.

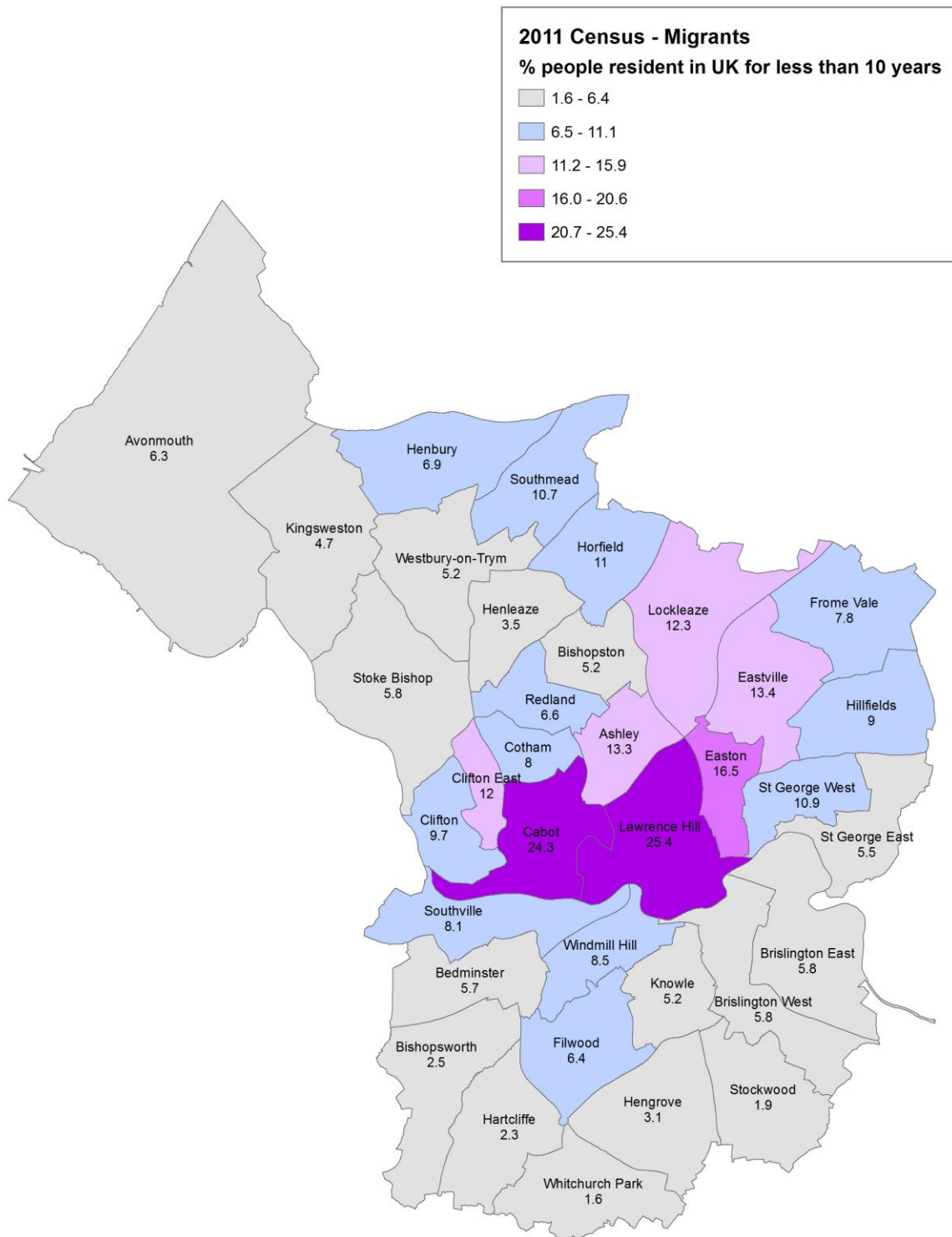
Figure 14: Length of residence in the UK

Source: ONS © Crown Copyright 2013. ONS Crown Copyright Reserved [from Nomis]

	Bristol	%	E&W%
Born in the UK	365,108	85.3	86.6
Resident in UK: Less than 2 years	9,610	2.2	1.7
Resident in UK: 2 years or more but less than 5 years	12,256	2.9	2.1
Resident in UK: 5 years or more but less than 10 years	16,262	3.8	2.8
Resident in UK: 10 years or more	24,998	5.8	6.8
Total population	428,234	100.0	100.0

Figure 15: Population who have been resident in the UK for less than 10 years by ward

Source: ONS © Crown Copyright 2013. ONS Crown Copyright Reserved [from Nomis]



Produced by Strategic Planning, Bristol City Council
 Source: Office for National Statistics © Crown Copyright 2013.
 ONS Crown Copyright Reserved [from Nomis on 4 February 2013]
 ©Crown Copyright and database rights 2013. Ordnance Survey 100023406.

8. Language

For the first time in 2011, the census asked a question about main language spoken and proficiency in English. This found that there are at least 91 main languages spoken in Bristol (see Figure 19).

English is the main language spoken followed by Polish and then Somali – this is illustrated by Figures 17 and 18 whereby the size of the text represents the number of people who speak that language as their main language. Overall 9% of people do not speak English as their main language.

Figure 16: Main language spoken

Source: ONS © Crown Copyright 2013. ONS Crown Copyright Reserved [from Nomis]

	Bristol	%	E&W%
All usual residents aged 3 and over	409,698	100.0	100.0
English	374,709	91.5	92.3
Not English	34,984	8.5	7.7

Figure 17: Illustration of numbers of speakers by main language – English and non-English speakers



Figure 18: Illustration of numbers of speakers by main language not including English speakers

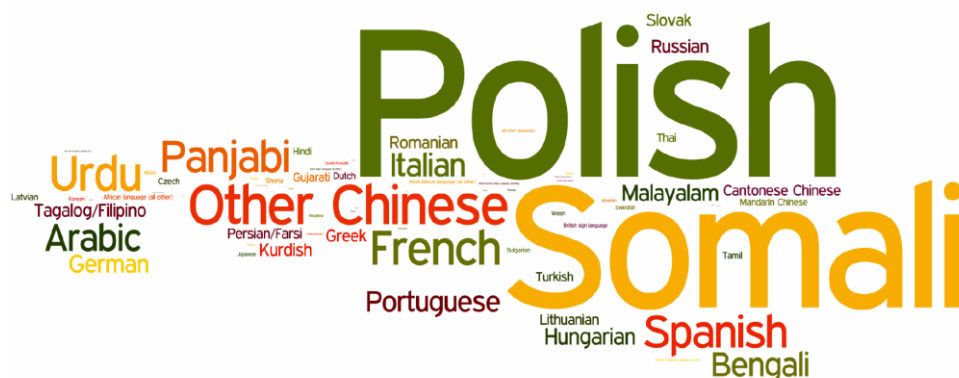


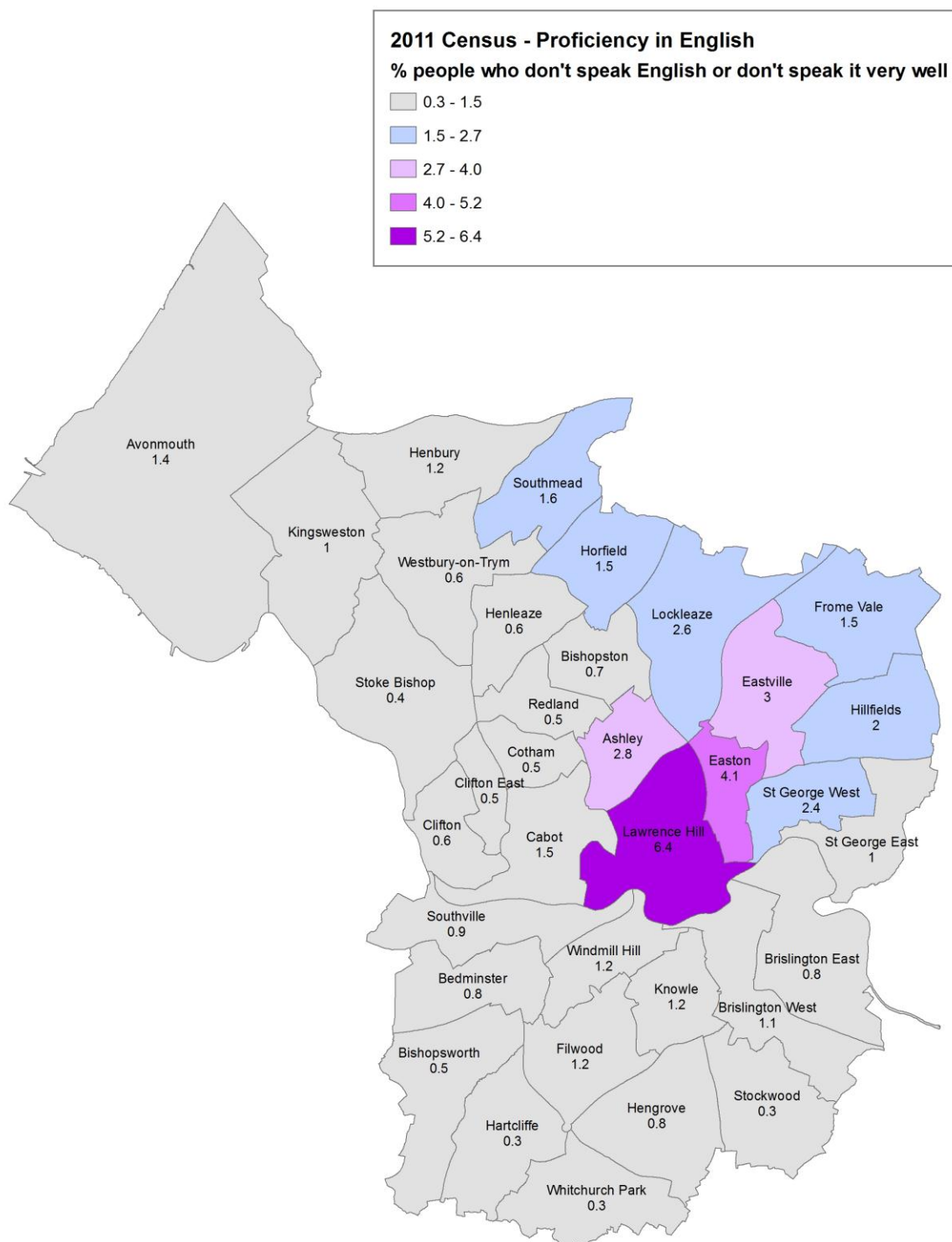
Figure 19: Number of people by main language spoken in Bristol

Source: ONS © Crown Copyright 2013. ONS Crown Copyright Reserved [from Nomis]

English	374,709	Nepalese	115
Polish	6,080	Swahili/Kiswahili	104
Somali	5,004	Vietnamese	95
All other Chinese	1,619	Finnish	93
Urdu	1,432	Northern European Language (non EU)	84
French	1,403	Sinhala	84
Spanish	1,329	Yoruba	84
Panjabi	1,306	Pashto	83
Arabic	1,103	West/Central Asian Language (all other)	73
Bengali (with Sylheti & Chatgaya)	983	East Asian Language (all other)	72
Italian	964	Afrikaans	67
Portuguese	850	Telugu	59
German	732	Any other European Language (EU)	55
Hungarian	664	Danish	54
Malayalam	663	Serbian/Croatian/Bosnian	47
Russian	536	Akan	47
Tagalog/Filipino	531	Tigrinya	46
Kurdish	516	Any other Nigerian language	42
Romanian	503	Marathi	39
Greek	494	Ukrainian	35
Slovak	493	Gypsy/Traveller languages	34
Cantonese Chinese	437	Hebrew	32
Lithuanian	429	Luganda	29
Persian/Farsi	417	Any Sign Communication System	27
Turkish	379	Igbo	25
Gujarati	353	Krio	24
Thai	347	Amharic	23
Hindi	288	Sign Language (all other)	21
Dutch	278	Maltese	19
Mandarin Chinese	275	Estonian	18
Tamil	273	Lingala	18
Latvian	270	Slovenian	15
Czech	251	Gaelic (Irish)	12
Shona	204	Pakistani Pahari (with Mirpuri and Potwari)	12
African language (all other)	186	Scots	8
Bulgarian	184	Caribbean Creole (English-based)	8
Swedish	173	Oceanic/Australian language (any)	5
Welsh	165	Any other E. European Language (non EU)	4
Korean	164	Romani language (any)	4
Malay	153	Gaelic (Not otherwise specified)	1
British sign language	153	Cornish	1
West African language (all other)	147	Yiddish	1
South Asian Language (all other)	146	North/South American language (any)	1
Japanese	139	Caribbean Creole (all other)	1
Albanian	128		

Figure 20: Population who do not speak English or do not speak English very well by ward

Source: ONS © Crown Copyright 2013. ONS Crown Copyright Reserved [from Nomis]



Produced by Strategic Planning, Bristol City Council
 Source: Office for National Statistics © Crown Copyright 2013.
 ONS Crown Copyright Reserved [from Nomis on 4 February 2013]
 ©Crown Copyright and database rights 2013. Ordnance Survey 100023406.

Proficiency in English is categorised into people who can speak English very well, those who can speak English well, those who cannot speak English well and those who cannot speak English. Overall in Bristol 1.5% of people cannot speak English or cannot speak English very well. Figure 20 shows the distribution across Bristol.

Interestingly, although there is a high proportion of people whose main language is not English living in Cabot ward (19.3%), there is a very low proportion of those who do not speak English or do not speak it well (1.5%). This reflects the high proportion of foreign students living in the ward.

9. Quality of Life – community cohesion indicators

The following five indicators have been measured in the Quality of Life annual residents' satisfaction survey for the past eight years. Each indicator also includes a graphical interpretation with a map, graphs and figures for wards and equalities groups.

% respondents who feel they belong to their neighbourhood 😐

This indicator fell for the first time in seven years from 64% in 2011 to 60% in 2012, but is still a significant improvement from the figure in 2006 when it measured 57%. The ward pattern across the city has been similar each year, with the highest sense of belonging in the west/northwest (particularly Stoke Bishop, Westbury-on-Trym, Henleaze, Bishopston, Redland, Clifton and Southville) plus Ashley in the Inner City (all 67% or above in 2012). Hillfields (43% in 2012), Lawrence Hill (49% in 2012) and Henbury (51% in 2012) have tended to be the wards with the lowest percentages of respondents 'who feel they belong to their neighbourhood'. The indicator was also significantly lower in deprived areas of the city (52%).

Equalities analysis indicated significantly more of the older people (67%) had a higher sense of belonging. Fewer people who said they had 'no faith' felt they belonged to their neighbourhood (56%). This pattern was the same as in 2011.

Further analysis (not shown) suggests that significant predictors for having a sense of belonging to the neighbourhood are age, having a Black or minority ethnicity, living in a deprived area and housing tenure. Attachment to the local area increases with age, from 43% of people in their twenties to 77% of those aged seventy or over. Black and minority ethnic groups are more likely to say they 'feel they belong to their neighbourhood' (66%). Living in a rented accommodation appears to lessen the feeling of investment in the neighbourhood (53% of people living in social housing; 48% of people privately renting). There is some weaker evidence that people with lower educational qualifications and men are less likely to feel that they belong to their local area.

% respondents who agree people from different backgrounds get on well together 😊

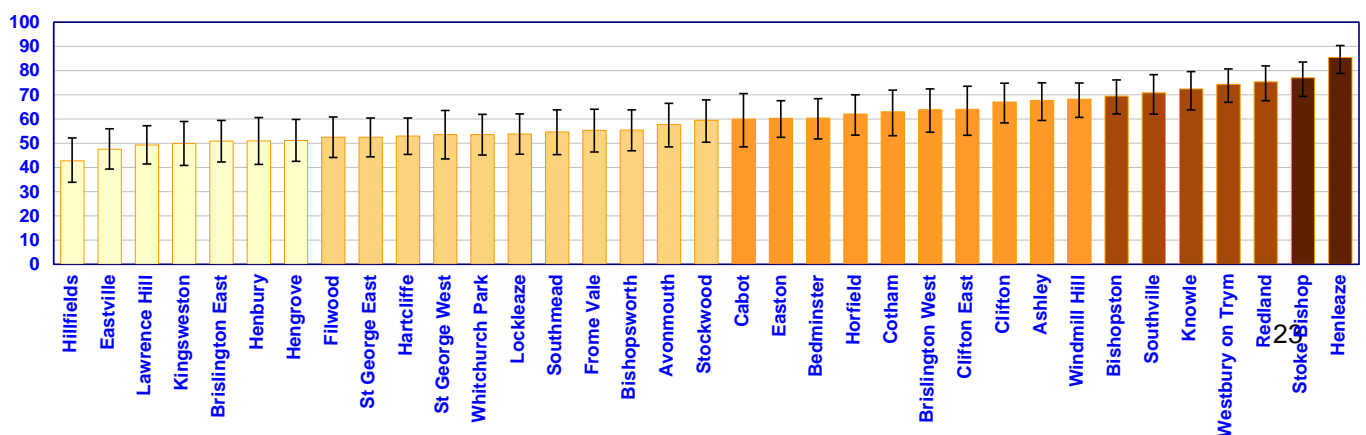
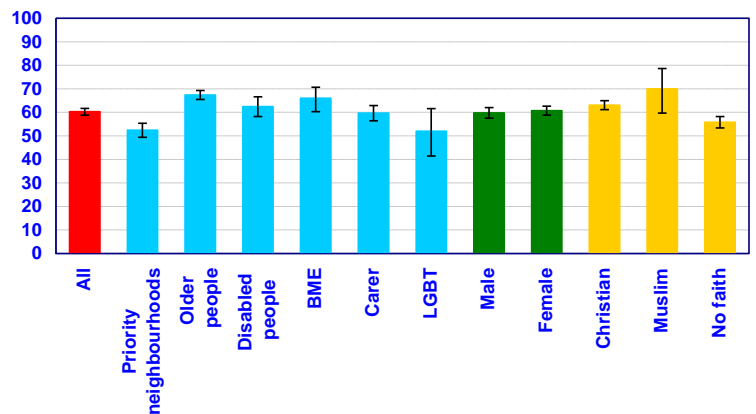
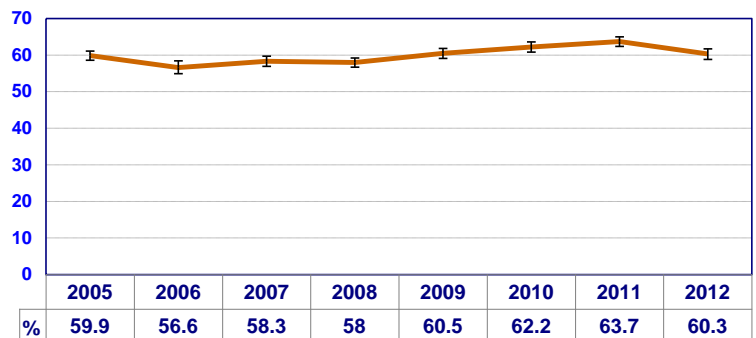
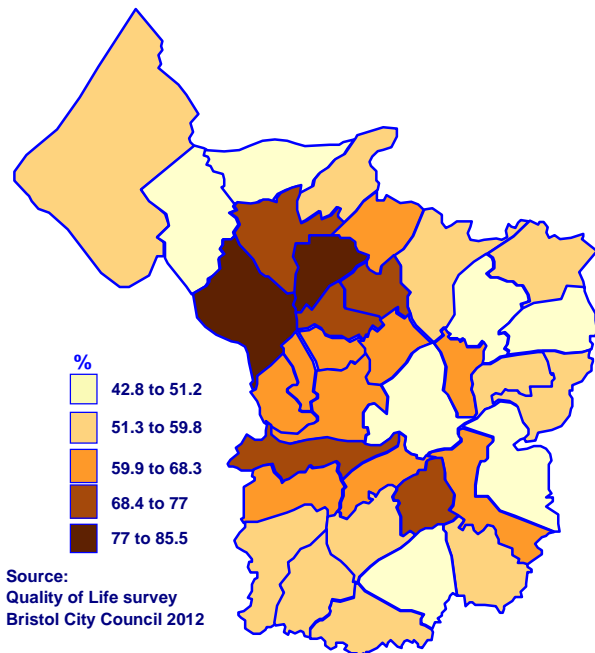
This indicator improved from 53% in 2005 to 59% in 2008 and remained at this level, measuring 60% in 2012.

The ward pattern has been similar in recent years. Ashley, Bishopston, Henleaze and Redland usually have some of the highest values of the indicator (at least 74% in 2012), and deprived areas record the lowest (52%). In Hillfields the proportion of residents who agree that 'people from different backgrounds get on well together' rose from 35% in 2011 to 55% in 2012.

Further analysis (not shown) suggests that more Black and minority ethnic residents (67%), people aged seventy and over (66%) and respondents with higher educational qualifications thought people in their neighbourhood got on well together.

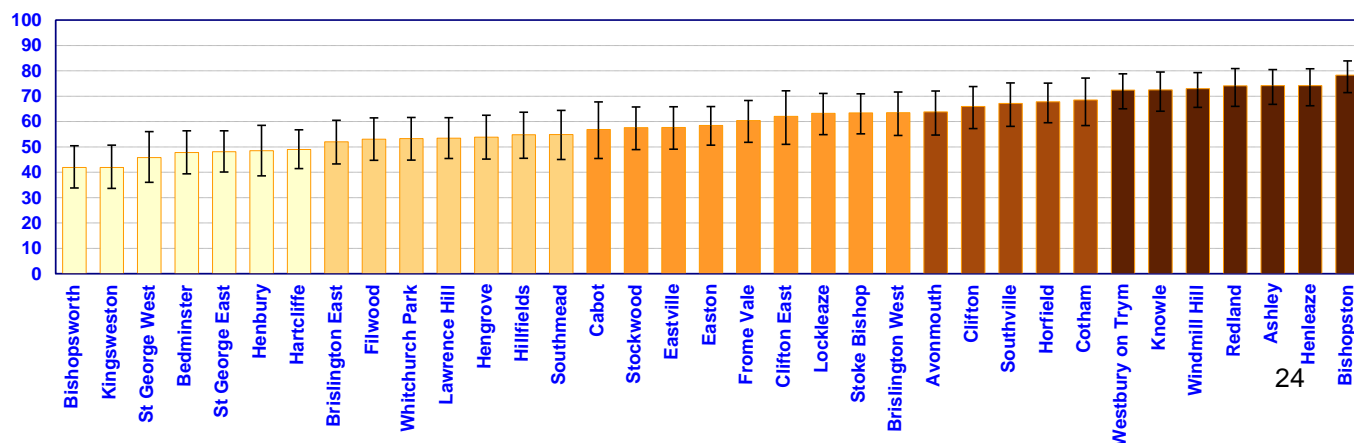
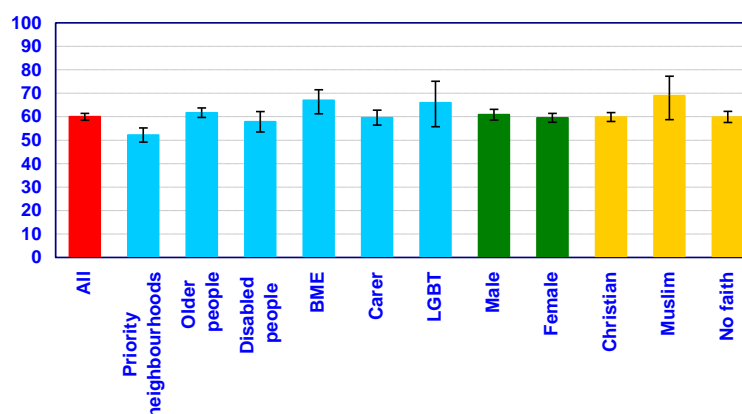
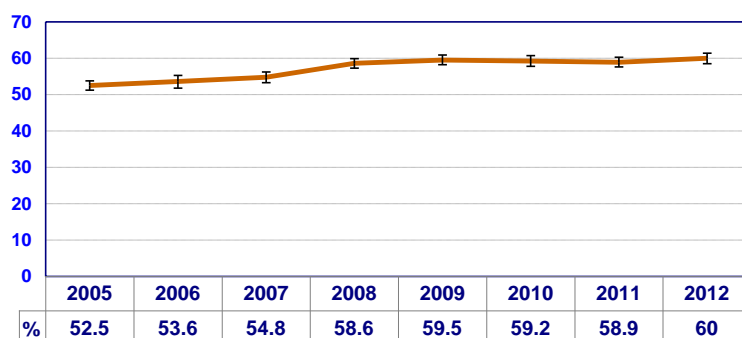
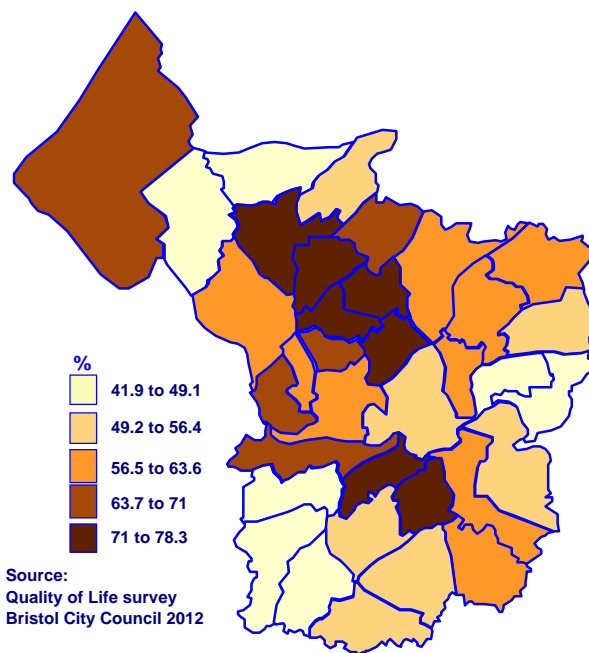
% respondents who feel they belong to neighbourhood

Ward	%	lower confidence limit	upper confidence limit
Ashley	68	59.4	75.0
Avonmouth	58	48.5	66.5
Bedminster	60	51.8	68.4
Bishopston	70	62.1	76.1
Bishopsworth	56	46.9	63.8
Brislington East	51	42.3	59.4
Brislington West	64	54.5	72.4
Cabot	60	48.5	70.5
Clifton	67	58.4	74.8
Clifton East	64	53.3	73.5
Cotham	63	53.1	71.9
Easton	60	52.4	67.6
Eastville	48	39.3	56.0
Filwood	53	44.1	60.8
Frome Vale	55	46.4	64.0
Hartcliffe	53	45.4	60.4
Henbury	51	41.3	60.6
Hengrove	51	42.5	59.8
Henleaze	86	78.8	90.3
Hillfields	43	33.9	52.2
Horfield	62	53.4	70.0
Kingsweston	50	40.8	59.0
Knowle	72	63.8	79.6
Lawrence Hill	49	41.4	57.2
Lockleaze	54	45.5	62.1
Redland	75	67.6	81.9
Southmead	55	45.3	63.8
Southville	71	62.0	78.3
St George East	53	44.4	60.4
St George West	54	43.5	63.5
Stockwood	60	50.4	67.9
Stoke Bishop	77	69.3	83.5
Westbury-on-Trym	74	66.9	80.7
Whitchurch Park	54	45.1	61.9
Windmill Hill	68	60.7	74.9
BRISTOL	60.3	58.8	61.7
Question number	6g		
Sample size	4706		
Year	2012		
Priority neighbourhoods	52.4	49.4	55.4
Older people	67.4	65.5	69.3
Disabled people	62.5	58.2	66.6
BME	66	60.3	70.7
Carer	60	56.4	62.9
LGBT	52	41.4	61.6
Male	59.8	57.5	62.0
Female	60.7	58.8	62.6
Christian	63.1	61.2	65.0
Muslim	70	59.7	78.6
No faith	55.8	53.4	58.2



% respondents who agree people from different backgrounds get on well together

Ward	%	lower confidence limit	upper confidence limit
Ashley	74	66.8	80.5
Avonmouth	64	54.7	72.0
Bedminster	48	39.4	56.3
Bishopston	78	71.4	83.9
Bishopsworth	42	33.8	50.4
Brislington East	52	43.3	60.5
Brislington West	64	54.5	71.6
Cabot	57	45.4	67.7
Clifton	66	57.2	73.8
Clifton East	62	51.0	72.1
Cotham	69	58.4	77.1
Easton	59	50.7	65.9
Eastville	58	49.1	65.8
Filwood	53	44.7	61.4
Frome Vale	60	51.8	68.3
Hartcliffe	49	41.4	56.7
Henbury	49	38.6	58.5
Hengrove	54	45.2	62.5
Henleaze	74	66.2	80.8
Hillfields	55	45.5	63.7
Horfield	68	59.5	75.1
Kingsweston	42	33.6	50.7
Knowle	73	64.1	79.5
Lawrence Hill	54	45.4	61.5
Lockleaze	63	54.8	71.1
Redland	74	66.0	80.9
Southmead	55	45.0	64.4
Southville	67	58.1	75.2
St George East	48	40.1	56.3
St George West	46	36.0	56.0
Stockwood	58	48.9	65.7
Stoke Bishop	63	55.1	70.9
Westbury-on-Trym	72	65.0	78.8
Whitchurch Park	53	44.8	61.6
Windmill Hill	73	65.6	79.3
BRISTOL	60.0	58.5	61.4
Question number	6c		
Sample size	4682		
Year	2012		
Priority neighbourhoods	52.2	49.2	55.2
Older people	61.7	59.7	63.7
Disabled people	57.9	53.5	62.2
BME	67	61.2	71.5
Carer	60	56.4	62.8
LGBT	66	55.7	75.1
Male	60.9	58.6	63.1
Female	59.5	57.6	61.4
Christian	59.9	58.0	61.8
Muslim	69	58.7	77.3
No faith	59.9	57.5	62.3



% respondents who agree people treat other people with respect in their neighbourhood 😊

This indicator steadily increased from 57% in 2006 until 2010, when it measured 67%. This proportion remained unchanged in 2011 and 2012.

The indicator pattern is similar each year with a good deal of variation across the city, from 46% Filwood to 93% in Henleaze. Over the past seven years, the indicator has shown a significant improvement in Avonmouth, Brislington West, Lawrence Hill, Lockleaze and St George East. This improvement has narrowed the gap between deprived areas and the rest of the city. Still significantly fewer people (51%) in deprived areas agreed people treat each other with respect and consideration. Further analysis (not shown) suggests that people of Muslim faith (75%), people aged seventy and over (80%) and people with higher qualifications agreed people are treated with respect. People who live in social housing and carers (62%) are less likely to agree that people are treated with respect.

% respondents who feel they can influence decisions in their local neighbourhood 😐

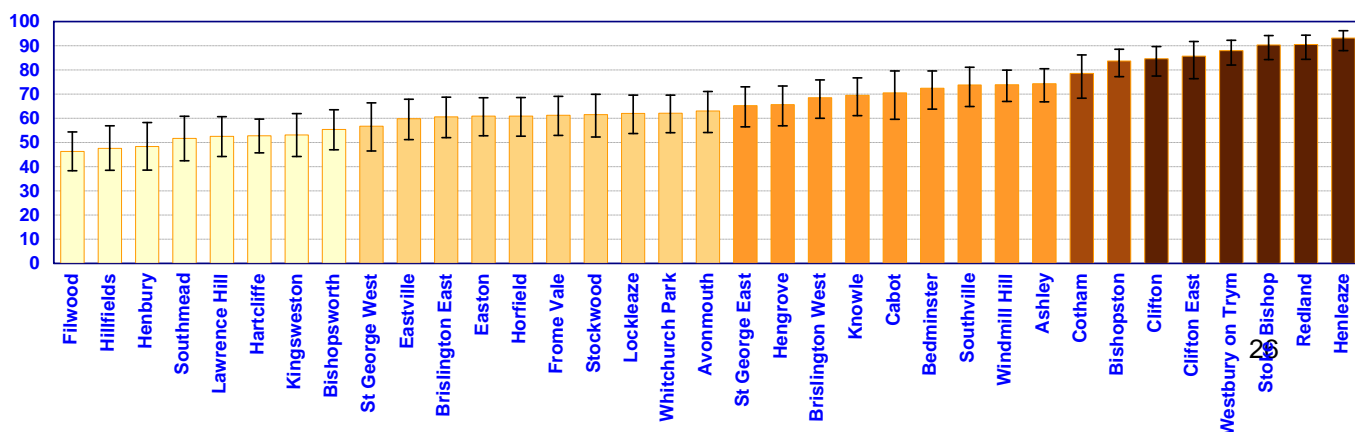
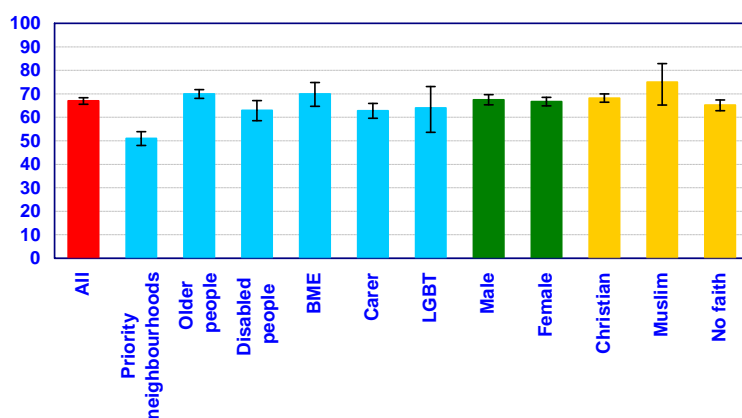
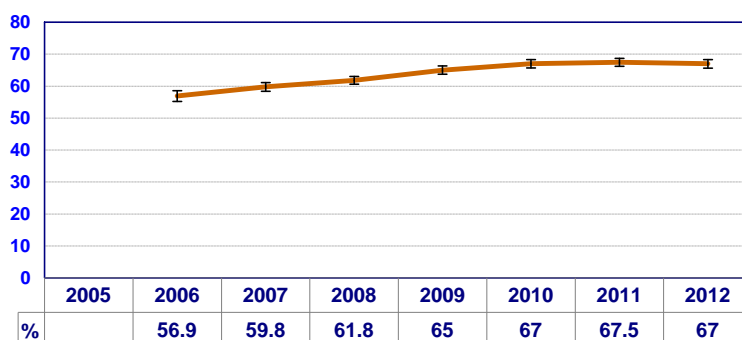
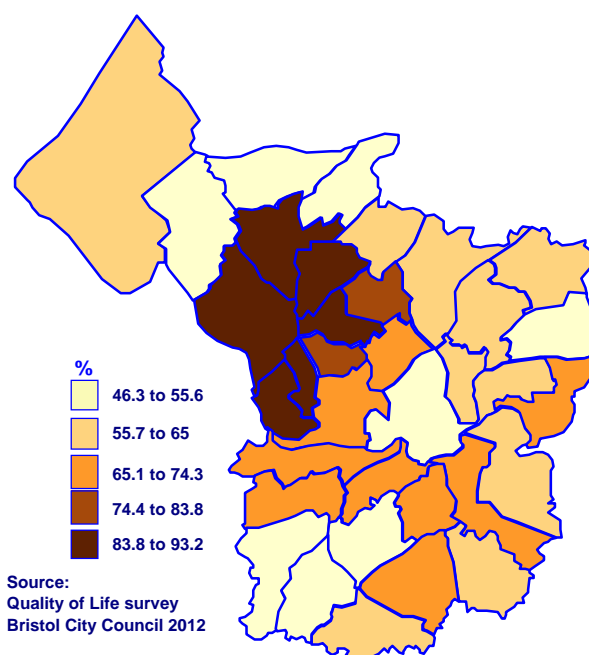
Only one in four (24%) of residents feel influential, which is not significantly different from the situation in 2005, when 22% of respondents felt influential.

There is little variation across the city for this indicator. St George East and St George West neighbourhood partnership, at 15%, has the smallest proportion of residents feeling influential whilst Windmill Hill has the biggest, at 32%. The position has worsened in Ashley where the indicator has decreased from 35% in 2008 to 21% in 2012.

Further analysis (not shown) suggests predictors for feeling influential are having higher educational qualifications and being older. There is evidence for people of Muslim faith and people living in social housing feeling more influential.

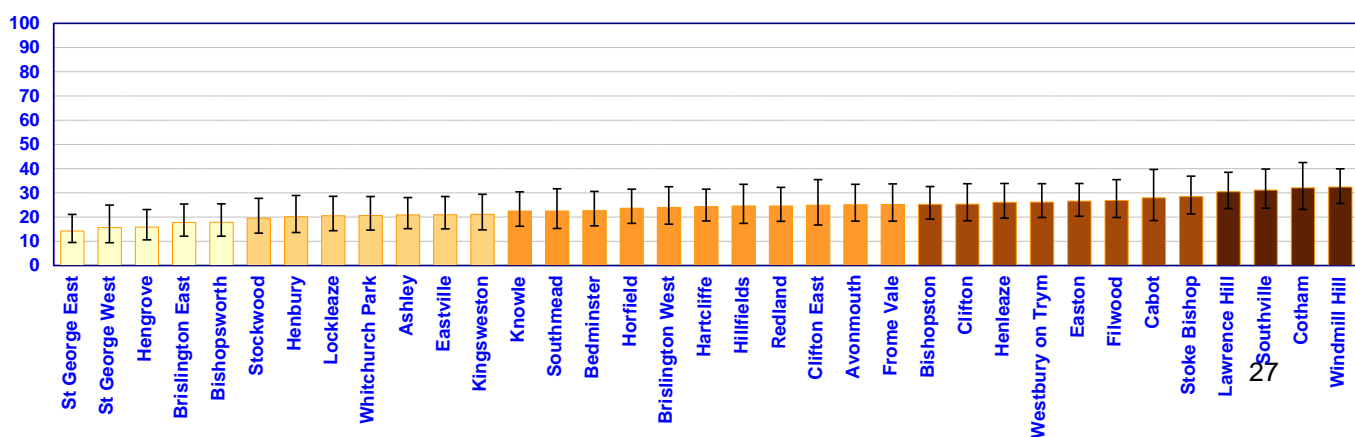
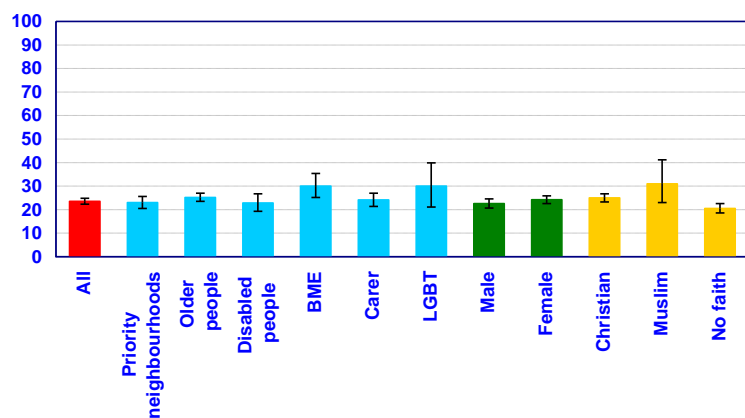
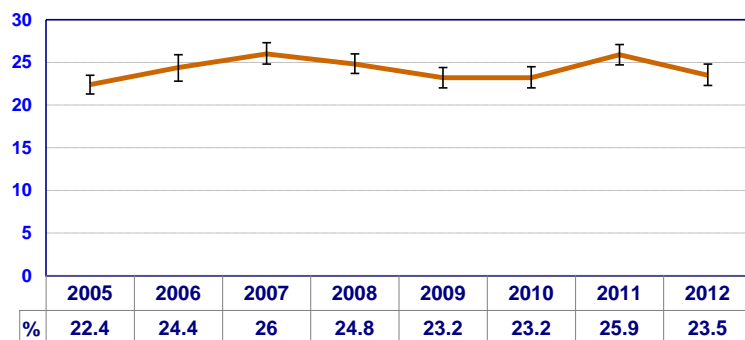
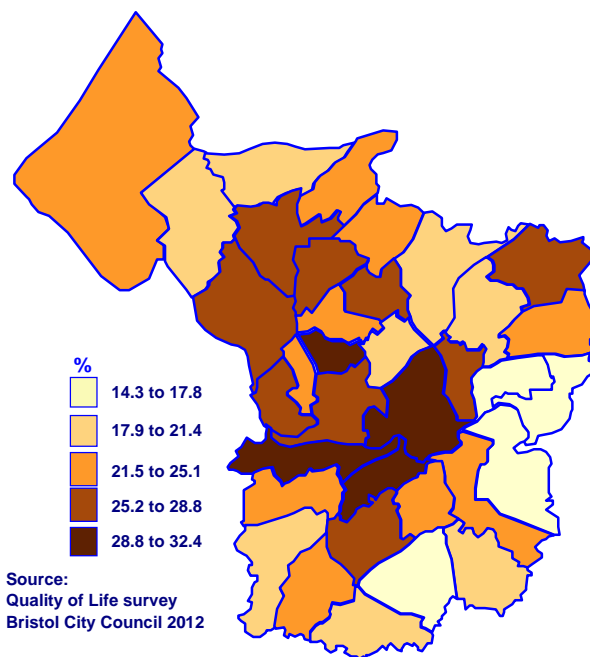
% respondents who agree that people treat other people with respect in their neighbourhood

Ward	%	lower confidence limit	upper confidence limit
Ashley	74	66.8	80.5
Avonmouth	63	54.1	71.1
Bedminster	72	63.8	79.6
Bishopston	84	77.2	88.6
Bishopsworth	55	47.0	63.5
Brislington East	61	52.0	68.7
Brislington West	69	60.0	75.9
Cabot	71	59.6	79.6
Clifton	85	77.5	89.7
Clifton East	86	76.4	91.8
Cotham	79	68.3	86.2
Easton	61	52.8	68.5
Eastville	60	51.2	67.9
Filwood	46	38.3	54.4
Frome Vale	61	52.9	69.1
Hartcliffe	53	45.7	59.7
Henbury	48	38.6	58.2
Hengrove	66	56.9	73.4
Henleaze	93	88.0	96.2
Hillfields	48	38.5	56.9
Horfield	61	52.6	68.6
Kingsweston	53	44.2	61.9
Knowle	70	61.1	76.7
Lawrence Hill	53	44.2	60.7
Lockleaze	62	53.7	69.6
Redland	91	84.4	94.4
Southmead	52	42.4	60.8
Southville	74	64.9	81.1
St George East	65	56.5	73.0
St George West	57	46.5	66.4
Stockwood	62	52.3	69.9
Stoke Bishop	90	84.3	94.2
Westbury-on-Trym	88	82.0	92.3
Whitchurch Park	62	54.0	69.6
Windmill Hill	74	67.0	79.9
BRISTOL	67.0	65.6	68.3
Question number	6e		
Sample size	4703		
Year	2012		
Priority neighbourhoods	51	48.0	53.9
Older people	70	68.1	71.8
Disabled people	63	58.6	67.1
BME	70	64.7	74.8
Carer	63	59.6	65.9
LGBT	64	53.6	73.1
Male	67.5	65.3	69.6
Female	66.7	64.9	68.5
Christian	68.2	66.4	70.0
Muslim	75	65.2	82.9
No faith	65.2	62.8	67.4



% respondents who feel they can influence decisions

Ward	%	lower confidence limit	upper confidence limit
Ashley	21	15.2	28.1
Avonmouth	25	18.3	33.5
Bedminster	23	16.4	30.6
Bishopston	25	19.2	32.6
Bishopsworth	18	12.1	25.5
Brislington East	18	12.1	25.4
Brislington West	24	17.1	32.5
Cabot	28	18.6	39.7
Clifton	25	18.5	33.8
Clifton East	25	16.7	35.5
Cotham	32	23.2	42.5
Easton	27	20.3	33.9
Eastville	21	15.1	28.5
Filwood	27	19.8	35.5
Frome Vale	25	18.3	33.7
Hartcliffe	24	18.4	31.5
Henbury	20	13.6	28.9
Hengrove	16	10.6	23.1
Henleaze	26	19.6	33.9
Hillfields	25	17.4	33.5
Horfield	24	17.4	31.5
Kingsweston	21	14.7	29.4
Knowle	23	16.2	30.4
Lawrence Hill	31	23.5	38.5
Lockleaze	21	14.4	28.6
Redland	25	18.2	32.3
Southmead	23	15.3	31.7
Southville	31	23.7	39.8
St George East	14	9.5	21.1
St George West	16	9.4	25.0
Stockwood	20	13.4	27.7
Stoke Bishop	29	21.3	36.9
Westbury-on-Trym	26	19.8	33.8
Whitchurch Park	21	14.6	28.5
Windmill Hill	32	25.6	39.9
BRISTOL	23.5	22.3	24.8
Question number 6a			
Sample size 4660			
Year 2012			
Priority neighbourhoods	23	20.5	25.6
Older people	25.2	23.5	27.0
Disabled people	22.8	19.3	26.7
BME	30	25.2	35.4
Carer	24	21.4	27.0
LGBT	30	21.1	39.9
Male	22.6	20.7	24.6
Female	24.2	22.6	25.9
Christian	25	23.3	26.7
Muslim	31	23.0	41.2
No faith	20.5	18.6	22.6



% respondents satisfied with their local neighbourhood (or area) as a place to live 😊

Supplementary indicator: % respondents who feel their neighbourhood has got better/worse/not changed in the last 2 years 😊

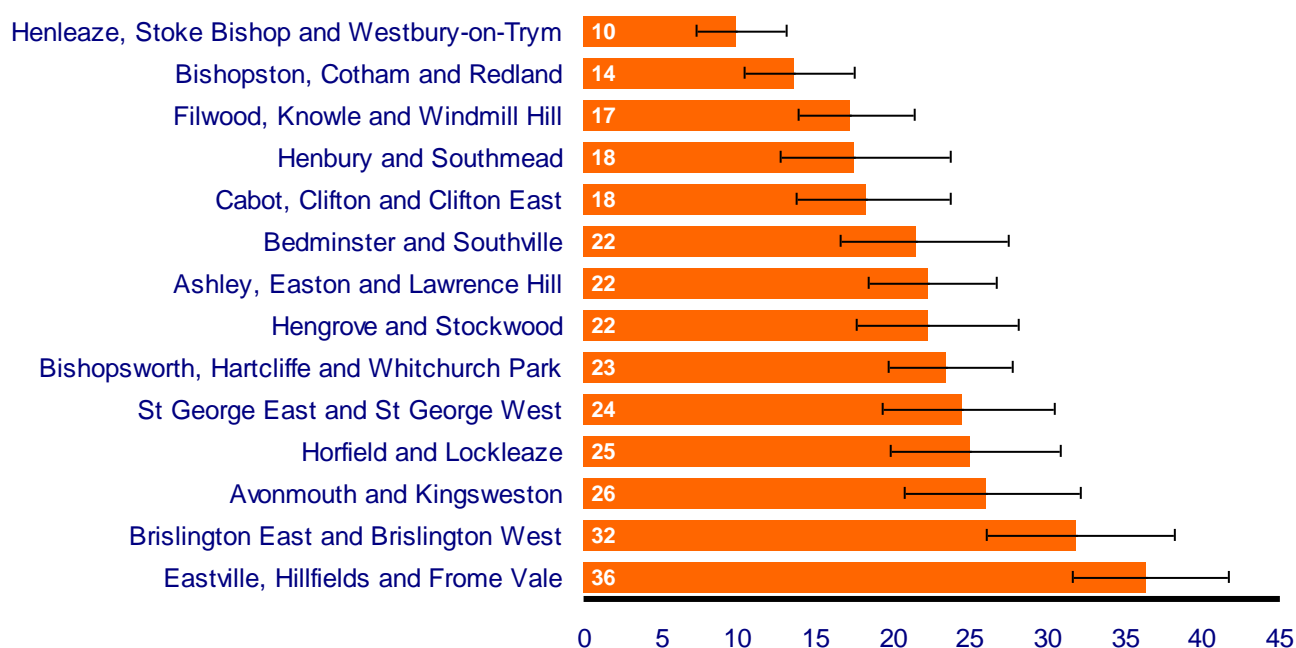
In 2012, 83% of residents said they were satisfied with their neighbourhood, a steady and significant improvement since 2005, when 77% of residents said the same. Bristol also compares well with similar cities: Manchester 77%, Newcastle 77%, Nottingham 84% and Sheffield 81%.

Satisfaction was significantly lower in deprived areas of the city (70%) but the gap between the deprived areas and the rest of the city has narrowed since 2005. Satisfaction was also lower for disabled people (78%), people in their twenties (78%) and carers (not shown), but was highest for people aged 70 years and over (88%) and people with higher qualifications (not shown). Most satisfied residents lived in Westbury-on-Trym, at 99% and the least in Lawrence Hill at 65%.

Questions were also asked about neighbourhood change in the last 2 years (graph below). The Greater Fishponds area (Hillfields, Eastville and Frome Vale) had a higher proportion of residents who said their neighbourhood had got worse (36%).

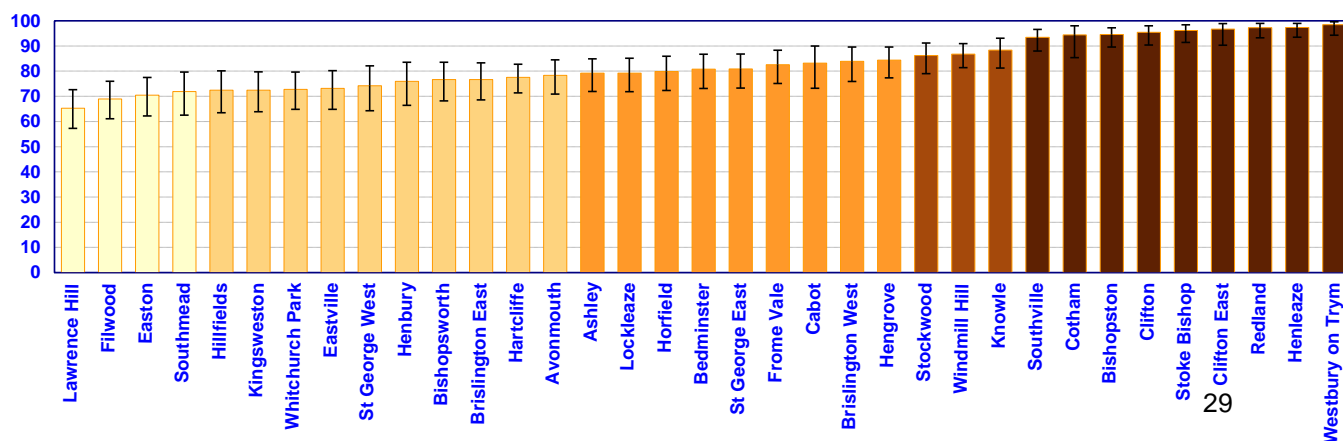
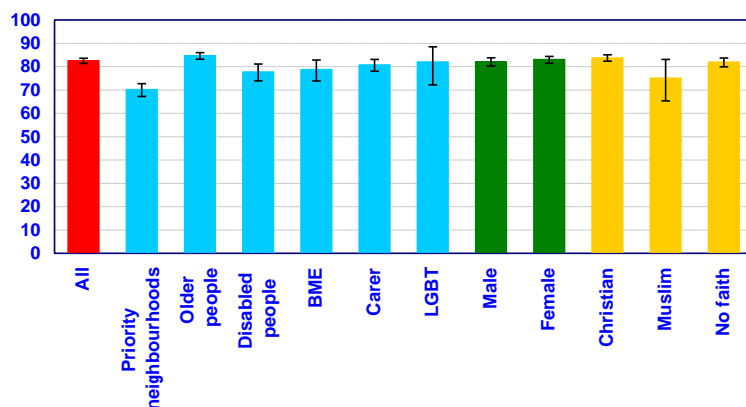
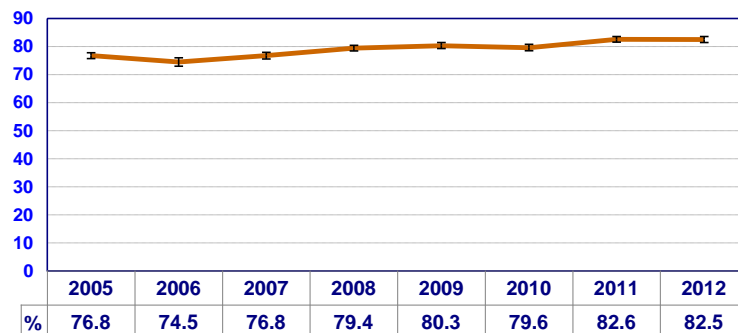
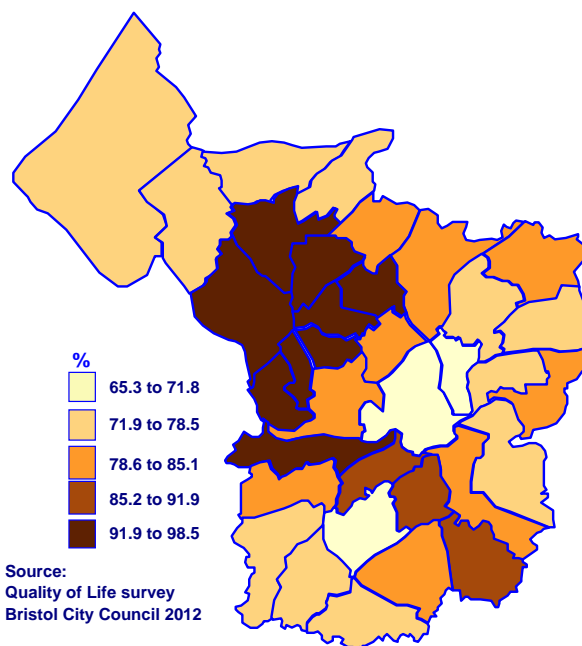
Neighbourhood Partnership Areas

% respondents who think their neighbourhood has got worse over the last 2 years



% respondents satisfied with neighbourhood

Ward	%	lower confidence limit	upper confidence limit
Ashley	79	71.9	84.9
Avonmouth	78	70.9	84.5
Bedminster	81	73.1	86.7
Bishopston	95	89.6	97.2
Bishopsworth	77	68.2	83.5
Brislington East	77	68.6	83.3
Brislington West	84	75.9	89.6
Cabot	83	73.2	90.0
Clifton	96	90.4	98.0
Clifton East	97	90.3	98.9
Cotham	94	85.4	98.0
Easton	71	62.2	77.5
Eastville	73	64.8	80.2
Filwood	69	61.1	76.0
Frome Vale	83	75.1	88.3
Hartcliffe	78	71.4	82.7
Henbury	76	66.4	83.5
Hengrove	84	77.3	89.6
Henleaze	97	93.5	99.0
Hillfields	73	63.5	80.1
Horfield	80	72.3	85.9
Kingsweston	73	63.9	79.7
Knowle	88	81.2	93.1
Lawrence Hill	65	57.3	72.6
Lockleaze	79	71.8	85.1
Redland	97	93.2	99.0
Southmead	72	62.5	79.6
Southville	94	88.0	96.6
St George East	81	73.3	86.8
St George West	74	64.3	82.1
Stockwood	86	79.0	91.2
Stoke Bishop	96	91.4	98.4
Westbury-on-Trym	99	94.3	99.6
Whitchurch Park	73	64.8	79.6
Windmill Hill	87	81.4	90.9
BRISTOL	82.5	81.4	83.6
Question number	2		
Sample size	4758		
Year	2012		
Priority neighbourhoods	70.1	67.2	72.7
Older people	84.6	83.2	86.0
Disabled people	77.7	73.9	81.1
BME	78.7	73.8	82.8
Carer	81	78.0	83.1
LGBT	82	72.2	88.5
Male	82.1	80.3	83.8
Female	83	81.5	84.4
Christian	83.7	82.3	85.1
Muslim	75	65.3	83.1
No faith	81.9	79.9	83.7



Note

In order to protect against disclosure of personal information, Census records have been swapped between different geographic areas. Some counts will be affected, particularly small counts at the lowest geographies.

Useful links

All 2011 Census data is available from the NOMIS web site

<https://www.nomisweb.co.uk/census/2011>

Further census data including 2011 Census Profiles for wards and other areas are available on the Bristol City Council census web page

<http://www.bristol.gov.uk/census>

The Quality of Life report 2013 and the Excel spreadsheet tool with over 200 indicators measured 2005-2012 is available at <http://bristol.gov.uk/qualityoflife>

Further information

Community Cohesion

Ian Quaife, Community Cohesion and Equalities team

E: ian.quaife@bristol.gov.uk

W: www.bristol.gov.uk/page/community-and-safety/community-cohesion-and-integration

2011 Census statistics

Jayne Mills, Strategic Planning, Neighbourhoods and City Development

E: jayne.mills@bristol.gov.uk

W: www.bristol.gov.uk/census

Quality of Life Survey

Sarah McMahon, Consultation, Research and Intelligence

E: sarah.mcmahon@bristol.gov.uk

W: www.bristol.gov.uk/qualityoflife

July 2013

Appendix: Community Cohesion Statistics by ward

Figure A1: Selected Community Cohesion Statistics - Change 2001 to 2011

Source: Office for National Statistics © Crown Copyright 2013. ONS Crown Copyright Reserved [from Nomis]

Ward	Total population				BME				Non-UK born				Muslim			
	2001	2011	change	rank	2001	2011	change	rank	2001	2011	change	rank	2001	2011	change	rank
Ashley	13,422	16,225	2,803	3	2,860	5,766	2,906	3	2,108	4,032	1,924	4	742	2,381	1,639	2
Avonmouth	12,150	12,485	335	26	366	773	407	23	458	1,175	717	16	56	173	117	17
Bedminster	10,749	12,448	1,699	5	340	744	404	24	439	1,094	655	19	87	117	30	30
Bishopston	12,207	13,871	1,664	6	978	1,446	468	19	1,255	1,633	378	25	176	276	100	21
Bishopsworth	11,352	11,576	224	29	299	564	265	30	309	557	248	30	99	114	15	31
Brislington East	11,508	11,584	76	30	365	1,004	639	17	421	1,070	649	20	66	182	116	18
Brislington West	10,623	11,355	732	21	325	1,003	678	16	420	1,089	669	18	26	223	197	13
Cabot	9,849	15,940	6,091	1	1,276	4,199	2,923	2	1,796	4,856	3,060	2	277	966	689	7
Clifton	10,536	11,237	701	22	790	1,185	395	25	1,584	1,878	294	29	103	158	55	25
Clifton East	9,612	10,581	969	14	894	1,144	250	31	1,608	1,965	357	27	149	142	-7	35
Cotham	10,938	12,554	1,616	7	824	1,257	433	20	1,419	1,851	432	22	145	177	32	29
Easton	12,213	13,541	1,328	10	2,667	5,135	2,468	4	1,582	3,688	2,106	3	899	2,030	1,131	4
Eastville	10,989	12,455	1,466	8	1,914	4,318	2,404	5	1,211	2,836	1,625	5	599	1,808	1,209	3
Filwood	11,637	12,267	630	23	436	1,173	737	14	345	1,108	763	14	85	218	133	16
Frome Vale	10,776	11,616	840	19	861	2,211	1,350	8	724	1,633	909	11	230	734	504	8
Hartcliffe	11,232	11,474	242	28	263	484	221	33	263	465	202	31	42	42	0	33
Henbury	9,507	10,699	1,192	11	410	1,274	864	12	511	1,269	758	15	61	274	213	12
Hengrove	11,334	11,723	389	25	256	599	343	27	356	684	328	28	40	80	40	27
Henleaze	10,521	10,402	-119	31	528	750	222	32	986	1,089	103	33	89	84	-5	34
Hillfields	12,354	13,504	1,150	12	991	3,034	2,043	7	706	1,985	1,279	7	262	1,112	850	6
Horfield	11,394	12,827	1,433	9	1,077	2,411	1,334	9	1,173	2,248	1,075	10	231	541	310	10
Kingsweston	10,905	10,337	-568	35	481	772	291	28	543	961	418	23	69	163	94	22
Knowle	10,989	11,315	326	27	623	1,003	380	26	592	1,110	518	21	235	316	81	23
Lawrence Hill	13,179	18,942	5,763	2	3,360	10,449	7,089	1	2,040	7,081	5,041	1	1,110	5,713	4,603	1
Lockleaze	11,178	12,080	902	16	1,524	3,634	2,110	6	1,094	2,431	1,337	6	412	1,276	864	5
Redland	10,866	11,801	935	15	759	1,191	432	21	1,190	1,567	377	26	128	236	108	20
St George East	11,358	12,157	799	20	500	1,258	758	13	405	1,076	671	17	103	334	231	11
St George West	10,908	11,895	987	13	965	2,281	1,316	10	676	1,939	1,263	8	211	629	418	9
Southmead	11,100	11,956	856	18	661	1,887	1,226	11	591	1,851	1,260	9	144	318	174	14
Southville	10,293	12,543	2,250	4	477	1,190	713	15	794	1,668	874	12	83	229	146	15
Stockwood	10,938	10,802	-136	32	238	504	266	29	343	492	149	32	43	84	41	26
Stoke Bishop	9,711	9,269	-442	34	721	869	148	34	1,174	1,241	67	34	120	153	33	28
Westbury-on-Trym	10,341	10,754	413	24	485	907	422	22	871	1,262	391	24	86	158	72	24
Whitchurch Park	11,055	10,839	-216	33	372	394	22	35	326	388	62	35	75	81	6	32
Windmill Hill	12,321	13,180	859	17	1,199	1,829	630	18	998	1,854	856	13	381	494	113	19
Bristol	390,045	428,234	38,189		31,085	68,642	37,557		31,311	63,126	31,815		7,664	22,016	14,352	

Figure A2: 2011 Census: Ethnic Group by ward

Source: Office for National Statistics © Crown Copyright 2013. ONS Crown Copyright Reserved [from Nomis]

Ward	Total population	White British	White Irish	White Gypsy or Irish Traveller	Other White	BME Total	%	Mixed	Indian	Pakistani	Bangladeshi	Chinese	Other Asian	Black African	Black Caribbean	Other Black	Arab	Other ethnic group
Ashley	16,225	9,176	183	13	1,087	5,766	35.5	1,018	150	553	63	104	153	1,470	927	1,062	65	201
Avonmouth	12,485	10,959	87	5	661	773	6.2	241	111	20	30	24	69	108	60	52	14	44
Bedminster	12,448	10,985	116	12	591	744	6.0	343	78	30	18	32	78	56	39	27	12	31
Bishopston	13,871	11,444	233	16	732	1,446	10.4	499	147	67	42	90	104	173	123	111	31	59
Bishopsworth	11,576	10,737	67	7	201	564	4.9	264	45	20	16	32	27	58	33	33	7	29
Brislington East	11,584	9,992	67	1	520	1,004	8.7	324	61	78	36	44	57	155	105	105	16	23
Brislington West	11,355	9,705	87	2	558	1,003	8.8	341	92	99	11	55	47	127	88	91	23	29
Cabot	15,940	9,992	162	17	1,570	4,199	26.3	623	533	137	25	1,161	399	681	143	189	143	165
Clifton	11,237	9,172	148	5	727	1,185	10.5	360	132	24	2	246	118	100	41	34	72	56
Clifton East	10,581	8,409	137	4	887	1,144	10.8	353	129	39	15	247	137	76	25	31	33	59
Cotham	12,554	10,319	172	13	793	1,257	10.0	412	191	40	10	166	112	133	49	63	43	38
Easton	13,541	7,103	127	59	1,117	5,135	37.9	914	384	947	245	63	151	727	840	589	61	214
Eastville	12,455	7,386	117	13	621	4,318	34.7	749	481	913	219	85	189	653	496	313	71	149
Filwood	12,267	10,535	80	2	477	1,173	9.6	411	30	65	10	47	196	268	56	37	12	41
Frome Vale	11,616	8,837	103	6	459	2,211	19.0	508	200	310	134	79	120	356	261	128	38	77
Hartcliffe	11,474	10,732	50	13	195	484	4.2	226	49	11	2	11	27	57	41	39	12	9
Henbury	10,699	8,810	73	5	537	1,274	11.9	369	184	72	84	46	84	207	105	57	28	38
Hengrove	11,723	10,769	83	3	269	599	5.1	205	64	40	20	26	48	85	57	28	6	20
Henleaze	10,402	9,113	96	6	437	750	7.2	266	119	35	10	70	59	43	44	43	23	38
Hillfields	13,504	9,831	93	4	542	3,034	22.5	614	342	462	168	73	160	422	356	296	36	105
Horfield	12,827	9,488	147	7	774	2,411	18.8	533	532	105	82	78	188	344	187	249	51	62
Kingsweston	10,337	9,047	73	9	436	772	7.5	246	32	35	16	19	97	151	63	73	7	33
Knowle	11,315	9,690	98	10	514	1,003	8.9	289	93	301	24	44	48	74	54	36	15	25
Lawrence Hill	18,942	7,133	150	28	1,182	10,449	55.2	1,211	501	976	329	196	350	3,474	1,123	1,760	151	378
Lockleaze	12,080	7,646	81	13	706	3,634	30.1	600	319	480	189	107	197	568	464	583	46	81
Redland	11,801	9,724	179	5	702	1,191	10.1	432	112	115	17	112	96	73	55	90	38	51
St George East	12,157	10,433	58	20	388	1,258	10.3	318	115	95	70	61	79	199	178	78	17	48
St George West	11,895	8,675	117	15	807	2,281	19.2	528	268	222	47	42	99	335	287	300	18	135
Southmead	11,956	9,371	91	9	598	1,887	15.8	362	456	47	85	57	257	311	131	101	27	53
Southville	12,543	10,324	163	7	859	1,190	9.5	463	125	57	34	85	68	125	76	66	42	49
Stockwood	10,802	10,083	58	0	157	504	4.7	175	56	26	13	37	30	71	30	31	10	25
Stoke Bishop	9,269	7,885	70	5	440	869	9.4	219	154	76	3	129	101	64	14	26	27	56
Westbury-on-Trym	10,754	9,306	102	1	438	907	8.4	257	156	46	0	139	142	54	24	19	21	49
Whitchurch Park	10,839	10,253	46	16	130	394	3.6	185	8	25	3	11	30	60	27	20	3	22
Windmill Hill	13,180	10,368	137	8	838	1,829	13.9	580	98	295	32	68	138	227	125	162	53	51
Bristol	428,234	333,432	3,851	359	21,950	68,642	16.0	15,438	6,547	6,863	2,104	3,886	4,255	12,085	6,727	6,922	1,272	2,543

Figure A3: 2011 Census: Religion by ward

Source: Office for National Statistics © Crown Copyright 2013. ONS Crown Copyright Reserved [from Nomis]

Ward	Total population	Christian	Buddhist	Hindu	Jewish	Muslim	Sikh	Other religions	No religion	Religion not stated
Ashley	16,225	4,206	210	56	30	2,381	87	289	7,155	1,811
Avonmouth	12,485	7,120	27	26	9	173	29	44	4,243	814
Bedminster	12,448	6,067	60	49	21	117	6	64	5,119	945
Bishopston	13,871	5,112	145	71	42	276	63	109	6,835	1,218
Bishopsworth	11,576	6,293	25	27	6	114	6	49	4,227	829
Brislington East	11,584	6,117	35	26	4	182	14	59	4,236	911
Brislington West	11,355	5,967	50	43	11	223	11	81	4,176	793
Cabot	15,940	5,312	281	278	63	966	84	135	7,490	1,331
Clifton	11,237	4,753	114	90	50	158	11	98	4,974	989
Clifton East	10,581	4,338	115	81	66	142	28	54	4,873	884
Cotham	12,554	4,563	97	91	68	177	34	90	6,393	1,041
Easton	13,541	4,893	118	98	25	2,030	206	153	4,719	1,299
Eastville	12,455	5,296	70	148	8	1,808	267	113	3,729	1,016
Filwood	12,267	5,832	30	21	3	218	22	60	5,227	854
Frome Vale	11,616	6,054	60	64	14	734	154	86	3,541	909
Hartcliffe	11,474	5,911	12	4	6	42	6	42	4,625	826
Henbury	10,699	5,660	37	75	7	274	37	59	3,720	830
Hengrove	11,723	7,053	20	30	15	80	8	20	3,701	796
Henleaze	10,402	5,990	41	94	32	84	10	48	3,239	864
Hillfields	13,504	6,647	56	71	13	1,112	162	74	4,287	1,082
Horfield	12,827	6,399	69	224	17	541	126	81	4,397	973
Kingsweston	10,337	5,657	29	19	8	163	10	50	3,672	729
Knowle	11,315	5,945	47	40	9	316	14	41	4,053	850
Lawrence Hill	18,942	5,979	138	218	28	5,713	217	132	4,812	1,705
Lockleaze	12,080	5,648	52	120	15	1,276	151	76	3,694	1,048
Redland	11,801	4,681	86	58	53	236	61	110	5,430	1,086
St George East	12,157	6,587	45	50	5	334	49	53	4,130	904
St George West	11,895	5,873	70	68	7	629	133	84	3,961	1,070
Southmead	11,956	6,372	46	120	8	318	31	47	4,073	941
Southville	12,543	5,019	93	82	16	229	19	97	5,889	1,099
Stockwood	10,802	6,302	26	36	1	84	10	35	3,445	863
Stoke Bishop	9,269	5,516	58	90	60	153	18	51	2,676	647
Westbury-on-Trym	10,754	6,651	51	83	25	158	23	51	2,860	852
Whitchurch Park	10,839	5,497	17	6	8	81	8	37	4,393	792
Windmill Hill	13,180	4,944	119	55	24	494	18	121	6,224	1,181
Bristol	428,234	200,254	2,549	2,712	777	22,016	2,133	2,793	160,218	34,782

Figure A4: 2011 Census: Country of Birth by ward

Source: Office for National Statistics © Crown Copyright 2013. ONS Crown Copyright Reserved [from Nomis]

Summary table								Individual selected countries (not UK) with more than 3,000 residents					
Ward	Total population	UK	%	Other EU member countries	%	Other countries	%	Ward	Poland	EU A8 countries (not including Poland)#	Somalia	India	Jamaica
Ashley	16,225	12,193	75.1	1,073	6.6	2,959	18.2	Ashley	210	161	928	97	505
Avonmouth	12,485	11,310	90.6	688	5.5	487	3.9	Avonmouth	411	101	9	71	21
Bedminster	12,448	11,354	91.2	610	4.9	484	3.9	Bedminster	198	124	12	48	9
Bishopston	13,871	12,238	88.2	707	5.1	926	6.7	Bishopston	118	114	37	68	43
Bishopsworth	11,576	11,019	95.2	311	2.7	246	2.1	Bishopsworth	104	45	17	28	17
Brislington East	11,584	10,514	90.8	525	4.5	545	4.7	Brislington East	232	121	13	37	51
Brislington West	11,355	10,266	90.4	547	4.8	542	4.8	Brislington West	182	150	24	47	49
Cabot	15,940	11,084	69.5	1,378	8.6	3,478	21.8	Cabot	135	308	242	243	63
Clifton	11,237	9,359	83.3	644	5.7	1,234	11.0	Clifton	43	86	13	69	6
Clifton East	10,581	8,616	81.4	714	6.7	1,251	11.8	Clifton East	75	96	3	73	13
Cotham	12,554	10,703	85.3	714	5.7	1,137	9.1	Cotham	71	78	25	77	17
Easton	13,541	9,853	72.8	1,199	8.9	2,489	18.4	Easton	435	293	301	232	416
Eastville	12,455	9,619	77.2	726	5.8	2,110	16.9	Eastville	261	145	226	291	250
Filwood	12,267	11,159	91.0	508	4.1	600	4.9	Filwood	243	103	14	22	23
Frome Vale	11,616	9,983	85.9	460	4.0	1,173	10.1	Frome Vale	127	90	129	114	114
Hartcliffe	11,474	11,009	95.9	219	1.9	246	2.1	Hartcliffe	84	31	7	37	30
Henbury	10,699	9,430	88.1	545	5.1	724	6.8	Henbury	206	117	11	107	43
Hengrove	11,723	11,039	94.2	342	2.9	342	2.9	Hengrove	151	47	16	41	25
Henleaze	10,402	9,313	89.5	431	4.1	658	6.3	Henleaze	50	67	4	71	21
Hillfields	13,504	11,519	85.3	638	4.7	1,347	10.0	Hillfields	218	118	143	192	146
Horfield	12,827	10,579	82.5	825	6.4	1,423	11.1	Horfield	259	130	93	348	84
Kingsweston	10,337	9,376	90.7	497	4.8	464	4.5	Kingsweston	171	75	14	24	27
Knowle	11,315	10,205	90.2	543	4.8	567	5.0	Knowle	198	126	10	54	28
Lawrence Hill	18,942	11,861	62.6	1,516	8.0	5,565	29.4	Lawrence Hill	375	283	2,111	296	631
Lockleaze	12,080	9,649	79.9	775	6.4	1,656	13.7	Lockleaze	327	120	205	187	212
Redland	11,801	10,234	86.7	665	5.6	902	7.6	Redland	89	96	44	64	23
St George East	12,157	11,081	91.1	414	3.4	662	5.4	St George East	149	85	41	74	57
St George West	11,895	9,956	83.7	881	7.4	1,058	8.9	St George West	410	159	103	127	128
Southmead	11,956	10,105	84.5	605	5.1	1,246	10.4	Southmead	268	126	35	339	82
Southville	12,543	10,875	86.7	840	6.7	828	6.6	Southville	207	151	39	77	41
Stockwood	10,802	10,310	95.4	196	1.8	296	2.7	Stockwood	49	31	3	30	19
Stoke Bishop	9,269	8,028	86.6	403	4.3	838	9.0	Stoke Bishop	24	55	1	75	10
Westbury-on-Trym	10,754	9,492	88.3	429	4.0	833	7.7	Westbury-on-Trym	41	73	8	68	11
Whitchurch Park	10,839	10,451	96.4	186	1.7	202	1.9	Whitchurch Park	50	28	14	11	17
Windmill Hill	13,180	11,326	85.9	832	6.3	1,022	7.8	Windmill Hill	244	172	52	70	47
Bristol	428,234	365,108	85.3	22,586	5.3	40,540	9.5	Bristol	6,415	4,105	4,947	3,809	3,279
								# EU Accession countries April 2001-March 2011 Czech Republic, Estonia, Hungary, Latvia, Lithuania, Poland, Slovak Republic, Slovenia					

Figure A5: 2011 Census: Migrants by ward

Source: Office for National Statistics © Crown Copyright 2013. ONS Crown Copyright Reserved [from Nomis]

Ward	Total population	Born in UK	%	Resident in UK:		2 years or more but less than 5 years	%	5 years or more but less than 10 years	%	10 years or more	%
				Less than 2 years	%						
Ashley	16,225	12,193	75.1	443	2.7	596	3.7	1,120	6.9	1,873	11.5
Avonmouth	12,485	11,310	90.6	131	1.0	307	2.5	354	2.8	383	3.1
Bedminster	12,448	11,354	91.2	158	1.3	288	2.3	258	2.1	390	3.1
Bishopston	13,871	12,238	88.2	216	1.6	209	1.5	296	2.1	912	6.6
Bishopsworth	11,576	11,019	95.2	51	0.4	103	0.9	136	1.2	267	2.3
Brislington East	11,584	10,514	90.8	116	1.0	208	1.8	344	3.0	402	3.5
Brislington West	11,355	10,266	90.4	111	1.0	245	2.2	301	2.7	432	3.8
Cabot	15,940	11,084	69.5	1,831	11.5	1,168	7.3	871	5.5	986	6.2
Clifton	11,237	9,359	83.3	476	4.2	336	3.0	280	2.5	786	7.0
Clifton East	10,581	8,616	81.4	492	4.6	411	3.9	371	3.5	691	6.5
Cotham	12,554	10,703	85.3	353	2.8	343	2.7	306	2.4	849	6.8
Easton	13,541	9,853	72.8	439	3.2	782	5.8	1,012	7.5	1,455	10.7
Eastville	12,455	9,619	77.2	432	3.5	520	4.2	714	5.7	1,170	9.4
Filwood	12,267	11,159	91.0	70	0.6	275	2.2	437	3.6	326	2.7
Frome Vale	11,616	9,983	85.9	168	1.4	313	2.7	420	3.6	732	6.3
Hartcliffe	11,474	11,009	95.9	36	0.3	92	0.8	131	1.1	206	1.8
Henbury	10,699	9,430	88.1	123	1.1	263	2.5	347	3.2	536	5.0
Hengrove	11,723	11,039	94.2	51	0.4	144	1.2	174	1.5	315	2.7
Henleaze	10,402	9,313	89.5	128	1.2	101	1.0	132	1.3	728	7.0
Hillfields	13,504	11,519	85.3	213	1.6	334	2.5	662	4.9	776	5.7
Horfield	12,827	10,579	82.5	373	2.9	419	3.3	613	4.8	843	6.6
Kingsweston	10,337	9,376	90.7	81	0.8	172	1.7	230	2.2	478	4.6
Knowle	11,315	10,205	90.2	122	1.1	207	1.8	261	2.3	520	4.6
Lawrence Hill	18,942	11,861	62.6	974	5.1	1,401	7.4	2,427	12.8	2,279	12.0
Lockleaze	12,080	9,649	79.9	235	1.9	455	3.8	796	6.6	945	7.8
Redland	11,801	10,234	86.7	229	1.9	243	2.1	311	2.6	784	6.6
St George East	12,157	11,081	91.1	90	0.7	229	1.9	348	2.9	409	3.4
St George West	11,895	9,956	83.7	252	2.1	494	4.2	546	4.6	647	5.4
Southmead	11,956	10,105	84.5	213	1.8	417	3.5	650	5.4	571	4.8
Southville	12,543	10,875	86.7	270	2.2	376	3.0	368	2.9	654	5.2
Stockwood	10,802	10,310	95.4	37	0.3	54	0.5	115	1.1	286	2.6
Stoke Bishop	9,269	8,028	86.6	205	2.2	158	1.7	173	1.9	705	7.6
Westbury-on-Trym	10,754	9,492	88.3	171	1.6	185	1.7	203	1.9	703	6.5
Whitchurch Park	10,839	10,451	96.4	34	0.3	59	0.5	76	0.7	219	2.0
Windmill Hill	13,180	11,326	85.9	286	2.2	349	2.6	479	3.6	740	5.6
Bristol	428,234	365,108	85.3	9,610	2.2	12,256	2.9	16,262	3.8	24,998	5.8

Figure A6: 2011 Census: Language by ward

Source: Office for National Statistics © Crown Copyright 2013. ONS Crown Copyright Reserved [from Nomis]

Ward	All people aged 3 and over	Main language is English	%	Main language is not English	%	People who cannot speak English or not speak English very well	%
Ashley	15,526	13,262	85.4	2,264	14.6	437	2.8
Avonmouth	11,902	11,139	93.6	763	6.4	162	1.4
Bedminster	11,959	11,343	94.8	616	5.2	99	0.8
Bishopston	13,197	12,539	95.0	658	5.0	97	0.7
Bishopsworth	11,048	10,750	97.3	298	2.7	55	0.5
Brislington East	11,065	10,476	94.7	589	5.3	94	0.8
Brislington West	10,859	10,245	94.3	614	5.7	119	1.1
Cabot	15,626	12,606	80.7	3,020	19.3	230	1.5
Clifton	11,000	10,238	93.1	762	6.9	68	0.6
Clifton East	10,364	9,492	91.6	872	8.4	56	0.5
Cotham	12,309	11,567	94.0	742	6.0	65	0.5
Easton	12,707	10,484	82.5	2,223	17.5	520	4.1
Eastville	11,857	10,205	86.1	1,652	13.9	359	3.0
Filwood	11,638	10,956	94.1	682	5.9	134	1.2
Frome Vale	11,177	10,289	92.1	888	7.9	169	1.5
Hartcliffe	10,928	10,698	97.9	230	2.1	36	0.3
Henbury	10,155	9,482	93.4	673	6.6	123	1.2
Hengrove	11,240	10,909	97.1	331	2.9	85	0.8
Henleaze	9,980	9,575	95.9	405	4.1	62	0.6
Hillfields	12,816	11,615	90.6	1,201	9.4	259	2.0
Horfield	12,283	11,084	90.2	1,199	9.8	186	1.5
Kingsweston	9,834	9,351	95.1	483	4.9	99	1.0
Knowle	10,839	10,193	94.0	646	6.0	125	1.2
Lawrence Hill	17,620	12,694	72.0	4,926	28.0	1,124	6.4
Lockleaze	11,486	10,009	87.1	1,477	12.9	295	2.6
Redland	11,456	10,811	94.4	645	5.6	61	0.5
St George East	11,665	11,051	94.7	614	5.3	111	1.0
St George West	11,212	10,000	89.2	1,212	10.8	265	2.4
Southmead	11,390	10,355	90.9	1,035	9.1	178	1.6
Southville	12,022	11,120	92.5	902	7.5	109	0.9
Stockwood	10,433	10,192	97.7	241	2.3	36	0.3
Stoke Bishop	9,036	8,581	95.0	455	5.0	32	0.4
Westbury-on-Trym	10,290	9,766	94.9	524	5.1	61	0.6
Whitchurch Park	10,281	10,126	98.5	155	1.5	31	0.3
Windmill Hill	12,498	11,506	92.1	992	7.9	147	1.2
Bristol	409,698	374,709	91.5	34,989	8.5	6,089	1.5