

Children and Families Structure

**2nd and 3rd Tier Officers
Childrens Management
Team**

Hannah Woodhouse
Executive Director
Children & Education

Fiona Tudge - Director
Children and Families

Head of Service
Permanency & Specialist
Services
City Wide Team
James Beardall

Service Manager
Through Care
Maria Finlayson

Service Manager
Disabled Children and
Specialist Service
Kate Markley

Service Manager / Clinical Lead
Placement Support &
Reunification
Becki Robinson

Placement Services
Service Manager
Amanda Braund

Corporate Parenting Manager
Liz Small

Hope Virtual School
James Gregory

Head of Service
Children's Safeguarding and
Targeted Services
Tara Parsons

Area Managers North
Social Work Team
Amanda Bryan

Area Manager South
Social Work Team
Katrina Murphy

Area Manager
East/Central
Social Work Teams
Anne Farmer

Service Manager
First Assessment Service
James McFeat

Simon Newling Ward
Youth Justice Service and Safer
Options Service Manager

Matthew Annable
FiF/Early Help Manager
North

Vacant Post
FiF/Early Help Manager
East Central

Lucy Watkins
FiF/Early Help Manager
South

Strategic Safeguarding
and
Quality Assurance Service
Manager
Becky Lewis

Head of Childrens
Commissioning
Gail Rogers

North Area - Social Work Teams

Location for area team:
Ridingleaze House,
Ridingleaze,
Lawrence Weston,
Bristol BS11 0QE

Tara Parsons
Head of Service
Children's Safeguarding and Targeted Services

North Area Social Work Team
Amanda Bryan

Deputy Service Manager
Job share

Consultant Social Worker
Childrens Services
Unit 1

Consultant Social Worker
Childrens Services
Unit 2

Consultant Social Worker
Childrens Services
Unit 3

Consultant Social Worker
Childrens Services
Unit 4

3 x BG10-12 SW
1 x BG8 FSW
.5x BG 7 CSCA

2 x BG10-12 SW
1 x BG8 FSW
2 x BG9 CSCP
1x BG 7 CSCA

3 x BG10-12 SW
1 x BG8 FSW
1x BG 7 CSCA

3 x BG10-12 SW
1 x BG8 FSW
1 x BG9 CSCP (apprentice)
1x BG 7 CSCA

Consultant Social Worker
Childrens Services
Unit 5

Consultant Social Worker
Childrens Services
Unit 6

Consultant Social Worker
Childrens Services
Unit 7

Consultant Social Worker
Childrens Services
Unit 8

3 x BG10-12 SW
1 x BG8 FSW
.5x BG 7 CSCA

3 x BG10-12 SW
1 x BG8 FSW
.5x BG 7 CSCA

3 x BG10-12 SW
1 x BG8 FSW
1 x BG9 CSCP (apprentice)
1x BG 7 CSCA

2 x BG10-12 SW
1x BG8 FSW
.5 x BG9 CSCP
1x BG 7 CSCA



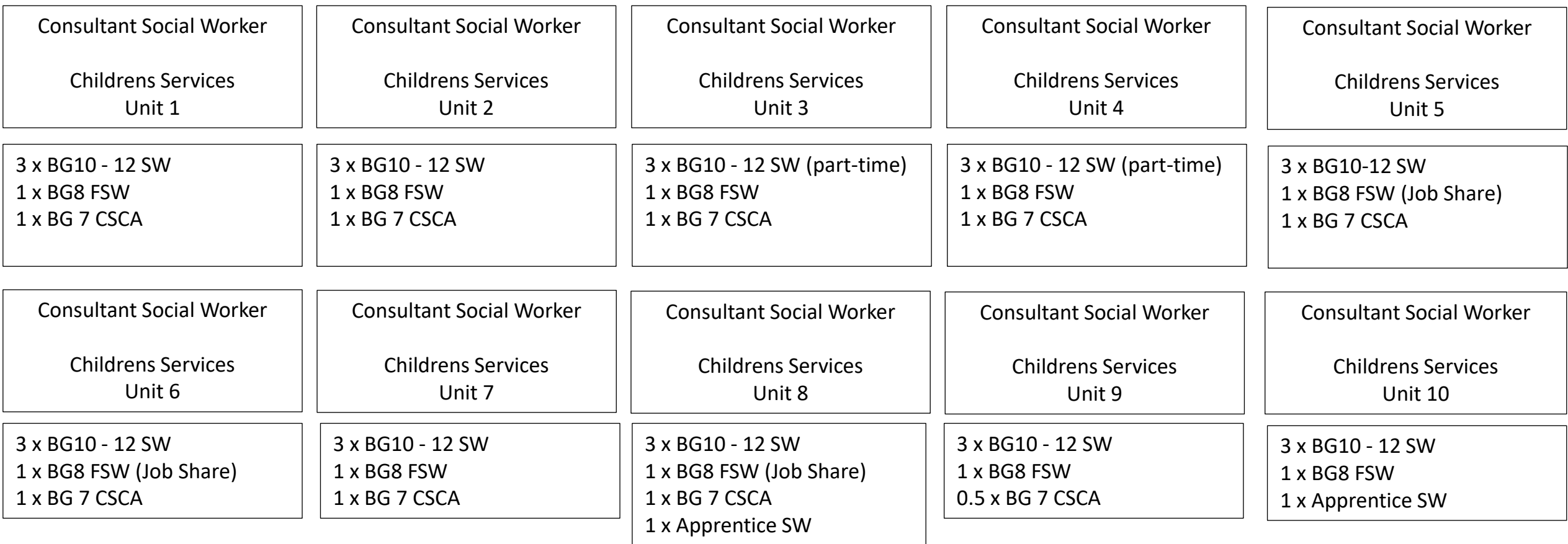
South Area - Social Work Teams

Location for area team:
Symes House
Hartcliffe
BS13 0EE

Tara Parsons
Head of Service
Children's Safeguarding and Targeted Services

South Area Social Work Team
Katrina Murphy

Deputy Service Managers



East Central Area Services

Location for area team:
East/Central Team
Welsman
Princes Street
Bristol
BS2 9JA

Tara Parsons
Head of Service
Children's Safeguarding and Targeted Services

East Central - Area Social Work Team
Anne Farmer

Deputy Service Manager
1 x Floating BG 7 CSCA

Consultant Social Worker
Childrens Services
Unit 1

Consultant Social Worker
Childrens Services
Unit 2

Consultant Social Worker
Childrens Services
Unit 3

Consultant Social Worker
Childrens Services
Unit 4

3 x BG10-12 SW
1 x BG8 FSW
1 x 0.5 BG 7 CSCA

3 x BG10-12 SW
1 x BG8 FSW
2 x BG 9 CSCP PT
1 x BG 7 CSCA

3 x BG10-12 SW
1 x BG8 FSW
1 x 0.5 BG 7 CSCA

3 x BG10-12 SW
1 x BG8 FSW
1 x BG 7 CSCA

Consultant Social Worker
Childrens Services
Unit 5

Consultant Social Worker
Childrens Services
Unit 6

Consultant Social Worker
Childrens Services
Unit 7

Consultant Social Worker
Childrens Services
Unit 8

3 x BG10-12 SW
1 x BG8 FSW
1 x 0.5 BG 7 CSCA

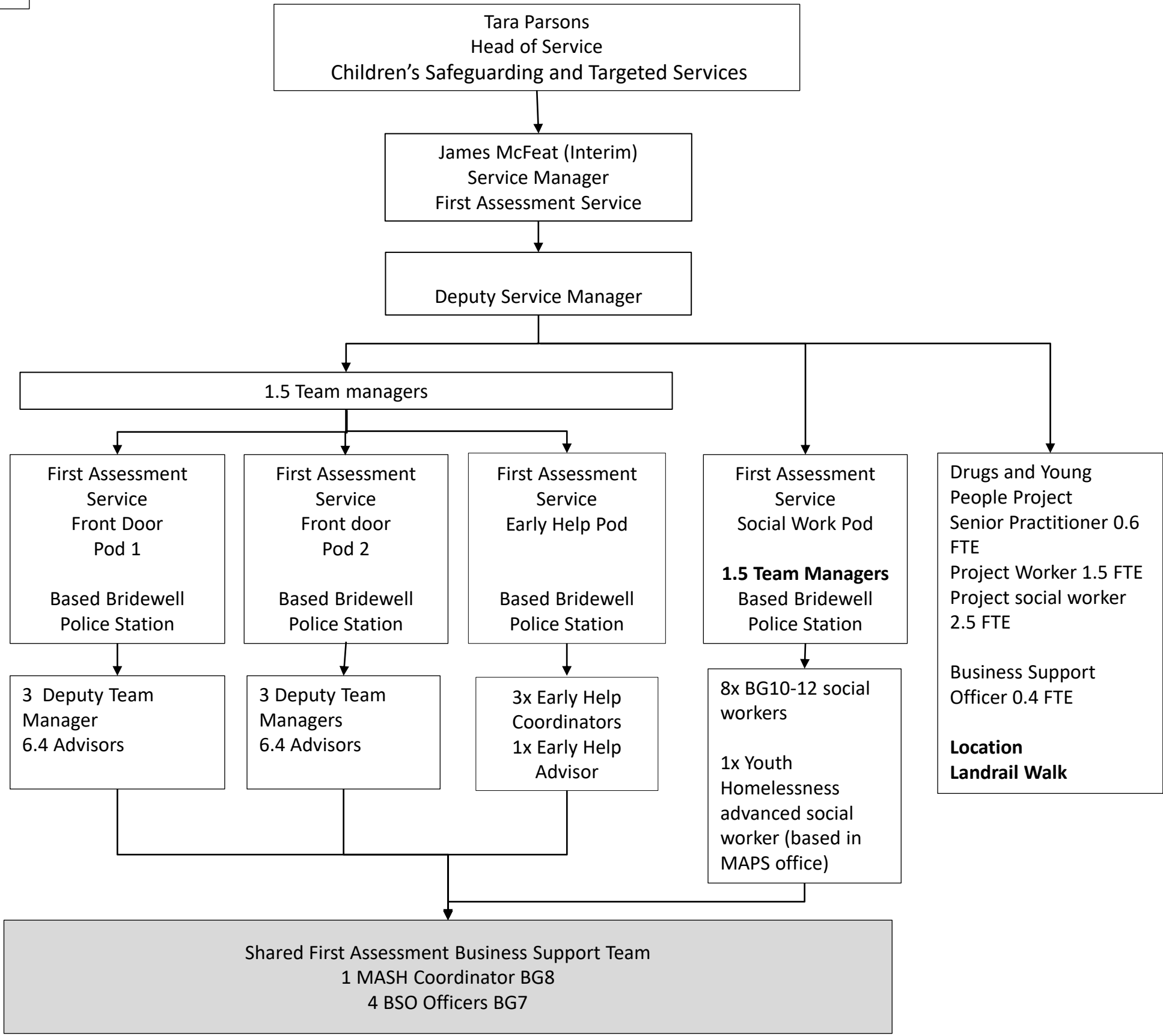
3 x BG10-12 SW
1 x BG8 FSW
1 x BG 9 CSCP PT
1 x BG 7 CSCA

3 x BG10-12 SW
1 x BG8 FSW
1 x 0.5 BG 7 CSCA

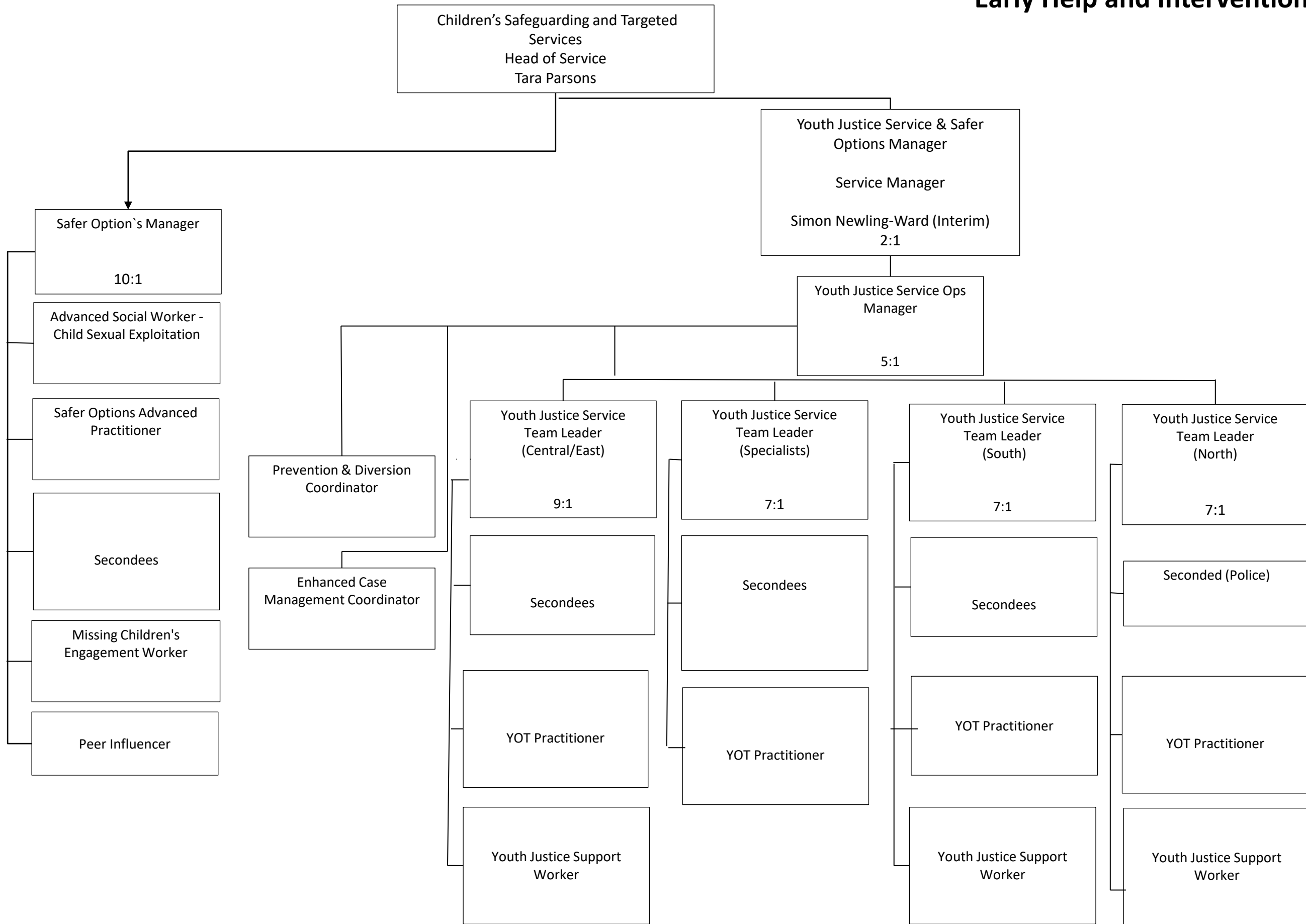
3 x BG10-12 SW
1 x BG8 FSW
1 x BG 7 CSCA

First Assessment Service

Location
Bridewell Police Station
1-2 Bridewell St
Bristol BS1 2AA



Early Help and Intervention





Head of Service
 Children’s Safeguarding and Targeted Services
 Tara Parsons

3 Area Localities Manager
 Families in Focus Service

Strengthening Families Team
 3 areas

SFT/ EOC Supervisor
 x 3

Strengthening Families Team
 whole family worker x 21
 BG10

Localities Support x 3
 BG8

Families in Focus Coordinator x 3

Partnership Manager x 3

Family Support Team

Family Support Supervisor x 3

Family Support Worker x 19
 BG8

Business support x 3

Team around School Social Worker x6
 BG11

Deputy Area Manager x3
 BG14

Dedicated Specialist Resources

Youth and Community worker x 7	Parenting Lead x 1 Practitioner x 10	DYPP worker x 1	CAMHS PMHS x 3	Domestic Abuse IDVA x 4	DWP Employment Specialist x 3	Adult mental Health Worker x 1	Senior Youth Practitioner x 3
--------------------------------	---	-----------------	----------------	-------------------------	-------------------------------	--------------------------------	-------------------------------

Purchase / Therapy / Support packages

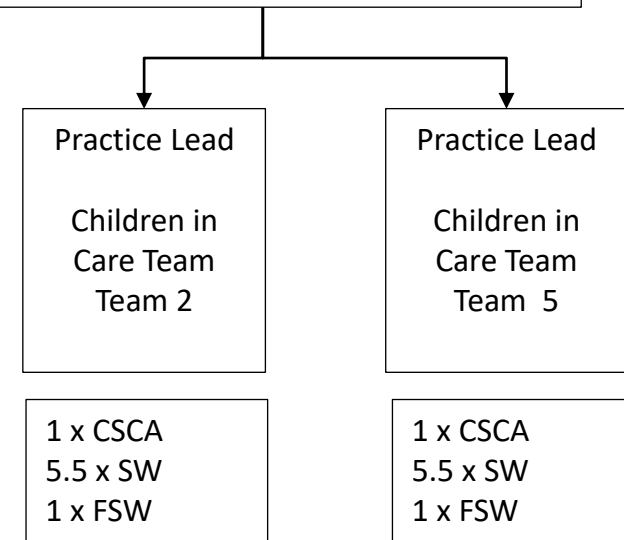
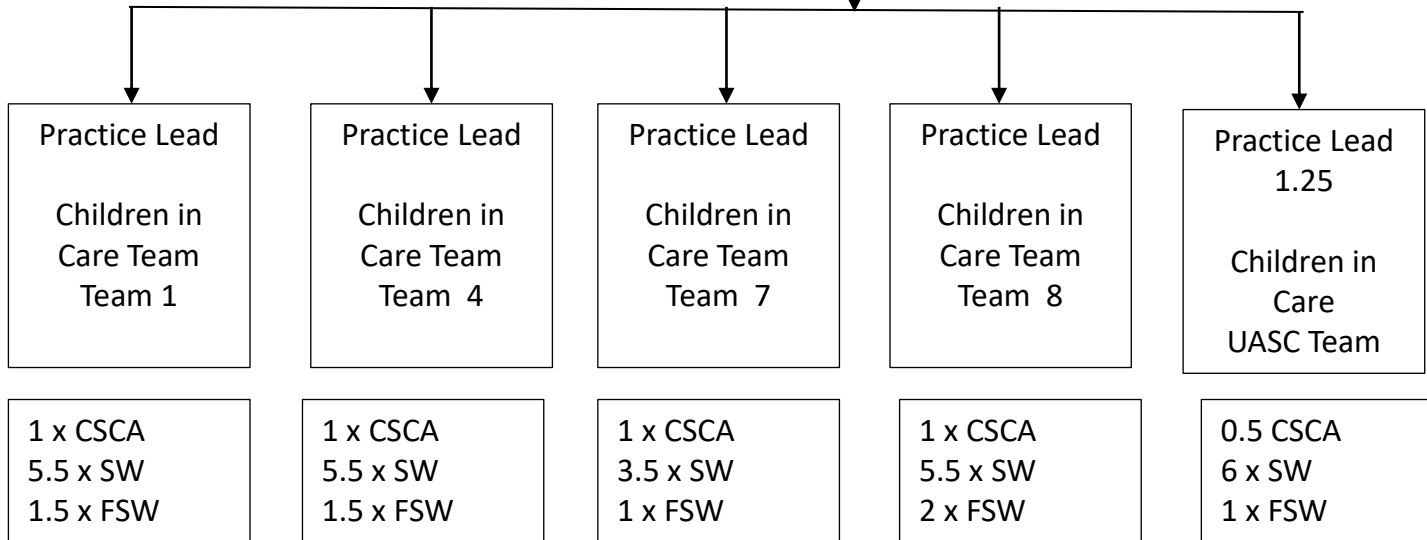
Location:
B-Bond,
Smeaton Road, BS1 6XN

PASS – Through Care Team Children in Care

Head of Service
Permanency & Specialist Services
James Beardall

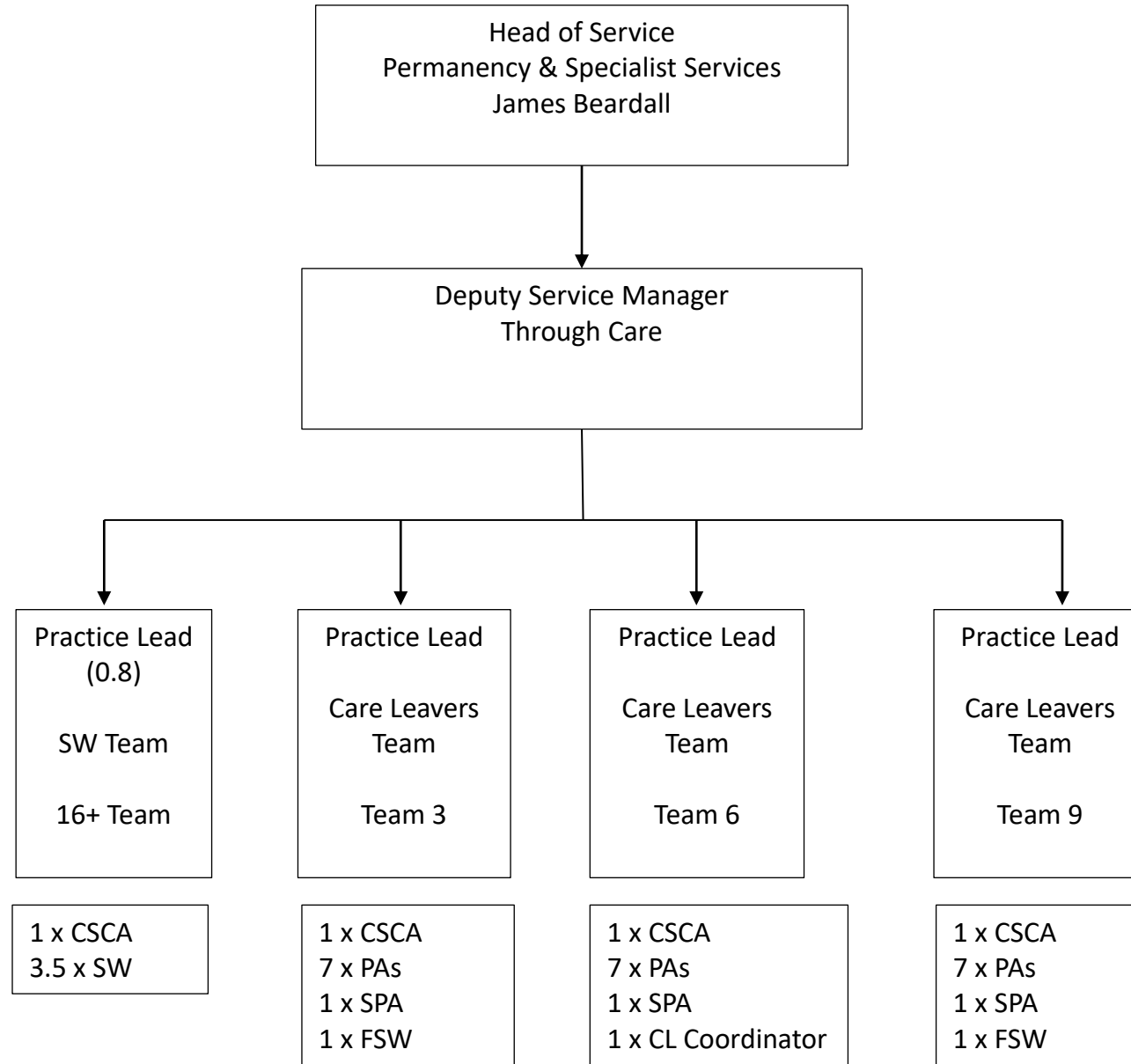
Service Manager
Through Care
Maria Finlayson

Deputy Service Manager
Through Care



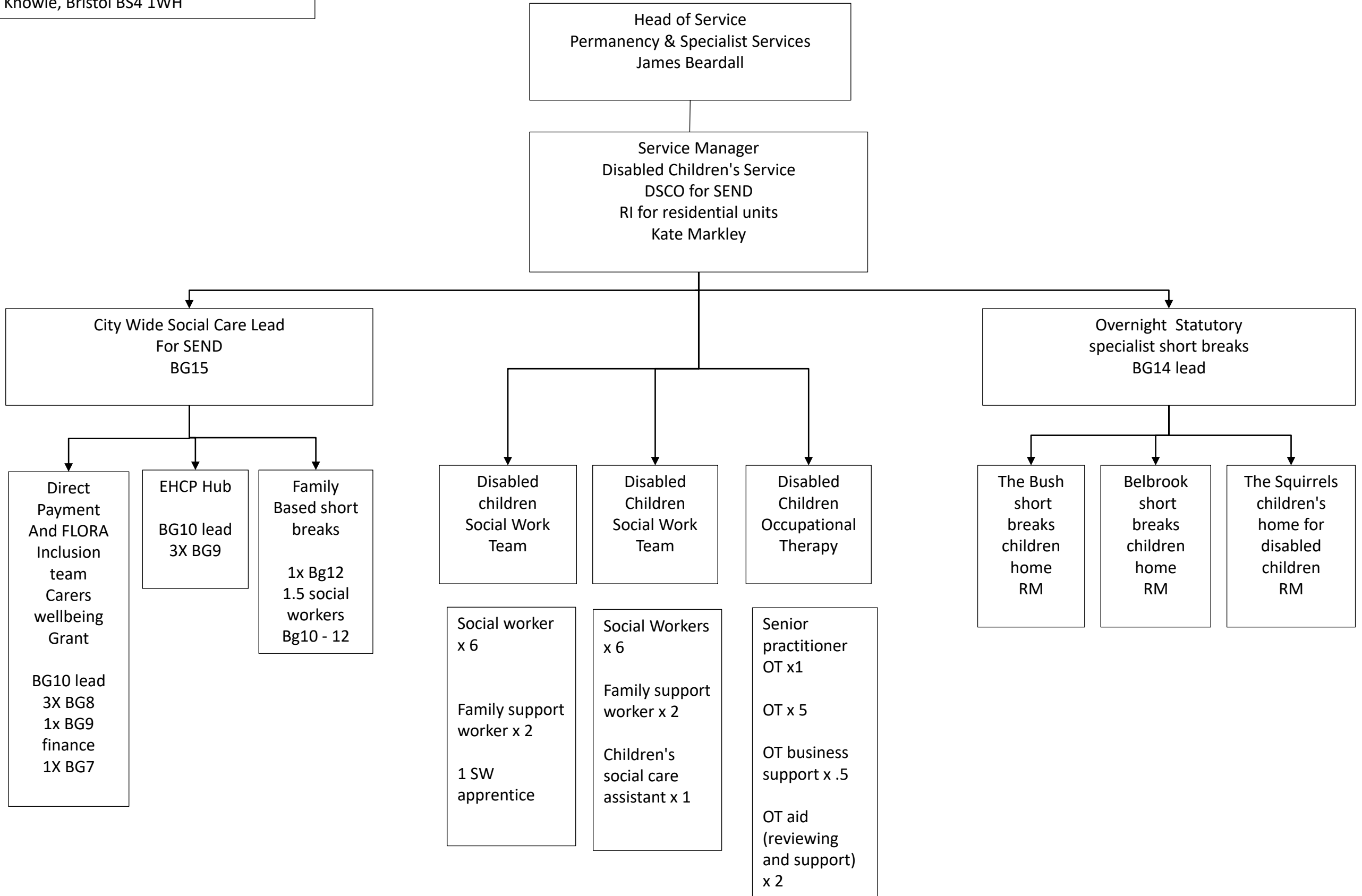
Location:
B-Bond,
Smeaton Road, BS1 6XN

PASS – Through Care Team 16+



PASS – Disabled Children's Team

Location:
5 Knowle Health Park, Downton Road,
Knowle, Bristol BS4 1WH



Fostering, Kinship, Adoption

Location:
B-Bond,
Smeaton Road, BS1 6XN

**Head of Service
Permanency & Specialist Services**
James Beardall

**Placement Services, Service
Manager**
Amanda Braund (Interim)

**Placement Services, Deputy Service
Manager**

**Fostering
Supervision and
support
Team 1**

1 FTE Team
Manager

7.8 FTE Social
Workers

Branchout
2 FTE Social
Workers

**Fostering
Supervision and
support
Team 2**

1 FTE Team
Manager

7 FTE Social
Workers

1 FTE Family
Support Worker

**Fostering
Recruitment and
Assessment
Team 3**

1 FTE Team
Manager

7 FTE Social
Workers

1 FTE Events and
Marketing
Coordinator

**Kinship and Special
Guardianship
Team 1**

1 FTE Team
Manager

6.6 FTE Social
Workers

1 FTE Family
Support Worker

1 FTE Finance and
Benefits Worker

**Kinship and Special
Guardianship
Team 2**

1.4 FTE Team
Manager

7.5 FTE Social
Workers

**Special
Guardianship
Support
Team 3**

0.6 FTE Team
Manager

4 FTE Social
Workers

1 FTE Family
Support Worker

1 FTE Children's
Social Care
Assistant

**Fostering Panel
Chair and
vice chair
Foster panel
members
(Casual Staff)**

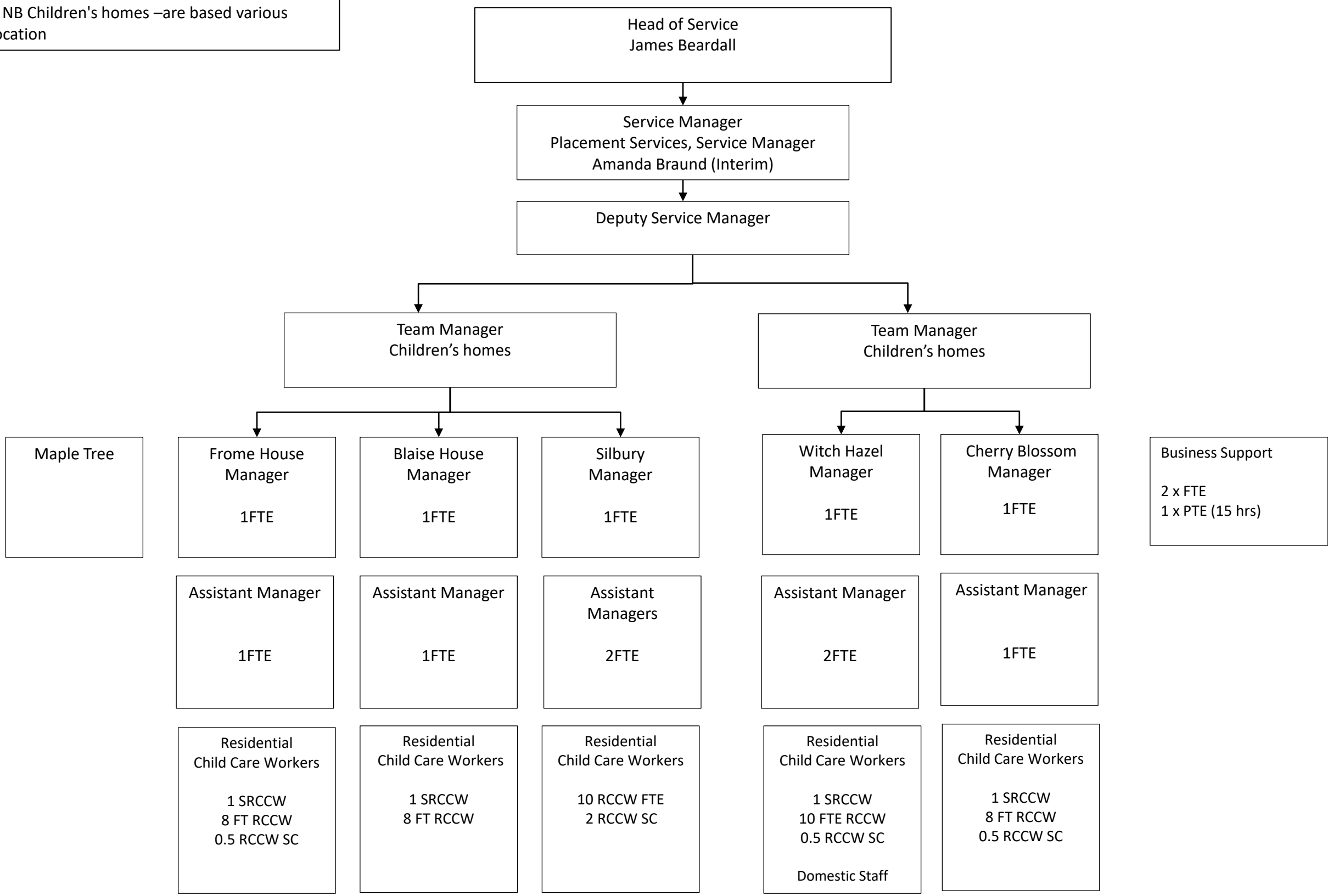
Independent Chair

Independent Vice-
Chair

X9 Panel
Members

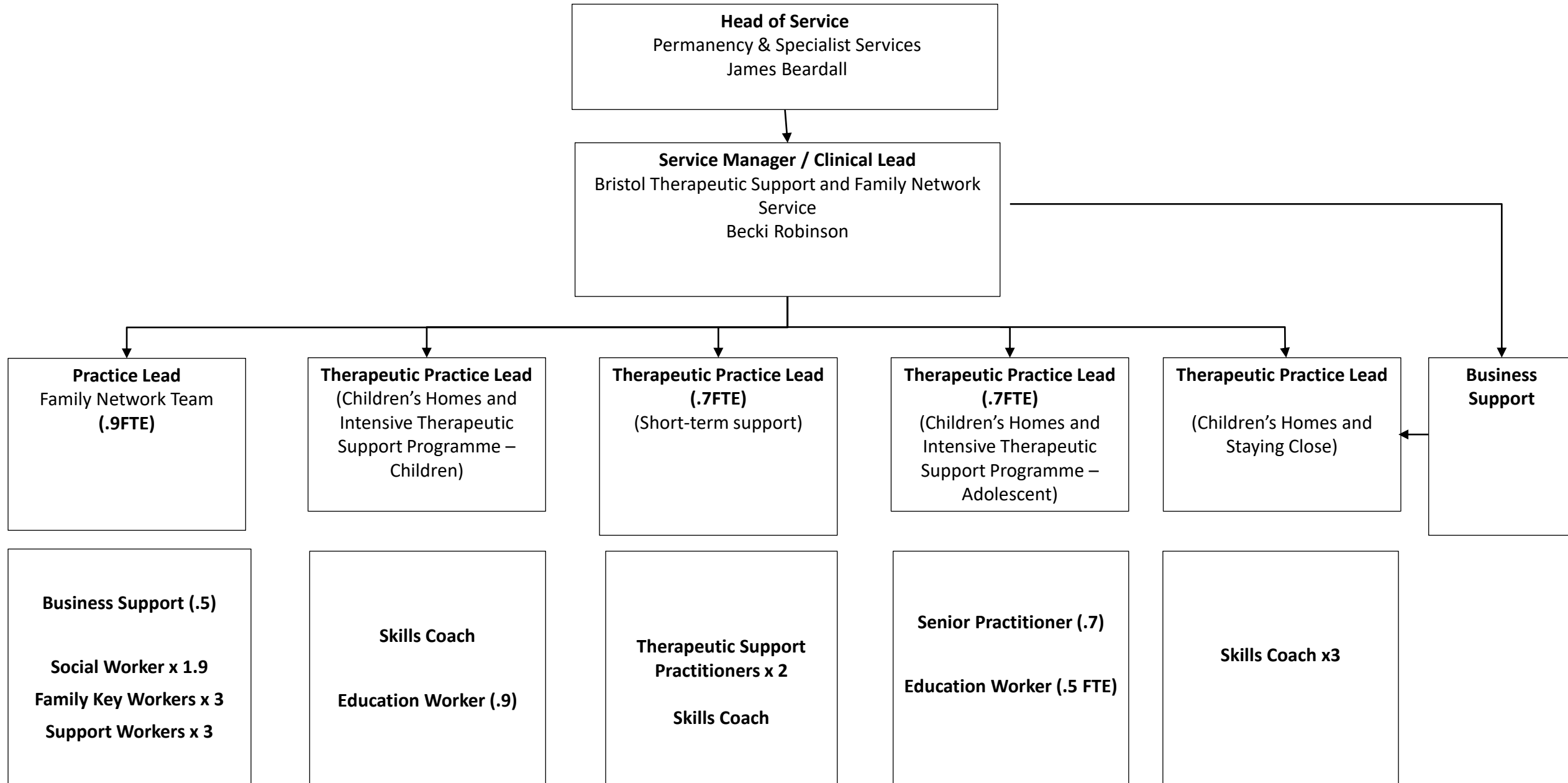
Children's Residential

Location:
B-Bond,
Smeaton Road, BS1 6XN
* NB Children's homes –are based various
location



PASS – Therapeutic Support and Family Network Service

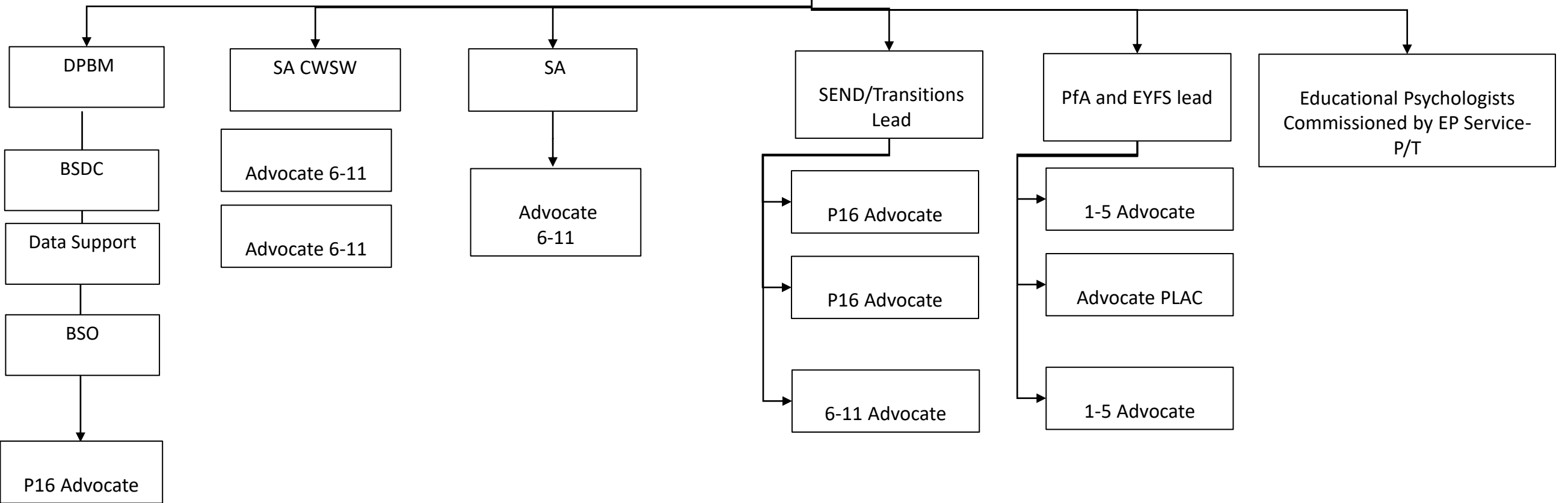
Location:
111 Capgrave Crescent, Broomhill,
Bristol, BS4 4TN



Location
Based at City Hall
College Green
Bristol
BS1 5TR

Head of Service
Permanency & Specialist Services
James Beardall

James Gregory
Virtual Headteacher
HOPE
(Interim)



* Sits within structure but part of common activities team

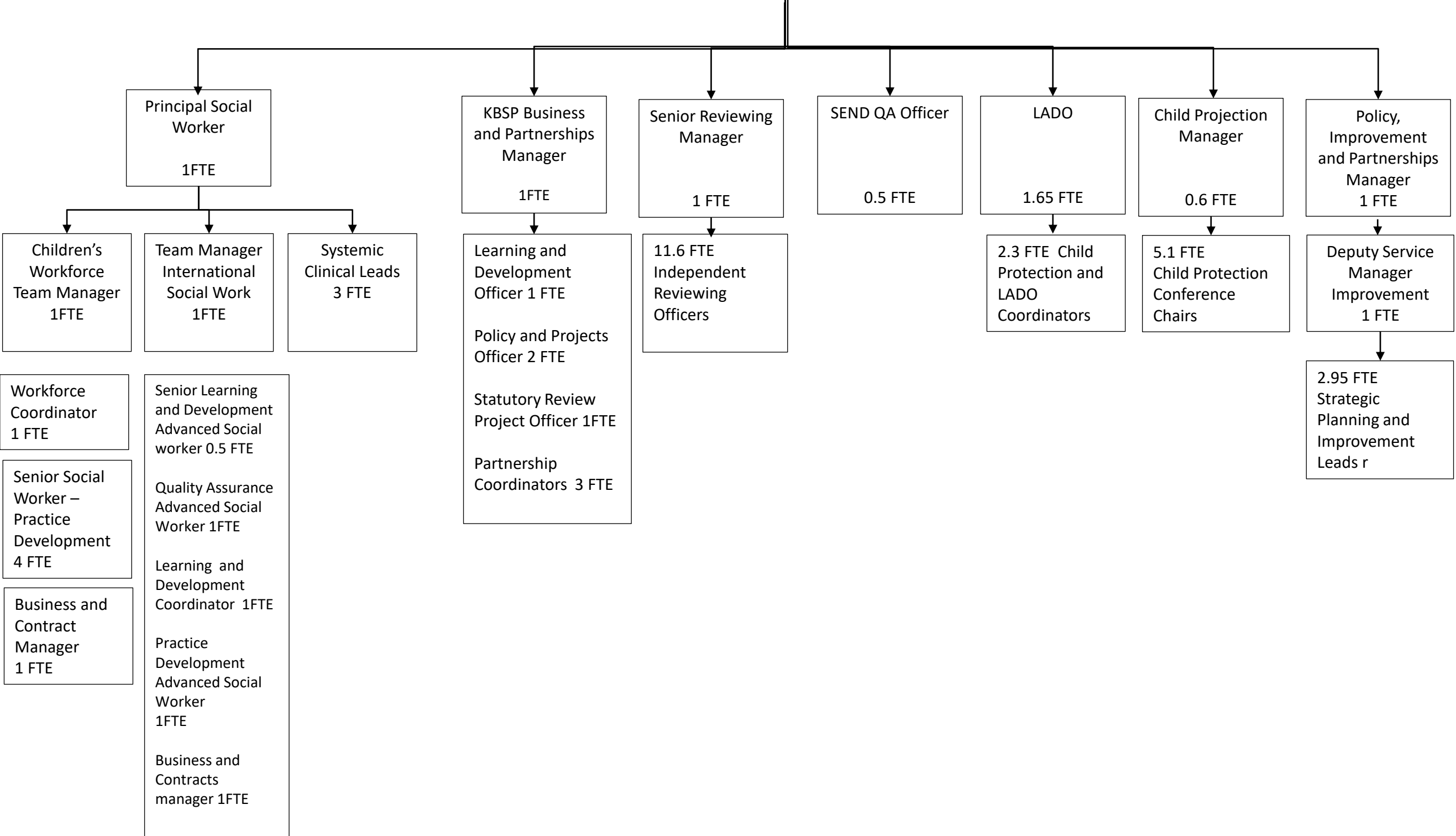
Safeguarding and Quality Assurance Teams

Locations:
 PSW, Children’s Workforce, QA officers, CP Conference Service and PIP
 City Hall, College Green, Bristol, BS1 5TR

Location for LADO:-
 Bridewell Police Station
 1-2 Bridewell St
 Bristol BS1 2AA

Location for IRO and Safer Options:-
 B-Bond Smeaton Road, BS1 6XN

Strategic Safeguarding and Quality Assurance
 Head of Service
 Becky Lewis - based at City Hall



Commissioning

Location
All staff based City Hall
College Green
Bristol
BS1 5TR

Head of Service
Childrens Commissioning
Gail Rogers

Senior Commissioning Manager,
Strategic Commissioning

Commissioning
Managers
6.8 FTE (incl.
2 x FTCs)

Senior
Quality and
Contracts
Officer 1FTE

Commissioning
Officers
4.5 FTE

Short Breaks
Coordinator
0.8 FTE

Specialist Commissioning Manager
Children's social care placements

Contract and
Quality
1FTE

Finance
and Data
Officer
1FTE

Project
Officer
1 FTE

Commissioning
Officer
1 FTE

Placement
Officers x 4

Business Support
2 FTE

Home to School
Transport Manager

SEND and Eligibility
Officer
Senior Home to
School Travel Officer
Escort and Volunteer
Coordinator
Finance and Data
Officer
Senior Quality
Assurance Officer

Home to School Transport

Location
Based at City Hall
College Green
Bristol
BS1 5TR

