

NOTE THE PROPERTY OF THIS DRAWING AND DESIGN IS VESTED IN CAPITA SYMONDS LIMITED AND MUST NOT BE COPIED OR REPRODUCED IN ANY WAY WITHOUT THEIR WRITTEN CONSENT

BASED ON ORDNANCE SURVEY MAPPING AND REPRODUCED BY CAPITA SYMONDS LTD LICENCE NO. 100026380 WITH THE PERMISSION OF THE CONTROLLER OF HER MAJESTY'S STATIONERY OFFICE CROWN COPYRIGHT

Avonmouth/Sevenside SFRA

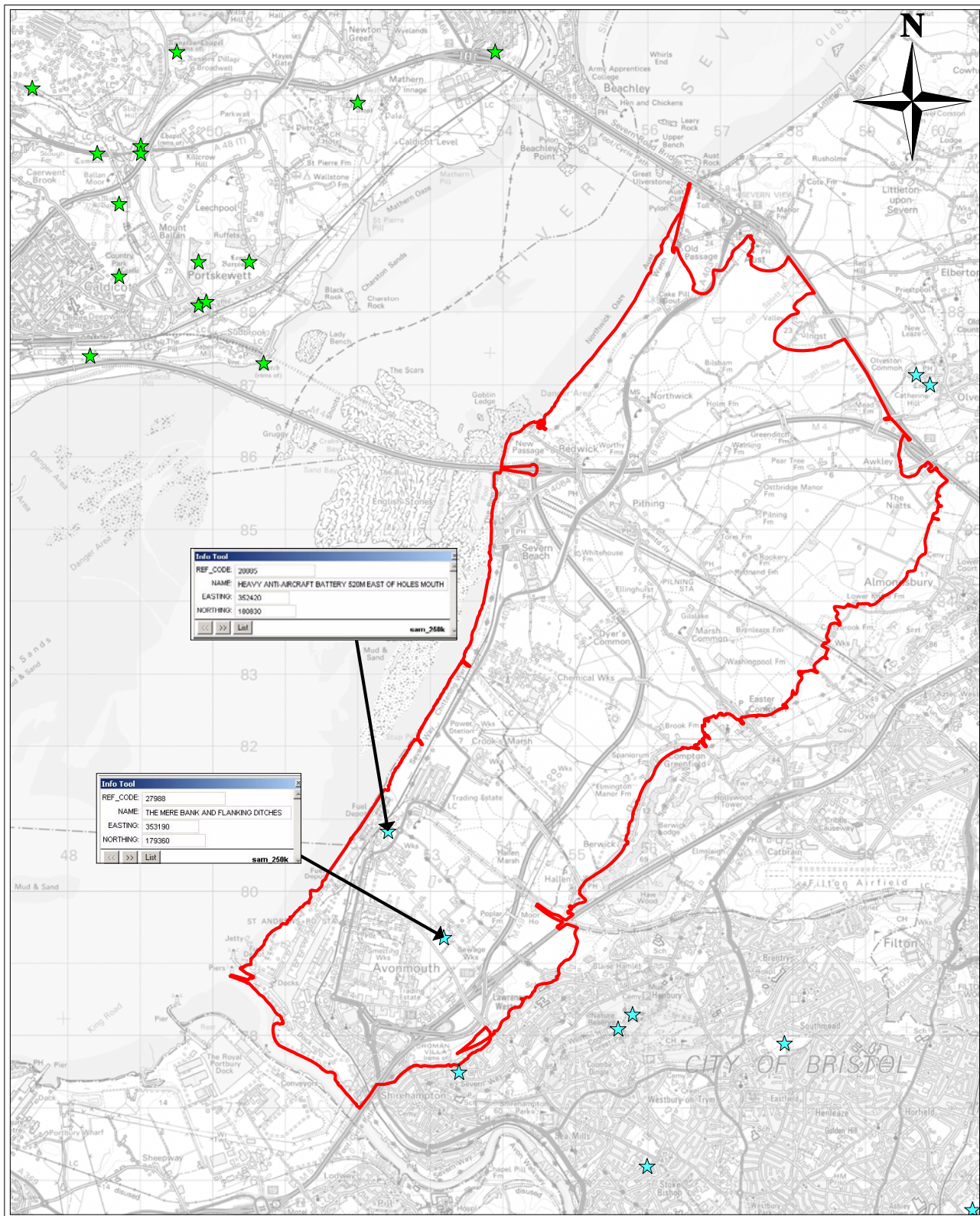
Environmental Designations
Ramsar
Figure 6.1

- Study Area
- RAMSAR
- RAMSAR_WA

BRISTOL CITY COUNCIL
SOUTH GLOUCESTERSHIRE COUNCIL
LOWER SEVERN DRAINAGE BOARD

CAPITA SYMONDS

DRAWN BY BW	CHECKED BY JF	PASSED BY AD	DATE 04/04/05	SCALES @ A4 1:80000	ISSUING OFFICE Bristol	DRAWING NUMBER CS002563_BRI022	REV 1
----------------	------------------	-----------------	------------------	------------------------	---------------------------	-----------------------------------	----------



NOTE THE PROPERTY OF THIS DRAWING AND DESIGN IS VESTED IN CAPITA SYMONDS LIMITED AND MUST NOT BE COPIED OR REPRODUCED IN ANY WAY WITHOUT THEIR WRITTEN CONSENT

BASED ON ORDNANCE SURVEY MAPPING AND REPRODUCED BY CAPITA SYMONDS LTD LICENCE NO. 100026380 WITH THE PERMISSION OF THE CONTROLLER OF HER MAJESTY'S STATIONERY OFFICE CROWN COPYRIGHT

Avonmouth/Sevenside SFRA

Scheduled Ancient Monuments (SAM)
Figure 6.2

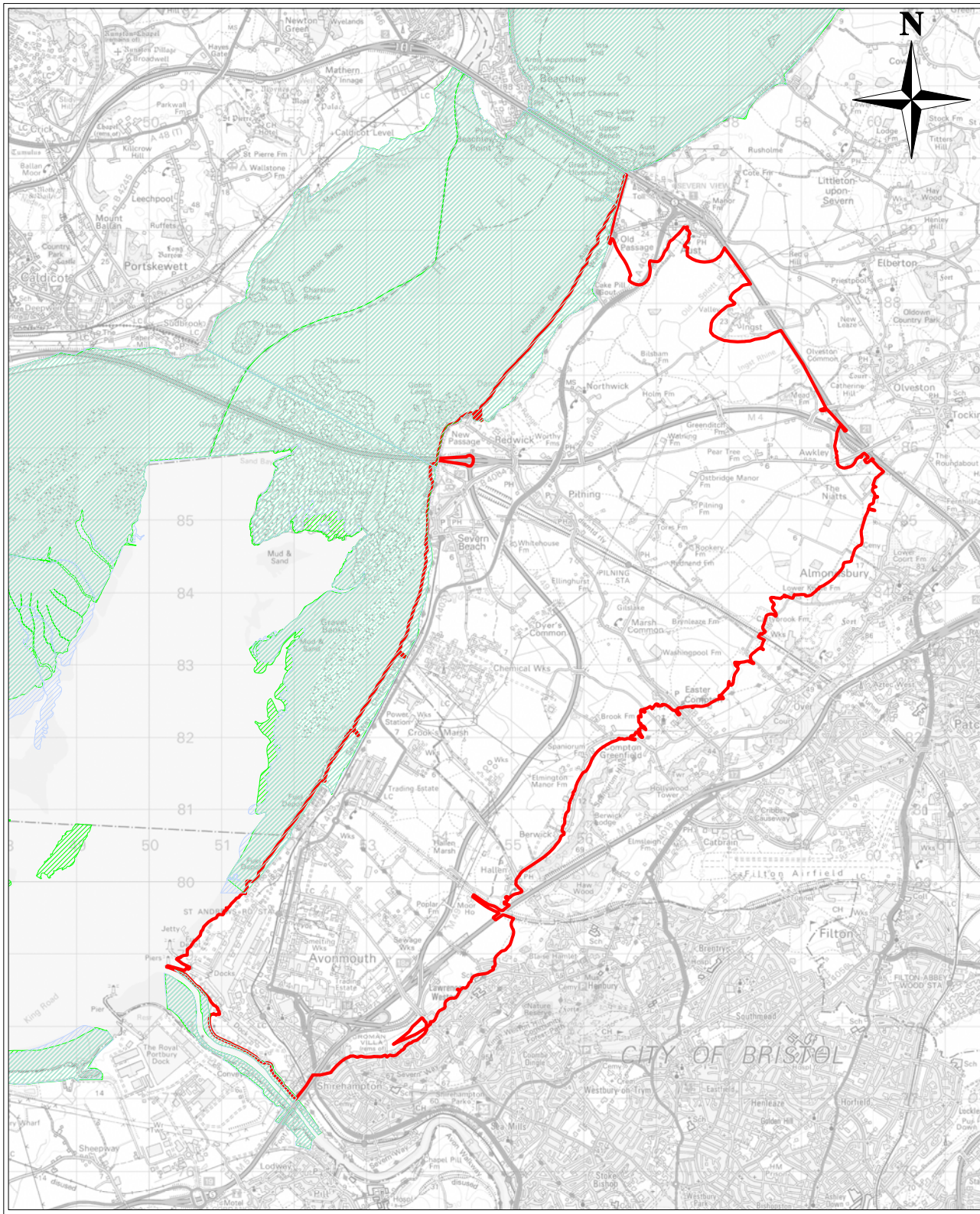
KEY

- Study Area
- ★ SAM
- ★ SAM_WA

BRISTOL CITY COUNCIL
SOUTH GLOUCESTERSHIRE COUNCIL
LOWER SEVERN DRAINAGE BOARD

CAPITA SYMONDS

DRAWN BY BW	CHECKED BY JF	PASSED BY AD	DATE 04/04/05	SCALES @ A4 1:80000	ISSUING OFFICE Bristol	DRAWING NUMBER CS002563_BRI023	REV 1
----------------	------------------	-----------------	------------------	------------------------	---------------------------	-----------------------------------	----------

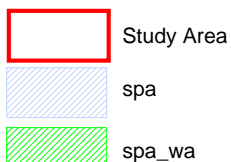


NOTE THE PROPERTY OF THIS DRAWING AND DESIGN IS VESTED IN CAPITA SYMONDS LIMITED AND MUST NOT BE COPIED OR REPRODUCED IN ANY WAY WITHOUT THEIR WRITTEN CONSENT

BASED ON ORDNANCE SURVEY MAPPING AND REPRODUCED BY CAPITA SYMONDS LTD LICENCE NO. 100026380 WITH THE PERMISSION OF THE CONTROLLER OF HER MAJESTY'S STATIONERY OFFICE CROWN COPYRIGHT

Avonmouth/Sevenside SFRA

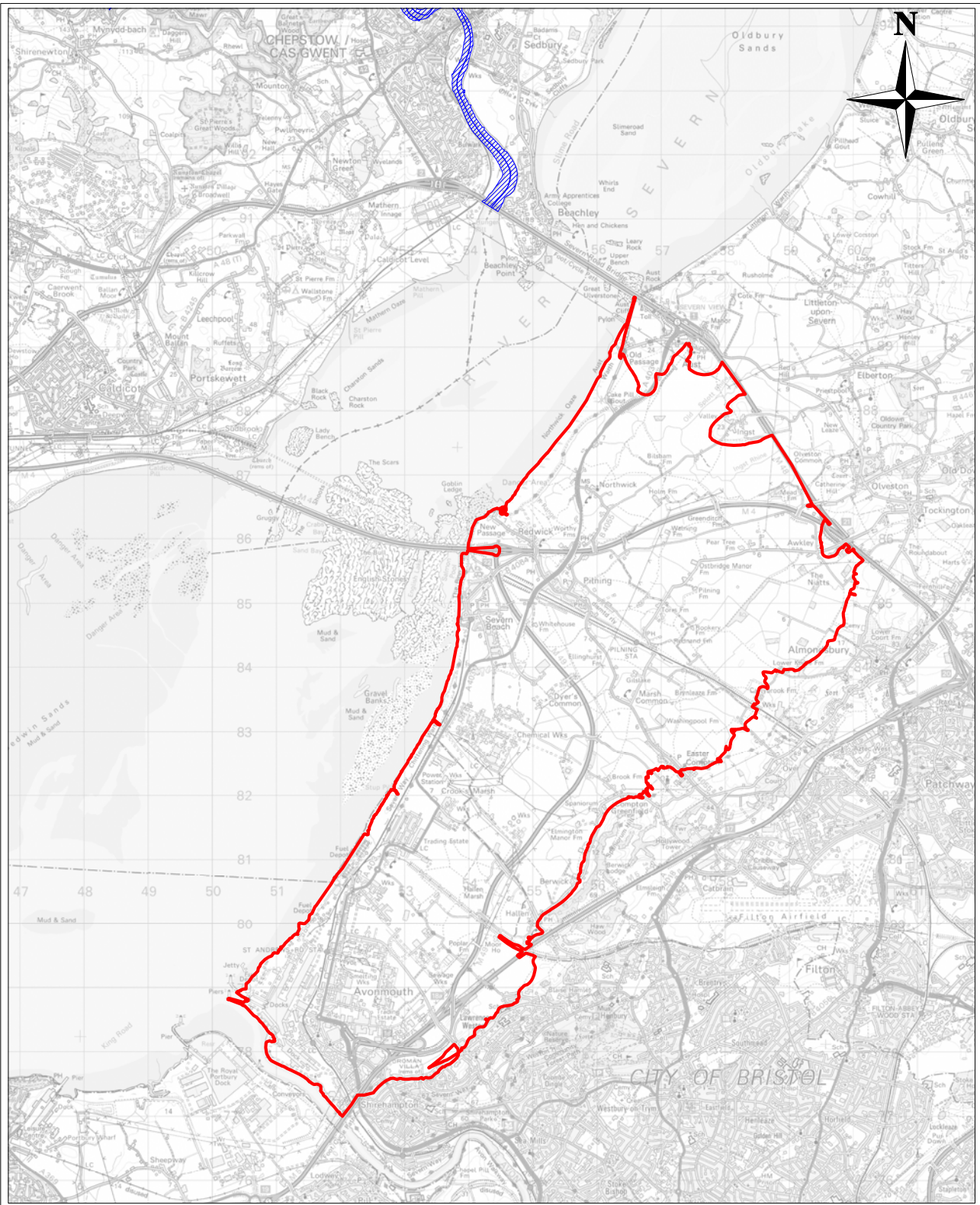
Special Protection Areas (SPA)
Environment Agency
Midlands Region
Figure 6.3



BRISTOL CITY COUNCIL
SOUTH GLOUCESTERSHIRE COUNCIL
LOWER SEVERN DRAINAGE BOARD

CAPITA SYMONDS

DRAWN BY BW	CHECKED BY JF	PASSED BY AD	DATE 04/04/05	SCALES @ A4 1:80000	ISSUING OFFICE Bristol	DRAWING NUMBER CS/002563_BRI024	REV 1
----------------	------------------	-----------------	------------------	------------------------	---------------------------	------------------------------------	----------



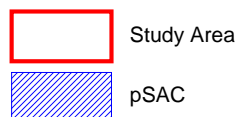
NOTE THE PROPERTY OF THIS DRAWING AND DESIGN IS VESTED IN CAPITA SYMONDS LIMITED AND MUST NOT BE COPIED OR REPRODUCED IN ANY WAY WITHOUT THEIR WRITTEN CONSENT

BASED ON ORDNANCE SURVEY MAPPING AND REPRODUCED BY CAPITA SYMONDS LTD LICENCE NO. 100026380 WITH THE PERMISSION OF THE CONTROLLER OF HER MAJESTY'S STATIONERY OFFICE CROWN COPYRIGHT

Avonmouth/Sevenside SFRA

Possible Special Area of Conservation (pSAC)
Environment Agency
Midlands Region
Figure 6.4

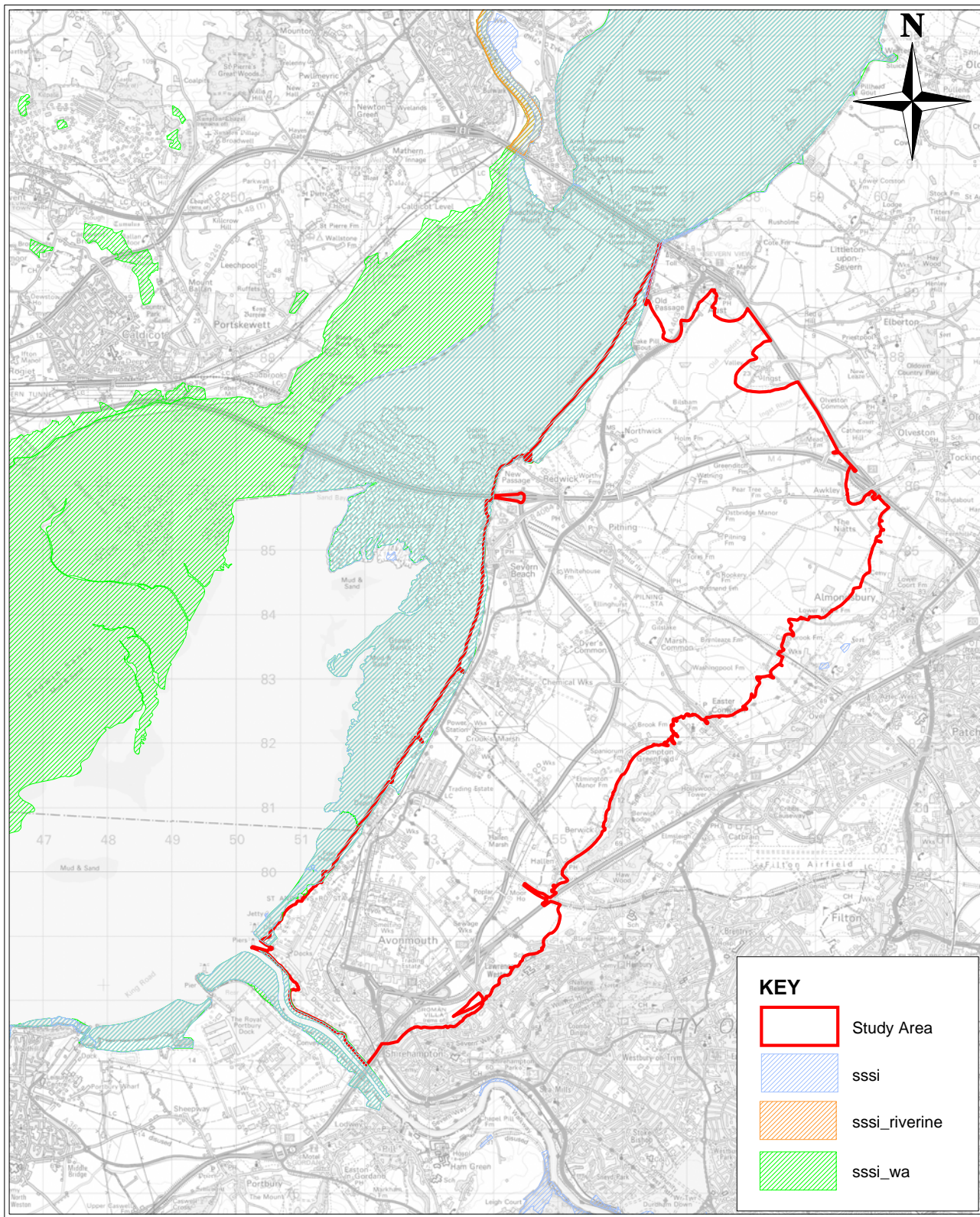
KEY



BRISTOL CITY COUNCIL
SOUTH GLOUCESTERSHIRE COUNCIL
LOWER SEVERN DRAINAGE BOARD

CAPITA SYMONDS

DRAWN BY BW	CHECKED BY JF	PASSED BY AD	DATE 04/04/05	SCALES @ A4 1:90000	ISSUING OFFICE Bristol	DRAWING NUMBER CS/002563_BRI025	REV 1
----------------	------------------	-----------------	------------------	------------------------	---------------------------	------------------------------------	----------



NOTE THE PROPERTY OF THIS DRAWING AND DESIGN IS VESTED IN CAPITA SYMONDS LIMITED AND MUST NOT BE COPIED OR REPRODUCED IN ANY WAY WITHOUT THEIR WRITTEN CONSENT

BASED ON ORDNANCE SURVEY MAPPING AND REPRODUCED BY CAPITA SYMONDS LTD LICENCE NO. 100026380 WITH THE PERMISSION OF THE CONTROLLER OF HER MAJESTY'S STATIONERY OFFICE CROWN COPYRIGHT

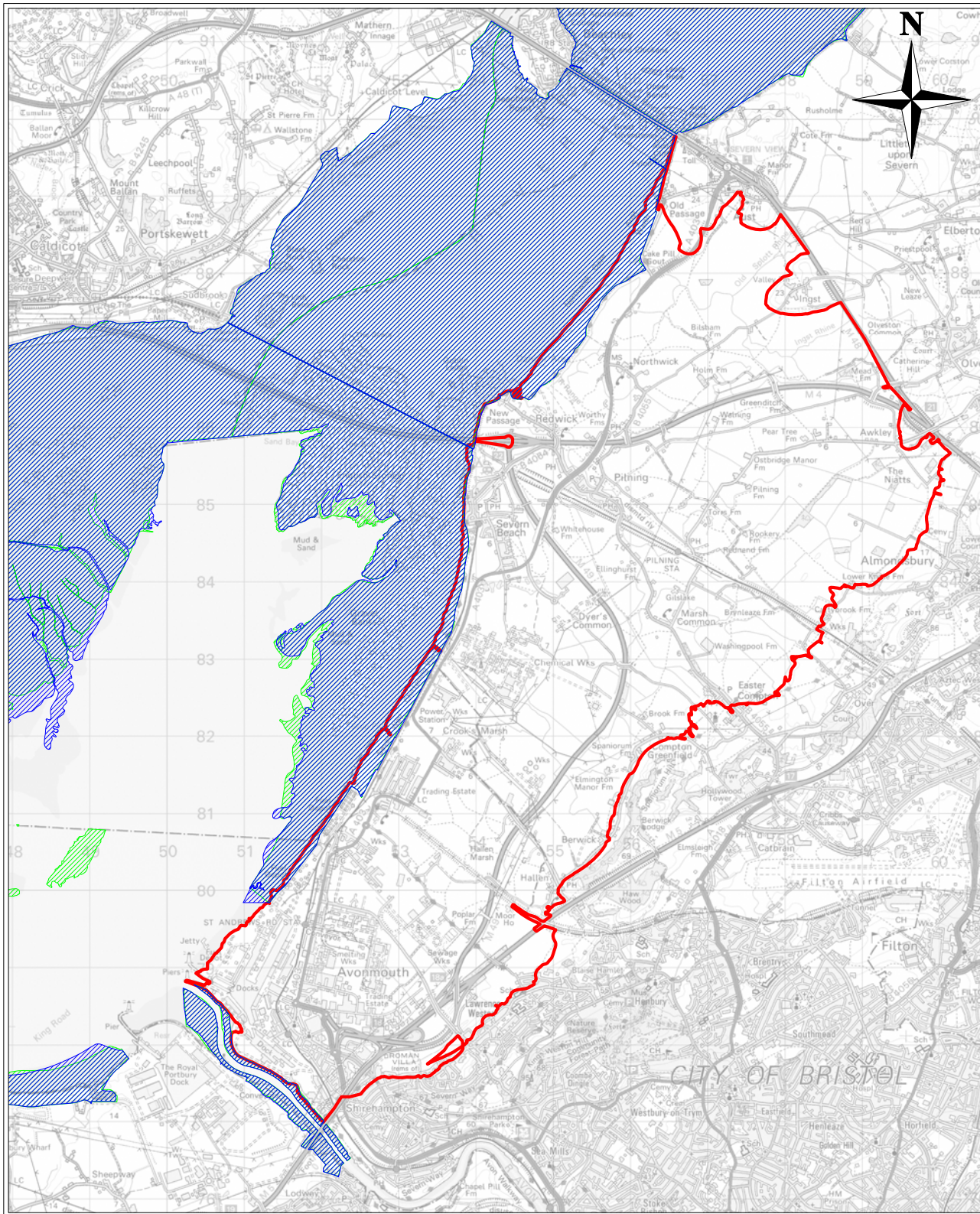
Avonmouth/Sevenside SFRA

Site of Special Scientific Interest (SSSI)
Environment Agency
Midlands Region
Figure 6.5

**BRISTOL CITY COUNCIL
SOUTH GLOUCESTERSHIRE COUNCIL
LOWER SEVERN DRAINAGE BOARD**

CAPITA SYMONDS

DRAWN BY BW	CHECKED BY JF	PASSED BY AD	DATE 04/04/05	SCALES @ A4 1:90000	ISSUING OFFICE Bristol	DRAWING NUMBER CS/002563_BRI026	REV 1
----------------	------------------	-----------------	------------------	------------------------	---------------------------	------------------------------------	----------



NOTE THE PROPERTY OF THIS DRAWING AND DESIGN IS VESTED IN CAPITA SYMONDS LIMITED AND MUST NOT BE COPIED OR REPRODUCED IN ANY WAY WITHOUT THEIR WRITTEN CONSENT

BASED ON ORDNANCE SURVEY MAPPING AND REPRODUCED BY CAPITA SYMONDS LTD LICENCE NO. 100026380 WITH THE PERMISSION OF THE CONTROLLER OF HER MAJESTY'S STATIONERY OFFICE CROWN COPYRIGHT

Avonmouth/Severnside SFRA

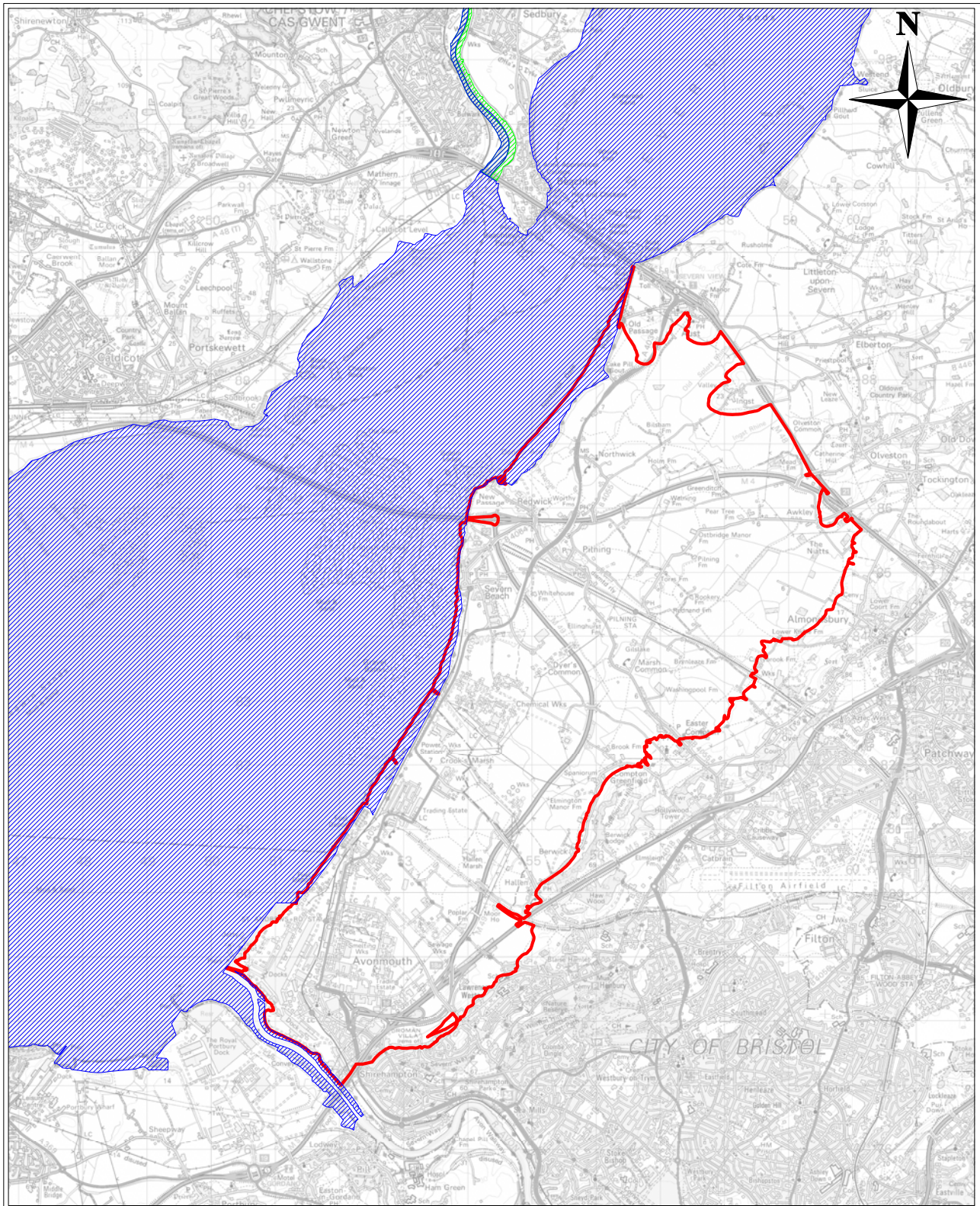
Special Protection Area (SPA)
Southwest Region
Environment Agency
Figure 6.6

- Study Area
- spa
- spa_wa

BRISTOL CITY COUNCIL
SOUTH GLOUCESTERSHIRE COUNCIL
LOWER SEVERN DRAINAGE BOARD

CAPITA SYMONDS

DRAWN BY BW	CHECKED BY JF	PASSED BY AD	DATE 04/04/05	SCALES @ A4 1:75000	ISSUING OFFICE Bristol	DRAWING NUMBER CS/002563_BRI027	REV 1
----------------	------------------	-----------------	------------------	------------------------	---------------------------	------------------------------------	----------

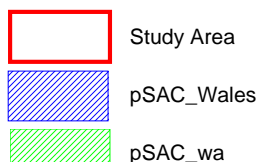


NOTE THE PROPERTY OF THIS DRAWING AND DESIGN IS VESTED IN CAPITA SYMONDS LIMITED AND MUST NOT BE COPIED OR REPRODUCED IN ANY WAY WITHOUT THEIR WRITTEN CONSENT

BASED ON ORDNANCE SURVEY MAPPING AND REPRODUCED BY CAPITA SYMONDS LTD LICENCE NO. 100026380 WITH THE PERMISSION OF THE CONTROLLER OF HER MAJESTY'S STATIONERY OFFICE CROWN COPYRIGHT

Avonmouth/Sevenside SFRA

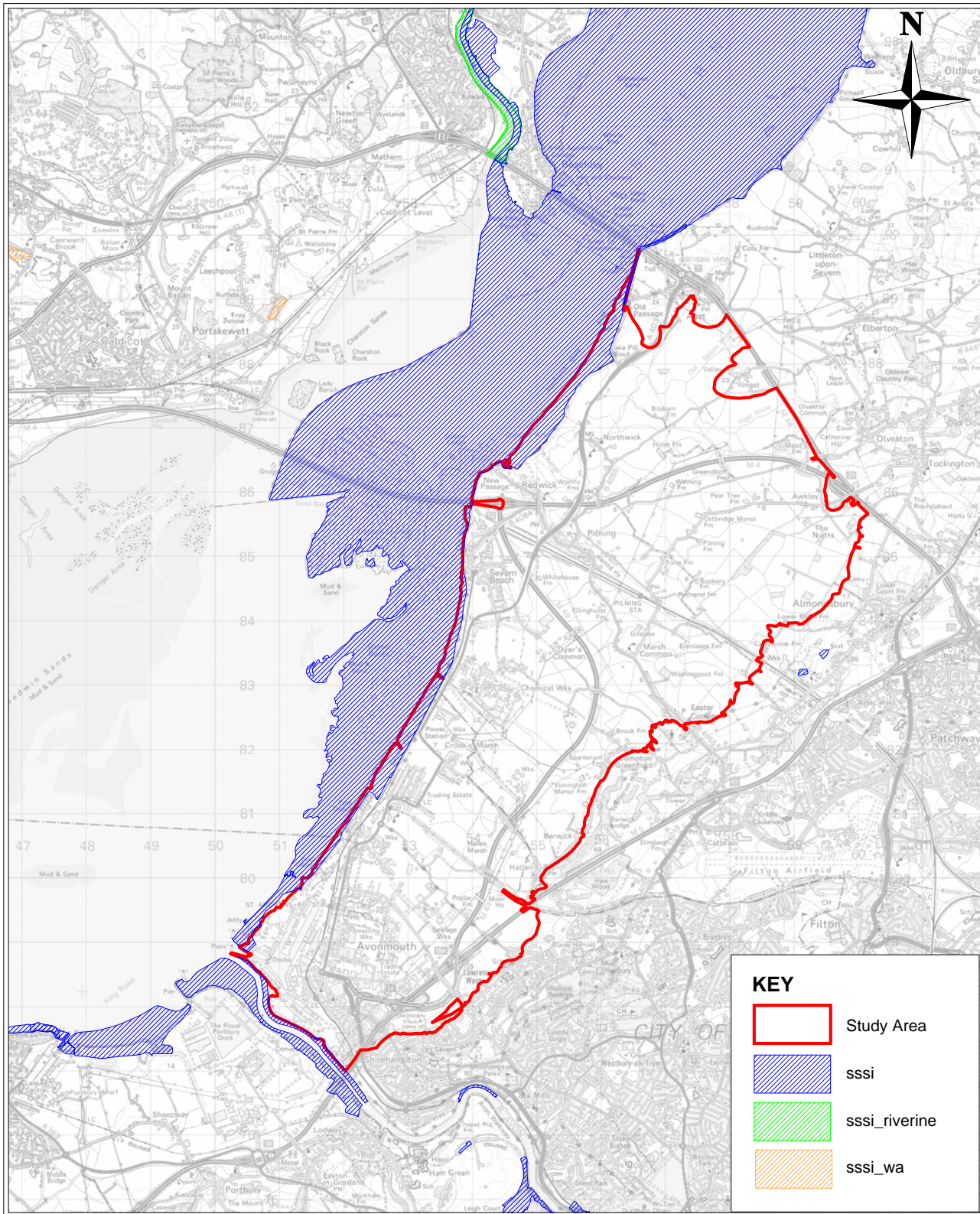
Possible Special Area of Conservation (pSAC)
Southwest Region
Environmental Agency
Figure 6.7



BRISTOL CITY COUNCIL
SOUTH GLOUCESTERSHIRE COUNCIL
LOWER SEVERN DRAINAGE BOARD

CAPITA SYMONDS

DRAWN BY BW	CHECKED BY JF	PASSED BY AD	DATE 04/04/05	SCALES @ A4 1:90000	ISSUING OFFICE Bristol	DRAWING NUMBER CS/002563_BRI028	REV 1
----------------	------------------	-----------------	------------------	------------------------	---------------------------	------------------------------------	----------



NOTE THE PROPERTY OF THIS DRAWING AND DESIGN IS VESTED IN CAPITA SYMONDS LIMITED AND MUST NOT BE COPIED OR REPRODUCED IN ANY WAY WITHOUT THEIR WRITTEN CONSENT

BASED ON ORDNANCE SURVEY MAPPING AND REPRODUCED BY CAPITA SYMONDS LTD LICENCE NO. 100026380 WITH THE PERMISSION OF THE CONTROLLER OF HER MAJESTY'S STATIONERY OFFICE CROWN COPYRIGHT

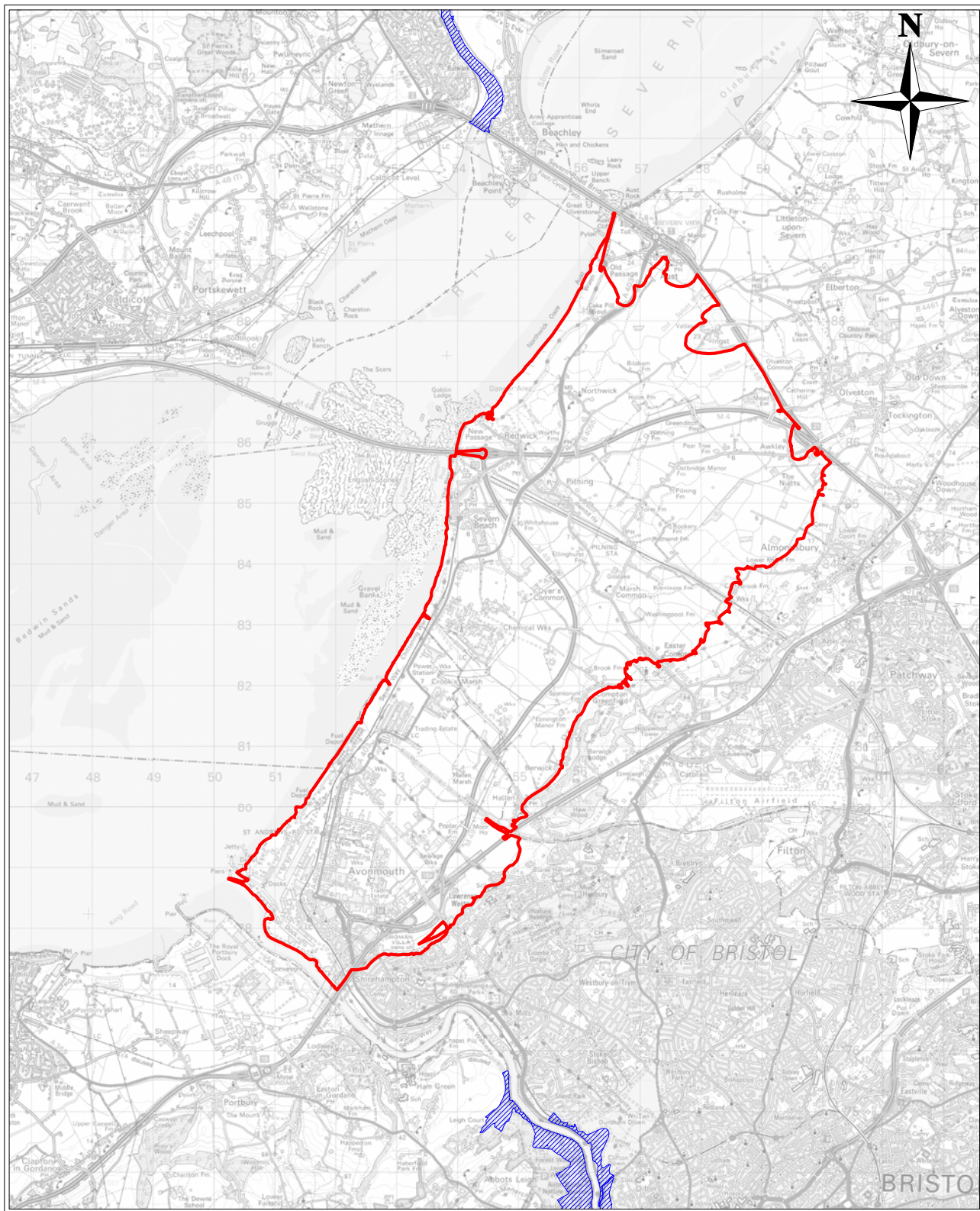
Avonmouth/Sevenside SFRA

Site of Special Scientific Importance (SSSI)
Southwest Region
Environment Agency
Figure 6.8

BRISTOL CITY COUNCIL
SOUTH GLOUCESTERSHIRE COUNCIL
LOWER SEVERN DRAINAGE BOARD

CAPITA SYMONDS

DRAWN BY	CHECKED BY	PASSED BY	DATE	SCALES @ A4	ISSUING OFFICE	DRAWING NUMBER	REV
BW	JF	AD	04/04/05	1:90000	Bristol	CS/002563_BRI029	1



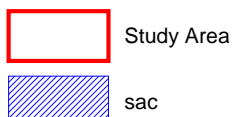
NOTE THE PROPERTY OF THIS DRAWING AND DESIGN IS VESTED IN CAPITA SYMONDS LIMITED AND MUST NOT BE COPIED OR REPRODUCED IN ANY WAY WITHOUT THEIR WRITTEN CONSENT

BASED ON ORDNANCE SURVEY MAPPING AND REPRODUCED BY CAPITA SYMONDS LTD LICENCE NO. 100026380 WITH THE PERMISSION OF THE CONTROLLER OF HER MAJESTY'S STATIONERY OFFICE CROWN COPYRIGHT

Avonmouth/Sevenside SFRA

Special Area of Conservation (SAC)
Southwest Region
Environment Agency
Figure 6.9

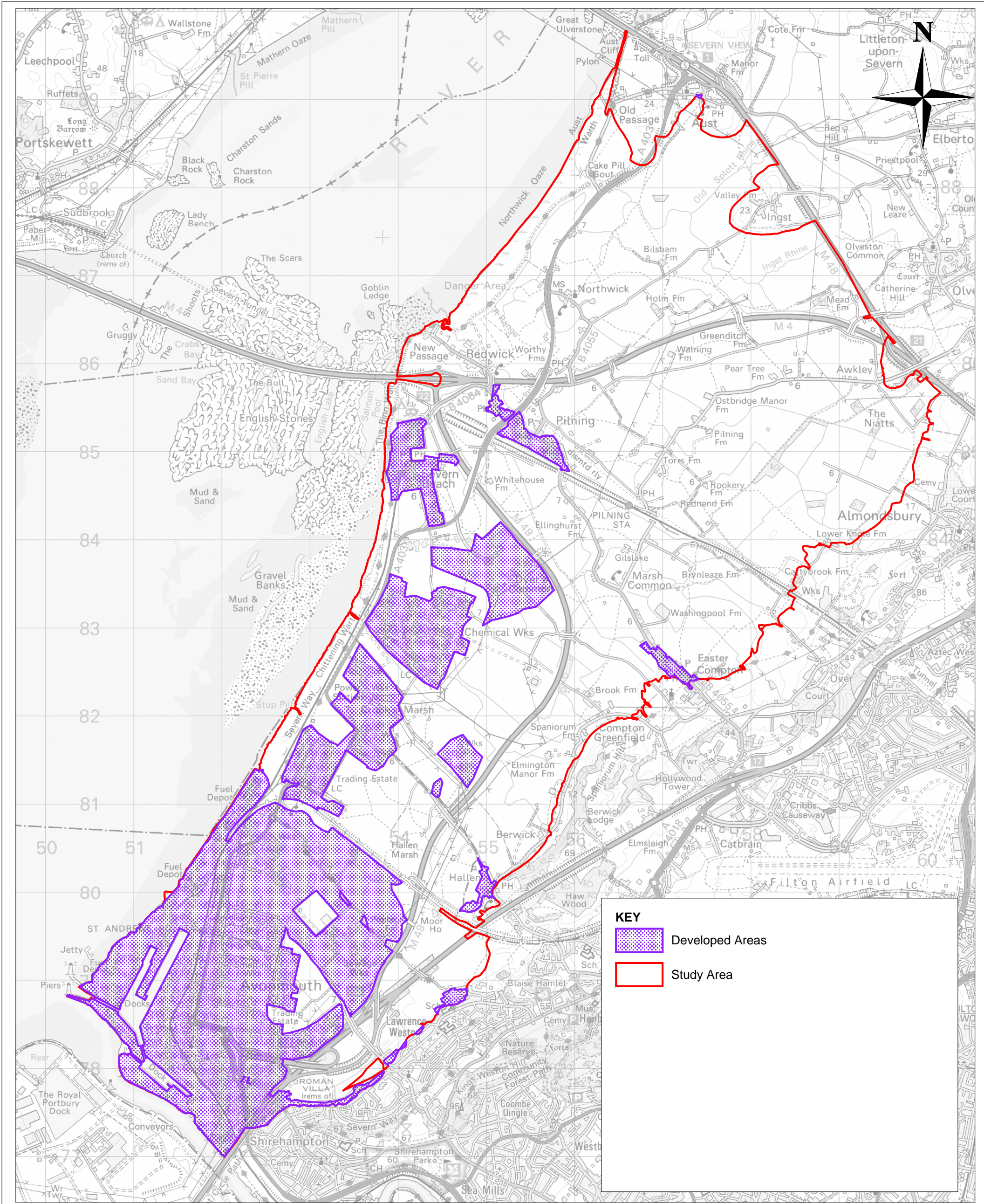
KEY



BRISTOL CITY COUNCIL
SOUTH GLOUCESTERSHIRE COUNCIL
LOWER SEVERN DRAINAGE BOARD

CAPITA SYMONDS

DRAWN BY BW	CHECKED BY JF	PASSED BY AD	DATE 04/04/05	SCALES @ A4 1:95000	ISSUING OFFICE Bristol	DRAWING NUMBER CS/002563_BRI030	REV 1
----------------	------------------	-----------------	------------------	------------------------	---------------------------	------------------------------------	----------



NOTE THE PROPERTY OF THIS DRAWING AND DESIGN IS VESTED IN CAPITA SYMONDS LIMITED AND MUST NOT BE COPIED OR REPRODUCED IN ANY WAY WITHOUT THEIR WRITTEN CONSENT

BASED ON ORDNANCE SURVEY MAPPING AND REPRODUCED BY CAPITA SYMONDS LTD LICENCE NO. 100026380 WITH THE PERMISSION OF THE CONTROLLER OF HER MAJESTY'S STATIONERY OFFICE CROWN COPYRIGHT

Avonmouth/Sevenside SFRA - January 2007

Avonmouth Sevenside Developed Areas
Figure 6.10

BRISTOL CITY COUNCIL
SOUTH GLOUCESTERSHIRE COUNCIL
LOWER SEVERN DRAINAGE BOARD

CAPITA SYMONDS

DRAWN BY	CHECKED BY	PASSED BY	DATE	SCALES @ A3	ISSUING OFFICE	DRAWING NUMBER	REV
ML	RS	AC	04/01/07	1:40000	Bristol	CS002563_BRI031	2