

# How your council tax is spent

**Council tax pays for local services, like libraries, schools, emergency services, rubbish collection, streetlights and much more.**

Council tax is charged to the household. It is based on the value of the property and not on what the household earns. So the amount of council tax to pay depends on which property band your home is in.

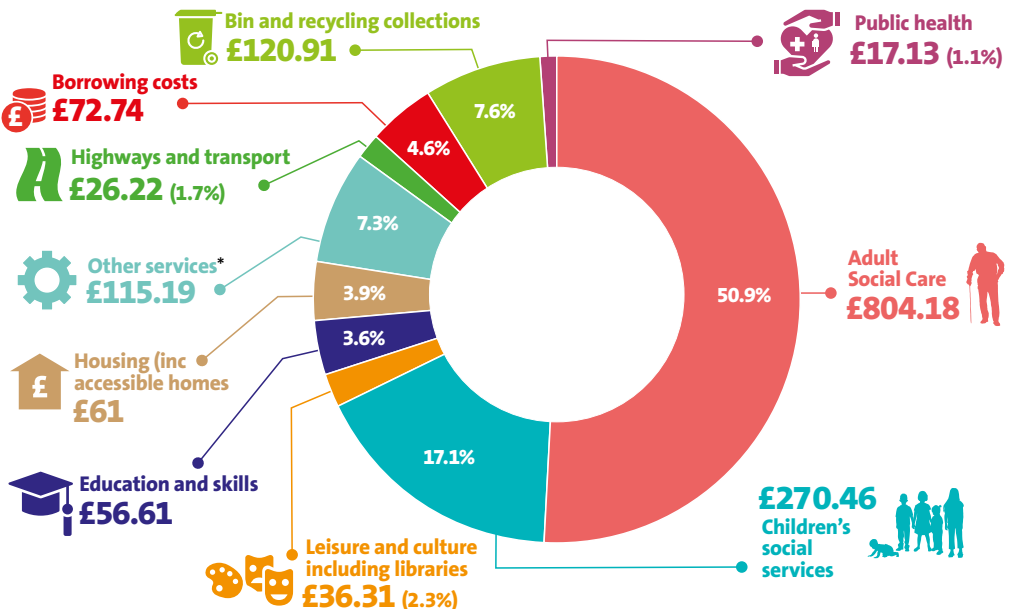
Most of council tax goes to the local authority, Bristol City Council, to spend on local services but parts also go to the Avon and Somerset Police and Crime Commissioner and the Avon Fire Authority.

Visit [bristol.gov.uk/council-tax-explained](https://bristol.gov.uk/council-tax-explained) for their spending plans.

The council also receives income from business rates and government grants, as well as fees and charges, all of which contribute towards the cost of providing council services.

## Average amount (£) spent per household on council services

The council receives around 56 per cent of its core funding from council tax. The net revenue budget, which is for core day-to-day services, for 2022 to 2023 is £431.1 million. Of this, council tax income contributes £243.2 million. The chart below shows how your council tax is used based on an estimated average cost per household.



\*Council tax also contributes to other services, including democratic services, electoral registration, coroner services, benefits services, council tax and business rates administration, collection, and increases in inflation.