



Allocation Statement for Air Balloon Hill Primary School - September 2017

As Air Balloon Hill Primary School was oversubscribed, the criteria stated in the booklet 'A Guide for parents and carers on applying for a primary school place for the school year 2017-2018' have been applied to allocate the places that are available at the school.

216 on-time applications (*106 x 1st preferences, 62 x 2nd preferences, 48 x 3^d preferences*) have been received for Air Balloon Hill Primary School, which has an Admission Number of **120**.

How the Initial Allocation of Places was made

The **120** places have been offered to the following children:

1. Those children who are defined as 'Children in Care'; or children who were previously in care, but immediately after being in care became subject to an adoption, child arrangements, or special guardianship order. (**1** place).
2. Those children with siblings already at Air Balloon Hill Primary School who will still be on roll in September 2017. (**44** places)
3. Those children living closest to Air Balloon Hill Primary School as measured in a direct line from the home address to the school (**75** places)

The furthest distance offered a place in this category was **1.535 km**.

CLASS SIZE PREJUDICE APPEALS - Effects of Infant Class Size Legislation.

Appeals for Air Balloon Hill Primary School will be heard on the basis of Class Size Prejudice. The school has four Reception classes each containing 30 children.

Guidance on Class Size Prejudice Appeals is available on the School Admissions website.

You should be aware that since the introduction of Infant Class Size Legislation in 2000, no appeals have been upheld in the parents' favour for this school.

2nd Round Allocation

As at the 19th May 2017, **2** places had become available for reallocation. At this point there were 14 applicants still pursuing a place.

The school's published admissions criteria were applied and the 2 available places were offered to:

1. Those children who are defined as 'Children in Care'; or children who were previously in care, but immediately after being in care became subject to an adoption, child arrangements, or special guardianship order. (**0** places)
2. Those children with siblings already at Air Balloon Hill Primary School and who will still be there in September 2017. (**2** places)

The furthest distance offered a place in this category was **1.982 Km**.

Allocation Statement for Bannerman Road Community Academy and Children's Centre - September 2017 – 2nd round

As at the 19th May 2017, Bannerman Road Community Academy became oversubscribed. **4** places had become available for reallocation at the school. At this stage 8 applicants were still pursuing a place at the school.

The school's published admissions criteria were applied and the places were offered as follows;

1. Children in the care of the Local Authority. (0 places)
2. Those children with siblings of statutory school age already at Bannerman Road Community Academy and who will still be on roll in September 2017. (3 places)
3. Those children living closest to Bannerman Road Community Academy as measured in a direct line from the home address to the school. (1 place)

The furthest distance offered a place in this category was **0.167 km**

CLASS SIZE PREJUDICE APPEALS - Effects of Infant Class Size Legislation. Appeals for Bannerman Road Community Academy and Children's Centre will be heard on the basis of Class Size Prejudice. Key Stage 1 at the school is organised with 2 Reception classes, and 4 classes covering Year 1 and Year 2.

You should be aware that since the introduction of Infant Class Size Legislation in 2000, no appeals have been upheld in the parents' favour for this school.

There has been an increasing requirement for places in some areas of Bristol.

The Council has worked to increase the supply of places and this year supply and demand are about equal which leaves very few unallocated places across the city.

You can see how places have been allocated for each school in Bristol by visiting: www.bristol.gov.uk/schooladmissions



Allocation Statement for Brentry Primary School - September 2017

As Brentry Primary School was oversubscribed, the criteria stated in the booklet '*A Guide for parents and carers on applying for a primary school place for the school year 2017-2018*' have been applied to allocate the places that are available at the school.

160 on-time applications (*70 x 1st preferences, 54 x 2nd preferences, 36 x 3rd preferences*) have been received for Brentry Primary School, which has an Admission Number of **30**.

How the Initial Allocation of Places was made

The **30** places have been offered to the following children:

1. Those children who are defined as 'Children in Care'; or children who were previously in care, but immediately after being in care became subject to an adoption, child arrangements, or special guardianship order. (**0** place).
2. Those children with siblings already at Brentry Primary School who will still be on roll in September 2017. (**15** places)
3. Those children living closest to Brentry Primary School as measured in a direct line from the home address to the school (**15** places)

The furthest distance offered a place in this category was **485 meters**.

There were 2 children living at an identical distance of 485 meters to the school. As a result a random allocation was made by a Solicitor independent of the School Admission Team drawing the successful applicant's name from a hat.

CLASS SIZE PREJUDICE APPEALS - Effects of Infant Class Size Legislation.

Appeals for Brentry Primary School will be heard on the basis of Class Size Prejudice. The school has 1 Reception class containing 30 children.

Guidance on Class Size Prejudice Appeals is available on the School Admissions website.

You should be aware that since the introduction of Infant Class Size Legislation in 2000, no appeals have been upheld in the parents' favour for this school.

See Below for details of subsequent allocations of places

Second Round Allocation for Breentry Primary School - September 2017

As at 19th May 2017 1 place had become available for reallocation at Breentry Primary School. At this stage there were 25 applicants waiting for a place at the school. The criteria stated in the booklet '*A Guide for parents and carers on applying for a primary school place for the school year 2017-2018*' was again applied to determine which applicant should be offered the place.

The **1** place was offered to:

1. Those children who are defined as 'Children in Care'; or children who were previously in care, but immediately after being in care became subject to an adoption, child arrangements, or special guardianship order. (**0** place).
2. Those children with siblings already at Breentry Primary School who will still be on roll in September 2017. (**0** places)
3. A child living closest to Breentry Primary School as measured in a direct line from the home address to the school (**1** place)

The furthest distance offered a place in this category was **485 meters**.



Allocation Statement for Bridge Farm Primary School - September 2017

As Bridge Farm Primary School was oversubscribed, the criteria stated in 'A guide for parents and carers on applying for a primary school place for the school year 2017 – 2018' have been applied to allocate the places that are available at the school.

209 on-time applications (*114 x 1st preferences, 65 x 2nd preferences, 30 x 3rd preferences*) have been received for Bridge Farm Primary School, which has an Admission Number of 90.

How the Initial Allocation of Places was made

The **90** places have been offered to the following children:

1. Children in the care of the Local Authority or who were previously in Care but immediately after being in Care became subject to an adoption order, child arrangement order or special guardianship order. (**0** places)
2. Those children with siblings already at Bridge Farm Primary School and who will still be there in September 2017. (**47** places)
3. Those children living closest to Bridge Farm Primary School as measured in a direct line from the home address to the school. (**43** places) The furthest distance offered a place in this category was **1.080 km**.

CLASS SIZE PREJUDICE APPEALS - Effects of Infant Class Size Legislation.

Appeals for Bridge Farm Primary School will be heard on the basis of Class Size Prejudice as the school will have three Reception classes each containing 30 pupils.

Guidance on Class Size Prejudice Appeals is available on the School Admissions website.

2nd Round Allocation

As at the 19th May 2017, no places had become available for reallocation. At this date there were 19 applicants still pursuing a place.

Allocation Statement for Bridge Learning Campus Primary - September 2017

As at the 19th May 2017, Bridge Learning Campus Primary became oversubscribed 7 places had become available for reallocation. At this date there were 16 applicants still pursuing a place.

The Academy's published admissions criteria were applied and the 7 available places were offered to:

1. Those children who are defined as 'Children in Care'; or children who were previously in care, but immediately after being in care became subject to an adoption order, child arrangements order, or special guardianship order. (1 place)
2. Those children with siblings already at Bridge Learning Campus Primary and who will still be there in September 2017. (3 places)
3. Those children living closest to Bridge Learning Campus Primary as measured in a direct line from the home address to the school. (3 places)
4. The furthest distance offered a place in this category was **0.456 km**.

CLASS SIZE PREJUDICE APPEALS - Effects of Infant Class Size Legislation.

Appeals for Bridge Learning Campus Primary will be heard on the basis of Class Size Prejudice as the Academy will have two Reception classes each containing 30 pupils.

Guidance on Class Size Prejudice Appeals is available on the School Admissions website.

You should be aware that since the introduction of Infant Class Size Legislation in 2000, no appeals have been upheld in the parents' favour for this school.



Allocation Statement for Broomhill Infant School & Children's Centre – September 2017

As Broomhill Infant School was oversubscribed, the criteria stated in the booklet '*A Guide for parents and carers on applying for a primary school place for the school year 2017-2018*' have been applied to allocate the places that are available at the school.

118 on-time applications (*49 x 1st preferences, 21 x 2nd preferences, 48 x 3^d preferences*) have been received for Broomhill Infant School, which has an Admission Number of 60.

How the Initial Allocation of Places was made

The **60** places have been offered to the following children:

1. Those children who are defined as 'Children in Care'; or children who were previously in care, but immediately after being in care became subject to an adoption order, child arrangement order, or special guardianship order. (**1** place).
2. Those children with siblings already at Broomhill Infant/Junior School who will still be on roll in September 2017. (**18** places)
3. Those children living closest to Broomhill Infant School as measured in a direct line from the home address to the school (**41** places)

The furthest distance offered a place in this category was **1.372 km**.

CLASS SIZE PREJUDICE APPEALS - Effects of Infant Class Size Legislation.

Appeals for Broomhill Infant School will be heard on the basis of Class Size Prejudice. The school has two Reception classes each containing 30 children.

Guidance on Class Size Prejudice Appeals is available on the School Admissions website.

You should be aware that since the introduction of Infant Class Size Legislation in 2000, no appeals have been upheld in the parents' favour for this school.

2nd Round Allocation

As at the 19th May 2017, no places had become available for reallocation. At this date there were 11 applicants still pursuing a place.



Allocation Statement for Fair Furlong Primary School - September 2017

As Fair Furlong Primary School was oversubscribed, the criteria stated in 'A guide for parents and carers on applying for a primary school place for the school year 2017 – 2018' have been applied to allocate the places that are available at the school.

146 on-time applications (*74 x 1st preferences, 44 x 2nd preferences, 28 x 3rd preferences*) have been received for Fair Furlong Primary School, which has an Admission Number of 60.

How the Initial Allocation of Places was made

The **60** places have been offered to the following children:

1. Children in the care of the Local Authority or who were previously in Care but immediately after being in Care became subject to an adoption order, child arrangement order or special guardianship order. (**1** place)
2. Those children with siblings already at Fair Furlong Primary School and who will still be there in September 2017. (**23** places)
3. Those children living closest to Fair Furlong Primary School as measured in a direct line from the home address to the school. (**36** places)
The furthest distance offered a place in this category was **0.801 km**.

CLASS SIZE PREJUDICE APPEALS - Effects of Infant Class Size Legislation.

Appeals for Fair Furlong Primary School will be heard on the basis of Class Size Prejudice as the school will have two Reception classes each containing 30 pupils.

Guidance on Class Size Prejudice Appeals is available on the School Admissions website.

You should be aware that since the introduction of Infant Class Size Legislation in 2000, no appeals have been upheld in the parents' favour for this school.

2nd Round Allocation

As at the 19th May 2017, **2** places had become available for reallocation. At this date there were 16 applicants still pursuing a place.

The school's published admissions criteria were applied and the 2 available places were offered to:

1. Those children who are defined as 'Children in Care'; or children who were previously in care, but immediately after being in care became subject to an adoption order, child arrangements order, or special guardianship order. (**0** places)
2. Those children with siblings already at Fair Furlong Primary School and who will still be there in September 2017. (**0** places)
3. Those children living closest to Fair Furlong Primary School as measured in a direct line from the home address to the school. (**2** places)

The furthest distance offered a place in this category was **0.599 Km**.



Allocation Statement for Fishponds Church of England Academy – September 2017

As Fishponds Church of England Academy was oversubscribed, the criteria stated in the booklet 'A Guide for parents and carers on applying for a primary school place for the school year 2017-2018' have been applied to allocate the places that are available at the academy.

170 on-time applications (*78 x 1st preferences, 53 x 2nd preferences, 39 x 3^d preferences*) have been received for Fishponds Church of England Academy, which has an Admission Number of **60**.

How the Initial Allocation of Places was made

The **60** places have been offered to the following children:

1. Those children who are defined as 'Children in Care'; or children who were previously in care, but immediately after being in care became subject to an adoption, child arrangements, or special guardianship order. (**1** place).
2. Those children with siblings already at Fishponds Church of England Academy who will still be on roll in September 2017. (**32** places)
3. Children of regular worshippers at the following places: The parish churches of St Mary and All Saints, Fishponds. Other Anglican churches. Another Christian church which is in membership of, or has observer status at Churches Together in Britain and Ireland. Places of worship of other faith communities or the principal religions represented in England other than Christianity. (**4** places)
4. Those children living closest to Fishponds Church of England Academy as measured in a direct line from the home address to the school (**23** places)

The furthest distance offered a place in this category was **0.865 km**.

CLASS SIZE PREJUDICE APPEALS - Effects of Infant Class Size Legislation.

Appeals for Fishponds Church of England Academy will be heard on the basis of Class Size Prejudice. The academy has two Reception classes each containing 30 children.

Guidance on Class Size Prejudice Appeals is available on the School Admissions website.

You should be aware that since the introduction of Infant Class Size Legislation in 2000, no appeals have been upheld in the parents' favour for the academy.

2nd Round Allocation

As at the 19th May 2017, **3** places had become available for reallocation. At this point there were 23 applicants still pursuing a place.

The school's published admissions criteria were applied and the 3 available places were offered to:

1. Those children who are defined as 'Children in Care'; or children who were previously in care, but immediately after being in care became subject to an adoption, child arrangements, or special guardianship order. (**0** places)
2. Those children with siblings already at Fishponds Church of England Academy who will still be on roll in September 2017. (**1** place)
3. Children of regular worshippers at the following places: The parish churches of St Mary and All Saints, Fishponds. Other Anglican churches. Another Christian church which is in membership of, or has observer status at Churches Together in Britain and Ireland. Places of worship of other faith communities or the principal religions represented in England other than Christianity. (**1** place)
4. Those children living closest to Fishponds Church of England Academy as measured in a direct line from the home address to the school (**1** place)

The furthest distance offered a place in this category was **0.580 km**.

Allocation Statement for Four Acres Academy - September 2017

2nd Round Allocation

As at the 19th May 2017, Four Acres Academy became oversubscribed 6 places had become available for reallocation. At this date there were 7 applicants still pursuing a place.

The Academy's published admissions criteria were applied and the 6 available places were offered to:

1. Those children who are defined as 'Children in Care'; or children who were previously in care, but immediately after being in care became subject to an adoption order, child arrangements order, or special guardianship order. (**0** places)
2. Those children with siblings already at Four Acres Academy and who will still be there in September 2017. (**1** place)
3. Those children living closest to Four Acres Academy as measured in a direct line from the home address to the Academy. (**5** places)

The furthest distance offered a place in this category was **0.739 Km**.

Allocation Statement for Headley Park Primary - September 2017

2nd Round Allocation

As at the 19th May 2017, Headley Park Primary became oversubscribed 1 place had become available for reallocation. At this date there were 8 applicants still pursuing a place.

The school's published admissions criteria were applied and the 1 available place was offered to:

1. Those children who are defined as 'Children in Care'; or children who were previously in care, but immediately after being in care became subject to an adoption order, child arrangements order, or special guardianship order. **(0 places)**
2. Those children with siblings already at Headley Park Primary and who will still be there in September 2017. **(1 place)**

CLASS SIZE PREJUDICE APPEALS - Effects of Infant Class Size Legislation.

Appeals for Headley Park Primary School will be heard on the basis of Class Size Prejudice as the school will have two Reception classes each containing 30 pupils.

Guidance on Class Size Prejudice Appeals is available on the School Admissions website.

You should be aware that since the introduction of Infant Class Size Legislation in 2000, no appeals have been upheld in the parents' favour for this school.



Allocation Statement for Hillcrest Primary School - September 2017

As Hillcrest Primary School was oversubscribed, the criteria stated in 'A guide for parents and carers on applying for a primary school place for the school year 2017 – 2018' have been applied to allocate the places that are available at the school.

184 on-time applications (*95 x 1st preferences, 54 x 2nd preferences, 35 x 3^d preferences*) have been received for Hillcrest Primary School, which has an Admission Number of 60.

How the Initial Allocation of Places was made

The **60** places have been offered to the following children:

1. Children in the care of the Local Authority or who were previously in Care but immediately after being in Care became subject to an adoption order, child arrangement order or special guardianship order. (**3** places)
2. Those children with siblings already at Hillcrest Primary School and who will still be there in September 2017. (**36** places)
3. Those children living closest to Hillcrest Primary School as measured in a direct line from the home address to the school. (**22** places) An over allocation of 1 was made to enable twins to be offered places as per the School Admissions Code. The furthest distance offered a place in this category was **0.299 km**.

CLASS SIZE PREJUDICE APPEALS - Effects of Infant Class Size Legislation.

Appeals for Hillcrest Primary School will be heard on the basis of Class Size Prejudice as the school will have two Reception classes each containing 30 pupils.

Guidance on Class Size Prejudice Appeals is available on the School Admissions website

2nd Round Allocation

As at the 19th May 2017, no places had become available for reallocation. At this date there were 25 applicants still pursuing a place.



Allocation Statement for Holymead Primary School - September 2017

As Holymead Primary School was oversubscribed, the criteria stated in the booklet '*A Guide for parents and carers on applying for a primary school place for the school year 2017-2018*' have been applied to allocate the places that are available at the school.

253 on-time applications (*97 x 1st preferences, 122 x 2nd preferences, 34 x 3^d preferences*) have been received for Holymead Primary School, which has an Admission Number of 90.

How the Initial Allocation of Places was made

The **90** places have been offered to the following children:

1. Those children who are defined as 'Children in Care'; or children who were previously in care, but immediately after being in care became subject to an adoption order, child arrangement order, or special guardianship order. (**2** places).
2. Those children with siblings already at Holymead Primary School who will still be on roll in September 2017. (**44** places)
3. Those children living closest to Holymead Primary School as measured in a direct line from the home address to the school (**44** places) Holymead Primary School is on a split site, the home to school distance is measured from a point equidistant between the two sites.

The furthest distance offered a place in this category was **0.722 km**.

CLASS SIZE PREJUDICE APPEALS - Effects of Infant Class Size Legislation.

Appeals for Holymead Primary School will be heard on the basis of Class Size Prejudice. The school has three Reception classes each containing 30 children.

Guidance on Class Size Prejudice Appeals is available on the School Admissions website.

You should be aware that since the introduction of Infant Class Size Legislation in 2000, no appeals have been upheld in the parents' favour for this school.

2nd Round Allocation

As at the 19th May 2017, **2** places had become available for reallocation. At this date there were 26 applicants still pursuing a place.

The school's published admissions criteria were applied and the 2 available places were offered to:

1. Those children who are defined as 'Children in Care'; or children who were previously in care, but immediately after being in care became subject to an adoption order, child arrangements order, or special guardianship order. (**0** places)
2. Those children with siblings already at Holymead Primary School and who will still be there in September 2017. (**2** places)



Allocation Statement for Horfield CE Primary School - September 2017

As Horfield CE Primary School was oversubscribed, the criteria stated in the booklet 'A Guide for parents and carers on applying for a primary school place for the school year 2017-2018' have been applied to allocate the places that are available at the school.

140 on-time applications (*59 x 1st preferences, 36 x 2nd preferences, 45 x 3^d preferences*) have been received for Horfield CE Primary School, which has an Admission Number of **60**.

How the Initial Allocation of Places was made

The **60** places have been offered to the following children:

1. Those children who are defined as 'Children in Care'; or children who were previously in care, but immediately after being in care became subject to an adoption, child arrangements, or special guardianship order. (**2** places).
2. Those children with siblings already at Horfield CE Primary School who will still be on roll in September 2017. (**26** places)
3. Those children living closest to Horfield CE Primary School as measured in a direct line from the home address to the school (**32** places)

The furthest distance offered a place in this category was **854 meters**.

CLASS SIZE PREJUDICE APPEALS - Effects of Infant Class Size Legislation.

Appeals for Horfield CE Primary School will be heard on the basis of Class Size Prejudice. The school has 2 Reception classes each containing 30 children.

Guidance on Class Size Prejudice Appeals is available on the School Admissions website.

You should be aware that since the introduction of Infant Class Size Legislation in 2000, no appeals have been upheld in the parents' favour for this school.

For details of subsequent rounds of allocation please see below.

Second Round Allocation

As at the 19th May 2017 4 places had become available at Horfield CE Primary School. There were however, 13 applicants waiting for a place. The published admissions criteria was applied again and 4 available places were offered as follows;

How the Initial Allocation of Places was made

The **4** places have been offered to the following children:

1. Those children who are defined as 'Children in Care'; or children who were previously in care, but immediately after being in care became subject to an adoption, child arrangements, or special guardianship order. (**0** places).
2. Those children with siblings already at Horfield CE Primary School who will still be on roll in September 2017. (**0** places)
3. Those children living closest to Horfield CE Primary School as measured in a direct line from the home address to the school (**4** places)

The furthest distance offered a place in this category was **987 meters**.

Allocation Statement for Ilminster Avenue E-Act Academy - September 2017

As Ilminster Avenue E-Act Academy was oversubscribed, the criteria stated in 'A guide for parents and carers on applying for a primary school place for the school year 2017 – 2018' have been applied to allocate the places that are available at the Academy.

91 on-time applications (*44 x 1st preferences, 25 x 2nd preferences, 22 x 3rd preferences*) have been received for Ilminster Avenue E-Act Academy, which has an Admission Number of 50.

How the Initial Allocation of Places was made

The 50 places have been offered to the following children:

1. Children in the care of the Local Authority or who were previously in Care but immediately after being in Care became subject to an adoption order, child arrangement order or special guardianship order. (**1** place)
2. Those children with siblings already at Ilminster Avenue E-Act Academy and who will still be there in September 2017. (**29** places)
3. Those children living closest to Ilminster Avenue E-Act Academy as measured in a direct line from the home address to the school. (**20** places)
The furthest distance offered a place in this category was **2.490 km**.

2nd Round Allocation

As at the 19th May 2017, there were 17 applicants still pursuing a place. The Academy agreed to breach the admission number to 60. There were 10 places to allocate. The Academy's published admissions criteria were applied and the 10 available places were offered to:

1. Those children who are defined as 'Children in Care'; or children who were previously in care, but immediately after being in care became subject to an adoption order, child arrangements order, or special guardianship order. (**0** places)
2. Those children with siblings already at Ilminster Avenue E-Act Academy and who will still be there in September 2017. (**7** places)
3. Those children living closest to Ilminster Avenue E-Act Academy as measured in a direct line from the home address to the Academy. (**3** places)

The furthest distance offered a place in this category was **0.238 Km**.



Allocation Statement for Knowle Park Primary School - September 2017

As Knowle Park Primary School was oversubscribed, the criteria stated in 'A guide for parents and carers on applying for a primary school place for the school year 2017 – 2018' have been applied to allocate the places that are available at the school.

214 on-time applications (*88 x 1st preferences, 77 x 2nd preferences, 49 x 3rd preferences*) have been received for Knowle Park Primary School, which has an Admission Number of 90.

How the Initial Allocation of Places was made

The **90** places have been offered to the following children:

1. Children in the care of the Local Authority or who were previously in Care but immediately after being in Care became subject to an adoption order, child arrangement order or special guardianship order. (**1** place)
2. Those children with siblings already at Knowle Park Primary School and who will still be there in September 2017. (**40** places)
3. Those children living closest to Knowle Park Primary School as measured in a direct line from the home address to the school. (**49** places)
The furthest distance offered a place in this category was **0.797 km**.

CLASS SIZE PREJUDICE APPEALS - Effects of Infant Class Size Legislation.

Appeals for Knowle Park Primary School will be heard on the basis of Class Size Prejudice as the school will have three Reception classes each containing 30 pupils.

Guidance on Class Size Prejudice Appeals is available on the School Admissions website.

You should be aware that since the introduction of Infant Class Size Legislation in 2000, no appeals have been upheld in the parents' favour for this school.

2nd Round Allocation

As at the 19th May 2017, **1** place had become available for reallocation. At this date there were 26 applicants still pursuing a place.

The school's published admissions criteria were applied and the 1 available place was offered to:

1. Those children who are defined as 'Children in Care'; or children who were

previously in care, but immediately after being in care became subject to an adoption order, child arrangements order, or special guardianship order. (0 places)

2. Those children with siblings already at Knowle Park Primary School and who will still be there in September 2017. (1 place)

The furthest distance offered a place in this category was 0.531 km

Little Mead Primary Academy

Gosforth Road
Bristol
BS10 6DS

0117 377 3279
little.mead.p@bristol-schools.uk
www.littlemead.bristol.sch.uk



Allocation Statement for Little Mead Primary Academy - September 2017

As Little Mead Primary Academy was oversubscribed, the criteria stated in the booklet 'A Guide for parents and carers on applying for a primary school place for the school year 2017-2018' have been applied to allocate the places that are available at the school.

134 on-time applications (*65 x 1st preferences, 43 x 2nd preferences, 26 x 3^d preferences*) have been received for Little Mead Primary Academy, which has an Admission Number of **60**.

How the Initial Allocation of Places was made

The **60** places have been offered to the following children:

1. Those children who are defined as 'Children in Care'; or children who were previously in care, but immediately after being in care became subject to an adoption, child arrangements, or special guardianship order. (**0** places).
2. Those children with siblings already at Little Mead Primary Academy who will still be on roll in September 2017. (**22** places)
3. Those children living closest to Little Mead Primary Academy as measured in a direct line from the home address to the school (**38** places)

The furthest distance offered a place in this category was **908 metres**.

CLASS SIZE PREJUDICE APPEALS - Effects of Infant Class Size Legislation.

Appeals for Little Mead Primary Academy will be heard on the basis of Class Size Prejudice. The school has two Reception classes each containing 30 children.

Guidance on Class Size Prejudice Appeals is available on the School Admissions website.

You should be aware that since the introduction of Infant Class Size Legislation in 2000, no appeals have been upheld in the parents' favour for this school.

Please see below for details of subsequent rounds of allocation



Endeavour Academy Trust: a company limited by guarantee. Registered in England & Wales.
Registered office: Gosforth Road, Bristol, BS10 6DS. Company number: 08245853.

National Support School
designated by



National College for
Teaching & Leadership

2nd Round Allocation – 19th May 2017

As at the 19th May 2017 2 places had become available for reallocation at Little Mead Primary Academy. At this stage 29 applicants were waiting for a place. The criteria stated in the booklet '*A Guide for parents and carers on applying for a primary school place for the school year 2017-2018*' was again applied to allocate the places that are available at the school.

The **2** places have been offered to the following children:

1. Those children who are defined as 'Children in Care'; or children who were previously in care, but immediately after being in care became subject to an adoption, child arrangements, or special guardianship order. (**1** place).
2. A child with an older sibling already at Little Mead Primary Academy who will still be on roll in September 2017. This child lived 101m from the school (**1** places)

Allocation Statement for Oasis Academy Marksbury Road - September 2017

As at the 19th May 2017, Oasis Academy Marksbury Road became oversubscribed 5 places had become available for reallocation. At this date there were 7 applicants still pursuing a place.

The Academy's published admissions criteria were applied and the 5 available places were offered to:

1. Those children who are defined as 'Children in Care'; or children who were previously in care, but immediately after being in care became subject to an adoption order, child arrangements order, or special guardianship order. (**0** places)
2. Those children with siblings already at Oasis Academy Marksbury Road and who will still be there in September 2017. (**0** places)
3. Those children living closest to Oasis Academy Marksbury Road as measured in a direct line from the home address to the school. (**5** places)
4. The furthest distance offered a place in this category was **0.832 km**.

CLASS SIZE PREJUDICE APPEALS - Effects of Infant Class Size Legislation.

Appeals for Oasis Academy Marksbury Road will be heard on the basis of Class Size Prejudice as the school will have two Reception classes each containing 30 pupils.

Guidance on Class Size Prejudice Appeals is available on the School Admissions website.

You should be aware that since the introduction of Infant Class Size Legislation in 2000, no appeals have been upheld in the parents' favour for this school.

Allocation Statement for Oasis Academy New Oak - September 2017

As Oasis Academy New Oak was oversubscribed, the criteria stated in 'A guide for parents and carers on applying for a primary school place for the school year 2017 – 2018' have been applied to allocate the places that are available at the Academy.

92 on-time applications (*36 x 1st preferences, 32 x 2nd preferences, 24 x 3rd preferences*) have been received for Oasis Academy New Oak, which has an Admission Number of 30.

How the Initial Allocation of Places was made

The 30 places have been offered to the following children:

1. Children in the care of the Local Authority or who were previously in Care but immediately after being in Care became subject to an adoption order, child arrangement order or special guardianship order. (**3** places)
2. Those children with siblings already at Oasis Academy New Oak and who will still be there in September 2017. (**12** places)
3. Those children living closest to Oasis Academy New Oak as measured in a direct line from the home address to the school. (**15** places)
The furthest distance offered a place in this category was **0.442.83 km**.

CLASS SIZE PREJUDICE APPEALS - Effects of Infant Class Size Legislation.

Appeals for Oasis Academy New Oak will be heard on the basis of Class Size Prejudice as the Academy will have one Reception class containing 30 pupils.

Guidance on Class Size Prejudice Appeals is available on the School Admissions website.

You should be aware that since the introduction of Infant Class Size Legislation in 2000, no appeals have been upheld in the parents' favour for this Academy.

2nd Round Allocation

As at the 19th May 2017, **1** place had become available for reallocation. At this date there were 16 applicants still pursuing a place.

The Academy's published admissions criteria were applied and the 1 available place was offered to:

1. Those children who are defined as 'Children in Care'; or children who were previously in care, but immediately after being in care became subject to an adoption order, child arrangements order, or special guardianship order. (0 places)
2. Those children with siblings already at Oasis Academy New Oak and who will still be there in September 2017. (1 place)

Allocation Statement for Redfield Educate Together Primary Academy – Admission to Reception year group September 2017/18

Redfield Educate Together Primary Academy is run independently from the Local Authority (LA) and is funded directly by the Department for Education (DfE) for a set number of places in each year group. This is called the Published Admission Number or PAN. The PAN for Reception 2017/18 entry is 60. Exceeding more than 60 places would place enormous constraints on the existing school site. Quality of education and health and safety issues are the main concern for pupils and staff.

Redfield Educate Together Primary Academy is part of the Coordinated Admissions Scheme within Bristol City Council (BCC).

Redfield Educate Together Primary Academy received 156 on-time applications. So with only 60 places available we could not offer a place to every applicant who applied. The oversubscription criteria used to offer places is set out in academies admission policy available on the Academy website.

The **60** places have been offered to the following children:

1. Highest priority was given to those children who are defined as 'Children in Care'; or children who were previously in care, but immediately after being in care became subject to an adoption, child arrangements, or special guardianship order. (**2** places).
2. Those children with siblings already at Redfield Educate Together Primary Academy who will still be on roll in September 2017. (**18** places)
3. Those children living closest to Redfield Educate Together Primary Academy as measured in a direct line from the home address to the school (**40** places)

The furthest distance offered a place in this category was **0.698 Km**.

2nd Round Allocation

As at the 19th May 2017, **3** places had become available for reallocation. At this point there were 17 applicants still pursuing a place.

The school's published admissions criteria were applied and the 3 available places were offered to:

1. Highest priority was given to those children who are defined as 'Children in Care'; or children who were previously in care, but immediately after being in care became subject to an adoption, child arrangements, or special guardianship order. (**1** place)
2. Those children with siblings already at Redfield Educate Together Primary Academy who will still be on roll in September 2017. (**0** places)
3. Those children living closest to Redfield Educate Together Primary Academy as measured in a direct line from the home address to the school. (**2** places)

The furthest distance offered a place in this category was **0.173 Km**.

The operation of waiting list for unsuccessful applicants:

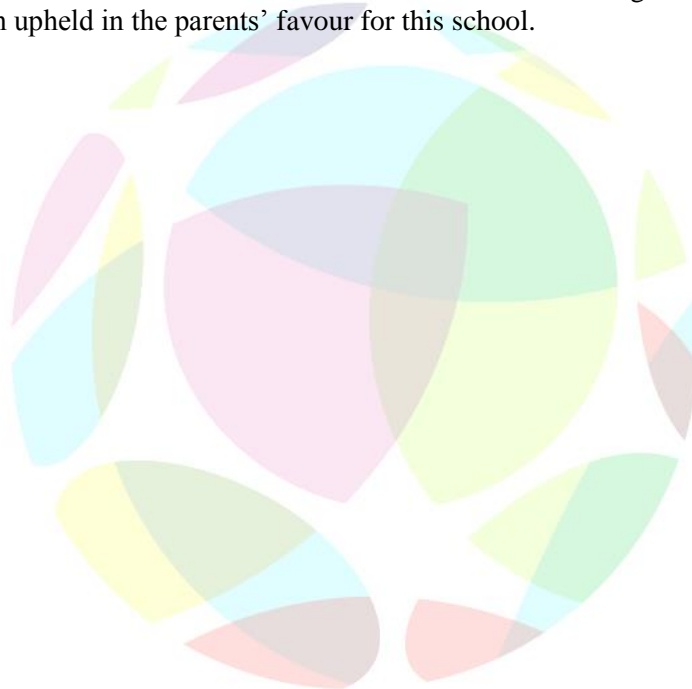
Redfield Educate Together Primary Academy is its own admission authority and maintains its own waiting list. Applications can request a place on this waiting list by contacting the Academy directly. Email info@redfieldet.org.uk or call 01173790777

CLASS SIZE PREJUDICE APPEALS - Effects of Infant Class Size Legislation.

Appeals for Redfield Educate Together Primary Academy will be heard on the basis of Class Size Prejudice. The school has two Reception classes each containing 30 children.

Guidance on Class Size Prejudice Appeals is available on the School Admissions website.

You should be aware that since the introduction of Infant Class Size Legislation in 2000, no appeals have been upheld in the parents' favour for this school.



SCHOOL OF CHRIST THE KING



Hartcliffe Road, Filwood Park, Knowle
Bristol, BS4 1HD
Telephone: 01179664844
E-Mail: Christ.the.king.p@bristol-schools.uk
Website: www.ctk.education

Allocation Statement for School of Christ the King Catholic Primary September 2017

As School of Christ the King Catholic Primary School was oversubscribed, the published admissions criteria have been applied to allocate places that are available at the school. 58 applications have been received for School of Christ the King Primary School which has an admission number of 30.

How the Initial Allocation of places was made.

Criteria list

- 6.1 Baptised Catholic Looked After and previously Looked After children
- 6.2 Baptised Catholic children who live in the parish of Christ the King Church **(5)**
- 6.3 Baptised Catholic children who live outside the parish of Christ the King Church
- 6.4 Looked After and previously Looked After children
- 6.5 Children of a baptised Catholic parent/carer who live within the parish of Christ the King Church
- 6.6 Children who will have a brother or sister at the school at the time of their admission **(23)**
- 6.7 Children of a baptised Catholic parent/carer who live outside the parish of Christ the King Church
- 6.8 Other children not in the above categories **(2)**
The furthest distance offered a place in this category was **0.160 km.**

CLASS SIZE PREJUDICE APPEALS - Effects of Infant Class Size Legislation.

Appeals for School of Christ the King Catholic Primary School will be heard on the basis of Class Size Prejudice as the school will have one Reception class containing 30 pupils.

Guidance on Class Size Prejudice Appeals is available on the School Admissions website.

You should be aware that since the introduction of Infant Class Size Legislation in 2000, no appeals have been upheld in the parents' favour for this school.

2nd Round Allocation

As at the 19th May 2017, no places had become available for reallocation. At this date there were 6 applicants still pursuing a place.



Allocation Statement for Southville Primary School - September 2017

As Southville Primary School was oversubscribed, the criteria stated in the booklet '*A Guide for parents and carers on applying for a primary school place for the school year 2017-2018*' have been applied to allocate the places that are available at the school.

244 on-time applications (*97 x 1st preferences, 102 x 2nd preferences, 45 x 3^d preferences*) have been received for Southville Primary School, which has an Admission Number of 90.

How the Initial Allocation of Places was made

The **90** places have been offered to the following children:

1. Those children who are defined as 'Children in Care'; or children who were previously in care, but immediately after being in care became subject to an adoption order, child arrangement order, or special guardianship order. (**0** places)
2. Those children with siblings already at Southville Primary School who will still be on roll in September 2017. (**28** places)
3. Those children living closest to Southville Primary School as measured in a direct line from the home address to the school (**62** places) Southville Primary School is on a split site, the home to school distance is measured from a point equidistant between the two sites.

The furthest distance offered a place in this category was **0.762 km**.

CLASS SIZE PREJUDICE APPEALS - Effects of Infant Class Size Legislation.

Appeals for Southville Primary School will be heard on the basis of Class Size Prejudice. The school has three Reception classes each containing 30 children.

Guidance on Class Size Prejudice Appeals is available on the School Admissions website.

You should be aware that since the introduction of Infant Class Size Legislation in 2000, no appeals have been upheld in the parents' favour for this school.

2nd Round Allocation

As at the 19th May 2017, **3** places had become available for reallocation. At this date there were 12 applicants still pursuing a place.

The school's published admissions criteria were applied and the 3 available places were offered to:

1. Those children who are defined as 'Children in Care'; or children who were previously in care, but immediately after being in care became subject to an adoption order, child arrangements order, or special guardianship order. (**0** places)
2. Those children with siblings already at Southville Primary School and who will still be there in September 2017. (**1** place)
3. Those children living closest to Southville Primary School as measured in a direct line from the home address to the school. (**2** places)

The furthest distance offered a place in this category was **0.434 Km**.



Allocation Statement for St Anne's Infants' School - September 2017

As St Anne's Infants' School was oversubscribed, the criteria stated in the booklet '*A Guide for parents and carers on applying for a primary school place for the school year 2017-2018*' have been applied to allocate the places that are available at the school.

201 on-time applications (*99 x 1st preferences, 57 x 2nd preferences, 45 x 3^d preferences*) have been received for St Anne's Infants' School, which has an Admission Number of 90.

How the Initial Allocation of Places was made

The **90** places have been offered to the following children:

1. Those children who are defined as 'Children in Care'; or children who were previously in care, but immediately after being in care became subject to an adoption order, child arrangement order, or special guardianship order. (**2** places).
2. Those children with siblings already at St Anne's Infants' School/Wicklea Academy who will still be on roll in September 2017. (**32** places)
3. Those children living closest to St Anne's Infants' School as measured in a direct line from the home address to the school (**56** places)

The furthest distance offered a place in this category was **0.887 km**.

CLASS SIZE PREJUDICE APPEALS - Effects of Infant Class Size Legislation.

Appeals for St Anne's Infants' School will be heard on the basis of Class Size Prejudice. The school has three Reception classes each containing 30 children.

Guidance on Class Size Prejudice Appeals is available on the School Admissions website.

You should be aware that since the introduction of Infant Class Size Legislation in 2000, no appeals have been upheld in the parents' favour for this school.

2nd Round Allocation

As at the 19th May 2017, no places had become available for reallocation. At this date there were 26 applicants still pursuing a place.



Allocation Statement for St Barnabas Church of England Primary School - September 2017

As St Barnabas C of E Primary School was oversubscribed, the criteria stated in the booklet 'A Guide for parents and carers on applying for a primary school place for the school year 2017-2018' have been applied to allocate the places that are available at the school.

69 on-time applications (*31 x 1st preferences, 26 x 2nd preferences, 12 x 3rd preferences*) have been received for St Barnabas C of E Primary School, which has an Admission Number of **30**.

How the Initial Allocation of Places was made:

The **30** places have been offered to the following children:

1. Those children who are defined as 'Children in Care'; or children who were previously in care, but immediately after being in care became subject to an adoption, child arrangements, or special guardianship order. (**0** places).
2. Those children with siblings already at St Barnabas C of E Primary School who will still be on roll in September 2017. (**16** places)
3. Those children living closest to St Barnabas C of E Primary School as measured in a direct line from the home address to the school. (**14** places)

The furthest distance offered a place in this category was **0.541 km**.

CLASS SIZE PREJUDICE APPEALS - Effects of Infant Class Size Legislation.

Appeals for St Barnabas C of E Primary School will be heard on the basis of Class Size Prejudice. The school has one Reception class containing 30 children.

Guidance on Class Size Prejudice Appeals is available on the School Admissions website.

You should be aware that since the introduction of Infant Class Size Legislation in 2000, no appeals have been upheld in the parents' favour for this school.

2nd Round Allocation

As at the 19th May 2017, **1** place had become available for reallocation. At this point there were 6 applicants still pursuing a place.

The school's published admissions criteria were applied and the 1 available place was offered to:

1. Those children who are defined as 'Children in Care'; or children who were previously in care, but immediately after being in care became subject to an adoption, child arrangements, or special guardianship order. (**0** places).
2. Those children with siblings already at St Barnabas C of E Primary School who will still be on roll in September 2017. (**1** place)

The furthest distance offered a place in this category was **0.038 Km**.

Allocated by LA

St Bernadette Catholic Primary School

Headteacher: Mrs B P Lee

Tel: 01173772373

Fax: 01173772379

E-Mail stbernadettep@bristol-schools.uk

<http://www.st-bernadette-pri.bristol.sch.uk>



Gladstone Road
Hengrove
Bristol
BS14 9LP

'Living and Learning through Christ'

Allocation Statement for St Bernadette Catholic Primary School – September 2017

The Governing Body met on 22 February 2017 at 9:30.

As St Bernadette Catholic Primary School was oversubscribed, the published admissions criteria in the 2017/18 admissions policy have been applied to allocate the places that are available at the school.

The list received from LA showed 85 applications, 5 applications were withdrawn. The governors considered 80 and allocated 30 since St Bernadette Primary School has an admission number of 30.

How the initial allocation of places was made:

- 6.1 Baptised Catholic Looked After Children at the time of application and baptised Catholic children who were previously Looked After, but ceased to be so because they were adopted (or became subject to a child arrangements order or a special guardianship order) immediately following having been Looked After. (0)
- 6.2 Baptised Catholic children who will have a brother or sister (as defined below) attending St Bernadette School at the time of admission and who reside within the parishes of St. Bernadette, Whitchurch, St. Gerard Majella, Knowle or Sacred Heart, Chew Magna. (8)
- 6.3 Baptised Catholic children living within the parishes of St. Bernadette, Whitchurch, St. Gerard Majella, Knowle or Sacred Heart, Chew Magna. (8)
- 6.4 Baptised Catholic children who will have a brother or sister (as defined below) attending St Bernadette School at the time of admission and who live outside the parishes of St. Bernadette, Whitchurch, St. Gerard Majella, Knowle or Sacred Heart, Chew Magna. (0)
- 6.5 Baptised Catholic children who live outside the parishes of St. Bernadette, Whitchurch, St. Gerard Majella, Knowle or Sacred Heart, Chew Magna. (2)
- 6.6 Looked After Children at the time of application and children who were previously Looked After, but ceased to be so because they were adopted (or became subject to a child arrangements order or a special guardianship order) immediately following having been Looked After. (0)
- 6.7 Children who will have a brother or sister (as defined below) attending St Bernadette School at the time of their admission. (5)



Please recycle me

Allocated by LA

6.8 Other children not in the above categories. (7)

In Categories 6.1, 6.2, 6.3 6.4 6.5, a copy of a valid baptismal certificate must be sent to the school, who may also request sight of the original. Where a certificate is not available, a statement from a member of the clergy, confirming that the child has (or in their opinion has) been baptised or received into the Catholic Church must be provided.

Category 6.8 was oversubscribed. The drawing of lots was used to allocate places for this criterion, overseen by an independent observer, as stated in our Admissions Policy 2017/18.

Infant Class Size Appeals

Statutory limits on class sizes mean that infant classes with a single qualified teacher cannot contain more than 30 pupils without taking 'qualifying measures' to comply with the statutory duty to limit infant classes with a single teacher to a maximum of 30. Qualifying measures include those such as

- employing an additional teacher
- building an extra classroom
- reorganisation of classes

The infant classes at St Bernadette Catholic Primary School are organised with a maximum of 30 in each year group, so appeals for the infant classes will be heard on the basis of 'class size prejudice'.

The Independent Appeals Panel is restricted to three circumstances in which they can uphold your case. These are if the panel is satisfied:

- (a) that your child would have been offered a place if the admission arrangements had been properly implemented.
- (b) the child would have been offered a place if the arrangements had not been contrary to mandatory provisions in the School Admissions Code and the School Standards and Framework Act 1998
- (c) that the decision was not one which a *reasonable admission authority would make in the circumstances of the case.

'Reasonable' is defined as

"In order for a panel to determine that an admission authority's decision to refuse admission was unreasonable, it will need to be satisfied that the decision to refuse to admit that particular child was 'perverse in the light of the admission arrangements', i.e. it was 'beyond the range of responses open to a reasonable decision maker' or 'a decision which is so outrageous in its defiance of logic or of accepted moral standards that no sensible person who had applied his mind to the question could have arrived at it'.

2nd Round Allocation

As at the 19th May 2017, no places had become available for reallocation. At this date there were 13 applicants still pursuing a place.

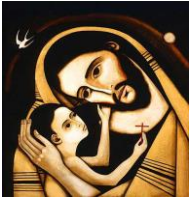


Please recycle me

Allocated by LA



Please recycle me



St Joseph's Catholic Primary School

Chatsworth Road, Fishponds, Bristol, BS16 3QR

Tel. 0117 3772160

e-mail: st.josephs.p@bristol-schools.uk

Website: www.st-josephs-pri.bristol.sch.uk

Head Teacher- Mrs J McCarthy



Allocation Statement regarding St Joseph's Catholic Primary School September 2017

The school serves the parish of St Joseph's The Parish of St Joseph's is defined by the parish boundaries. A map of the parish is available on the school's website.

Why has my child not been offered a place at St Joseph's Catholic Primary School?

The admission number for the reception year of 2017 at St Joseph's is 30 pupils.

When more children apply than there are places available, the over subscriptions criteria admissions procedure is applied. St Joseph's school received 94 applications for 30 places.

Admissions Criteria & Waiting list information

As St Joseph's School was oversubscribed, the oversubscription criteria have been applied to allocate the places that are available to the school. From the 94 applications received 30 places were allocated as shown in the table below.

A waiting list of unsuccessful applicants will be held until 31st December 2017 and then discarded. The waiting list will be prioritised in accordance with the School's Admission Policy of 2017-2018.

Category	Category Description	Number of Children
1	Looked After children and Previously Looked After children, who are baptised in the Catholic Faith	0
2*	Children who are baptised into the Catholic Faith and reside in the parish of St Joseph	8
3*	Baptised Catholic children who live outside the parish of St Joseph	3
4	Looked After and Previously Looked After children	0
5**	Children who are not baptised at the time of application, living within the parish of St Joseph, but born with a Catholic parent/carer	3
6	Children who will have a sibling on the roll at St Joseph's school at the time of admission	6
7	Other children not in the categories above	10
Total		30

*A copy of a valid Baptismal Certificate must be provided to the School for all baptised children

** A copy of a valid Baptismal Certificate of the Catholic parent/carer must be provided to the School



Together in God's family we love, grow and learn



2nd Round

As at the 15th June 2017, 1 place became available for reallocation. At this point there were 12 applicants still pursuing a place. This place has been allocated to a child in category 2.

Appeals Procedure for St Joseph's Primary School

Appeals for a place at St Joseph's Primary School will be held in accordance with the information given in the Admission Policy for 2017-18:

Parents have the right to appeal against the refusal of the Governing Body to admit their child. You will receive an appeal form with your allocated school place letter from your Admission Authority.

Your completed form should include:

- Your contact details
- the name, address and date of birth of your child
- the name of the preferred school
- the reasons for your preference
- the grounds for your appeal.

The letter of appeal has to be sent to the Clerk to the Governors at St Joseph's School within 20 school days of receiving the letter of refusal. Appeals will be arranged by the Clifton Diocesan Department for Schools and Colleges and conducted in accordance with the Code of Practice on School Appeals. The result of the appeal is binding on all parties.

Key Points – If you decide to appeal

- Please consider carefully the strength of your case before deciding to proceed with an appeal.
- Decide on the reasons why St Joseph's Catholic Primary School is the **only** school to meet your child's needs.
- Prepare your case.
- Back up your reasons with strong evidence – stating your child's friend attends or that this is your local school is not considered as evidence.

An appeals panel can only uphold an appeal in these circumstances if
(a) The admissions arrangements were applied wrongly in your case OR

(b) It was unreasonable to turn your child down given circumstances.

The Law defines 'unreasonable' as being completely illogical, or not based on the facts of the case.



Allocation Statement for St Mary Redcliffe C of E VC Primary School - September 2017

As St Mary Redcliffe C of E VC Primary School was oversubscribed, the criteria stated in 'A guide for parents and carers on applying for a primary school place for the school year 2017 – 2018' have been applied to allocate the places that are available at the school.

161 on-time applications (*63 x 1st preferences, 60 x 2nd preferences, 38 x 3rd preferences*) have been received for St Mary Redcliffe C of E VC Primary School, which has an Admission Number of 60.

How the Initial Allocation of Places was made

The **60** places have been offered to the following children:

1. Children in the care of the Local Authority or who were previously in Care but immediately after being in Care became subject to an adoption order, child arrangement order or special guardianship order. (**0** places)
2. Those children with siblings already at St Mary Redcliffe C of E VC Primary School and who will still be there in September 2017. (**32** places)
3. Those children living closest to St Mary Redcliffe C of E VC Primary School as measured in a direct line from the home address to the school. (**28** places)
The furthest distance offered a place in this category was **0.594 km**.

CLASS SIZE PREJUDICE APPEALS - Effects of Infant Class Size Legislation.

Appeals for St Mary Redcliffe C of E VC Primary School will be heard on the basis of Class Size Prejudice as the school will have two Reception classes each containing 30 pupils.

Guidance on Class Size Prejudice Appeals is available on the School Admissions website.

2nd Round Allocation

As at the 19th May 2017, 1 place had become available for reallocation. At this date there were 16 applicants still pursuing a place.

The school's published admissions criteria were applied and the 1 available place was offered to:

1. Those children who are defined as 'Children in Care'; or children who were previously in care, but immediately after being in care became subject to an adoption order, child arrangements order, or special guardianship order. (**0** places)

2. Those children with siblings already at St Mary Redcliffe C of E VC Primary School and who will still be there in September 2017. (1 place)

The furthest distance offered a place in this category was **0.444 Km**.



Allocation Statement for St Peter's Church of England VC Primary School - September 2017

As St Peter's Church of England VC Primary School was oversubscribed, the criteria stated in 'A guide for parents and carers on applying for a primary school place for the school year 2017 – 2018' have been applied to allocate the places that are available at the school.

131 on-time (*86 x 1st preferences, 32 x 2nd preferences, 13 x 3rd preferences*) applications have been received for St Peter's Church of England VC Primary School, which has an Admission Number of 60.

How the Initial Allocation of Places was made

The **60** places have been offered to the following children:

1. Children in the care of the Local Authority or who were previously in Care but immediately after being in Care became subject to an adoption order, child arrangement order or special guardianship order. (**1** place)
2. Those children with siblings already at St Peter's Church of England VC Primary School and who will still be there in September 2017. (**33** places)
3. Those children living closest to St Peter's Church of England VC Primary School as measured in a direct line from the home address to the school. (**26** places)
The furthest distance offered a place in this category was **0.462 km**.

CLASS SIZE PREJUDICE APPEALS - Effects of Infant Class Size Legislation.

Appeals for St Peter's Church of England VC Primary School will be heard on the basis of Class Size Prejudice as the school will have two Reception classes each containing 30 pupils.

Guidance on Class Size Prejudice Appeals is available on the School Admissions website

You should be aware that since the introduction of Infant Class Size Legislation in 2000, no appeals have been upheld in the parents' favour for this school.

2nd Round Allocation

As at the 19th May 2017, **2** places had become available for reallocation. At this date there were 19 applicants still pursuing a place.

The school's published admissions criteria were applied and the 2 available places were offered to:

1. Those children who are defined as 'Children in Care'; or children who were previously in care, but immediately after being in care became subject to an adoption order, child arrangements order, or special guardianship order. (**0** places)
2. Those children with siblings already at St Peter's Church of England VC Primary School and who will still be there in September 2017. (**0** places)
3. Those children living closest to St Peter's Church of England VC Primary School as measured in a direct line from the home address to the school. (**2** places)

The furthest distance offered a place in this category was **0.483 Km**.



Allocation Statement for St. Werburgh's Primary School - September 2017

As St Werburgh's Primary School was oversubscribed, the criteria stated in the booklet 'A Guide for parents and carers on applying for a primary school place for the school year 2017-2018' have been applied to allocate the places that are available at the school.

163 on-time applications (*73 x 1st preferences, 43 x 2nd preferences, 47 x 3^d preferences*) have been received for St. Werburgh's Primary School, which has an Admission Number of **56**.

How the Initial Allocation of Places was made

The **56** places have been offered to the following children:

1. Those children who are defined as 'Children in Care'; or children who were previously in care, but immediately after being in care became subject to an adoption, child arrangements, or special guardianship order. (**0** place).
2. Those children with siblings already at St. Werburgh's Primary School and who will still be there in September 2017. (**25** places)
3. Those children living closest to St. Werburgh's Primary School as measured in a direct line from the home address to the school. (**31** places)

The furthest distance offered a place in this category was **0.613 km**.

2nd Round Allocation

As at the 19th May 2017, **2** places had become available for reallocation. At this point there were 10 applicants still pursuing a place.

The school's published admissions criteria were applied and the 2 available places were offered to:

1. Those children who are defined as 'Children in Care'; or children who were previously in care, but immediately after being in care became subject to an adoption, child arrangements, or special guardianship order. (**0** place).
2. Those children with siblings already at St. Werburgh's Primary School and who will still be there in September 2017. (**1** place)
3. Those children living closest to St. Werburgh's Primary School as measured in a direct line from the home address to the school. (**1** place)

The furthest distance offered a place in this category was **0.079 Km**.



Allocation Statement for St John's CE Primary School - September 2017

As St John's CE Primary School was oversubscribed, the criteria stated in the booklet 'A Guide for parents and carers on applying for a primary school place for the school year 2017-2018' have been applied to allocate the places that are available at the school.

184 on-time applications (*74 x 1st preferences, 58 x 2nd preferences, 52 x 3rd preferences*) have been received for St John's CE Primary School, which has an Admission Number of **75**.

How the Initial Allocation of Places was made

The **75** places have been offered to the following children:

1. Those children who are defined as 'Children in Care'; or children who were previously in care, but immediately after being in care became subject to an adoption, child arrangements, or special guardianship order. (**1** places).
2. Those children with siblings already at St John's CE Primary School who will still be on roll in September 2017. (**30** places)
3. Those children living closest to St John's CE Primary School as measured in a direct line from the home address to the school (**44** places)

The furthest distance offered a place in this category was **1.23km**.

CLASS SIZE PREJUDICE APPEALS - Effects of Infant Class Size Legislation.

Appeals for St John's CE Primary School will be heard on the basis of Infant Class Size Prejudice. The school has 3 Reception classes each containing 25 children. When these year groups move through to Year 1 and 2 they will become mixed year groups with 30 children in each class.

Guidance on Class Size Prejudice Appeals is available on the School Admissions website.

You should be aware that since the introduction of Infant Class Size Legislation in 2000, no appeals have been upheld in the parents' favour for this school.

Please see below for details of subsequent rounds of allocation

Second Round Allocation

As at 19th May 2017 1 place became available at St John's CE Primary School and there were 15 applicants still pursuing places. As the school was oversubscribed, the criteria stated in the booklet '*A Guide for parents and carers on applying for a primary school place for the school year 2017-2018*' have been applied to allocate the places that are available at the school.

The 1 place has been offered to the following child:

1. Those children who are defined as 'Children in Care'; or children who were previously in care, but immediately after being in care became subject to an adoption, child arrangements, or special guardianship order. (**0** places).
2. A children with a sibling already at St John's CE Primary School who will still be on roll in September 2017. (**1** places)

Allocation Statement for SUMMERHILL INFANT SCHOOL – September 2017 –
2nd Round

As at the 19th May 2017, Summerhill Infant School became oversubscribed. **3** places had become available for reallocation at the school. At this stage 5 applicants were still pursuing a place at the school.

The school's published admissions criteria were applied and the places were offered as follows;

2. Those children with siblings already at Summerhill Infant School and who will still be there in September 2017. (**1** place)
3. Children who live closest to Summerhill Infant School as measured in a direct line from the home address to the school. (**2** places)

The furthest distance offered a place in this category was **0.966 km**.

Allocation Statement for The Kingfisher School - September 2017

As at the 19th May 2017, The Kingfisher School became oversubscribed. No places were available to reallocate.



Allocation Statement for Victoria Park Primary School - September 2017

As Victoria Park Primary School was oversubscribed, the criteria stated in 'A guide for parents and carers on applying for a primary school place for the school year 2017 – 2018' have been applied to allocate the places that are available at the school.

217 on-time applications (*86 x 1st preferences, 60 x 2nd preferences, 71 x 3rd preferences*) have been received for Victoria Park Primary School, which has an Admission Number of 60.

How the Initial Allocation of Places was made

The **60** places have been offered to the following children:

1. Children in the care of the Local Authority or who were previously in Care but immediately after being in Care became subject to an adoption order, child arrangement order or special guardianship order. (**1** place)
2. Those children with siblings already at Victoria Park Primary School and who will still be there in September 2017. (**27** places)
3. Those children living closest to Victoria Park Primary School as measured in a direct line from the home address to the school. (**32** places)
The furthest distance offered a place in this category was **0.431 km**.

CLASS SIZE PREJUDICE APPEALS - Effects of Infant Class Size Legislation.

Appeals for Victoria Park Primary School will be heard on the basis of Class Size Prejudice as the school will have two Reception classes each containing 30 pupils.

Guidance on Class Size Prejudice Appeals is available on the School Admissions website.

You should be aware that since the introduction of Infant Class Size Legislation in 2000, no appeals have been upheld in the parents' favour for this school.

2nd Round Allocation

As at the 19th May 2017, **4** places had become available for reallocation. At this date there were 22 applicants still pursuing a place.

The school's published admissions criteria were applied and the 4 available places were offered to:

1. Those children who are defined as 'Children in Care'; or children who were previously in care, but immediately after being in care became subject to an

adoption order, child arrangements order, or special guardianship order. (**0** places)

2. Those children with siblings already at Victoria Park Primary School and who will still be there in September 2017. (**1** place)
3. Those children living closest to Victoria Park Primary School as measured in a direct line from the home address to the school. (**3** places)

The furthest distance offered a place in this category was **0.451 Km**.



Allocation Statement for Wansdyke Primary School - September 2017

As Wansdyke Primary School was oversubscribed, the criteria stated in 'A guide for parents and carers on applying for a primary school place for the school year 2017 – 2018' have been applied to allocate the places that are available at the school.

107 on-time applications (*35 x 1st preferences, 48 x 2nd preferences, 24 x 3^d preferences*) have been received for Wansdyke Primary School, which has an Admission Number of 30.

How the Initial Allocation of Places was made

The **30** places have been offered to the following children:

1. Children in the care of the Local Authority or who were previously in Care but immediately after being in Care became subject to an adoption order, child arrangement order or special guardianship order (**0** places)
2. Those children with siblings already at Wansdyke Primary School and who will still be there in September 2017. (**20** places)
3. Those children living closest to Wansdyke Primary School as measured in a direct line from the home address to the school. (**10** places)

The furthest distance offered a place in this category was **0.877 km**.

CLASS SIZE PREJUDICE APPEALS - Effects of Infant Class Size Legislation.

Appeals for Wansdyke Primary School will be heard on the basis of Class Size Prejudice as the school will have one Reception class containing 30 pupils.

Guidance on Class Size Prejudice Appeals is available on the School Admissions website

2nd Round Allocation

As at the 19th May 2017, no places had become available for reallocation. At this date there were 10 applicants still pursuing a place.

Allocation Statement for Waycroft Academy - September 2017

As Waycroft Academy was oversubscribed, the criteria stated in 'A guide for parents and carers on applying for a primary school place for the school year 2017 – 2018' have been applied to allocate the places that are available at the Academy.

98 on-time applications (*68 x 1st preferences, 20 x 2nd preferences, 10 x 3rd preferences*) have been received for Waycroft Academy, which has an Admission Number of 60.

How the Initial Allocation of Places was made

The **60** places have been offered to the following children:

1. Children in the care of the Local Authority or who were previously in Care but immediately after being in Care became subject to an adoption order, child arrangement order or special guardianship order. (**1** place)
2. Those children with siblings already at Waycroft Academy and who will still be there in September 2017. (**26** places)
3. Those children living closest to Waycroft Academy as measured in a direct line from the home address to the Academy. (**33** places)

The furthest distance offered a place in this category was **0.658 km**.

CLASS SIZE PREJUDICE APPEALS - Effects of Infant Class Size Legislation.

Appeals for Waycroft Academy will be heard on the basis of Class Size Prejudice as the Academy will have two Reception classes each containing 30 pupils.

Guidance on Class Size Prejudice Appeals is available on the School Admissions website.

2nd Round Allocation

As at the 19th May 2017, **1** place had become available for reallocation. At this date there were 6 applicants still pursuing a place.

The Academy's published admissions criteria were applied and the 1 available place was offered to:

1. Those children who are defined as 'Children in Care'; or children who were previously in care, but immediately after being in care became subject to an

adoption order, child arrangements order, or special guardianship order. (**0** places)

2. Those children with siblings already at Waycroft Academy and who will still be there in September 2017. (**0** places)
3. Those children living closest to Waycroft Academy as measured in a direct line from the home address to the Academy. (**1** place)

The furthest distance offered a place in this category was **0.551 Km**.



Allocation Statement for West Town Lane Academy - September 2017

As West Town Lane Academy was oversubscribed, the criteria stated in the booklet 'A Guide for parents and carers on applying for a primary school place for the school year 2017-2018' have been applied to allocate the places that are available at the Academy.

243 on-time applications (*105 x 1st preferences, 69 x 2nd preferences, 69 x 3^d preferences*) have been received for West Town Lane Academy, which has an Admission Number of 90.

How the Initial Allocation of Places was made

The **90** places have been offered to the following children:

1. Those children who are defined as 'Children in Care'; or children who were previously in care, but immediately after being in care became subject to an adoption order, child arrangement order, or special guardianship order. (**0** places).
2. Those children with siblings already at West Town Lane Academy who will still be on roll in September 2017. (**45** places)
3. Those children living closest to West Town Lane Academy as measured in a direct line from the home address to the Academy (**45** places)

The furthest distance offered a place in this category was **0.836 km**.

CLASS SIZE PREJUDICE APPEALS - Effects of Infant Class Size Legislation.

Appeals for West Town Lane Academy will be heard on the basis of Class Size Prejudice. The Academy has three Reception classes each containing 30 children.

Guidance on Class Size Prejudice Appeals is available on the School Admissions website.

You should be aware that since the introduction of Infant Class Size Legislation in 2000, no appeals have been upheld in the parents' favour for the Academy.

2nd Round Allocation

As at the 19th May 2017, **4** places had become available for reallocation. At this date there were 35 applicants still pursuing a place.

The Academy's published admissions criteria were applied and the 4 available places were offered to:

1. Those children who are defined as 'Children in Care'; or children who were previously in care, but immediately after being in care became subject to an adoption order, child arrangements order, or special guardianship order. (**0** places)
2. Those children with siblings already at West Town Lane Academy and who will still be there in September 2017. (**0** places)
3. Those children living closest to West Town Lane Academy as measured in a direct line from the home address to the Academy (**4** places)

The furthest distance offered a place in this category was **0.604 Km**.



Westbury-on-Trym

Church of England Academy

Channells Hill, Bristol BS9 3HZ

Telephone: (0117) 377 2605

Email: info@westburyontrym.academy

www.westburyontrym.academy

Headteacher: Mrs Cathy Milton

Allocation Statement for Westbury-on-Trym C of E Academy – September 2017

As Westbury-on-Trym Church of England Academy was over-subscribed, the criteria stated in the Bristol City Council 'Apply for a Primary School place for the school year 2017/18' booklet have been applied to allocate the places that are available at the school.

185 on-time applications have been received for Westbury-on-Trym C of E Academy, which has an admission number of **60**.

How the initial allocation of places was made by the local Authority on behalf of Westbury-on-Trym Church of England Academy:

The **60** places have been offered to the following children:

1. Children in the care of the Local Authority, or who were previously in Care but immediately after being in Care became subject to an adoption, residence or special guardianship order. (**0** places).
2. Those children with siblings already at Westbury-on-Trym C of E Academy and who will still be there in September 2017 (**26** places)
3. Those children living closest to Westbury-on-Trym C of E Academy as measured in a direct line from the home address to the school. (**34** places). The furthest distance offered a place in this category was 742 metres.

CLASS SIZE PREJUDICE APPEALS – Effects of Infant Class Size Legislation.

Appeals for Westbury-on-Trym C of E Academy will be heard on the basis of Class Size Prejudice as the school will be running two Reception class each containing 30 pupils.

You should be aware that since the introduction on Infant Class Size Legislation in 2000, no appeals have been upheld in the parents' favour for this school

See below for details of subsequent rounds of allocation



Westbury-on-Trym

Church of England Academy

Channells Hill, Bristol BS9 3HZ

Telephone: (0117) 377 2605

Email: info@westburyontrym.academy

www.westburyontrym.academy

Headteacher: Mrs Cathy Milton

As at 19th May 2017 4 places had become available for reallocation at Westbury-on-Trym Church of England Academy. At this stage there were 21 applicants still pursuing a place. As the Academy was over-subscribed, the criteria stated in the Bristol City Council 'Apply for a Primary School place for the school year 2017/18' booklet have been applied to allocate the 4 places that are available at the school.

The **4** places have been offered to the following children:

4. Children in the care of the Local Authority, or who were previously in Care but immediately after being in Care became subject to an adoption, residence or special guardianship order. (**0** places).
5. Those children with siblings already at Westbury-on-Trym C of E Academy and who will still be there in September 2017 (**0** places)
6. The 4 children living closest to Westbury-on-Trym C of E Academy as measured in a direct line from the home address to the school. (**4** places). The furthest distance offered a place in this category was 763 metres.



Allocation Statement for Whitehall Primary School - September 2017

As Whitehall Primary School was oversubscribed, the criteria stated in the booklet '*A Guide for parents and carers on applying for a primary school place for the school year 2017-2018*' have been applied to allocate the places that are available at the school.

296 on-time applications (*165 x 1st preferences, 83 x 2nd preferences, 48 x 3^d preferences*) have been received for Whitehall Primary School, which has an Admission Number of **90**.

How the Initial Allocation of Places was made

The **90** places have been offered to the following children:

1. Those children who are defined as 'Children in Care'; or children who were previously in care, but immediately after being in care became subject to an adoption, child arrangements, or special guardianship order. (**3** places).
2. Those children with siblings already at Whitehall Primary School who will still be on roll in September 2017. (**43** places)
3. Those children living closest to Whitehall Primary School as measured in a direct line from the home address to the school (**44** places)

The furthest distance offered a place in this category was **0.470 km**.

CLASS SIZE PREJUDICE APPEALS - Effects of Infant Class Size Legislation.

Appeals for Whitehall Primary School will be heard on the basis of Class Size Prejudice. The school has three Reception classes each containing 30 children.

Guidance on Class Size Prejudice Appeals is available on the School Admissions website.

You should be aware that since the introduction of Infant Class Size Legislation in 2000, no appeals have been upheld in the parents' favour for this school.

2nd Round Allocation

As at the 19th May 2017, 1 place had become available for reallocation. At this point there were 48 applicants still pursuing a place.

The school's published admissions criteria were applied and the 1 available place was offered to:

- Those children living closest to Whitehall Primary School as measured in a direct line from the home address to the school.

The furthest distance offered a place in this category was **0.182 Km**.