



### **Allocation Statement for Air Balloon Hill Primary School - September 2017**

As Air Balloon Hill Primary School was oversubscribed, the criteria stated in the booklet '*A Guide for parents and carers on applying for a primary school place for the school year 2017-2018*' have been applied to allocate the places that are available at the school.

**216** on-time applications (*106 x 1<sup>st</sup> preferences, 62 x 2<sup>nd</sup> preferences, 48 x 3<sup>rd</sup> preferences*) have been received for Air Balloon Hill Primary School, which has an Admission Number of **120**.

#### **How the Initial Allocation of Places was made**

The **120** places have been offered to the following children:

1. Those children who are defined as 'Children in Care'; or children who were previously in care, but immediately after being in care became subject to an adoption, child arrangements, or special guardianship order. (**1** place).
2. Those children with siblings already at Air Balloon Hill Primary School who will still be on roll in September 2017. (**44** places)
3. Those children living closest to Air Balloon Hill Primary School as measured in a direct line from the home address to the school (**75** places)

The furthest distance offered a place in this category was **1.535 km**.

#### **CLASS SIZE PREJUDICE APPEALS - Effects of Infant Class Size Legislation.**

Appeals for Air Balloon Hill Primary School will be heard on the basis of Class Size Prejudice. The school has four Reception classes each containing 30 children.

Guidance on Class Size Prejudice Appeals is available on the School Admissions website.

**You should be aware that since the introduction of Infant Class Size Legislation in 2000, no appeals have been upheld in the parents' favour for this school.**



### **Allocation Statement for Ashley Down Primary School - September 2017**

As Ashley Down Primary School was oversubscribed, the criteria stated in the booklet '*A Guide for parents and carers on applying for a primary school place for the school year 2017-2018*' have been applied to allocate the places that are available at the school.

**243** on-time applications (*85 x 1<sup>st</sup> preferences, 82 x 2<sup>nd</sup> preferences, 76 x 3<sup>rd</sup> preferences*) have been received for Ashley Down Primary School, which has an Admission Number of **60**.

#### **How the Initial Allocation of Places was made**

The **60** places have been offered to the following children:

1. Those children who are defined as 'Children in Care'; or children who were previously in care, but immediately after being in care became subject to an adoption, child arrangements, or special guardianship order. (**2** places).
2. Those children with siblings already at Ashley Down Primary School who will still be on roll in September 2017. (**34** places)
3. Those children living closest to Ashley Down Primary School as measured in a direct line from the home address to the school (**24** places)

The furthest distance offered a place in this category was **320 meters**.

#### **CLASS SIZE PREJUDICE APPEALS - Effects of Infant Class Size Legislation.**

Appeals for Ashley Down Primary School will be heard on the basis of Class Size Prejudice. The school has 2 Reception classes each containing 30 children.

Guidance on Class Size Prejudice Appeals is available on the School Admissions website.

**You should be aware that since the introduction of Infant Class Size Legislation in 2000, no appeals have been upheld in the parents' favour for this school.**



## **ADMISSION TO INFANT/PRIMARY SCHOOL**

### **INITIAL ALLOCATION STATEMENT FOR ON-TIME APPLICATIONS**

#### **BAILEY'S COURT PRIMARY SCHOOL - SEPTEMBER 2017**

As Bailey's Court Primary School was over-subscribed, it was necessary to use South Gloucestershire Council's admission criteria, as published in '*Admission to Primary Schools in South Gloucestershire September 2017 – August 2018*', to allocate the places available at the school.

143 applications were received by the 15 January 2017 for Bailey's Court Primary School which has an admission number of 60.

#### **How the initial allocation of places was made:**

3 places were required for children with an Education, Health and Care Plan (EHC Plan).

22 Local Siblings.

35 Children who live closest to the school: The furthest distance offered a place under this criterion was 0.972 mile.

A total of 2 refusals have been made. Please note that some applications may have been either withdrawn by the parents/carers, or discounted where a higher preference of school has been offered.

Distances from home to school are measured in a direct line between the address point of the child's home and a central point within the main school buildings using the Local Authority's computerised mapping system.

#### **Can I remain on a waiting list for my preferred school(s)?**

Yes. The waiting lists will be maintained until the end of Term 2 (December).

#### **CLASS SIZE PREJUDICE APPEALS – Effects of Infant Class Size Legislation:**

Appeals for Bailey's Court Primary School will be heard on the basis of Infant Class Size Prejudice as the school will organise with two Reception classes each containing 30 pupils with one full-time qualified teacher (or the equivalent of) in each class.

**Please see enclosed leaflet for more information.**



## **ADMISSION TO INFANT/PRIMARY SCHOOL**

### **INITIAL ALLOCATION STATEMENT FOR ON-TIME APPLICATIONS**

#### **BEACON RISE PRIMARY SCHOOL - SEPTEMBER 2017**

As Beacon Rise Primary School was over-subscribed, it was necessary to use South Gloucestershire Council's admission criteria, as published in '*Admission to Primary Schools in South Gloucestershire September 2017 – August 2018*', to allocate the places available at the school.

243 applications were received by the 15 January 2017 for Beacon Rise Primary School which has an admission number of 90.

#### **How the initial allocation of places was made:**

2 places were required for children with an Education, Health and Care Plan (EHC Plan).

1 Child in Public Care and Previously in Public Care

31 Local Siblings (within the Area of Prime Responsibility (APR)).

56 Children who live within the APR: The furthest distance offered a place under this criterion was 0.582 mile.

A total of 43 refusals have been made. Please note that some applications may have been either withdrawn by the parents/carers, or discounted where a higher preference of school has been offered.

Distances from home to school are measured in a direct line between the address point of the child's home and a central point within the main school buildings using the Local Authority's computerised mapping system.

#### **Can I remain on a waiting list for my preferred school(s)?**

Yes. The waiting lists will be maintained until the end of Term 2 (December).

#### **CLASS SIZE PREJUDICE APPEALS – Effects of Infant Class Size Legislation:**

Appeals for Beacon Rise Primary School will be heard on the basis of Infant Class Size Prejudice as the school will organise with three Reception classes each containing 30 pupils with one full-time qualified teacher (or the equivalent of) in each class.

**Please see enclosed leaflet for more information.**





### **Allocation Statement for Bishop Road Primary School - September 2017**

As Bishop Road Primary School was oversubscribed, the criteria stated in the booklet '*A Guide for parents and carers on applying for a primary school place for the school year 2017-2018*' have been applied to allocate the places that are available at the school.

**291** on-time applications (*110 x 1<sup>st</sup> preferences, 82 x 2<sup>nd</sup> preferences, 99 x 3<sup>rd</sup> preferences*) have been received for Bishop Road Primary School, which has an Admission Number of **120**.

#### **How the Initial Allocation of Places was made**

The **120** places have been offered to the following children:

1. Those children who are defined as 'Children in Care'; or children who were previously in care, but immediately after being in care became subject to an adoption, child arrangements, or special guardianship order. (**0** places).
2. Those children with siblings already at Bishop Road Primary School who will still be on roll in September 2017. (**53** places)
3. Those children living closest to Bishop Road Primary School as measured in a direct line from the home address to the school (**67** places)

The furthest distance offered a place in this category was **1.154km**.

#### **CLASS SIZE PREJUDICE APPEALS - Effects of Infant Class Size Legislation.**

Appeals for Bishop Road Primary School will be heard on the basis of Class Size Prejudice. The school has 4 Reception classes each containing 30 children.

Guidance on Class Size Prejudice Appeals is available on the School Admissions website.

**You should be aware that since the introduction of Infant Class Size Legislation in 2000, no appeals have been upheld in the parents' favour for this school.**



## **ADMISSION TO INFANT/PRIMARY SCHOOL**

### **INITIAL ALLOCATION STATEMENT FOR ON-TIME APPLICATIONS**

#### **BLACKHORSE PRIMARY SCHOOL - SEPTEMBER 2017**

As Blackhorse Primary School was over-subscribed, it was necessary to use South Gloucestershire Council's admission criteria, as published in '*Admission to Primary Schools in South Gloucestershire September 2017 – August 2018*', to allocate the places available at the school.

236 applications were received by the 15 January 2017 for Blackhorse Primary School which has an admission number of 60. The Admission Level includes placements at the Special Resource Base for Social Communication Difficulties.

#### **How the initial allocation of places was made:**

4 places were required for the Special Educational Needs Resource Base.

1 Child with an Education, Health and Care Plan (EHC Plan).

2 Children in Public Care and Previously in Public Care

22 Local Siblings (within the Area of Prime Responsibility (APR)).

31 Children living within the APR: The furthest distance offered a place under this criterion was 0.325 mile.

A total of 44 refusals have been made. Please note that some applications may have been either withdrawn by the parents/carers, or discounted where a higher preference of school has been offered.

Distances from home to school are measured in a direct line between the address point of the child's home and a central point within the main school buildings using the Local Authority's computerised mapping system.

#### **Can I remain on a waiting list for my preferred school(s)?**

Yes. The waiting lists will be maintained until the end of Term 2 (December).

#### **CLASS SIZE PREJUDICE APPEALS – Effects of Infant Class Size Legislation:**

Appeals for Blackhorse Primary School will be heard on the basis of Infant Class Size Prejudice as the school will organise with two Reception classes each containing 30 pupils with one full-time qualified teacher (or the equivalent of) in each class.

**Please see enclosed leaflet for more information.**



### **Allocation Statement for Blaise Primary School - September 2017**

As Blaise Primary School was oversubscribed, the criteria stated in the booklet '*A Guide for parents and carers on applying for a primary school place for the school year 2017-2018*' have been applied to allocate the places that are available at the school.

**128** on-time applications (*47 x 1<sup>st</sup> preferences, 54 x 2<sup>nd</sup> preferences, 27 x 3<sup>rd</sup> preferences*) have been received for Blaise Primary School, which has an Admission Number of **60**.

#### **How the Initial Allocation of Places was made**

The **60** places have been offered to the following children:

1. Those children who are defined as 'Children in Care'; or children who were previously in care, but immediately after being in care became subject to an adoption, child arrangements, or special guardianship order. (**0** places).
2. Those children with siblings already at Blaise Primary School who will still be on roll in September 2017. (**26** places)
3. Those children living closest to Blaise Primary School as measured in a direct line from the home address to the school (**34** places)

The furthest distance offered a place in this category was **883 meters**.

#### **CLASS SIZE PREJUDICE APPEALS - Effects of Infant Class Size Legislation.**

Appeals for Blaise Primary School will be heard on the basis of Class Size Prejudice. The school has 2 Reception classes each containing 30 children.

Guidance on Class Size Prejudice Appeals is available on the School Admissions website.

**You should be aware that since the introduction of Infant Class Size Legislation in 2000, no appeals have been upheld in the parents' favour for this school.**

**ADMISSION TO INFANT/PRIMARY SCHOOL  
INITIAL ALLOCATION STATEMENT FOR ON-TIME APPLICATIONS  
BRADLEY STOKE COMMUNITY SCHOOL (PRIMARY PHASE) - SEPTEMBER 2017**

As Bradley Stoke Community School (primary phase) was over-subscribed, it was necessary to use Bradley Stoke Community School's admission criteria, as published in '*Admission to Primary Schools in South Gloucestershire September 2017 – August 2018*', to allocate the places available at the school.

157 applications were received by 15 January 2017 for Bradley Stoke Community School (primary phase) which has an admission number of 30.

**How the initial allocation of places was made:**

1 Child with an Education, Health and Care Plan (EHC Plan).

1 Child in Public Care and Previously in Public Care.

16 Local Siblings (within the Area of Prime Responsibility (APR)).

12 Children who live within the APR: The furthest distance offered a place under this criterion was 0.404 mile.

A total of 28 refusals have been made. Please note that some applications may have been either withdrawn by the parents/carers, or discounted where a higher preference of school has been offered.

Distances from home to school are measured in a direct line between the address point of the child's home and a central point within the main school buildings using the Local Authority's computerised mapping system.

**Can I remain on a waiting list for my preferred school(s)?**

Yes. You can remain on the waiting list for as long as you like.

**Can I appeal the decision not to offer my child a place at the school?**

Yes, all parents/carers whose child has been refused admission to a school may exercise their right of appeal. However, if the school has a full Reception class containing 30 pupils any appeals will be heard on Infant Class Size Prejudice.

Infant Class Size legislation states that classes where the majority of children will reach the age of 5, 6 or 7 during the school year must not contain more than 30 pupils with a single teacher.

April 2017



## APPEAL FORM

This form should only be completed if you wish to make a formal appeal for a place at Olympus Academy Trust:

### BRADLEY STOKE COMMUNITY SCHOOL (PRIMARY PHASE)

Please complete in black ink and return this form within 20 school days to:

Lisa Stevens, Bradley Stoke Community School, Fiddlers Wood Lane, Bradley Stoke, BS32 9BS

**INFANT CLASS SIZE** – Government legislation means that infant classes (Reception, Year 1 and Year 2) with one teacher cannot contain more than 30 pupils. Given the extremely limited grounds on which an appeal may be upheld, Infant Class Size Appeals are rarely successful.

At Infant Class Size Appeals the independent appeal panel can only look at:

- Whether the admission arrangements were lawful.
- Whether the admission arrangements were incorrectly applied and your child should have been offered a place.
- Whether it was unreasonable to refuse your preference. The appeal panel would need to be satisfied that the decision was so completely absurd or outrageous that no reasonable person, with the same facts, would have made that decision.

Parents/carers can find it frustrating when they realise how very limited the powers of the Appeal Panel are. We are therefore drawing this to your attention now, so you can make an informed choice about whether you wish to appeal or not. The purpose of this information is to explain clearly the role of the Appeal Panel and not in any way discourage you from appealing, which is your legal right if you feel you have grounds to do so.

Name of parent/carer	
Contact telephone no	
Signature	
Date	
Full name of child	
Date of birth	
Address of child	
Current school & year group	

Please indicate preference: 1<sup>st</sup>, 2<sup>nd</sup> or 3<sup>rd</sup>:

**PLEASE REMEMBER TO UPDATE OAT OF ANY CHANGES TO YOUR CONTACT DETAILS.**

**Reasons for Preference/Grounds for Appeal**

**Please submit any supporting evidence with this appeal letter.**

This appeal is expected to be heard in the context of Infant Class Size.

Please indicate which circumstance you believe applies to your case.

A	The admission arrangements were not lawful
B	The admission arrangements were not correctly applied and if they had been my child would have been offered a place.
C	The decision not to offer my child a place was unreasonable (in a legal sense).

Please continue on a separate sheet, if necessary, and attach



### **Allocation Statement for Brentry Primary School - September 2017**

As Brentry Primary School was oversubscribed, the criteria stated in the booklet '*A Guide for parents and carers on applying for a primary school place for the school year 2017-2018*' have been applied to allocate the places that are available at the school.

**160** on-time applications (*70 x 1<sup>st</sup> preferences, 54 x 2<sup>nd</sup> preferences, 36 x 3<sup>rd</sup> preferences*) have been received for Brentry Primary School, which has an Admission Number of **30**.

#### **How the Initial Allocation of Places was made**

The **30** places have been offered to the following children:

1. Those children who are defined as 'Children in Care'; or children who were previously in care, but immediately after being in care became subject to an adoption, child arrangements, or special guardianship order. (**0** place).
2. Those children with siblings already at Brentry Primary School who will still be on roll in September 2017. (**15** places)
3. Those children living closest to Brentry Primary School as measured in a direct line from the home address to the school (**15** places)

The furthest distance offered a place in this category was **485 meters**.

There were 2 children living at an identical distance of 485 meters to the school. As a result a random allocation was made by a Solicitor independent of the School Admission Team drawing the successful applicant's name from a hat.

#### **CLASS SIZE PREJUDICE APPEALS - Effects of Infant Class Size Legislation.**

Appeals for Brentry Primary School will be heard on the basis of Class Size Prejudice. The school has 1 Reception class containing 30 children.

Guidance on Class Size Prejudice Appeals is available on the School Admissions website.

**You should be aware that since the introduction of Infant Class Size Legislation in 2000, no appeals have been upheld in the parents' favour for this school.**



### **Allocation Statement for Bridge Farm Primary School - September 2017**

As Bridge Farm Primary School was oversubscribed, the criteria stated in 'A guide for parents and carers on applying for a primary school place for the school year 2017 – 2018' have been applied to allocate the places that are available at the school.

**209** on-time applications (*114 x 1<sup>st</sup> preferences, 65 x 2<sup>nd</sup> preferences, 30 x 3<sup>rd</sup> preferences*) have been received for Bridge Farm Primary School, which has an Admission Number of 90.

#### **How the Initial Allocation of Places was made**

The **90** places have been offered to the following children:

1. Children in the care of the Local Authority or who were previously in Care but immediately after being in Care became subject to an adoption order, child arrangement order or special guardianship order. (**0** places)
2. Those children with siblings already at Bridge Farm Primary School and who will still be there in September 2017. (**47** places)
3. Those children living closest to Bridge Farm Primary School as measured in a direct line from the home address to the school. (**43** places) The furthest distance offered a place in this category was **1.080 km**.

#### **CLASS SIZE PREJUDICE APPEALS - Effects of Infant Class Size Legislation.**

Appeals for Bridge Farm Primary School will be heard on the basis of Class Size Prejudice as the school will have three Reception classes each containing 30 pupils.

Guidance on Class Size Prejudice Appeals is available on the School Admissions website.





## **ADMISSION TO INFANT/PRIMARY SCHOOL**

### **INITIAL ALLOCATION STATEMENT FOR ON-TIME APPLICATIONS**

#### **BROMLEY HEATH INFANT SCHOOL - SEPTEMBER 2017**

As Bromley Heath Infant School was over-subscribed, it was necessary to use South Gloucestershire Council's admission criteria, as published in '*Admission to Primary Schools in South Gloucestershire September 2017 – August 2018*', to allocate the places available at the school.

165 applications were received by the 15 January 2017 for Bromley Heath Infant School which has an admission number of 60.

#### **How the initial allocation of places was made:**

1 Child in Public Care and Previously in Public Care

34 Local Siblings (within the Area of Prime Responsibility (APR)).

25 Children living within the APR: The furthest distance offered a place under this criterion was 0.238 mile.

A total of 40 refusals have been made. Please note that some applications may have been either withdrawn by the parents/carers, or discounted where a higher preference of school has been offered.

Distances from home to school are measured in a direct line between the address point of the child's home and a central point within the main school buildings using the Local Authority's computerised mapping system.

#### **Can I remain on a waiting list for my preferred school(s)?**

Yes. The waiting lists will be maintained until the end of Term 2 (December).

#### **CLASS SIZE PREJUDICE APPEALS – Effects of Infant Class Size Legislation:**

Appeals for Bromley Heath Infant School will be heard on the basis of Infant Class Size Prejudice as the school will organise with two Reception classes each containing 30 pupils with one full-time qualified teacher (or the equivalent of) in each class.

**Please see enclosed leaflet for more information.**



### **Allocation Statement for Broomhill Infant School & Children's Centre – September 2017**

As Broomhill Infant School was oversubscribed, the criteria stated in the booklet '*A Guide for parents and carers on applying for a primary school place for the school year 2017-2018*' have been applied to allocate the places that are available at the school.

**118** on-time applications (*49 x 1<sup>st</sup> preferences, 21 x 2<sup>nd</sup> preferences, 48 x 3<sup>d</sup> preferences*) have been received for Broomhill Infant School, which has an Admission Number of 60.

#### **How the Initial Allocation of Places was made**

The **60** places have been offered to the following children:

1. Those children who are defined as 'Children in Care'; or children who were previously in care, but immediately after being in care became subject to an adoption order, child arrangement order, or special guardianship order. (**1** place).
2. Those children with siblings already at Broomhill Infant/Junior School who will still be on roll in September 2017. (**18** places)
3. Those children living closest to Broomhill Infant School as measured in a direct line from the home address to the school (**41** places)

The furthest distance offered a place in this category was **1.372 km**.

#### **CLASS SIZE PREJUDICE APPEALS - Effects of Infant Class Size Legislation.**

Appeals for Broomhill Infant School will be heard on the basis of Class Size Prejudice. The school has two Reception classes each containing 30 children.

Guidance on Class Size Prejudice Appeals is available on the School Admissions website.

**You should be aware that since the introduction of Infant Class Size Legislation in 2000, no appeals have been upheld in the parents' favour for this school.**



### **Allocation Statement for Brunel Field Primary School - September 2017**

As Brunel Field Primary School was oversubscribed, the criteria stated in the booklet '*A Guide for parents and carers on applying for a primary school place for the school year 2017-2018*' have been applied to allocate the places that are available at the school.

**182** on-time applications (*70 x 1<sup>st</sup> preferences, 74 x 2<sup>nd</sup> preferences, 38 x 3<sup>rd</sup> preferences*) have been received for Brunel Field Primary School, which has an Admission Number of **60**.

#### **How the Initial Allocation of Places was made**

The **60** places have been offered to the following children:

1. Those children who are defined as 'Children in Care'; or children who were previously in care, but immediately after being in care became subject to an adoption, child arrangements, or special guardianship order. (**0** places).
2. Those children with siblings already at Brunel Field Primary School who will still be on roll in September 2017. (**37** places)
3. Those children living closest to Brunel Field Primary School as measured in a direct line from the home address to the school (**23** places)

The furthest distance offered a place in this category was **347 meters**.

There were 2 children living at an identical distance of 347 meters to the school. As a result a random allocation was made by a Solicitor independent of the School Admission Team drawing the successful applicant's name from a hat.

#### **CLASS SIZE PREJUDICE APPEALS - Effects of Infant Class Size Legislation.**

Appeals for Brunel Field Primary School will be heard on the basis of Class Size Prejudice. The school has 2 Reception classes each containing 30 children.

Guidance on Class Size Prejudice Appeals is available on the School Admissions website.

**You should be aware that since the introduction of Infant Class Size Legislation in 2000, no appeals have been upheld in the parents' favour for this school.**



### **Allocation Statement for Cabot Primary School - September 2017**

Cabot Primary School has an Admission Number of 30. The School was initially undersubscribed and all 27 'on-time' applicants were able to be offered places.

However, later in the allocation process 5 late applications were received. As there were only 3 places remaining at the school it was necessary to use the criteria stated in the booklet '*A Guide for parents and carers on applying for a primary school place for the school year 2017-2018*' to establish who should be offered the 3 remaining places.

The **3** places have been offered to the following children:

1. Those children who are defined as 'Children in Care'; or children who were previously in care, but immediately after being in care became subject to an adoption, child arrangements, or special guardianship order. (**0** places).
2. Those children with siblings already at Cabot Primary School who will still be on roll in September 2017. (**3** places)

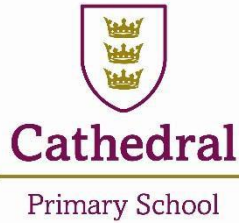
The furthest distance offered a place in this category was **0.939 km**.

### **CLASS SIZE PREJUDICE APPEALS - Effects of Infant Class Size Legislation.**

Appeals for Cabot Primary School will be heard on the basis of Class Size Prejudice. The school has one Reception class containing 30 children.

Guidance on Class Size Prejudice Appeals is available on the School Admissions website.

**You should be aware that since the introduction of Infant Class Size Legislation in 2000, no appeals have been upheld in the parents' favour for this school.**



## **ALLOCATION STATEMENT FOR ENTRY TO RECEPTION 2017/18**

### **Cathedral Primary School (CPS):**

Cathedral Primary School (CPS) is a Free School run independently from the local authority (LA) and is funded directly by the Department for Education (DfE) for a set number of places in each year group (this is called the published admission number or PAN).

The PAN for Reception 2017/18 entry is 30 but we will be offering **60** places for children joining school in September.

### **The reason why your child has not been successful in gaining a place at the school:**

CPS has received **252** on-time applications for the **60** places available and is therefore unable to offer places to every applicant who applied.

### **How the 60 places have been allocated for Reception September 2017:**

The places have been allocated by applying the oversubscription criteria, **in order**, as set out in the published admission arrangements 2017/18 for the 1<sup>st</sup> round of allocation:

- 'Looked after' children or 'previously looked after' children (1 place).
- Siblings (12 places).
- Medical & social (none).
- Son/daughter of CPS members of staff (none).
- Randomly allocated (47 places)



### APPEAL FORM - RECEPTION 2017/18

I wish to appeal against the decision to refuse my child a place at Cathedral Primary School

Name of Child: \_\_\_\_\_

Date of Birth: \_\_\_\_\_

Address of Child: \_\_\_\_\_

Name of Parent/Carer: \_\_\_\_\_

Daytime telephone number: \_\_\_\_\_

Email address: \_\_\_\_\_

**Please set out the reasons for your appeal, based on the published oversubscription criteria, in writing below:**  
*(Continue on a separate sheet/s if required)*

Signature of Parent/Carer: \_\_\_\_\_

Dated: \_\_\_\_/\_\_\_\_/\_\_\_\_

**Please complete and return this form by Monday 15<sup>th</sup> May 2017 to:**  
**Admissions, Cathedral Primary School, College Square, Bristol, BS1 5TS**



## **APPEALS PROCEDURE FOR ADMISSION TO RECEPTION 2017/18**

### **BEFORE COMPLETING AN APPEAL FORM PLEASE READ ALL PAGES IN THIS BOOKLET**

*'Under the Education Act a parent/carer has the right to appeal against the decision to refuse their child a place at a school for which they have applied for.'*

As a parent/carer you are able to express a preference to your home local authority regarding the school you would like your child to attend. If, however, the year group applied for is oversubscribed and has reached its published admission number (PAN) the admission authority may not be able to meet your preference. As a result, compliance with your preference would "prejudice the provision of efficient education or the efficient use of resources" at the school.

Cathedral Primary School (CPS), as its own admission authority received **252** on time applications for the reception class in September which has a PAN of 30. However, CPS has been able to offer 60 places for children joining school in September.

All 60 places available have been offered in line with the oversubscription criteria, in order, as set out in the CPS admission arrangements 2017/18. A copy of these arrangements are available on the CPS website <http://www.cathedralprimaryschool.org/> to remind you of the procedure that has been followed.

### **Infant Class Size**

By law, all classes in which the majority of children will reach the age of 5, 6 or 7 during the school year (infant classes) can only have a maximum of 30 pupils. Where that limit is exceeded, schools are obliged to reduce that number by taking certain measures, such as employing an extra teacher or providing an extra classroom. Where these measures would cause prejudice to efficient education or the efficient use of resources, the admission authority can refuse to allocate any more places at the school (Infant Class Size Prejudice).

Please be aware there are limited circumstances in which an infant class size appeal can be upheld. The information in this document will allow you to make an informed decision about whether to submit an appeal. Where a child has been refused admission on this basis, an Appeal Panel can only offer a place to a child if it is satisfied that either:

- the admission of additional children would not breach the infant class size limit; or
- that the decision to refuse admission on the ground of the infant class size limit was not one which a reasonable admission authority would have made in the circumstances of the case; or
- that the child would have been offered a place if the admission arrangements had been properly implemented or the arrangements had not been contrary to the mandatory provisions in the School Admission Code and the School Standards and Framework Act 1998

### How do I appeal for a place at CPS?

If you decide to appeal you will need to complete the CPS appeal form with **your reasons, in writing, why you wish to appeal for your child**. This form is available from the school website or by requesting one from Admissions at the school. You will need to submit the appeal form to the school by **Monday 15<sup>th</sup> May 2017**. You may include any additional information which you feel is relevant to your appeal and return it to: **Admissions, Cathedral Primary School, College Square, Bristol, BS1 5TS**.

### How does the appeal process work?

Democratic Services at Bristol City Council is employed by CPS to administer and conduct school appeals on our behalf. They will organise an independent appeal panel which consists of 3 people with no prior connection with CPS, a Lay person, a Chair and a member acquainted with education. There will also be a clerk in attendance to minute the appeal.

The independent appeal panel must follow a two stage decision making process for all appeals.

**Stage 1** - You will be invited to attend, which will be in the presence of all those appealing for a place for Reception. A presenting officer from the school will present the school's case and its decision not to admit the child. The panel will examine the decision by the school to refuse admission, whether the admission arrangements were correctly and impartially applied and whether the admission of an additional child would prejudice the provision of efficient education or the efficient use of resources.

**Stage 2** - This is your individual appeal which will be held in private. The appeal panel must balance the prejudice to the school against your case for your child to be admitted. They will need to take into account your reasons for expressing a preference including what this school can offer your child that the allocated school or other schools cannot.

### What happens once the appeal has been lodged with the school?

CPS will acknowledge receipt of your appeal paperwork by letter or email and will forward all your appeal documents to Democratic Services.

### When will the appeal be heard?

The reception appeals for CPS are scheduled to start week commencing **26<sup>th</sup> June 2017**. You will receive notification in writing from Democratic Services 10 days prior to the appeal hearing with a date and time for you to attend.

### Where will the appeal be held?

Appeals for CPS will be heard in Bristol City Council's City Hall, College Green, Bristol BS1 5UY.

### Who decides the outcome of the appeal?

The independent appeal panel must either uphold or dismiss an appeal. **A panel's decision that a child shall be admitted is binding on the school and the parents.** If your appeal is successful then a place will be offered at the school immediately. As a result successful appeals will take the school over its PAN. If your appeal is unsuccessful then your child will remain on the waiting list.

### When do we know the result of the appeal?

Parent/carers will be notified by Democratic Services once all the reception appeals have been heard.

### What happens about the school place I've already been offered?

If you appeal, the place you have been offered at another school will be reserved by your home local authority pending the outcome of the appeal for CPS.



### **What if I change my mind about appealing?**

If, at any time, you want to withdraw your appeal or remove your child's name from the waiting list, please inform Admissions at CPS and Democratic Services immediately.

### **What if I do not attend my appeal hearing?**

Where an appellant fails, or is unable, to attend and it is impractical to offer an alternative date the appeal may go ahead in your absence and a decision reached based on the written information submitted.

### **What if a place becomes available from the waiting list?**

If your child qualifies for a place that has subsequently become available at CPS whilst you are waiting for your appeal to be heard then in this event your appeal will be cancelled.

N.B using your right to appeal will not affect your child being on the waiting list.

### **Please note:**

**There is a financial cost to the school for each appeal lodged. This has to be paid by CPS and is regardless of whether an appeal is withdrawn or the appeal hearing is not attended by the parent.**

### **How are places allocated during the 2nd round allocation from the waiting list?**

CPS is its own admission authority and maintains its own waiting list. The waiting list will consist of applicants who have requested to be put on the waiting list, those who lodge an appeal, or late applications received after the national closing date for primary applications on 15<sup>th</sup> January.

The waiting list will be ranked in line with the oversubscription criteria, and any late applicants who are 'looked after' or 'previously looked after' will be considered higher priority than any on time applications. A second round sibling applicant will get next priority at this stage.

Where a place becomes available and there is no higher priority to allocate as above, we will reoffer a place by carrying out a fresh round of random allocation of all remaining applicants on the waiting list.

If you require any further information please contact Admissions via email [admissions@bristolcathedral.org.uk](mailto:admissions@bristolcathedral.org.uk) or telephone 0117 35 35016.

This guidance is based on the published admission arrangements for CPS and the Department for Education, Code of practice on School Admission and School Admission Appeals. For copies of the DfE Codes of Practice please visit [www.education.gov.uk](http://www.education.gov.uk)

**RECEPTION ADMISSIONS - SEPTEMBER 2017**

**INITIAL ALLOCATION STATEMENT FOR CHANDAG INFANT SCHOOL**

**PLACES AVAILABLE: 60**

As Chandag Infant School was oversubscribed it was necessary to use Bath & North East Somerset's admissions criteria, as published in 'A Primary School for Your Child – 2017/18', to allocate the places available at the school. Applications for all schools are considered under an equal preference system which means that all preferences (1<sup>st</sup>, 2<sup>nd</sup> & 3<sup>rd</sup>) for each school are considered equally. If there are any cases where more than one of the school preferences named on the application form could have been met only the highest preference school has been allocated.

A total of **145 preferences** were originally received for Chandag Infant School which has an Admission Number of **60**.

If, under any of the categories listed, places were offered and refused, priority was given to those who live closest to the school as measured in a direct line between the home address and the school.

**How the initial allocation of places was made for this particular school:**

**0 Category A Applicants** - Looked after children or previously looked after children

**22 Category B Applicants** - ie Children who will have a sibling in attendance on the admission date at the preferred school and they either

- live within a 1.5 mile radius\* of the school; or
- live outside a 1.5 mile radius\* of the school but their sibling was offered a place prior to September 2013; or
- live outside a 1.5 mile radius\* of the school but it is their closest Community or Voluntary Controlled School

\*The 1.5 mile radius is measured from the address point of the school as defined by the Local Land & Property Gazetteer (LLPG)

**38 Category C Applicants** - Children who live closest to the school as measured in a direct line. **The furthest direct line distance between the preferred school and the home address offered in this category was 0.834 miles.**

**15 children in total have initially been refused a place at Chandag Infant School.** (All other preferences originally considered have qualified for another school as a higher preference)

**CLASS SIZE PREJUDICE APPEALS – Effects of Infant Class Size Legislation:**

Appeals for Chandag Infant School will be heard on the basis of Infant Class Size Prejudice as the school will organise with two Reception classes each containing 30 pupils with one full-time qualified teacher (or the equivalent of) in each class.

**Please see the enclosed statement of options for more information about Infant Class size appeals and the waiting list option.**

Please Note: If you decide to lodge a formal appeal for a place at this particular school your initial notification of intent to appeal should be sent to your home local authority by 2 May 2017 and your letter of appeal for Chandag Infant School should be sent by no later than 16 May 2017 to the Postal Address at: Admissions & Transport, People & Communities Department, Lewis House, Manvers Street, Bath, BA1 1JG

Date of Statement 18 April 2017

**ADMISSION TO INFANT/PRIMARY SCHOOL  
INITIAL ALLOCATION STATEMENT FOR ON-TIME APPLICATIONS  
CHARBOROUGH ROAD PRIMARY SCHOOL - SEPTEMBER 2017**

As Charborough Road Primary School was over-subscribed, it was necessary to use South Gloucestershire Council's admission criteria, as published in '*Admission to Primary Schools in South Gloucestershire September 2017 – August 2018*', to allocate the places available at the school.

102 applications were received by the 15 January 2017 for Charborough Road Primary School which has an Admission Number of 35. The Admission Level includes placements at the Special Resource Base for Speech and Language Difficulties.

**How the initial allocation of places was made:**

5 places were required for the Special Educational Needs Resource Base.

7 Local Siblings (within the Area of Prime Responsibility (APR)).

23 Children who live within the APR: the furthest distance offered a place under this criterion was 0.597 mile.

A total of 21 refusals have been made. Please note that some applications may have been either withdrawn by the parents/carers, or discounted where a higher preference of school has been offered.

Distances from home to school are measured in a direct line between the address point of the child's home and a central point within the main school buildings using the Local Authority's computerised mapping system.

**Can I remain on a waiting list for my preferred school(s)?**

Yes. You can remain on the waiting list for as long as you like.

**Can I appeal the decision not to offer my child a place at the school?**

Yes, all parents/carers whose child has been refused admission to a school may exercise their right of appeal. However, if the school has a full Reception class containing 30 pupils any appeals will be heard on Infant Class Size Prejudice.

Infant Class Size legislation states that classes where the majority of children will reach the age of 5, 6 or 7 during the school year must not contain more than 30 pupils with a single teacher.

April 2017



## APPEAL FORM

This form should only be completed if you wish to make a formal appeal for a place at Olympus Academy Trust:

### CHARBOROUGH ROAD PRIMARY SCHOOL

Please complete in black ink and return this form within 20 school days to:

Lisa Stevens, Bradley Stoke Community School, Fiddlers Wood Lane, Bradley Stoke, BS32 9BS

**INFANT CLASS SIZE** – Government legislation means that infant classes (Reception, Year 1 and Year 2) with one teacher cannot contain more than 30 pupils. Given the extremely limited grounds on which an appeal may be upheld, Infant Class Size Appeals are rarely successful.

At Infant Class Size Appeals the independent appeal panel can only look at:

- Whether the admission arrangements were lawful.
- Whether the admission arrangements were incorrectly applied and your child should have been offered a place.
- Whether it was unreasonable to refuse your preference. The appeal panel would need to be satisfied that the decision was so completely absurd or outrageous that no reasonable person, with the same facts, would have made that decision.

Parents/carers can find it frustrating when they realise how very limited the powers of the Appeal Panel are. We are therefore drawing this to your attention now, so you can make an informed choice about whether you wish to appeal or not. The purpose of this information is to explain clearly the role of the Appeal Panel and not in any way discourage you from appealing, which is your legal right if you feel you have grounds to do so.

Name of parent/carers	
Contact telephone no	
Signature	
Date	
Full name of child	
Date of birth	
Address of child	
Current school & year group	

Please indicate preference: 1<sup>st</sup>, 2<sup>nd</sup> or 3<sup>rd</sup>:

**PLEASE REMEMBER TO UPDATE OAT OF ANY CHANGES TO YOUR CONTACT DETAILS.**

### **Reasons for Preference/Grounds for Appeal**

**Please submit any supporting evidence with this appeal letter.**

This appeal is expected to be heard in the context of Infant Class Size.

Please indicate which circumstance you believe applies to your case.

A	The admission arrangements were not lawful
B	The admission arrangements were not correctly applied and if they had been my child would have been offered a place.
C	The decision not to offer my child a place was unreasonable (in a legal sense).

Please continue on a separate sheet, if necessary, and attach

**RECEPTION ADMISSIONS - SEPTEMBER 2017**

**INITIAL ALLOCATION STATEMENT FOR CHEW MAGNA PRIMARY SCHOOL**

**PLACES AVAILABLE: 15**

As Chew Magna Primary School was oversubscribed it was necessary to use Bath & North East Somerset's admissions criteria, as published in 'A Primary School for Your Child – 2017/18', to allocate the places available at the school. Applications for all schools are considered under an equal preference system which means that all preferences (1<sup>st</sup>, 2<sup>nd</sup> & 3<sup>rd</sup>) for each school are considered equally. If there are any cases where more than one of the school preferences named on the application form could have been met only the highest preference school has been allocated.

A total of **42 preferences** were originally received for Chew Magna Primary School which has a published Admission Number of **15**.

If, under any of the categories listed, places were offered and refused, priority was given to those who live closest to the school as measured in a direct line between the home address and the school.

**How the initial allocation of places was made for this particular school:**

**0 Category A Applicants** - Looked after children or previously looked after children

**6 Category B Applicants**- ie Children who will have a sibling in attendance on the admission date at the preferred school and they either

- live within a 1.5 mile radius\* of the school; or
- live outside a 1.5 mile radius\* of the school but their sibling was offered a place prior to September 2013; or
- live outside a 1.5 mile radius\* of the school but it is their closest Community or Voluntary Controlled School

\*The 1.5 mile radius is measured from the address point of the school as defined by the Local Land & Property Gazetteer (LLPG)

**9 Category C Applicants** - Children who live closest to the school as measured in a direct line. **The furthest direct line distance between the preferred school and the home address offered in this category was 3.623 miles.**

**1 child in total has initially been refused a place at Chew Magna Primary School.** (All other preferences originally considered have qualified for another school as a higher preference)

**Please see the enclosed statement of options for more information about appeals and the waiting list option.**

Please Note: If you decide to lodge a formal appeal for a place at this particular school your initial notification of intent to appeal should be sent to your home local authority by 2 May 2017 and your letter of appeal for Chew Magna Primary School should be sent by no later than 16 May 2017 to the Postal Address at: Admissions & Transport, People & Communities Department, Lewis House, Manvers Street, Bath, BA1 1JG

Date of Statement 18-April 2017



## **ADMISSION TO INFANT/PRIMARY SCHOOL**

### **INITIAL ALLOCATION STATEMENT FOR ON-TIME APPLICATIONS**

#### **CHRIST CHURCH INFANT SCHOOL (DOWNEND) - SEPTEMBER 2017**

As Christ Church Infant School was over-subscribed, it was necessary to use South Gloucestershire Council's admission criteria, as published in '*Admission to Primary Schools in South Gloucestershire September 2017 – August 2018*', to allocate the places available at the school.

196 applications were received by the 15 January 2017 for Christ Church Infant School which has an admission number of 75.

#### **How the initial allocation of places was made:**

1 Child with an Education, Health and Care Plan (EHC Plan).

4 Child in Public Care and Previously in Public Care

35 Local Siblings (within the Area of Prime Responsibility (APR)).

35 Children living within the APR: The furthest distance offered a place under this criterion was 0.492 mile.

A total of 39 refusals have been made. Please note that some applications may have been either withdrawn by the parents/carers, or discounted where a higher preference of school has been offered.

Distances from home to school are measured in a direct line between the address point of the child's home and a central point within the main school buildings using the Local Authority's computerised mapping system.

#### **Can I remain on a waiting list for my preferred school(s)?**

Yes. The waiting lists will be maintained until the end of Term 2 (December).

#### **CLASS SIZE PREJUDICE APPEALS – Effects of Infant Class Size Legislation:**

Appeals for Christ Church Infant School will be heard on the basis of Infant Class Size Prejudice where relevant measures would have to be taken not in September 2017, as the school will organise with three small discrete Reception classes, but in future years.

**Please see enclosed leaflet for more information.**



## **ADMISSION TO INFANT/PRIMARY SCHOOL**

### **INITIAL ALLOCATION STATEMENT FOR ON-TIME APPLICATIONS**

#### **CHRIST CHURCH PRIMARY SCHOOL (HANHAM) - SEPTEMBER 2017**

As Christ Church Primary School was over-subscribed, it was necessary to use South Gloucestershire Council's admission criteria, as published in '*Admission to Primary Schools in South Gloucestershire September 2017 – August 2018*', to allocate the places available at the school.

136 applications were received by the 15 January 2017 for Christ Church Primary School (Hanham) which has an admission number of 60.

#### **How the initial allocation of places was made:**

1 Child in Public Care and Previously in Public Care.

26 Local Siblings (within the Area of Prime Responsibility (APR)).

20 Children who live within the APR.

13 Children who live outside the APR. The furthest distance offered a place under this criterion was 0.926 mile.

1 refusal has been made. Please note that some applications may have been either withdrawn by the parents/carers, or discounted where a higher preference of school has been offered.

Distances from home to school are measured in a direct line between the address point of the child's home and a central point within the main school buildings using the Local Authority's computerised mapping system.

#### **Can I remain on a waiting list for my preferred school(s)?**

Yes. The waiting lists will be maintained until the end of Term 2 (December).

#### **CLASS SIZE PREJUDICE APPEALS – Effects of Infant Class Size Legislation:**

Appeals for Christ Church Primary School will be heard on the basis of Infant Class Size Prejudice as the school will organise with two Reception classes each containing 30 pupils with one full-time qualified teacher (or the equivalent of) in each class.

**Please see enclosed leaflet for more information.**





### **Allocation Statement for Elmlea Infant School - September 2017**

As Elmlea Infant School was oversubscribed, the criteria stated in the booklet '*A Guide for parents and carers on applying for a primary school place for the school year 2017-2018*' have been applied to allocate the places that are available at the school.

**244** on-time applications (*119 x 1<sup>st</sup> preferences, 69 x 2<sup>nd</sup> preferences, 56 x 3<sup>d</sup> preferences*) have been received for Elmlea Infant School, which has an Admission Number of **90**.

#### **How the Initial Allocation of Places was made**

The **90** places have been offered to the following children:

1. Those children who are defined as 'Children in Care'; or children who were previously in care, but immediately after being in care became subject to an adoption, child arrangements, or special guardianship order. (**2** places).
2. Those children with siblings already at Elmlea Infant School or Elmlea Junior School who will still be on roll in September 2017. (**40** places)
3. Those children living closest to Elmlea Infant School as measured in a direct line from the home address to the school (**48** places)

The furthest distance offered a place in this category was **770 meters**.

#### **CLASS SIZE PREJUDICE APPEALS - Effects of Infant Class Size Legislation.**

Appeals for Elmlea Infant School will be heard on the basis of Class Size Prejudice. The school has 3 Reception classes each containing 30 children.

Guidance on Class Size Prejudice Appeals is available on the School Admissions website.

**You should be aware that since the introduction of Infant Class Size Legislation in 2000, no appeals have been upheld in the parents' favour for this school.**



## **ADMISSION TO INFANT/PRIMARY SCHOOL**

### **INITIAL ALLOCATION STATEMENT FOR ON-TIME APPLICATIONS**

#### **EMERSON'S GREEN PRIMARY SCHOOL - SEPTEMBER 2017**

As Emerson's Green Primary School was over-subscribed, it was necessary to use South Gloucestershire Council's admission criteria, as published in '*Admission to Primary Schools in South Gloucestershire September 2017 – August 2018*', to allocate the places available at the school.

160 applications were received by the 15 January 2017 for Emerson's Green Primary School which has an admission number of 30. The Admission Level includes placements at the Special Resource Base for Physical Disabilities and Visual Impairment.

#### **How the initial allocation of places was made:**

2 places were required for the Special Educational Needs Resource Base.

1 Child in Public Care and Previously in Public Care.

18 Local Siblings (within the Area of Prime Responsibility (APR)).

9 Children living within the APR: The furthest distance offered a place under this criterion was 0.362 mile.

A total of 15 refusals have been made. Please note that some applications may have been either withdrawn by the parents/carers, or discounted where a higher preference of school has been offered.

Distances from home to school are measured in a direct line between the address point of the child's home and a central point within the main school buildings using the Local Authority's computerised mapping system.

#### **Can I remain on a waiting list for my preferred school(s)?**

Yes. The waiting lists will be maintained until the end of Term 2 (December).

#### **CLASS SIZE PREJUDICE APPEALS – Effects of Infant Class Size Legislation:**

Appeals for Emerson's Green Primary School will be heard on the basis of Infant Class Size Prejudice as the school will organise with one Reception class containing 30 pupils with one full-time qualified teacher (or the equivalent of).

**Please see enclosed leaflet for more information.**



### **Allocation Statement for Fair Furlong Primary School - September 2017**

As Fair Furlong Primary School was oversubscribed, the criteria stated in 'A guide for parents and carers on applying for a primary school place for the school year 2017 – 2018' have been applied to allocate the places that are available at the school.

**146** on-time applications (*74 x 1<sup>st</sup> preferences, 44 x 2<sup>nd</sup> preferences, 28 x 3<sup>rd</sup> preferences*) have been received for Fair Furlong Primary School, which has an Admission Number of 60.

#### **How the Initial Allocation of Places was made**

The **60** places have been offered to the following children:

1. Children in the care of the Local Authority or who were previously in Care but immediately after being in Care became subject to an adoption order, child arrangement order or special guardianship order. (**1** place)
2. Those children with siblings already at Fair Furlong Primary School and who will still be there in September 2017. (**23** places)
3. Those children living closest to Fair Furlong Primary School as measured in a direct line from the home address to the school. (**36** places)  
The furthest distance offered a place in this category was **0.801 km**.

#### **CLASS SIZE PREJUDICE APPEALS - Effects of Infant Class Size Legislation.**

Appeals for Fair Furlong Primary School will be heard on the basis of Class Size Prejudice as the school will have two Reception classes each containing 30 pupils.

Guidance on Class Size Prejudice Appeals is available on the School Admissions website.

You should be aware that since the introduction of Infant Class Size Legislation in 2000, no appeals have been upheld in the parents' favour for this school.

## **Allocation Statement for Filton Avenue Primary School - September 2017**

As Filton Avenue Primary School was over-subscribed, the criteria stated in the Bristol City Council 'A guide for parents and carers on applying for a primary school place for the school year 2017/18' have been applied to allocate the places that are available at the school.

**188** on-time applications have been received for Filton Avenue Primary School, which has an admission number of 120.

### **How the initial allocation of places was made by the local authority on behalf of Filton Avenue Primary School:**

The **120** places have been offered to the following children:

1. Children in the care of the local authority, or where previously in care but immediately after being in care became the subject to an adoption, residence or special guardianship order (**0** places).
2. Those children with siblings already at Filton Avenue Primary School and who will still be there in September 2017 (**51** places).
3. Those children living closest to Filton Avenue Primary School as measured in a direct line from the home address to the school (**69** places). The furthest distance in this category was 2511 metres.

### **Class Size Prejudice Appeals – Effects of Infant Class Size Legislation**

Appeals for Filton Avenue Primary School will be heard on the basis of class size prejudice as the school will be running 4 Reception classes each containing 30 pupils.

Please return to the above address marked for the attention of the Business Manager

**Letter of Appeal**

Full name of Child \_\_\_\_\_

Date of Birth \_\_\_\_\_

I wish to appeal for a place at Filton Avenue Primary School

Name of Parent / Carer \_\_\_\_\_

Signature of Parent / Carer \_\_\_\_\_

Date \_\_\_\_\_

**Grounds for Appeal**

You must read the enclosed information on the effects of infant class size legislation and indicate below which of the restricted circumstances you believes applies in your case

	Tick
1. Your child would have been offered a place if the admission arrangements had been properly implemented.	<input type="checkbox"/>
2. Your child would have been offered a place if the admission arrangements had not be contrary to mandatory provisions in the School Admissions Code and School Standards and Framework Act 1998.	<input type="checkbox"/>
3. That the decision not to offer your child a place is not one which a reasonable admission authority would make in the circumstances of your case.	<input type="checkbox"/>
4. Other reason. Please provide details in the space below and continue overleaf or on separate sheet if necessary.	<input type="checkbox"/>

**ADMISSION TO INFANT/PRIMARY SCHOOL  
INITIAL ALLOCATION STATEMENT FOR ON-TIME APPLICATIONS  
FILTON HILL PRIMARY SCHOOL - SEPTEMBER 2017**

As Filton Hill Primary School was over-subscribed, it was necessary to use South Gloucestershire Council's admission criteria, as published in '*Admission to Primary Schools in South Gloucestershire September 2017 – August 2018*', to allocate the places available at the school.

57 applications were received by the 15 January 2017 for Filton Hill Primary School which has an Admission Number of 30.

**How the initial allocation of places was made:**

12 Local Siblings (within the Area of Prime Responsibility (APR)).

16 Children who live within the APR.

2 Children who live outside the APR. The furthest distance offered a place under this criterion was 0.809 mile.

A total of 8 refusals have been made. Please note that some applications may have been either withdrawn by the parents/carers, or discounted where a higher preference of school has been offered.

Distances from home to school are measured in a direct line between the address point of the child's home and a central point within the main school buildings using the Local Authority's computerised mapping system.

**Can I remain on a waiting list for my preferred school(s)?**

Yes. You can remain on the waiting list for as long as you like.

**Can I appeal the decision not to offer my child a place at the school?**

Yes. All parents/carers whose child has been refused admission to a school may exercise their right of appeal.

**CLASS SIZE PREJUDICE APPEALS – Effects of Infant Class Size Legislation:**

Appeals for Filton Hill Primary School will be heard on the basis of Infant Class Size Prejudice as the school will organise with one Reception class containing 30 pupils with one full-time qualified teacher (or the equivalent of).

**Please see enclosed leaflet for more information.**

April 2017



## APPEAL FORM

This form should only be completed if you wish to make a formal appeal for a place at Olympus Academy Trust:

### FILTON HILL PRIMARY SCHOOL

Please complete in black ink and return this form within 20 school days to:

Lisa Stevens, Bradley Stoke Community School, Fiddlers Wood Lane, Bradley Stoke, BS32 9BS

**INFANT CLASS SIZE** – Government legislation means that infant classes (Reception, Year 1 and Year 2) with one teacher cannot contain more than 30 pupils. Given the extremely limited grounds on which an appeal may be upheld, Infant Class Size Appeals are rarely successful.

At Infant Class Size Appeals the independent appeal panel can only look at:

- Whether the admission arrangements were lawful.
- Whether the admission arrangements were incorrectly applied and your child should have been offered a place.
- Whether it was unreasonable to refuse your preference. The appeal panel would need to be satisfied that the decision was so completely absurd or outrageous that no reasonable person, with the same facts, would have made that decision.

Parents/carers can find it frustrating when they realise how very limited the powers of the Appeal Panel are. We are therefore drawing this to your attention now, so you can make an informed choice about whether you wish to appeal or not. The purpose of this information is to explain clearly the role of the Appeal Panel and not in any way discourage you from appealing, which is your legal right if you feel you have grounds to do so.

Name of parent/carers	
Contact telephone no	
Signature	
Date	
Full name of child	
Date of birth	
Address of child	
Current school & year group	

Please indicate preference: 1<sup>st</sup>, 2<sup>nd</sup> or 3<sup>rd</sup>:

**PLEASE REMEMBER TO UPDATE OAT OF ANY CHANGES TO YOUR CONTACT DETAILS.**

### **Reasons for Preference/Grounds for Appeal**

**Please submit any supporting evidence with this appeal letter.**

This appeal is expected to be heard in the context of Infant Class Size.

Please indicate which circumstance you believe applies to your case.

A	The admission arrangements were not lawful
B	The admission arrangements were not correctly applied and if they had been my child would have been offered a place.
C	The decision not to offer my child a place was unreasonable (in a legal sense).



Please continue on a separate sheet, if necessary, and attach



### **Allocation Statement for Fishponds Church of England Academy – September 2017**

As Fishponds Church of England Academy was oversubscribed, the criteria stated in the booklet '*A Guide for parents and carers on applying for a primary school place for the school year 2017-2018*' have been applied to allocate the places that are available at the academy.

**170** on-time applications (*78 x 1<sup>st</sup> preferences, 53 x 2<sup>nd</sup> preferences, 39 x 3<sup>d</sup> preferences*) have been received for Fishponds Church of England Academy, which has an Admission Number of **60**.

#### **How the Initial Allocation of Places was made**

The **60** places have been offered to the following children:

1. Those children who are defined as 'Children in Care'; or children who were previously in care, but immediately after being in care became subject to an adoption, child arrangements, or special guardianship order. (**1** place).
2. Those children with siblings already at Fishponds Church of England Academy who will still be on roll in September 2017. (**32** places)
3. Children of regular worshippers at the following places: The parish churches of St Mary and All Saints, Fishponds. Other Anglican churches. Another Christian church which is in membership of, or has observer status at Churches Together in Britain and Ireland. Places of worship of other faith communities or the principal religions represented in England other than Christianity. (**4** places)
4. Those children living closest to Fishponds Church of England Academy as measured in a direct line from the home address to the school (**23** places)

The furthest distance offered a place in this category was **0.865 km**.

#### **CLASS SIZE PREJUDICE APPEALS - Effects of Infant Class Size Legislation.**

Appeals for Fishponds Church of England Academy will be heard on the basis of Class Size Prejudice. The academy has two Reception classes each containing 30 children.

Guidance on Class Size Prejudice Appeals is available on the School Admissions website.

**You should be aware that since the introduction of Infant Class Size Legislation in 2000, no appeals have been upheld in the parents' favour for the academy.**



## **ADMISSION TO INFANT/PRIMARY SCHOOL**

### **INITIAL ALLOCATION STATEMENT FOR ON-TIME APPLICATIONS**

#### **FRENCHAY PRIMARY SCHOOL - SEPTEMBER 2017**

As Frenchay Primary School was over-subscribed, it was necessary to use South Gloucestershire Council's admission criteria, as published in '*Admission to Primary Schools in South Gloucestershire September 2017 – August 2018*', to allocate the places available at the school.

60 applications were received by the 15 January 2017 for Frenchay Primary School which has an admission number of 20.

#### **How the initial allocation of places was made:**

9 Local Siblings (within the Area of Prime Responsibility (APR)).

5 Children who live within the APR.

6 Children who live outside the APR: The furthest distance offered a place under this criterion was 0.392 mile.

A total of 11 refusals have been made. Please note that some applications may have been either withdrawn by the parents/carers, or discounted where a higher preference of school has been offered.

Distances from home to school are measured in a direct line between the address point of the child's home and a central point within the main school buildings using the Local Authority's computerised mapping system.

#### **Can I remain on a waiting list for my preferred school(s)?**

Yes. The waiting lists will be maintained until the end of Term 2 (December).

#### **CLASS SIZE PREJUDICE APPEALS – Effects of Infant Class Size Legislation:**

Appeals for Frenchay Primary School will be heard on the basis of Infant Class Size Prejudice where relevant measures would have to be taken not in September 2017, as the school will organise with one small discrete Reception class, but in future years.

**Please see enclosed leaflet for more information.**



### **Allocation Statement for Henleaze Infant School - September 2017**

As Henleaze Infant School was oversubscribed, the criteria stated in the booklet '*A Guide for parents and carers on applying for a primary school place for the school year 2017-2018*' have been applied to allocate the places that are available at the school.

**248** on-time applications (*93 x 1<sup>st</sup> preferences, 108 x 2<sup>nd</sup> preferences, 47 x 3<sup>d</sup> preferences*) have been received for Henleaze Infant School, which has an Admission Number of **90**.

#### **How the Initial Allocation of Places was made**

The **90** places have been offered to the following children:

1. Those children who are defined as 'Children in Care'; or children who were previously in care, but immediately after being in care became subject to an adoption, child arrangements, or special guardianship order. (**3** places).
2. Those children with siblings already at Henleaze Infant School or Henleaze Junior School who will still be on roll in September 2017. (**37** places)
3. Those children living closest to Henleaze Infant School as measured in a direct line from the home address to the school (**50** places)

The furthest distance offered a place in this category was **999 meters**.

#### **CLASS SIZE PREJUDICE APPEALS - Effects of Infant Class Size Legislation.**

Appeals for Henleaze Infant School will be heard on the basis of Class Size Prejudice. The school has 3 Reception classes each containing 30 children.

Guidance on Class Size Prejudice Appeals is available on the School Admissions website.

**You should be aware that since the introduction of Infant Class Size Legislation in 2000, no appeals have been upheld in the parents' favour for this school.**



### **Allocation Statement for Hillcrest Primary School - September 2017**

As Hillcrest Primary School was oversubscribed, the criteria stated in 'A guide for parents and carers on applying for a primary school place for the school year 2017 – 2018' have been applied to allocate the places that are available at the school.

**184** on-time applications (*95 x 1<sup>st</sup> preferences, 54 x 2<sup>nd</sup> preferences, 35 x 3<sup>d</sup> preferences*) have been received for Hillcrest Primary School, which has an Admission Number of 60.

#### **How the Initial Allocation of Places was made**

The **60** places have been offered to the following children:

1. Children in the care of the Local Authority or who were previously in Care but immediately after being in Care became subject to an adoption order, child arrangement order or special guardianship order. (**3** places)
2. Those children with siblings already at Hillcrest Primary School and who will still be there in September 2017. (**36** places)
3. Those children living closest to Hillcrest Primary School as measured in a direct line from the home address to the school. (**22** places) An over allocation of 1 was made to enable twins to be offered places as per the School Admissions Code.  
The furthest distance offered a place in this category was **0.299 km**.

#### **CLASS SIZE PREJUDICE APPEALS - Effects of Infant Class Size Legislation.**

Appeals for Hillcrest Primary School will be heard on the basis of Class Size Prejudice as the school will have two Reception classes each containing 30 pupils.

Guidance on Class Size Prejudice Appeals is available on the School Admissions website



### **Allocation Statement for Holymead Primary School - September 2017**

As Holymead Primary School was oversubscribed, the criteria stated in the booklet '*A Guide for parents and carers on applying for a primary school place for the school year 2017-2018*' have been applied to allocate the places that are available at the school.

**253** on-time applications (*97 x 1<sup>st</sup> preferences, 122 x 2<sup>nd</sup> preferences, 34 x 3<sup>d</sup> preferences*) have been received for Holymead Primary School, which has an Admission Number of 90.

#### **How the Initial Allocation of Places was made**

The **90** places have been offered to the following children:

1. Those children who are defined as 'Children in Care'; or children who were previously in care, but immediately after being in care became subject to an adoption order, child arrangement order, or special guardianship order. (**2** places).
2. Those children with siblings already at Holymead Primary School who will still be on roll in September 2017. (**44** places)
3. Those children living closest to Holymead Primary School as measured in a direct line from the home address to the school (**44** places) Holymead Primary School is on a split site, the home to school distance is measured from a point equidistant between the two sites.

The furthest distance offered a place in this category was **0.722 km**.

#### **CLASS SIZE PREJUDICE APPEALS - Effects of Infant Class Size Legislation.**

Appeals for Holymead Primary School will be heard on the basis of Class Size Prejudice. The school has three Reception classes each containing 30 children.

Guidance on Class Size Prejudice Appeals is available on the School Admissions website.

**You should be aware that since the introduction of Infant Class Size Legislation in 2000, no appeals have been upheld in the parents' favour for this school.**



### **Allocation Statement for Horfield CE Primary School - September 2017**

As Horfield CE Primary School was oversubscribed, the criteria stated in the booklet '*A Guide for parents and carers on applying for a primary school place for the school year 2017-2018*' have been applied to allocate the places that are available at the school.

**140** on-time applications (*59 x 1<sup>st</sup> preferences, 36 x 2<sup>nd</sup> preferences, 45 x 3<sup>rd</sup> preferences*) have been received for Horfield CE Primary School, which has an Admission Number of **60**.

#### **How the Initial Allocation of Places was made**

The **60** places have been offered to the following children:

1. Those children who are defined as 'Children in Care'; or children who were previously in care, but immediately after being in care became subject to an adoption, child arrangements, or special guardianship order. (**2** places).
2. Those children with siblings already at Horfield CE Primary School who will still be on roll in September 2017. (**26** places)
3. Those children living closest to Horfield CE Primary School as measured in a direct line from the home address to the school (**32** places)

The furthest distance offered a place in this category was **854 meters**.

#### **CLASS SIZE PREJUDICE APPEALS - Effects of Infant Class Size Legislation.**

Appeals for Horfield CE Primary School will be heard on the basis of Class Size Prejudice. The school has 2 Reception classes each containing 30 children.

Guidance on Class Size Prejudice Appeals is available on the School Admissions website.

**You should be aware that since the introduction of Infant Class Size Legislation in 2000, no appeals have been upheld in the parents' favour for this school.**

### **Allocation Statement for Ilminster Avenue E-Act Academy - September 2017**

As Ilminster Avenue E-Act Academy was oversubscribed, the criteria stated in 'A guide for parents and carers on applying for a primary school place for the school year 2017 – 2018' have been applied to allocate the places that are available at the Academy.

**91** on-time applications (*44 x 1<sup>st</sup> preferences, 25 x 2<sup>nd</sup> preferences, 22 x 3<sup>rd</sup> preferences*) have been received for Ilminster Avenue E-Act Academy, which has an Admission Number of 50.

#### **How the Initial Allocation of Places was made**

The 50 places have been offered to the following children:

1. Children in the care of the Local Authority or who were previously in Care but immediately after being in Care became subject to an adoption order, child arrangement order or special guardianship order. (**1** place)
2. Those children with siblings already at Ilminster Avenue E-Act Academy and who will still be there in September 2017. (**29** places)
3. Those children living closest to Ilminster Avenue E-Act Academy as measured in a direct line from the home address to the school. (**20** places)  
The furthest distance offered a place in this category was **2.490 km**.



## **Letter of Appeal – Ilminster Avenue E Act Academy**

Please submit a separate letter for each school

### **Child's details**

**First Name(s):** \_\_\_\_\_

**Surname/Family Name:** \_\_\_\_\_

**Date of Birth:** \_\_\_\_/\_\_\_\_/\_\_\_\_ **Gender:** m ☐ f ☐

**Address:** \_\_\_\_\_  
\_\_\_\_\_

**I wish to appeal for a place at** \_\_\_\_\_ **School**

### **Reasons for Preference/Grounds for Appeal:**

*If required, please continue on a separate sheet.*

**Name of Parent/Carer (BLOCK CAPITALS):** \_\_\_\_\_

**Signature of Parent/Carer:** \_\_\_\_\_

**Date:** \_\_\_\_/\_\_\_\_/\_\_\_\_

**Please return to the School Admissions (Parkview Campus), PO Box 3176, Bristol, BS3 9FS  
by 23<sup>rd</sup> May 2017**



## Reception School Appeals (September 2017) – Infant Class Size Legislation

To ensure the panel considers all your information/evidence, you **must** submit your grounds of appeal in writing by **23<sup>rd</sup> May 2017**. The deadline will be notified when you are given notice of the hearing date.

**VERY IMPORTANT:** If you do not submit all your information and evidence by the specified deadline, the Panel has to decide before the hearing starts whether or not to accept the late information. In deciding, the panel will take into account the significance of the late information and the effect of a possible need to adjourn the hearing. It may be necessary to adjourn the hearing to a different date to enable all parties to consider further the late information/evidence submitted.

The Infant Class Size legislation states that infant classes (Reception, year 1 and year 2) with one Teacher may not contain more than 30 pupils. Following the introduction of infant class size limits, the Admission Authority does not have to meet parental preference if this would mean having to take 'qualifying measures'. Qualifying measures include those such as: - employing an additional teacher; building an extra classroom or a reorganisation of classes.

The Admission Authority can refuse to give a child a place if it would take a class over 30 pupils and cause 'class size prejudice'.

The Independent Appeal Panel may only uphold an appeal if:

- (a) The admission of an additional child would not breach the Infant Class Size limit.
- (b) The admission arrangements did not comply with admissions law, or were not correctly and impartially applied and your child would have been offered a place if the arrangements had complied or had been correctly and impartially applied.
- (c) The decision to refuse admission was not one which a reasonable Admission Authority would have made in the circumstances of the case.

Given the limited nature of the possible grounds on which an appeal may be upheld, Infant Class Size Appeals are rarely successful. Parents/Carers often find it frustrating when they realise how very limited the powers of the appeal panel are. This is being drawn to your attention now, so that you can make a more informed decision about going ahead with the appeal. The purpose of this guidance is to clarify the legislation and explain the role of the Panel. It is not meant in any way to discourage you from appealing or attending the hearing which is your legal right.

### What is an 'infant class size' appeal?

The law states that there must not be more than 30 children in an infant class (that is, classes containing reception, year 1 and year 2 children). This applies even if other adults are always present, and/or some children are absent. There are a few circumstances in which an additional child or children may be classed as an 'exception' and the class sizes goes over 30. But if children leave and the class size returns to 30, that does not mean extra children can be admitted again.

## Children & Young People's Services

Team/Service Area  
School Admissions (Parkview)  
PO Box 3176  
Bristol BS3 9FS

Ali Mannering  
Head of Trading With  
Schools (Interim)

Website  
[www.bristol.gov.uk/admissions](http://www.bristol.gov.uk/admissions)  
Email  
School.admissions@bristol.gov.uk

So when a parent is appealing for a place in an infant class, the panel's task is to review the decision already made. It does not have the flexibility to say that your personal circumstances mean that you should have a place at the school, if this would take the number of children in the class over 30. This makes an infant class size appeal different to other school admissions appeals.

### **So will it be an infant class size appeal if the school admits under 30 children each year?**

It might, because some schools organise their teaching in mixed-year classes, and it is not for the panel to direct how the school organises its classes. For example, where a school admits 20 children each year, but teaches reception, year 1 and year 2 in two classes of 30, an appeal for a place would be an infant class size appeal. The numbers can sometimes seem quite complicated but this will be explained to you at the appeal, and properly considered by the panel.

### **Can an appeal panel ever uphold an infant class size appeal?**

Yes. If the admissions authority has made a mistake in applying the admissions criteria which means you have been wrongly denied a place, then the panel will uphold the appeal. You have to show that either the admission authority ignored relevant information, or took into account irrelevant information, or that the decision was perverse in light of the admission arrangements.

### **Such mistakes might be:**

Not taking account of a sibling at the school

Not measuring the home to school distance accurately. If you believe your child's home to school distance has been calculated incorrectly, please raise this with the admission authority before the hearing date to enable them to check the distance.

The panel can also uphold an appeal if it considers that the child would have been offered a place if the admissions arrangements had not been 'contrary to mandatory provisions in the School Admissions Code'. This is something which should have been sorted out well before an appeal, but if your child missed out on a place because of this, the panel should uphold the appeal.

The panel can uphold an appeal if it considers that the decision not to offer a place was 'perverse in light of the published admission arrangements'. The threshold for 'perverse' is extremely high in infant class size appeals.

### **What might be 'perverse'?**

Most parents who have been refused a place at their preferred school consider this refusal to be perverse. But the word has a stronger meaning in its legal sense. It means 'beyond the range of responses open to a reasonable decision maker', or 'a decision which is so outrageous in its defiance of logic or of accepted moral standards that no sensible person who had applied his mind to the question could have arrived at it'. It is a high threshold and means more than extreme inconvenience and/or practical difficulties.

A decision that makes it impossible for you to transport all your family to school on-time, or even impossible for you to continue working, is very unlikely to be perverse. The courts have established this. If the admissions authority had refused a place to a child whose family had had to move house under a witness protection scheme, a panel might decide that the decision was perverse. But it is the panel's decision.

In simpler terms: It is an illogical decision or irrational/wildly ridiculous decision which is not based on the facts of the case.

## **Children & Young People's Services**

**Team/Service Area**  
School Admissions (Parkview)  
PO Box 3176  
Bristol BS3 9FS

**Ali Mannering**  
Head of Trading With  
Schools (Interim)

**Website**  
[www.bristol.gov.uk/admissions](http://www.bristol.gov.uk/admissions)  
**Email**  
School.admissions@bristol.gov.uk

## Can I still attend the appeal hearing?

Yes - appeal panels must allow parents, who are appealing against their child's non admission to a school, the opportunity to appear in person and to speak at the hearing. You are free to talk about personal factors, such as the convenience of the journey between your home and the school at the appeal hearing, but in this type of appeal the panel cannot take them into account unless they are relevant to the very limited circumstances outlined above.

You may wish to seek advice from other sources such as the Advisory Centre for Education (ACE) on the school appeals process.

Advisory Centre for Education operates an advice service and provides online leaflets for parents: [www.ace-ed.org.uk](http://www.ace-ed.org.uk)

## Children & Young People's Services

**Team/Service Area**  
School Admissions (Parkview)  
PO Box 3176  
Bristol BS3 9FS

**Ali Mannering**  
Head of Trading With  
Schools (Interim)

**Website**  
[www.bristol.gov.uk/admissions](http://www.bristol.gov.uk/admissions)  
**Email**  
School.admissions@bristol.gov.uk



## **ADMISSION TO INFANT/PRIMARY SCHOOL**

### **INITIAL ALLOCATION STATEMENT FOR ON-TIME APPLICATIONS**

#### **KINGS' FOREST PRIMARY SCHOOL - SEPTEMBER 2017**

As Kings' Forest Primary School was over-subscribed, it was necessary to use South Gloucestershire Council's admission criteria, as published in '*Admission to Primary Schools in South Gloucestershire September 2017 – August 2018*', to allocate the places available at the school.

133 applications were received by the 15 January 2017 for Kings' Forest Primary School which has an admission number of 60.

#### **How the initial allocation of places was made:**

27 Local Siblings (within the Area of Prime Responsibility (APR)).

33 Children living within the APR and closest to the school: The furthest distance offered a place under this criterion was 0.705 mile.

A total of 26 refusals have been made. Please note that some applications may have been either withdrawn by the parents/carers, or discounted where a higher preference of school has been offered.

Distances from home to school are measured in a direct line between the address point of the child's home and a central point within the main school buildings using the Local Authority's computerised mapping system.

#### **Can I remain on a waiting list for my preferred school(s)?**

Yes. The waiting lists will be maintained until the end of Term 2 (December).

#### **CLASS SIZE PREJUDICE APPEALS – Effects of Infant Class Size Legislation:**

Appeals for Kings' Forest Primary School will be heard on the basis of Infant Class Size Prejudice as the school will organise with two Reception classes each containing 30 pupils with one full-time qualified teacher (or the equivalent of) in each class.

**Please see enclosed leaflet for more information.**



### **Allocation Statement for Knowle Park Primary School - September 2017**

As Knowle Park Primary School was oversubscribed, the criteria stated in 'A guide for parents and carers on applying for a primary school place for the school year 2017 – 2018' have been applied to allocate the places that are available at the school.

**214** on-time applications (*88 x 1<sup>st</sup> preferences, 77 x 2<sup>nd</sup> preferences, 49 x 3<sup>rd</sup> preferences*) have been received for Knowle Park Primary School, which has an Admission Number of 90.

#### **How the Initial Allocation of Places was made**

The **90** places have been offered to the following children:

1. Children in the care of the Local Authority or who were previously in Care but immediately after being in Care became subject to an adoption order, child arrangement order or special guardianship order. (**1** place)
2. Those children with siblings already at Knowle Park Primary School and who will still be there in September 2017. (**40** places)
3. Those children living closest to Knowle Park Primary School as measured in a direct line from the home address to the school. (**49** places)  
The furthest distance offered a place in this category was **0.797 km**.

#### **CLASS SIZE PREJUDICE APPEALS - Effects of Infant Class Size Legislation.**

Appeals for Knowle Park Primary School will be heard on the basis of Class Size Prejudice as the school will have three Reception classes each containing 30 pupils.

Guidance on Class Size Prejudice Appeals is available on the School Admissions website.

You should be aware that since the introduction of Infant Class Size Legislation in 2000, no appeals have been upheld in the parents' favour for this school.

# Little Mead Primary Academy

Gosforth Road  
Bristol  
BS10 6DS

0117 377 3279  
little.mead.p@bristol-schools.uk  
www.littlemead.bristol.sch.uk



## **Allocation Statement for Little Mead Primary Academy - September 2017**

As Little Mead Primary Academy was oversubscribed, the criteria stated in the booklet 'A Guide for parents and carers on applying for a primary school place for the school year 2017-2018' have been applied to allocate the places that are available at the school.

**134** on-time applications (65 x 1<sup>st</sup> preferences, 43 x 2<sup>nd</sup> preferences, 26 x 3<sup>d</sup> preferences) have been received for Little Mead Primary Academy, which has an Admission Number of **60**.

### **How the Initial Allocation of Places was made**

The **60** places have been offered to the following children:

1. Those children who are defined as 'Children in Care'; or children who were previously in care, but immediately after being in care became subject to an adoption, child arrangements, or special guardianship order. (**0** places).
2. Those children with siblings already at Little Mead Primary Academy who will still be on roll in September 2017. (**22** places)
3. Those children living closest to Little Mead Primary Academy as measured in a direct line from the home address to the school (**38** places)

The furthest distance offered a place in this category was **908 metres**.

### **CLASS SIZE PREJUDICE APPEALS - Effects of Infant Class Size Legislation.**

Appeals for Little Mead Primary Academy will be heard on the basis of Class Size Prejudice. The school has two Reception classes each containing 30 children.

Guidance on Class Size Prejudice Appeals is available on the School Admissions website.

**You should be aware that since the introduction of Infant Class Size Legislation in 2000, no appeals have been upheld in the parents' favour for this school.**



Endeavour Academy Trust: a company limited by guarantee. Registered in England & Wales.  
Registered office: Gosforth Road, Bristol, BS10 6DS. Company number: 08245853.

**National Support School**  
designated by



**National College for  
Teaching & Leadership**



## **ADMISSION TO INFANT/PRIMARY SCHOOL**

### **INITIAL ALLOCATION STATEMENT FOR ON-TIME APPLICATIONS**

#### **MANGOTSFIELD PRIMARY SCHOOL - SEPTEMBER 2017**

As Mangotsfield Primary School was over-subscribed, it was necessary to use South Gloucestershire Council's admission criteria, as published in '*Admission to Primary Schools in South Gloucestershire September 2017 – August 2018*', to allocate the places available at the school.

199 applications were received by the 15 January 2017 for Mangotsfield Primary School which has an admission number of 90.

#### **How the initial allocation of places was made:**

42 Local Siblings (within the Area of Prime Responsibility (APR)).

48 Children living within the APR who live closest to the school: The furthest distance offered a place under this criterion was 0.497 mile.

A total of 21 refusals have been made. Please note that some applications may have been either withdrawn by the parents/carers, or discounted where a higher preference of school has been offered.

Distances from home to school are measured in a direct line between the address point of the child's home and a central point within the main school buildings using the Local Authority's computerised mapping system.

#### **Can I remain on a waiting list for my preferred school(s)?**

Yes. The waiting lists will be maintained until the end of Term 2 (December).

#### **CLASS SIZE PREJUDICE APPEALS – Effects of Infant Class Size Legislation:**

Appeals for Mangotsfield Primary School will be heard on the basis of Infant Class Size Prejudice as the school will organise with three Reception classes each containing 30 pupils with one full-time qualified teacher (or the equivalent of) in each class.

**Please see enclosed leaflet for more information.**



**ADMISSION TO INFANT/PRIMARY SCHOOL  
INITIAL ALLOCATION STATEMENT FOR ON-TIME APPLICATIONS  
MEADOWBROOK PRIMARY SCHOOL - SEPTEMBER 2017**

As Meadowbrook Primary School was over-subscribed, it was necessary to use South Gloucestershire Council's admission criteria, as published in '*Admission to Primary Schools in South Gloucestershire September 2017 – August 2018*', to allocate the places available at the school.

127 applications were received by the 15 January 2017 for Meadowbrook Primary School which has an admission number of 60.

**How the initial allocation of places was made:**

1 place was required for children who are Statemented for Special Educational Needs or with an Education, Health and Care Plan in place.

28 Local Siblings.

31 Children who live closest to the school: The furthest distance offered a place under this criterion was 1.670 mile.

A total of 1 refusal has been made. Please note that some applications may have been either withdrawn by the parents/carers, or discounted where a higher preference of school has been offered.

Distances from home to school are measured in a direct line between the address point of the child's home and a central point within the main school buildings using the Local Authority's computerised mapping system.

**Can I remain on a waiting list for my preferred school(s)?**

Yes. You can remain on the waiting list for as long as you like.

**Can I appeal the decision not to offer my child a place at the school?**

Yes, all parents/carers whose child has been refused admission to a school may exercise their right of appeal. However, if the school has full Reception classes each containing 30 pupils any appeals will be heard on Infant Class Size Prejudice.

Infant Class Size legislation states that classes where the majority of children will reach the age of 5, 6 or 7 during the school year must not contain more than 30 pupils with a single teacher.

April 2017



## APPEAL FORM

This form should only be completed if you wish to make a formal appeal for a place at Olympus Academy Trust:

### MEADOWBROOK PRIMARY SCHOOL

Please complete in black ink and return this form within 20 school days to:

Lisa Stevens, Bradley Stoke Community School, Fiddlers Wood Lane, Bradley Stoke, BS32 9BS

**INFANT CLASS SIZE** – Government legislation means that infant classes (Reception, Year 1 and Year 2) with one teacher cannot contain more than 30 pupils. Given the extremely limited grounds on which an appeal may be upheld, Infant Class Size Appeals are rarely successful.

At Infant Class Size Appeals the independent appeal panel can only look at:

- Whether the admission arrangements were lawful.
- Whether the admission arrangements were incorrectly applied and your child should have been offered a place.
- Whether it was unreasonable to refuse your preference. The appeal panel would need to be satisfied that the decision was so completely absurd or outrageous that no reasonable person, with the same facts, would have made that decision.

Parents/carers can find it frustrating when they realise how very limited the powers of the Appeal Panel are. We are therefore drawing this to your attention now, so you can make an informed choice about whether you wish to appeal or not. The purpose of this information is to explain clearly the role of the Appeal Panel and not in any way discourage you from appealing, which is your legal right if you feel you have grounds to do so.

Name of parent/carers	
Contact telephone no	
Signature	
Date	
Full name of child	
Date of birth	
Address of child	
Current school & year group	

Please indicate preference: 1<sup>st</sup>, 2<sup>nd</sup> or 3<sup>rd</sup>:

**PLEASE REMEMBER TO UPDATE OAT OF ANY CHANGES TO YOUR CONTACT DETAILS.**

### **Reasons for Preference/Grounds for Appeal**

**Please submit any supporting evidence with this appeal letter.**

This appeal is expected to be heard in the context of Infant Class Size.

Please indicate which circumstance you believe applies to your case.

A	The admission arrangements were not lawful
B	The admission arrangements were not correctly applied and if they had been my child would have been offered a place.
C	The decision not to offer my child a place was unreasonable (in a legal sense).

Please continue on a separate sheet, if necessary, and attach

### **Allocation Statement for Oasis Academy New Oak - September 2017**

As Oasis Academy New Oak was oversubscribed, the criteria stated in 'A guide for parents and carers on applying for a primary school place for the school year 2017 – 2018' have been applied to allocate the places that are available at the Academy.

**92** on-time applications (*36 x 1<sup>st</sup> preferences, 32 x 2<sup>nd</sup> preferences, 24 x 3<sup>rd</sup> preferences*) have been received for Oasis Academy New Oak, which has an Admission Number of 30.

#### **How the Initial Allocation of Places was made**

The 30 places have been offered to the following children:

1. Children in the care of the Local Authority or who were previously in Care but immediately after being in Care became subject to an adoption order, child arrangement order or special guardianship order. (**3** places)
2. Those children with siblings already at Oasis Academy New Oak and who will still be there in September 2017. (**12** places)
3. Those children living closest to Oasis Academy New Oak as measured in a direct line from the home address to the school. (**15** places)  
The furthest distance offered a place in this category was **0.442.83 km**.

#### **CLASS SIZE PREJUDICE APPEALS - Effects of Infant Class Size Legislation.**

Appeals for Oasis Academy New Oak will be heard on the basis of Class Size Prejudice as the Academy will have one Reception class containing 30 pupils.

Guidance on Class Size Prejudice Appeals is available on the School Admissions website.

You should be aware that since the introduction of Infant Class Size Legislation in 2000, no appeals have been upheld in the parents' favour for this Academy.



**Our Lady of the Rosary School**

**Reception Class 2017**

**Statement of Allocation of Places**

**69 on time applications received**

**37 Additional Information Forms received with supporting documentation**

**Places offered in the following order of priority as per the school's Admission Policy 2017/18**

**5.2 Baptised Catholic Children who will have a sibling in the school at the time of admission**

**9 places offered**

**5.3 Children who are baptised Catholics and who live in the parishes of Our Lady of the Rosary in Lawrence Weston, St Antony's in Henbury and Sacred Heart in Westbury on Trym**

**17 places offered**

**5.4 Baptised Catholic children who live outside the parishes mentioned in 5.3 above, who will have a sibling in the school at the time of admission.**

**3 places offered**

**5.5 Baptised Catholic children who live outside the parishes mentioned in 5.3 above.**

**1 place offered**

**Total of 30 places offered**



Return to Our Lady of the Rosary Primary School, Tide Grove, Lawrence Weston,  
Bristol BS11 0PA

### **LETTER OF APPEAL - CLASS SIZE PREJUDICE APPEAL**

**Full Name of Child:** \_\_\_\_\_

**Date of Birth:** \_\_\_\_\_

I wish to appeal for a place at \_\_\_\_\_ School

\_\_\_\_\_ Name of Parent/Carer

\_\_\_\_\_ Signature of Parent/Carer

\_\_\_\_\_ Date

(Please submit a separate letter for each school)

### **Grounds for Appeal**

You must read the enclosed information on the effects of Infant Class Size legislation.

Please indicate which of the restricted circumstances you believe applies to your case.

- |   | Tick                     |
|---|--------------------------|
| (a) that your child <u>would have been offered a place</u> if the admission arrangements had been properly implemented.   | <input type="checkbox"/> |
| (b) the child would have been offered a place if the arrangements had not been contrary to mandatory provisions in the School Admissions Code and the School Standards and Framework Act 1998 | <input type="checkbox"/> |
| (c) that the decision was not one which a reasonable admission authority would make in the circumstances of the case.   | <input type="checkbox"/> |

Please give reasons for your appeal either overleaf or on a separate sheet

## **Allocation Statement for Redfield Educate Together Primary Academy – Admission to Reception year group September 2017/18**

Redfield Educate Together Primary Academy is run independently from the Local Authority (LA) and is funded directly by the Department for Education (DfE) for a set number of places in each year group. This is called the Published Admission Number or PAN. The PAN for Reception 2017/18 entry is 60. Exceeding more than 60 places would place enormous constraints on the existing school site. Quality of education and health and safety issues are the main concern for pupils and staff.

Redfield Educate Together Primary Academy is part of the Coordinated Admissions Scheme within Bristol City Council (BCC).

Redfield Educate Together Primary Academy received 156 on-time applications. So with only 60 places available we could not offer a place to every applicant who applied. The oversubscription criteria used to offer places is set out in academies admission policy available on the Academy website.

The **60** places have been offered to the following children:

1. Highest priority was given to those children who are defined as 'Children in Care'; or children who were previously in care, but immediately after being in care became subject to an adoption, child arrangements, or special guardianship order. (2 places).
2. Those children with siblings already at Redfield Educate Together Primary Academy who will still be on roll in September 2017. (18 places)
3. Those children living closest to Redfield Educate Together Primary Academy as measured in a direct line from the home address to the school (40 places)

The furthest distance offered a place in this category was **0.698 Km**.

### The operation of waiting list for unsuccessful applicants:

Redfield Educate Together Primary Academy is its own admission authority and maintains its own waiting list. Applications can request a place on this waiting list by contacting the Academy directly. Email [info@redfieldet.org.uk](mailto:info@redfieldet.org.uk) or call 01173790777

### CLASS SIZE PREJUDICE APPEALS - Effects of Infant Class Size Legislation.

Appeals for Redfield Educate Together Primary Academy will be heard on the basis of Class Size Prejudice. The school has two Reception classes each containing 30 children.

Guidance on Class Size Prejudice Appeals is available on the School Admissions website.

You should be aware that since the introduction of Infant Class Size Legislation in 2000, no appeals have been upheld in the parents' favour for this school.



**Redfield Educate Together Primary Academy - APPEAL PRO FORMA  
RECEPTION 2017/2018**

**THIS FORM MUST BE COMPLETED AND RETURNED TO: Redfield Educate Together Primary Academy, Avonvale Road, Bristol BS5 9RB by 15<sup>th</sup> MAY 2017.**

**I wish to appeal against the decision to refuse my child a place at Redfield Educate Together Primary Academy**

**Name of Child:**

**Date of Birth (child):**

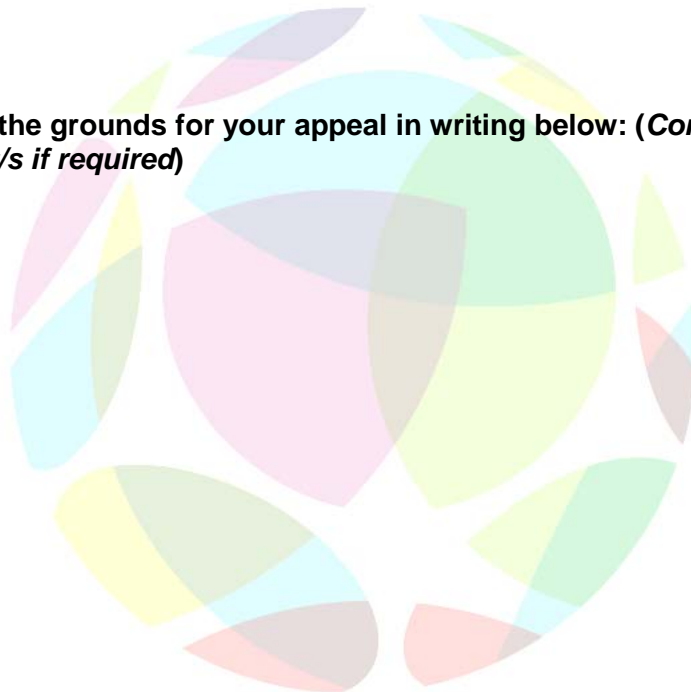
**Address of Child:**

**Name of Parent/Carer:**

**Daytime telephone number:**

**Email address:**

**Please set out the grounds for your appeal in writing below: (*Continue on a separate sheet/s if required*)**



**Signature of Parent/Carer:**

**Dated:**

**RECEPTION ADMISSIONS - SEPTEMBER 2017**

**INITIAL ALLOCATION STATEMENT FOR SALTORD C of E PRIMARY SCHOOL**

**PLACES AVAILABLE: 60**

As Saltford C of E Primary School was oversubscribed it was necessary to use Bath & North East Somerset's admissions criteria, as published in 'A Primary School for Your Child – 2017/18', to allocate the places available at the school. Applications for all schools are considered under an equal preference system which means that all preferences (1<sup>st</sup>, 2<sup>nd</sup> & 3<sup>rd</sup>) for each school are considered equally. If there are any cases where more than one of the school preferences named on the application form could have been met only the highest preference school has been allocated.

A total of **104 preferences** were originally received for Saltford C of E Primary School which has an Admission Number of **60**.

If, under any of the categories listed, places were offered and refused, priority was given to those who live closest to the school as measured in a direct line between the home address and the school.

**How the initial allocation of places was made for this particular school:**

**0 Category A Applicants** - Looked after children or previously looked after children

**20 Category B Applicants** - ie Children who will have a sibling in attendance on the admission date at the preferred school and they either

- live within a 1.5 mile radius\* of the school; or
- live outside a 1.5 mile radius\* of the school but their sibling was offered a place prior to September 2013; or
- live outside a 1.5 mile radius\* of the school but it is their closest Community or Voluntary Controlled School

\*The 1.5 mile radius is measured from the address point of the school as defined by the Local Land & Property Gazetteer (LLPG)

**40 Category C Applicants** - Children who live closest to the school as measured in a direct line. **The furthest direct line distance between the preferred school and the home address offered in this category was 3.610 miles.**

**1 child in total has initially been refused a place at Saltford C of E Primary School.** (All other preferences originally considered have qualified for another school as a higher preference)

**CLASS SIZE PREJUDICE APPEALS – Effects of Infant Class Size Legislation:**

Appeals for Saltford C of E Primary School will be heard on the basis of Infant Class Size Prejudice as the school will organise with two Reception classes each containing 30 pupils with one full-time qualified teacher (or the equivalent of) in each class.

**Please see the enclosed statement of options for more information about Infant Class size appeals and the waiting list option.**

Please Note: If you decide to lodge a formal appeal for a place at this particular school your initial notification of intent to appeal should be sent to your home local authority by 2 May 2017 and your letter of appeal for Saltford C of E Primary School should be sent by no later than 16 May 2017 to the Postal Address at: Admissions & Transport, People & Communities Department, Lewis House, Manvers Street, Bath, BA1 1JG

Date of Statement 18 April 2017

(Please Continue Overleaf if needed)
Reasons for Preference/Grounds for Appeal (continued)



# SCHOOL OF CHRIST THE KING



Hartcliffe Road, Filwood Park, Knowle  
Bristol, BS4 1HD  
Telephone: 01179664844  
E-Mail: [Christ.the.king.p@bristol-schools.uk](mailto:Christ.the.king.p@bristol-schools.uk)  
Website: [www.ctk.education](http://www.ctk.education)

## Allocation Statement for School of Christ the King Catholic Primary September 2017

As School of Christ the King Catholic Primary School was oversubscribed, the published admissions criteria have been applied to allocate places that are available at the school. 58 applications have been received for School of Christ the King Primary School which has an admission number of 30.

### How the Initial Allocation of places was made.

#### Criteria list

- 6.1 Baptised Catholic Looked After and previously Looked After children
- 6.2 Baptised Catholic children who live in the parish of Christ the King Church **(5)**
- 6.3 Baptised Catholic children who live outside the parish of Christ the King Church
- 6.4 Looked After and previously Looked After children
- 6.5 Children of a baptised Catholic parent/carer who live within the parish of Christ the King Church
- 6.6 Children who will have a brother or sister at the school at the time of their admission **(23)**
- 6.7 Children of a baptised Catholic parent/carer who live outside the parish of Christ the King Church
- 6.8 Other children not in the above categories **(2)**

**The furthest distance offered a place in this category was 0.160 km.**

### **CLASS SIZE PREJUDICE APPEALS - Effects of Infant Class Size Legislation.**

Appeals for School of Christ the King Catholic Primary School will be heard on the basis of Class Size Prejudice as the school will have one Reception class containing 30 pupils.

Guidance on Class Size Prejudice Appeals is available on the School Admissions website.

You should be aware that since the introduction of Infant Class Size Legislation in 2000, no appeals have been upheld in the parents' favour for this school.

## **LETTER OF APPEAL – INFANT CLASS SIZE PREJUDICE**

### **Parent/Carer details – BLOCK CAPITALS**

Parent/Carer Name \_\_\_\_\_

Home Telephone Number \_\_\_\_\_

Mobile Telephone Number \_\_\_\_\_

Alternative Telephone Number \_\_\_\_\_

Email address \_\_\_\_\_

### **Child's details**

First Name(s): \_\_\_\_\_

Surname/Family Name: \_\_\_\_\_

Date of Birth: \_\_\_\_/\_\_\_\_/\_\_\_\_

Gender: m ☐ f ☐

Address:

\_\_\_\_\_  
\_\_\_\_\_  
\_\_\_\_\_

I wish to appeal for a place at \_\_\_\_\_ School

Signed (Parent/Carer): \_\_\_\_\_ Date: \_\_\_\_/\_\_\_\_/\_\_\_\_

### **Grounds for Appeal**

It is important that you read the enclosed information on the effects of Infant Class Size legislation. Please provide your grounds of appeal in writing, providing evidence to support your case.

**An appeal hearing cannot be set up unless until your grounds of appeal are received in writing.**

1. My child would have been offered a place if the admission arrangements had been properly implemented.

*Please provide written evidence to support the above statement.*

2. My child would have been offered a place if the admission arrangements had not been contrary to mandatory provisions in the School Admissions Code and the School Standards and Framework Act 1998.

***Please provide written evidence to support the above statement.***

3. The decision was not one which a reasonable Admission Authority would make in the circumstances of the case.

***Please provide written evidence to support the above statement and refer to definition of 'reasonable' in Guidance Notes provided.***

**Please return to School of Christ the King Catholic Primary School, Hartcliffe Road,  
Filwood Park, Bristol, BS4 1HD by 23<sup>rd</sup> May 2017.**



### **Allocation Statement for Sea Mills Primary School - September 2017**

As Sea Mills Primary School was oversubscribed, the criteria stated in the booklet '*A Guide for parents and carers on applying for a primary school place for the school year 2017-2018*' have been applied to allocate the places that are available at the school.

**65** on-time applications (*31 x 1<sup>st</sup> preferences, 19 x 2<sup>nd</sup> preferences, 15 x 3<sup>rd</sup> preferences*) have been received for Sea Mills Primary School, which has an Admission Number of **30**.

#### **How the Initial Allocation of Places was made**

The **30** places have been offered to the following children:

1. Those children who are defined as 'Children in Care'; or children who were previously in care, but immediately after being in care became subject to an adoption, child arrangements, or special guardianship order. (**1** place).
2. Those children with siblings already at Sea Mills Primary School who will still be on roll in September 2017. (**14** places)
3. Those children living closest to Sea Mills Primary School as measured in a direct line from the home address to the school (**15** places)

The furthest distance offered a place in this category was **2.02km**.

#### **CLASS SIZE PREJUDICE APPEALS - Effects of Infant Class Size Legislation.**

Appeals for Sea Mills Primary School will be heard on the basis of Class Size Prejudice. The school has 1 Reception class containing 30 children.

Guidance on Class Size Prejudice Appeals is available on the School Admissions website.

**You should be aware that since the introduction of Infant Class Size Legislation in 2000, no appeals have been upheld in the parents' favour for this school.**





### **Allocation Statement for Sefton Park Infant School - September 2017**

As Sefton Park Infant School was oversubscribed, the criteria stated in the booklet '*A Guide for parents and carers on applying for a primary school place for the school year 2017-2018*' have been applied to allocate the places that are available at the school.

**187** on-time applications (*61 x 1<sup>st</sup> preferences, 65 x 2<sup>nd</sup> preferences, 61 x 3<sup>rd</sup> preferences*) have been received for Sefton Park Infant School, which has an Admission Number of **60**.

#### **How the Initial Allocation of Places was made**

The **60** places have been offered to the following children:

1. Those children who are defined as 'Children in Care'; or children who were previously in care, but immediately after being in care became subject to an adoption, child arrangements, or special guardianship order. (**0** places).
2. Those children with siblings already at Sefton Park Infant/Junior School who will still be on roll in September 2017. (**22** places)
3. Those children living closest to Sefton Park Infant School as measured in a direct line from the home address to the school (**38** places)

The furthest distance offered a place in this category was **1.014 km**.

#### **CLASS SIZE PREJUDICE APPEALS - Effects of Infant Class Size Legislation.**

Appeals for Sefton Park Infant School will be heard on the basis of Class Size Prejudice. The school has two Reception classes each containing 30 children.

Guidance on Class Size Prejudice Appeals is available on the School Admissions website.

**You should be aware that since the introduction of Infant Class Size Legislation in 2000, no appeals have been upheld in the parents' favour for this school.**



## **ADMISSION TO INFANT/PRIMARY SCHOOL**

### **INITIAL ALLOCATION STATEMENT FOR ON-TIME APPLICATIONS**

#### **SHIELD ROAD PRIMARY SCHOOL - SEPTEMBER 2017**

As Shield Road Primary School was over-subscribed, it was necessary to use South Gloucestershire Council's admission criteria, as published in '*Admission to Primary Schools in South Gloucestershire September 2017 – August 2018*', to allocate the places available at the school.

81 applications were received by the 15 January 2017 for Shield Road Primary School which has an admission number of 30.

#### **How the initial allocation of places was made:**

9 Local Siblings (within the Area of Prime Responsibility (APR)).

14 Children living within the APR.

7 Children who live closest to the school: The furthest distance offered a place under this criterion was 0.643 mile.

A total of 4 refusals have been made. Please note that some applications may have been either withdrawn by the parents/carers, or discounted where a higher preference of school has been offered.

Distances from home to school are measured in a direct line between the address point of the child's home and a central point within the main school buildings using the Local Authority's computerised mapping system.

#### **Can I remain on a waiting list for my preferred school(s)?**

Yes. The waiting lists will be maintained until the end of Term 2 (December).

#### **CLASS SIZE PREJUDICE APPEALS – Effects of Infant Class Size Legislation:**

Appeals for Shield Road Primary School will be heard on the basis of Infant Class Size Prejudice as the school will organise with one Reception class containing 30 pupils with one full-time qualified teacher (or the equivalent of) in each class.

**Please see enclosed leaflet for more information.**



### **Allocation Statement for Southville Primary School - September 2017**

As Southville Primary School was oversubscribed, the criteria stated in the booklet '*A Guide for parents and carers on applying for a primary school place for the school year 2017-2018*' have been applied to allocate the places that are available at the school.

**244** on-time applications (*97 x 1<sup>st</sup> preferences, 102 x 2<sup>nd</sup> preferences, 45 x 3<sup>d</sup> preferences*) have been received for Southville Primary School, which has an Admission Number of 90.

#### **How the Initial Allocation of Places was made**

The **90** places have been offered to the following children:

1. Those children who are defined as 'Children in Care'; or children who were previously in care, but immediately after being in care became subject to an adoption order, child arrangement order, or special guardianship order. (**0** places)
2. Those children with siblings already at Southville Primary School who will still be on roll in September 2017. (**28** places)
3. Those children living closest to Southville Primary School as measured in a direct line from the home address to the school (**62** places) Southville Primary School is on a split site, the home to school distance is measured from a point equidistant between the two sites.

The furthest distance offered a place in this category was **0.762 km**.

#### **CLASS SIZE PREJUDICE APPEALS - Effects of Infant Class Size Legislation.**

Appeals for Southville Primary School will be heard on the basis of Class Size Prejudice. The school has three Reception classes each containing 30 children.

Guidance on Class Size Prejudice Appeals is available on the School Admissions website.

**You should be aware that since the introduction of Infant Class Size Legislation in 2000, no appeals have been upheld in the parents' favour for this school.**

Headteacher:  
Mrs C Burns



Tel: 0117 9030070

Aberdeen Road, Redland, Bristol, BS6 6HY  
E mail: st.peter.paul.p@bristol-schools.uk  
Website: www.sspeterandpaulprimary.co.uk

## **ADMISSIONS FOR RECEPTION CLASS SEPTEMBER 2017**

Further to a meeting of the Admissions Panel our 30 places for Reception Class were allocated in accordance with our admissions criteria and Policy as published in the school prospectus and on the school website.

The Admissions Governors received a total of 78 Applications which were all considered in accordance with the school's 2016 Admission Policy

30 Places were offered under the following categories

Category 4.1:	0
Category 4.2:	15
Category 4.3:	8
Category 4.4:	0
Category 4.5:	2
Category 4.6:	3
Category 4.7:	0
Category 4.8:	2





### **Allocation Statement for St Anne's Infants' School - September 2017**

As St Anne's Infants' School was oversubscribed, the criteria stated in the booklet '*A Guide for parents and carers on applying for a primary school place for the school year 2017-2018*' have been applied to allocate the places that are available at the school.

**201** on-time applications (*99 x 1<sup>st</sup> preferences, 57 x 2<sup>nd</sup> preferences, 45 x 3<sup>rd</sup> preferences*) have been received for St Anne's Infants' School, which has an Admission Number of 90.

#### **How the Initial Allocation of Places was made**

The **90** places have been offered to the following children:

1. Those children who are defined as 'Children in Care'; or children who were previously in care, but immediately after being in care became subject to an adoption order, child arrangement order, or special guardianship order. (**2** places).
2. Those children with siblings already at St Anne's Infants' School/Wicklea Academy who will still be on roll in September 2017. (**32** places)
3. Those children living closest to St Anne's Infants' School as measured in a direct line from the home address to the school (**56** places)

The furthest distance offered a place in this category was **0.887 km**.

#### **CLASS SIZE PREJUDICE APPEALS - Effects of Infant Class Size Legislation.**

Appeals for St Anne's Infants' School will be heard on the basis of Class Size Prejudice. The school has three Reception classes each containing 30 children.

Guidance on Class Size Prejudice Appeals is available on the School Admissions website.

**You should be aware that since the introduction of Infant Class Size Legislation in 2000, no appeals have been upheld in the parents' favour for this school.**



### **Allocation Statement for St Barnabas Church of England Primary School - September 2017**

As St Barnabas C of E Primary School was oversubscribed, the criteria stated in the booklet '*A Guide for parents and carers on applying for a primary school place for the school year 2017-2018*' have been applied to allocate the places that are available at the school.

**69** on-time applications (*31 x 1<sup>st</sup> preferences, 26 x 2<sup>nd</sup> preferences, 12 x 3<sup>rd</sup> preferences*) have been received for St Barnabas C of E Primary School, which has an Admission Number of **30**.

#### **How the Initial Allocation of Places was made:**

The **30** places have been offered to the following children:

1. Those children who are defined as 'Children in Care'; or children who were previously in care, but immediately after being in care became subject to an adoption, child arrangements, or special guardianship order. (**0** places).
2. Those children with siblings already at St Barnabas C of E Primary School who will still be on roll in September 2017. (**16** places)
3. Those children living closest to St Barnabas C of E Primary School as measured in a direct line from the home address to the school. (**14** places)

The furthest distance offered a place in this category was **0.541 km**.

#### **CLASS SIZE PREJUDICE APPEALS - Effects of Infant Class Size Legislation.**

Appeals for St Barnabas C of E Primary School will be heard on the basis of Class Size Prejudice. The school has one Reception class containing 30 children.

Guidance on Class Size Prejudice Appeals is available on the School Admissions website.

**You should be aware that since the introduction of Infant Class Size Legislation in 2000, no appeals have been upheld in the parents' favour for this school.**

Allocated by LA

*St Bernadette Catholic Primary School*

Headteacher: Mrs B P Lee

Tel: 01173772373

Fax: 01173772379

E-Mail [stbernadettep@bristol-schools.uk](mailto:stbernadettep@bristol-schools.uk)

<http://www.st-bernadette-pri.bristol.sch.uk>



Gladstone Road  
Hengrove  
Bristol  
BS14 9LP

*'Living and Learning through Christ'*

### **Allocation Statement for St Bernadette Catholic Primary School – September 2017**

The Governing Body met on 22 February 2017 at 9:30.

As St Bernadette Catholic Primary School was oversubscribed, the published admissions criteria in the 2017/18 admissions policy have been applied to allocate the places that are available at the school.

The list received from LA showed 85 applications, 5 applications were withdrawn. The governors considered 80 and allocated 30 since St Bernadette Primary School has an admission number of 30.

How the initial allocation of places was made:

- 6.1 Baptised Catholic Looked After Children at the time of application and baptised Catholic children who were previously Looked After, but ceased to be so because they were adopted (or became subject to a child arrangements order or a special guardianship order) immediately following having been Looked After. (0)
- 6.2 Baptised Catholic children who will have a brother or sister (as defined below) attending St Bernadette School at the time of admission and who reside within the parishes of St. Bernadette, Whitchurch, St. Gerard Majella, Knowle or Sacred Heart, Chew Magna. (8)
- 6.3 Baptised Catholic children living within the parishes of St. Bernadette, Whitchurch, St. Gerard Majella, Knowle or Sacred Heart, Chew Magna. (8)
- 6.4 Baptised Catholic children who will have a brother or sister (as defined below) attending St Bernadette School at the time of admission and who live outside the parishes of St. Bernadette, Whitchurch, St. Gerard Majella, Knowle or Sacred Heart, Chew Magna. (0)
- 6.5 Baptised Catholic children who live outside the parishes of St. Bernadette, Whitchurch, St. Gerard Majella, Knowle or Sacred Heart, Chew Magna. (2)
- 6.6 Looked After Children at the time of application and children who were previously Looked After, but ceased to be so because they were adopted (or became subject to a child arrangements order or a special guardianship order) immediately following having been Looked After. (0)
- 6.7 Children who will have a brother or sister (as defined below) attending St Bernadette School at the time of their admission. (5)



Please recycle me

Allocated by LA

6.8 Other children not in the above categories. (7)

**In Categories 6.1, 6.2, 6.3 6.4 6.5, a copy of a valid baptismal certificate must be sent to the school, who may also request sight of the original. Where a certificate is not available, a statement from a member of the clergy, confirming that the child has (or in their opinion has) been baptised or received into the Catholic Church must be provided.**

Category 6.8 was oversubscribed. The drawing of lots was used to allocate places for this criterion, overseen by an independent observer, as stated in our Admissions Policy 2017/18.

### **Infant Class Size Appeals**

Statutory limits on class sizes mean that infant classes with a single qualified teacher cannot contain more than 30 pupils without taking 'qualifying measures' to comply with the statutory duty to limit infant classes with a single teacher to a maximum of 30. Qualifying measures include those such as

- employing an additional teacher
- building an extra classroom
- reorganisation of classes

The infant classes at St Bernadette Catholic Primary School are organised with a maximum of 30 in each year group, so appeals for the infant classes will be heard on the basis of 'class size prejudice'.

The Independent Appeals Panel is restricted to three circumstances in which they can uphold your case. These are if the panel is satisfied:

- (a) that your child would have been offered a place if the admission arrangements had been properly implemented.
- (b) the child would have been offered a place if the arrangements had not been contrary to mandatory provisions in the School Admissions Code and the School Standards and Framework Act 1998
- (c) that the decision was not one which a \*reasonable admission authority would make in the circumstances of the case.

'Reasonable' is defined as

"In order for a panel to determine that an admission authority's decision to refuse admission was unreasonable, it will need to be satisfied that the decision to refuse to admit that particular child was 'perverse in the light of the admission arrangements', i.e. it was 'beyond the range of responses open to a reasonable decision maker' or 'a decision which is so outrageous in its defiance of logic or of accepted moral standards that no sensible person who had applied his mind to the question could have arrived at it'.



Please recycle me



## **LETTER OF APPEAL – INFANT CLASS SIZE PREJUDICE**

### **Parent/Carer details – BLOCK CAPITALS**

Parent/Carer Name \_\_\_\_\_

Home Telephone Number \_\_\_\_\_

Mobile Telephone Number \_\_\_\_\_

Alternative Telephone Number \_\_\_\_\_

Email address \_\_\_\_\_

### **Child's details**

First Name(s): \_\_\_\_\_

Surname/Family Name: \_\_\_\_\_

Date of Birth: \_\_\_\_/\_\_\_\_/\_\_\_\_

Gender: m ☐ f ☐

Address:

\_\_\_\_\_  
\_\_\_\_\_  
\_\_\_\_\_

I wish to appeal for a place at \_\_\_\_\_ School

Signed (Parent/Carer): \_\_\_\_\_ Date: \_\_\_\_/\_\_\_\_/\_\_\_\_

### **Grounds for Appeal**

It is important that you read the enclosed information on the effects of Infant Class Size legislation. Please provide your grounds of appeal in writing, providing evidence to support your case.

**An appeal hearing cannot be set up unless until your grounds of appeal are received in writing.**

1. My child would have been offered a place if the admission arrangements had been properly implemented.

*Please provide written evidence to support the above statement.*

2. My child would have been offered a place if the admission arrangements had not been contrary to mandatory provisions in the School Admissions Code and the School Standards and Framework Act 1998.

***Please provide written evidence to support the above statement.***

3. The decision was not one which a reasonable Admission Authority would make in the circumstances of the case.

***Please provide written evidence to support the above statement and refer to definition of 'reasonable' in Guidance Notes provided.***

**Please return to St Bernadette Catholic Primary School, Gladstone Road,  
Hengrove, Bristol BS14 9LP by 23<sup>rd</sup> May 2017.**

*Following the footsteps of Jesus,  
we celebrate and learn together*

## **Allocation Statement for St Bernard's Catholic Primary School – September 2017**

As St Bernard's Catholic Primary School was oversubscribed, the criteria stated in the booklet 'Your Child's Primary Education in Bristol' has been applied to allocate the places that are available at the school.

73 on time applications were received by Bristol City Council and of this supportive documentation was received in school by 27 applicants as requested in St Bernard's Catholic Primary School Admissions Policy in order that the criteria could be applied. Two applications had been withdrawn before the Admissions Committee Meeting reducing the applications to 71.

St Bernard's Catholic Primary School has an Admission Number of 30.

The Admissions Committee met and categorised the applications as follows:

<b>Category 8(ii)</b>	Baptised Catholics living in the parish of St Bernard's who will have a sibling at the school at the time of their admission- <b>6 applications</b>
<b>Category 8 (iii)</b>	Baptised Catholics living in the parish of St Bernard's – <b>5 applications</b>
<b>Category 8(iv)</b>	Baptised Catholic children living outside the parish of St Bernard's who will have a sibling at the school at the time of their admission – <b>1 application</b>
<b>Category 8(v)</b>	Baptised Catholic children living outside the Parish of St Bernard's – <b>9 applications</b>
<b>Category 8(vi)</b>	Children who are Looked After or were previously Looked After but ceased to be so because they were adopted (or became subject to a child arrangements order or special guardianship order) immediately following having been Looked After. – <b>2 applications</b>
<b>Category 8(vii)</b>	Children who will have a sibling at the school at the time of their admission - <b>7 applications</b>
<b>Category 8(viii)</b>	Other children not in the above categories – <b>41 applications</b>

## **How the Initial Allocation of Places was made:**

The 30 places have been offered to the following children:

Category 8(ii)	6 applications which were numbered 1-6.
Category 8(iii)	5 applications which were numbered 7- 11.
Category 8(iv)	1 application which was numbered 12
Category 8(v)	9 applications which were numbered 13 – 21
Category 8(vi)	2 applications which were numbered 22-23
Category 8(vii)	7 applications which were numbered 24-30
Category 8(viii)	41 applications which were numbered 31-71

To allocate the remaining applications the Admissions Committee were joined by Mrs Ann Davies, as an independent witness of the draw.

41 applications were allocated to category 8(viii) which were numbered 41-71 and 41 pieces of paper were numbered 41-71 and placed in a feely box which means that the pieces of paper were not visible from the outside and the pieces of paper were picked out and drawn in the following order:

Application 24	1 <sup>st</sup>	numbered 31
Application 69	2 <sup>nd</sup>	numbered 32
Application 39	3 <sup>rd</sup>	numbered 33
Application 73	4 <sup>th</sup>	numbered 34
Application 16	5 <sup>th</sup>	numbered 35
Application 21	6 <sup>th</sup>	numbered 36
Application 51	7 <sup>th</sup>	numbered 37
Application 41	8 <sup>th</sup>	numbered 38
Application 70	9 <sup>th</sup>	numbered 39
Application 56	10 <sup>th</sup>	numbered 40
Application 67	11 <sup>th</sup>	numbered 41
Application 6	12 <sup>th</sup>	numbered 42
Application 9	13 <sup>th</sup>	numbered 43
Application 66	14 <sup>th</sup>	numbered 44
Application 61	15 <sup>th</sup>	numbered 45
Application 44	16 <sup>th</sup>	numbered 46
Application 40	17 <sup>th</sup>	numbered 47
Application 13	18 <sup>th</sup>	numbered 48
Application 18	19 <sup>th</sup>	numbered 49
Application 38	20 <sup>th</sup>	numbered 50
Application 22	21 <sup>st</sup>	numbered 51
Application 72	22 <sup>nd</sup>	numbered 52
Application 25	23 <sup>rd</sup>	numbered 53
Application 17	24 <sup>th</sup>	numbered 54
Application 19	25 <sup>th</sup>	numbered 55
Application 46	26 <sup>th</sup>	numbered 56
Application 60	27 <sup>th</sup>	numbered 57
Application 10	28 <sup>th</sup>	numbered 58
Application 2	29 <sup>th</sup>	numbered 59
Application 53	30 <sup>th</sup>	numbered 60
Application 49	31 <sup>st</sup>	numbered 61
Application 32	32 <sup>nd</sup>	numbered 62
Application 71	33 <sup>rd</sup>	numbered 63
Application 30	34 <sup>th</sup>	numbered 64
Application 63	35 <sup>th</sup>	numbered 65
Application 23	36 <sup>th</sup>	numbered 66
Application 35	37 <sup>th</sup>	numbered 67
Application 47	38 <sup>th</sup>	numbered 68
Application 11	39 <sup>th</sup>	numbered 69
Application 33	40 <sup>th</sup>	numbered 70
Application 48	41 <sup>st</sup>	numbered 71



# ST. BERNARD'S CATHOLIC SCHOOL

Station Road, Shirehampton, Bristol BS11 9TU

Tel/Fax 0117 903 0352

E-mail: [school@stbernardsprimary.co.uk](mailto:school@stbernardsprimary.co.uk)



Headteacher: Mrs Meg Wilson

**Please return direct to School – St Bernard's Catholic Primary School**

## **LETTER OF APPEAL – CLASS SIZE PREJUDICE APPEAL**

**Full Name of Child:** \_\_\_\_\_

**Date of Birth:** \_\_\_\_\_

I wish to appeal for a place at \_\_\_\_\_ School

\_\_\_\_\_ Name of Parent/Carer

\_\_\_\_\_ Signature of Parent/Carer

\_\_\_\_\_ Date

(Please submit a separate letter for each school)

### **Grounds for Appeal**

You must read the enclosed information on the effects of Infant Class Size regulation.

Please indicate which of the restricted circumstances you believe applies to your case.

Tick

- |     |   |                          |
|-----|---|--------------------------|
| (a) | that your child <u>would have been offered a place</u> if the admission arrangements had been properly implemented.   | <input type="checkbox"/> |
| (b) | the child would have been offered a place if the arrangements had not been contrary to mandatory provisions in the School Admissions Code and the School Standards and Framework Act 1998 | <input type="checkbox"/> |
| (c) | that the decision was not one which a reasonable admission authority would make in the circumstances of the case.   | <input type="checkbox"/> |

Please give reasons for your appeal either overleaf or on a separate sheet.



### **Allocation Statement for St John's CE Primary School - September 2017**

As St John's CE Primary School was oversubscribed, the criteria stated in the booklet '*A Guide for parents and carers on applying for a primary school place for the school year 2017-2018*' have been applied to allocate the places that are available at the school.

**184** on-time applications (*74 x 1<sup>st</sup> preferences, 58 x 2<sup>nd</sup> preferences, 52 x 3<sup>rd</sup> preferences*) have been received for St John's CE Primary School, which has an Admission Number of **75**.

#### **How the Initial Allocation of Places was made**

The **75** places have been offered to the following children:

1. Those children who are defined as 'Children in Care'; or children who were previously in care, but immediately after being in care became subject to an adoption, child arrangements, or special guardianship order. (**1** places).
2. Those children with siblings already at St John's CE Primary School who will still be on roll in September 2017. (**30** places)
3. Those children living closest to St John's CE Primary School as measured in a direct line from the home address to a midpoint between the schools upper and lower school sites (**44** places)

The furthest distance offered a place in this category was **1.23km**.

#### **CLASS SIZE PREJUDICE APPEALS - Effects of Infant Class Size Legislation.**

Appeals for St John's CE Primary School will be heard on the basis of Infant Class Size Prejudice. The school has 3 Reception classes each containing 25 children. When these year groups move through to Year 1 and 2 they will become mixed year groups with 30 children in each class.

Guidance on Class Size Prejudice Appeals is available on the School Admissions website.

**You should be aware that since the introduction of Infant Class Size Legislation in 2000, no appeals have been upheld in the parents' favour for this school.**

**RECEPTION ADMISSIONS - SEPTEMBER 2017**

**INITIAL ALLOCATION STATEMENT FOR ST. JOHN'S C OF E PRIMARY (KEYNSHAM)  
SCHOOL**

**PLACES AVAILABLE: 30**

As St. John's C of E Primary (Keynsham) School was oversubscribed it was necessary to use to use the Academy Trust's admissions criteria, as published in 'A Primary School for Your Child – 2017/18', to allocate the places available at the school. Applications for all schools are considered under an equal preference system which means that all preferences (1<sup>st</sup>, 2<sup>nd</sup> & 3<sup>rd</sup>) for each school are considered equally. If there are any cases where more than one of the school preferences named on the application form could have been met only the highest preference school has been allocated.

A total of **129 preferences** were originally received for St. John's C of E Primary (Keynsham) School which has an Admission Number of **30**

If, under any of the categories listed, places were offered and refused, priority was given to those who live closest to the school as measured in a direct line between the home address and the school.

**How the initial allocation of places was made for this particular school:**

**0 Category A Applicants** - Looked after children or previously looked after children

**20 Category B Applicants**- ie Children who will have a sibling in attendance on the admission date at the preferred school and they either

- live within a 1.5 mile radius\* of the school; or
- live outside a 1.5 mile radius\* of the school but their sibling was offered a place prior to September 2013; or
- live outside a 1.5 mile radius\* of the school but it is their closest Community or Voluntary Controlled School

\*The 1.5 mile radius is measured from the address point of the school as defined by the Local Land & Property Gazetteer (LLPG)

**0 Category C Applicants** – Children of staff where that member of staff has been employed for two or more years. (See booklet for full definition.)

**10 Category D Applicants** – Children who live closest to the school as measured in a direct line.

**The furthest direct line distance between the preferred school and the home address offered in this category was 0.343 miles.**

**23 children in total have initially been refused a place at St. John's C of E Primary (Keynsham) School.** (All other preferences originally considered have qualified for another school as a higher preference)

**CLASS SIZE PREJUDICE APPEALS – Effects of Infant Class Size Legislation:**

Appeals for St. John's C of E Primary (Keynsham) School will be heard on the basis of Infant Class Size Prejudice as the school will organise with one Reception class containing 30 pupils with one full-time qualified teacher (or the equivalent of).

**Please see the enclosed statement of options for more information about Infant Class size appeals and the waiting list option.**

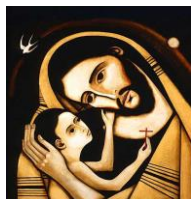
Please Note If you decide to lodge a formal appeal for a place at this particular school your initial notification of intent to appeal should be sent to your home local authority by 2 May 2017 and your letter of appeal for St. John's C of E Primary (Keynsham) School should be sent by no later than 16 May 2017 to the Postal Address at: Admissions & Transport, People & Communities Department, Lewis House, Manvers Street, Bath, BA1 1JG

Date of Statement 18 April 2017





[illegible]



# St Joseph's Catholic Primary School

Chatsworth Road, Fishponds, Bristol, BS16 3QR

Tel. 0117 3772160

e-mail: [st.josephs.p@bristol-schools.uk](mailto:st.josephs.p@bristol-schools.uk)

Website: [www.st-josephs-pri.bristol.sch.uk](http://www.st-josephs-pri.bristol.sch.uk)

Head Teacher- Mrs J McCarthy



## Allocation Statement regarding St Joseph's Catholic Primary School September 2017

The school serves the parish of St Joseph's. The Parish of St Joseph's is defined by the parish boundaries. A map of the parish is available on the school's website.

## Why has my child not been offered a place at St Joseph's Catholic Primary School?

The admission number for the reception year of 2017 at St Joseph's is 30 pupils.

When more children apply than there are places available, the oversubscription criteria admissions procedure is applied. St Joseph's school received 94 applications for 30 places.

## Admissions Criteria & Waiting list information

As St Joseph's School was oversubscribed, the oversubscription criteria have been applied to allocate the places that are available to the school. From the 94 applications received 30 places were allocated as shown in the table below.

A waiting list of unsuccessful applicants will be held until 31st December 2017 and then discarded. The waiting list will be prioritised in accordance with the School's Admission Policy of 2017-2018.

Category	Category Description	Number of Children
1	Looked After children and Previously Looked After children, who are baptised in the Catholic Faith	0
2*	Children who are baptised into the Catholic Faith and reside in the parish of St Joseph	8
3*	Baptised Catholic children who live outside the parish of St Joseph	3
4	Looked After and Previously Looked After children	0
5**	Children who are not baptised at the time of application, living within the parish of St Joseph, but born with a Catholic parent/carer	3
6	Children who will have a sibling on the roll at St Joseph's school at the time of admission	6
7	Other children not in the categories above	10
<b>Total</b>		<b>30</b>

\*A copy of a valid Baptismal Certificate must be provided to the School for all baptised children

\*\* A copy of a valid Baptismal Certificate of the Catholic parent/carer must be provided to the School



Together in God's family we love, grow and learn



## Appeals Procedure for St Joseph's Primary School

Appeals for a place at St Joseph's Primary School will be held in accordance with the information given in the Admission Policy for 2017-18:

Parents have the right to appeal against the refusal of the Governing Body to admit their child. You will receive an appeal form with your allocated school place letter from your Admission Authority.

Your completed form should include:

- Your contact details
- the name, address and date of birth of your child
- the name of the preferred school
- the reasons for your preference
- the grounds for your appeal.

**The letter of appeal has to be sent to the Clerk to the Governors at St Joseph's School within 20 school days** of receiving the letter of refusal. Appeals will be arranged by the Clifton Diocesan Department for Schools and Colleges and conducted in accordance with the Code of Practice on School Appeals. The result of the appeal is binding on all parties.

### Key Points – If you decide to appeal

- Please consider carefully the strength of your case before deciding to proceed with an appeal.
- Decide on the reasons why St Joseph's Catholic Primary School is the **only** school to meet your child's needs.
- Prepare your case.
- Back up your reasons with strong evidence – stating your child's friend attends or that this is your local school is not considered as evidence.

An appeals panel can only uphold an appeal in these circumstances if

(a) The admissions arrangements were applied wrongly in your case OR

(b) It was unreasonable to turn your child down given circumstances.

The Law defines 'unreasonable' as being completely illogical, or not based on the facts of the case.



# St Joseph's Catholic Primary School

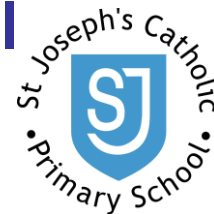
Chatsworth Road, Fishponds, Bristol, BS16 3QR

Tel. 0117 3772160

e-mail: [st.josephs.p@bristol-schools.uk](mailto:st.josephs.p@bristol-schools.uk)

Website: [www.st-josephs-pri.bristol.sch.uk](http://www.st-josephs-pri.bristol.sch.uk)

Head Teacher- Mrs J McCarthy



## RECEPTION CLASS ADMISSION APPEAL FORM

### ACADEMIC YEAR 2017-2018

This form should only be used to appeal for St Joseph's Catholic Primary School  
The completed form should be returned within 20 school days of the date on the refusal letter.

<b>Student's Full Name</b>	
<b>Date of Birth</b>	
<b>Address</b>	
<b>Post Code</b>	
<b>Contact Telephone No</b>	
<b>E-Mail address (please print)</b>	
<p><b>Grounds of appeal:</b> (Please clearly state your grounds of appeal, including reference to the Admission Policy and, in particular, the oversubscription criteria contained therein)</p>	

Please continue on a separate sheet if necessary. Number of sheets attached

I confirm that I wish to appeal against the refusal of a place for my child at St Joseph's Catholic Primary School, and that the information provided in this form is true and accurate, to the best of my knowledge:

Name of Parent/Carer	
Signature of Parent/Carer	
Date	

Please complete this form and return by **22nd May 2017** to:

The Clerk to Governors  
 St Joseph's Catholic Primary School  
 Chatsworth Road  
 Fishponds  
 Bristol  
 BS16 3QR

**RECEPTION ADMISSIONS - SEPTEMBER 2017**

**INITIAL ALLOCATION STATEMENT FOR ST KEYNA PRIMARY SCHOOL**

**PLACES AVAILABLE: 30**

As St Keyna Primary School was oversubscribed it was necessary to use Bath & North East Somerset's admissions criteria, as published in 'A Primary School for Your Child – 2017/18', to allocate the places available at the school. Applications for all schools are considered under an equal preference system which means that all preferences (1<sup>st</sup>, 2<sup>nd</sup> & 3<sup>rd</sup>) for each school are considered equally. If there are any cases where more than one of the school preferences named on the application form could have been met only the highest preference school has been allocated.

A total of **74 preferences** were originally received for St Keyna Primary School which has an Admission Number of **30**.

If, under any of the categories listed, places were offered and refused, priority was given to those who live closest to the school as measured in a direct line between the home address and the school.

**How the initial allocation of places was made for this particular school:**

**0 Category A Applicants** - Looked after children or previously looked after children

**14 Category B Applicants** - ie Children who will have a sibling in attendance on the admission date at the preferred school and they either

- live within a 1.5 mile radius\* of the school; or
- live outside a 1.5 mile radius\* of the school but their sibling was offered a place prior to September 2013; or
- live outside a 1.5 mile radius\* of the school but it is their closest Community or Voluntary Controlled School

\*The 1.5 mile radius is measured from the address point of the school as defined by the Local Land & Property Gazetteer (LLPG)

**16 Category C Applicants** - Children who live closest to the school as measured in a direct line. **The furthest direct line distance between the preferred school and the home address offered in this category was 0.471 miles.**

**15 children in total have initially been refused a place at St Keyna Primary School.** (All other preferences originally considered have qualified for another school as a higher preference)

**CLASS SIZE PREJUDICE APPEALS – Effects of Infant Class Size Legislation:**

Appeals for St Keyna Primary School will be heard on the basis of Infant Class Size Prejudice as the school will organise with one Reception class containing 30 pupils with one full-time qualified teacher (or the equivalent of).

**Please see the enclosed statement of options for more information about Infant Class size appeals and the waiting list option.**

Please Note: If you decide to lodge a formal appeal for a place at this particular school your initial notification of intent to appeal should be sent to your home local authority by 2 May 2017 and your letter of appeal for St Keyna Primary School should be sent by no later than 16 May 2017 to the Postal Address at: Admissions & Transport, People & Communities Department, Lewis House, Manvers Street, Bath, BA1 1JG

Date of Statement 18 April 2017



### **Allocation Statement for St Mary Redcliffe C of E VC Primary School - September 2017**

As St Mary Redcliffe C of E VC Primary School was oversubscribed, the criteria stated in 'A guide for parents and carers on applying for a primary school place for the school year 2017 – 2018' have been applied to allocate the places that are available at the school.

**161** on-time applications (*63 x 1<sup>st</sup> preferences, 60 x 2<sup>nd</sup> preferences, 38 x 3<sup>rd</sup> preferences*) have been received for St Mary Redcliffe C of E VC Primary School, which has an Admission Number of 60.

#### **How the Initial Allocation of Places was made**

The **60** places have been offered to the following children:

1. Children in the care of the Local Authority or who were previously in Care but immediately after being in Care became subject to an adoption order, child arrangement order or special guardianship order. (**0** places)
2. Those children with siblings already at St Mary Redcliffe C of E VC Primary School and who will still be there in September 2017. (**32** places)
3. Those children living closest to St Mary Redcliffe C of E VC Primary School as measured in a direct line from the home address to the school. (**28** places)  
The furthest distance offered a place in this category was **0.594 km**.

#### **CLASS SIZE PREJUDICE APPEALS - Effects of Infant Class Size Legislation.**

Appeals for St Mary Redcliffe C of E VC Primary School will be heard on the basis of Class Size Prejudice as the school will have two Reception classes each containing 30 pupils.

Guidance on Class Size Prejudice Appeals is available on the School Admissions website.



## Place Allocation Statement for St Patrick's Catholic Primary School

### September 2017 Intake

St Patrick's Catholic Primary School serves the Catholic parish of St Patrick's. It was built by parishioners and opened in 1933. Accordingly, the school is very much part of the parish community. The school is an academy which has been granted Catholic religious designation and is funded by the Department of Education (via the Education Funding Agency).

The parish of St Patrick's is defined by parish boundaries. A map showing the parish boundaries can be accessed on the school's website, or in hard copy from the school's office.

### Why has my child not been offered a place at St Patrick's Catholic Primary School?

The school's published admission number ("PAN") for Reception Year for the September 2017 intake is 30 pupils. This is based on the number and size of the buildings contained on the school's site, and is also influenced by the statutory maximum infant class size of 30, which applies to Reception Year, Year 1 and Year 2.

When more applications for admission are received for more children than there are places available, the order in which the available places are allocated is determined by reference to the oversubscription criteria set out in the school's Admission Policy for the September 2017 intake, which is published on the school's website and replicated in the local authority's prospectus for all schools and academies in its area.

St Patrick's Catholic Primary School received applications for the admission of 95 children to Reception Year in September 2017 on or before the closing date for applications which was on 15<sup>th</sup> January 2017. This represents 65 more applications than there are places available in that year group.

### Application of the Oversubscription Criteria for the September 2017 Intake

As the school was oversubscribed, the school's oversubscription criteria set out in the Admission Policy for the September 2017 intake were applied to determine the order in which places were allocated (i.e. to determine which of the 95 children were offered the 30 available places). One application was withdrawn after 15<sup>th</sup> January 2017, leaving 94 applications to process.

Registered Office, Blackswarth Road,  
Redfield, Bristol, BS5 8AS  
0117 3772387

[www.stpatricksbristol.org.uk](http://www.stpatricksbristol.org.uk)





These applications were ranked as follows:

Category	Description of criterion	No. of children
1	Baptised Catholic looked after and previously looked after children	0
2	Baptised Catholic children (or children with a parent) with an exceptional medical or social need	0
3.1	Baptised Catholic children with a sibling at the school at the time of admission living within the parish boundary	12
3.2	Baptised Catholic children with a sibling at the school at the time of admission living outside the parish boundary	1
4.1	Other baptised Catholic children living within the parish boundary	14
4.2	Other baptised Catholic children living outside the parish boundary	3
5.1	Other looked after and previously looked after children living within the parish boundary	0
5.2	Other looked after and previously looked after children living outside the parish boundary	0
6	Other children (or children with a parent) with an exceptional medical or social need	0
7.1	Other children with a sibling living within the parish boundary	0
7.2.1	Other children living within the parish boundary	0
7.2.2	Other children living outside the parish boundary	0

This means that the 30 available places were exhausted at category 4.2 (baptised Catholic children living outside the parish boundary), and the tie breaker was used to determine which of these 4 children were allocated the remaining 3 places. The tie breaker was random allocation, as set out in the school's Admission Policy for the September 2017 intake.

This allocation statement only reflects the applications where St Patrick's Catholic Primary School was the highest ranked choice school of the parent.

### **Waiting List**

The names of all children who were not offered a place will be maintained by the school until 31st December 2017, after which time the waiting list will be cleared. The waiting list is ranked strictly in accordance with the oversubscription criteria set out in the school's Admission Policy.

### **Admission Appeals**

All parents have a statutory right to appeal against a decision to refuse their child a place at a school to which they have applied for admission.

The deadline for submitting a request for an appeal is **19<sup>th</sup> May 2017**, and the procedure to be followed (including the form which must be used) is set out in the Appeals Procedure Booklet, which is published on the school's website.

If you do decide to appeal, you will need to consider the strength of your grounds of appeal, and the reasons why you feel that St. Patrick's Catholic Primary School is the only school you believe can meet your child's needs. You should carefully prepare your case, including well-reasoned grounds of appeal, and provide supporting evidence wherever possible.

Examples of grounds which will not be met with success are that your child's friend will be attending the school, or that the school is the nearest of several local schools.

An appeal panel may only uphold your appeal where:

- The admissions arrangements did not comply with the mandatory requirements of admission law; or
- The admission arrangements were incorrectly or impartially applied in your child's case; or
- The decision to refuse a place was not one which a reasonable admission authority would make in the circumstances of your case.

The School Admission Appeals Code 2012 defines an unreasonable decision as one which is "perverse in the light of the admission arrangements", namely that it was "beyond the range of responses open to a reasonable decision maker" or "a decision which is so outrageous in its defiance of logic or of accepted moral standards that no sensible person who had applied his mind to the question could have arrived at it". This is a high threshold to meet.

## Other information

Data relating to Previous Appeals		
Intake Year	Number of appeals	Outcomes
2012	15	1 upheld, 14 dismissed
2013	4	0 upheld, 4 dismissed
2014	0	N/A
2015	7	1 upheld, 6 dismissed
2016	2	0 upheld, 2 dismissed

## RECEPTION ADMISSION APPEAL FORM

Child's full name:

Child's date of birth:

Child's home address:

(as defined in the Admission Policy)

Parent's full name:

Parent's daytime contact number:

Parent's email address

Has evidence of Catholic baptism been provided to the school?

If "yes", please confirm the date that evidence of Catholic baptism was provided to the school:

**Grounds of appeal:**

**(Please clearly state your grounds of appeal, including reference to the Admission Policy and, in particular, the oversubscription criteria contained therein)**

<p><b>I confirm that I wish to appeal against the refusal of a place for my child at St Patrick's Catholic Primary School, and that the information provided in this form is true and accurate, to the best of my knowledge:</b></p>	
Parent's signature:	
Date of signature:	

Please complete this form and return by **19<sup>th</sup> May 2017** to:

Clerk to the Admissions Committee  
 St Patrick's Catholic Primary School  
 Blackswarth Road  
 Redfield  
 BRISTOL  
 BS5 8AS



### **Allocation Statement for St Peter's Church of England VC Primary School - September 2017**

As St Peter's Church of England VC Primary School was oversubscribed, the criteria stated in 'A guide for parents and carers on applying for a primary school place for the school year 2017 – 2018' have been applied to allocate the places that are available at the school.

**131** on-time (*86 x 1<sup>st</sup> preferences, 32 x 2<sup>nd</sup> preferences, 13 x 3<sup>rd</sup> preferences*) applications have been received for St Peter's Church of England VC Primary School, which has an Admission Number of 60.

#### **How the Initial Allocation of Places was made**

The **60** places have been offered to the following children:

1. Children in the care of the Local Authority or who were previously in Care but immediately after being in Care became subject to an adoption order, child arrangement order or special guardianship order. (**1** place)
2. Those children with siblings already at St Peter's Church of England VC Primary School and who will still be there in September 2017. (**33** places)
3. Those children living closest to St Peter's Church of England VC Primary School as measured in a direct line from the home address to the school. (**26** places)  
The furthest distance offered a place in this category was **0.462 km**.

#### **CLASS SIZE PREJUDICE APPEALS - Effects of Infant Class Size Legislation.**

Appeals for St Peter's Church of England VC Primary School will be heard on the basis of Class Size Prejudice as the school will have two Reception classes each containing 30 pupils.

Guidance on Class Size Prejudice Appeals is available on the School Admissions website

You should be aware that since the introduction of Infant Class Size Legislation in 2000, no appeals have been upheld in the parents' favour for this school.



## **ADMISSION TO INFANT/PRIMARY SCHOOL**

### **INITIAL ALLOCATION STATEMENT FOR ON-TIME APPLICATIONS**

#### **ST STEPHEN'S INFANT SCHOOL - SEPTEMBER 2017**

As St Stephen's Infant School was over-subscribed, it was necessary to use South Gloucestershire Council's admission criteria, as published in '*Admission to Primary Schools in South Gloucestershire September 2017 – August 2018*', to allocate the places available at the school.

174 applications were received by the 15 January 2017 for St Stephen's Infant School which has an admission number of 90.

#### **How the initial allocation of places was made:**

- 1 Child in Public Care and Previously in Public Care.
- 23 Local Siblings (within the Area of Prime Responsibility (APR)).
- 24 Children living within the APR
- 42 Children living outside the APR who live closest to the school: The furthest distance offered a place under this criterion was 0.951 mile.

A total of 8 refusals have been made. Please note that some applications may have been either withdrawn by the parents/carers, or discounted where a higher preference of school has been offered.

Distances from home to school are measured in a direct line between the address point of the child's home and a central point within the main school buildings using the Local Authority's computerised mapping system.

#### **Can I remain on a waiting list for my preferred school(s)?**

Yes. The waiting lists will be maintained until the end of Term 2 (December).

#### **CLASS SIZE PREJUDICE APPEALS – Effects of Infant Class Size Legislation:**

Appeals for St Stephen's Infant School will be heard on the basis of Infant Class Size Prejudice as the school will organise with three Reception classes each containing 30 pupils with one full-time qualified teacher (or the equivalent of).

**Please see enclosed leaflet for more information.**



**'Inspiring each other  
to excellence,  
in the Light of  
Christ.'**

## **St. Teresa's Catholic Primary School Bristol**

Luckington Road  
Monks Park  
Bristol  
BS7 0UP

Headteacher: Mrs Samantha Land

**Tel:** 0117 9030412

**Fax:** 0117 9030413

**Email:** [school@stteresas.org.uk](mailto:school@stteresas.org.uk)

**Website:** [www.st-teresas.bristol.sch.uk](http://www.st-teresas.bristol.sch.uk)

10 April 2017

## **2017**

As St Teresa's Catholic Primary School Bristol was oversubscribed, the Governors have applied their published admissions criteria to allocate the places that are available at the school.

74 applications were received for the 30 places available.

### **How the Initial Allocation of Places was made:**

- Looked After, or previously Looked After Children who are baptised Catholics for whom a place is requested by the relevant person / authority (category 1).  
**0 place**
- Baptised Catholic children who will have a sibling at St Teresa's Catholic Primary School Bristol and who reside within the parishes of St Teresa of the Child Jesus and St Vincent De Paul. (category 2). **6 places**
- Baptised Catholic children who reside within the parishes of St Teresa of the Child Jesus and St Vincent De Paul. (category 3) **18 places**
- Baptised Catholic children who will have a sibling at St Teresa's Catholic Primary School Bristol and who reside outside the parishes of St Teresa of the Child Jesus and St Vincent De Paul. (category 4). **0 places**
- Baptised Catholic children who reside outside the parishes of St Teresa of the Child Jesus and St Vincent De Paul. (category 5) **3 places**
- Looked After and previously Looked After Children. (category 6). **0 places**
- Children not in the above categories who will have a sibling at St Teresa's Catholic Primary School Bristol. (category 7). **3 places**
- Children not in the above categories. (category 8) **0 places**





## **St Ursula's E-ACT Academy**

Brecon Road,  
Westbury-on-Trym,  
Bristol BS9 4DT  
**0117 962 2616**  
office@stursulase-actacademy.org.uk

### **Allocation Statement for St. Ursula's E-ACT Academy - Sept 2017**

As St. Ursula's E-ACT Academy was oversubscribed, the criteria stated in the Bristol City Council 'Apply for a primary school place for the school year 2017-2018' booklet have been applied to allocate the places that are available at the school.

327 on-time applications have been received for St. Ursula's E-ACT Academy, which has an Admission Number of 90.

#### **How the Initial Allocation of Places was made.**

No places were reserved for children with a Statement of Special Educational Needs naming St. Ursula's E-ACT Academy.

The remaining 90 places have been offered to the following children:

1. Children in the care of the Local Authority or who were previously in Care but immediately after being in Care became subject to an adoption, residence or special guardianship order. (0 places)
2. Those children with siblings already at St. Ursula's E-ACT Academy and who will still be there in September 2017. (41 places)
3. Those children living closest to St. Ursula's E-ACT Academy as measured in a direct line from the home address to the school. The furthest distance offered a place in this category was 2.414 km. (49 places)

#### **CLASS SIZE PREJUDICE APPEALS - Effects of Infant Class Size Legislation.**

Appeals for St. Ursula's E-ACT Academy will be heard on the basis of Class Size Prejudice as the school will be running three Reception classes each containing 30 pupils.

I enclose a sheet giving further information on Class Size Prejudice Appeals.

**You should be aware that since the introduction of Infant Class Size Legislation in 2000, no appeals have been upheld in the parents' favour for this school.**

***'Learning together to become the best we can be, in an inspiring and happy community'***



### **Allocation Statement for St. Werburgh's Primary School - September 2017**

As St Werburgh's Primary School was oversubscribed, the criteria stated in the booklet '*A Guide for parents and carers on applying for a primary school place for the school year 2017-2018*' have been applied to allocate the places that are available at the school.

**163** on-time applications (*73 x 1<sup>st</sup> preferences, 43 x 2<sup>nd</sup> preferences, 47 x 3<sup>d</sup> preferences*) have been received for St. Werburgh's Primary School, which has an Admission Number of **56**.

### **How the Initial Allocation of Places was made**

The **56** places have been offered to the following children:

1. Those children who are defined as 'Children in Care'; or children who were previously in care, but immediately after being in care became subject to an adoption, child arrangements, or special guardianship order. (**0** place).
2. Those children with siblings already at St. Werburgh's Primary School and who will still be there in September 2017. (**25** places)
3. Those children living closest to St. Werburgh's Primary School as measured in a direct line from the home address to the school. (**31** places)

The furthest distance offered a place in this category was **0.613 km**.

## **Letter of Appeal – St Werburghs Primary School**

Please submit a separate letter for each school

### **Parent/Carer details – BLOCK CAPITALS**

Name .....

Date: ----/----/-----

### **Contact Details**

Home Telephone Number .....

Mobile Telephone Number .....

Alternative Telephone Number .....

Email address .....

### **Child's details**

First Name(s): .....

Surname/Family Name: .....

Date of Birth: ----/----/-----

Address: .....  
.....  
.....

I wish to appeal for a place at ..... School

### **Reasons for Preference/Grounds for Appeal:**

Please provide your grounds of appeal in writing.

An appeal hearing cannot be set up until the written grounds of appeal are received. *If required, please continue on a separate sheet.*

Please return to - School Admissions (Parkview Campus), Bristol City Council,

PO Box 3176, BRISTOL, BS3 9FS by 23<sup>rd</sup> May 2017

## **School Appeals Guidance Notes for St Werburghs Primary School**

The appeal panel will take into account the reasons for your preference, and individual circumstances relating to your application. You may wish to write a further letter to the appeal panel in advance of your appeal. Any additional correspondence should be sent to School Admissions as soon as possible.

You will be given not less than 10 school days' notice of the date, time and place of the hearing at which you can be present and speak. You can, if you wish, be accompanied by a friend who may speak for you and represent your views to the appeal panel. Parents for whom English is not the first language may wish to arrange for an interpreter to be present.

You are encouraged to attend the appeal panel meeting. If you prefer not to attend the panel will consider the case based on your written submission(s). Alternatively, a friend or representative may present the appeal on your behalf.

You may wish to write down in advance what you wish to say to the panel, and use your own notes to speak from on the day. It is important that you don't think afterwards of something you forgot to say, or wish you had said, as the panel must not accept additional information after the appeal has been heard.

You will need to demonstrate that your child's need for a place at the school outweighs the Admission Authority's reasons for refusing a place. You should consider how that school will meet your child's individual needs. What will your child gain from attending your preferred school that he/she will not get from attending any other school?

You are also welcome to submit additional letters of support from professionals or other parties who have been, or are currently, involved with your child. Please submit all supporting documentation by 23rd May 2017. These may be letters which substantiate your case, or actively support your preference. The appeal panel will take into account all submissions received by 23rd May 2017.

Appeals are normally held at City Hall, Bristol. When you arrive for your appeal, you will be directed to a waiting area. The Clerk to the Independent School Appeals Panel will explain the procedure of the appeal hearing before the appeal begins.

The sequence of events is likely to be:

### **School's Case:**

- i) Presentation of the school's case by the representative of the Admission Authority
- ii) Questioning by the parent/carer(s) and the Appeal Panel
- iii) Summing-up by the representative of the Admission Authority

### **Parent/Carer's Case:**

- iv) Presentation of the case by the parent/carer
- v) Questioning by the Appeal Panel/representative of the Admission Authority
- vi) Summing-up by the parent/carer

If more than one family are appealing for the same school on the same day all parents/carers are invited to the same School's case hearing. The Parent/Carer's case will be held in private and will be confidential. It should not be necessary for a child to attend, or for there to be witnesses, other than a friend or interpreter mentioned previously.

The appeal panel will ask all parties to withdraw while considering a decision. The decision of the appeal panel will be sent to you in writing by the Clerk to the School Appeals Panel. The decisions of appeal panels are binding upon the parent and the Admission Authority, but parents have statutory rights under other legislation should they wish the matter to be investigated further.

### **Useful Links**

Department for Education (DfE) <https://www.gov.uk/government/publications/school-admissions-code--2>  
Advisory Centre for Education provides online leaflets and guidance for parents: E-mail: [enquiries@ace-ed.org.uk](mailto:enquiries@ace-ed.org.uk) Website: [www.ace-ed.org.uk](http://www.ace-ed.org.uk) Advice Line: 0300 0115 142

## **Letter of Appeal – St Werburghs Primary School**

Please submit a separate letter for each school

### **Parent/Carer details – BLOCK CAPITALS**

Name .....

Date: ----/----/-----

### **Contact Details**

Home Telephone Number .....

Mobile Telephone Number .....

Alternative Telephone Number .....

Email address .....

### **Child's details**

First Name(s): .....

Surname/Family Name: .....

Date of Birth: ----/----/-----

Address: .....  
.....  
.....

I wish to appeal for a place at ..... School

### **Reasons for Preference/Grounds for Appeal:**

Please provide your grounds of appeal in writing.

An appeal hearing cannot be set up until the written grounds of appeal are received. *If required, please continue on a separate sheet.*

Please return to - School Admissions (Parkview Campus), Bristol City Council,

PO Box 3176, BRISTOL, BS3 9FS by 23<sup>rd</sup> May 2017



## **ADMISSION TO INFANT/PRIMARY SCHOOL**

### **INITIAL ALLOCATION STATEMENT FOR ON-TIME APPLICATIONS**

#### **STANBRIDGE PRIMARY SCHOOL - SEPTEMBER 2017**

As Stanbridge Primary School was over-subscribed, it was necessary to use South Gloucestershire Council's admission criteria, as published in '*Admission to Primary Schools in South Gloucestershire September 2017 – August 2018*', to allocate the places available at the school.

175 applications were received by the 15 January 2017 for Stanbridge Primary School which has an admission number of 60.

#### **How the initial allocation of places was made:**

- 1 Child with an Education, Health and Care Plan (EHCP)
- 17 Local Siblings (within the Area of Prime Responsibility (APR)).
- 42 Children living within the APR who live closest to the school. The furthest distance offered a place under this criterion was 0.944 mile.

A total of 20 refusals have been made. Please note that some applications may have been either withdrawn by the parents/carers, or discounted where a higher preference of school has been offered.

Distances from home to school are measured in a direct line between the address point of the child's home and a central point within the main school buildings using the Local Authority's computerised mapping system.

#### **Can I remain on a waiting list for my preferred school(s)?**

Yes. The waiting lists will be maintained until the end of Term 2 (December).

#### **CLASS SIZE PREJUDICE APPEALS – Effects of Infant Class Size Legislation:**

Appeals for Stanbridge Primary School will be heard on the basis of Infant Class Size Prejudice as the school will organise with two Reception classes each containing 30 pupils with one full-time qualified teacher (or the equivalent of) in each class.

**Please see enclosed leaflet for more information.**



## **ADMISSION TO INFANT/PRIMARY SCHOOL**

### **INITIAL ALLOCATION STATEMENT FOR ON-TIME APPLICATIONS**

#### **STAPLE HILL PRIMARY SCHOOL - SEPTEMBER 2017**

As Staple Hill Primary School was over-subscribed, it was necessary to use South Gloucestershire Council's admission criteria, as published in '*Admission to Primary Schools in South Gloucestershire September 2017 – August 2018*', to allocate the places available at the school.

125 applications were received by the 15 January 2017 for Staple Hill Primary School which has an admission number of 45.

#### **How the initial allocation of places was made:**

10 Local Siblings (within the Area of Prime Responsibility (APR)).

23 Children living within the APR.

12 Children living outside the APR who live closest to the school: The furthest distance offered a place under this criterion was 0.438 mile.

A total of 16 refusals have been made. Please note that some applications may have been either withdrawn by the parents/carers, or discounted where a higher preference of school has been offered.

Distances from home to school are measured in a direct line between the address point of the child's home and a central point within the main school buildings using the Local Authority's computerised mapping system.

#### **Can I remain on a waiting list for my preferred school(s)?**

Yes. The waiting lists will be maintained until the end of Term 2 (December).

#### **CLASS SIZE PREJUDICE APPEALS – Effects of Infant Class Size Legislation:**

Appeals for Staple Hill Primary School will be heard on the basis of Infant Class Size Prejudice where relevant measures would have to be taken not in September 2017, as the school will organise with two small discrete Reception classes, but in future years.

**Please see enclosed leaflet for more information.**

### **September 2017 Reception Allocation Summary for Steiner Academy Bristol**

Steiner Academy Bristol is its own Admissions Authority and has its own Admissions Arrangements.

The following summary indicates the number of places available in Reception and the places offered against each oversubscription criterion for entry to the school in September 2017.

<b>Year Group</b>	<b>Admission Number</b>	<b>Total Preferences Received</b>
Reception	52	87

	<b>Criterion</b>	<b>Number of children offered places</b>
1	Children in the care of a Local Authority at the time of application, or whose care has ceased because he/she has become adopted or the subject of a residence or special guardianship order	1
2	Children with a sibling on roll at the Academy at the time of application A sibling is a full, adopted, half or step brother or sister, including a full, adopted, half or step brother or sister living at a different address. Foster children will count as a brother or sister to those living within the foster household or, where appropriate, the natural parental home address.	9
3	Children of the Founding Directors	0
4	Children of staff employed at the Academy where recruitment is to fill a demonstrable skills shortage	2



5	Children who are eligible for Pupil Premium at the time of application	5
	Children not satisfying a higher criterion.	35

The straight-line distance between home and the Academy site (St. Matthias campus) for the last child allocated a place is as follows:

Year Group	Straight Line distance in miles
Reception	2.007

The Academy Admissions Committee will maintain waiting lists for each year group until the end of the 2017 academic year that will include the names of all children refused admission. Names will automatically be entered whenever an application is refused and listed in ranked order according to the oversubscription criteria. If a place is no longer required, it will be re-offered for the child ranked highest on the waiting list at that time.

### **Admissions appeals**

If you have been refused a place and you are not happy with the decision, you have the right to appeal. You must appeal within one month of the date when you received notice that your application was unsuccessful.

You can download an appeal form, <http://www.steineracademybristol.org.uk/admissions/appeals/> or you can contact us and ask us to email or post you a form.

All appeals will be heard by an independent panel arranged via Bristol City Council, in the same way as appeals for other state funded schools.



## **Steiner Academy Bristol**

### **Admission to the Academy in September 2017**

#### **General Reception Appeal Statement Prepared By the Admissions Authority**

##### **1.0 Context**

This statement has been prepared by the Academy's Admissions Committee in order to explain to the Appeal Panel why the school is unable to admit an additional child to Reception at the present time.

The Admissions Committee contends that:

To admit a further child into this year group will prejudice the efficient delivery of education and/or the efficient use of resources. In other words, the admission of an additional child will impact on the class and on school organisation to such an extent that it will be unacceptably difficult to ensure the continued delivery of high quality education or the well-being of the children and staff, both now and into the future.

The Admissions Committee respectfully requests that the Appeal Panel take into consideration the circumstances set out in this statement when reaching their decision.

We understand that the pupils to whom these appeals relate have all been offered places at other schools and that there is no general shortage of secondary school places in the area.

##### **2.0 The position at the Academy**

Steiner Academy Bristol is a relatively new school, opened in September 2014. The school will grow to be an all-thorough school with 624 pupils, consisting of two classes of 26 in each year group from Reception to Year 11.

For September 2017, the school is admitting 52 children at Reception, and one class of 26 children into Year 7. This forms part of a long-term growth plan agreed with DfE before the school opened.

Steiner Academy Bristol has a non-selective admissions policy which includes a criterion giving priority to children eligible for Pupil Premium, as part of our aspiration to be an inclusive community school.

The school operates a specific education model and our PAN of 26 per class is an integral part of that model.

## **2.1 School site**

Steiner Academy Bristol is the fourth Steiner Academy in the UK, offering a distinctive curriculum and educational ethos within a state-funded framework. A small class size is a central part of the educational planning for the school.

The school is based on the Grade 2\*- listed St Matthias Campus site in Fishponds.

The permanent site design has been based around two form of entry with a PAN of 26. The rooms within the listed buildings have been allocated as classrooms with that number in mind, and in some cases, classrooms are only just large enough to accommodate 26 pupils. There was also little flexibility to enlarge rooms located in listed buildings, as the external architecture could not be altered.

The smallest home classroom for primary age children will be 47.7 sq m. The BB98 building standards require 49.2 sq m for a class of 26 secondary children, but under the Free School programme, classroom sizes of BB98 less 5% are considered acceptable; this gives 46.74 sq m. A single additional child in this class would push the room beyond even current very modest allowances.

Five primary classrooms in total are under 51 sq m in area, so the problem is a significant one for the school and cannot be managed simply by allocating a single smaller class to the smallest rooms.

For specialist teaching, classes will be split into smaller groups of 13 (half a class) for craft subjects, and into 17 -18 (one third of a year group of 52) for science. The woodwork, pottery and machine rooms have been designed to accommodate groups of 13 pupils, and the science labs have been designed to accommodate 18 pupils. One of the science labs has a floor area of 45 sq m, which is below the guidance given in BB103 of 49.8m for this number of pupils. Any additional pupils would create problems in operating these specialist areas.

## **2.2 Inclusive education**

Within the Steiner educational framework, a great deal of emphasis is placed on the class as a single, supportive group. Classes are not streamed by ability, so that there is a very wide range of abilities within each class. This wide range of abilities can be successfully managed because class sizes are relatively small and staffing levels are relatively high. Our PAN of 26 was chosen after careful consideration of classroom practice, to allow teachers and assistants to manage a very diverse range of abilities without breaking up the inclusive framework of the class unit.

In particular we are concerned to meet the needs of children with special educational needs; those with emotional and behavioural issues; and those who are considered gifted and talented. We welcome all our pupils and will endeavor to support of all them to reach their full potential, but within the inclusive, unstreamed format of our educational model, this relies on the right class size and staff/pupil ratio. The experience of our staff and of the other Steiner Academies is that a PAN of 26 offers the optimum balance in this.

The need to offer good support for Gifted and Talented pupils was highlighted by Ofsted in their most recent report on our sister school, Steiner Academy Frome. As a result of this report, the Department

for Education has informed us that they will require evidence of our plans to meet the needs of the most able pupils, and Ofsted themselves will give particular attention to our work in this area during our first full inspection, which will take place in the school year 2016-17. It is therefore extremely important for the school to be able to deliver its educational model effectively, and again, the PAN chosen is the optimum size for this.

The school also has a large number of children who have been in the care system at some point in their lives. For the school year 17-18, we expect to have 30 children on roll who are looked after or who have ceased to be so following adoption or Special Guardianship Order, from a total of 346 pupils on roll — 8.7% of the school population, against a national average of around 1.5%. Our experience is that these children often have considerable emotional and behavioural needs. Our policy is to work to meet these needs within an inclusive, whole-class framework, and again, our decision to adopt a smaller class size is intended to facilitate this. Carers and adoptive parents have chosen our school because of the specific ethos of the school, which aims to provide a nurturing, low-stress environment. A small class size is an important element of this.

### **2.3 Fairness in admissions and parental engagement and support**

Our aim is to build a strong, mutually supportive community among all our families. They have placed their trust in us to deliver on our vision for a school, a school which is based around small class sizes; high staff/pupil ratios; individual attention for each child; and a very broad and creative curriculum.

The concept of a school with small class sizes has also been extremely popular with parents and teachers. Since the school opened we have been consistently over-subscribed, and have sadly therefore had to refuse applications from very many parents. Our admissions process has been very carefully run to manage this demand.

Above all, parents are concerned with the fairness of school admissions. Families understand that if there is very high demand they might not get a place; however, it is crucial that the process for allocating places is perceived as fair. It would create a strong perception of unfairness if a child was given a place for no other reason than that an appeal was lodged, when a significant part of the reason for over-subscription was the offer of small class sizes.

We feel that this could create tension and discomfort within the school community and a perception of unfairness around admissions which could ultimately be prejudicial to the cohesion of the school community, the level of parental trust and engagement and thus the achievement of children.

The school contends strongly that it is our right as a school to choose the class size that we think is right for our educational model, and to manage admissions to those classes through a fair and non-selective admissions process.

### **3.0 How places were allocated for September 2017**

**June 2013:** Admissions Policy for 2014 entry including PAN approved by DfE

**October 1<sup>st</sup> - November 12<sup>th</sup> 2013:** Statutory Consultation under Section 10 of the Academies Act carried out including details of admissions arrangements

**17<sup>th</sup> December 2013:** Approval received from DfE allowing derogation from the Schools Admission Code for the criteria in our Admissions Policy relating to Children of Founding Directors

**3rd December 2015 to January 28th 2016:** Public consultation on Admissions Policy for 2017-18

**1<sup>st</sup> September 2016 to 15<sup>th</sup> January 2017:** Admissions open for Reception via BCC coordinated admissions process.

**1<sup>st</sup> March 2017:** Offers of Reception places made via BCC coordinated admissions process.

First round places were allocated according to our Admissions Policy as follows:

Children with Education, Health and Care Plans: 0

1. Looked-after children: 1
2. Children with a sibling on roll: 9
3. Children of Founding Directors: 0
4. Children of members of staff: 2
5. Children eligible for Pupil Premium and who live within 2 miles of the school site: 5
6. Children not meeting a higher criterion: 35

Of these the furthest family lives 2.007 miles from the school site.

#### **4.0 Conclusion**

Maintaining high quality education and ensuring the health and wellbeing of all the children and staff at Steiner Academy Bristol is of paramount importance to the Governors. To this end, every admission application is carefully considered under our admission policy.

Our class size of 26 has been chosen by the school as an integral part of the educational model, and this has been widely welcomed by parents.

An additional admission to Reception at the present time will have a negative impact on our educational model, adding cumulative pressure and prejudicing the efficient delivery of education and the efficient use of resources.

Regretfully, there are no reasonable measures that can be taken to provide more places in Reception now or in the foreseeable future.

- Places have been allocated up to PAN, in strict accordance with the published admission arrangements.
- This school was oversubscribed for September 2017 with 87 applications being received for 52 places.
- The school's educational model is carefully structured around a class size of 26, and this offer of a small class size forms a central part of the appeal to parents.

- The school site is being designed around a standard class size of 26 to fit our educational model.

It is respectfully requested that the Appeal Panel recognises these points when considering the impact of a further admission at Steiner Academy Bristol.



## **Stoke Bishop Church of England Primary School**

Cedar Park,  
Stoke Bishop,  
Bristol. BS9 1BW

Telephone: 0117 3772173 Fax: 0117 3772174

Email: [stoke.bishop.p@bristol.gov.uk](mailto:stoke.bishop.p@bristol.gov.uk) [www.stokebishoppprimary.ik.org](http://www.stokebishoppprimary.ik.org)

Head Teacher: Mrs Philippa Hepworth

### **Allocation Statement for Stoke Bishop Church of England Primary School - September 2017**

As Stoke Bishop Church of England Primary School was oversubscribed, the criteria stated in the Bristol City Council 'Apply for a primary school place for the school year 2017-2018' booklet have been applied to allocate the places that are available at the school.

**140** on-time applications have been received for Stoke Bishop Church of England Primary School, which has an Admission Number of 60.

#### **How the Initial Allocation of Places was made**

The **60** places have been offered to the following children:

1. Children in the care of the Local Authority or who were previously in Care but immediately after being in Care became subject to an adoption, residence or special guardianship order. (**1** place)
2. Those children with siblings already at Stoke Bishop Church of England Primary School and who will still be there in September 2017. (**24** places)
3. Those children living closest to Stoke Bishop Church of England Primary School as measured in a direct line from the home address to the school. (**35** places)  
The furthest distance offered a place in this category was **2.6km**.

#### **CLASS SIZE PREJUDICE APPEALS - Effects of Infant Class Size Legislation.**

Appeals for Stoke Bishop Church of England Primary School will be heard on the basis of Class Size Prejudice as the school will be running two Reception classes each containing 30 pupils.

**You should be aware that since the introduction of Infant Class Size Legislation in 2000, no appeals have been upheld in the parents' favour for this school.**





### **Allocation Statement for Victoria Park Primary School - September 2017**

As Victoria Park Primary School was oversubscribed, the criteria stated in 'A guide for parents and carers on applying for a primary school place for the school year 2017 – 2018' have been applied to allocate the places that are available at the school.

**217** on-time applications (*86 x 1<sup>st</sup> preferences, 60 x 2<sup>nd</sup> preferences, 71 x 3<sup>rd</sup> preferences*) have been received for Victoria Park Primary School, which has an Admission Number of 60.

#### **How the Initial Allocation of Places was made**

The **60** places have been offered to the following children:

1. Children in the care of the Local Authority or who were previously in Care but immediately after being in Care became subject to an adoption order, child arrangement order or special guardianship order. (**1** place)
2. Those children with siblings already at Victoria Park Primary School and who will still be there in September 2017. (**27** places)
3. Those children living closest to Victoria Park Primary School as measured in a direct line from the home address to the school. (**32** places)  
The furthest distance offered a place in this category was **0.431 km**.

#### **CLASS SIZE PREJUDICE APPEALS - Effects of Infant Class Size Legislation.**

Appeals for Victoria Park Primary School will be heard on the basis of Class Size Prejudice as the school will have two Reception classes each containing 30 pupils.

Guidance on Class Size Prejudice Appeals is available on the School Admissions website.

You should be aware that since the introduction of Infant Class Size Legislation in 2000, no appeals have been upheld in the parents' favour for this school.



Longdown Avenue  
Stoke Gifford  
South Gloucestershire  
BS16 1GE  
Web: wallscourtfarmacademy.org.uk

**ADMISSION TO INFANT/PRIMARY SCHOOL**  
**INITIAL ALLOCATION STATEMENT FOR ON-TIME APPLICATIONS**  
**WALLSCOURT FARM ACADEMY - SEPTEMBER 2017**

As Wallscourt Farm Academy was over-subscribed, it was necessary to use the Academy Council's published admission criteria, as published in 'Admission to Primary Schools in South Gloucestershire September 2017 – August 2018', to allocate the places available at the school.

122 Applications were received by the 15 January 2017 for Wallscourt Farm Academy which has an admission number of 60.

**How the initial allocation of places was made:**

22 Siblings

38 Children who live closest to the school: The furthest distance offered a place under this criterion was 0.293 mile.

A total of 34 refusals have been made. Please note that some applications may have been either withdrawn by the parents/carers, or discounted where a higher preference of school has been offered.

Distances from home to school are measured in a direct line between the address point of the child's home and a central point within the main school buildings using the Local Authority's computerised mapping system.

**Can I remain on a waiting list for my preferred school(s)?**

Yes. The waiting lists will be maintained until the end of Term 2 (December).

**CLASS SIZE PREJUDICE APPEALS – Effects of Infant Class Size Legislation:**

Appeals for Wallscourt Farm Academy will be heard on the basis of Infant Class Size Prejudice as the school will organise with two Reception classes each containing 30 pupils with one full-time qualified teacher (or the equivalent of) in each class.

**Please see enclosed leaflet for more information.**



Longdown Avenue  
Stoke Gifford  
South Gloucestershire  
BS16 1GE  
Web: wallscourtfarmacademy.org.uk

## APPEAL FOR A SCHOOL PLACE IN ACADEMIC YEAR 2017/18

**This form should only be completed if you wish to make a formal appeal for Wallscourt Farm Academy.**

**Once completed, please return to: South Gloucestershire Council (CAH), Admissions & Transport Team, PO Box 298, Civic Centre, High Street, Bristol BS15 0DQ by 24 May 2017.**

**INFANT CLASS SIZE** – Government legislation means that infant classes (Reception, Year 1 and Year 2) with one teacher cannot contain more than 30 pupils.

At Infant Class Size Appeals the independent appeal panel can only look at:

- Whether the admission arrangements were lawful
- Whether the admission arrangements were incorrectly applied and your child should have been offered a place.
- Whether it was unreasonable/perverse (in law) to refuse your preference. The appeal panel would need to be satisfied that the decision was so completely absurd / outrageous that no reasonable person, with the same facts, would have made that decision.

Given the extremely limited grounds on which an appeal may be upheld, Infant Class Size Appeals are rarely successful. Since the legislation was introduced from September 2001, only 4 such appeals have been successful within South Gloucestershire.

Parents/carers can find it frustrating when they realise how very limited the powers of the Appeal Panel are. We are therefore drawing this to your attention now, so you can make an informed choice about whether you wish to appeal or not. The purpose of this information is to explain clearly the role of the Appeal Panel and not in any way discourage you from appealing, which is of course, your legal right if you feel you have grounds to do so.

**Please complete in black ink**

**LETTER OF APPEAL FOR** **Wallscourt Farm Academy**

**Preference: 1<sup>st</sup>, 2<sup>nd</sup> or 3<sup>rd</sup> – (please indicate)**

Written by \_\_\_\_\_

Name of Parent/Carer

\_\_\_\_\_

Signature of Parent/Carer

\_\_\_\_\_

Date

\_\_\_\_\_

Telephone Number(s)

**Full Name of Child:** \_\_\_\_\_

**Date of Birth:** \_\_\_\_\_

**Address of Child:** \_\_\_\_\_

\_\_\_\_\_ Postcode \_\_\_\_\_

## Grounds for Appeal:

The appeal for the school named overleaf is expected to be heard in the context of infant class size, please indicate which of the restricted circumstances you believe applies to your case.

**Please submit any documentary proof with this appeal letter.**

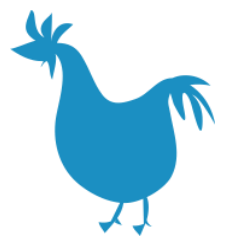
- |   |   |
|---|---|
| a | The admissions arrangements were not lawful   |
| b | The admission arrangements were not correctly applied and if they were my child would have been offered a place |
| c | The decision not to offer my child a place was unreasonable/perverse in a legal sense                           |

Please use the space below to set out the grounds for your appeal and if necessary attach a separate sheet.

**Please attach a separate sheet if necessary**

**“The correct analogy for the mind is not a vessel that needs filling, but wood that needs igniting.”**

Plutarch





### **Allocation Statement for Wansdyke Primary School - September 2017**

As Wansdyke Primary School was oversubscribed, the criteria stated in 'A guide for parents and carers on applying for a primary school place for the school year 2017 – 2018' have been applied to allocate the places that are available at the school.

**107** on-time applications (*35 x 1<sup>st</sup> preferences, 48 x 2<sup>nd</sup> preferences, 24 x 3<sup>d</sup> preferences*) have been received for Wansdyke Primary School, which has an Admission Number of 30.

#### **How the Initial Allocation of Places was made**

The **30** places have been offered to the following children:

1. Children in the care of the Local Authority or who were previously in Care but immediately after being in Care became subject to an adoption order, child arrangement order or special guardianship order (**0** places)
2. Those children with siblings already at Wansdyke Primary School and who will still be there in September 2017. (**20** places)
3. Those children living closest to Wansdyke Primary School as measured in a direct line from the home address to the school. (**10** places)

The furthest distance offered a place in this category was **0.877 km**.

#### **CLASS SIZE PREJUDICE APPEALS - Effects of Infant Class Size Legislation.**

Appeals for Wansdyke Primary School will be heard on the basis of Class Size Prejudice as the school will have one Reception class containing 30 pupils.

Guidance on Class Size Prejudice Appeals is available on the School Admissions website

### **Allocation Statement for Waycroft Academy - September 2017**

As Waycroft Academy was oversubscribed, the criteria stated in 'A guide for parents and carers on applying for a primary school place for the school year 2017 – 2018' have been applied to allocate the places that are available at the Academy.

**98** on-time applications (*68 x 1<sup>st</sup> preferences, 20 x 2<sup>nd</sup> preferences, 10 x 3<sup>rd</sup> preferences*) have been received for Waycroft Academy, which has an Admission Number of 60.

#### **How the Initial Allocation of Places was made**

The **60** places have been offered to the following children:

1. Children in the care of the Local Authority or who were previously in Care but immediately after being in Care became subject to an adoption order, child arrangement order or special guardianship order. (**1** place)
2. Those children with siblings already at Waycroft Academy and who will still be there in September 2017. (**26** places)
3. Those children living closest to Waycroft Academy as measured in a direct line from the home address to the Academy. (**33** places)

The furthest distance offered a place in this category was **0.658 km**.

#### **CLASS SIZE PREJUDICE APPEALS - Effects of Infant Class Size Legislation.**

Appeals for Waycroft Academy will be heard on the basis of Class Size Prejudice as the Academy will have two Reception classes each containing 30 pupils.

Guidance on Class Size Prejudice Appeals is available on the School Admissions website.



### **Allocation Statement for West Town Lane Academy - September 2017**

As West Town Lane Academy was oversubscribed, the criteria stated in the booklet '*A Guide for parents and carers on applying for a primary school place for the school year 2017-2018*' have been applied to allocate the places that are available at the Academy.

**243** on-time applications (*105 x 1<sup>st</sup> preferences, 69 x 2<sup>nd</sup> preferences, 69 x 3<sup>d</sup> preferences*) have been received for West Town Lane Academy, which has an Admission Number of 90.

### **How the Initial Allocation of Places was made**

The **90** places have been offered to the following children:

1. Those children who are defined as 'Children in Care'; or children who were previously in care, but immediately after being in care became subject to an adoption order, child arrangement order, or special guardianship order. (**0** places).
2. Those children with siblings already at West Town Lane Academy who will still be on roll in September 2017. (**45** places)
3. Those children living closest to West Town Lane Academy as measured in a direct line from the home address to the Academy (**45** places)

The furthest distance offered a place in this category was **0.836 km**.

### **CLASS SIZE PREJUDICE APPEALS - Effects of Infant Class Size Legislation.**

Appeals for West Town Lane Academy will be heard on the basis of Class Size Prejudice. The Academy has three Reception classes each containing 30 children.

Guidance on Class Size Prejudice Appeals is available on the School Admissions website.

**You should be aware that since the introduction of Infant Class Size Legislation in 2000, no appeals have been upheld in the parents' favour for the academy.**



**Westbury-on-Trym**

Church of England Academy

Channells Hill, Bristol BS9 3HZ

Telephone: (0117) 377 2605

Email: [info@westburyontrym.academy](mailto:info@westburyontrym.academy)

[www.westburyontrym.academy](http://www.westburyontrym.academy)

**Headteacher:** Mrs Cathy Milton

### **Allocation Statement for Westbury-on-Trym C of E Academy – September 2017**

As Westbury-on-Trym Church of England Academy was over-subscribed, the criteria stated in the Bristol City Council 'Apply for a Primary School place for the school year 2017/18' booklet have been applied to allocate the places that are available at the school.

**185** on-time applications have been received for Westbury-on-Trym C of E Academy, which has an admission number of **60**.

#### **How the initial allocation of places was made by the local Authority on behalf of Westbury-on-Trym Church of England Academy:**

The **60** places have been offered to the following children:

1. Children in the care of the Local Authority, or who were previously in Care but immediately after being in Care became subject to an adoption, residence or special guardianship order. (**0** places).
2. Those children with siblings already at Westbury-on-Trym C of E Academy and who will still be there in September 2017 (**26** places)
3. Those children living closest to Westbury-on-Trym C of E Academy as measured in a direct line from the home address to the school. (**34** places). The furthest distance offered a place in this category was 742 metres.

### **CLASS SIZE PREJUDICE APPEALS – Effects of Infant Class Size Legislation.**

Appeals for Westbury-on-Trym C of E Academy will be heard on the basis of Class Size Prejudice as the school will be running two Reception class each containing 30 pupils.

***You should be aware that since the introduction on Infant Class Size Legislation in 2000, no appeals have been upheld in the parents' favour for this school***



Please return to address above.

## **LETTER OF APPEAL - CLASS SIZE PREJUDICE APPEAL**

Full Name of Child: \_\_\_\_\_

Date of Birth: \_\_\_\_\_

I wish to appeal for a place at \_\_\_\_\_ School

\_\_\_\_\_ Name of Parent/Carer

\_\_\_\_\_ Signature of Parent/Carer

\_\_\_\_\_ Date

(Please submit a separate letter for each school)

### **Grounds for Appeal**

You must read the enclosed information on the effects of Infant Class Size legislation, and indicate below which of the restricted circumstances you believe applies to your case.

- |  | Tick                     |
|--|--------------------------|
| (a) that your child <u>would have been offered a place</u> if the admission arrangements had been properly implemented.  | <input type="checkbox"/> |
| (b) the child would have been offered a place if the arrangements had not been contrary to mandatory provisions in the School Admissions Code and the School Standards and Framework Act 1998. | <input type="checkbox"/> |
| (c) that the decision was not one which a reasonable admission authority would make in the circumstances of the case.  | <input type="checkbox"/> |

Please give reasons for your appeal either overleaf or on a separate sheet.





Headteacher: Mr John Jolliffe BSc MA

T: 0117 377 2676  
F: 0117 377 2677  
E: [westburyparkp@bristol.gov.uk](mailto:westburyparkp@bristol.gov.uk)  
W: [www.westburyparkschool.co.uk](http://www.westburyparkschool.co.uk)

### **Allocation Statement for Westbury Park Primary School - September 2017**

As Westbury Park Primary School was oversubscribed, the criteria stated in the Bristol City Council 'Apply for a primary school place for the school year 2017-2018' booklet have been applied to allocate the places that are available at the school.

**212** on-time applications have been received for Westbury Park Primary School, which has an Admission Number of 60.

#### **How the Initial Allocation of Places was made**

The **60** places have been offered to the following children:

1. Children in the care of the Local Authority or who were previously in Care but immediately after being in Care became subject to an adoption, residence or special guardianship order. (**0** places)
2. Those children with siblings already at Westbury Park Primary School and who will still be there in September 2017. (**23** places)
3. Those children living closest to Westbury Park Primary School as measured in a direct line from the home address to the school. (**37** places) The furthest distance offered a place in this category was **512 metres**.

#### **CLASS SIZE PREJUDICE APPEALS - Effects of Infant Class Size Legislation.**

Appeals for Westbury Park Primary School will be heard on the basis of Class Size Prejudice as the school will be running two Reception classes each containing 30 pupils.

**You should be aware that since the introduction of Infant Class Size Legislation in 2000, no appeals have been upheld in the parents' favour for this school.**



### **Allocation Statement for Whitehall Primary School - September 2017**

As Whitehall Primary School was oversubscribed, the criteria stated in the booklet '*A Guide for parents and carers on applying for a primary school place for the school year 2017-2018*' have been applied to allocate the places that are available at the school.

**296** on-time applications (*165 x 1<sup>st</sup> preferences, 83 x 2<sup>nd</sup> preferences, 48 x 3<sup>d</sup> preferences*) have been received for Whitehall Primary School, which has an Admission Number of **90**.

#### **How the Initial Allocation of Places was made**

The **90** places have been offered to the following children:

1. Those children who are defined as 'Children in Care'; or children who were previously in care, but immediately after being in care became subject to an adoption, child arrangements, or special guardianship order. (**3** places).
2. Those children with siblings already at Whitehall Primary School who will still be on roll in September 2017. (**43** places)
3. Those children living closest to Whitehall Primary School as measured in a direct line from the home address to the school (**44** places)

The furthest distance offered a place in this category was **0.470 km**.

#### **CLASS SIZE PREJUDICE APPEALS - Effects of Infant Class Size Legislation.**

Appeals for Whitehall Primary School will be heard on the basis of Class Size Prejudice. The school has three Reception classes each containing 30 children.

Guidance on Class Size Prejudice Appeals is available on the School Admissions website.

**You should be aware that since the introduction of Infant Class Size Legislation in 2000, no appeals have been upheld in the parents' favour for this school.**