



Avon

Stoke Park Sculpture Trail Activity sheet



If you go down to the woods today you're sure of a big surprise!

In 2016 local schools and groups designed a Sculpture trail in Stoke Park.

For more information please visit:

<https://www.bristol.gov.uk/museums-parks-sports-culture/stoke-park-estate>

Please use this activity pack as you explore the trail and Stoke Park

Things to take with you:

- ☐ A small sandwich bag
- ☐ A paint brush
- ☐ A small pot
- ☐ Water
- ☐ Paper

1) The Hedgehog – draw a picture of the types of food which a hedgehog eats.

Can you find anything to draw around to help you?



Question: Can you guess how many spines a hedgehog has?

2) The Snake – make a scaly snake using small leaves



Question: How many eggs can a grass snake lay?

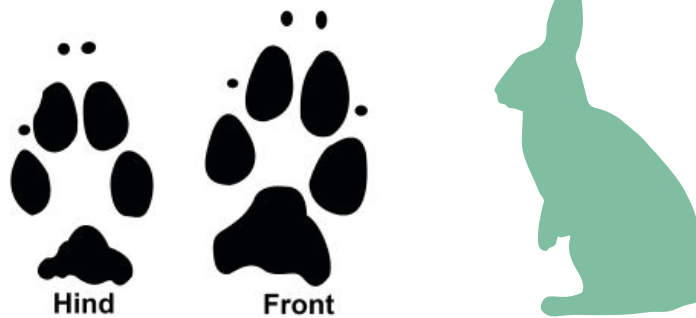




Avon

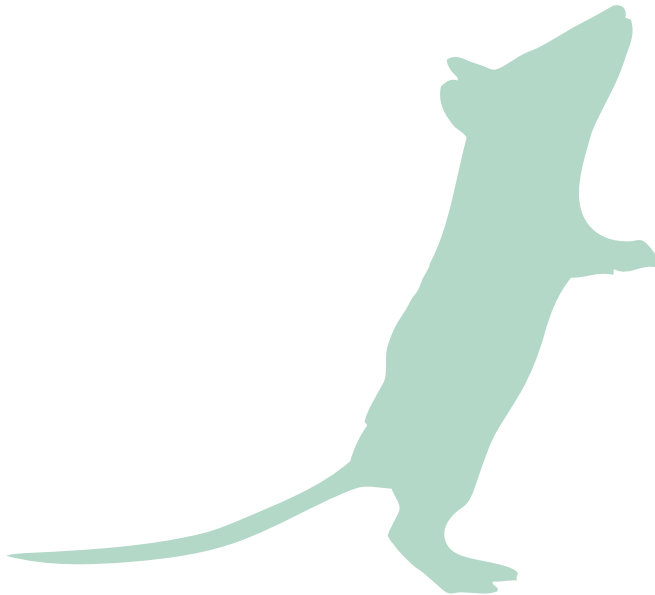


3) Rabbit Warren – find some mud to make some woodland paint. Mix the mud with water to make a paste, and use the paste to paint some rabbit paw prints. If you do not have a paintbrush make some of your own mudfinger prints!

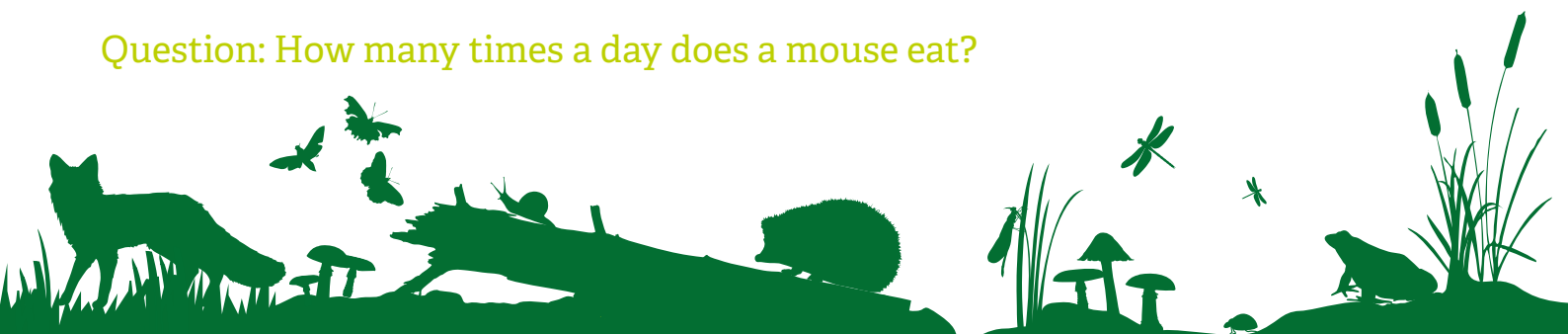


Question: What are the names for male and female rabbits?

4) The Mouse - How many animal prints can you find on the paths? Can you make a trail of your own using natural materials for someone to follow?



Question: How many times a day does a mouse eat?





Avon



5) The Fox and the snail - Can you find a striped (banded) snail in the woods?
Can you make a snail picture using twigs to make the spirals?



Question: What is a foxes home called?



6) The Owls – Can you collect a small bag of feathers in the woods and use them to make an owl picture in the woods or at home?



Question: Can you guess how many degrees an Owl can turn its head?





Avon



Answers



Question 1 – Between 5000-7000

Question 2 – Up to 40 eggs

Question 3 – Buck – Male, Doe – Female

Question 4 – 15–20 times a day

Question 5 – Den

Question 6 – 270 degrees



MY NEIGHBOURHOOD

This trail was developed in partnership with Horfield and Lockleaze Neighbourhood Partnership, Lockleaze Neighbourhood Trust and Community Volunteer Ruth Revell



The Southern Co-operative

