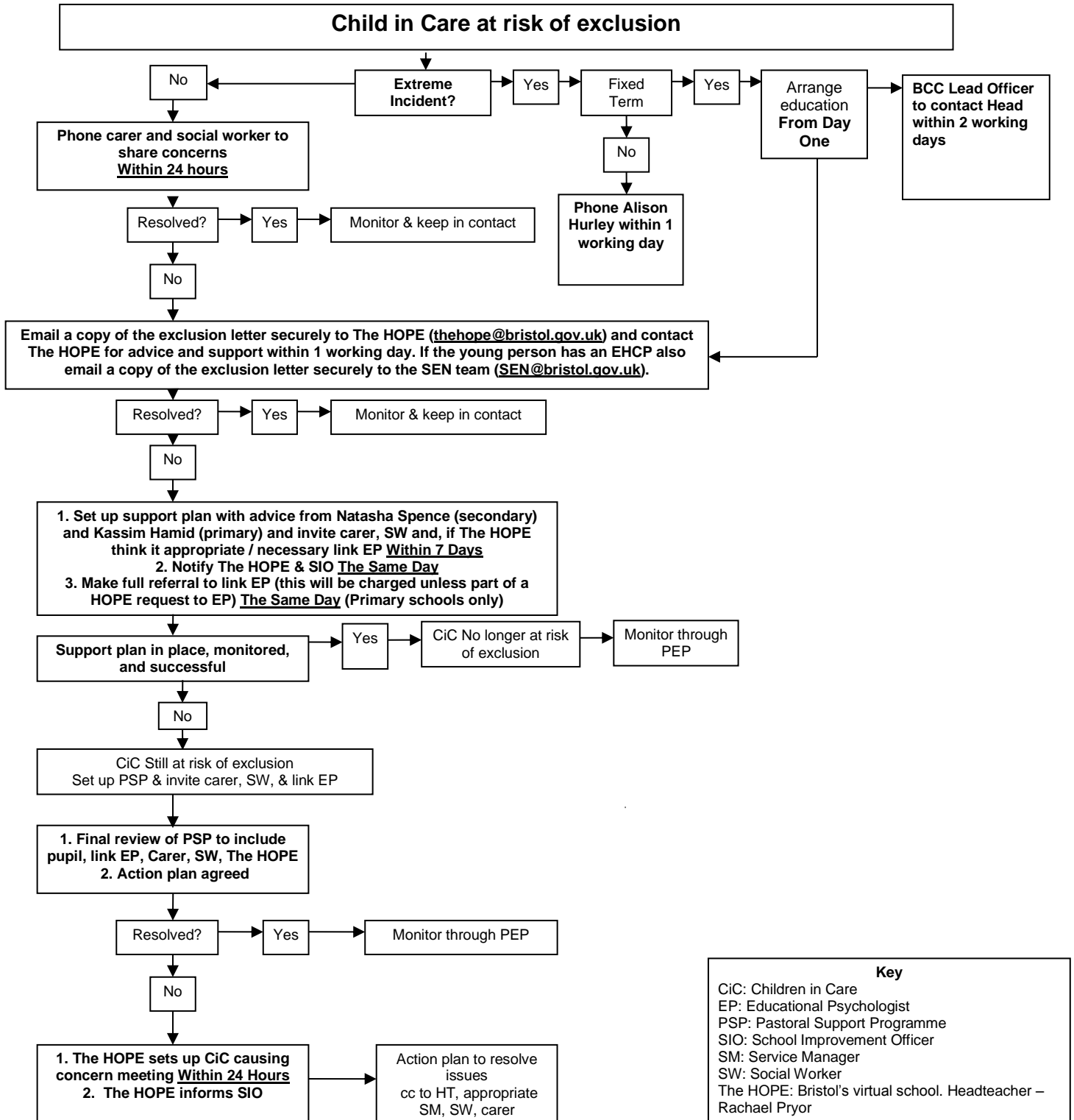


Process for reducing Fixed Term Exclusion of Children in Care



Key

- CiC: Children in Care
- EP: Educational Psychologist
- PSP: Pastoral Support Programme
- SIO: School Improvement Officer
- SM: Service Manager
- SW: Social Worker
- The HOPE: Bristol's virtual school. Headteacher – Rachael Pryor