

# Street bins

This page refers specifically to litter bins on the highway. For household and commercial waste guidance, see the separate *Waste Guidance*.

Bins will be required at new bus stops and outside local amenities and leisure uses. Management of the bins and their emptying will need to be agreed with the landowner or Bristol Waste. See also the Waste Guidance section for details of on-street bin collection.

Where bins are to be provided, they should coordinate with the surrounding environment. Designers must ensure vandal proof and hard wearing materials are chosen (for example, steel can be polished and aluminium anodised to provide greater damage resistance). See the Palette of Materials section for approved bin types.

All bins are to be fitted with stub plates for cigarettes.

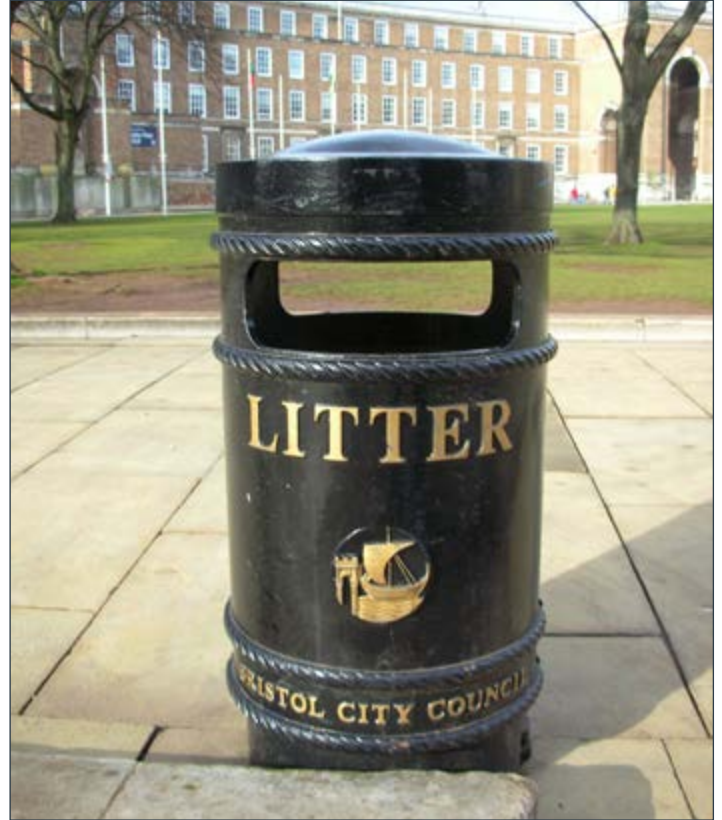


Fig 1: Street bin, College Green