



Bristol Pharmaceutical Needs Assessment

2025-28

Table of Contents

1. Executive Summary.....	3
2. Introduction.....	8
2.1. Developing the pharmaceutical needs assessment.....	8
2.2. Pharmaceutical providers.....	9
2.3. The scope of this PNA.....	10
2.4. Pharmaceutical Services	12
2.4.1. Essential services	12
2.4.2. Advanced services	14
2.4.3. National Enhanced Services	17
2.4.4. Locally commissioned services	17
3. Overview of Bristol	20
3.1. Considerations for Bristol	20
3.1.1. Impacts of tourism.....	20
3.1.2. Prisons.....	20
3.1.3. The Port of Bristol	20
3.1.4. Students	21
3.2. Population.....	21
3.2.1. Ethnicity.....	22
3.2.2. Religion.....	24
3.2.3. Disability.....	24
3.2.4. Car ownership	24
3.3. Deprivation.....	25
3.4. Population growth	28
3.4.1. Growth in older population age groups	29
3.4.2. Housing developments	29
4. Health and Wellbeing in Bristol	32
5. Current pharmacy provision and dispensing activity in Bristol	33
5.1. Access to pharmacies	33
5.2. Travel Time Analysis	34
5.3. Dispensing activity	38
6. Provision of pharmaceutical services by locality area	39

6.1.	Localities used for analysis	39
6.2.	Locality Profiles	40
6.2.1.	North and West Locality	40
6.2.2.	Inner City and East Locality	44
6.2.3.	South Locality.....	48
7.	Public engagement in pharmaceutical needs assessments	53
7.1.	Survey of residents	53
7.2.	Consultation on the draft PNA.....	53
8.	Results of the public consultation	55
9.	Conclusion.....	57
	Necessary services: statement of any gaps in current provision.....	57
	Necessary services: statement of any gaps in future provision.....	57
10.	Table of Figures	58
11.	Table of Tables	60
	Appendix I: Locality health needs	61
	Appendix II: Travel time maps	65
	Appendix III: Pharmacy details	70
	Appendix IV: Results of survey	75
	Appendix V: BNSSG PNA Steering Group	82
	Appendix VI: Consultation Report.....	83

1. Executive Summary

Bristol Health and Wellbeing Board has a statutory responsibility to assess the needs for pharmaceutical services in its area every 3 years. The last assessment was published in 2022.

The Pharmaceutical Needs Assessment (PNA) assesses how well existing services meet health needs for pharmaceutical services. It must identify gaps and highlight priorities for future developments. This Pharmaceutical Needs Assessment (PNA) reviews current pharmaceutical service needs and considers future changes based on existing service levels. Any changes during the PNA period may require a supplementary statement and further analysis to assess potential service gaps.

It will be used by NHS England to inform decisions on future pharmaceutical commissioning intentions and when they consider applications for new or relocated premises. The NHS Bristol, North Somerset and South Gloucestershire Integrated Care Board (BNSSG ICB) and Bristol City Council may also use it when commissioning services.

There are three localities in Bristol (Inner City and East; North & West Bristol and South Bristol) which have been used to assess pharmaceutical need. There are 73 community pharmacies in Bristol, six fewer than in the 2022-2025 PNA. There are 15.1 community pharmacies per 100,000 population in Bristol, slightly lower than the South West rate of 15.5.

Key findings

Analysis for Bristol shows that all of the Bristol population is within a 10-minute rush hour drive to a pharmacy and can access a pharmacy within a 20-minute weekday morning public transport journey. The majority of the population (99.7%) is also within 1-mile walking distance (1.6km, approximately a 20-minute walk) of a pharmacy.

There are 1,617 residents who have a walk further than 1 mile. This area is classified as urban city and town and is within the South Bristol locality in the Broomhill Road area in the east part of Brislington. The nearest pharmacy is approximately 1.5 miles (2.5km)

away, approximately 30 minutes walking and within 20 minutes by car. The Steering Group does not consider this to be a gap for the purposes of this PNA.

Locality variations

The North & West locality has the most pharmacies (27). Inner City and East has 24 pharmacies and South Bristol has 22 pharmacies.

Pharmacy Coverage

Across Bristol, there are 15.1 pharmacies per 100,000 population which is less than the South West rate of 15.5.

The rates for each locality per 100,000 Bristol population are:

- North & West – 14.4 (below Bristol average)
- Inner City & East – 17.4 (above Bristol average)
- South – 14.2 (below Bristol average)

There are 39 independent pharmacies in Bristol, more than half of all Bristol pharmacies. This has provided a level of resilience where national pharmacy groups have disinvested. There are 12 independent pharmacies in Inner City & East, 16 in North & West and 11 in South Bristol.

Opening Hours

Twelve pharmacies in Bristol are open 7 days per week, 3 in North & West, 5 in Inner City & East and 4 in South. Forty seven are open 6 days a week, 19 in North & West, 13 in Inner City & East and 15 in South. Fourteen are open only 5 days a week, 5 in North & West; 6 in Inner City & East and 3 in South Bristol.

Nine pharmacies are open past 18:30 hours, one on North & West, three in Inner City & East, five in South, none in North & West Bristol. There are no pharmacies in Bristol open before 8am.

Four pharmacies in Bristol provide extended opening hours of between 72 and 100 hours, two in Inner City & East (Easton and St Philips Causeway), two in South Bristol (Bedminster and Whitchurch).

All three localities in Bristol have at least one pharmacy open on Sundays.

Items dispensed per head

Fourteen items are dispensed per head in Bristol, 12.7 in North & West, 14.7 in Inner City & East and 15.3 in South. This is less than the rate for South West England (17.1) and for England (19.3) which perhaps reflects the younger population of Bristol.

Survey Results

Healthwatch conducted an online survey on behalf of the Health and Wellbeing Board in support of this PNA (section 7.1). A total of 109 responses were received for Bristol; the following is a summary of the results. All results can be found in Appendix IV.

- **Frequency of visits** - 42% of respondents reported using a pharmacy less than once a month, 31% once a month, 21% 2 to 3 times a month, and 5% once a week.
- **Time of day when visiting pharmacy** - The most convenient time selected (52%) was Monday to Friday - afternoons, mornings and early evenings (before 7pm). 39% chose Saturday morning and 19% chose Sunday afternoon. The least chosen option (15%) was Monday to Friday after 7pm. Respondents were able to select more than one option.
- **Travel methods** - Again respondents could select more than one option. 72% reported that they walk, 42% drive and 10% take a bus.
- **Acceptable travel times** - The majority (46%) considered that less than 20 minutes was an acceptable travel time, and 16% less than 30 minutes.

Conclusion

Given the findings of this needs assessment, the Steering Group is satisfied that Bristol has adequate coverage of essential pharmaceutical services through community pharmacies.

This conclusion is reached based on travel time analysis using car driving times, public transport and walk times. Also, the findings of the survey, which reflect that the majority of respondents find a 20 minute travel time acceptable.

Consultation Results

In addition to the survey, a formal public consultation on the draft PNA also took place from 1st of July to 31st of August 2025 (section 7.2).

There were nineteen responses to the Bristol PNA consultation, ten on behalf of organisations considered statutory consultees and eight from individual residents (one did not respond to the question). Some respondents raised concerns relating to areas that fall outside the legislative remit of the PNA as defined by the NHS (Pharmaceutical Services and Local Pharmaceutical Services) Regulations 2013. These concerns did not necessitate amendments to the conclusions of the PNA, but have been shared with the BNSSG Integrated Care Board and the Southwest Commissioning Support Hub as commissioners of community pharmacies as well as other partner organisations for consideration and further action.

Based on the consultation findings (section 8.), the Bristol PNA Steering Group do not feel the need to alter the findings and recommendations of this report, but acknowledge the concerns raised around about availability and the user experience of community pharmacies. However, while important and pertinent, they fall outside the statutory remit of the PNA, which is governed by the NHS (Pharmaceutical Services and Local Pharmaceutical Services) Regulations 2013.

A perspective from the Bristol Health & Wellbeing Board

Over the course of the last year, Bristol Health and Wellbeing Board has received a number of representations from the public, GPs and local councillors about the closures of pharmacies in their area and the resulting impact on prevention and inequalities.

Local solutions in terms of pharmacy have been presented, with community pharmacists expressing interest in taking up vacated premises. However, within the strict national regulations and criteria under which pharmacy provision operates, despite the pharmacy closures, in some cases it has not been possible to take advantage of these opportunities. This has proved frustrating to communities and has been difficult to explain to the public.

It has become clear to the Health and Wellbeing Board that the regulatory framework that the pharmacy needs assessment works within, limits consideration of factors other than the geographical distribution of pharmacies when considering gaps in pharmacy provision. The Board has written to the Secretary of State requesting that they consider allowing greater weight to be given to the voices of local populations in decisions about pharmacy provision.

2. Introduction

The Health and Social Care Act (2012) transferred the responsibility to develop and update pharmaceutical needs assessments (PNAs) to Health & Wellbeing Boards from April 2013.¹

This document assesses the need for pharmaceutical services in Bristol and covers the period 1 October 2025 to 30 September 2028 and supersedes all previous PNAs and supplementary statements published on the council website.

Any changes to needs after the publication date (1st October 2025) will be reviewed and supplementary statements will be published alongside this document on the Council website.

The PNA is designed to assist NHS England, the Integrated Care Board and the Local Authority in commissioning services from both existing and new potential providers through a systematic process of identifying needs and seeking to address them. It will also be used to inform the consideration of applications to join the pharmaceutical list. However, if a need is not identified in the PNA an application can still be made if the applicant can demonstrate granting it would result in significant benefits.

This needs assessment focuses on services provided by the 73 community pharmacies in Bristol that exist as of the 19 May 2025.

2.1. Developing the pharmaceutical needs assessment

This PNA has been produced in accordance with the NHS (Pharmaceutical Services and Local Pharmaceutical Services) Regulations 2013 and follows the information provided by the Department of Health and Social Care to support Health and Wellbeing Boards implement their duty to produce the PNA.¹

¹ [The National Health Service \(Pharmaceutical and Local Pharmaceutical Services\) Regulations 2013](#)

A Steering Group was formed to guide and review the PNA. A copy of the membership of the Steering Group can be found in Appendix V: BNSSG PNA Steering Group

The group was chaired by a Consultant in Public Health and included broad representation from key stakeholders.

Local mapping of pharmacy locations and travel time analysis was produced with SHAPE (Strategic Health Asset Planning and Evaluation tool) and Earthlight.

Information on pharmacy locations, opening times and essential/advanced services activity was provided by NHS England and incorporated following the public consultation.

ONS mid-year population estimates for 2023 were used unless other sources are indicated.

Some data was only available at pre-2015 electoral ward level or Lower Super Output Area (LSOA), both of which are not coterminous with localities, therefore these rates may over or under-represent the area.

Access to services was assessed using PNA localities as set out in the regulations. This PNA uses very similar boundaries to those used in the last PNA as they best reflect how residents access pharmaceutical services or how local health services are structured. PNA localities are described in detail in the locality profiles in Section 6.

2.2. Pharmaceutical providers

NHS England maintains a number of lists of providers of pharmaceutical services for each Health and Wellbeing Board area. Those lists are of:

Pharmacy contractors (healthcare professionals working for themselves or as employees who practice in pharmacy, the field of health sciences focusing on safe and effective medicines use). Within this category there are the following groups:

Community pharmacies, which mainly provide pharmaceutical services in person from premises in high street shops, supermarkets or adjacent to doctors' surgeries.

Most community pharmacies open for at least 40 hours per week, however some are required to be open for a minimum of 72 hours per week, so-called 100 hour pharmacies.

Distance-selling pharmacies (DSP), which provide pharmaceutical services remotely from the patient: no essential services may be provided face-to-face on the pharmacy's premises. Most DSPs receive their prescriptions by electronic transfer, and the medication will be delivered to the patient's home. There is currently one distance-selling pharmacy in Bristol and this facility is not within the scope of this PNA. It should however be noted that this is an option for obtaining pharmacy services and there are approximately 411 across England. ²

Local pharmaceutical services (LPS) contractors (similar to pharmacy contractors, but the services they provide may be more tailored to the area they serve). There are currently no LPS contractors in Bristol.

Dispensing appliance contractors (DAC) (providers who supply, on prescription, appliances such as stoma and incontinence aids, dressings, bandages etc.; they cannot supply medicines). Free home delivery is part of the requirements of the dispensing essential service for 'specified appliances' which includes catheters, catheter accessories and maintenance solutions, laryngectomy or tracheostomy appliances. There are currently no DAC in Bristol.

Dispensing doctors (medical practitioners authorised to provide drugs and appliances in designated rural areas known as "controlled localities".) There are no dispensing GP practices in Bristol.

2.3. The scope of this PNA

This PNA encompasses pharmaceutical services provided by pharmacy contractors within Bristol. This Pharmaceutical Needs Assessment (PNA) evaluates the current pharmaceutical service needs of the population and considers projected changes in

² NHS Business Services Authority. "Contractor Details" NHS Business Services Authority Open Data. Accessed 26/05/2025. URL:<https://opendata.nhsbsa.net/dataset/contractor-details>

need over its duration, based on the existing level of service provision (supply) at the time of assessment; Any changes in provision over the duration of this PNA would require the completion of a supplementary statement and may also require further analysis to determine whether the changes result in the emergence of a gap in pharmaceutical services.

There are aspects of pharmaceutical services that are beyond the scope of this PNA including some areas in which the Integrated Care Board (ICB) for Bristol, North Somerset, South Gloucestershire (BNSSG) has an interest. These include: prisons, secondary, and tertiary care sites, where patients may obtain pharmaceutical services not covered by this assessment; and advice to clinicians and/or patients via specialist pharmacists.

Unlike for GPs, dentists and optometrists, NHS England does not hold contracts with most pharmacy contractors (the exception being Local Pharmaceutical Services contractors). Instead, as noted above, they provide services under terms of service set out in legislation.

For the purposes of this PNA we consider a 'necessary' service to be the essential services. All other advanced, enhanced and locally-commissioned services are not considered necessary but secure improvements or better access to pharmaceutical services.

It is noted that the gap analysis is based on formally contracted services and that ongoing temporary closures may influence future service provision if sustained or widespread. These temporary closures are not classified as formal changes under the PNA regulations and therefore are not included in this assessment. Should any of these closures become permanent, there is potential for a gap in service provision to arise, which would require further evaluation and response.

2.4. Pharmaceutical Services

Community pharmacies provide services under a national contractual framework with three tiers of services: Essential, advanced and enhanced. Each community pharmacy must provide essential services in order to be entered onto the pharmaceutical list.

2.4.1. Essential services

All community pharmacies and distance selling pharmacy must provide these services.

There are nine essential services:

- Dispensing medicines
- Dispensing appliances
- Repeat Dispensing and eRD
- Disposal of unwanted medicines
- Discharge Medicines Service
- Promotion of healthy lifestyles (Public Health)
- Healthy Living Pharmacies
- Signposting
- Support for self care
- **Dispensing of prescriptions and appliances**– The supply of medicines and appliances ordered on NHS prescriptions, together with information and advice, to enable safe and effective use by patients and carers, and maintenance of appropriate records. Also, the urgent supply of a drug or appliance without a prescription at the request of a prescriber.
- **Repeat Dispensing and eRD** - At least two thirds of all prescriptions generated in primary care are for patients needing repeat supplies of regular medicines, most of which are carried out via electronic Repeat Dispensing (eRD).
- **Disposal of unwanted medicines** – Acceptance of unwanted medicines which require safe disposal from households and individuals.

- **Discharge medicines service** - By referring patients to community pharmacy on discharge with information about medication changes made in hospital, community pharmacy can support patients to improve outcomes, prevent harm and reduce readmissions.
- **Promotion of healthy lifestyles (Public Health)** – The provision of opportunistic healthy lifestyle advice to patients receiving prescriptions who appear to have particular conditions, and pro-active participation in national/local campaigns, to promote public health messages to general pharmacy visitors during specific targeted campaign periods. It was agreed that pharmacy owners would only be required to engage in a maximum of two national health campaigns and two Integrated Care Board selected campaigns in 2025/26 (previously a maximum of six campaigns).
- **Healthy Living Pharmacy**- The Healthy Living Pharmacy (HLP) framework aims to achieve a consistent provision of a broad range of health promotion interventions through community pharmacies to meet local need, improving the health and wellbeing of the local population and helping to reduce health inequalities. Pharmacy owners had to ensure they were compliant with the HLP requirements from 1st January 2021, and the Distance Selling Pharmacy (DSP) website requirements had to be complied with from 1st April 2021.
- **Signposting** – The provision of information to people visiting the pharmacy, who require further support, advice or treatment which cannot be provided by the pharmacy but is available from other health and social care providers or support organisations who may be able to assist the person. Where appropriate, this may take the form of a referral.
- **Support for self-care** – The provision of advice and support by pharmacy staff to enable people to derive maximum benefit from caring for themselves or their families.

Note: where a pharmacy contractor chooses to supply appliances as well as medicines, the requirements of the appliance services also apply.

2.4.2. Advanced services

Pharmacies and dispensing appliance contractors may choose to provide these services subject to certain requirements set out in the Secretary of State Directions. There are currently nine advanced services within the NHS Community Pharmacy Contractual Framework (CPCF), also known as the 'pharmacy contract':

- Pharmacy First Service
- New Medicines Service
- Influenza (flu) Vaccination Service
- Stoma Appliance Customisation (SAC)
- Appliance Use Review (AUR)
- Hypertension case finding service
- Smoking Cessation Service (SCS)
- Pharmacy Contraception Service
- Lateral Flow Device Service (LFD service)

Pharmacy First – This free NHS service allows people to get quick access to healthcare advice as they can walk into a pharmacy and access the service, removing the potential delay of having to wait for a GP appointment.

The person will be offered a consultation with a pharmacist in a private consultation room, with some pharmacies also offering the service remotely as a video consultation. A person can also be electronically referred by certain healthcare professionals including a person's GP to a pharmacy of their choice for the service.

The service supports the following seven conditions:

- Earache (aged 1 to 17 years)
- Impetigo (aged 1 year and over)
- Infected insect bites (aged 1 year and over)
- Shingles (aged 18 years and over)

- Sinusitis (aged 12 years and over)
- Sore throats (aged 5 years and over)
- Urinary tract infections (UTIs) in women (aged 16 to 64 years)

The pharmacist will provide advice and, if clinically necessary, a prescription medicine to treat the condition. An electronic message will be sent to the person's GP surgery so their GP health record can be updated.

Should the pharmacist be unable to help, the person will be directed to their GP surgery or other health professional as appropriate.

- **New medicine service (NMS)** – The new medicines service (NMS) supports patients with long-term conditions, who are taking a newly prescribed medicine, to help improve their adherence and get the most from the medicine. It focuses on people with specific conditions including:
 - Asthma and COPD
 - Type 2 diabetes
 - Antiplatelet or anticoagulation therapy
 - Hypertension

In March 2025 it was announced that from October 2025, the service will be expanded to include depression within the conditions and associated medicines covered by the service³.

- **Influenza vaccination service** – The provision of seasonal influenza vaccinations to patients in at-risk groups, to provide more opportunities for

³ Department for Health and Social Care press release, 31 March 2025 available at <https://www.gov.uk/government/news/new-services-for-patients-under-record-pharmacy-funding-deal> (accessed 26/05/2025)

eligible patients to access vaccination with the aim of sustaining and maximising uptake.

- **Stoma appliance customisation service** – The modification to the same specification of multiple identical parts for use with a stoma appliance, based on the patient’s measurements (and, if applicable, a template) to ensure proper use and comfortable fitting, and to improve the duration of usage.
- **Appliance use review service (AUR)** – The improvement of patient knowledge, concordance and use of their appliances through one-to-one consultations to discuss use, experience, storage and disposal, and if necessary, making recommendations to prescribers.
- **Hypertension Case-Finding Service** - The service aims to help prevent cardiovascular disease by identifying people aged 40 years or older with high blood pressure who have previously not had a confirmed diagnosis of hypertension. At the request of a general practice, the pharmaceutical provider can undertake ad hoc normal and ambulatory blood pressure measurements; provide 24-hour ambulatory blood pressure monitoring (ABPM) for those with high blood pressure readings and promote healthy behaviours to patients.
- **Smoking Cessation Service** – The provision of evidence-based smoking cessation support for 12 weeks including follow up after patient discharge from hospital. NHS trusts can refer patients to a pharmacy of their choice so they can receive continuing treatment, advice and support with their attempt to quit smoking.
- **Pharmacy Contraception Service (PCS)** – Since December 2023 this advanced national service allows the initiation and on-going supply of oral contraception from community pharmacies, offering greater choice from where people can access contraception services. It is also hoped that this will create additional capacity in primary care and sexual health clinics (or equivalent) to support meeting the demand for more complex assessments. In March 2025 it was announced that from October 2025, the service will be expanded to include the

provision of Emergency Hormonal Contraception for women of all ages, which is likely to affect the current local services commissioned by local authorities. At the time of writing no further details were available⁴.

- **Lateral Flow Device (LFD) Service** - Eligible patients aged 12 and over that are at risk of getting seriously ill from COVID-19 are potentially eligible to receive free LFD test kits from pharmacies. A full list of eligible risk factors can be found in NICE guideline on risk factors for progression to severe COVID-19⁵ A service finder on the NHS website, lets members of the public and healthcare professionals search for a pharmacy that offers the free COVID-19 rapid LFD test supplies as part of the NHS LFD Supply Service.

2.4.3. National Enhanced Services

Enhanced services are also directly commissioned by NHS England. An enhanced service allows the agreement of standard conditions nationally, while still allowing the flexibility for local decisions to commission the service to meet local population needs, as part of a nationally coordinated programme.

There are currently two NES commissioned; These are the COVID-19 Vaccination Service and the Respiratory Syncytial Virus (RSV) and Pertussis Vaccination Service (at the time of writing only available in some parts of England).

2.4.4. Locally commissioned services

Since April 2013, services other than the essential services have been commissioned from community pharmacies by a number of organisations.

⁴ Department for Health and Social Care press release, 31 March 2025 available at <https://www.gov.uk/government/news/new-services-for-patients-under-record-pharmacy-funding-deal> (accessed 26/05/2025)

⁵ National Institute for Clinical and Health Excellence (NICE) Guidance Technology Appraisal Guidance TA 878 (section 5): [Nirmatrelvir plus ritonavir, sotrovimab and tocilizumab for treating COVID-19](#) (accessed 26/05/2025)

Locally-commissioned services are commissioned by Bristol Council or the Integrated Care board for Bristol, North Somerset and South Gloucestershire (BNSSG ICB) in response to local health needs that are identified through the JSNA (Joint Strategic Needs Assessment) and the health priorities identified through relevant strategies, such as the Joint Local Health and Wellbeing Strategy and the Healthier Together Joint Forward Plan 2025-2030⁶.

Locally commissioned services by BNSSG Integrated Care Board

A number of Patient Group Directions (PGD) are commissioned to support the delivery of Pharmacy First and the management of other minor ailments where the pharmacist can supply some prescription-only treatments.

A full list of patient group directions is available at [Community Pharmacy Minor Ailment PGDs \(Remedy BNSSG ICB\)](#). In May 2025 the PGDs include:

- Chloramphenicol for conjunctivitis in under 2s
- Hydrocortisone for mild skin conditions
- Otomize for otitis externa

Specialist Medicines Enhanced Service

A number of pharmacies across BNSSG are providing the local enhanced service for the 'Availability of Specialist Medicines'. By providing this, pharmacies are required to ensure that the specialist medicines are available at all times during their opening hours and on any bank or public holidays on which they open. The specialist medicines (used for example in palliative care or to treat severe infections) are often required at short notice and may not normally be stocked by pharmacies.

Locally commissioned services by Bristol Council

- Young adult Sexual Health Services (including condoms, emergency hormonal contraception and chlamydia/gonorrhoea test kit for women aged 16-24). Inclusion

⁶ [BNSSG Healthier Together Joint Forward Plan 2025-2030](#) -accessed 26/05/2025

of emergency hormonal contraception in the new national pharmacy contract will enable the opportunity for more equitable access to emergency contraception and a move away from regional variation seen to date.

- Needle and Syringe Exchange Service for injecting drug users is sub-contracted by Bristol Horizons substance use service for Bristol.
- Supervised Consumption Service for opiate substitute treatment with methadone or buprenorphine

3. Overview of Bristol

Bristol is the largest city in the South West, one of the 11 'Core Cities' in the UK and the 8th largest city in England and Wales, outside of London.

3.1. Considerations for Bristol

3.1.1. Impacts of tourism

This assessment takes into account any major population influxes due to events, which may affect access to pharmaceutical services.

Bristol Harbour Festival attracts over 250,000 attendees over a weekend in July and in 2019 it was estimated that 41% (102,500) travelled from outside Bristol. Whilst this is a significant number of visitors, the pharmacies in the boundaries of the city, are able to manage any fluctuation in demand.

Bristol International Balloon Fiesta attracts around 100,000 over a weekend in August, and although Ashton Court is outside the city's boundaries, there are adequate pharmacies in Bedminster and Clifton, which are able to provide a service where needed.

3.1.2. Prisons

HM Prison Bristol is a Category B adult male prison, located in Horfield, with a capacity of approximately 600 individuals. It primarily houses remand (pretrial) and convicted prisoners, with the majority of prisoners staying for less than 12 months. The prison houses its own pharmacy within its grounds, which supplies medicines to prisoners and is not open to the public.

3.1.3. The Port of Bristol

Bristol Port is a key national asset and a major economic driver for the South West region. The Bristol Port Company has more than 600 employees and over 12,000 South West jobs depend on port-based businesses.

3.1.4. Students

In 2022/23 there were 70,920 students registered at the two Bristol universities. Not all of the university students registered live in the Bristol Health and Wellbeing Board area. In the ten years up to 2022/23 university student numbers increased by more than half (51%, +24,000). Overseas students make up more than a quarter (27%) of all students at the two universities - of these, 3% come from EU countries and the remaining 24% come from countries outside of the EU.

In 2021, there were 43,700 full-time students aged 18 and over living in Bristol, making up 9.2% of the total usually resident population (England and Wales 4.1%). This includes all full-time students not just university students.

Students living in Bristol are concentrated in particular areas of the city. More than half (52%) of all full-time students aged 18 and over live in just six wards and account for more than a fifth of the total ward population, including: Central - 8,634 (47%); Clifton Down - 3,363 (29%); Cotham - 3,218 (28%); Hotwells and Harbourside (1,570 (26%); Clifton - 3,062 (24%); Stoke Bishop - 2,692 (21%).

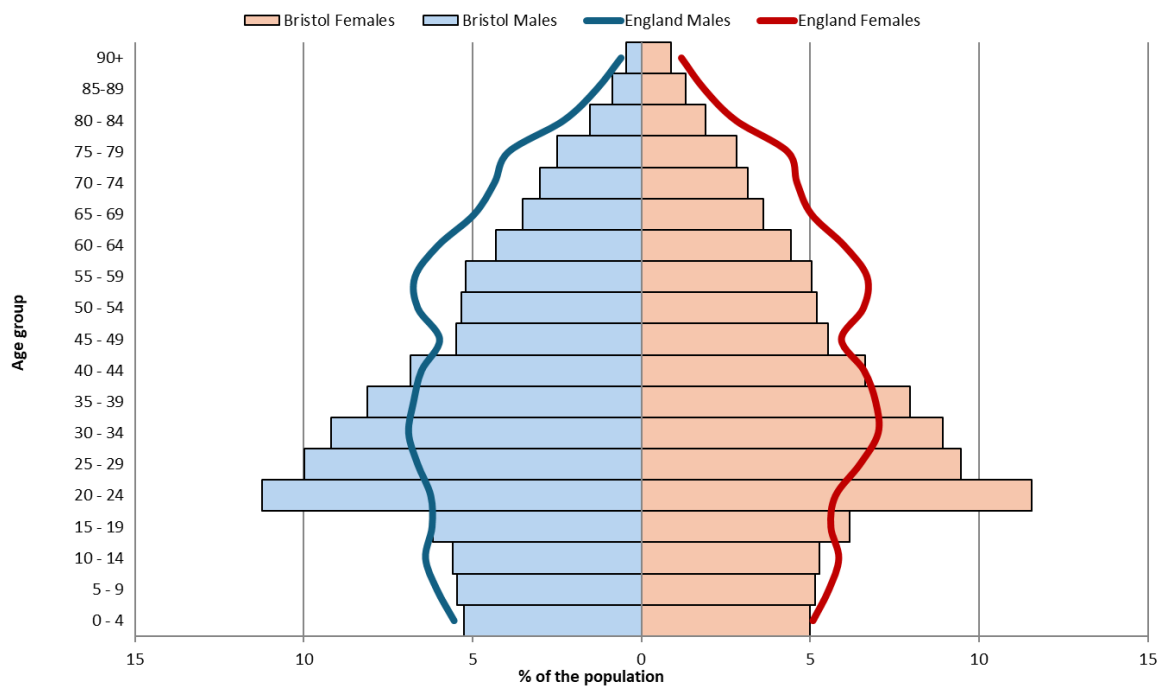
3.2. Population

The population Bristol in 2023 was estimated to be 482,998 (50% male; 50% female)⁷.

The age structure in Bristol is younger, with more young people aged between 20 and 39 years compared to the national average (38% in Bristol, 26% in England). Bristol has a smaller proportion of older people with around one in eight people (13%) aged over 65 years compared to 19% in England. 1.7% of the population are aged over 85 years.

⁷ Office for National Statistics, Mid-year estimates 2020.

Figure 1: Population breakdown by gender for Bristol and England, 2023



Source: ONS Mid-year estimates for 2023

3.2.1. Ethnicity

Coming from a Black and racially minoritised background can impact negatively on your health. This might be because of passive or active discrimination or may be linked to other factors which can include deprivation, poverty, and/or from a genetic predisposition to certain illnesses. Overall, this means that people from some Black and racially minoritised backgrounds have poorer health and shorter life expectancy than the general population.

In the last available census from 2021 the Black and racially minoritised population (all ethnic groups other than white) of Bristol accounted for 18.9% (89,325 people), compared to 6.9% in the South West and 19.0% in England as a whole. Table 1 shows the breakdown of the Bristol population by ethnic group in comparison to the average for England and Wales.

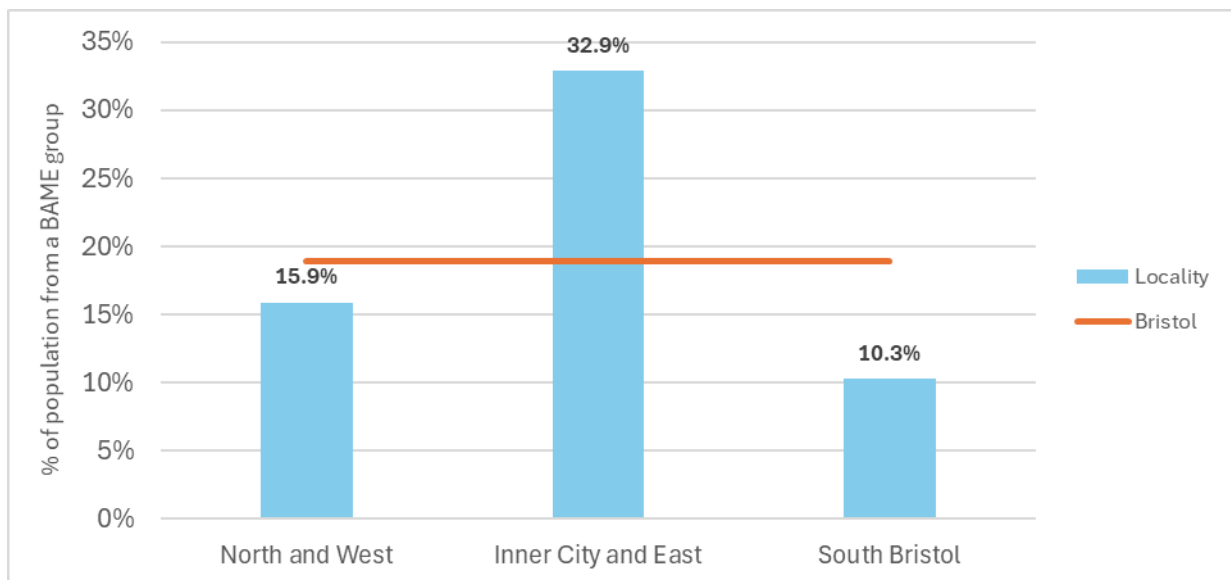
Table 1: Population estimates by ethnic group in Bristol and England and Wales

	Bristol		England	
	Number	%	Number	%
All Groups	472,467	100.0%	56,490,048	100.0%
White	383,142	81.1%	45,783,401	81.0%
Mixed	21,116	4.5%	1,669,378	3.0%
Asian	31,269	6.6%	5,426,392	9.6%
Black	27,890	5.9%	2,381,724	4.2%
Other	9,050	1.9%	1,229,153	2.2%

Source: 2021 Census

Estimates about the Black and racially minoritised population in the three localities suggest that proportions are much higher in Inner City and East and much lower in South locality.

Figure 2: Percentage of the population from a Black and racially minoritised background, 2021



Source: 2021 Census

3.2.2. Religion

In the 2021 census 32% of respondents reported being Christian, 6.7% being Muslim 0.6% being Buddhist, 0.8% being Hindu and 0.3% being Jewish. 51% of people who answered the census question reported not having a religion. Due to the small numbers religion was not assessed at locality level.

3.2.3. Disability

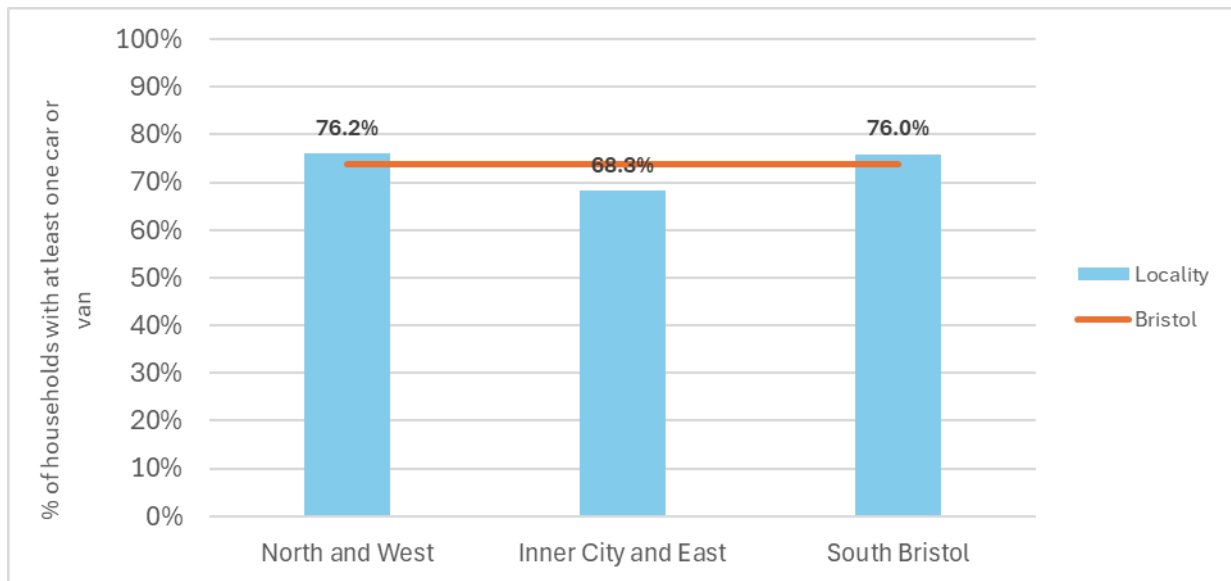
The 2021 Census collected data on whether people had long-term physical or mental health conditions or illnesses and the extent to which they affect day-to-day activities. This provides data on the number of people that would be considered Disabled under the definition of the Equality Act 2010.

Of the total population in Bristol, 6.9% (32,444) had a disability that limited their day-to-day activities a lot and 10.3% (48,715) had a disability that affected their day-to-day activities a little. (Census, 2021). 38% of those severely limited live in South Bristol locality, 34% in North & West locality, and the lowest proportion in the Inner City & East locality (28%).

3.2.4. Car ownership

Bristol has a similar although slightly lower car ownership rate than the National average. Residents in Inner City and East locality have the lowest car ownership, with roughly one third of the households not having access to a car (see Figure 3).

Figure 3: Percentage of households who own a car by locality area, 2021



Source: 2021 Census

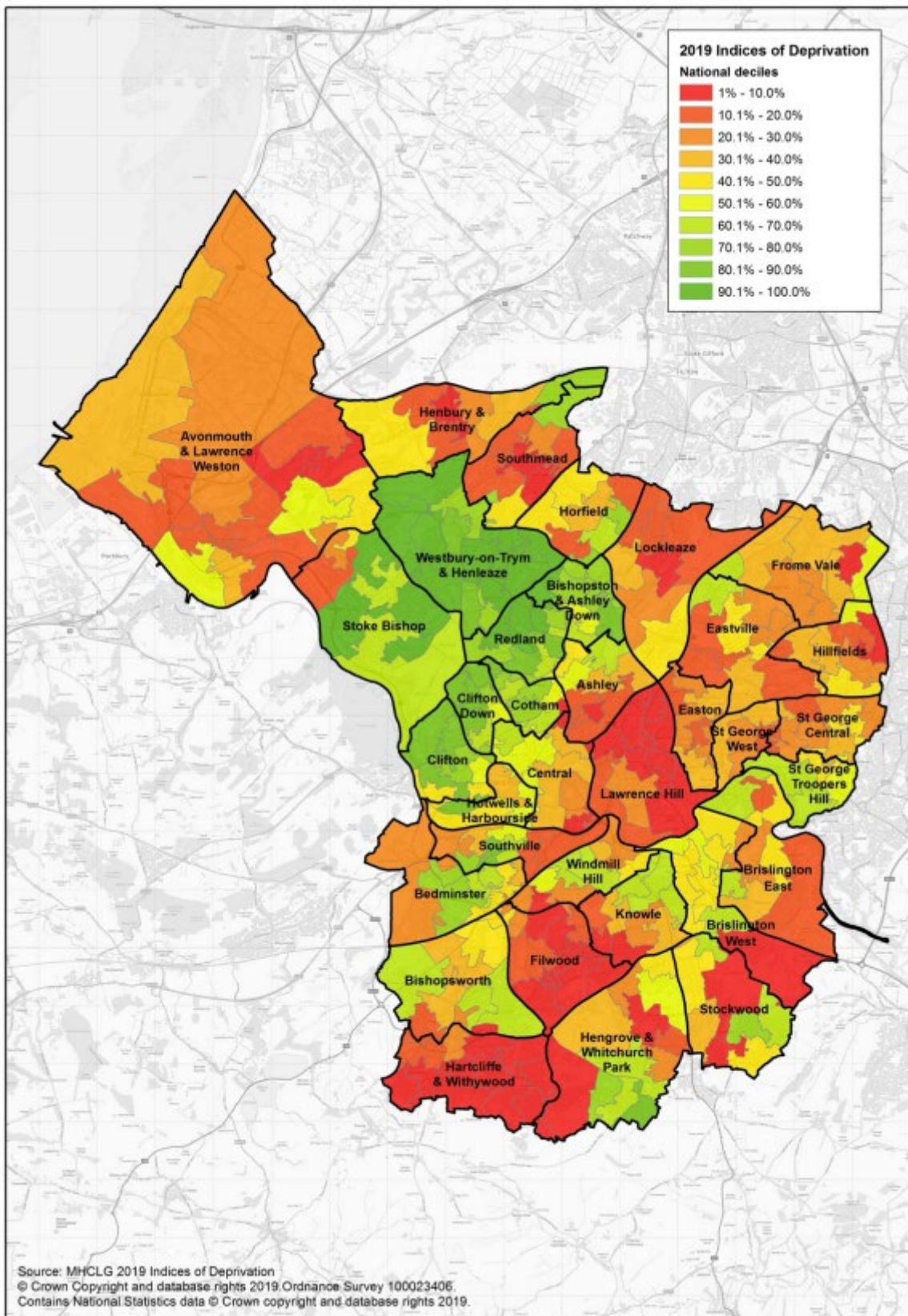
3.3. Deprivation

The indicators used in this section are based on the concept that deprivation consists of more than just poverty. Poverty is not having enough money to get by on, whereas deprivation refers to a general lack of resources and opportunities. The domains used in the Index of Multiple Deprivation 2019 are income, employment, health, education, crime, access to services and living environment.

There are 70,400 people living in the most deprived 10% of Lower Layer Super Output Areas (LSOAs) in England. This represents 15% of all residents living in Bristol.

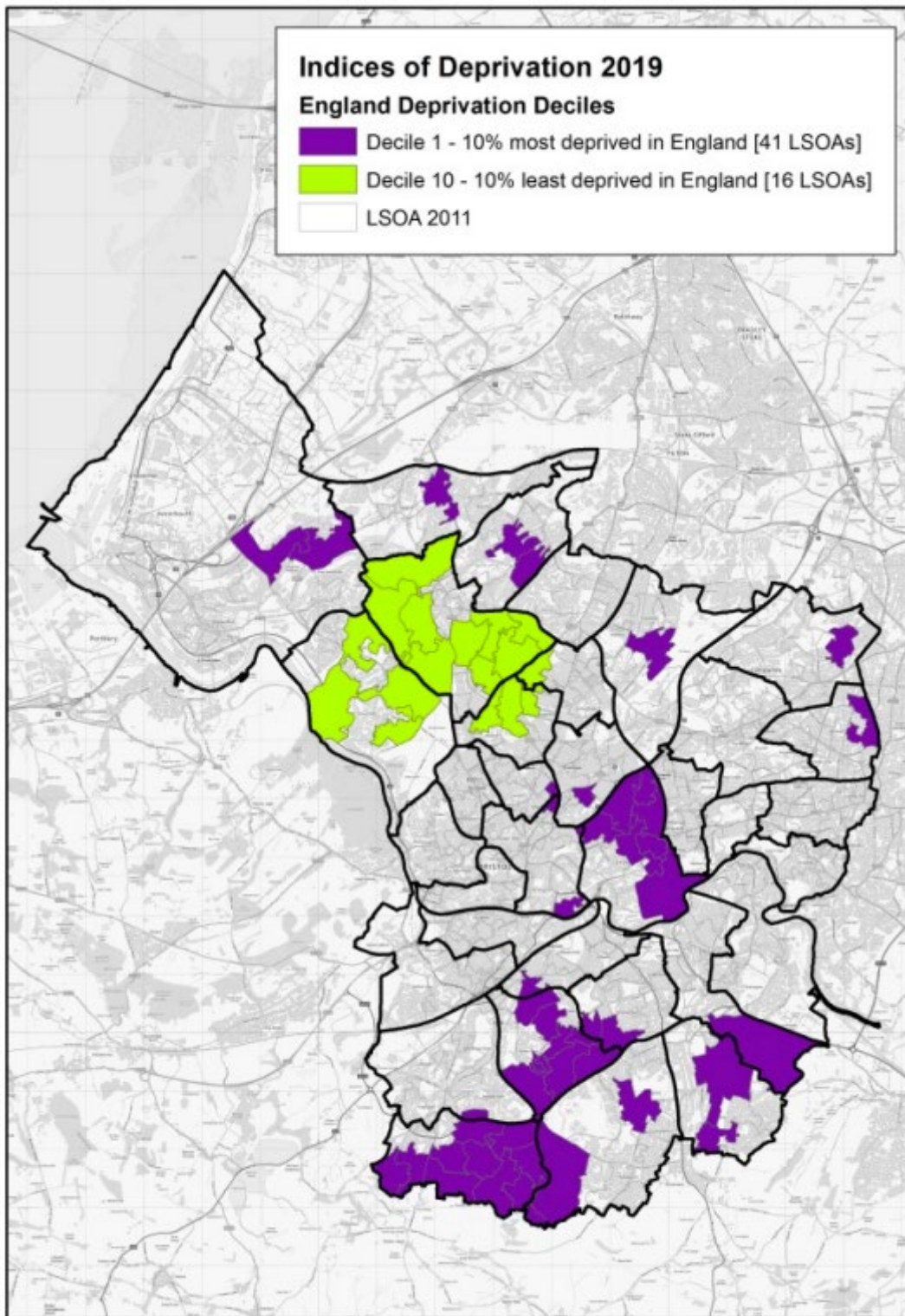
Some areas of Bristol are amongst the most deprived in the country and some within the least deprived. Figure 4 highlights those areas within the least and most deprived 10% of LSOAs in England. Fewer Bristol LSOAs sit within the most deprived 10% in England compared with 2015.

Figure 4: Index of Multiple Deprivation



Source: Department for Communities and Local Government, Indices of Deprivation. 2019 [from BCC Deprivation in Bristol

Figure 5: Least and most deprived areas in Bristol.

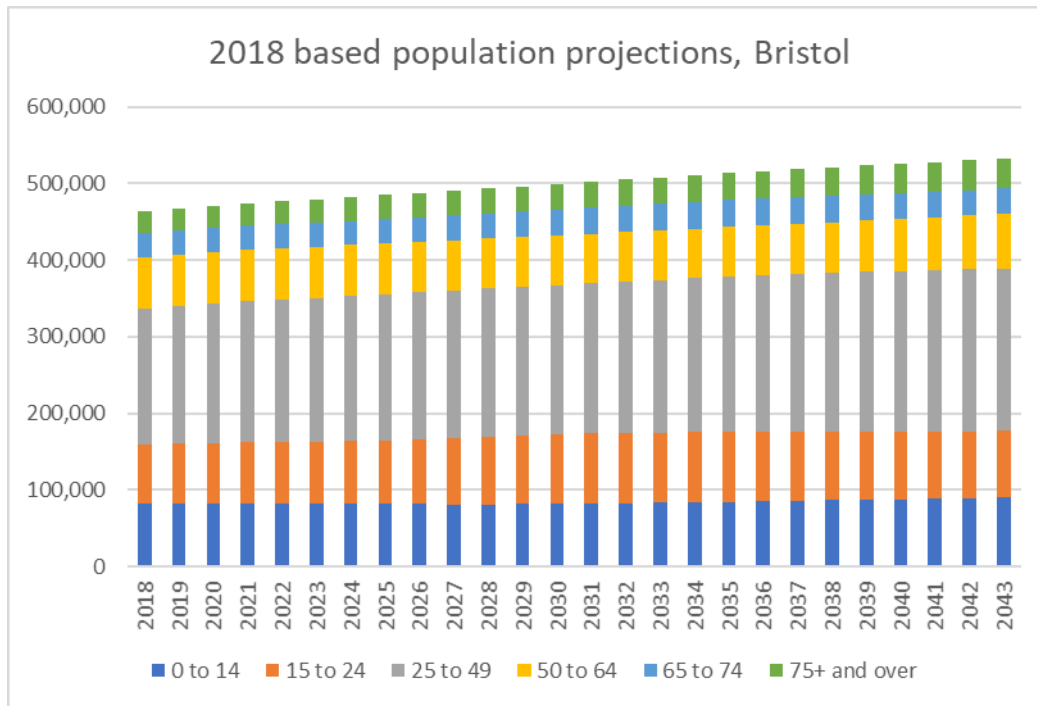


Source: Department for Communities and Local Government, Indices of Deprivation. 2019 [from BCC Deprivation in Bristol 2019 report]

3.4. Population growth

The population of Bristol is predicted to rise from 482,998 in 2023 to 532,716 in 2043, an increase of 10%. All age groups are predicted to rise by 2043, with the highest % increase in the over 75s (30% predicted increase by 2043).

Figure 6: Bristol Population Projections



Source: ONS 2020

Over the 10-year period (2023-2033), Bristol’s population is projected to increase by 24,802 to 493,389 (5.1% increase). Over this time period the main drivers of population growth are expected to be due to natural change (i.e. more births than deaths) rather than migration. The rate of increase is much less than in recent years and some age groups are forecasted to decrease in size. This is shown for the city by broad age bands in Figure .

Figure 7: Age Bands Trends

Age	2023	2028	2033	Change 2023 - 2033	
Age 0-15	86,800	86,400	87,900	1,100	1%
Age 16-24	76,100	83,200	87,100	11,000	14%
Age 25-49	187,500	193,300	199,000	11,500	6%
Age 50-64	67,100	65,200	64,600	-2,500	-4%
Age 65-74	31,500	32,800	35,000	3,500	11%
Age 75+	30,500	32,400	34,200	3,700	12%
All ages	479,600	493,400	507,800	28,200	6%

These are trend-based projections, which mean assumptions for future levels of births, deaths and migration are based on observed levels, over previous 6 years. They show what the population will be if the trends continue.

3.4.1. Growth in older population age groups

Although Bristol is a relatively young city (6.1% of the population are over 75 years old, compared to 9.2% in England), the size of the older population is predicted to rise by 12% between 2023 and 2033, at a slower rate than England overall.

The Office for National Statistics do not provide population projections at a locality level, so population growth in recent years has been analysed to inform possible future growth.

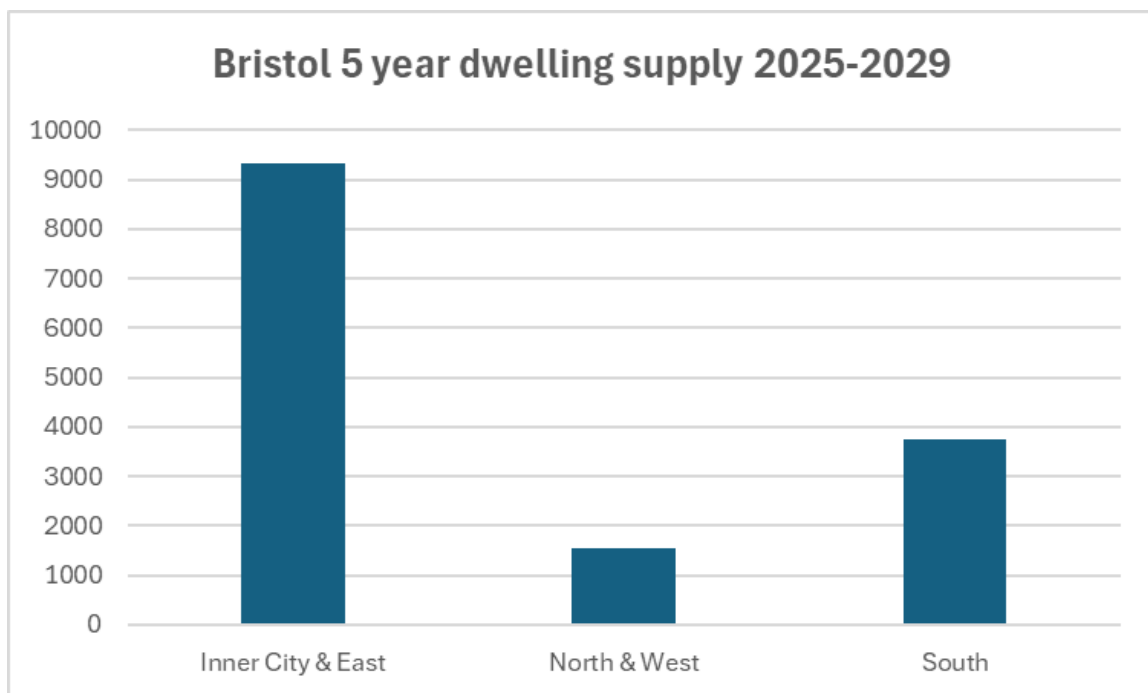
For the years between 2011 and 2022, the over 75 year old population of Bristol increased by 3%. However, within Bristol the older population changed depending upon locality. Inner City & East over 75's population decreased by 3%, North & West increased by 6%, and South increased by 3%.

3.4.2. Housing developments

Bristol City Council has estimated that there is land available for 14,611 dwellings in the next five years (Five Year Housing Supply Assessment, Bristol City Council).

- Inner City and East has the highest availability of 9,329 (64% of the total for Bristol), Central Bristol (3,120) and Lawrence Hill (4,240)
- This is followed by South with 3,735 (26% of total), in particular Southville (1,335)
- North & West has the lowest availability at 1,547 (11% of total) (see Figure 7: Bristol 5 Year dwelling supply 2025- 2029).

Figure 8: Bristol 5 Year dwelling supply 2025- 2029



Source: Strategic Planning BCC

Lawrence Hill and Central wards combined account for 50% of the land availability for 2025 to 2029.

Lawrence Hill land availability is principally at Bristol Temple Quarter (2,920 dwellings) and St Phillips Marsh (659 dwellings). Central ward has 3,120 dwellings available between 2025 and 2029, mainly at Broadmead / Castle Park (1,622 dwellings) and Redcliffe Street (468 dwellings).

Both Lawrence Hill Ward and Central Ward have a number of existing pharmacies, with Inner City and East Locality having the highest number of pharmacies per head of

population in Bristol at 17.4 per 100,000 of the population. All parts of both wards are within a 15-minute walk of a pharmacy.

It is noted that recent trends in the older population of both Lawrence Hill Ward and Central Ward fell between 2011 and 2022, a combined decrease of 309, a 36% decrease.

4. Health and Wellbeing in Bristol

Both males and females born in Bristol can expect to live, on average, below the respective levels for England as a whole. Life expectancy at birth in Bristol was 77.8 years for a male and 82.7 years for a female (2020-2022), while the respective figures for England were 79.3 years and 83.1 years.

The life expectancy gap between the most and least deprived areas in Bristol is 9.9 years for males and 6.9 years for females. At a locality level, life expectancy in Bristol varies. Bristol North & West has the highest life expectancy in Bristol for both males (79.4 years) and females (83.4 years) both being better than Bristol as a whole. Inner City and East and Bristol South localities have lower than average female life expectancy. Bristol's worst male life expectancy is in Inner City and East (76.4 years).

There is wide variation in Healthy Life Expectancy across the city. The most deprived 5th of the population has around 16 fewer years of Healthy Life Expectancy than the least deprived 5th.

The number of years people are living in ill health has a vast range between areas of the city, from 11 years to 31 years for females and from 10 years to 24 years for males.

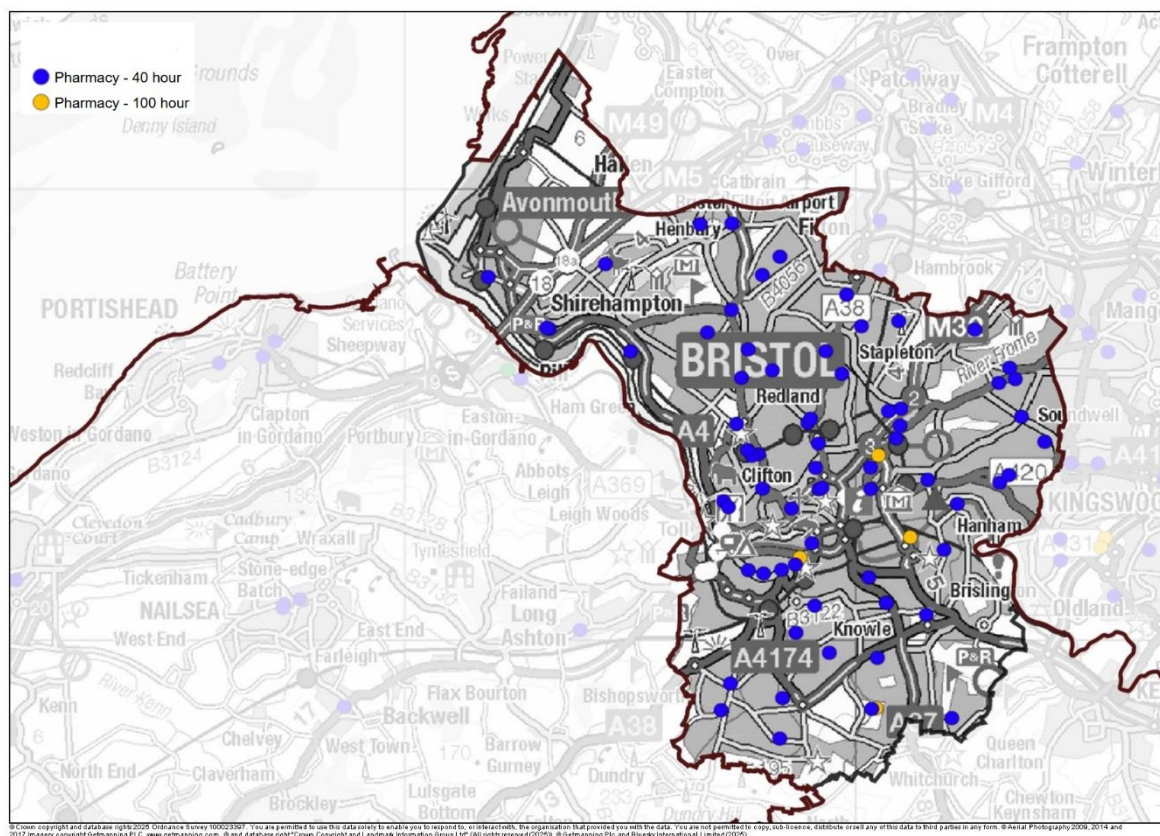
Both male and female healthy life expectancy in Bristol are below the national average. Women in Bristol live an average of 21.2 years in poor health. This is higher than England average for women and over 2.5 years worse than the Bristol average for men. Men in Bristol live on average 18.7 years in poor health – which is also higher than the England average for men.

5. Current pharmacy provision and dispensing activity in Bristol

There are currently 73 community pharmacies in Bristol (see Four pharmacies are contracted as 100 hour pharmacies, which have to provide extended opening hours of at least 72 hours per week.

Figure 9). This represents a rate of 15.1 per 100,000 residents. Four pharmacies are contracted as 100 hour pharmacies, which have to provide extended opening hours of at least 72 hours per week.

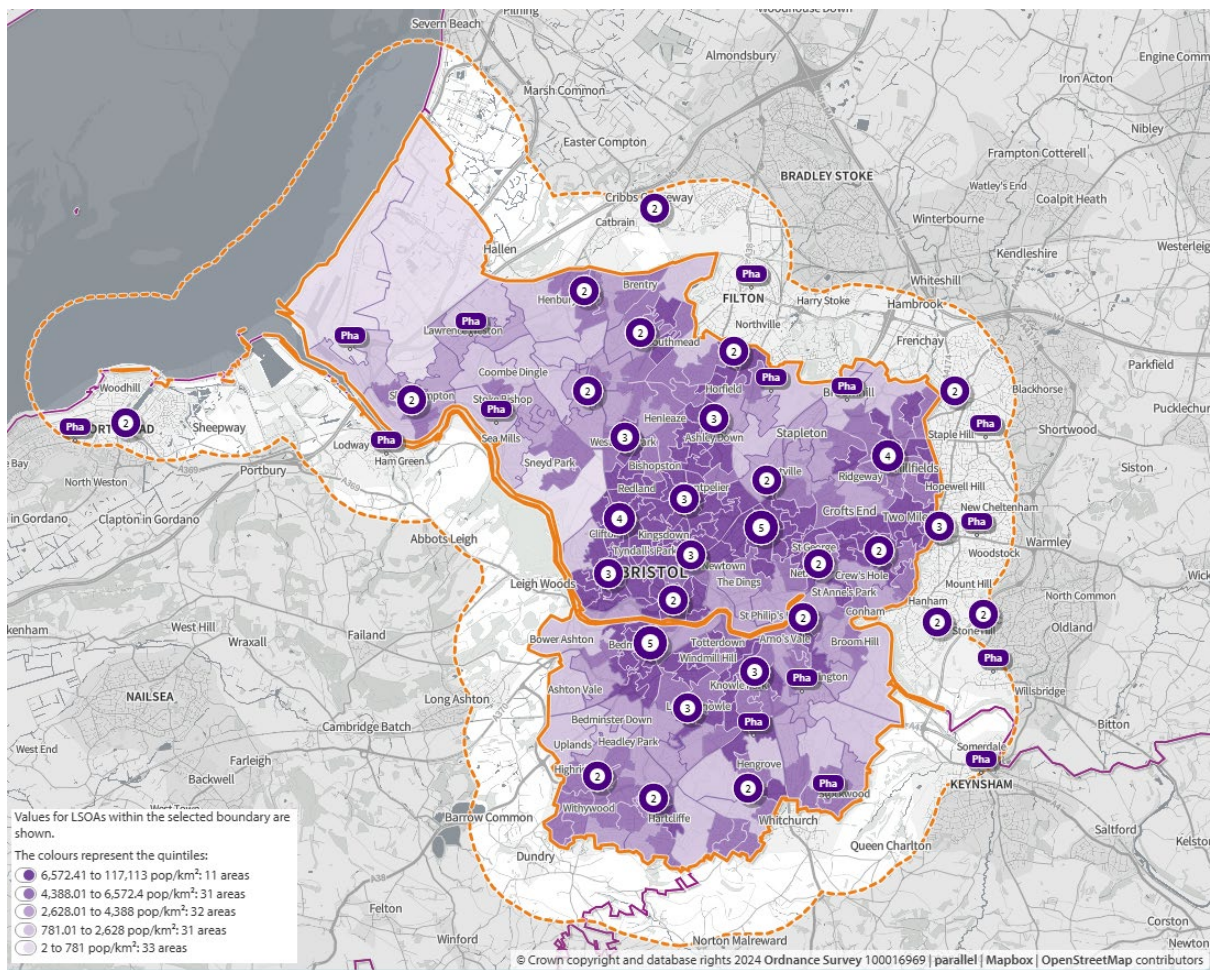
Figure 9: Pharmacy locations in Bristol in May 2025



5.1. Access to pharmacies

All Bristol residents benefit from the proximity to several pharmacies within 1 mile (1.6km) of the Health and Wellbeing Board area. Figure 10 shows the location of pharmacies in relation to the population density. This is to reflect that some areas that show up as less well served in the subsequent travel time analysis are usually not very populous.

Figure 10: Bristol pharmacies by population density with 1 mile (1.6km) buffer



5.2. Travel Time Analysis

The travel time benchmarks used in this assessment were informed by a public survey across Bristol, North Somerset and South Gloucestershire. While the measures differ slightly from those used in the previous PNA, they reflect what the majority of respondents considered acceptable travel times and continue to demonstrate adequate levels of access to community pharmacies.

All of the Bristol population is within a 10-minute week day rush hour drive to a pharmacy, and can access a pharmacy within a 20-minute weekday morning public transport journey. All of the Bristol population is within a 15-minute weekend drive of a pharmacy. The majority of the population (99.7%) is also within 1-mile walking distance or 1.6km, approximately a 20-minute walk of a pharmacy on weekdays.

The map below shows the location of the 1,617 residents who have a walk further than 1 mile. This area is classified as urban city and town, and is within the South Bristol locality, in the Broomhill Road area in the east part of Brislington. The nearest pharmacy is approximately 1.5 miles (2.5km) away, approximately 30 minutes walking and within 20 minutes by car. The Steering Group does not consider this to be a gap for the purposes of this PNA.

Figure 11: Area where residents have more than a mile walk to the nearest pharmacy

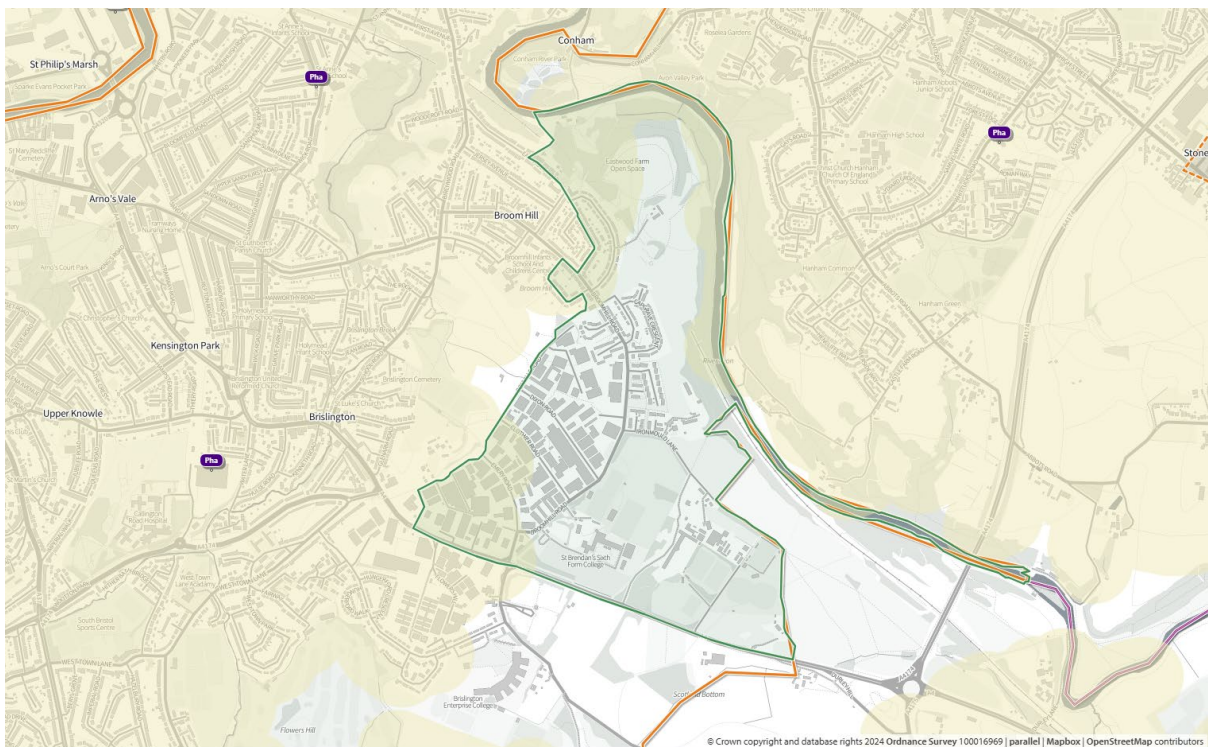


Figure 12: Pharmacies within 1-mile (1.6km) walking distance, Bristol (with 1-mile buffer)

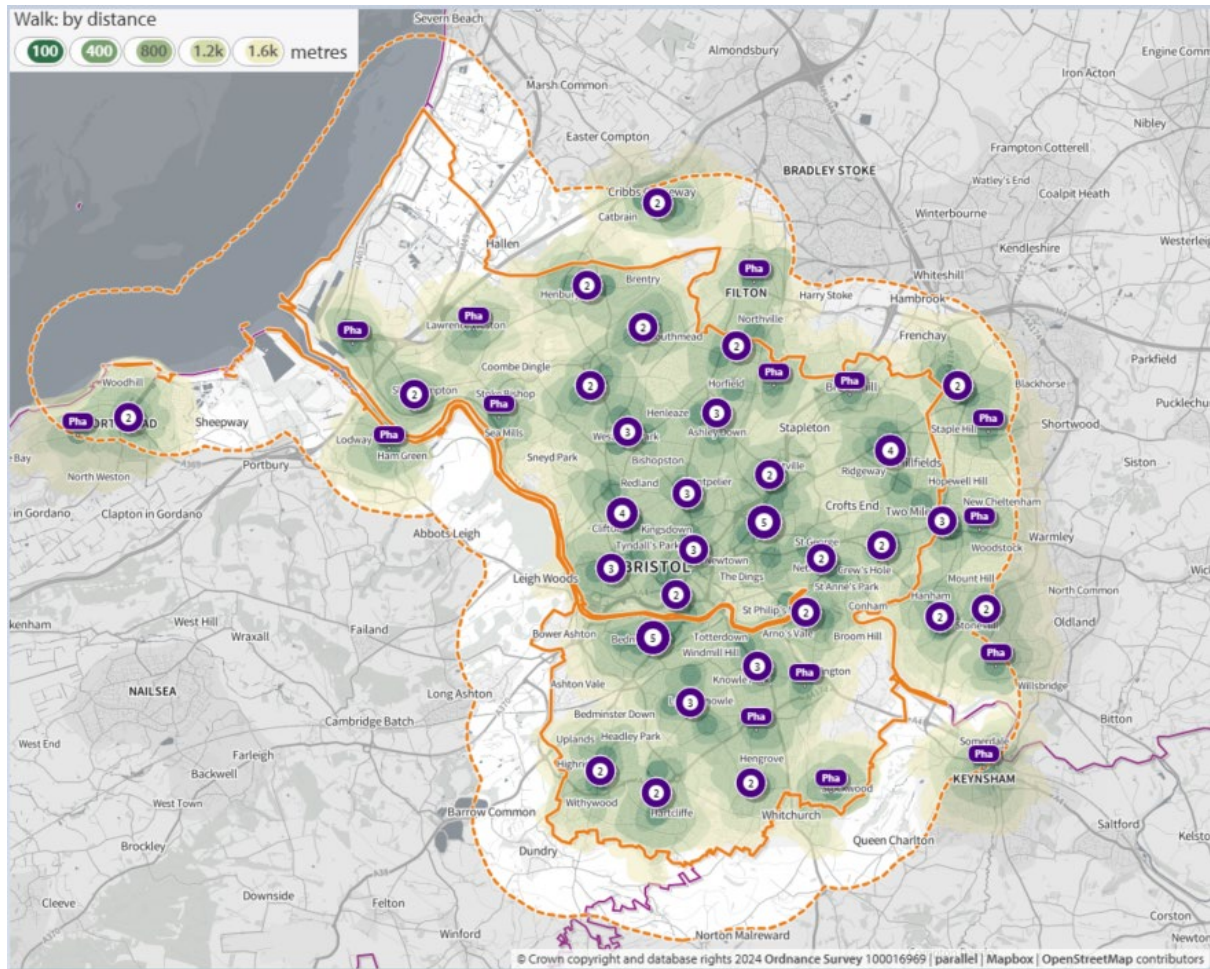
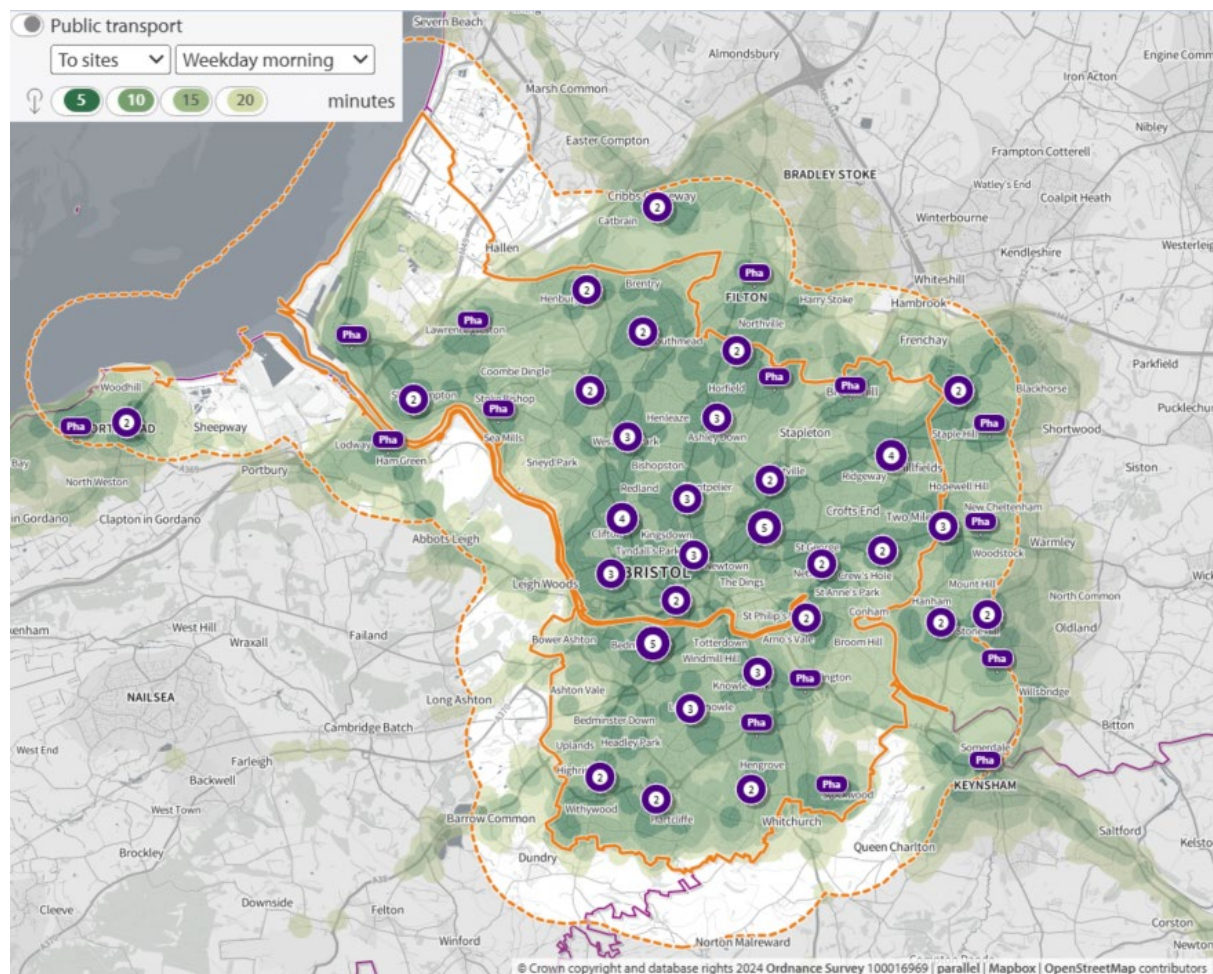


Figure 14: Pharmacies within 20-minute weekday morning public transport journey, Bristol (with 1-mile buffer)



Further travel time analysis is contained in Appendix II: Travel time maps.

5.3. Dispensing activity

In 2023/24, more than seven and a half million (7,586,794) prescriptions were generated by the GPs within the local authority area of Bristol. 36% were prescribed by GPs in the North & West locality, another 36% by GPs in the South Bristol locality, and 28% by GPs in the Inner City & East Beach.

86.5% of these prescriptions were dispensed within Bristol and less than 2% (125,691) of prescriptions were dispensed by GP practices. There are no practices classed as 'Dispensing GP' practices in Bristol.

6. Provision of pharmaceutical services by locality area

6.1. Localities used for analysis

Three localities have been used for the PNA in Bristol: North and West Bristol; Inner City and East and South Bristol.

North and West Bristol

- Includes the wards: Bishopston and Ashley Down, Clifton, Clifton Down, Cotham, Redland, Stoke Bishop, Westbury-on-Trym and Henleaze, Avonmouth and Lawrence Weston, Henbury and Brentry, Horfield, Lockleaze, Southmead.
- Bristol North and West is, on average, much less deprived than Bristol as a whole, but with pockets of higher health need and lower life expectancy.

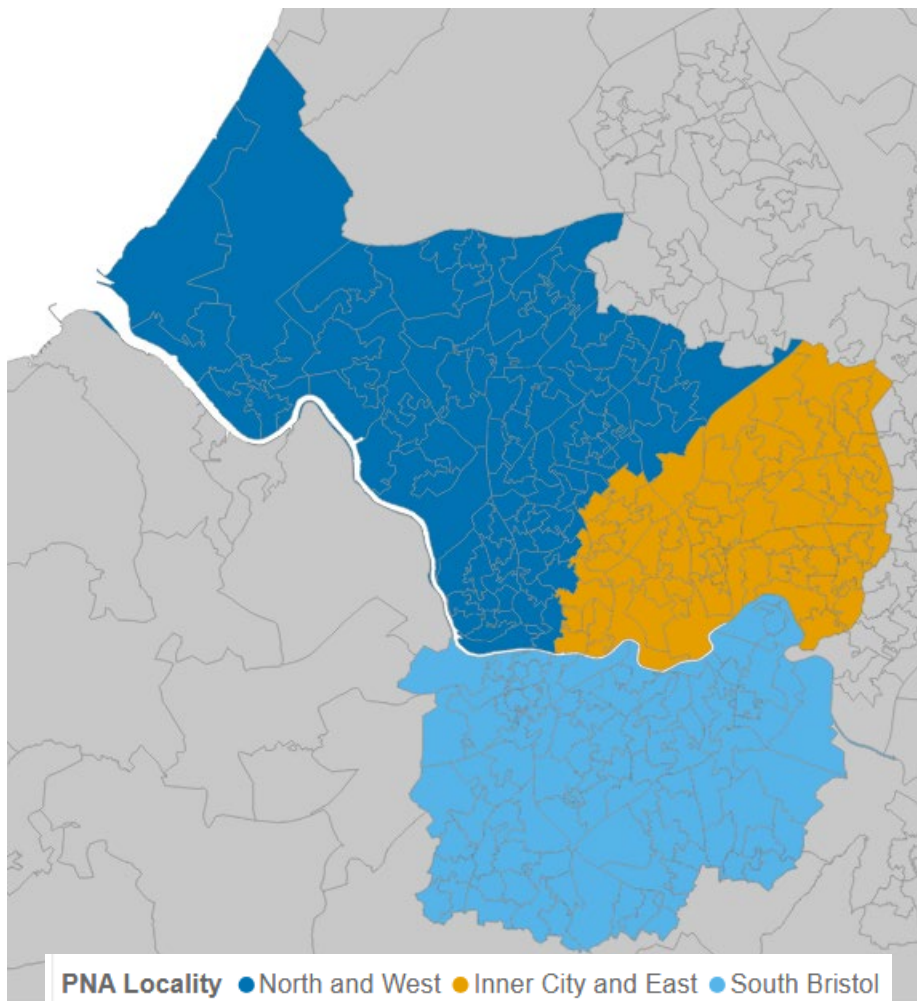
Inner City and East Bristol

- Includes the wards Eastville, Frome Vale, Hillfields, St George Central, St George Troopers Hill, St George West, Ashley, Central, Easton, Hotwells and Harbourside, Lawrence Hill.
- Inner City & East locality has higher levels of poverty and deprivation on average than Bristol overall.

South Bristol

- Includes the wards Bedminster, Bishopsworth, Brislington East, Brislington West, Filwood, Hartcliffe and Withywood, Hengrove and Whitchurch Park, Knowle, Southville, Stockwood, Windmill Hill.
- The South locality has within its area some of the highest levels of poverty and deprivation in Bristol.

Figure 15: PNA localities in Bristol



6.2. Locality Profiles

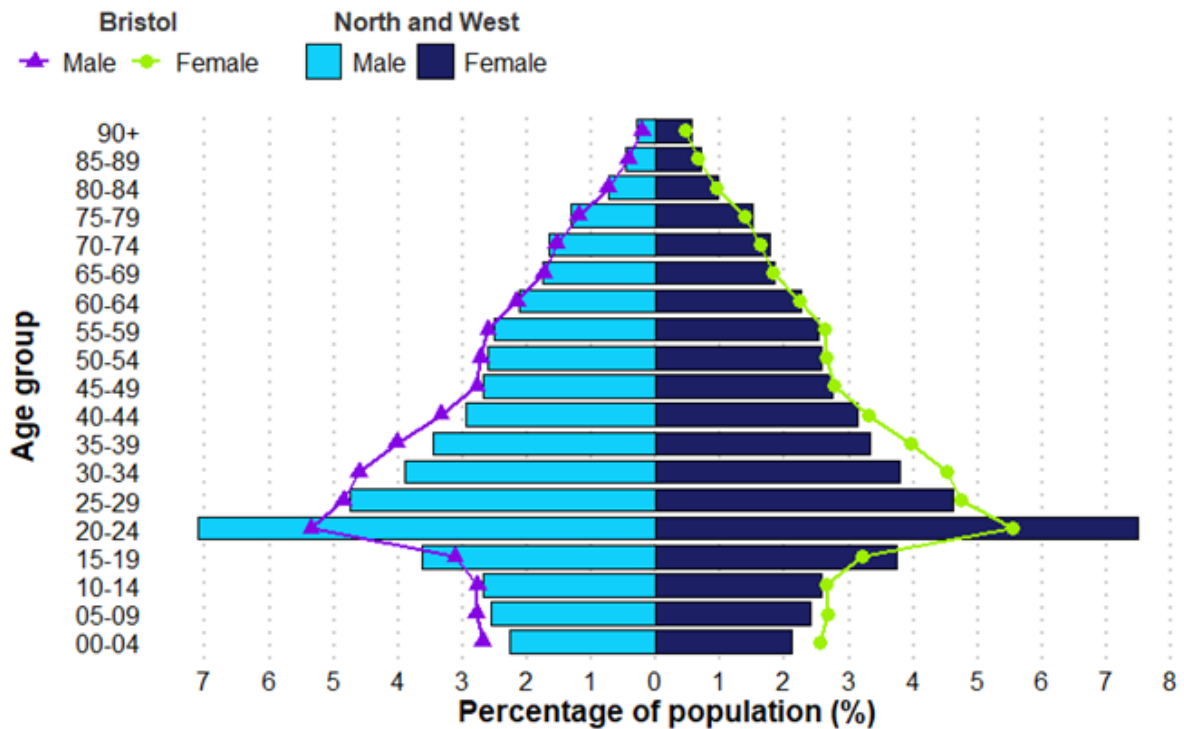
6.2.1. North and West Locality

Locality Overview

North and West PNA Locality in Bristol has an estimated population of 188,064 as of 2022. Summary statistics:

- 50.5% of its residents are female, 49.5% are male.
- 13.5% are 65 years and older.
- 9.3% of its population live in the 20% most deprived areas of Bristol.
- 21.1% live in the 20% most deprived areas of England.

Figure 16: North and West PNA Locality population breakdown by age & sex (2022)



Source: Office for National Statistics, mid-year small area population estimates.

Overview of Pharmacies

As of May 2025, there are 27 pharmacies in North and West PNA locality. There are no practices or branches of practices with dispensing doctors providing drugs and appliances to their own patients.

Of the 27 pharmacies, there are:

- 27 providing Pharmacy First services.
- 16 independent pharmacies.
- 11 pharmacies owned by national pharmacy chains:
 - Three by Boots Pharmacy
 - Three by Well Pharmacy
 - Two by Day Lewis Pharmacy
 - Two by Jhoots Pharmacy
 - One by Tesco Pharmacy

- 27 pharmacies with 40-hour contracts and no pharmacies with 72-100-hour contracts. However Tesco Eastgate provides services a minimum of 72 hours a week currently.
- No distance-selling pharmacies
- No pharmacies with local pharmaceutical services contracts
- No dispensing appliance contractors (DAC).

Table 2 and Table 3 show the provision in North and West compared to other areas. Note that there is no national expectation or standard on the ratio of pharmacies to population. These ratios do not consider the size and staffing of pharmacies which will determine the size of the population they are able to serve.

Table 2: Number and rate of pharmacies in North and West PNA Locality, Bristol, and the South West (May 2025)

Area	Population	Number of pharmacies	Pharmacies per 100,000 population
Locality	188,064	27	14.4
Bristol	482,998	73	15.1
South West	5,811,259	900	15.5

Source: NHS South West Collaborative Commissioning Hub

Notes: Populations for localities are based on the latest ONS mid-year population estimates for small areas (2022), and populations for local authority and region are based on the latest subnational mid-year estimates (2023).

Table 3: Number and rate of items dispensed in North and West PNA Locality, Bristol, the South West, and England (2023/24)

Area	Population	Number of dispensed items	Items dispensed per head
Locality	188,064	2,391,714	12.7
Bristol	482,998	6,785,673	14.0
South West	5,811,259	99,164,702	17.1
England	57,690,323	1,112,920,890	19.3

Source: NHS Business Services Authority

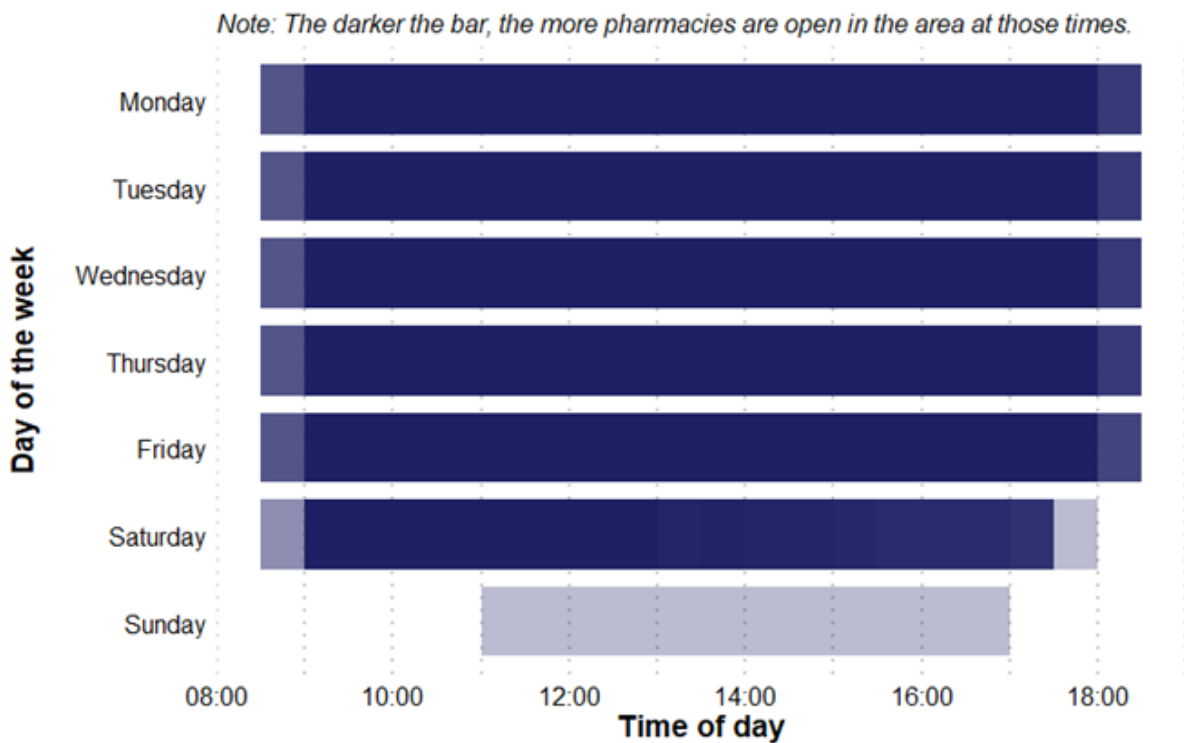
Notes: Populations for localities are based on the latest ONS mid-year population estimates for small areas (2022), and populations for local authority and region are based on the latest subnational mid-year estimates (2023).

Access to Essential Services

As of May 2025, in North and West PNA locality, there are:

- Three pharmacies open seven days a week
- Nineteen pharmacies open six days a week
- Five pharmacies open only five days a week
- No pharmacies open before 8:00 at least five days a week
- One pharmacy open past 18:30 at least five days a week

Figure 17: North and West PNA Locality pharmacy coverage across the week (May 2025)



Source: NHS South West Collaborative Commissioning Hub

Provision of Advanced and Enhanced Services

Below is a summary of the provision of advanced and enhanced services in North and West PNA locality as of May 2025.

- New Medicine Service (NMS) accreditation: 27 pharmacies. In 2023/24 (the last full year of data), there were 8,032 NMSs undertaken.
- Specialist Medicines Provider: One pharmacy.
- Influenza vaccination: 25 pharmacies providing this advanced service.
- Appliance Use Reviews: No pharmacies providing this service. Many appliances will be dispensed by DACs based around the country, which may provide this service.
- NHS Pharmacy contraception: 18 pharmacies providing this service.
- Lateral Flow Device test supply: 20 pharmacies providing this service.
- Hypertension Case-Finding: 24 pharmacies providing this service.
- Stop Smoking: nine pharmacies providing this service.
- Specialist Medicines Service: 1 pharmacies providing this service.

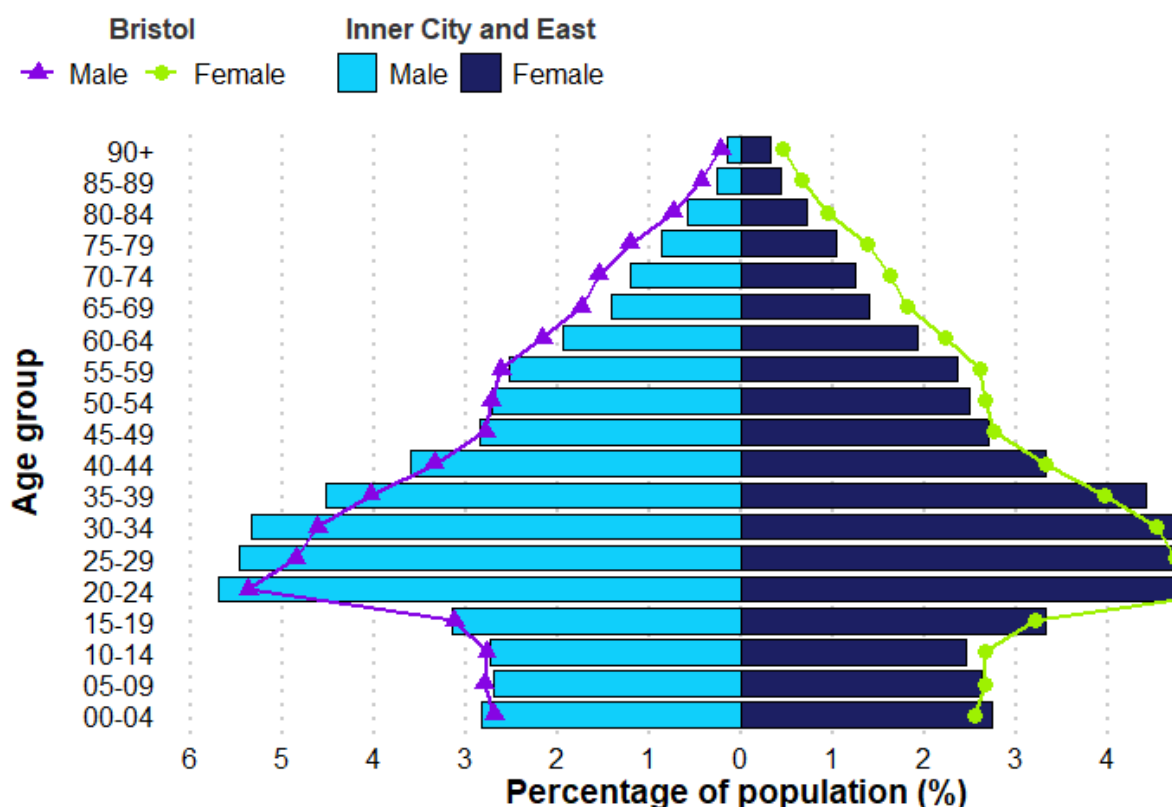
6.2.2. Inner City and East Locality

Locality Overview

Inner City and East PNA Locality in Bristol has an estimated population of 137,925 as of 2022. Summary statistics:

- 49.5% of its residents are female, 50.5% are male.
- 9.7% are 65 years and older.
- 25.3% of its population live in the 20% most deprived areas of Bristol.
- 37.8% live in the 20% most deprived areas of England.

Figure 18: Inner City and East PNA Locality population breakdown by age & sex (2022)



Source: Office for National Statistics, mid-year small area population estimates.

Overview of Pharmacies

As of May 2025, there are 24 pharmacies in Inner City and East PNA locality. There are no practices or branches of practices with dispensing doctors providing drugs and appliances to their own patients.

Of the 24 pharmacies, there are:

- 23 providing Pharmacy First services.
- 12 independent pharmacies.
- 12 pharmacies owned by national pharmacy chains:
 - Five by Boots Pharmacy
 - Three by Well Pharmacy
 - Two by Jhoots Pharmacy
 - One by Morrisons Pharmacy
 - One by Superdrug Pharmacy

- 22 pharmacies with 40-hour contracts and two pharmacies with 100-hour contracts. The 100-hour pharmacies are:
 - Easton Day & Night Chemist, 192 Stapleton Road, Easton
 - Boots Pharmacy, Unit 1 Avonmeads Retail Park, St Philips Causeway
- No distance-selling pharmacies
- No pharmacies with local pharmaceutical services contracts
- No dispensing appliance contractors (DAC).

Table 4 and Table 5 show the provision in Inner City and East compared to other areas. Note that there is no national expectation or standard on the ratio of pharmacies to population. These ratios do not consider the size and staffing of pharmacies which will determine the size of the population they are able to serve.

Table 4: Number and rate of pharmacies in Inner City and East PNA Locality, Bristol, the South West, and England (2023/24)

Area	Population	Number of pharmacies	Pharmacies per 100,000 population
Locality	137,925	24	17.4
Bristol	482,998	73	15.1
South West	5,811,259	900	15.5

Source: NHS South West Collaborative Commissioning Hub

Notes: Populations for localities are based on the latest ONS mid-year population estimates for small areas (2022), and populations for local authority and region are based on the latest subnational mid-year estimates (2023).

Table 5: Number and rate of items dispensed in Inner City and East PNA Locality, Bristol, the South West, and England (2023/24)

Area	Population	Number of dispensed items	Items dispensed per head
Locality	137,925	2,025,417	14.7
Bristol	482,998	6,785,673	14.0
South West	5,811,259	99,164,702	17.1
England	57,690,323	1,112,920,890	19.3

Source: NHS Business Services Authority

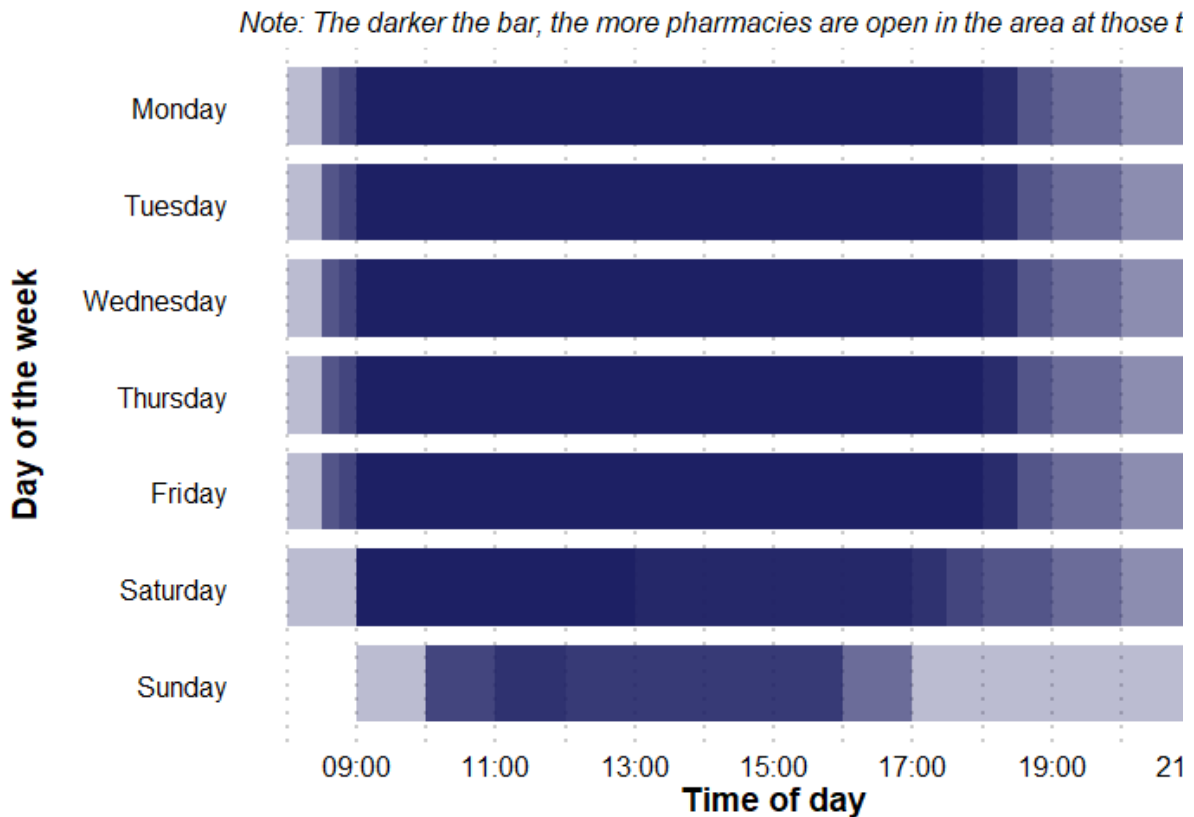
Notes: Populations for localities are based on the latest ONS mid-year population estimates for small areas (2022), and populations for local authority and region are based on the latest subnational mid-year estimates (2023).

Access to Essential Services

As of May 2025, in Inner City and East PNA locality, there are:

- Five pharmacies open seven days a week
- Thirteen pharmacies open six days a week
- Six pharmacies open only five days a week
- No pharmacies open before 8:00 at least five days a week
- Three pharmacies open past 18:30 at least five days a week

Figure 19: Inner City and East PNA Locality pharmacy coverage across the week (May 2025)



Source: NHS South West Collaborative Commissioning Hub

Provision of Advanced and Enhanced Services

Below is a summary of the provision of advanced and enhanced services in Inner City and East PNA locality as of May 2025.

New Medicine Service (NMS) accreditation: 22 pharmacies. In 2023/24 (the last full year of data), there were 5,556 NMSs undertaken.

Influenza vaccination: 21 pharmacies providing this advanced service.

Appliance Use Reviews: No pharmacies providing this service. Many appliances will be dispensed by DACs based around the country, which may provide this service.

NHS Pharmacy contraception: 18 pharmacies providing this service.

Lateral Flow Device test supply: 17 pharmacies providing this service.

Hypertension Case-Finding: 22 pharmacies providing this service.

Stop Smoking: 13 pharmacies providing this service.

Specialist Medicines Service: 4 pharmacies providing this service.

6.2.3. South Locality

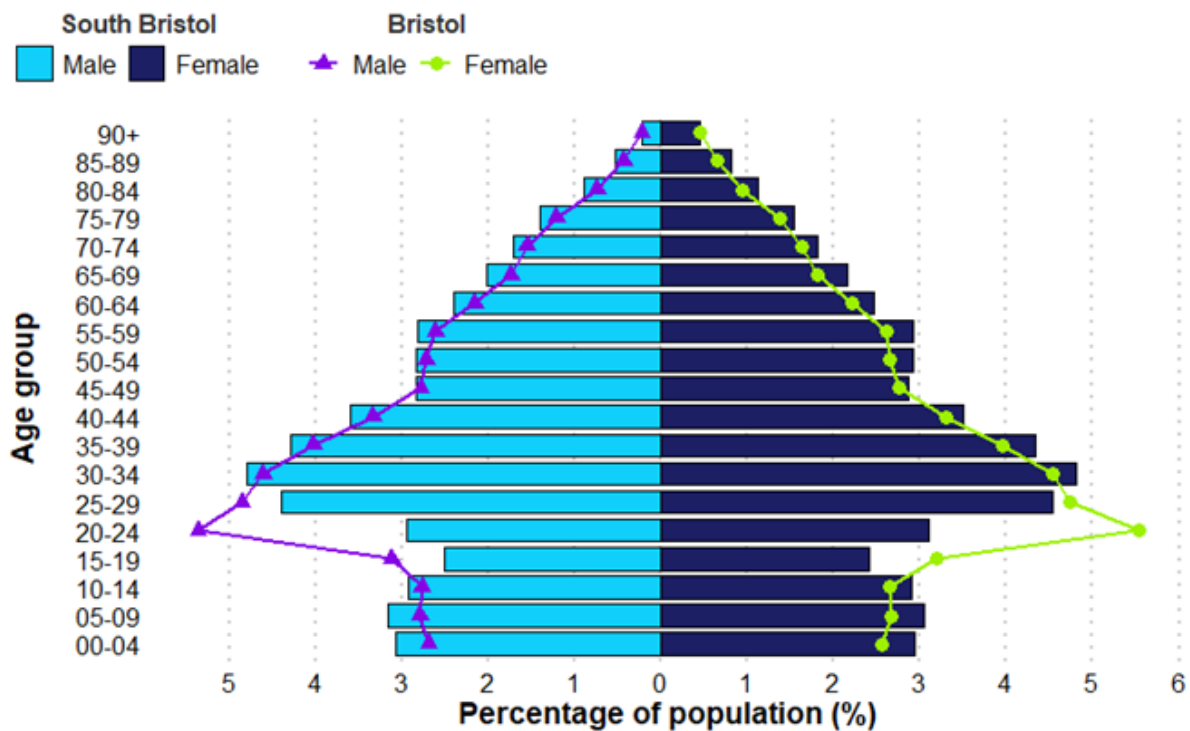
Locality Overview

South Bristol PNA Locality in Bristol has an estimated population of 154,616 as of 2022.

Summary statistics:

- 50.7% of its residents are female, 49.3% are male.
- 14.7% are 65 years and older.
- 29.1% of its population live in the 20% most deprived areas of Bristol.
- 35.4% live in the 20% most deprived areas of England.

Figure 20: South Bristol PNA Locality population breakdown by age & sex (2022)



Source: Office for National Statistics, mid-year small area population estimates.

Overview of Pharmacies

As of May 2025, there are 22 community pharmacies in South Bristol PNA locality. There are no practices or branches of practices with dispensing doctors providing drugs and appliances to their own patients. South Bristol PNA locality also has one Distance-Selling Pharmacy (DSP) and no Dispensing Appliance Contractors (DAC).

Of the 22 pharmacies, there are:

- 22 providing Pharmacy First services.
- 11 independent pharmacies.
- 11 pharmacies owned by national pharmacy chains:
 - Two by Asda Pharmacy
 - Two by Boots Pharmacy
 - Two by Superdrug Pharmacy
 - Two by Well Pharmacy
 - One by Avicenna Pharmacy
 - One by Jhoots Pharmacy
 - One by Tesco Pharmacy
- 20 pharmacies with 40-hour contracts and two pharmacies with 100-hour contracts. The 100-hour pharmacies are:
 - Asda Pharmacy, Oatlands Avenue, Whitchurch
 - Asda Pharmacy, East Street, Bedminster
- No pharmacies with local pharmaceutical services contracts

Table 6 and Table 7 show the provision in South Bristol compared to other areas. Note that there is no national expectation or standard on the ratio of pharmacies to population. These ratios do not consider the size and staffing of pharmacies which will determine the size of the population they are able to serve.

Table 6: Number and rate of pharmacies in South Bristol PNA Locality, Bristol, and the South West, excluding DSPs (May 2025)

Area	Population	Number of pharmacies	Pharmacies per 100,000 population
Locality	154,616	22	14.2
Bristol	482,998	73	15.1
South West	5,811,259	900	15.5

Source: NHS South West Collaborative Commissioning Hub

Notes: Populations for localities are based on the latest ONS mid-year population estimates for small areas (2022), and populations for local authority and region are based on the latest subnational mid-year estimates (2023).

Table 7: Number and rate of items dispensed in South Bristol PNA Locality, Bristol, the South West, and England (2023/24)

Area	Population	Number of dispensed items	Items dispensed per head
Locality	154,616	2,368,542	15.3
Bristol	482,998	6,785,673	14.0
South West	5,811,259	99,164,702	17.1
England	57,690,323	1,112,920,890	19.3

Source: NHS Business Services Authority

Notes: Populations for localities are based on the latest ONS mid-year population estimates for small areas (2022), and populations for local authority and region are based on the latest subnational mid-year estimates (2023).

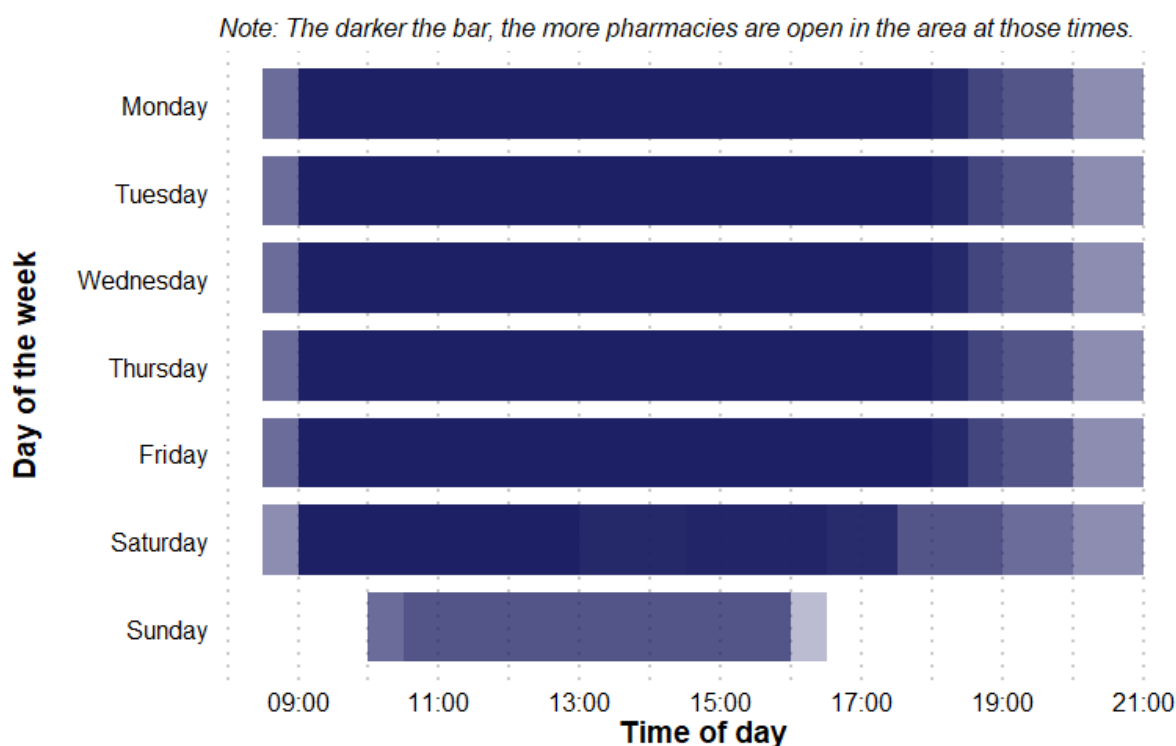
Access to Essential Services

As of May 2025, in South Bristol PNA locality, there are:

- Four pharmacies open seven days a week
- Fifteen pharmacies open six days a week
- Three pharmacies open only five days a week
- No pharmacies open before 8:00 at least five days a week
- Five pharmacies open past 18:30 at least five days a week

Approval to open a new pharmacy in the south locality by Spring 2026 has been granted by NHS England.

Figure 21: South Bristol PNA Locality pharmacy coverage across the week (May 2025)



Source: NHS South West Collaborative Commissioning Hub

Provision of Advanced and Enhanced Services

Below is a summary of the provision of advanced and enhanced services in South Bristol PNA locality as of May 2025.

- New Medicine Service (NMS) accreditation: 22 pharmacies. In 2023/24 (the last full year of data), there were 5,876 NMSs undertaken.
- Influenza vaccination: 22 pharmacies providing this advanced service.
- Appliance Use Reviews: No pharmacies providing this service. Many appliances will be dispensed by DACs based around the country, which may provide this service.
- NHS Pharmacy contraception: 20 pharmacies providing this service.
- Lateral Flow Device test supply: 19 pharmacies providing this service.
- Hypertension Case-Finding: 20 pharmacies providing this service.
- Stop Smoking: 11 pharmacies providing this service.

- Specialist Medicines Service: 2 pharmacies providing this service.

7. Public engagement in pharmaceutical needs assessments

7.1. Survey of residents

Healthwatch conducted an online survey on behalf of the Health and Wellbeing Board in support of the development of the PNA. The public and a wide range of community and special interest groups were invited to share their views of accessing pharmaceutical services. The survey was open from 8 January 2025 to 17 April 2025. The survey was also promoted through social media and newsletters by Bristol City Council.

A total of 109 responses were received for Bristol. All results are included in Appendix IV.

7.2. Consultation on the draft PNA

A formal public consultation on the draft PNA took place from 1st of July to 31st of August 2025. This allowed for extra time beyond the statutory consultation period of 60 days to take account of bank holidays.

The questions covered:

- Do you think that the information contained within the draft PNA accurately reflects the current pharmacy and prescription dispensing services available in Bristol?
- Do you think that the pharmaceutical needs of the population of Bristol have been adequately reflected in the draft PNA document?
- Do you feel that the pharmaceutical needs of the population of Bristol have been adequately reflected in the draft PNA?
- The draft PNA does not identify any gaps in the provision of necessary services. Do you agree with this statement?
- Do you agree with the conclusions contained within the draft PNA?

A wide range of stakeholders, patient groups and the public were encouraged to comment on the draft PNA as well as statutory consultees.

Statutory consultees include:

- Avon & Wiltshire Local Pharmaceutical Committee (LPC)
- Avon Local Medical Committee (LMC)
- NHS England
- South Gloucestershire Health and Wellbeing Board
- Bath & North East Somerset Health and Wellbeing Board
- All community pharmacy contractors in Bristol
- All dispensing GP practices in Bristol
- Parish and Town Councils in Bristol
- North Bristol NHS Trust
- Sirona Care & Health
- South Western Ambulance Service NHS Foundation Trust (SWASFT)
- Avon and Wiltshire Mental Health Trust
- University Hospital Bristol and Weston NHS Foundation Trust
- Healthwatch BNSSG

8. Results of the public consultation

The consultation on the Pharmaceutical Needs Assessment (PNA) for Bristol 2025–2028 received a total of 19 responses. Of these, eight were from postcodes within the Bristol City Council area, covering wards such as Brislington West and East, Eastville, Lawrence Hill, Southville, and St George Central and West. Eleven respondents did not provide a postcode.

Respondents were asked to indicate the capacity in which they were responding:

18 respondents answered this question.

- 8 responded as individuals.
- 10 provided official responses on behalf of organisations, including:
 - 3 from NHS organisations (including GP practices),
 - 2 from pharmacies
 - 2 from Health and Wellbeing Boards
 - 1 from a voluntary or community sector organisation
 - 1 from the Local Pharmaceutical Committee.

While the majority of respondents agreed that the pharmaceutical needs of the population had been adequately reflected in the draft PNA however, a sizeable proportion of the responses from individuals and a voluntary sector organisation did not support the recommendations and conclusions. Thematic analysis of the feedback highlighted several concerns:

- Insufficient pharmacy services in specific areas, particularly in deprived communities, with calls for additional provision.
- Workforce challenges and significant service pressures affecting pharmacy operations.
- Perceived inconsistencies with wider council policies on accessibility and travel, and concerns about demographic changes, including a growing population with increasing pharmacy needs.
- Reduction in opening hours and temporary closures impacting the availability of services from other local pharmaceutical contractors.

These responses reflect concerns about the availability, accessibility, and user experience of community pharmacies. However, while important and pertinent, they fall outside the statutory remit of the PNA, which is governed by the NHS (Pharmaceutical Services and Local Pharmaceutical Services) Regulations 2013.

All feedback has been shared with the BNSSG Integrated Care Board, the Southwest Commissioning Support Hub, and other partner organisations for further consideration and action.

The Health and Wellbeing Board has raised concerns with the Government regarding the strictly regulated nature and constraints of the PNA process, which limit its ability to capture the lived experiences and voices of the local population.

Under the regulations, the Bristol Health and Wellbeing Board must continuously monitor changes in pharmaceutical service provision and issue supplementary statements to the PNA if necessary. If temporary closures become permanent, this may result in a gap in service provision, requiring further evaluation and response.

Based on the consultation findings, the Bristol PNA Steering Group does not recommend changes to the report's findings and recommendations but acknowledges the concerns raised regarding accessibility, provision, and temporary closures.

The Steering Group extends its thanks to all individuals and organisations who contributed to the consultation for their time and valuable input.

A summary of the public consultation responses can be found in Appendix VI.

9. Conclusion

Necessary services: statement of any gaps in current provision

Given the findings of this needs assessment, the Steering Group is satisfied that Bristol has adequate coverage of essential pharmaceutical services through community pharmacies.

This conclusion is reached based on travel time analysis using car driving times, public transport and walk times.

Necessary services: statement of any gaps in future provision

The current trajectory of housing development does not show a requirement for further provision within the time frame of this PNA. Mapping of essential pharmaceutical services was considered in the context of housing trajectories at a Locality and Ward level, identifying that proposed developments align to where current provision is higher. The requirement to review this PNA within a 3-year time frame is deemed sufficient to revisit the impact on ongoing development and this should remain a focus of future needs assessments.

10. Table of Figures

Figure 1: Population breakdown by gender for Bristol and England, 2023	22
Figure 2: Percentage of the population from a Black and racially minoritised background, 2021	23
Figure 3: Percentage of households who own a car by locality area, 2021	25
Figure 4: Index of Multiple Deprivation	26
Figure 5: Least and most deprived areas in Bristol.	27
Figure 6: Bristol Population Projections	28
Figure 7: Age Bands Trends	29
Figure 8: Bristol 5 Year dwelling supply 2025- 2029.....	30
Figure 9: Pharmacy locations in Bristol in May 2025.....	33
Figure 10: Bristol pharmacies by population density with 1 mile (1.6km) buffer.....	34
Figure 11: Area where residents have more than a mile walk to the nearest pharmacy	35
Figure 12: Pharmacies within 1-mile (1.6km) walking distance, Bristol (with 1-mile buffer).....	36
Figure 13: Pharmacies within 10-minute rush hour car journey, Bristol (with 1-mile buffer).....	37
Figure 14: Pharmacies within 20-minute weekday morning public transport journey, Bristol (with 1-mile buffer)	38
Figure 15: PNA localities in Bristol	40
Figure 16: North and West PNA Locality population breakdown by age & sex (2022)....	41
Figure 17: North and West PNA Locality pharmacy coverage across the week (May 2025)	43
Figure 18: Inner City and East PNA Locality population breakdown by age & sex (2022)	45
Figure 19: <i>Inner City and East PNA Locality pharmacy coverage across the week (May 2025)</i>	47
Figure 20: South Bristol PNA Locality population breakdown by age & sex (2022).....	48
Figure 21: South Bristol PNA Locality pharmacy coverage across the week (May 2025)	51
Figure 22: Pharmacies within 30-minute rush hour car journey, Bristol (with 1-mile buffer).....	65
Figure 23: Pharmacies within 30-minute weekday morning public transport journey, Bristol (with 1-mile buffer)	66

Figure 24: Car driving time – Sundays 67

Figure 25: Car driving time – Saturday night (after 7pm)..... 68

Figure 26: Cycle time to nearest pharmacy 69

11. Table of Tables

Table 1: Population estimates by ethnic group in Bristol and England and Wales	23
Table 2: Number and rate of pharmacies in North and West PNA Locality, Bristol, and the South West (May 2025)	42
Table 3: Number and rate of items dispensed in North and West PNA Locality, Bristol, the South West, and England (2023/24)	42
Table 4: Number and rate of items dispensed in Inner City and East PNA Locality, Bristol, the South West, and England (2023/24).....	46
Table 5: Number and rate of items dispensed in Inner City and East PNA Locality, Bristol, the South West, and England (2023/24).....	46
Table 6: Number and rate of pharmacies in South Bristol PNA Locality, Bristol, and the South West (May 2025).....	50
Table 7: Number and rate of items dispensed in South Bristol PNA Locality, Bristol, the South West, and England (2023/24).....	50
Table 8 :Local health, public health data for small geographic areas (as at April 2025)	61

Appendix I: Locality health needs

Locality health needs were assessed using published public health indicators⁸. Values have been colour-coded to provide a visual snapshot. While red may often indicate poorer outcomes, interpretation should always consider the context of each indicator - particularly for community measures (e.g. population proportions or English language proficiency), where higher values may reflect demographic diversity rather than disadvantage.

Red: Value is greater than both England and the relevant Local Authority

Yellow: Value is between England and the Local Authority (i.e. one higher, one lower)

Green: Value is lower than both England and the relevant Local Authority

Table 8 :Local health, public health data for small geographic areas (as of April 2025)

Topic Subtopic Indicator	Bristol	Inner City and East	North and West	South Bristol	England
Our community Population					
Percentage of the total resident population who are 0 to 4 years of age (2020)	5.9	6.1	5.1	6.8	5.7
Percentage of the total resident population who are 0 to 15 years of age (2020)	18.4	17.7	17.3	20.4	19.2
Percentage of the total resident population who are 5 to 15 years of age (2020)	12.5	11.7	12.1	13.6	13.5
Percentage of the total resident population who are 16 to 24 years of age (2020)	15.8	18.4	18.7	9.8	10.5
Percentage of the total resident population who are 25 to 64 years of age (2020)	52.9	54.1	50.0	55.2	51.8
Percentage of the total resident population who are 50 to 64 years of age (2020)	14.2	12.5	14.1	15.9	19.2
Percentage of the total resident population who are 65 and over (2020)	12.9	9.8	14.0	14.6	18.5
Percentage of the total resident population aged 85 and over (2020)	1.9	1.4	2.2	2.1	2.5
Population density, people per square kilometre (2020)	4250.3	6124.2	3446.8	4237.3	434.1
Our community Ethnicity & Language					
Percentage of population (all ages) whose ethnic group is not 'white' (2011)	16.0	31.2	12.7	7.4	14.6
Percentage of population (all ages) whose ethnicity is not 'White UK' (2011)	22.1	38.2	19.5	12.0	20.2

⁸ <https://fingertips.phe.org.uk/profile/local-health> Accessed 01/05/2025

Topic Subtopic Indicator	Bristol	Inner City and East	North and West	South Bristol	England
The percentage of people (aged 3+ yrs) that cannot speak English well or at all (2011)	1.5	3.0	1.0	0.8	1.7
Our community Deprivation, Housing, and living environment					
Index of Multiple Deprivation (IMD) Score (2019)	26.4	31.7	18.6	31.3	21.7
Income deprivation, English Indices of Deprivation (2019)	14.1	17.3	10.0	16.1	12.9
Child Poverty, Income deprivation affecting children index (IDACI), <16 yrs (2019)	20.6	24.2	15.0	23.4	17.1
Older people in poverty, income deprivation affecting older people Index (IDAOPI), 60+ yrs (2019)	17.5	23.2	13.6	18.3	14.2
Modelled estimates of the proportion of households in fuel poverty (2020)	14.4	16.0	13.3	14.2	13.2
Proportion of households with overcrowding based on overall room occupancy levels (2011)	13.1	19.2	12.5	8.6	8.7
Proportion of older people living alone, 65+ yrs (2011)	36.3	40.6	35.7	34.3	31.5
Percentage of households in Poverty (2013/14)		29.9	21.8	22.3	21.1
Our community Employment					
Unemployment (Percentage of the working age population claiming out of work benefit), 16-64 yrs (2021/22)	4.7	6.0	3.5	4.9	5.0
Long-Term Unemployment. Rate per 1,000 working age population, 16-64 yrs (2021/22)	1.3	1.3	1.1	1.7	1.9
Behavioural risk factors and child health Behavioural risk factors					
Smoking prevalence at age 15. Regular smokers (modelled estimates) (2014)	7.8	5.2	9.3	7.9	5.4
Smoking prevalence at age 15. Regular or occasional smokers (modelled estimates) (2014)	11.3	8.6	12.7	11.6	8.2
Reception prevalence of obesity (including severe obesity) (2021/22 - 23/24)	8.8	9.1	8.3	9.8	9.6
Reception prevalence of overweight (including obesity) (2021/22 - 23/24)	20.3	19.6	18.7	22.4	21.9
Year 6 prevalence of obesity (including severe obesity) (2021/22 - 23/24)	21.1	23.9	18.0	22.1	22.7
Year 6 prevalence of overweight (including obesity) (2021/22 - 23/24)	35.0	38.4	31.0	36.0	36.7
Behavioural risk factors and child health Child and Maternal Health					

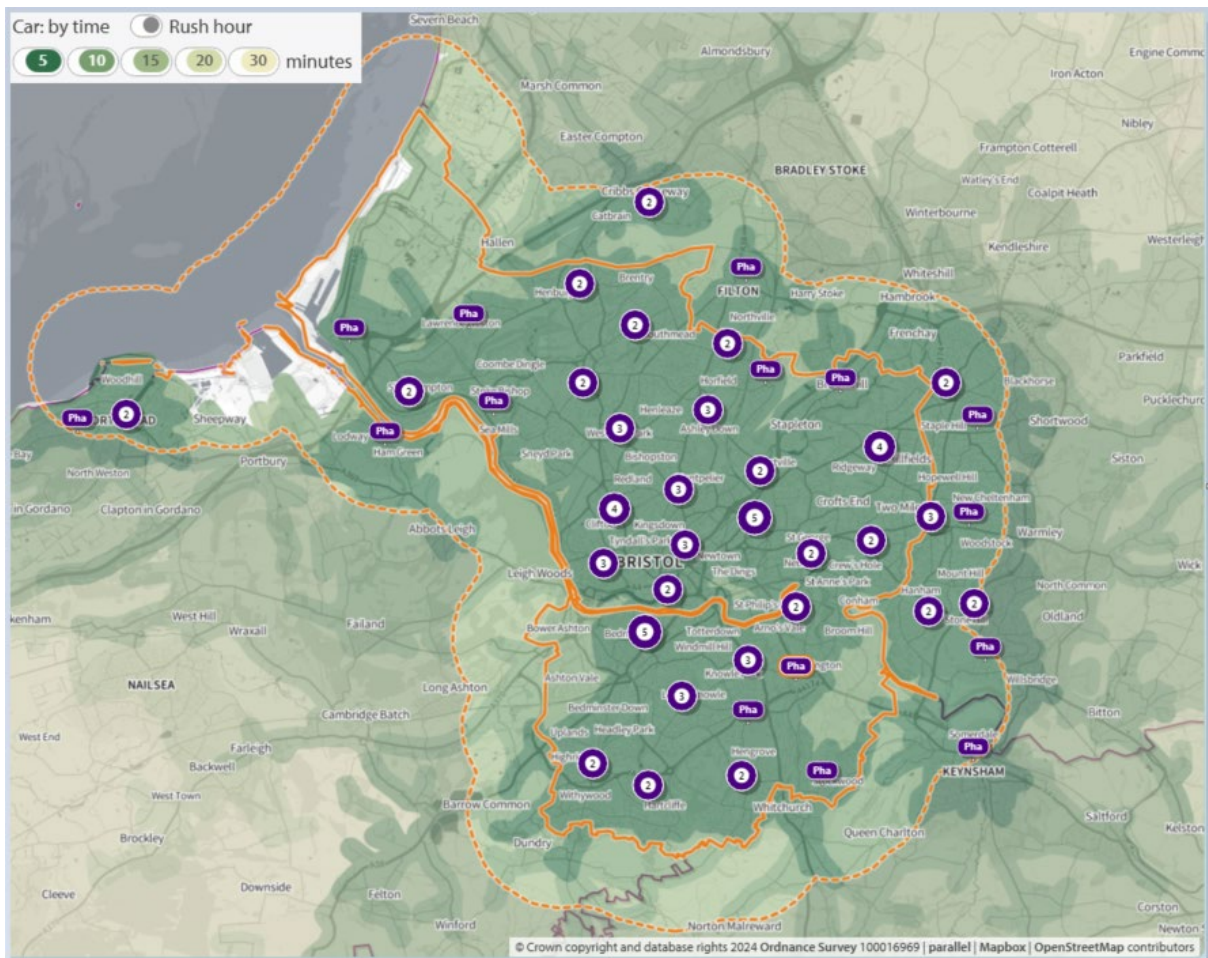
Topic Subtopic Indicator	Bristol	Inner City and East	North and West	South Bristol	England
Proportion of deliveries (births) to teenage mothers (12-17 yrs) (2016/17 - 20/21)	0.5	0.0	0.3	0.8	0.7
General fertility rate, live births per 1,000 women aged 15 to 44 years (2016 - 20)	51.9	52.1	42.8	64.2	59.2
Behavioural risk factors and child health Children and Young people: Health care use					
Emergency hospital admissions in under 5 years old, crude rate per 1,000 (2016/17 - 20/21)	100.1	102.8	94.1	103.5	140.7
Emergency hospital admissions for injuries in under 5 years old, crude rate per 10,000 (2016/17 - 20/21)	129.2	130.9	112.7	142.3	119.3
Emergency hospital admissions for injuries in under 15 years old, crude rate per 10,000 (2016/17 - 20/21)	100.8	100.6	92.2	109.4	92.0
Emergency hospital admissions for injuries in 15 to 24 years old, crude rate per 10,000 (2016/17 - 20/21)	153.1	149.2	130.8	206.0	127.9
Disease and poor health Emergency Hospital Admissions: Adults					
Emergency hospital admissions for all causes, indirectly standardised ratio per 100 (2016/17–2020/21)	106.2	115.2	96.8	110.8	100
Emergency hospital admissions for coronary heart disease, indirectly standardised ratio per 100 (2016/17–2020/21)	103.7	109.7	88.5	114.7	100
Emergency hospital admissions for stroke, indirectly standardised ratio per 100 (2016/17–2020/21)	99.7	105.0	87.0	109.1	100
Emergency hospital admissions for myocardial infarction (heart attack), indirectly standardised ratio per 100 (2016/17–2020/21)	101.4	108.2	87.5	110.4	100
Emergency hospital admissions for chronic obstructive pulmonary disease (COPD), indirectly standardised ratio per 100 (2016/17–2020/21)	150.9	161.2	126.5	177.8	100
Emergency hospital admissions for hip fracture in persons 65 years and over, indirectly standardised ratio per 100 (2016/17–2020/21)	102.2	95.2	93.1	108.6	100
Emergency hospital admissions for intentional self harm, indirectly standardised ratio per 100 (2016/17–2020/21)	160.3	177.9	136.3	195.9	100
Disease and poor health Adult Health Care Use and Long Term Conditions					

Topic Subtopic Indicator	Bristol	Inner City and East	North and West	South Bristol	England
Hospital admissions for alcohol attributable conditions, broad definition, indirectly standardised ratio per 100 (2016/17–2020/21)	135.2	152.3	123.2	136.0	100
Hospital admissions for alcohol attributable conditions, narrow definition, indirectly standardised ratio per 100 (2016/17–2020/21)	133.4	149.2	120.7	135.3	100
Percentage of people who reported having a limiting long term illness or disability (2011)	16.7	16.6	14.8	19.2	17.6
Life expectancy and causes of death Life Expectancy					
Life expectancy at birth, upper age band 90 and over, Female (2016 - 20)	82.7	82.2	84.8	82.2	83.2
Life expectancy at birth, upper age band 90 and over, Male (2016 - 20)	78.6	76.8	80.8	78.4	79.5
Life expectancy and causes of death Mortality					
Deaths from all causes, indirectly standardised ratio per 100 (2016 - 20)	105.0	112.9	96.6	109.7	100
Deaths from all causes, under 75 years, indirectly standardised ratio per 100 (2016 - 20)	112.6	133.7	93.8	118.9	100
Deaths from all cancer, indirectly standardised ratio per 100 (2016 - 20)	109.2	110.9	97.6	121.3	100
Deaths from all cancer, under 75 years, indirectly standardised ratio per 100 (2016 - 20)	115.3	128.0	98.1	126.1	100
Deaths from circulatory disease, indirectly standardised ratio per 100 (2016 - 20)	93.7	99.9	84.1	100.9	100
Deaths from circulatory disease, under 75 years, indirectly standardised ratio per 100 (2016 - 20)	106.5	123.8	89.3	114.2	100
Deaths from coronary heart disease, indirectly standardised ratio per 100 (2016 - 20)	89.6	99.6	76.4	98.7	100
Deaths from stroke, indirectly standardised ratio per 100 (2016 - 20)	89.8	78.0	91.6	95.0	100
Deaths from respiratory diseases, indirectly standardised ratio per 100 (2016 - 20)	104.2	114.1	90.4	114.4	100
Deaths from causes considered preventable, under 75 years, indirectly standardised ratio per 100 (2016 - 20)	113.7	141.7	89.5	121.1	100

Source: Office for Health Improvement and Disparities. Public health profiles. 2025
<https://fingertips.phe.org.uk/> © Crown copyright 2025

Appendix II: Travel time maps

Figure 22: Pharmacies within 30-minute rush hour car journey, Bristol (with 1-mile buffer)

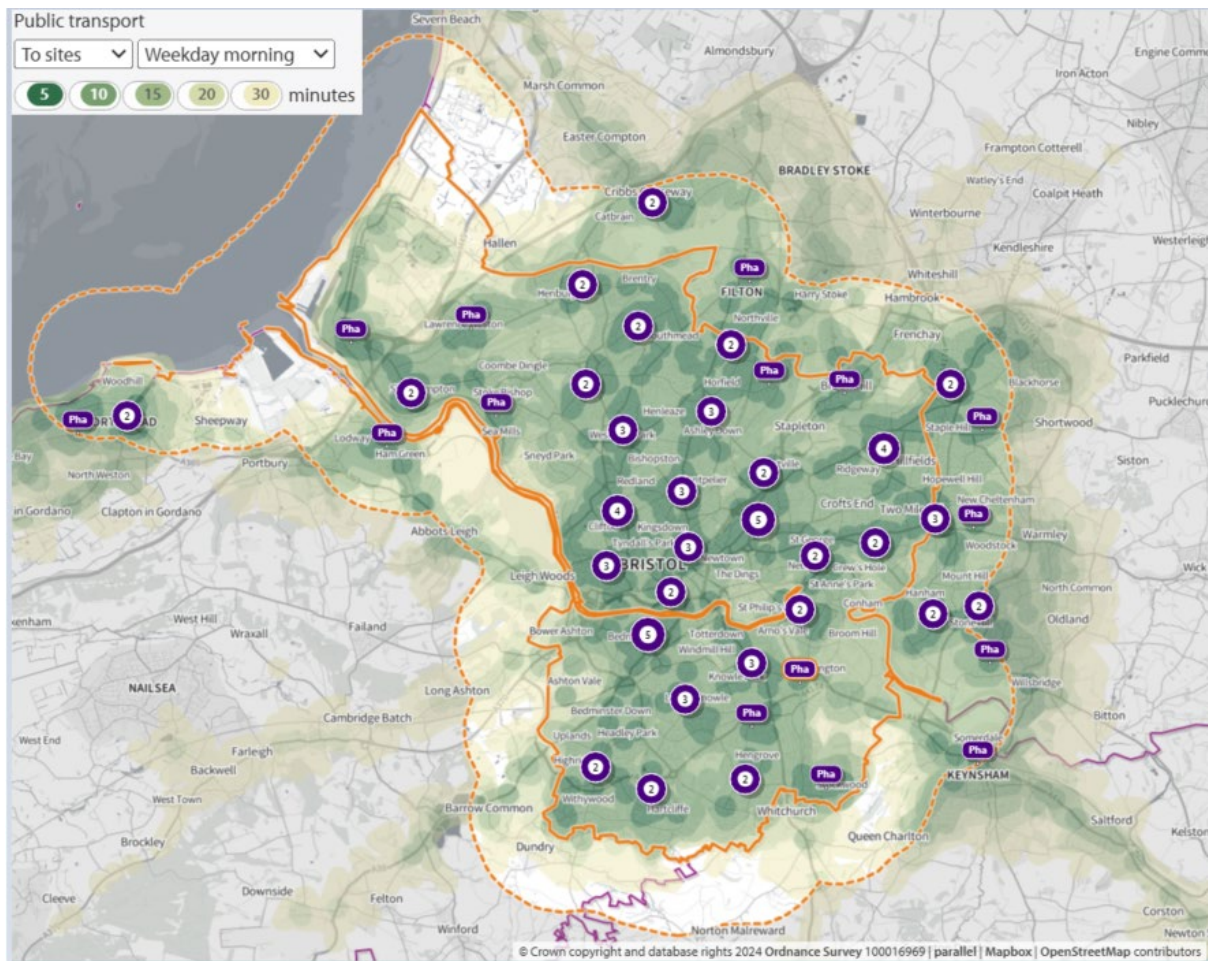


Key

Single community pharmacy

Number of pharmacies located too close together to be able to display

Figure 23: Pharmacies within 30-minute weekday morning public transport journey, Bristol (with 1-mile buffer)

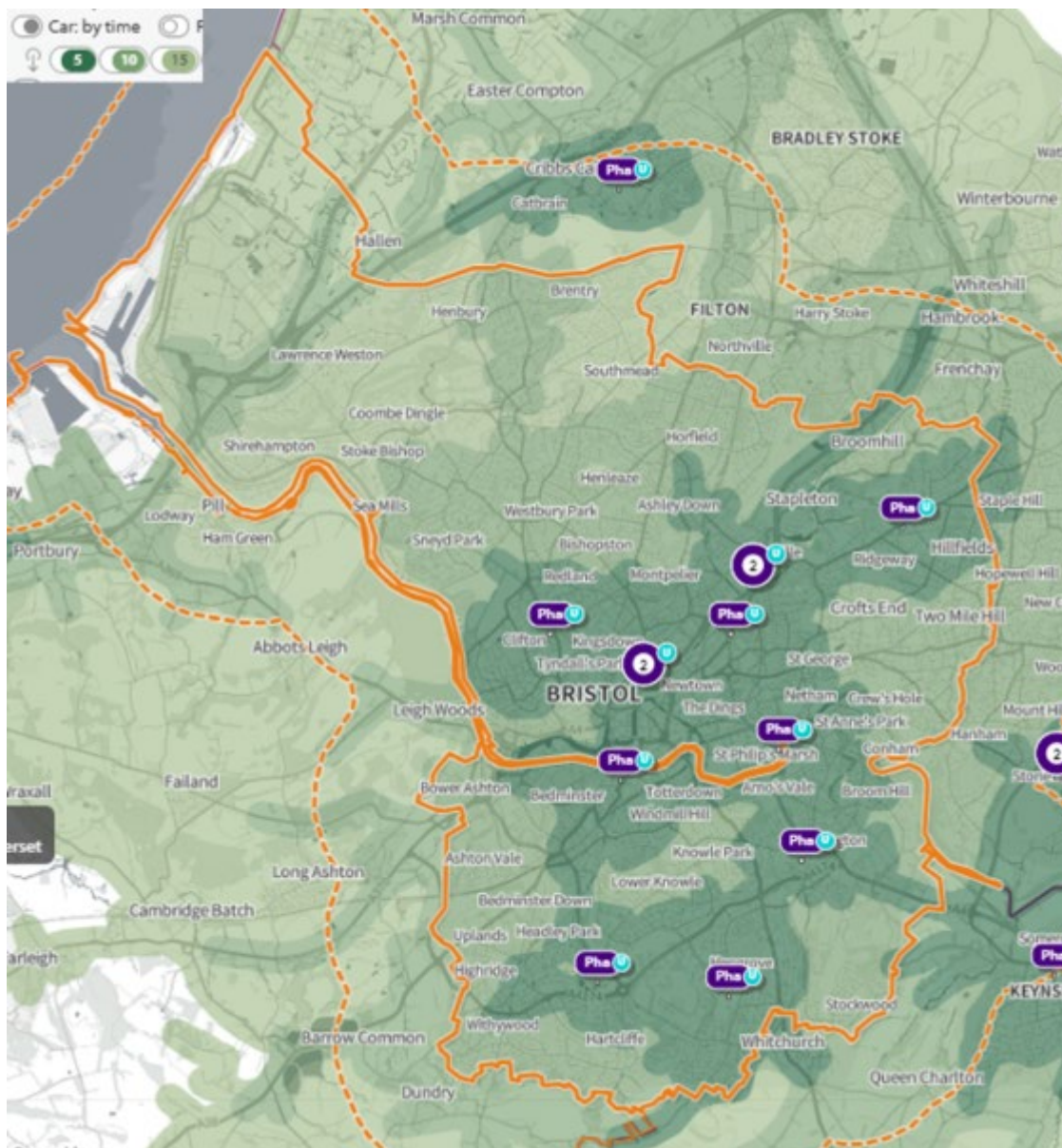


Key

 Single community pharmacy

 Number of pharmacies located too close together to be able to display

Figure 24: Car driving time – Sundays

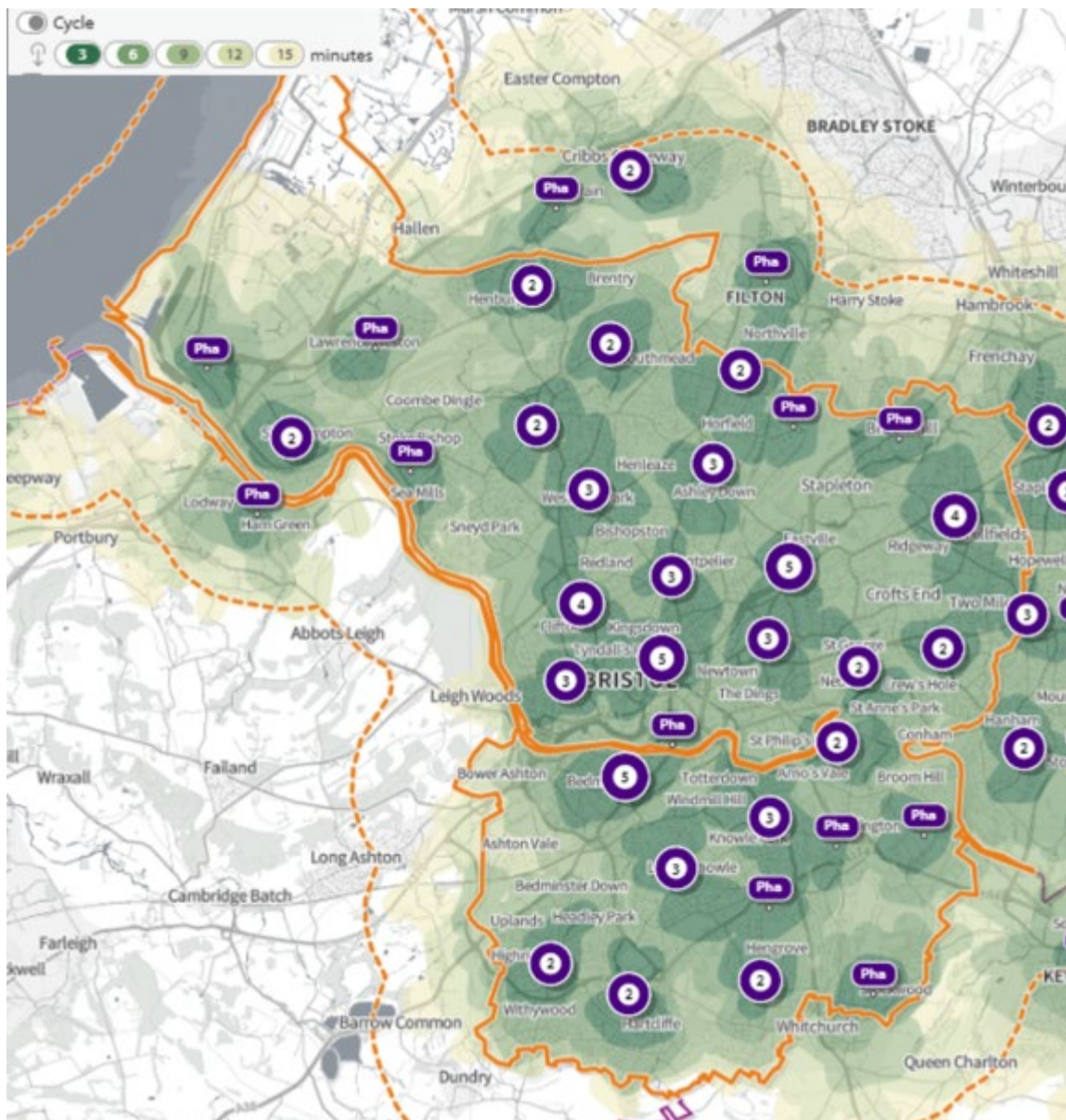


Key

 Single community pharmacy

 Number of pharmacies located too close together to be able to display

Figure 26: Cycle time to nearest pharmacy



Key

 Single community pharmacy

 Number of pharmacies located too close together to be able to display

Appendix III: Pharmacy details

Inner City and East Locality

ODS CODE	Trading Name	Address	Town	Postcode	Region	Ward	Opening Hours Monday	Opening Hours Tuesday	Opening Hours Wednesday	Opening Hours Thursday	Opening Hours Friday	Opening Hours Saturday	Opening Hours Sunday	Total Opening Hours
FN693	Air Balloon Pharmacy	Air Balloon surgery, Kenn Road	St George	BS5 7PD	Bristol	St George Central	09:00-18:00 09:00-18:00	09:00-18:00 09:00-18:00	09:00-18:00 09:00-18:00	09:00-18:00 09:00-18:00	09:00-18:00 09:00-18:00	Closed	Closed	49
FE060	Bhogal Dispensing Chemist	79-81 St Marks Road	Easton	BS5 6HX	Bristol	Easton	13:00,14:00-18:00	13:00,14:00-18:00	13:00,14:00-18:00	13:00,14:00-18:00	13:00,14:00-18:00	09:00-13:00	Closed	44
FLQ56	Boots Pharmacy	59 Broadmead	Broadmead	BS1 3EA	Bristol	Central	09:00-18:00	09:00-18:00	09:00-18:00	09:00-18:00	09:00-18:00	09:00-18:00	11:00-17:00	60
FP386	Boots Pharmacy	19-20 St Augustines Parade	The Centre	BS1 4UR	Bristol	Central	09:00-18:00	09:00-18:00	09:00-18:00	09:00-18:00	09:00-18:00	08:30-17:30	Closed	54
FXN96	Boots Pharmacy	Unit 1 Avonmeads Retail Park	St Philips Causeway	BS2 0SP	Bristol	Lawrence Hill	09:00-13:00,14:00-21:00	09:00-13:00,14:00-21:00	09:00-13:00,14:00-21:00	09:00-13:00,14:00-21:00	09:00-13:00,14:00-21:00	13:00,14:00-21:00	11:00-17:00	72
FYE01	Boots Pharmacy	47-49 Gloucester Road	Bishopston	BS7 8AD	Bristol	Ashley	09:00-17:30	09:00-17:30	09:00-17:30	09:00-17:30	09:00-17:30	09:00-17:30	Closed	50.5
FMV20	Boots Pharmacy	66 Queens Road, Clifton	Bristol	BS8 1QU	Bristol	Central	09:00-17:00	09:00-17:00	09:00-17:00	09:00-17:00	09:00-17:00	09:00-17:00	Closed	48
FG520	Easton Day & Night Chemist	192 Stapleton Road	Easton	BS5 0NY	Bristol	Lawrence Hill	09:00-21:00	09:00-21:00	09:00-21:00	09:00-21:00	09:00-21:00	09:00-21:00	09:00-22:00	85
FH449	Easton Pharmacy	116 Stapleton Road	Easton	BS5 0PS	Bristol	Lawrence Hill	09:00-13:30,14:30-18:30	09:00-13:30,14:30-18:30	09:00-13:30,14:30-18:30	09:00-13:30,14:30-18:30	09:00-13:30,14:30-18:30	09:00-17:00	Closed	50.5
FJ162	Eastville Pharmacy	East Trees Health Centre, 100a Fishponds Road	Eastville	BS5 6SA	Bristol	Eastville	08:30-18:30	08:30-18:30	08:30-18:30	08:30-18:30	08:30-18:30	09:00-13:00	Closed	54
FR280	Gloucester Road Pharmacy	23-25 Gloucester Road,	Bishopston	BS7 8AA	Bristol	Ashley	09:00-18:00	09:00-18:00	09:00-18:00	09:00-18:00	09:00-18:00	09:00-17:30	Closed	53.5
FQ150	Jhoots Pharmacy	Montpelier Health Centre, Bath Buildings	Montpelier	BS6 5PT	Bristol	Ashley	08:30-13:00,14:00-17:30	08:30-13:00,14:00-17:30	08:30-13:00,14:00-17:30	08:30-13:00,14:00-17:30	08:30-13:00,14:00-17:30	Closed	Closed	40
FH342	Jhoots Pharmacy	Fishponds Health Centre, Beechwood Road	Fishponds	BS16 3TD	Bristol	Frome Vale	09:00-18:30 08:45-18:30	09:00-18:30 08:45-18:30	09:00-18:30 08:45-18:30	09:00-18:30 08:45-18:30	09:00-18:30 08:45-18:30	Closed	Closed	47.5
FC24	Lawrence Hill Pharmacy	141 Lawrence Hill	Bristol	BS5 0BT	Bristol	Lawrence Hill	13:00,14:00-18:30	13:00,14:00-18:30	13:00,14:00-18:30	13:00,14:00-18:30	13:00,14:00-18:30	09:00-13:00	Closed	47.45
FHN34	Morrisons Pharmacy	668-718 Fishponds Road	Fishponds	BS16 3US	Bristol	Frome Vale	09:00-19:00	09:00-19:00	09:00-19:00	09:00-19:00	09:00-19:00	09:00-19:00	10:00-16:00	65
FVT23	Redcliffe Hill Pharmacy	8 Waring House	Redcliffe	BS1 6TB	Bristol	Central	09:00-18:00	09:00-18:00	09:00-18:00	09:00-18:00	09:00-18:00	09:00-13:00	Closed	49
FDA83	Redfield Pharmacy	235 Church Road	Redfield	BS5 9HL	Bristol	Easton	09:00-17:30	09:00-17:30	09:00-17:30	09:00-17:30	09:00-17:30	09:00-17:30	Closed	51
FVE72	Stapleton Pharmacy	5 Frome Valley Road	Stapleton	BS16 1HD	Bristol	Frome Vale	09:00-13:00,14:15-17:30	09:00-13:00,14:15-17:30	09:00-13:00,14:15-17:30	09:00-13:00,14:15-17:30	09:00-13:00,14:15-17:30	09:00-13:00	Closed	40.25
FEV24	Stokes Croft Pharmacy	Unit 2, Avonmead House, 40-48 Stokes Croft	Stokes Croft	BS1 3QD	Bristol	Ashley	09:00-18:00	09:00-18:00	09:00-18:00	09:00-18:00	09:00-18:00	10:00-14:00	10:00-12:00	51
FW06	Superdrug Pharmacy	39-43 Broadmead	Broadmead	BS1 3EU	Bristol	Central	08:30-14:00,14:30-17:30	08:30-14:00,14:30-17:30	08:30-14:00,14:30-17:30	08:30-14:00,14:30-17:30	08:30-14:00,14:30-17:30	09:00-17:30	Closed	51
FJ494	The Old School Pharmacy	The Old School surgery, Manor Road	Fishponds	BS16 2JD	Bristol	Frome Vale	09:00-13:00,14:00-18:00	09:00-13:00,14:00-18:00	09:00-13:00,14:00-18:00	09:00-13:00,14:00-18:00	09:00-13:00,14:00-18:00	Closed	Closed	40
FAG83	Well Pharmacy	22a Lodgeside Avenue	Kingswood	BS15 1NH	Bristol	Hillfields	09:00-13:00,14:00-18:00	09:00-13:00,14:00-18:00	09:00-13:00,14:00-18:00	09:00-13:00,14:00-18:00	09:00-13:00,14:00-18:00	Closed	Closed	40
FXM29	Well Pharmacy	306 Lodge Causeway	Fishponds	BS16 3RD	Bristol	Hillfields	09:00-18:00	09:00-18:00	09:00-18:00	09:00-18:00	09:00-18:00	09:00-12:00	Closed	48
FQ826	Well Pharmacy	St George Health Centre, Bellevue Road	St George	BS5 7PH	Bristol	St George Central	09:00-18:00	09:00-18:00	09:00-18:00	09:00-18:00	09:00-18:00	Closed	Closed	45

North and West Locality

ODS CODE	Trading Name	Address	Town	Postcode	Opening Hours Monday	Opening Hours Tuesday	Opening Hours Wednesday	Opening Hours Thursday	Opening Hours Friday	Opening Hours Saturday	Opening Hours Sunday	Total Opening Hours
FA613	Ashgrove Pharmacy	97-99 Ashley Down Road	Horfield	BS7 9JT	09:00-18:00	09:00-18:00	09:00-18:00	09:00-18:00	09:00-18:00	09:00-13:00	Closed	49
FG103	Avonmouth Pharmacy	205 Avonmouth Road	Avonmouth	BS11 9EG	09:00-18:00	09:00-18:00	09:00-18:00	09:00-18:00	09:00-18:00	Closed	Closed	45
FGF03	Boots Pharmacy	Eastgate Retail Park	Eastville	BS5 6XX	09:00-17:00	09:00-17:00	09:00-17:00	09:00-17:00	09:00-17:00	09:00-17:00	10:00-16:00	54
FNP44	Boots Pharmacy	9 Clifton Down Shopping Centre, Whiteladies Road	Clifton	BS8 2NN	09:00-18:30	09:00-18:30	09:00-18:30	09:00-18:30	09:00-18:30	09:00-18:00	11:00-17:00	62.5
FHF65	Boots Pharmacy	55 Henleaze Road	Westbury-on-Trym	BS9 4JT	09:00-13:00,14:00-17:30	09:00-13:00,14:00-17:30	09:00-13:00,14:00-17:30	09:00-13:00,14:00-17:30	09:00-13:00,14:00-17:30	09:00-13:00,14:00-17:30	Closed	45
FW834	Buxton & Grant	176 Whiteladies Road	Clifton	BS8 2XU	09:00-18:00	09:00-18:00	09:00-18:00	09:00-18:00	09:00-18:00	13:00,13:30-15:30	Closed	51
FQT16	Clifton Village Pharmacy	10 Princess Victoria Street	Clifton	BS8 4BP	09:00-13:30,14:00-17:30	09:00-13:30,14:00-17:30	09:00-13:30,14:00-17:30	09:00-13:30,14:00-17:30	09:00-13:30,14:00-17:30	09:00-14:00	Closed	45
FNN87	Cotham Pharmacy	3-5 Cotham Hill	Cotham	BS6 6LD	09:00-18:00	09:00-18:00	09:00-18:00	09:00-18:00	09:00-18:00	09:00-13:00	Closed	49
FHF82	Day Lewis Pharmacy	6 Arnside Road	Southmead	BS10 6AT	09:00-18:00	09:00-18:00	09:00-18:00	09:00-18:00	09:00-18:00	09:00-17:30	Closed	53.5
FWN32	Day Lewis Pharmacy	1 Trevelyan Walk	Henbury	BS10 7NY	13:00,14:00-18:30	13:00,14:00-18:30	13:00,14:00-18:30	13:00,14:00-18:30	13:00,14:00-18:00	Closed	Closed	44.5
FC582	Greenway Pharmacy	Greenway Centre, Doncaster Road	Southmead	BS10 5PY	09:00-18:00	09:00-18:00	09:00-18:00	09:00-18:00	09:00-18:00	09:00-13:00	Closed	49
FJ726	Jhoots Pharmacy	3 Gainsborough Square	Lockleaze	BS7 9XA	09:00-13:00,14:00-18:00	09:00-13:00,14:00-18:00	09:00-13:00,14:00-18:00	09:00-13:00,14:00-18:00	09:00-13:00,14:00-18:00	Closed	Closed	40
FWR39	Jhoots Pharmacy	Westbury Medical Centre, Westbury Hill	Westbury-on-Trym	BS9 3AA	09:00-13:00,14:00-18:00	09:00-13:00,14:00-18:00	09:00-13:00,14:00-18:00	09:00-13:00,14:00-18:00	09:00-13:00,14:00-18:00	Closed	Closed	40
FE606	Kellaway Pharmacy	18 Kellaway Avenue	Horfield	BS6 7XR	09:00-13:00,14:00-18:00	09:00-13:00,14:00-18:00	09:00-13:00,14:00-18:00	09:00-13:00,14:00-18:00	09:00-13:00,14:00-18:00	09:00-13:00	Closed	44
FVC63	Lawrence Weston Pharmacy	62 Ridingleaze	Lawrence Weston	BS11 0QB	09:00-13:00,14:00-18:00	09:00-13:00,14:00-18:00	09:00-13:00,14:00-18:00	09:00-13:00,14:00-18:00	09:00-13:00,14:00-18:00	09:00-13:00	Closed	44
FN257	Magna Pharmacy Henbury	Bradgate surgery, Ardenton Walk	Henbury	BS10 6SP	09:00-18:30	09:00-18:30	09:00-18:30	09:00-18:30	09:00-18:30	09:00-17:30	Closed	56
FKJ74	Magna Pharmacy Shirehampton	39 High Street	Shirehampton	BS11 0DX	09:00-18:30	09:00-18:30	09:00-18:30	09:00-18:30	09:00-18:30	09:00-15:00	Closed	53.5
FPV09	North View Pharmacy	29 North View	Westbury Park	BS6 7PT	09:00-13:00,14:00-18:00	09:00-13:00,14:00-18:00	09:00-13:00,14:00-18:00	09:00-13:00,14:00-18:00	09:00-13:00,14:00-18:00	09:00-13:00	Closed	44
FA92	Regent Pharmacy Clifton	13 Regent Street	Clifton	BS8 4HW	09:00-17:30	09:00-17:30	09:00-17:30	09:00-17:30	09:00-17:30	09:00-14:00	Closed	47.5
FRF85	Shirehampton Pharmacy	Shirehampton Health Centre, Pembroke Road	Shirehampton	BS11 9SB	09:00-18:30	09:00-18:30	09:00-18:30	09:00-18:30	09:00-18:30	09:00-13:00	Closed	51.5
FM723	Sood Chemist	1b Church Road	Horfield	BS7 8SA	08:30-13:00,14:00-18:30	08:30-13:00,14:00-18:30	08:30-13:00,14:00-18:30	08:30-13:00,14:00-18:30	08:30-13:00,14:00-18:30	08:30-11:30	Closed	48
FG915	Tesco In-Store Pharmacy	The Eastgate Centre	Eastville	BS5 6XU	08:00-20:00	08:00-20:00	08:00-20:00	08:00-20:00	08:00-20:00	08:00-20:00	10:00-16:00	78
FHF93	Well Pharmacy	36 Filton Road	Horfield	BS7 0PB	09:00-18:00	09:00-18:00	09:00-18:00	09:00-18:00	09:00-18:00	09:00-12:00	Closed	48
FTW66	Well Pharmacy	Horfield Health Centre, 10 Lockleaze Road	Horfield	BS7 9RR	08:30-18:00	08:30-18:00	08:30-18:00	08:30-18:00	08:30-18:00	Closed	Closed	47.5
FNV78	Well Pharmacy	Sea Mills surgery, 2 Riverleaze	Sea Mills	BS9 2HL	08:30-18:00	08:30-18:00	08:30-18:00	08:30-18:00	08:30-18:00	09:30-12:00	Closed	50
FDL24	Westbury Pharmacy	2 Charlecombe Court	Westbury-on-Trym	BS9 3RL	09:00-13:00,14:00-18:00	09:00-13:00,14:00-18:00	09:00-13:00,14:00-18:00	09:00-13:00,14:00-18:00	09:00-13:00,14:00-18:00	09:00-13:00	Closed	44
FQW92	Whiteladies Pharmacy	Whiteladies Medical Centre, Whatley Road	Clifton	BS8 2PU	09:00-13:00,14:00-18:00	09:00-13:00,14:00-18:00	09:00-13:00,14:00-18:00	09:00-13:00,14:00-18:00	09:00-13:00,14:00-18:00	09:00-12:00	Closed	43

ODS CODE	Trading Name	Address	Town	Postcode	DAC	Distance Selling	40 Hour Contract	100 Hour Contract	LPS	Pharmacy First	NMS	Hypertension Case Finding	Smoking Cessation	Contraception Service	LFT	Flu (24/25)	Stoma Appliance customisation	Appliance Usage Reviews	Lateral Flow Dist service
FA613	Ashgrove Pharmacy	97-99 Ashley Down Road	Horfield	BS7 9HT	No	No	Yes	No	No	Yes	Yes	Yes	No	No	No	Yes	No	No	Yes
FG103	Avonmouth Pharmacy	205 Avonmouth Road	Avonmouth	BS11 9EG	No	No	Yes	No	No	Yes	Yes	Yes	No	No	Yes	Yes	No	No	Yes
FGEO3	Boots Pharmacy	Eastgate Retail Park	Eastville	BS5 6XX	No	No	Yes	No	No	Yes	Yes	Yes	No	Yes	Yes	Yes	No	No	Yes
FNP44	Boots Pharmacy	9 Clifton Down Shopping Centre, Whiteladies Road	Clifton	BS8 2NN	No	No	Yes	No	No	Yes	Yes	Yes	No	Yes	Yes	Yes	No	No	Yes
FHF65	Boots Pharmacy	55 Henleaze Road	Westbury-on-Trym	BS9 4JT	No	No	Yes	No	No	Yes	Yes	Yes	No	Yes	No	Yes	No	No	No
FW634	Buxton & Grant	176 Whiteladies Road	Clifton	BS8 2XU	No	No	Yes	No	No	Yes	Yes	Yes	No	Yes	Yes	Yes	No	No	Yes
FQT16	Clifton Village Pharmacy	10 Princess Victoria Street	Clifton	BS8 4BP	No	No	Yes	No	No	Yes	Yes	Yes	No	No	Yes	Yes	No	No	Yes
FNN87	Cotham Pharmacy	3-5 Cotham Hill	Cotham	BS6 6LD	No	No	Yes	No	No	Yes	Yes	No	No	Yes	No	Yes	No	No	No
FHF82	Day Lewis Pharmacy	6 Arnside Road	Southmead	BS10 6AT	No	No	Yes	No	No	Yes	Yes	Yes	No	Yes	Yes	Yes	No	No	Yes
FWN32	Day Lewis Pharmacy	1 Trevelyan Walk	Henbury	BS10 7NY	No	No	Yes	No	No	Yes	Yes	Yes	No	Yes	Yes	Yes	No	No	Yes
FC582	Greenway Pharmacy	Greenway Centre, Doncaster Road	Southmead	BS10 5PY	No	No	Yes	No	No	Yes	Yes	Yes	Yes	Yes	Yes	Yes	No	No	Yes
FJ726	Jhoots Pharmacy	3 Gainsborough Square	Lockleaze	BS7 9XA	No	No	Yes	No	No	Yes	Yes	Yes	Yes	Yes	Yes	Yes	No	No	Yes
FWR39	Jhoots Pharmacy	Westbury Medical Centre, Westbury Hill	Westbury-on-Trym	BS9 3AA	No	No	Yes	No	No	Yes	Yes	Yes	Yes	No	Yes	No	No	No	Yes
FE606	Kellaway Pharmacy	18 Kellaway Avenue	Horfield	BS6 7XR	No	No	Yes	No	No	Yes	Yes	Yes	Yes	Yes	No	Yes	No	No	No
FVC63	Lawrence Weston Pharmacy	62 Ridingleaze	Lawrence Weston	BS11 0QB	No	No	Yes	No	No	Yes	Yes	Yes	No	Yes	Yes	Yes	No	No	No
FN257	Magna Pharmacy Henbury	Bradgate surgery, Ardenton Walk	Henbury	BS10 6SP	No	No	Yes	No	No	Yes	Yes	Yes	No	No	Yes	Yes	No	No	No
FKJ74	Magna Pharmacy Shirehampton	39 High Street	Shirehampton	BS11 0DX	No	No	Yes	No	No	Yes	Yes	Yes	No	No	Yes	Yes	No	No	No
FPV09	North View Pharmacy	29 North View	Westbury Park	BS6 7PT	No	No	Yes	No	No	Yes	Yes	Yes	No	No	Yes	Yes	No	No	Yes
FA957	Regent Pharmacy Clifton	13 Regent Street	Clifton	BS8 4HW	No	No	Yes	No	No	Yes	Yes	No	No	No	Yes	No	No	No	Yes
FRE85	Shirehampton Pharmacy	Shirehampton Health Centre, Pembroke Road	Shirehampton	BS11 96B	No	No	Yes	No	No	Yes	Yes	Yes	No	Yes	Yes	Yes	No	No	Yes
FM723	Sood Chemist	1b Church Road	Horfield	BS7 8SA	No	No	Yes	No	No	Yes	Yes	No	No	No	No	Yes	No	No	No
FG915	Tesco In-Store Pharmacy	The Eastgate Centre	Eastville	BS5 6XU	No	No	Yes	No	No	Yes	Yes	Yes	No	Yes	Yes	Yes	No	No	Yes
FHE93	Well Pharmacy	36 Filton Road	Horfield	BS7 0PB	No	No	Yes	No	No	Yes	Yes	Yes	Yes	Yes	Yes	Yes	No	No	Yes
FTW66	Well Pharmacy	Horfield Health Centre, 10 Lockleaze Road	Horfield	BS7 9RR	No	No	Yes	No	No	Yes	Yes	Yes	Yes	Yes	Yes	Yes	No	No	Yes
FNV78	Well Pharmacy	Sea Mills surgery, 2 Riverleaze	Sea Mills	BS9 2HL	No	No	Yes	No	No	Yes	Yes	Yes	Yes	Yes	Yes	Yes	No	No	Yes
FDL34	Westbury Pharmacy	2 Charlecombe Court	Westbury-on-Trym	BS9 3RL	No	No	Yes	No	No	Yes	Yes	Yes	Yes	Yes	Yes	No	No	No	Yes
FQW92	Whiteladies Pharmacy	Whiteladies Medical Centre, Whatley Road	Clifton	BS8 2PU	No	No	Yes	No	No	Yes	Yes	Yes	Yes	Yes	No	Yes	No	No	Yes

South Locality

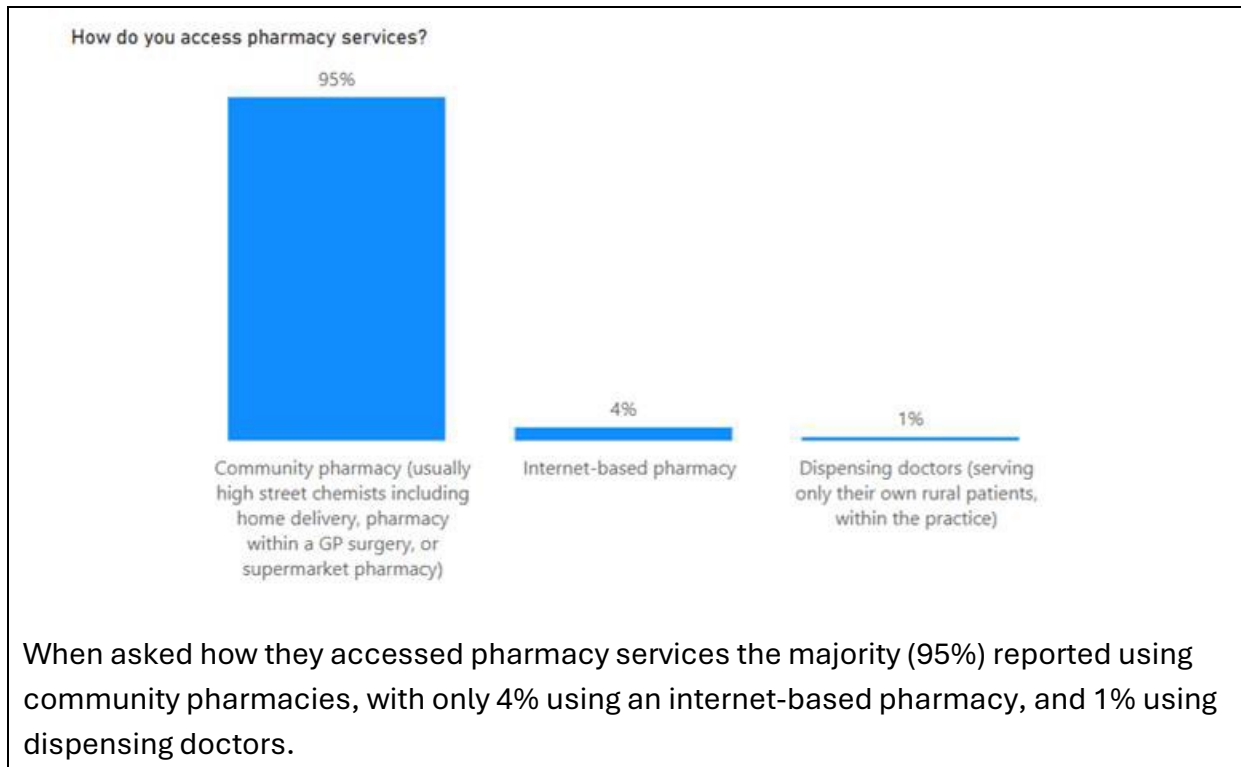
ODS CODE	Trading Name	Address	Town	Postcode	Opening Hours Monday	Opening Hours Tuesday	Opening Hours Wednesday	Opening Hours Thursday	Opening Hours Friday	Opening Hours Saturday	Opening Hours Sunday	Total Opening Hours
FRD73	Asda Pharmacy	Oatlands Avenue	Whitchurch	BS14 0ST	09:00-12:30,13:00-16:30,17:00-21:00	09:00-12:30,13:00-16:30,17:00-21:00	09:00-12:30,13:00-16:30,17:00-21:00	09:00-12:30,13:00-16:30,17:00-21:00	09:00-12:30,13:00-16:30,17:00-21:00	09:00-12:30,13:00-16:30,17:00-21:00	10:00-16:00	72
FNW08	Asda Pharmacy	East Street	Bedminster	BS3 4JY	09:00-12:30,13:00-16:30,17:00-21:00	09:00-12:30,13:00-16:30,17:00-21:00	09:00-12:30,13:00-16:30,17:00-21:00	09:00-12:30,13:00-16:30,17:00-21:00	09:00-12:30,13:00-16:30,17:00-21:00	09:00-12:30,13:00-16:30,17:00-21:00	10:00-16:00	72
FWT18	Avicenna Pharmacy	3a-4a St Peters Rise	Bishopsworth	BS13 7LU	09:00-13:00,14:00-18:00	09:00-13:00,14:00-18:00	09:00-13:00,14:00-18:00	09:00-13:00,14:00-18:00	09:00-13:00,14:00-18:00	09:00-13:00	Closed	44
FRA45	Badham Pharmacy	45 Fitwood Broadway	Knowle	BS4 1JL	08:30-18:00	08:30-18:00	08:30-18:00	08:30-18:00	08:30-18:00	08:30-13:00	Closed	52
FMQ67	Bedminster Pharmacy	4-6 Cannon Street	Bedminster	BS3 1BN	09:00-13:00,14:00-18:00	09:00-13:00,14:00-18:00	09:00-13:00,14:00-18:00	09:00-13:00,14:00-18:00	09:00-13:00,14:00-18:00	09:00-13:00	Closed	44
FW497	Bishopsworth Pharmacy	135-137 Church Road	Bishopsworth	BS13 8JZ	09:00-18:00	09:00-18:00	09:00-18:00	09:00-18:00	09:00-18:00	09:00-13:00	Closed	49
FNK97	Boots Pharmacy	Imperial Retail Park	Hartcliffe	BS13 7TJ	09:00-14:00,14:30-20:00	09:00-14:00,14:30-20:00	09:00-14:00,14:30-20:00	09:00-14:00,14:30-20:00	09:00-14:00,14:30-20:00	09:00-14:00,14:30-19:00	10:30-16:30	68
FH206	Boots Pharmacy	5 Langton Road	St Anne's	BS4 4EW	09:00-13:00,14:00-18:30	09:00-13:00,14:00-18:30	09:00-13:00,14:00-18:30	09:00-13:00,14:00-18:30	09:00-13:00,14:00-18:30	09:00-12:30	Closed	46
FND81	Bristol Pharmacy	Whitchurch Health Centre, Armada Road	Whitchurch	BS14 0SU	09:00-18:30	09:00-18:30	09:00-18:30	09:00-18:30	09:00-18:30	09:00-17:00	Closed	55.5
FJR70	Bristol Pharmacy	74-76 Hollway Road	Stockwood	BS14 8PG	09:00-19:00	09:00-19:00	09:00-19:00	09:00-19:00	09:00-19:00	09:00-17:30	Closed	58.5
FPQ26	Hengrove Pharmacy	9 The Parade, Hengrove Lane	Hengrove	BS14 9DB	09:00-18:00	09:00-18:00	09:00-18:00	09:00-18:00	09:00-18:00	09:00-13:00	Closed	49
FR029	Jhoots Pharmacy	5 Avon Village	St Anne's Park	BS4 4WW	09:00-13:00,14:00-18:00	09:00-13:00,14:00-18:00	09:00-13:00,14:00-18:00	09:00-13:00,14:00-18:00	09:00-13:00,14:00-18:00	Closed	Closed	40
FDMS2	Knowle Pharmacy	Broadwalk shopping centre, 335 Wells Road	Knowle	BS4 2QB	09:00-18:00	09:00-18:00	09:00-18:00	09:00-18:00	09:00-18:00	09:00-13:00	Closed	49
FW478	Knowle West Pharmacy	William Budd Health Centre, 2 Knowle West Health Park, Downton Road	Knowle	BS4 1WH	09:00-18:30	09:00-18:30	09:00-18:30	09:00-18:30	09:00-18:30	09:00-13:00	Closed	51.5
FL669	Marksbury Road Pharmacy	Marksbury Road Health Centre, Marksbury Road	Bedminster	BS3 5JL	09:00-18:30	09:00-18:30	09:00-18:30	09:00-18:30	09:00-18:30	09:00-13:00	Closed	51.5
FXP06	North Street Pharmacy	244-246 North Street	Ashton Gate	BS3 1JD	09:00-18:00	09:00-18:00	09:00-18:00	09:00-18:00	09:00-18:00	09:00-17:30	Closed	53.5
FLT92	Silverman Chemist	180a Wells Road	Knowle	BS4 2AL	09:00-18:00	09:00-18:00	09:00-18:00	09:00-18:00	09:00-18:00	09:00-17:00	Closed	53
FXM91	Superdrug Pharmacy	44-46 East Street	Bedminster	BS3 4HD	09:00-13:30,14:00-17:30	09:00-13:30,14:00-17:30	09:00-13:30,14:00-17:30	09:00-13:30,14:00-17:30	09:00-13:30,14:00-17:30	09:00-13:30,14:00-17:30	Closed	48
FTV41	Superdrug Pharmacy	Broadwalk Shopping Centre, 339-341 Wells Road	Knowle	BS4 2QB	08:30-13:00,13:30-17:30	08:30-13:00,13:30-17:30	08:30-13:00,13:30-17:30	08:30-13:00,13:30-17:30	08:30-13:00,13:30-17:30	08:30-13:00,13:30-17:30	Closed	50.5
FT056	Tesco In-Store Pharmacy	Callington Road	Brislington	BS4 5AY	08:30-20:00	08:30-20:00	08:30-20:00	08:30-20:00	08:30-20:00	08:30-20:00	10:00-16:00	75
FWR01	Well Pharmacy	Hartcliffe Health Centre, Hareclive Road	Hartcliffe	BS13 0JP	09:00-18:00	09:00-18:00	09:00-18:00	09:00-18:00	09:00-18:00	Closed	Closed	47.5
FVN17	Well Pharmacy	90a North Street	Bedminster	BS3 1HF	09:00-18:00	09:00-18:00	09:00-18:00	09:00-18:00	09:00-18:00	Closed	Closed	45

ODS CODE	Trading Name	Address	Town	Postcode	DAC	Distance Selling	40 Hour Contract	100 Hour Contract	LPS	Pharmacy First	NMS	Hypertension Case Finding	Smoking Cessation	Contraception Service	LFT	Flu (24/25)	Stoma Appliance customisation	Appliance Usage Reviews	Lateral Flow Dist service
FRD73	Asda Pharmacy	Oatlands Avenue	Whitchurch	BS14 0ST	No	No	No	Yes	No	Yes	Yes	Yes	No	Yes	Yes	No	No	No	Yes
FNW08	Asda Pharmacy	East Street	Bedminster	BS3 4JY	No	No	No	Yes	No	Yes	Yes	Yes	No	Yes	Yes	Yes	No	No	Yes
FWT18	Avicenna Pharmacy	3a-4a St Peters Rise	Bishopsworth	BS13 7LU	No	No	Yes	No	No	Yes	Yes	Yes	No	Yes	Yes	No	No	No	Yes
FRA45	Badham Pharmacy	45 Filwood Broadway	Knowle	BS4 1JL	No	No	Yes	No	No	Yes	Yes	Yes	Yes	Yes	Yes	Yes	No	No	Yes
FHQ67	Bedminster Pharmacy	4-6 Cannon Street	Bedminster	BS3 1BN	No	No	Yes	No	No	Yes	Yes	Yes	Yes	Yes	No	Yes	No	No	No
FW497	Bishopsworth Pharmacy	135-137 Church Road	Bishopsworth	BS13 8UZ	No	No	Yes	No	No	Yes	Yes	Yes	Yes	Yes	Yes	Yes	No	No	Yes
FNK97	Boots Pharmacy	Imperial Retail Park	Hartcliffe	BS13 7TJ	No	No	Yes	No	No	Yes	Yes	Yes	No	Yes	Yes	Yes	No	No	Yes
FH206	Boots Pharmacy	5 Langton Road	St Anne's	BS4 4EW	No	No	Yes	No	No	Yes	Yes	Yes	No	Yes	Yes	No	No	No	Yes
FND81	Bristol Pharmacy	Whitchurch Health Centre, Armada Road	Whitchurch	BS14 0SU	No	No	Yes	No	No	Yes	Yes	No	No	Yes	Yes	No	No	No	Yes
FJR70	Bristol Pharmacy	74-76 Holway Road	Stockwood	BS14 8PG	No	No	Yes	No	No	Yes	Yes	Yes	No	Yes	Yes	No	No	No	Yes
FPQ26	Hengrove Pharmacy	9 The Parade, Hengrove Lane	Hengrove	BS14 9DB	No	No	Yes	No	No	Yes	Yes	Yes	No	Yes	No	Yes	No	No	Yes
FR029	Jhoots Pharmacy	5 Avon Village	St Anne's Park	BS4 4WW	No	No	Yes	No	No	Yes	Yes	Yes	Yes	Yes	Yes	Yes	No	No	Yes
FDM92	Knowle Pharmacy	Broadwalk shopping centre, 335 Wells Road	Knowle	BS4 2QB	No	No	Yes	No	No	Yes	Yes	No	Yes	No	No	Yes	No	No	No
FW478	Knowle West Pharmacy	William Budd Health Centre, 2 Knowle West Health Park, Downton Road	Knowle	BS4 1WH	No	No	Yes	No	No	Yes	Yes	Yes	No	No	Yes	Yes	No	No	Yes
FL669	Marksbury Road Pharmacy	Marksbury Road Health Centre, Marksbury Road	Bedminster	BS3 5JL	No	No	Yes	No	No	Yes	Yes	Yes	Yes	Yes	Yes	Yes	No	No	Yes
FXP06	North Street Pharmacy	244-246 North Street	Ashton Gate	BS3 1JD	No	No	Yes	No	No	Yes	Yes	Yes	Yes	Yes	Yes	No	No	No	Yes
FLT92	Silverman Chemist	180a Wells Road	Knowle	BS4 2AL	No	No	Yes	No	No	Yes	Yes	Yes	No	Yes	Yes	No	No	No	Yes
FXM91	Superdrug Pharmacy	44-46 East Street	Bedminster	BS3 4HD	No	No	Yes	No	No	Yes	Yes	Yes	Yes	Yes	Yes	Yes	No	No	Yes
FTV41	Superdrug Pharmacy	Broadwalk Shopping Centre, 335-341 Wells Road	Knowle	BS4 2QB	No	No	Yes	No	No	Yes	Yes	Yes	Yes	Yes	Yes	No	No	No	Yes
FT056	Tesco In-Store Pharmacy	Callington Road	Brislington	BS4 5AY	No	No	Yes	No	No	Yes	Yes	Yes	No	Yes	Yes	No	No	No	Yes
FWR01	Well Pharmacy	Hartcliffe Health Centre, Hareclive Road	Hartcliffe	BS13 0JP	No	No	Yes	No	No	Yes	Yes	Yes	Yes	Yes	Yes	No	No	No	Yes
FWN17	Well Pharmacy	90a North Street	Bedminster	BS3 1HF	No	No	Yes	No	No	Yes	Yes	Yes	Yes	Yes	Yes	No	No	No	Yes

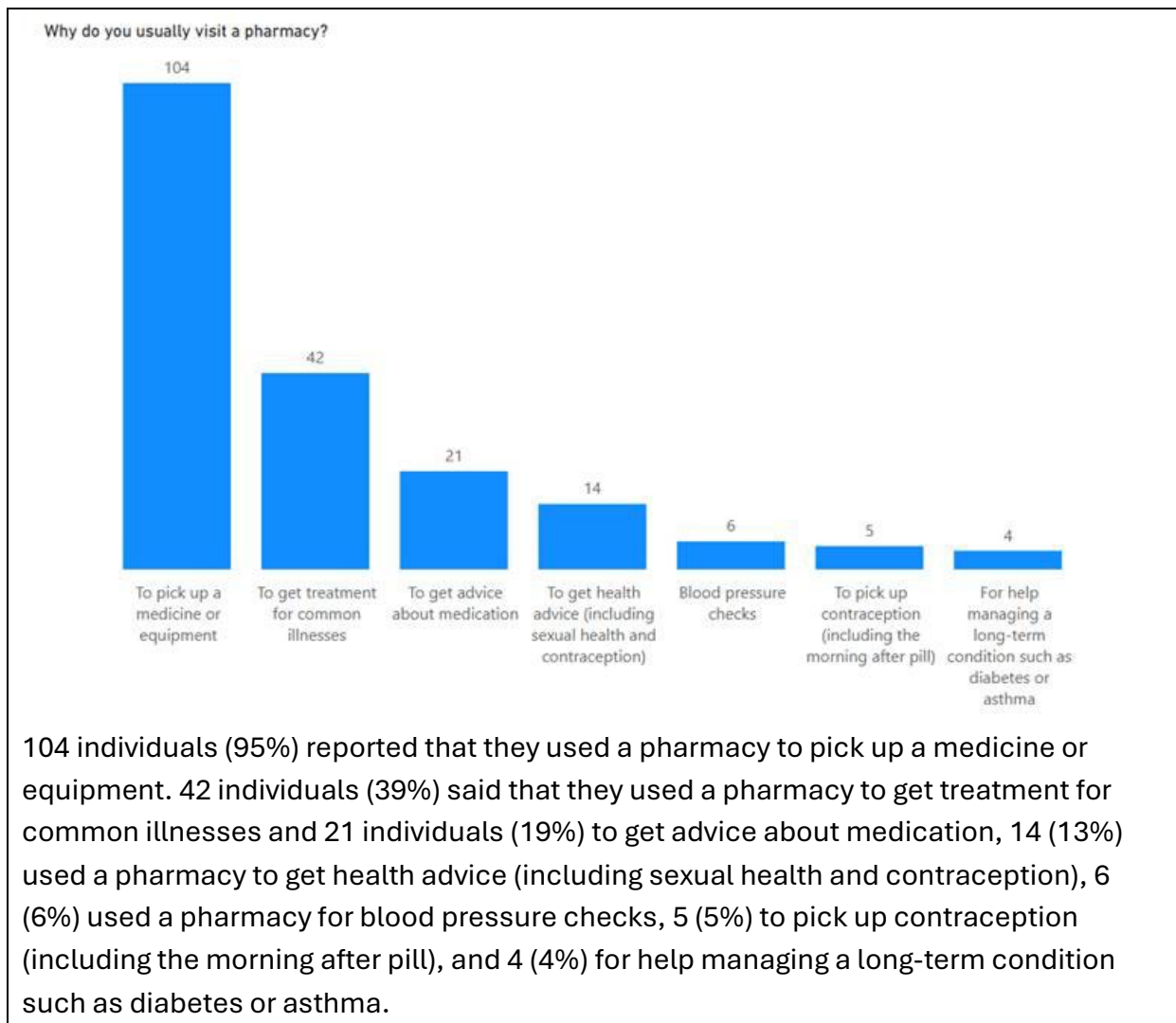
Appendix IV: Results of survey

109 individuals in Bristol responded to the survey.

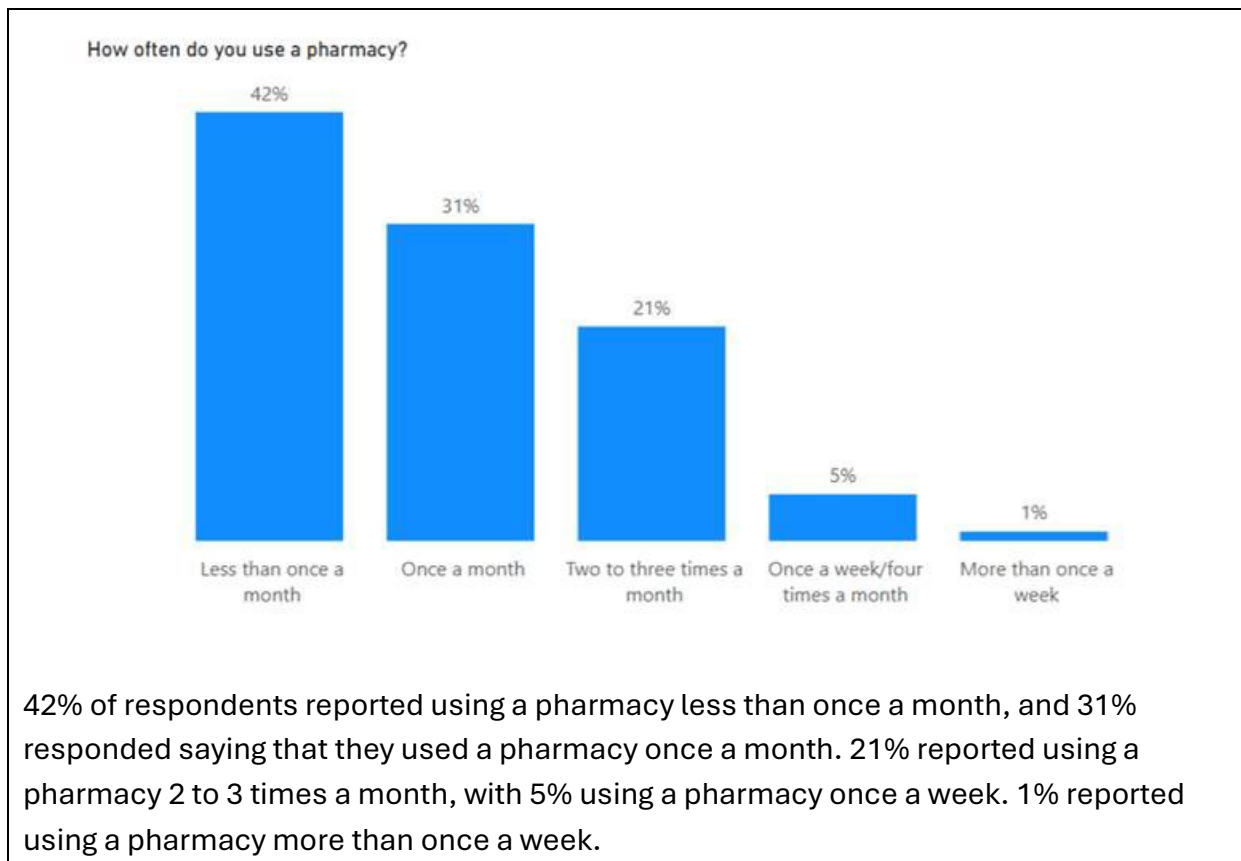
Access to pharmacy services



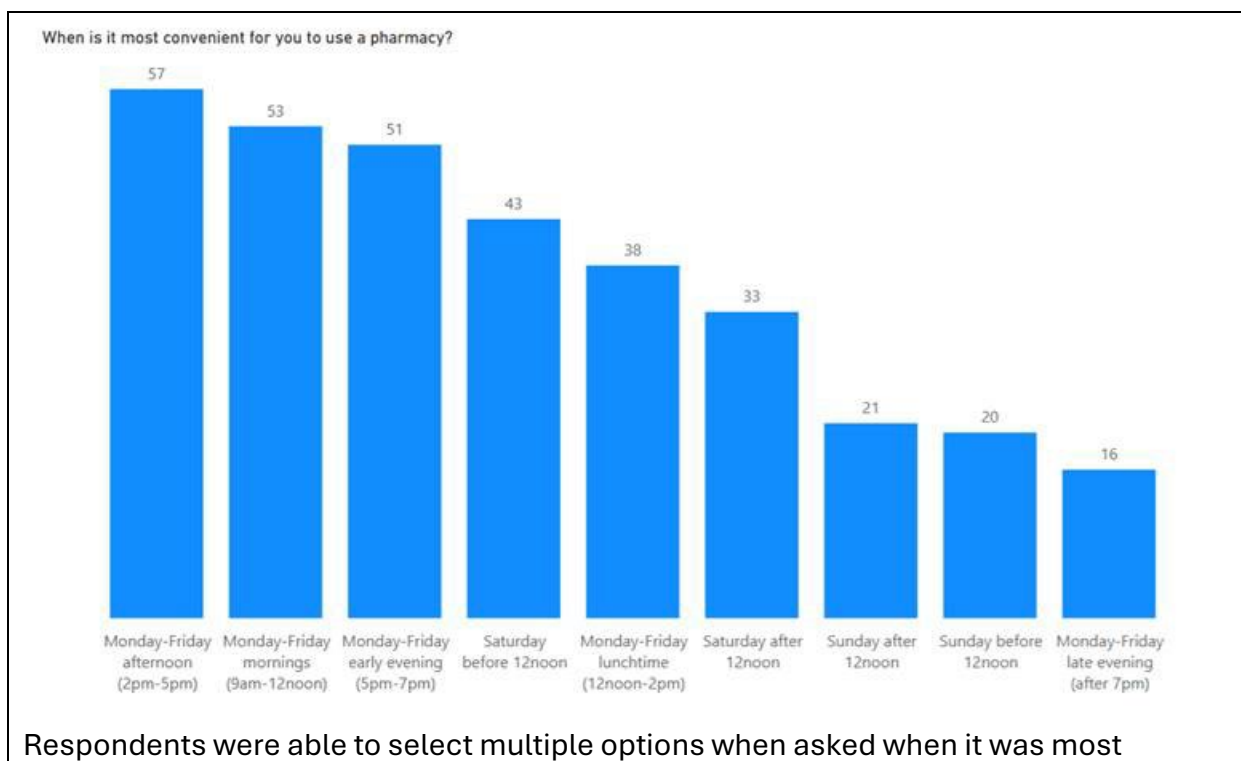
Reasons for visiting a pharmacy



Frequency of visits to pharmacies

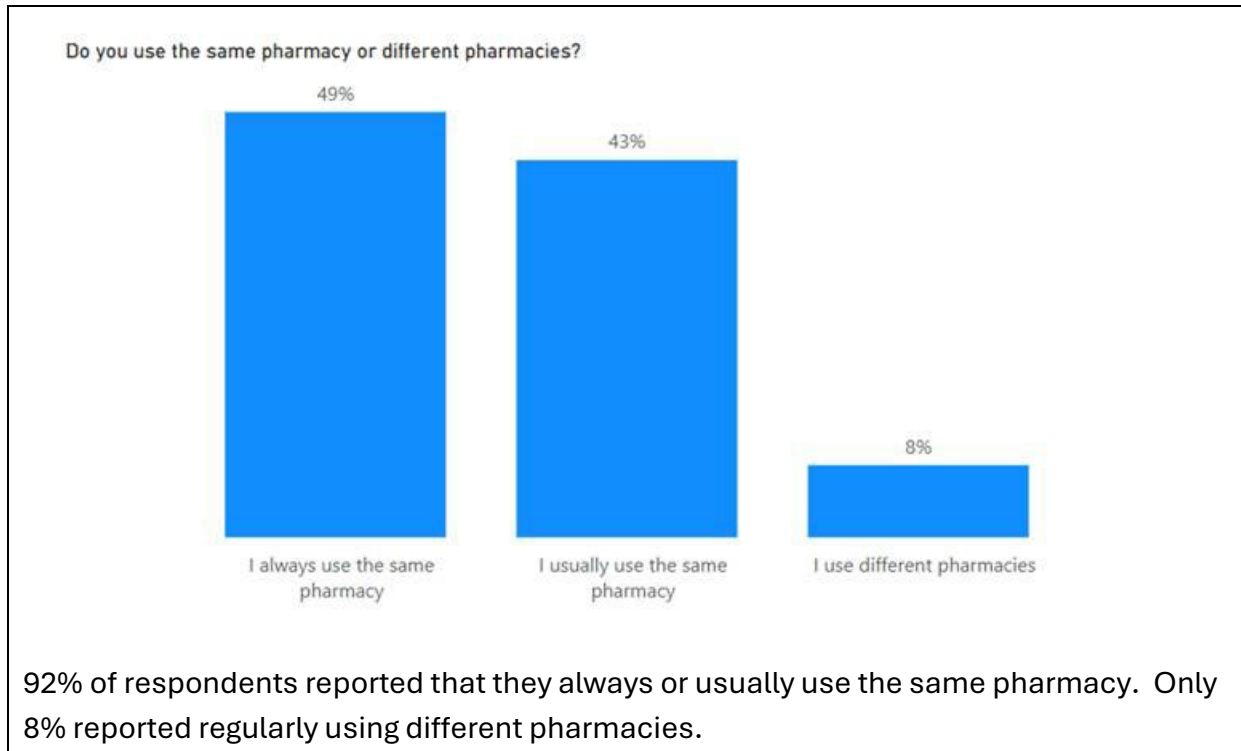


Time of the day when visiting pharmacy

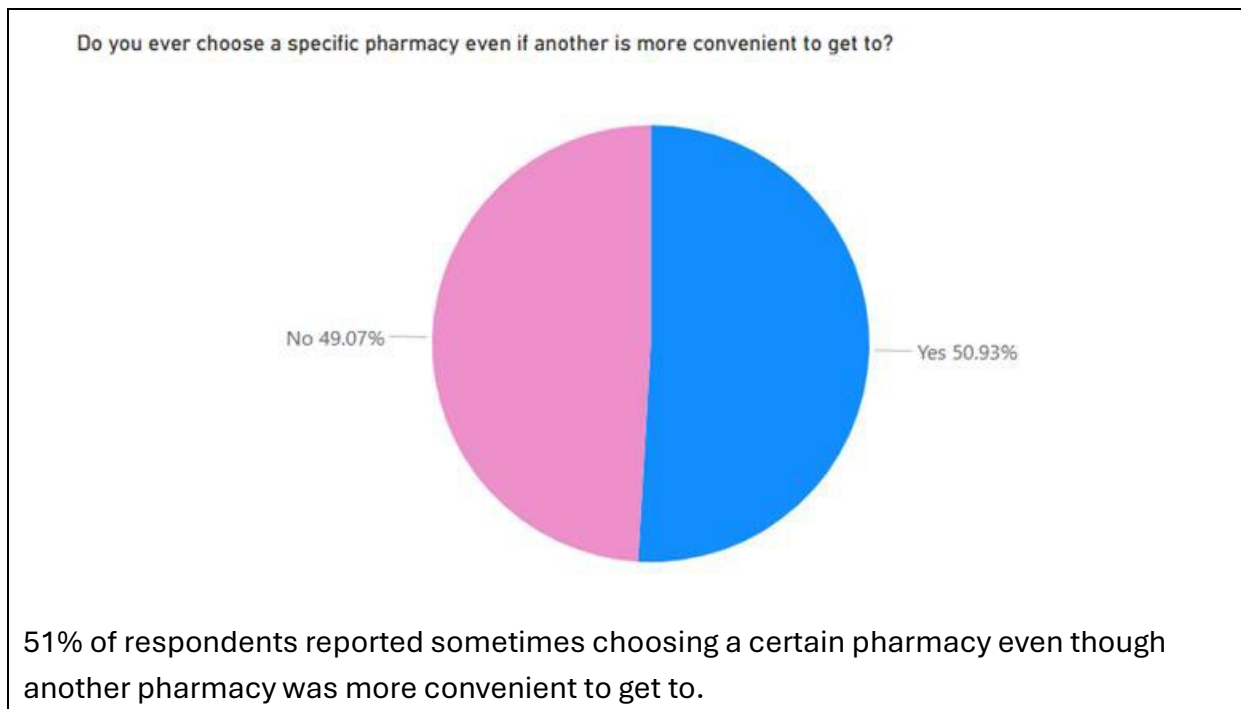


convenient for them to use a pharmacy. The most convenient times chosen were Monday to Friday - afternoons, mornings and early evenings (before 7pm). The least chosen option was Monday to Friday after 7pm with only 15% of respondents choosing this option.

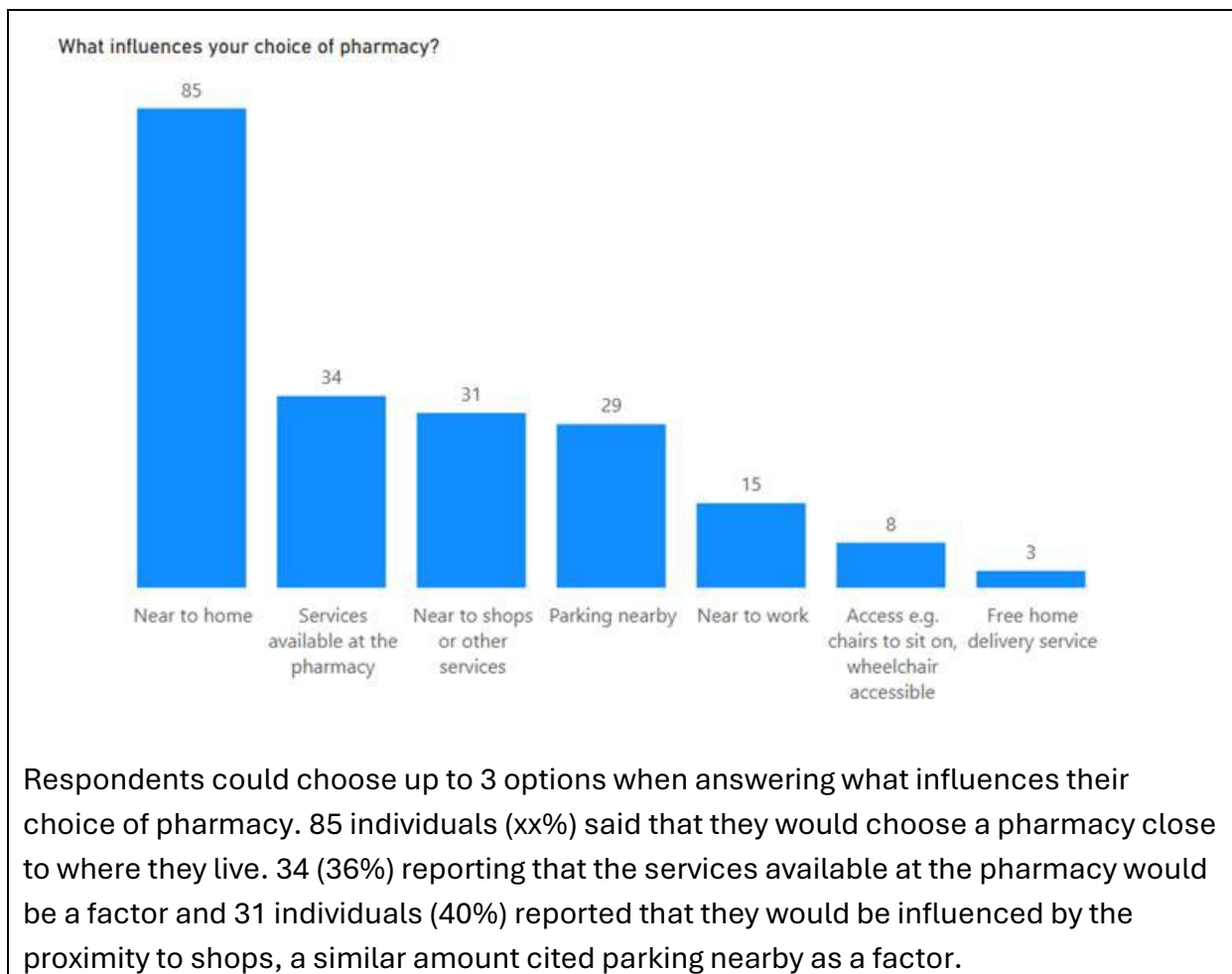
Same pharmacy



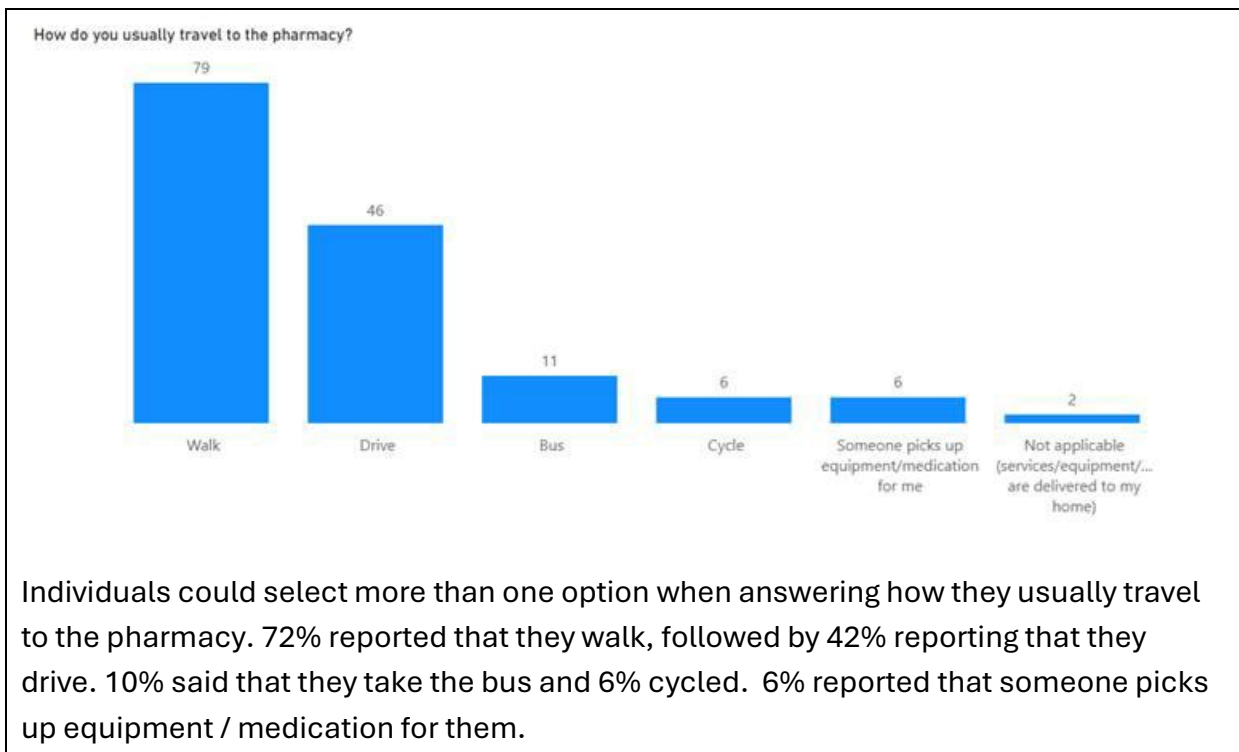
Convenience versus choice



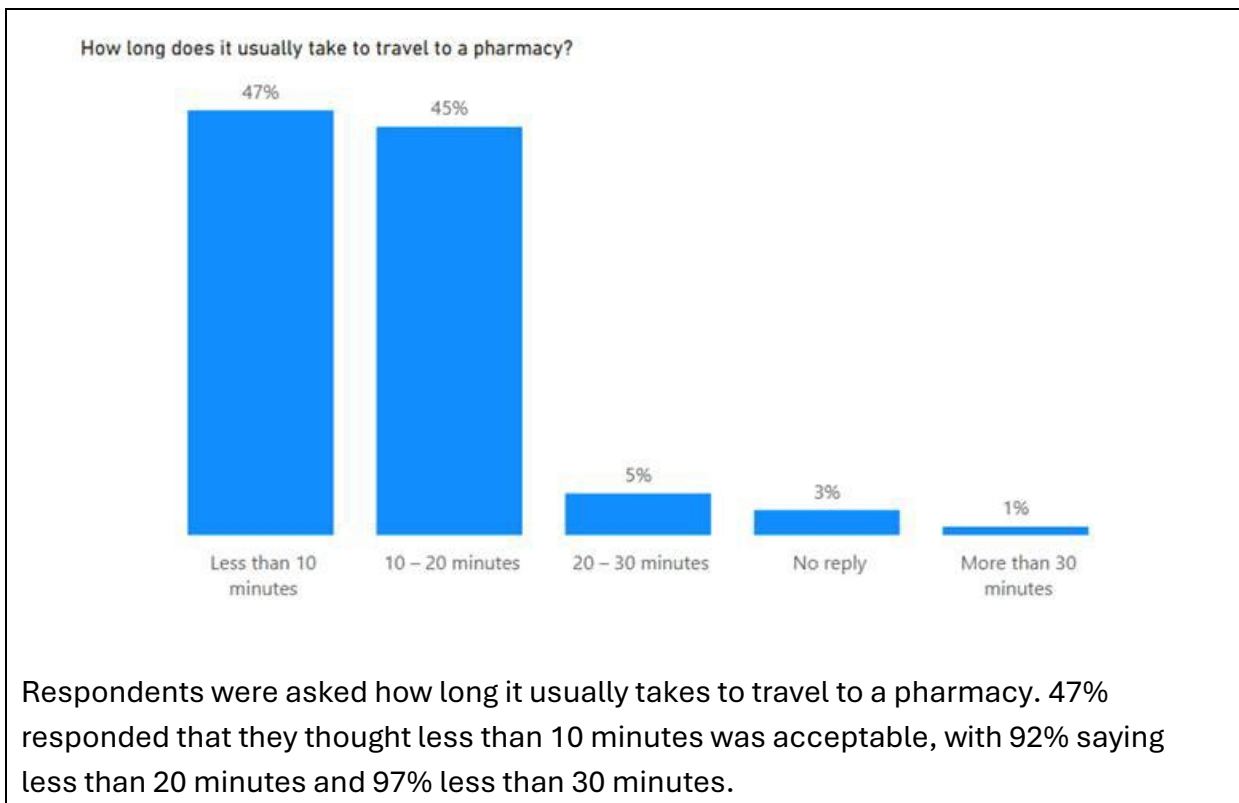
Choosing a pharmacy



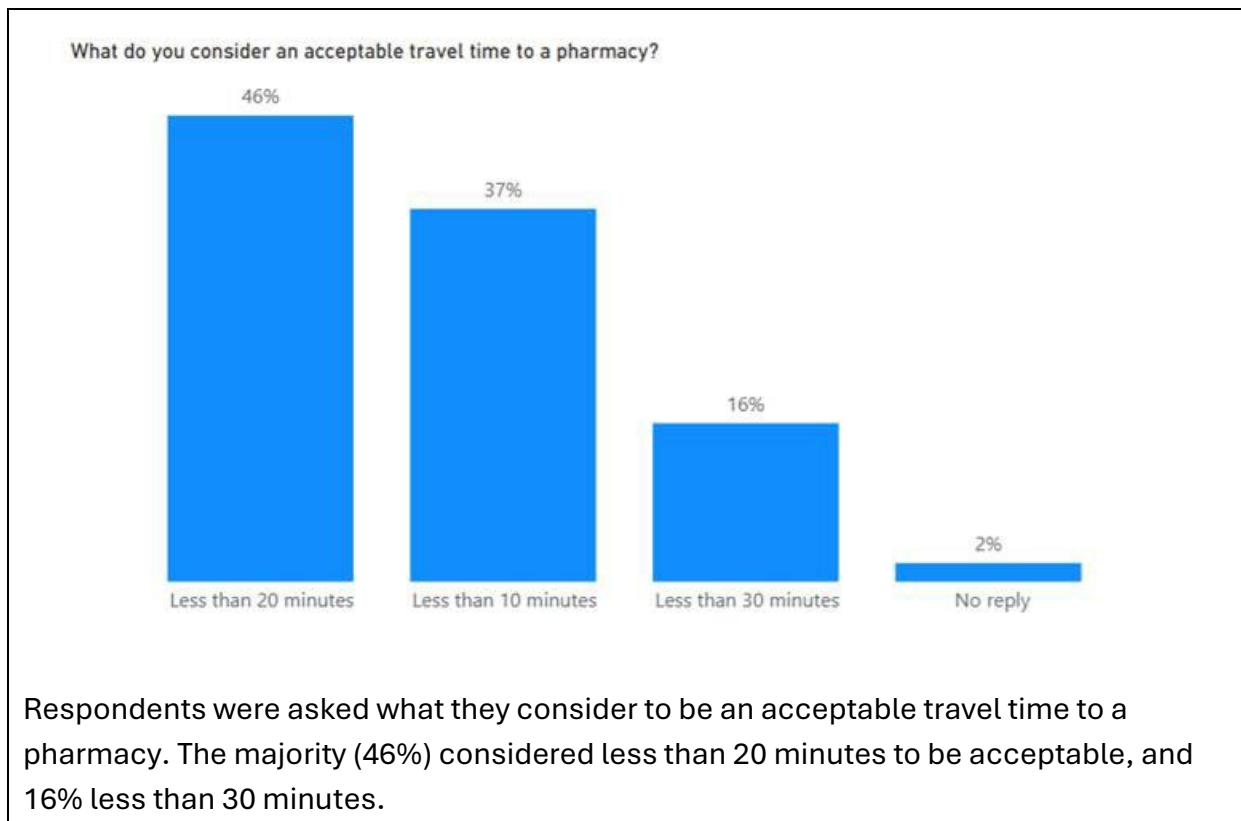
Travel methods



Travel time (actual)



Acceptable travel times



Appendix V: BNSSG PNA Steering Group

Membership

Healthwatch/The Care Forum	Jody Clark
Local Medical Committee (LMC)	Rebecca Kemp
Local Pharmaceutical Committee (LPC)	Richard Brown
BNSSG ICB (Performance and Delivery – Primary Care and Children’s Services)	Jenny Bowker
BNSSG ICB (Medicine Optimisation)	Alison Mundell
South Gloucestershire Council Public Health	Sam Coleborn
Bristol City Council Public Health	Carol Slater; John Twigger
North Somerset Council Public Health (chair)	Sam Hayward
North Somerset Council Public Health	Sandra Shcherba

Appendix VI: Consultation Report

Background

The draft Pharmaceutical Needs Assessment for Bristol 2025 to 2028 consultation was available on the council’s Ask Bristol Consultation and Engagement Hub (<https://www.bristol.gov.uk/ask>) between 1 July and 31 August 2025. The survey contained the following information as context for the survey questions:

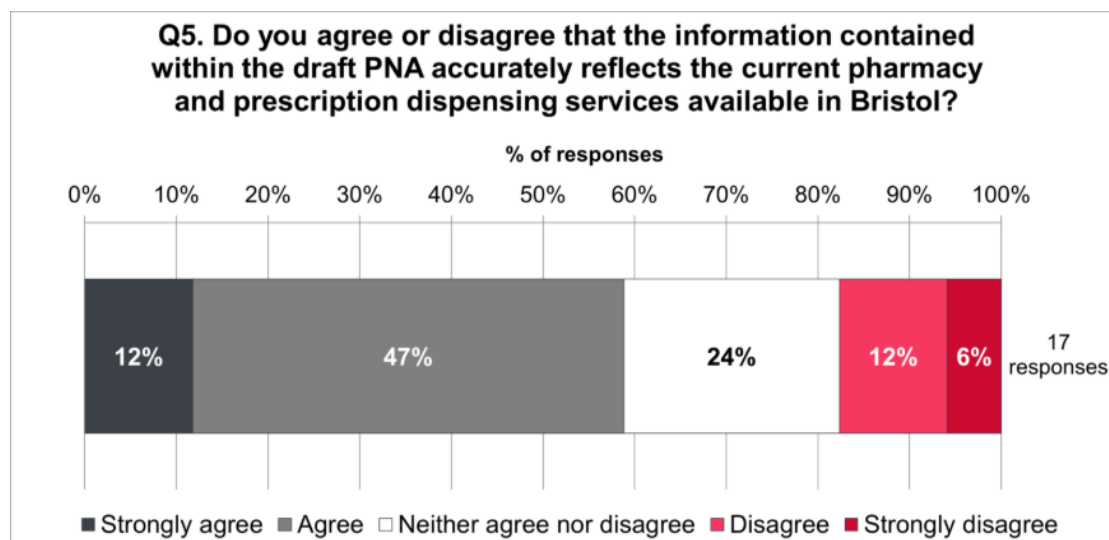
- A description of what a Pharmaceutical Needs Assessment is
- What feedback was being sought
- Who the consultation was especially relevant to
- [The draft Pharmaceutical Needs Assessment document](#)

Responses summary

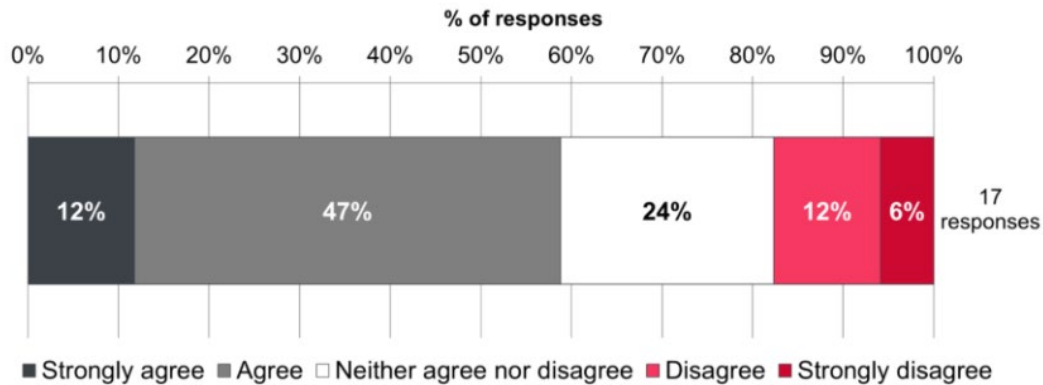
19 responses to the draft PNA were received. The first 5 questions gathered demographic data about the respondents; in summary,

- 56% said that they were giving an official response on behalf of an organisation (NHS, Pharmacy, Health & Wellbeing Board, VCSE organisations). 44% of respondents said they were responding as an individual.
- 42% of responses were received from postcodes within the Bristol City Council area including Brislington, Southville, Eastville, Lawrence Hill, St George. 58% did not provide a postcode.
- 75% of all responses were from women and 25% were from men.
- 13% were aged 25-34; 38% 35-44; 25% 55-64; 13% 65-74; 13% 75-84
- 75% were White British; 25% Other White Background citizens (25%). All other ethnic backgrounds were underrepresented.
- 50% responded ‘yes’ to ‘do you consider yourself to be a disabled person?’

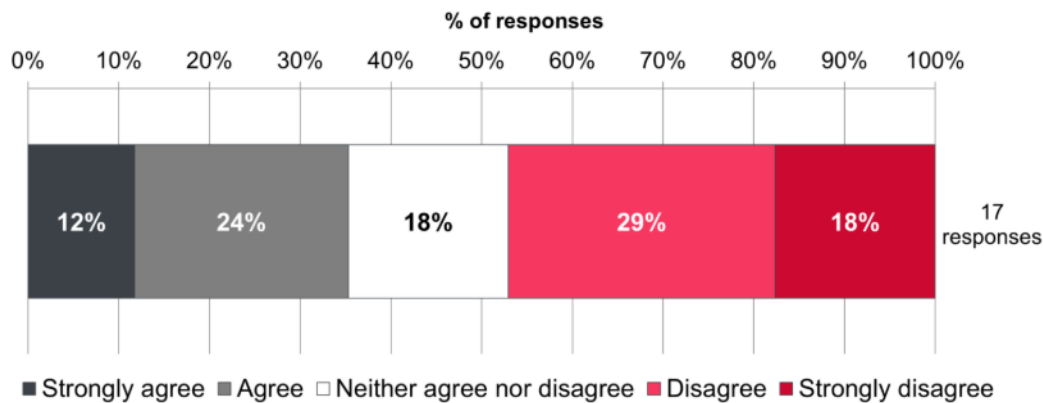
Agreement with the Pharmaceutical Needs Analysis



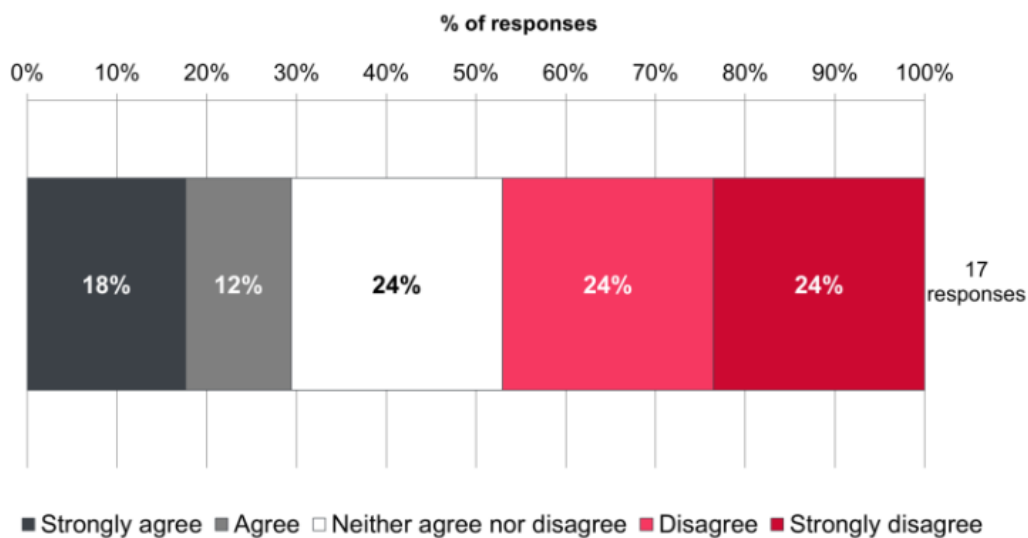
Q6. Do you agree or disagree that the pharmaceutical needs of the population of Bristol have been adequately reflected in the draft PNA document?

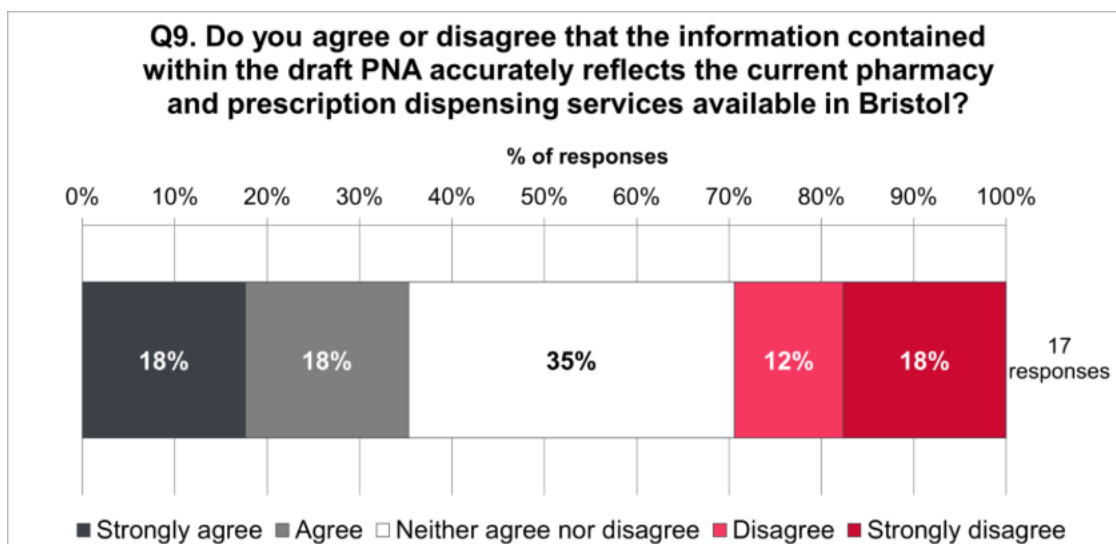


Q7. From the information in the draft PNA, do you agree or disagree that your future pharmaceutical needs will be met in the next 3 years?



Q8. Do you agree or disagree with the following assessment? In considering pharmaceutical needs for Bristol, the PNA has identified that local people's needs (including the dispensing of prescriptions) are sufficiently covered by current provision and that





Question 10. Other Comments

11 respondents provided further comments about the draft PNA, summarised into themes:

- Concerns about local access to pharmaceutical services - 7**
 respondents raised concerns about insufficient pharmacy provision in specific areas: South Bristol, North Bristol, Broomhill, Brislington; Knowle; Whitehall, Whitehall Road / Speedwell Road in St George West and Lawrence Hill.
- Service pressure and workforce challenges - 2** respondents described pharmacies as being under significant operational pressure, citing: Difficulty in recruiting and retaining staff; Challenges in delivering timely and effective services. One respondent noted that proximity alone does not guarantee quality service, challenging assumptions in the draft PNA.
- Deprivation and health inequality - 3** respondents highlighted the need for additional pharmacy provision in deprived areas, particularly in South Bristol and Lawrence Hill. These areas were described as having: Higher demand; Lower engagement with healthcare and Cultural and linguistic barriers.
- Opposition to the PNA - 1** organisational respondent (Cherington Road Neighbourhood Watch and Manor Farm Community Hub CIC) explicitly expressed their objection to the PNA. This was on the grounds that: Current pharmacy provision is insufficient; It inadequately assesses the Accessibility of Community Pharmacy Services; Inconsistency with wider council policy on accessibility and travel; It fails to consider adequately the expected demographic change, with a growing and an ageing population with greater pharmacy needs; It fails to consider the impact of the NHS 10 Year Plan and general expectation for more people to use their local pharmacy for advice rather than their GP Practice.
- Temporary closures and contingency planning - 1** respondent raised concerns about the lack of clarity in the PNA regarding: How closures or contract 'hand backs' would be handled; The need to acknowledge temporary closures and their potential impact.

- **Support for the PNA** - 1 organisational respondent (Community Pharmacy Avon and Wiltshire LPC) explicitly expressed support for the draft PNA, stating: *“The LPC is supportive of the PNA.”*
- **Role of independent pharmacies** - 1 respondent expressed strong support for independent pharmacists, stating they are: More empathetic; Better informed about medication risks; Easier to access than GPs.