



Brislington Meadows, Bristol

ECOLOGICAL TECHNICAL APPENDIX B

Target Note Report

7507.20.063

March 2022

TEP
Genesis Centre
Birchwood Science Park
Warrington
WA3 7BH

Tel: 01925 844004
Email: tep@tep.uk.com
www.tep.uk.com

Offices in Warrington, Market Harborough, Gateshead, London and Cornwall

Document Title	Brislington Meadows Ecological Technical Appendix B – Target Note Report
Prepared for	Homes England
Prepared by	TEP Ltd
Document Ref	7507.20.063

Author(s)	Val Gateley MCIEEM, Graham Roberts MCIEEM
Reviewed	Dr Rachel Roberts CEnv MCIEEM
Approved	Francis Hesketh CMLI CEnv MCIEEM MICFor
Date	March 2022

Issue and Revision Record					
Version	Date	Description / Purpose	Originator	Checked	Approved
1.0	22-02-22	Client issue for pre-submission review & approval	VG/GAR	RAR	FBH
2.0	28-03-22	Final for submission	RR	FBH	FBH

Contents	Page
1.0 Introduction	1
2.0 Methods	2
3.0 Target Notes Report.....	4
Grasslands.....	4
Hedgerows.....	17
Woodland.....	25
Other Habitats.....	31

Drawings

G7507.20.011 Habitat Baseline

G7507.20.058 Target Note Locations

1.0 Introduction

- 1.1 The Environment Partnership (TEP) was commissioned in August 2020, by Campbell Reith on behalf of Homes England, to complete an Ecological Impact Assessment (EclA) for the site known as Brislington Meadows (hereafter referred to as 'the site').
- 1.2 The central grid reference of the site is approximately ST 626 711 and the location of the site is shown in Figure 1.

Figure 1: Site Location



- 1.3 Prior to TEP's appointment, WSP completed a Preliminary Ecological Appraisal (PEA) in September 2019 for the site on behalf of Homes England to inform a pre-planning application (ref 9/05220/PREAPP). WSP was also instructed to complete further botanical survey of grasslands in June 2020.
- 1.4 TEP has reviewed WSP survey data and completed further habitat and botanical surveys to inform the EclA. This report compiles habitat and botanical survey information from this suite of surveys to present a whole-site summary for the range of habitats present.

2.0 Methods

- 2.1 WSP's instruction included a habitat survey in September 2019 applying the JNCC Phase 1 Habitat classification system¹.
- 2.2 TEP completed a habitat survey applying the UK Habitat Classification System (UKHAB)² in July 2020, which was subsequently reviewed and refreshed during further sites visits up to and including February 2021. The habitat survey and subsequent updates were completed by two TEP ecologists certified to Level 4 under the Field Identification Skills Certification (FISC)³.
- 2.3 A Hedgerow Regulations assessment survey was completed in May 2021 by TEP, reported in Technical Appendix 7507.20.057. The hedgerow assessment was completed by a TEP botanist certified to FISC Level 5. Methods and findings of the hedgerow assessment are detailed at Technical Appendix B (TEP Ref 7507.20.057).
- 2.4 WSP completed a grassland botanical survey in June 2020 which covered fields F1-F5. The survey was completed in general accordance with National Vegetation Classification (NVC) methods, except that it utilised a series of 1m x 1m quadrats (rather than 2m x 2m quadrats recommended for grassland habitats). Methods and findings of the WSP grassland botanical survey are detailed at Annex A of Technical Appendix D (TEP Ref 7507.20.059).
- 2.5 Fields F1-F5 were subject to a botanical walkover survey by TEP in May 2021 prior to completion of NVC survey utilising a series of 2m x 2m quadrats in July 2021. F6 could not be accessed during the May visit but was subject to the NVC survey in July 2021. Methods and findings of the grassland botanical survey are detailed at Technical Appendix D (TEP Ref 7507.20.059).
- 2.6 Habitat condition assessment surveys of grassland, scrub, hedgerows, woodland and urban habitat types were undertaken between July 2020 and February 2022 by TEP, applying guidance published by Natural England for Biodiversity Metric version 3.0⁴. Habitat condition assessments are recorded in Technical Appendix E (TEP Ref 7507.20.011).
- 2.7 Botanical data was collated from all the above field work and compiled into 'target notes' in this report to provide a broader representation of the site's habitat and botanical make-up.

¹ JNCC (2010) Handbook for Phase 1 Habitat Survey: A technique for environmental audit. Joint Nature Conservation Committee, Peterborough

² Butcher, B., Carey, P., Edmonds, R., Norton L. and Treweek, J. (2020) The UK Habitat Classification System User Manual Version 1.1. at <http://www.ukhab.org/>

³ A national skills certification scheme operated by Botanical Society of Britain and Ireland. FISC 4 is the competency level recommended for Biodiversity Net Gain (BNG) field assessments, FISC 5 is recommended for National Vegetation Classification (NVC) survey

⁴ Panks, S., White, N., Newsome, A., Potter, J., Heydon, M., Mayhew, E., Alvarez, M., Russell, T., Scott, S.J., Heaver, M., Scott, S.H., Treweek, J., Butcher, B. and Stone, D. (2021) Biodiversity metric 3.0: Auditing and accounting for biodiversity – User Guide. Natural England. Technical Supplement at: <http://publications.naturalengland.org.uk/file/4739529476145152>

- 2.8 Target notes have been grouped according to primary habitat types. Target notes include brief descriptions, an illustrative photograph and representative flora lists for each target note area. Target note areas are identified on Drawing G7507.20.058, alongside associated field, hedgerow and woodland identification reference numbers. Habitat parcels, as identified for the habitat condition assessment, are also identified on this drawing and cross-referenced for each target note area.
- 2.9 Flora lists for each target note area were compiled from the various surveys undertaken over the course of 2020 and 2021 and abundance of species was recorded applying the DAFOR scale, as summarised in Table 1.

Table 1: DAFOR scale categories

Value	Cover	Notes
D = Dominant	>75%	Rarely used in practice
A = Abundant	51-75%	Very common in many parts of the target note area / site
F = Frequent	26%-50%	Several plants in several locations across target note area / site
O = Occasional	11-25%	Several plants in a few locations, or vice versa
R = Rare	1-10%	Small number of individuals, scattered or clustered within target note area/ site

- 2.10 Occasionally, due to variations in surveyor, season and site condition, a species may only be recorded on limited occasions. Species that were recorded in June 2020 by WSP but which were not recorded during TEP surveys are asterisked (**) in the compiled flora lists in this report.
- 2.11 Each individual technical assessment, from UKHab survey to grassland NVC to habitat condition assessment, must be evaluated independently according to the specific findings of the survey at that time. However, compiling species lists from across multiple survey visits as provided in this report generates a more comprehensive catalogue of the habitats and floral communities present. However, even though multiple survey visits have been completed in different seasons over two years, it remains possible that some additional flora may not have been recorded.
- 2.12 Where multiple DAFOR values are displayed in flora lists, this reflects different DAFOR values recorded during different times of the year in which surveys were undertaken. Rather than select an average or maximum value, the range of values is presented for additional context.

3.0 Target Notes

Grasslands

Target Note TN1

- 3.1 Field F1 is a semi-improved grassland field dominated by tall grasses meadow foxtail and false-oat grass. Scattered hawthorn and oak saplings were present. A small group of cherry trees have been planted in the north corner of the field, offset slightly from the boundary vegetation (TN28). Several retain their tree guards. Their origin is unknown, as their planting was prior to Homes England acquisition of the site.



<i>Alopecurus pratensis</i>	Meadow foxtail	A
<i>Arrhenatherum elatius</i>	False oat-grass	A-F
<i>Anthoxanthum odoratum</i>	Sweet vernal-grass	A-F
<i>Festuca rubra</i>	Red fescue	F
<i>Holcus lanatus</i>	Yorkshire-fog	A-F
<i>Plantago lanceolata</i>	Ribwort plantain	F
<i>Centaurea nigra</i>	Knapweed	O
<i>Cerastium fontanum</i>	Common mouse-ear	O
<i>Dactylis glomerata</i>	Cock's-foot	O
<i>Heracleum sphondylium</i>	Hogweed	O
<i>Lolium perenne</i>	Perennial ryegrass	O
<i>Lotus corniculatus</i>	Bird's-foot trefoil	O
<i>Poa trivialis</i>	Rough meadow-grass	O
<i>Rumex acetosa</i>	Common sorrel	O-R
<i>Taraxacum officinale</i> agg.	Dandelion	O-R
<i>Trifolium pratense</i>	Red clover	O

<i>Trifolium repens</i>	White clover	O
<i>Agrostis capillaris</i>	Common bent	R
<i>Cirsium arvense</i>	Creeping thistle	R
<i>Convolvulus arvensis</i>	Field bindweed	R
<i>Crataegus monogyna</i>	Hawthorn (scattered, sapling)	R
<i>Lathyrus pratensis</i>	Meadow vetchling	R
<i>Quercus robur</i>	English oak (scattered, sapling)	R
<i>Ranunculus acris</i>	Meadow buttercup	R
<i>Ranunculus bulbosus</i>	Bulbous buttercup	R
<i>Rumex sanguineus</i>	Wood dock	R
<i>Rosa rubiginosa</i>	Sweet-briar (scattered, sapling)	R
<i>Schedonorus arundinaceus</i>	Tall fescue	O-R
<i>Senecio jacobaea</i>	Ragwort	R
<i>Veronica chamaedrys</i>	Germander speedwell	R
<i>Vicia sativa</i>	Common vetch	R

- 3.2 Habitat condition assessment (Technical Appendix E Ref 7507.20.011) parcel ID(s): 1, 13.

Target Note TN2

- 3.3 Field F2: a long narrow field of semi-improved neutral grassland. The majority of the field is considered to be species poor, with fewer forb species noted (per m2) across the majority sward of the field where the coarse grasses were dominant. The northern third part of the field was visibly less dominated by false oat-grass in particular and contained a generally higher sward diversity.



<i>Alopecurus pratensis</i>	Meadow foxtail	A-F
<i>Arrhenatherum elatius</i>	False oat-grass	A-F

<i>Anthoxanthum odoratum</i>	Sweet vernal-grass	F
<i>Dactylis glomerata</i>	Cock's-foot	F
<i>Trisetum flavescens</i>	Yellow oat-grass**	F
<i>Festuca rubra</i>	Red fescue	A-F
<i>Holcus lanatus</i>	Yorkshire-fog	F
<i>Achillea millefolium</i>	Yarrow	O
<i>Anisanthera sterilis</i>	Sterile brome	O
<i>Centaurea nigra</i>	Knapweed	O
<i>Conopodium majus</i>	Pignut	O
<i>Geranium dissectum</i>	Cut-leaved cranesbill	O
<i>Heracleum sphondylium</i>	Hogweed	O
<i>Lathyrus pratensis</i>	Meadow vetchling	O
<i>Lolium perenne</i>	Perennial ryegrass	O
<i>Lotus corniculatus</i>	Bird's-foot trefoil	O
<i>Plantago lanceolata</i>	Ribwort plantain	O
<i>Poa annua</i>	Annual meadow-grass	O
<i>Poa trivialis</i>	Rough meadow-grass	O
<i>Ranunculus acris</i>	Meadow buttercup	O
<i>Ranunculus bulbosus</i>	Bulbous buttercup	O
<i>Ranunculus repens</i>	Creeping buttercup	O
<i>Rumex acetosa</i>	Common sorrel	O
<i>Trifolium pratense</i>	Red clover	O
<i>Trifolium repens</i>	White clover	O
<i>Agrostis capillaris</i>	Common bent	R
<i>Cirsium arvense</i>	Creeping thistle	R
<i>Convolvulus arvensis</i>	Field bindweed	R
<i>Epilobium sp.</i>	Willowherb species	R
<i>Geranium molle</i>	Dove's-foot cranesbill	R
<i>Hypochaeris radicata</i>	Common cat's-ear	R
<i>Rumex crispus</i>	Curled dock	O-R
<i>Schedonorus arundinaceus</i>	Tall fescue	R
<i>Taraxacum officinale agg.</i>	Dandelion	R

- 3.4 Habitat condition assessment (Technical Appendix E Ref 7507.20.011) parcel ID(s): 2, 9, 10, 14.

Target Note TN3

- 3.5 Area F2a is situated in the southwest corner of field F2, located in the footprint of former stables. The previously disturbed ground has re-vegetated since removal of the structures and slabs. Initially in July 2020 coverage was patchy with a few species including fat hen *Chenopodium album* occurring abundantly. By summer 2021, the area was fully vegetated with the fat hen absent in the taller more established sward.



<i>Alliaria petiolata</i>	Garlic mustard	F
<i>Anisanthera sterilis</i>	Sterile brome	F
<i>Chenopodium album</i>	Fat hen (early establishment only)	F
<i>Poa trivialis</i>	Rough meadow-grass	F
<i>Sisymbrium officinale</i>	Hedge mustard	F
<i>Urtica dioica</i>	Nettle	F

<i>Achillea millefolium</i>	Yarrow	O
<i>Cirsium arvense</i>	Creeping thistle	O
<i>Cirsium vulgare</i>	Spear thistle	O
<i>Dactylis glomerata</i>	Cock's-foot	O
<i>Epilobium hirsutum</i>	Great willowherb	O
<i>Geranium molle</i>	Dove's-foot cranesbill	O
<i>Glechoma hederacea</i>	Ground ivy	O
<i>Lamium album</i>	White dead-nettle	O
<i>Plantago lanceolata</i>	Ribwort plantain	O
<i>Rumex obtusifolius</i>	Broad-leaved dock	O
<i>Senecio vulgaris</i>	Groundsel	O
<i>Trifolium pratense</i>	Red clover	O
<i>Trifolium repens</i>	White clover	O
<i>Veronica persica</i>	Field speedwell	O
<i>Vicia sativa</i>	Common vetch	O
<i>Geranium dissectum</i>	Cut-leaved cranesbill	R
<i>Lamium purpureum</i>	Red dead-nettle	R
<i>Lepidium didymum</i>	Lesser swine-cress	R
<i>Malva moschata</i>	Musk mallow	R
<i>Schedonorus arundinaceus</i>	Tall fescue	R

- 3.6 Habitat condition assessment (Technical Appendix E Ref 7507.20.011) parcel ID(s): 56.

Target Note TN4

- 3.7 Field F3 is a long narrow area of semi-improved neutral grassland. Similar to F2, the majority of the field has a higher dominance of rank grasses and fewer forbs than the north-western end and is classed as species poor. The field slopes to the south.



<i>Alopecurus pratensis</i>	Meadow foxtail	A
<i>Arrhenatherum elatius</i>	False oat-grass	A-F
<i>Heracleum sphondylium</i>	Hogweed	F
<i>Holcus lanatus</i>	Yorkshire-fog	F
<i>Plantago lanceolata</i>	Ribwort plantain	F
<i>Poa annua</i>	Annual meadow-grass	F
<i>Poa trivialis</i>	Rough meadow-grass	F
<i>Agrostis capillaris</i>	Common bent	O
<i>Anthoxanthum odoratum</i>	Sweet vernal-grass	O
<i>Centaurea nigra</i>	Knapweed	O
<i>Cerastium fontanum</i>	Common mouse-ear	O
<i>Dactylis glomerata</i>	Cock's-foot	O
<i>Lolium perenne</i>	Perennial ryegrass	O
<i>Ranunculus acris</i>	Meadow buttercup	O
<i>Rumex acetosa</i>	Common sorrel	O
<i>Rumex crispus</i>	Curled dock	O
<i>Trifolium pratense</i>	Red clover	O
<i>Trifolium repens</i>	White clover	O
<i>Trisetum flavescens</i>	Yellow oat-grass**	O
<i>Vicia sativa</i>	Common vetch	O
<i>Agrostis stolonifera</i>	Creeping bent	R
<i>Conopodium majus</i>	Pignut	R
<i>Juncus inflexus</i>	Hard rush	R
<i>Lotus corniculatus</i>	Bird's-foot trefoil	R
<i>Ranunculus repens</i>	Creeping buttercup	R
<i>Schedonorus arundinaceus</i>	Tall fescue	R
<i>Silene dioica</i>	Red campion	R
<i>Sonchus asper</i>	Prickly sow-thistle	R
<i>Schedonorus arundinaceus</i>	Tall fescue	R
<i>Vicia sepium</i>	Bush vetch	R

- 3.8 Habitat condition assessment (Technical Appendix E Ref 7507.20.011) parcel ID(s): 3, 11, 15, 16.

Target Note TN5

- 3.9 Area F3a is in the south corner of field F3. It is a small area visually distinct from the surrounding sward with marshy tendencies, although it was not noticeably damp underfoot during the survey period.

<i>Juncus acutiflorus</i>	Sharp-flowered rush	A
<i>Juncus articulatus</i>	Jointed rush**	F
<i>Agrostis stolonifera</i>	Creeping bent	F
<i>Cardamine pratensis</i>	Cuckooflower	F
<i>Deschampsia cespitosa</i>	Tufted hair-grass	F
<i>Festuca rubra</i>	Red fescue	F
<i>Holcus lanatus</i>	Yorkshire-fog	F
<i>Lotus pedunculatus</i>	Marsh bird's-foot trefoil	F
<i>Ranunculus repens</i>	Creeping buttercup	F
<i>Rumex acetosa</i>	Common sorrel	F
<i>Agrostis capillaris</i>	Common bent	O
<i>Anthoxanthum odoratum</i>	Sweet vernal-grass	O



<i>Geranium dissectum</i>	Cut-leaved cranesbill	O
<i>Lathyrus pratensis</i>	Meadow vetchling	O
<i>Plantago lanceolata</i>	Ribwort plantain	O
<i>Potentilla anserina</i>	Silverweed	O
<i>Ranunculus acris</i>	Meadow buttercup	O
<i>Alopecurus pratensis</i>	Meadow foxtail	R
<i>Centaurea nigra</i>	Knapweed	R
<i>Cerastium fontanum</i>	Mouse-ear	R
<i>Jacobaea vulgaris</i>	Ragwort	R

- 3.10 Habitat condition assessment (Technical Appendix E Ref 7507.20.011) parcel ID(s): 17.

Target Note TN6

- 3.11 Field F4 is a moderate to steeply sloping semi-improved neutral grassland field. Tall grasses are dominant but notably pignut and bluebells were recorded throughout the field (during the spring survey). Scattered hawthorn saplings were present.

<i>Alopecurus pratensis</i>	Meadow foxtail	A
<i>Arrhenatherum elatius</i>	False oat-grass	A-F
<i>Holcus lanatus</i>	Yorkshire-fog	A-F
<i>Agrostis capillaris</i>	Common bent	F
<i>Anthoxanthum odoratum</i>	Sweet vernal-grass	A-F
<i>Conopodium majus</i>	Pignut	F
<i>Dactylis glomerata</i>	Cock's-foot	F
<i>Festuca rubra</i>	Red fescue	F-A
<i>Rumex acetosa</i>	Common sorrel	F
<i>Trisetum flavescens</i>	Yellow oat-grass**	F
<i>Centaurea nigra</i>	Knapweed	O-F

May 2021:

A wide-angle photograph of a lush green field with white daisies in the foreground. A dense line of trees and shrubs separates the field from a town in the background. The sky is filled with white clouds and several power lines stretch across the upper portion of the image.

July 2021:

A photograph of a field of tall, golden-brown grass with several yellow wildflowers. In the background, there is a dense line of green trees, a distant town, and a large electricity pylon under a cloudy sky.

O

O

O

<i>Lolium perenne</i>	Perennial ryegrass	O-F
<i>Lotus corniculatus</i>	Bird's-foot trefoil	O
<i>Plantago lanceolata</i>	Ribwort plantain	O
<i>Poa trivialis</i>	Rough meadow-grass	O
<i>Ranunculus acris</i>	Meadow buttercup	O
<i>Ranunculus bulbosus</i>	Bulbous buttercup	O
<i>Trifolium pratense</i>	Red clover	O-F
<i>Trifolium repens</i>	White clover	O-F
<i>Veronica chamaedrys</i>	Germander speedwell	O
<i>Achillea millefolium</i>	Yarrow	R
<i>Cirsium arvense</i>	Creeping thistle	R
<i>Crataegus monogyna</i>	Hawthorn (scattered, sapling)	R
<i>Ficaria verna</i>	Lesser celandine	R
<i>Galium verum</i>	Lady's bedstraw	R
<i>Jacobaea vulgaris</i>	Ragwort	R
<i>Lathyrus pratensis</i>	Meadow vetchling	R
<i>Ranunculus repens</i>	Creeping buttercup	R
<i>Rumex obtusifolius</i>	Broad-leaved dock	R
<i>Taraxacum officinale</i> agg.	Dandelion	R
<i>Tussilago farfara</i>	Coltsfoot	R

- 3.12 Habitat condition assessment (Technical Appendix E Ref 7507.20.011) parcel ID(s): 5,18.

Target Note TN7

- 3.13 Field F5 is a gently south-sloping semi-improved neutral grassland again dominated by tall grasses.



<i>Alopecurus pratensis</i>	Meadow foxtail	D
<i>Holcus lanatus</i>	Yorkshire-fog	A-F
<i>Trisetum flavescens</i>	Yellow oat-grass**	A
<i>Agrostis capillaris</i>	Common bent	F
<i>Arrhenatherum elatius</i>	False oat-grass	F-A
<i>Anthoxanthum odoratum</i>	Sweet vernal-grass	F
<i>Festuca rubra</i>	Red fescue	F
<i>Ranunculus bulbosus</i>	Bulbous buttercup	F
<i>Rumex acetosa</i>	Common sorrel	F
<i>Centaurea nigra</i>	Knapweed	O
<i>Cerastium fontanum</i>	Common mouse-ear	O
<i>Cirsium arvense</i>	Creeping thistle	O
<i>Dactylis glomerata</i>	Cock's-foot	O
<i>Heracleum sphondylium</i>	Hogweed	O
<i>Lathyrus pratensis</i>	Meadow vetchling	O
<i>Lolium perenne</i>	Perennial ryegrass	O
<i>Plantago lanceolata</i>	Ribwort plantain	O-F
<i>Poa annua</i>	Annual meadow-grass	O
<i>Poa trivialis</i>	Rough meadow-grass	O
<i>Ranunculus acris</i>	Meadow buttercup	O
<i>Trifolium pratense</i>	Red clover	O
<i>Vicia sativa</i>	Common vetch	O
<i>Conopodium majus</i>	Pignut	R
<i>Convolvulus arvensis</i>	Field bindweed	R-O
<i>Jacobaea vulgaris</i>	Ragwort	R
<i>Lotus corniculatus</i>	Bird's-foot trefoil	R
<i>Polygonum aviculare</i>	Knotgrass	R
<i>Ranunculus repens</i>	Creeping buttercup	R
<i>Trifolium repens</i>	White clover	R

- 3.14 Habitat condition assessment (Technical Appendix E Ref 7507.20.011) parcel ID(s): 6,12.

Target Note TN8

- 3.15 Field F6 is split broadly in half east-west by relic fencing and occasional heras panels. Unlike fields F1-F5, field F6 is excluded from public access as it is under a grazing tenancy. The field was formerly used for horse grazing, but currently only the southeast corner of field F6 (referred to as F6a) is used as a pony enclosure (mini-Shetlands).
- 3.16 The north and south areas of F6 have very similar swards. Common bent is more dominant across the northern area, where crested dog's-tail is less frequent than in the southern area. Sheep's sorrel and moss *Polytrichum* were only recorded in the northern area, often associated with ant hills. Also, lady's bedstraw and hare's-foot clover noted rarely only in the northern area.
- 3.17 There is substantial bramble encroachment across the field, especially in and around the north.



<i>Agrostis capillaris</i>	Common bent	A
<i>Cynosurus cristatus</i>	Crested dog's-tail	A
<i>Achillea millefolium</i>	Yarrow	F

<i>Anthoxanthum odoratum</i>	Sweet vernal-grass	F
<i>Centaurea nigra</i>	Knapweed	F
<i>Holcus lanatus</i>	Yorkshire-fog	F
<i>Hordeum secalinum</i>	Meadow barley	F
<i>Lotus corniculatus</i>	Bird's-foot trefoil	F
<i>Rumex obtusifolius</i>	Broad-leaved dock	F
<i>Trifolium pratense</i>	Red clover	F
<i>Cerastium fontanum</i>	Common mouse-ear	O
<i>Crepis capillaris</i>	Smooth hawk's-beard	O
<i>Dactylis glomerata</i>	Cock's-foot	O
<i>Festuca rubra</i>	Red fescue	O
<i>Hypochaeris radicata</i>	Common cat's-ear	O
<i>Jacobaea vulgaris</i>	Common ragwort	O
<i>Lolium perenne</i>	Perennial ryegrass	O
<i>Malva moschata</i>	Musk mallow	O
<i>Plantago lanceolata</i>	Ribwort plantain	O
<i>Plantago major</i>	Greater plantain	O
<i>Poa pratensis</i>	Smooth meadow-grass	O
<i>Poa trivialis</i>	Rough meadow-grass	O
<i>Prunella vulgaris</i>	Selfheal	O
<i>Ranunculus repens</i>	Creeping buttercup	O
<i>Rumex acetosa</i>	Common sorrel	O
<i>Trifolium repens</i>	White clover	O
<i>Allium vineale</i>	Wild onion	R
<i>Bromus hordeaceus</i>	Soft brome	R
<i>Cirsium vulgare</i>	Spear thistle	R
<i>Galium verum</i>	Lady's bedstraw	R
<i>Helminthotheca echinoides</i>	Bristly ox-tongue	R
<i>Polytrichum juniperinum</i>	Moss species	R
<i>Rumex acetosella</i>	Sheep's sorrel	R
<i>Taraxacum officinale</i> agg.	Dandelion	R
<i>Trifolium arvense</i>	Hare's-foot clover	R
<i>Vulpia bromoides</i>	Squirrel-tail fescue	R

- 3.18 Habitat condition assessment (Technical Appendix E Ref 7507.20.011) parcel ID(s): 19.

Target Note TN9

- 3.19 Area F6a in the south corner of field F6 remains enclosed as a pony-paddock. It is intensely short grazed.

<i>Cynosurus cristatus</i>	Crested dog's-tail	F
<i>Dactylis glomerata</i>	Cock's-foot	F
<i>Poa annua</i>	Annual meadow-grass	F
<i>Ranunculus repens</i>	Creeping buttercup	F
<i>Trifolium repens</i>	White clover	F
<i>Bellis perennis</i>	Daisy	O
<i>Jacobaea vulgaris</i>	Common ragwort	O
<i>Plantago major</i>	Greater plantain	O

<i>Prunella vulgaris</i>	Selfheal	O
<i>Rumex obtusifolius</i>	Broad-leaved dock	O
<i>Malva moschata</i>	Musk mallow	R



- 3.20 Habitat condition assessment (Technical Appendix E Ref 7507.20.011) parcel ID(s): 7.

Target Note TN10

- 3.21 Area F7 in the east of the site is an area of former amenity grassland located between Broomhill Road and woodland W2. The area was previously open to the public and was subject to minor tipping of building and garden refuse. During demolition of Sinnott House in late 2020, F7 was fenced out to prevent further tipping.
- 3.22 The sward is species poor, dominated by perennial rye grass and white clover. The southern area of F7 comprises a deep and tall patch of bramble which transitions back into W2 in the west and to a line of trees extending from W2 along the south boundary of F7. The bramble scrub, which also contains nettle and hedge bindweed, is included in the flora list for this target note area, while the line of trees on the south boundary and W2 are described in further detail in separate target notes.
- 3.23 Outside of the TN area, on third party land adjacent to the site boundary, a remnant cotoneaster hedge is present on the track serving the private gardens to the north and two patches of wall cotoneaster are present on the track by the private garages, adjacent to the fence line of Sinnott House.



<i>Lolium perenne</i>	Perennial rye	A
<i>Rubus fruticosus</i> agg.	Bramble	A
<i>Trifolium repens</i>	White clover	F
<i>Ranunculus repens</i>	Creeping buttercup	F
<i>Urtica dioica</i>	Nettle	F
<i>Bellis perennis</i>	Daisy	O
<i>Calystegia sepium</i>	Hedge bindweed	O
<i>Convolvulus arvensis</i>	Field bindweed	O
<i>Plantago lanceolata</i>	Ribwort plantain	O
<i>Taraxacum officinale</i> agg.	Dandelion	O
<i>Cerastium fontanum</i>	Common mouse-ear	R
<i>Dactylis glomerata</i>	Cock's-foot	R
<i>Jacobaea vulgaris</i>	Common ragwort	R
<i>Poa trivialis</i>	Rough meadow-grass	R
<i>Poa annua</i>	Annual meadow-grass	R
<i>Prunella vulgaris</i>	Selfheal	R
<i>Rumex obtusifolius</i>	Broad-leaved dock	R
<i>Senecio vulgaris</i>	Groundsel	R

- 3.24 Habitat condition assessment (Technical Appendix E Ref 7507.20.011) parcel ID(s): 8, 47.

Hedgerows

- 3.25 Hedgerow assessments are detailed in the Technical Appendix Reference 7507.20.057. The following target notes collate floral species lists for the hedgerows from the various site surveys.

Target Note TN11

- 3.26 The southern section of Hedgerow H1 (H1a) is a species poor hedgerow running approximately north-south forming the boundary between fields F3 and F4. It is outgrown with bramble and nettles. Bluebells are present in this hedge section.
- 3.27 There is a minor gap (less than 3m) with an associated canopy gap crossing through H1a which carries a desire line.



<i>Crataegus monogyna</i>	Hawthorn	A
<i>Rubus fruticosus</i> agg.	Bramble	A
<i>Hedera helix</i>	Ivy	F
<i>Arum maculatum</i>	Lords-and-Ladies	O
<i>Hyacinthoides non-scripta</i>	Bluebell	O
<i>Quercus robur</i>	English oak	O
<i>Rosa canina</i> agg.	Dog rose	O
<i>Sambucus nigra</i>	Elder	O

Target Note TN12

- 3.28 The central section of Hedgerow H1 (H1b) is a species poor hedgerow running approximately north-south forming the boundary between fields F2 and F4. Like all sections of H1, it is outgrown with bramble and nettles. H1c is continuous with H1b at the junction with H4, which travels east from H1. Note the photograph depicts H1c on the right of the image (the left is H4).



<i>Crataegus monogyna</i>	Hawthorn	D
<i>Rubus fruticosus</i> agg.	Bramble	A
<i>Hedera helix</i>	Ivy	F
<i>Pteridium aquilinum</i>	Bracken	O
<i>Sambucus nigra</i>	Elder	O

Target Note TN13

- 3.29 The northern section of Hedgerow H1 (H1c) forms the boundary between fields F2 and F5. The original central line of the hedgerow diminishes in this section and the relic hedge form is largely overcome by bramble dominated scrub.

<i>Crataegus monogyna</i>	Hawthorn	A
<i>Rubus fruticosus</i> agg.	Bramble	A
<i>Hedera helix</i>	Ivy	F
<i>Arum maculatum</i>	Lords-and-Ladies	O
<i>Quercus robur</i>	English oak	O
<i>Rosa canina</i> agg.	Dog rose	O
<i>Sambucus nigra</i>	Elder	O



Target Note TN14

- 3.30 Hedgerow H2 is an outgrown hedgerow forming the boundary between fields F4 and F5. The central line of the original hedge becomes more gappy in the south section. It is outgrown primarily with bramble (F5 sides) and blackthorn. Desire lines parallel both sides and there are small gaps at either end carrying the desire lines through the hedgerow. The gap at the northern end retains a generally close canopy connection to with the northwest boundary and H6.



<i>Crataegus monogyna</i>	Hawthorn	A
<i>Prunus spinosa</i>	Blackthorn	A
<i>Rubus fruticosus</i> agg.	Bramble	A
<i>Hedera helix</i>	Ivy	F
<i>Urtica dioica</i>	Nettle	F
<i>Arum maculatum</i>	Lords-and-Ladies	O
<i>Corylus avellana</i>	Hazel	O
<i>Geum urbanum</i>	Wood avens	O
<i>Ranunculus repens</i>	Creeping buttercup	O
<i>Rosa canina</i> agg.	Dog rose	O
<i>Sambucus nigra</i>	Elder	O
<i>Ulmus procera</i>	English elm	O
<i>Hyacinthoides non-scripta</i>	Bluebell	R
<i>Quercus robur</i>	English oak	R
<i>Rumex sanguineus</i>	Wood dock	R

Target Note TN15

- 3.31 Hedgerow H3 is an outgrown hedgerow forming the boundary between fields F1 and F2. It has multiple small breaks carrying desire lines through the hedgerow and desire lines parallel both sides. The majority of the central line of the original hedgerow is quite gappy with several breaks in the upper canopy. Dead elm trees are present. It possesses strongest canopy continuity at its northern end. There are two mature ash trees located approximately centrally on its length. It is outgrown with bramble and nettle.



<i>Crataegus monogyna</i>	Hawthorn	A
<i>Prunus spinosa</i>	Blackthorn	A
<i>Rubus fruticosus</i> agg.	Bramble	A
<i>Hedera helix</i>	Ivy	F
<i>Urtica dioica</i>	Nettle	F
<i>Arum maculatum</i>	Lords-and-Ladies	O
<i>Corylus avellana</i>	Hazel	O
<i>Fraxinus excelsior</i>	Ash	O
<i>Geum urbanum</i>	Wood avens	O
<i>Ilex aquifolium</i>	Holly	O
<i>Ranunculus repens</i>	Creeping buttercup	O
<i>Rosa canina</i> agg.	Dog rose	O
<i>Sambucus nigra</i>	Elder	O
<i>Ulmus procera</i>	English elm	O
<i>Hyacinthoides non-scripta</i>	Bluebell	R
<i>Quercus robur</i>	English oak	R
<i>Rumex sanguineus</i>	Wood dock	R

Target Note TN16

- 3.32 Hedgerow H4 is an outgrown hedgerow between fields F2 and F3. Similar to most hedgerows at the site, it has desire lines paralleling both sides and a number of gaps which carry the desire lines across the boundary between the two adjacent fields. Dead elm trees are present. It possesses strongest canopy continuity along its northern half.



<i>Crataegus monogyna</i>	Hawthorn	D
<i>Hedera helix</i>	Ivy	F
<i>Prunus spinosa</i>	Blackthorn	F
<i>Rubus fruticosus</i> agg.	Bramble	F
<i>Silene dioica</i>	Red campion	F
<i>Urtica dioica</i>	Nettle	F
<i>Geum urbanum</i>	Wood avens	O
<i>Hyacinthoides non-scripta</i>	Bluebell	O
<i>Ilex aquifolium</i>	Holly	O
<i>Quercus robur</i>	English oak	O
<i>Sambucus nigra</i>	Elder	O
<i>Ulmus procera</i>	English elm	O
<i>Acer campestre</i>	Field maple	R
<i>Bryonia dioica</i>	White bryony	R
<i>Veronica hederifolia</i> <i>hederifolia</i>	Ivy-leaved speedwell	R

Target Note TN17

- 3.33 Hedgerow H5 is a very outgrown hedgerow located between fields F5 and F6. The original line of hedgerow is all but succeeded to scrub growth, primarily blackthorn. Evidence of the original central hedge line in the form of a few old hazel coppice is present in some locations. It should be noted that blackthorn outgrowth from this hedge is extremely dense and consequently some flora species may not have been detectable.



<i>Prunus spinosa</i>	Blackthorn	D
<i>Crataegus monogyna</i>	Hawthorn	A
<i>Hedera helix</i>	Ivy	F
<i>Arum maculatum</i>	Lords-and-Ladies	O
<i>Corylus avellana</i>	Hazel	O
<i>Galium aparine</i>	Cleavers	O
<i>Geranium robertianum</i>	Herb-robert	O

<i>Hyacinthoides non-scripta</i>	Bluebell	O
<i>Quercus robur</i>	English oak	O
<i>Veronica hederifolia hederifolia</i>	Ivy-leaved speedwell	O
<i>Stellaria holostea</i>	Greater stitchwort	R

Target Note TN18

- 3.34 Hedgerow H6 is a short section of close-managed hedgerow located adjacent to Broomhill Road. It has connectivity with the mature tree line located along the south boundary which in turn connects with W2. Opposite Broomhill Road is a greenspace with mature tree lines that are part of Eastwood Farm Local Nature Reserve (LNR) and Site of Nature Conservation Interest (SNCI).



<i>Crataegus monogyna</i>	Hawthorn	A
<i>Fraxinus excelsior</i>	Ash	A
<i>Urtica dioica</i>	Nettle	F
<i>Galium aparine</i>	Cleavers	O
<i>Geum urbanum</i>	Wood avens	O
<i>Hedera helix</i>	Ivy	O
<i>Arum maculatum</i>	Lords-and-Ladies	R
<i>Hyacinthoides x massartiana</i>	Hybrid bluebell	R

Woodland

Target Note TN19

- 3.35 Woodland W1 is secondary woodland located on the south edge of the site in the southwest. Only a small portion of the larger woodland is located within the site boundary. The area within the site is very scrubby with an extremely dense bramble understorey that reaches up to 3m in height in some places.



- 3.36 There is a small watercourse (WC) which flows on the transitional edge of this woodland with adjacent scrub habitat. The transition is delineated by stone boundary wall. The watercourse emerges from culvert under Bonville Road and re-enters culvert in the Victory Park before outfalling into Brislington Brook, some distance to the north of the site. The watercourse is shallow and the channel bed has a mix of stoney and silty substrates with no aquatic vegetation noted. The channel is ill-formed in places and the entire length of watercourse above ground is densely shaded by the overhead canopy.



<i>Rubus fruticosus</i> agg.	Bramble	A
<i>Salix fragilis</i>	Crack willow	F
<i>Urtica dioica</i>	Nettle	F
<i>Anthriscus sylvestris</i>	Cow parsley	O
<i>Asplenium scolopendrium</i>	Hart's-tongue	O
<i>Calystegia</i> sp.	Bindweed species	O
<i>Cardamine flexuosa</i>	Wavy bitter-cress	O
<i>Circaea lutetiana</i>	Enchanter's nightshade	O
<i>Crataegus monogyna</i>	Hawthorn	O
<i>Dryopteris filix-mas</i>	Male-fern	O
<i>Fraxinus excelsior</i>	Ash	O
<i>Galium aparine</i>	Cleavers	O
<i>Geranium robertianum</i>	Herb-robert	O
<i>Geum urbanum</i>	Wood avens	O
<i>Hedera helix</i>	Ivy	O
<i>Rumex sanguineus</i>	Wood dock	O
<i>Ulmus procera</i>	English elm	O
<i>Arum maculatum</i>	Lords-and-Ladies	R
<i>Dryopteris dilatata</i>	Broad buckler-fern	R
<i>Heracleum sphondylium</i>	Hogweed	R
<i>Hypericum androsaemum</i>	Tutsan	R
<i>Polystichum aculeatum</i>	Hard shield-fern	R
<i>Tamus communis</i>	Black bryony	R

3.37 Habitat condition assessment (Technical Appendix E Ref 7507.20.011) parcel ID(s): 81.

3.38 The woodland offsite beyond the southwest site boundary (atop the boundary wall) is an area of mature oak dominated woodland with frequent bluebell present.



Target Note TN20

- 3.39 Woodland W2 is a small area of secondary woodland located adjacent to Bonville Road in the southeast of the site. It is a scrubby woodland with occasional introduced species, especially in the northeast of the woodland. There are a couple of slightly more open areas with tall ruderal understory (predominantly willowherbs but in one case opening onto Bonville Road on the south edge is a large stand of Japanese knotweed). It has a scattered hawthorn/willow scrub layer and also an area of lower lying dense bramble scrub with occasional hop.





- 3.40 A public right of way passes through the woodland along the inside of the north edge. The track is gravelled for most of its length. The initial section leading off Bonville Road is more open and consequently ground flora adjacent to the path is more varied than further along where the canopy closes and shading more pronounced. Dead English elms are present along the path edge. Although in height they are comparable with the average woodland canopy height, they are not generally large trees.



<i>Salix fragilis</i>	Crack willow	A
<i>Anthriscus sylvestris</i>	Cow parsley	F
<i>Crataegus monogyna</i>	Hawthorn	F
<i>Fraxinus excelsior</i>	Ash	F
<i>Rubus fruticosus agg.</i>	Bramble	F
<i>Urtica dioica</i>	Nettle	F
<i>Acer campestre</i>	Field maple	O
<i>Acer pseudoplatanus</i>	Sycamore	O
<i>Alliaria petiolata</i>	Garlic mustard	O
<i>Arum maculatum</i>	Lords-and-Ladies	O
<i>Asplenium scolopendrium</i>	Hart's-tongue	O
<i>Calystegia sp.</i>	Bindweed species	O
<i>Chamaenerion angustifolium</i>	Rosebay willowherb	O
<i>Corylus avellana</i>	Hazel	O
<i>Dryopteris filix-mas</i>	Male-fern	O
<i>Fallopia japonica</i>	Japanese knotweed	O
<i>Galium aparine</i>	Cleavers	O
<i>Geranium robertianum</i>	Herb-robert	O
<i>Geum urbanum</i>	Wood avens	O
<i>Hedera helix</i>	Ivy	O
<i>Heracleum sphondylium</i>	Hogweed	O
<i>Humulus lupulus</i>	Hop	O
<i>Ilex aquifolium</i>	Holly	O
<i>Poa trivialis</i>	Rough meadow-grass	O
<i>Rumex sanguineus</i>	Wood dock	O
<i>Salix caprea</i>	Goat willow	O
<i>Sambucus nigra</i>	Elder	O
<i>Symphoricarpos albus</i>	Snowberry	O
<i>Ulmus procera</i>	English elm	O
<i>Vicia sepium</i>	Bush vetch	O
<i>Brachypodium sylvaticum</i>	False Brome	R
<i>Buddleja davidii</i>	Buddleia	R
<i>Dactylis glomerata</i>	Cock's-foot	R
<i>Dryopteris dilatata</i>	Broad buckler-fern	R
<i>Ficaria verna</i>	Lesser celandine	R
<i>Geranium dissectum</i>	Cut-leaved cranesbill	R
<i>Hyacinthoides hispanica</i>	Spanish bluebell	R
<i>Jacobaea vulgaris</i>	Common ragwort	R
<i>Quercus ilex</i>	Evergreen oak	R
<i>Ribes rubrum</i>	Redcurrant	R
<i>Rosa canina agg.</i>	Dog rose	R
<i>Stachys sylvatica</i>	Hedge woundwort	R
<i>Veronica hederifolia hederifolia</i>	Ivy-leaved speedwell	R

- 3.41 Habitat condition assessment (Technical Appendix E Ref 7507.20.011) parcel ID(s): 48, 49, 59, 60, 61, 69, 78, 70, 80.

Target Note TN21

- 3.42 Woodland W3 is a linear plantation broadleaf woodland set on a very steep bank down to School Road. The woodland provides an effective screening function. It has

a scrubby understorey. Woody scrub extends into the site before merging with dense bramble scrub. The ground flora is severely depleted due to the combination of shade and grazing pressure. Field F6 was previously (until approximately 2020) let for pony grazing and it is also known to be frequented by deer, which would find shelter beneath this scrub canopy in a site that is otherwise quite heavily disturbed by dog walkers. There is bark damage evident on most of the woody growth. F6 remains under grazing tenancy but the paddock and grazing area have since been substantially reduced to the south corner of F6.



<i>Acer pseudoplatanus</i>	Sycamore (incl. seedling & saplings)	F
<i>Fraxinus excelsior</i>	Ash	F
<i>Hedera helix</i>	Ivy	F
<i>Prunus spinosa</i>	Blackthorn	F
<i>Rubus fruticosus</i> agg.	Bramble	F
<i>Urtica dioica</i>	Nettle	F
<i>Crataegus monogyna</i>	Hawthorn	O
<i>Lolium perenne</i>	Perennial ryegrass	O
<i>Quercus robur</i>	English oak	O
<i>Sambucus nigra</i>	Elder	O
<i>Ulmus procera</i>	English elm	O
<i>Galium aparine</i>	Cleavers	R
<i>Geranium robertianum</i>	Herb-robert	R
<i>Poa</i> sp.	Meadow-grass species	R

3.43 Habitat condition assessment (Technical Appendix E Ref 7507.20.011) parcel ID(s): 82.

Scrub and Other Habitats

Target Note TN22

- 3.44 An enclosed section of footpath from the southwest corner of the site leading to School Road. A thin bare earth pathway, generally quite muddy, parallels the south fence which is shaded by cypress trees from the adjacent allotment. A width of scrub and occasional trees to the north of the path complete the enclosed footpath.
- 3.45 The entire footprint is within the Brislington Meadows SNCI. The path is part of a Public Right of Way leading into the site and also into the adjacent Brislington Meadows SNCI and Victory Park.



<i>Cupressus x leylandii</i>	Leyland cypress	A
<i>Hedera helix</i>	Ivy	F
<i>Alliaria petiolata</i>	Garlic mustard	O
<i>Cornus sanguinea</i>	Dogwood	O
<i>Corylus avellana</i>	Hazel	O
<i>Crataegus monogyna</i>	Hawthorn	O
<i>Fraxinus excelsior</i>	Ash	O
<i>Geranium robertianum</i>	Herb-robert	O
<i>Prunus sp.</i>	Cherry species	O
<i>Prunus spinosa</i>	Blackthorn	O
<i>Rubus fruticosus agg.</i>	Bramble	O
<i>Sambucus nigra</i>	Elder	O
<i>Urtica dioica</i>	Nettle	O
<i>Aesculus hippocastanum</i>	Horse-chestnut	R
<i>Arum maculatum</i>	Lords-and-Ladies	R
<i>Quercus ilex</i>	Evergreen oak	R

<i>Ribes rubrum</i>	Redcurrant	R
<i>Sisymbrium officinale</i>	Hedge mustard	R
<i>Symphoricarpos albus</i>	Snowberry	R
<i>Syringa vulgaris</i>	Lilac	R

- 3.46 Habitat condition assessment (Technical Appendix E Ref 7507.20.011) parcel ID(s): 83, 84, 85, 86.

Target Note TN23

- 3.47 Boundary vegetation belt along the northwest boundary of field F4. This boundary comprises a deep and dense belt of blackthorn scrub, established from what was likely to have been a hazel, blackthorn and hawthorn hedge originally. The scrub outgrowth has developed to the extent is has subsumed any original hedgerow structure in this location. The pressure from dog walkers and other public access along the desire line that parallels the boundary appears to exert some level of control against encroachment. There is a mature ash tree present further in the belt of scrub. Hazel and bramble are also present. Excluding the ash, the average height reaches around 2m to 3m.



<i>Prunus spinosa</i>	Blackthorn	A
<i>Rubus fruticosus agg.</i>	Bramble	A
<i>Corylus avellana</i>	Hazel	O
<i>Crataegus monogyna</i>	Hawthorn	O
<i>Fraxinus excelsior</i>	Ash	R
<i>Galium aparine</i>	Cleavers	R
<i>Quercus robur</i>	English oak	R
<i>Urtica dioica</i>	Nettle	R

- 3.48 Habitat condition assessment (Technical Appendix E Ref 7507.20.011) parcel ID(s): 24.

Target Note TN24

- 3.49 Boundary vegetation along the south edge of field F4. A wide spreading bramble belt, reaching up to nearly 2m in height in some places, extends from the rear line of mature trees situated along the shared boundary with Brislington Meadows SNCI/Victory Park. The trees include oak, holly and hazel and appear to be a remnant of an old abandoned hedge line. One oak tree at the northern end was assessed to be a veteran. This and another nearby oak have substantial cavities present, identified during aerial tree survey. The dense bramble has very occasional sampling of oak and elder visible. Creeping thistle and rosebay willowherb are found in the front edge of the bramble belt, with willowherb becoming more frequent along the north tip.
- 3.50 This wide swathe of bramble and mixed scrub appears to be the route for the definitive Public Right of Way (between School Road and Bonville Road), but it clearly became too vegetated at some point. An extremely well-worn desire line now travels up into the grassland fields loosely paralleling the edge of the bramble belt.



<i>Rubus fruticosus</i> agg.	Bramble	D
<i>Anthriscus sylvestris</i>	Cow parsley	F
<i>Corylus avellana</i>	Hazel	F
<i>Urtica dioica</i>	Nettle	F
<i>Chamaenerion angustifolium</i>	Rosebay willowherb	O
<i>Crataegus monogyna</i>	Hawthorn	O
<i>Ficaria verna</i>	Lesser celandine	O
<i>Fraxinus excelsior</i>	Ash	O
<i>Geum urbanum</i>	Wood avens	O
<i>Hedera helix</i>	Ivy	O
<i>Hyacinthoides non-scripta</i>	Bluebell	O
<i>Prunus spinosa</i>	Blackthorn	O
<i>Rumex sanguineus</i>	Wood dock	O
<i>Sambucus nigra</i>	Elder	O
<i>Quercus robur</i>	English oak	R

- 3.51 Habitat condition assessment (Technical Appendix E Ref 7507.20.011) parcel ID(s):38, 98.

Target Note TN25

- 3.52 Boundary vegetation along the south edge of field F3 and curving round the north edge of F3a. It is a wide and, in some places, sprawling belt of scrubby vegetation with occasional trees. Within the extent of the site boundary, the central section of this boundary vegetation becomes dominated by bramble and then diversifies again into the tall mixed scrub that transitions into woodland W1. The scrub ranges from approximately 1m to 4m in height.



<i>Prunus spinosa</i>	Blackthorn	A
<i>Rubus fruticosus</i> agg.	Bramble	A
<i>Arum maculatum</i>	Lords-and-Ladies	O
<i>Crataegus monogyna</i>	Hawthorn	O
<i>Ficaria verna</i>	Lesser celandine	O
<i>Fraxinus excelsior</i>	Ash	O
<i>Hyacinthoides non-scripta</i>	Bluebell	O
<i>Ilex aquifolium</i>	Holly	O
<i>Prunus avium</i>	Wild cherry	O
<i>Rumex sanguineus</i>	Wood dock	O
<i>Salix</i> sp.	Willow species	O
<i>Bryonia dioica</i>	White bryony	R
<i>Corylus avellana</i>	Hazel	R
<i>Quercus robur</i>	English oak	R
<i>Tamus communis</i>	Black bryony	R
<i>Viola canina</i>	Heath dog-violet	R

- 3.53 Habitat condition assessment (Technical Appendix E Ref 7507.20.011) parcel ID(s): 35, 53.

Target Note TN26

- 3.54 Boundary vegetation along the south edge of field area F3a, on the north edge of woodland W1. It is a wide and sprawling belt of tall mixed scrubby vegetation and occasional young trees. Bramble is present throughout, becoming more dominant along the edge. The scrub ranges from approximately 1m to 4m in height. Occasional dead trees, likely to be elm, are visible towards the rear edge of the scrub belt.



<i>Rubus fruticosus</i> agg.	Bramble	A
<i>Urtica dioica</i>	Nettle	F
<i>Buddleja</i> sp.	Buddleia	O
<i>Calystegia sepium</i>	Hedge bindweed	O
<i>Crataegus monogyna</i>	Hawthorn	O
<i>Prunus spinosa</i>	Blackthorn	O
<i>Sambucus nigra</i>	Elder	O
<i>Salix</i> sp.	Willow species	R
<i>Corylus avellana</i>	Hazel	R
<i>Fraxinus excelsior</i>	Ash	R
<i>Galium aparine</i>	Cleavers	R
<i>Pteridium aquilinum</i>	Bracken	R
<i>Quercus robur</i>	English oak	R
<i>Sorbus aucuparia</i>	Rowan	R

- 3.55 Habitat condition assessment (Technical Appendix E Ref 7507.20.011) parcel ID(s): 52.

Target Note TN27

- 3.56 Boundary vegetation along Bonville Road. This boundary comprises several smaller parcels of a mix of habitat types including scrub, trees, tall ruderal and rank grass.

There is a section of verge comprising mown amenity grass and section with some recent young tree planting (not implemented by Homes England). There is also a small stand of Japanese knotweed, enclosed in an exclusion zone of chespaie fencing, undergoing treatment.



<i>Arrhenatherum elatius</i>	False oat-grass	A
<i>Rubus fruticosus</i> agg.	Bramble	A
<i>Buddleja davidii</i>	Buddleia	O
<i>Dryopteris dilatata</i>	Broad buckler-fern	O
<i>Salix caprea</i>	Goat willow	O
<i>Sambucus nigra</i>	Elder	O
<i>Urtica dioica</i>	Nettle	O
<i>Cotoneaster</i> sp.	Cotoneaster species	R
<i>Malus domestica</i>	Apple	R
<i>Reynoutria japonica</i>	Japanese knotweed	R
<i>Sorbus aucuparia</i>	Rowan	R

- 3.57 Habitat condition assessment (Technical Appendix E Ref 7507.20.011) parcel ID(s): 4, 33, 57, 58.

Target Note TN28

- 3.58 Boundary vegetation present along the north boundary of F5. The boundary is shared with the adjacent Broomhill Junior School and Infant School. Security weldmesh fencing forms the boundary and scattered trees are present, some of the site side (including some dead elms) and some on the school side of the fence. The larger of

the trees present tend to be on the school side. The boundary vegetation within the site is dominated by bramble.



<i>Rubus fruticosus</i> agg.	Bramble	A
<i>Prunus spinosa</i>	Blackthorn	F
<i>Acer pseudoplatanus</i>	Sycamore	O
<i>Corylus avellana</i>	Hazel	O
<i>Crataegus monogyna</i>	Hawthorn	O
<i>Fraxinus excelsior</i>	Ash	O
<i>Sambucus nigra</i>	Elder	O
<i>Quercus robur</i>	English oak	R

3.59 Habitat condition assessment (Technical Appendix E Ref 7507.20.011) parcel ID(s): 40.

Target Note TN29

3.60 Boundary vegetation around the northeast and northwest of field F1. The northwest boundary is shared with Broomhill Junior School. It is defined by the school's security fence with a narrow but dense belt of bramble and scattered trees. Larger sized lime and sycamore trees are located along this boundary but are offsite, within the school grounds. The school was not directly accessible for ecological survey, but the ecological assessment has been supported by third party data and photographs.



- 3.61 The northeast boundary backs a narrow private track to the rear of residential properties along Belroyal Avenue. There is a narrow desire line which enters the site in the corner of this boundary from the track. The northeast boundary has a low bund with mature trees, taller scrub and bramble. The rear side of the boundary has evidence of garden waste tipping, ranging from brash piles to large timber remains. There are occasional introduced species in the rear edge, such as bear's britches, that are not visible from or within the scrub belt on the site side. The southern end of the private track is blocked with stored materials, including a small boat, and dense scrub. This point is impassable, so the track does not connect with the Public Right of Way which runs through the woodland W2.
- 3.62 There is a small group of cherry trees in the north corner, offset slight from the boundary vegetation. Several have guards present, which leads to conclude they

may have been planted, although wild cherry does also occur in the scrub on the boundary.



<i>Prunus spinosa</i>	Blackthorn	F
<i>Rubus fruticosus</i> agg.	Bramble	F
<i>Urtica dioica</i>	Nettle	F
<i>Crataegus monogyna</i>	Hawthorn	O
<i>Sambucus nigra</i>	Elder	O
<i>Ulmus procera</i>	English elm	O
<i>Ilex aquifolium</i>	Holly	R
<i>Prunus avium</i>	Wild cherry	R
<i>Quercus robur</i>	English oak	R

3.63 Habitat condition assessment (Technical Appendix E Ref 7507.20.011) parcel ID(s): 22, 25.

Target Note TN30

- 3.64 Boundary vegetation along the south boundary between woodland W2 and Broomhill Road. The boundary comprises a mature tree line and scrub bordering private garden boundaries.



<i>Crataegus monogyna</i>	Hawthorn	F
<i>Hedera helix</i>	Ivy	F
<i>Arum maculatum</i>	Lords-and-Ladies	O
<i>Fraxinus excelsior</i>	Ash	O
<i>Iris foetidissima</i>	Stinking Iris	O
<i>Primula species</i>	Garden Primula	O

<i>Ulmus procera</i>	English elm	O
<i>Sambucus nigra</i>	Elder	O
<i>Acer platanoides</i>	Norway maple	R
<i>Quercus robur</i>	English oak	R

3.65 Recent native hedgerow planting was undertaken by Homes England following demolition of Sinnott House to strengthen the boundary and improve screening to the adjacent residential properties. The hedge planting is excluded from this target note for the purposes of describing the ecological baseline.

3.66 Habitat condition assessment (Technical Appendix E Ref 7507.20.011) parcel ID(s): 46.

Target Note 31

3.67 Public footpath leading into Victory Park south of the site. Tall scrub, predominantly blackthorn with some hazel, leads past the Chalet allotment boundary into Victory Park / Brislington Meadows SNCI. The footpath through the scrub is worn to bare ground. Ground flora beneath the tall scrub mainly comprises bramble and ivy. The path opens out into the more open grassland of the park, which comprises a mix of rough neutral grassland and wide short grass trails. There are occasional small patches of scrub, young trees (some planted, some potentially self-set) and mature trees scattered across the park grassland.





<i>Lolium perenne</i>	Perennial ryegrass	F
<i>Hedera helix</i>	Ivy	O
<i>Prunus spinosa</i>	Blackthorn	O
<i>Rubus fruticosus agg.</i>	Bramble	O
<i>Corylus avellana</i>	Hazel	R
<i>Crataegus monogyna</i>	Hawthorn	O
<i>Ficaria verna</i>	Lesser celandine	R
<i>Ilex aquifolium</i>	Holly	R
<i>Poa sp.</i>	Meadow-grass species	R
<i>Quercus robur</i>	English oak (Saplings)	R
<i>Salix sp.</i>	Willow species	R
<i>Urtica dioica</i>	Nettle	R

3.68 Habitat condition assessment (Technical Appendix E Ref 7507.20.011) parcel ID(s): 90, 91, 92, 93, 94.

Target Note 32

- 3.69 A linear strip along the west boundary of Broomhill Primary School. Direct access into the school wasn't available for ecological survey, but the ecological assessment has been supported by third party data and photographs.
- 3.70 The strip comprises entirely amenity grassland, with small areas hardstanding in the form of a path to a covered bicycle store and the tarmac road entrance and verges.
- 3.71 The amenity grassland is maintained in a short sward. It generally slopes down from the school entrance in the north to the site boundary in the south. Weldmesh fences form the west and south boundaries.





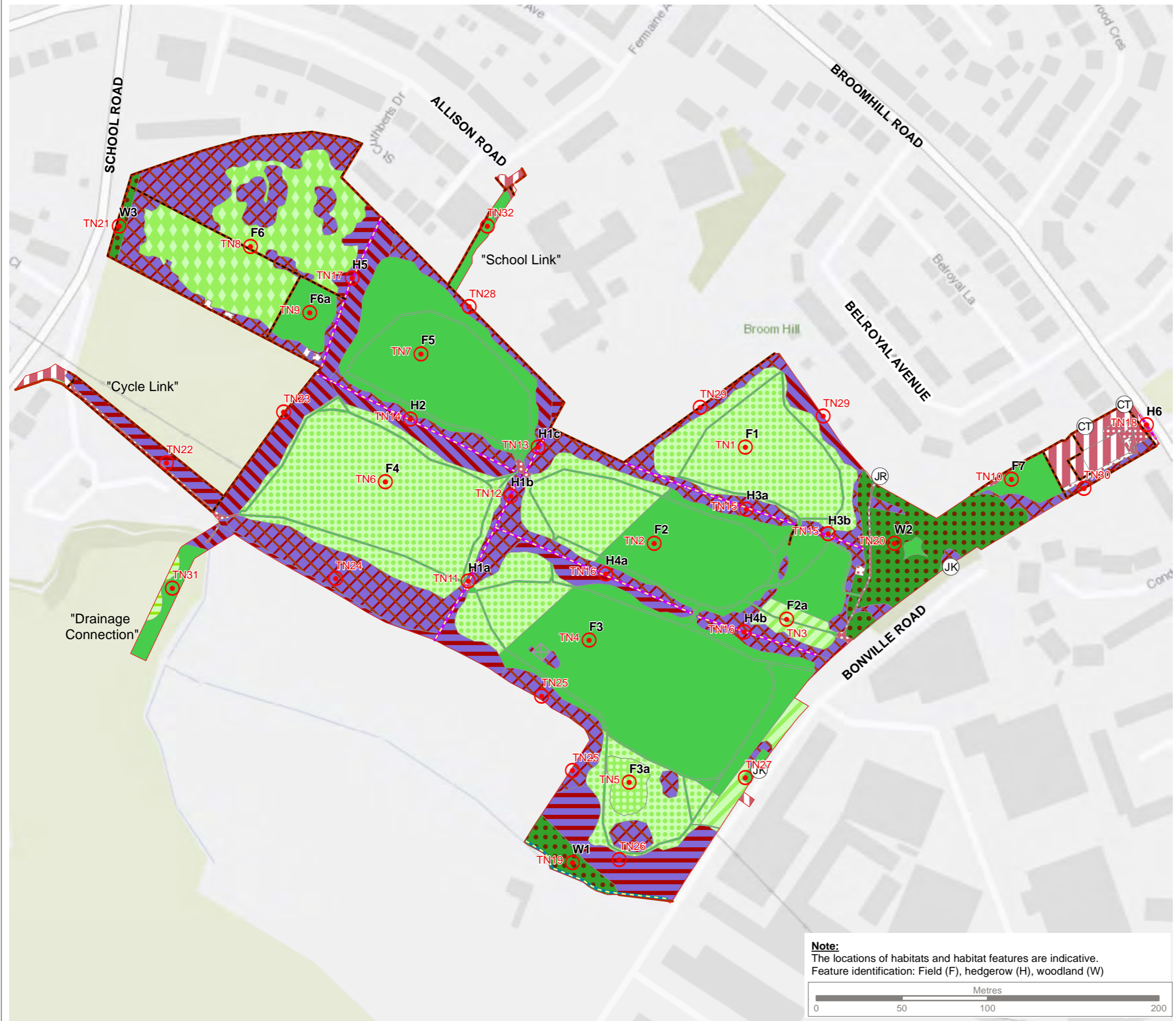
- 3.72 Habitat condition assessment (Technical Appendix E Ref 7507.20.011) parcel ID(s): 95, 96, 97.



Drawings

G7507.20.011 Habitat Baseline

G7507.20.058 Target Note and Habitat Parcel Locations



KEY

- Site boundary
- Target Note (TN)
- Schedule 9 Non-native Invasive Plants**
 - Cotoneaster (*C. horizontalis*)
 - Japanese knotweed (*Fallopia japonica*)
 - Japanese rose (*Rosa rugosa*)
- Habitat Survey (UKHab)**
 - h2a - Hedgerow (priority habitat)
 - r2b - Other rivers and streams
 - u1e(68) - Urban linear feature - wall
 - u1e(69) - Urban linear feature - fence
 - g3 - neutral grassland
 - g3c - Other neutral grassland
 - g3c5 - Arrhenatherum neutral
 - g3c6 - Lolium-Cynosurus neutral grassland
 - g3c8 - Holcus-Juncus neutral grassland
 - g4 - Modified grassland
 - h3a6 - Other blackthorn scrub
 - h3d - Bramble scrub
 - h3h - Mixed scrub
 - u1b - Developed land, sealed surface
 - u1b5 - Buildings
 - u1c - Artificial unvegetated unsealed
 - w1g - Other woodland, broadleaved

Reproduced by permission of Ordnance Survey on behalf of Her Majesty's Stationery Office.
© Crown copyright and database rights 2022. All rights reserved.



Rev	Description	Drawn	Approved	Date



THE ENVIRONMENT PARTNERSHIP

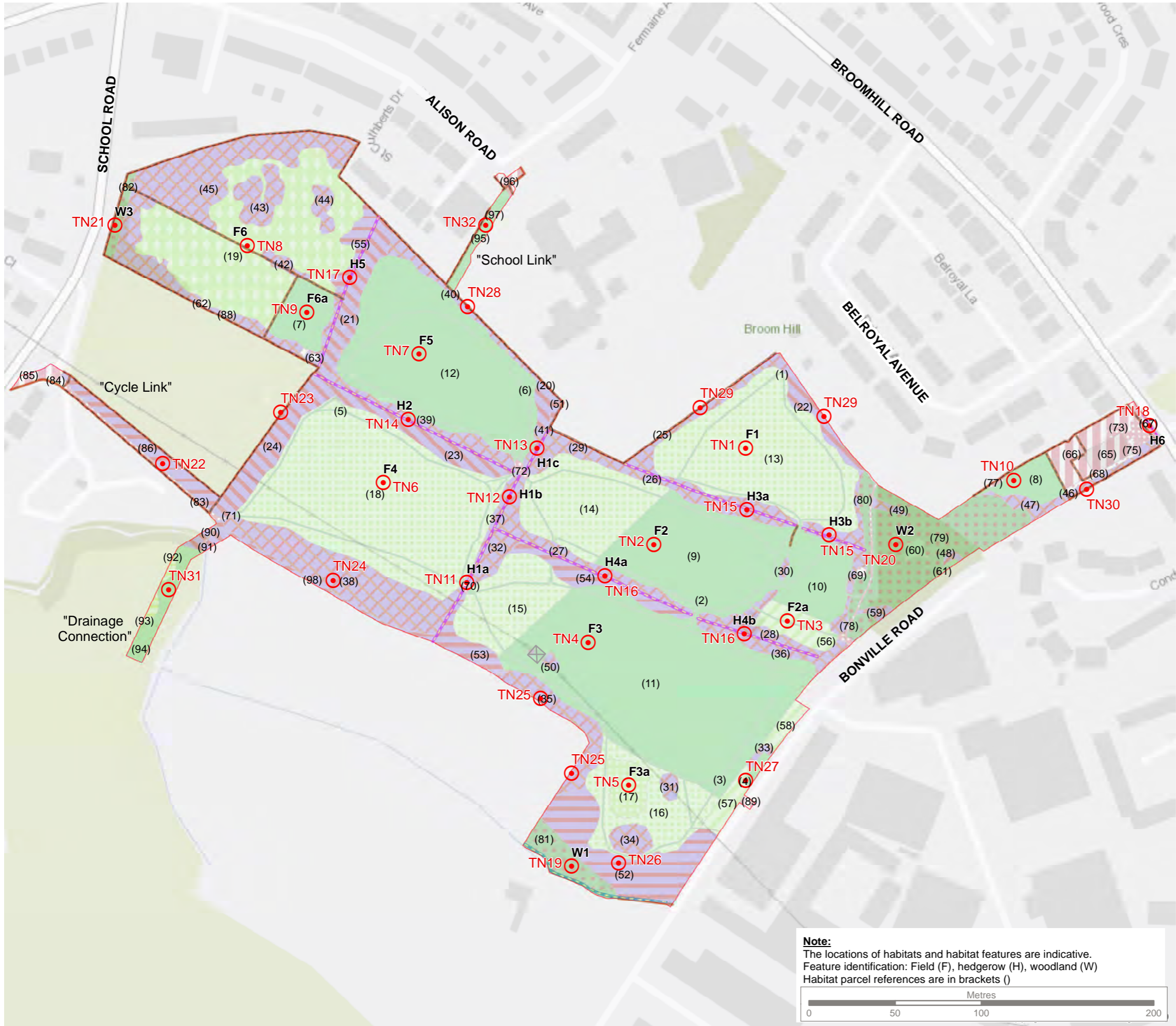
Genesis Centre, Birchwood Science Park, Warrington WA3 7BH
Tel 01925 844004 e-mail tep@tep.uk.com www.tep.uk.com

Project
Brislington Meadows

Title
Habitats Baseline

Drawing Number
G7507.20.011

Drawn	Checked	Approved	Scale	Date
RR	CB	VG	1:2,250 @ A3	22/02/2022



KEY

- Target Note (TN)
- Site boundary
- h2a(77) - Hedgerow (priority habitat) (neglected)
- r2b - Other rivers and streams
- u1e(68) - Urban linear feature - wall
- u1e(69) - Urban linear feature - fence
- g3 - neutral grassland
- g3c - Other neutral grassland
- g3c5 - Arrhenatherum neutral grassland
- g3c6 - Lolium-Cynosurus neutral grassland
- g3c8 - Holcus-Juncus neutral grassland
- g4 - Modified grassland
- h3a6 - Other blackthorn scrub
- h3d - Bramble scrub
- h3h - Mixed scrub
- u1b - Developed land, sealed surface
- u1b5 - Buildings
- u1c - Artificial unvegetated unsealed surface
- w1g - Other woodland, broadleaved



Reproduced by permission of Ordnance Survey on behalf of Her Majesty's Stationery Office.

© Crown copyright and database rights 2022. All rights reserved.



Rev	Description	Drawn	Approved	Date



THE ENVIRONMENT PARTNERSHIP

Genesis Centre, Birchwood Science Park, Warrington WA3 7BH
Tel 01925 844004 e-mail tep@tep.uk.com www.tep.uk.com

Project
Brislington Meadows

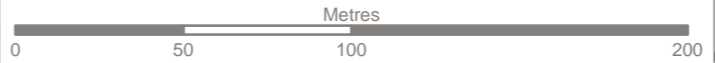
Title
Target Note and Habitat Parcel Locations

Drawing Number
G7507.20.058

Drawn	Checked	Approved	Scale	Date
RR	CB	VG	1:2,250 @ A3	22/02/2022

Note:

The locations of habitats and habitat features are indicative.
Feature identification: Field (F), hedgerow (H), woodland (W)
Habitat parcel references are in brackets ()





HEAD OFFICE

Genesis Centre,
Birchwood Science Park,
Warrington
WA3 7BH

Tel: 01925 844004
E-mail: tep@tep.uk.com

MARKET
HARBOROUGH

The Reynard Suite,
Bowden Business Village,
Market Harborough,
Leicestershire,
LE16 7SA

Tel: 01858 383120
E-mail: mh@tep.uk.com

GATESHEAD

Office 26, Gateshead
International Business
Centre,
Mulgrave Terrace,
Gateshead
NE8 1AN

Tel: 0191 605 3340
E-mail: gateshead@tep.uk.com

LONDON

8 Trinity Street,
London
SE1 1DB

Tel: 020 3096 6050
E-mail: london@tep.uk.com

CORNWALL

4 Park Noweth,
Churchtown,
Cury,
Helston
Cornwall
TR12 7BW

Tel: 01326 240081
E-mail: cornwall@tep.uk.com
