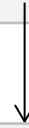


Bristol City Council Adult Care Strategic Commissioning

June 2025

Executive Director –
Adults and Communities

Hugh Evans



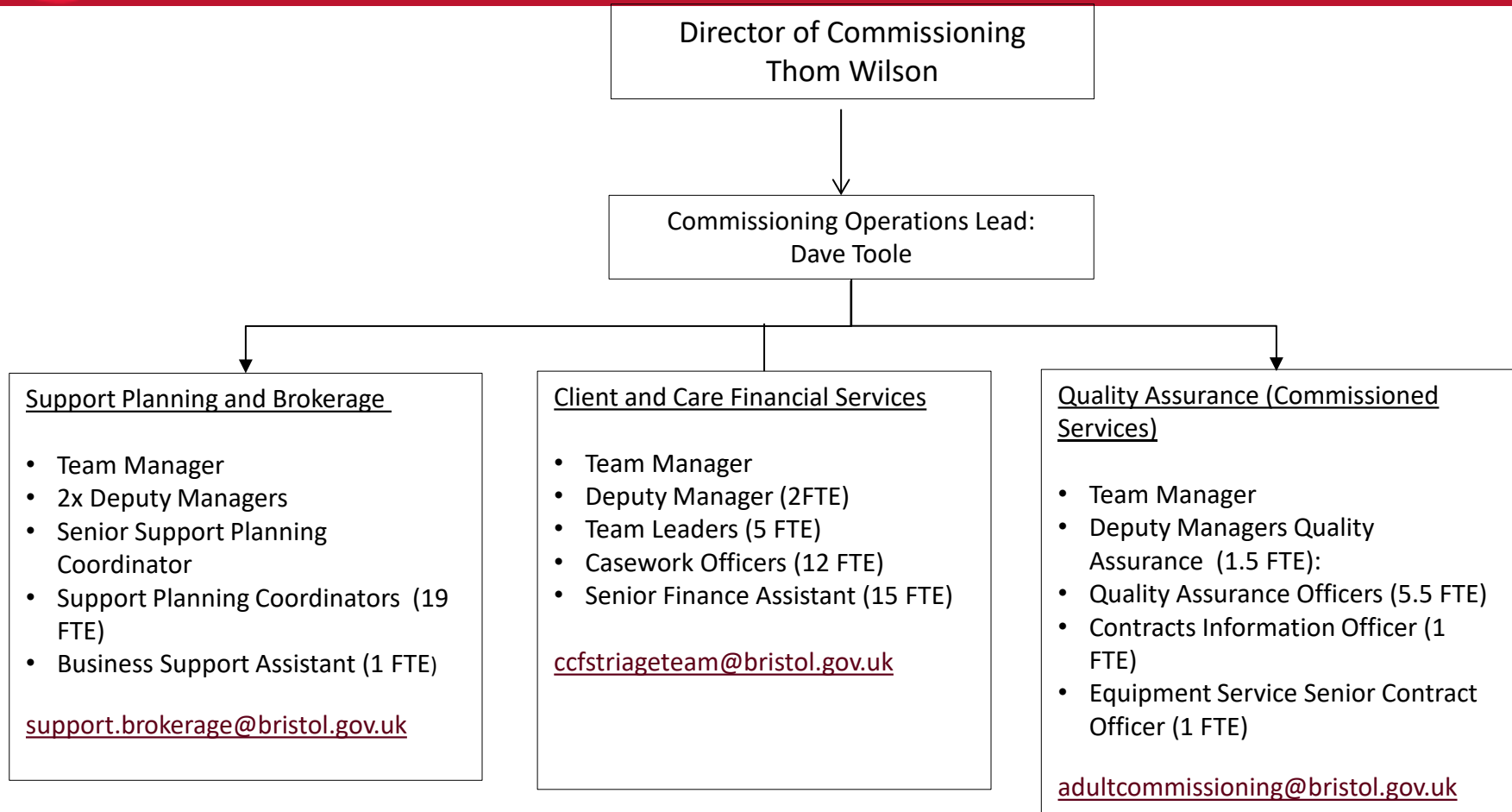
Director of
Commissioning

Thom Wilson



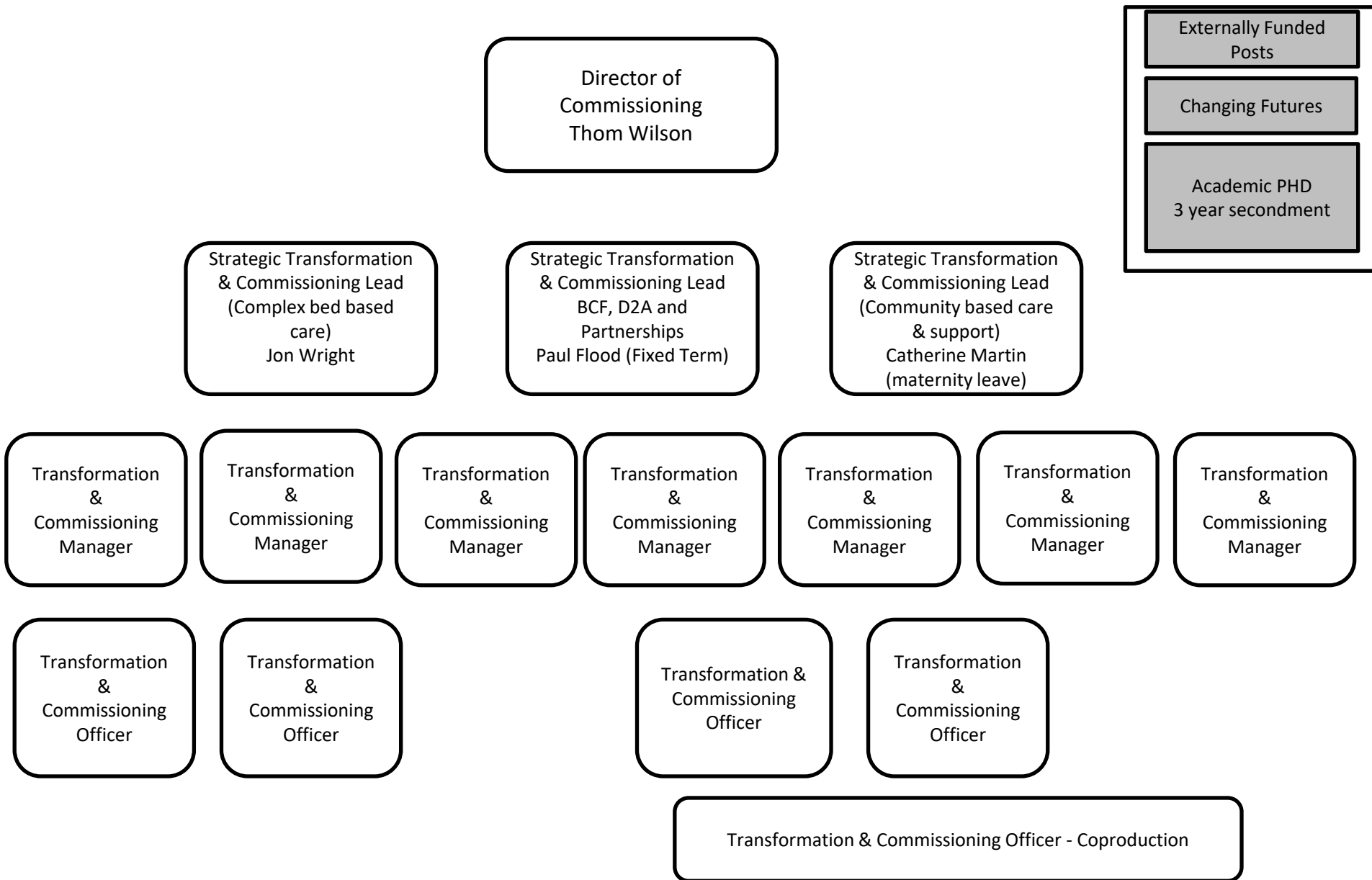
- Strategic Transformation & Commissioning Lead (Complex bed based care) - Jon Wright
- Strategic Transformation & Commissioning Lead (Community based care) - Catherine Martin (Currently on Maternity Leave)
- Commissioning Operations Lead :- Dave Toole
- Specialist Accommodation Framework Manager: Joe Wheeler (Fixed Term)
- Strategic Transformation & Commissioning Lead, BCF, D2A and Partnerships, Paul Flood (Fixed Term)
- For general enquiries adultcommissioning@bristol.gov.uk

Quality Assurance, Support Planning and Brokerage and Client and Carer Financial Services



Contract Management for Adult Social Care Strategic contracts is provided
by ascontractmanagement@bristol.gov.uk

Transformation and Commissioning Team



Specialist Commissioning Teams

Specialist
Accommodation
Framework Manager
Joe Wheeler (Fixed
Term)

Strategic Transformation &
Commissioning Lead
(Complex bed based care)
Jon Wright

Learning Disability & Autism Team

1 x Transformation and Commissioning Manager

4 x Transformation and Commissioning Manager
(Fixed term)

Market Analysis Team

Team Manager (Fixed term)

Senior Contracts and Quality Officer (Fixed
Term)

Social Workers – 2.5FTE