

Church Road

Location plan

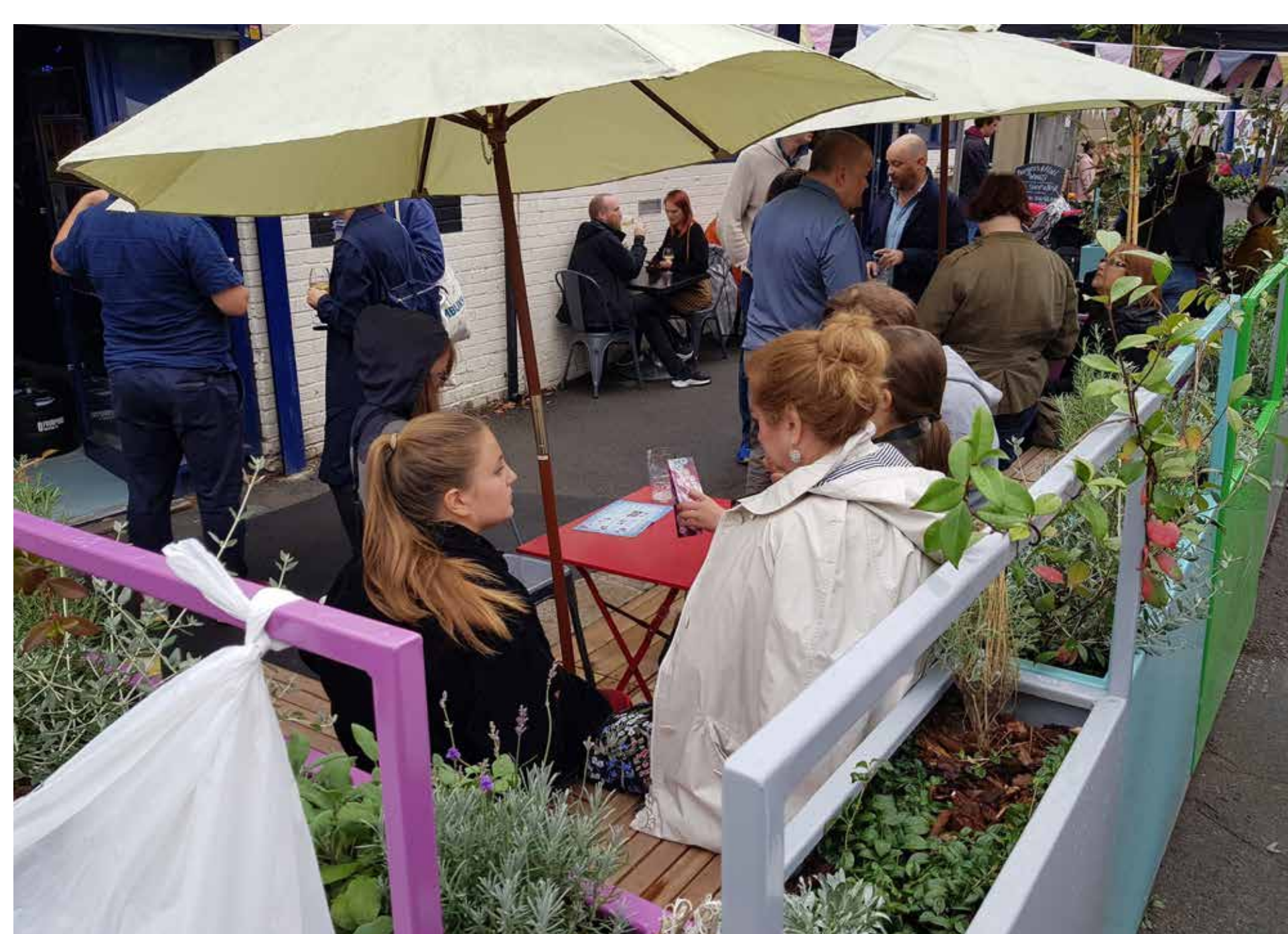


© Crown Copyright and database right 2023. Ordnance Survey AC0000807971

All the pictures are examples from other places, just to give a bit of an idea of how things might look



Several shop shutters will become canvases for new public art commissions produced by talented local artists



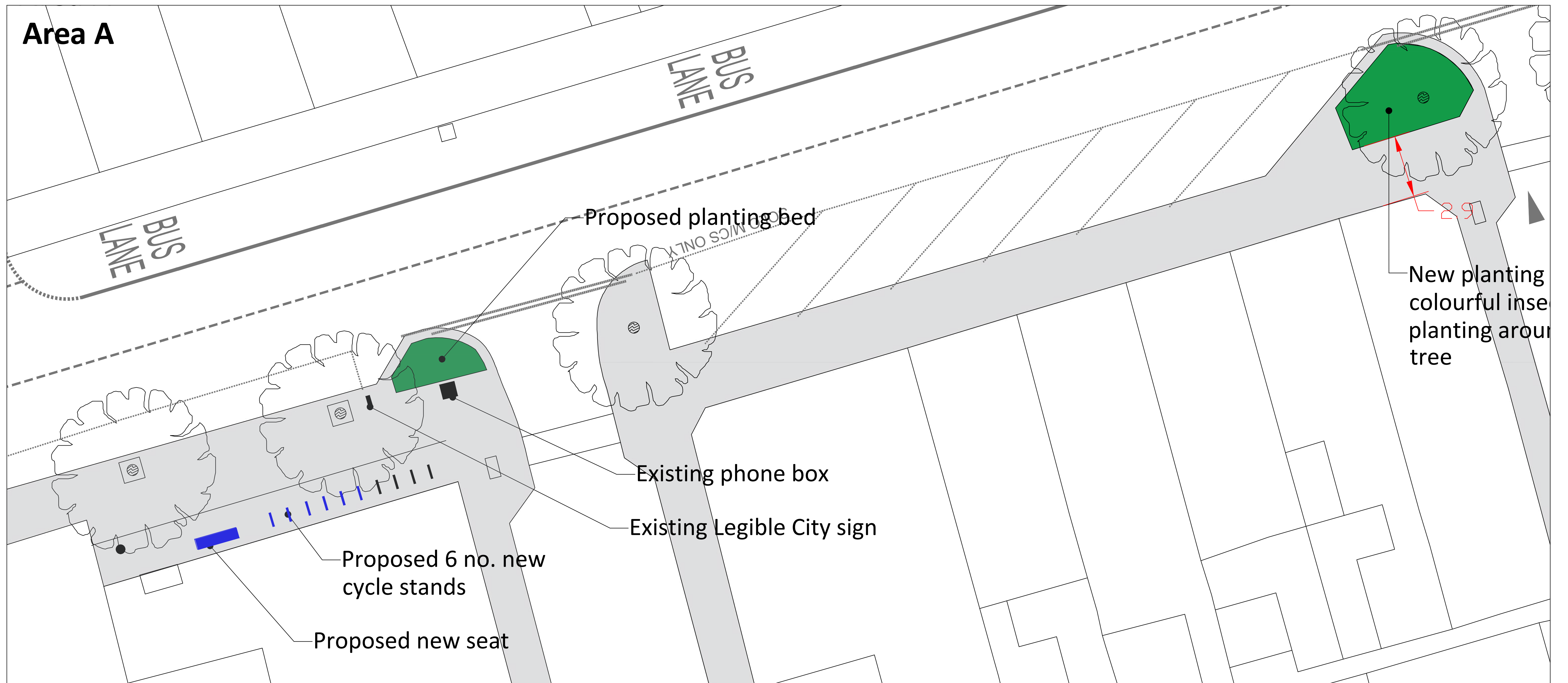
Parklets along the street will create secluded areas of seating and planting and may incorporate colourful art work



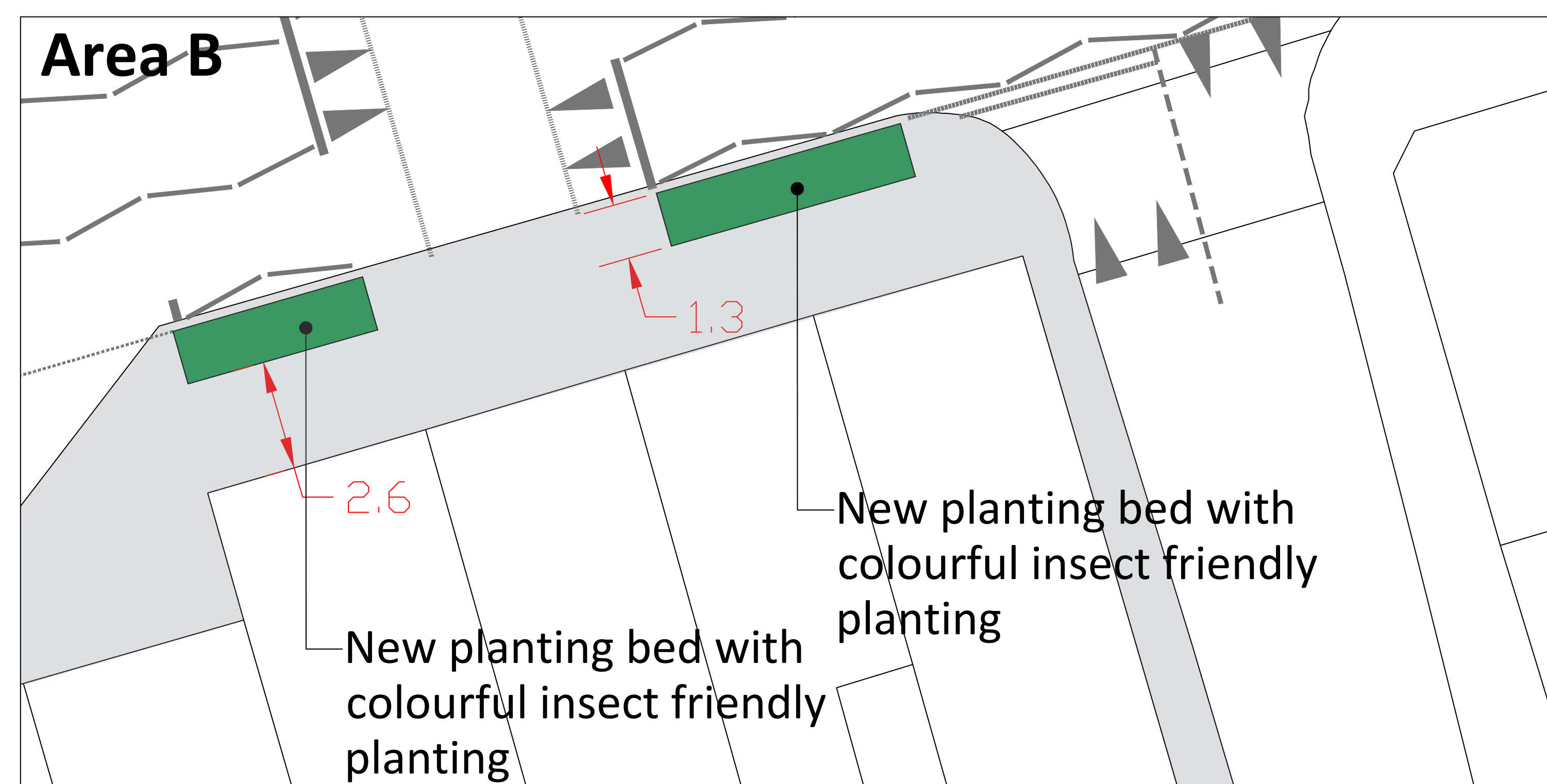
New areas of planting in buildouts and along wider areas of the street will bring colour and attract pollinators

Church Road

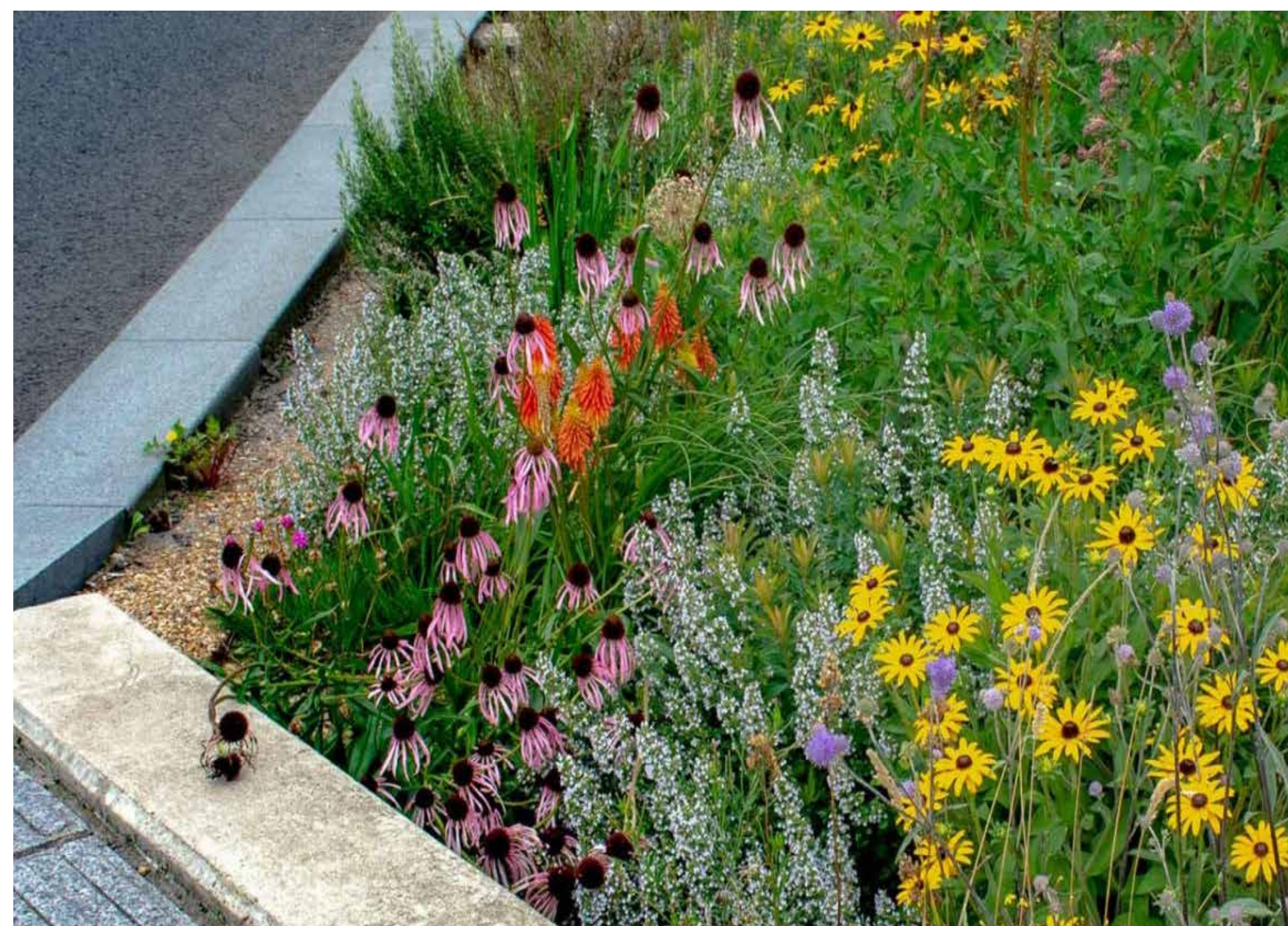
Location plan



© Crown Copyright and database right 2023. Ordnance Survey AC0000807971



All the pictures are examples from other places, just to give a bit of an idea of how things might look

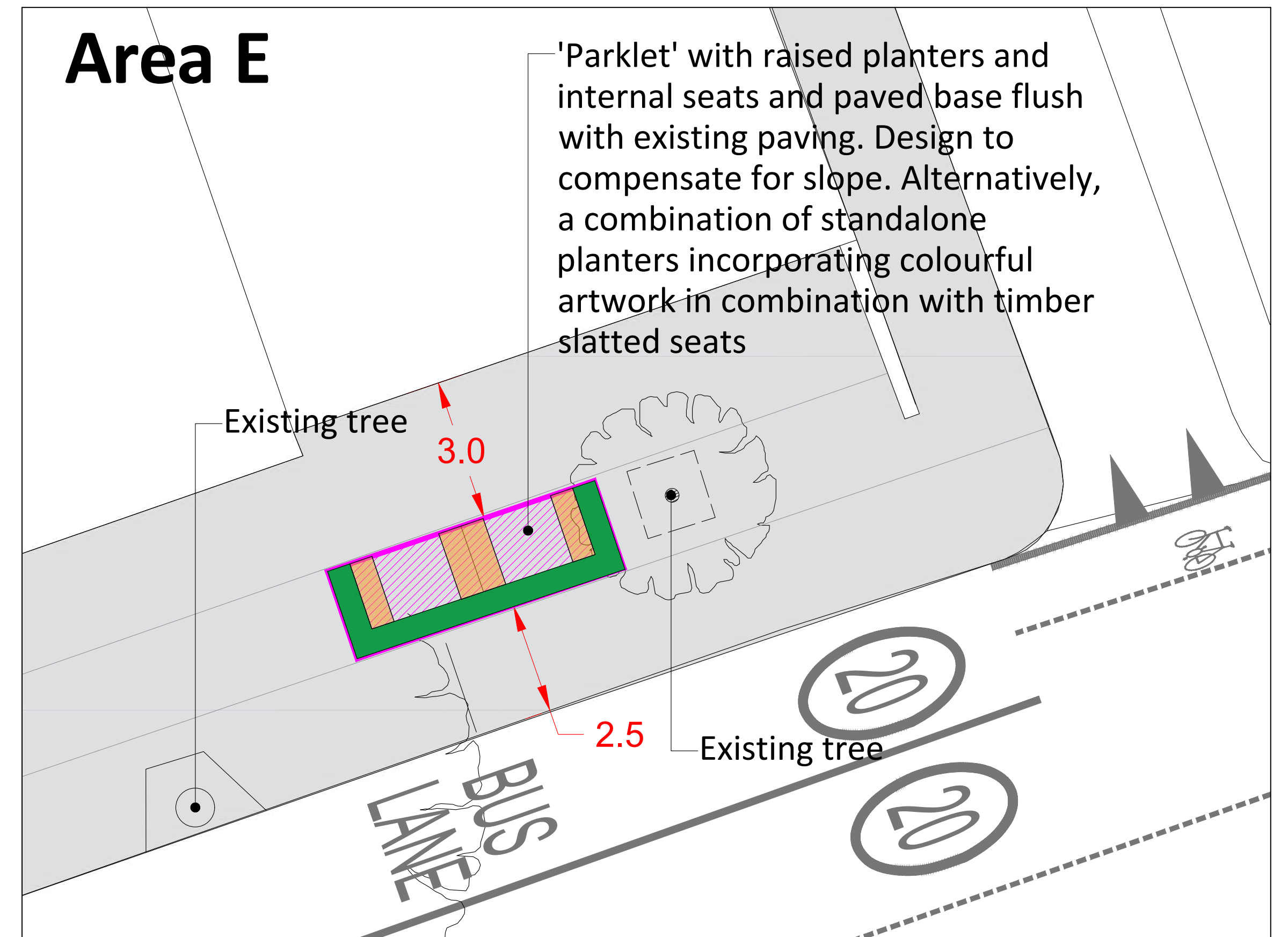
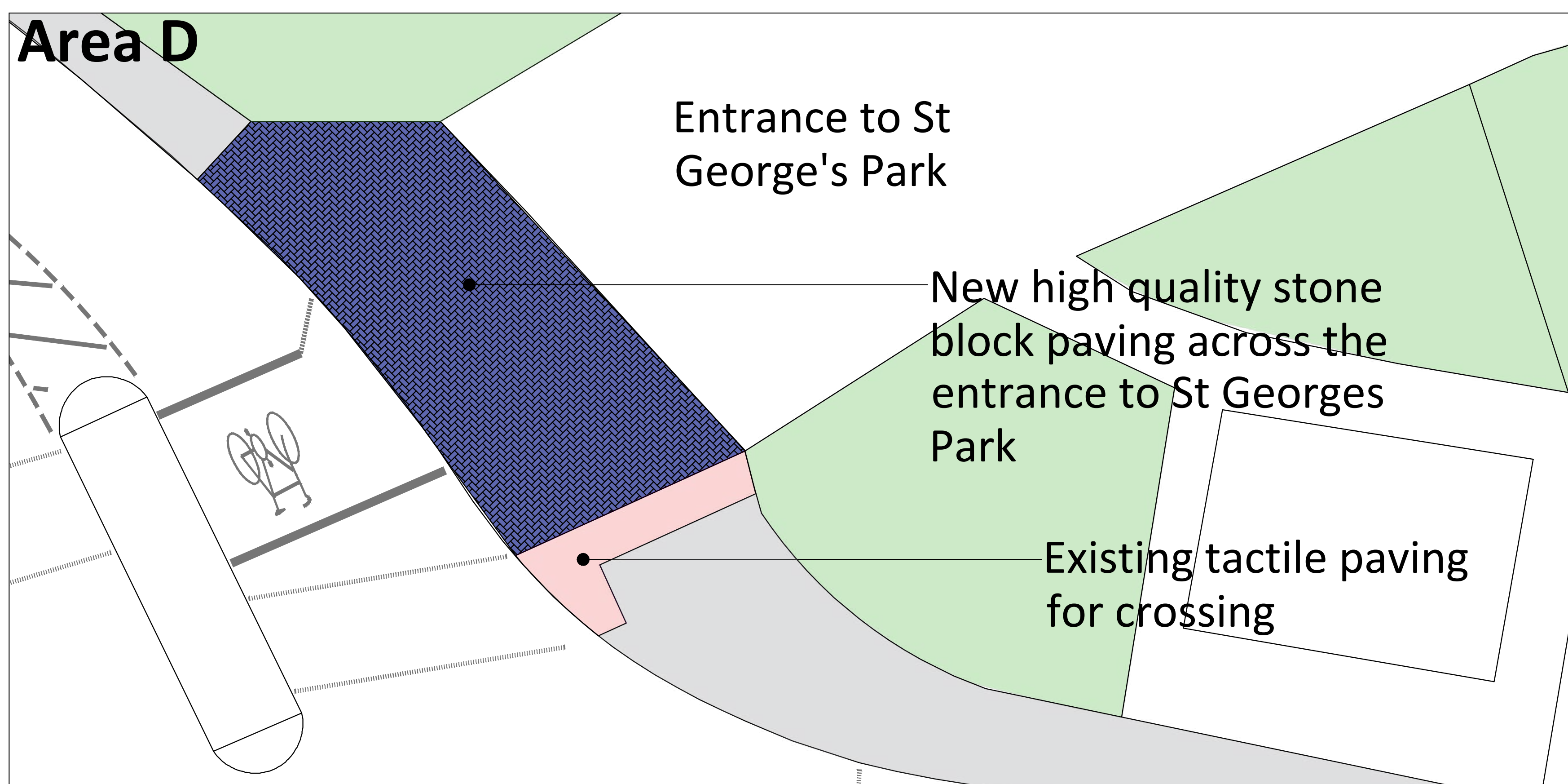
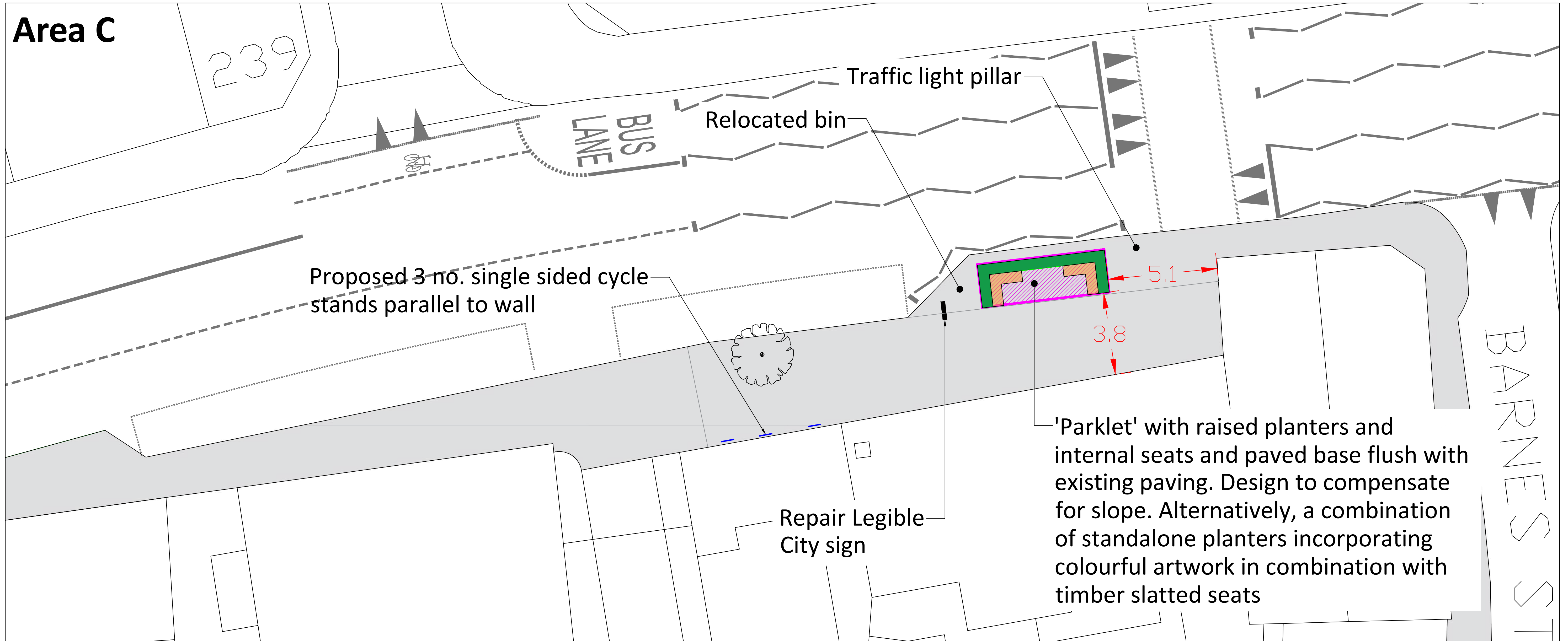


Colourful roadside planting beds in buildouts and along wider sections of street create space sustainable, long term planting along the street. Plant species will be carefully chosen to thrive in each specific site. Plant species will also be chosen for their ecological value

New high quality seating will provide places to rest at key points along the street where the pavements are wide enough

Church Road

Parklets and new paving to the entrance of St George's Park



© Crown Copyright and database right 2023. Ordnance Survey AC0000807971

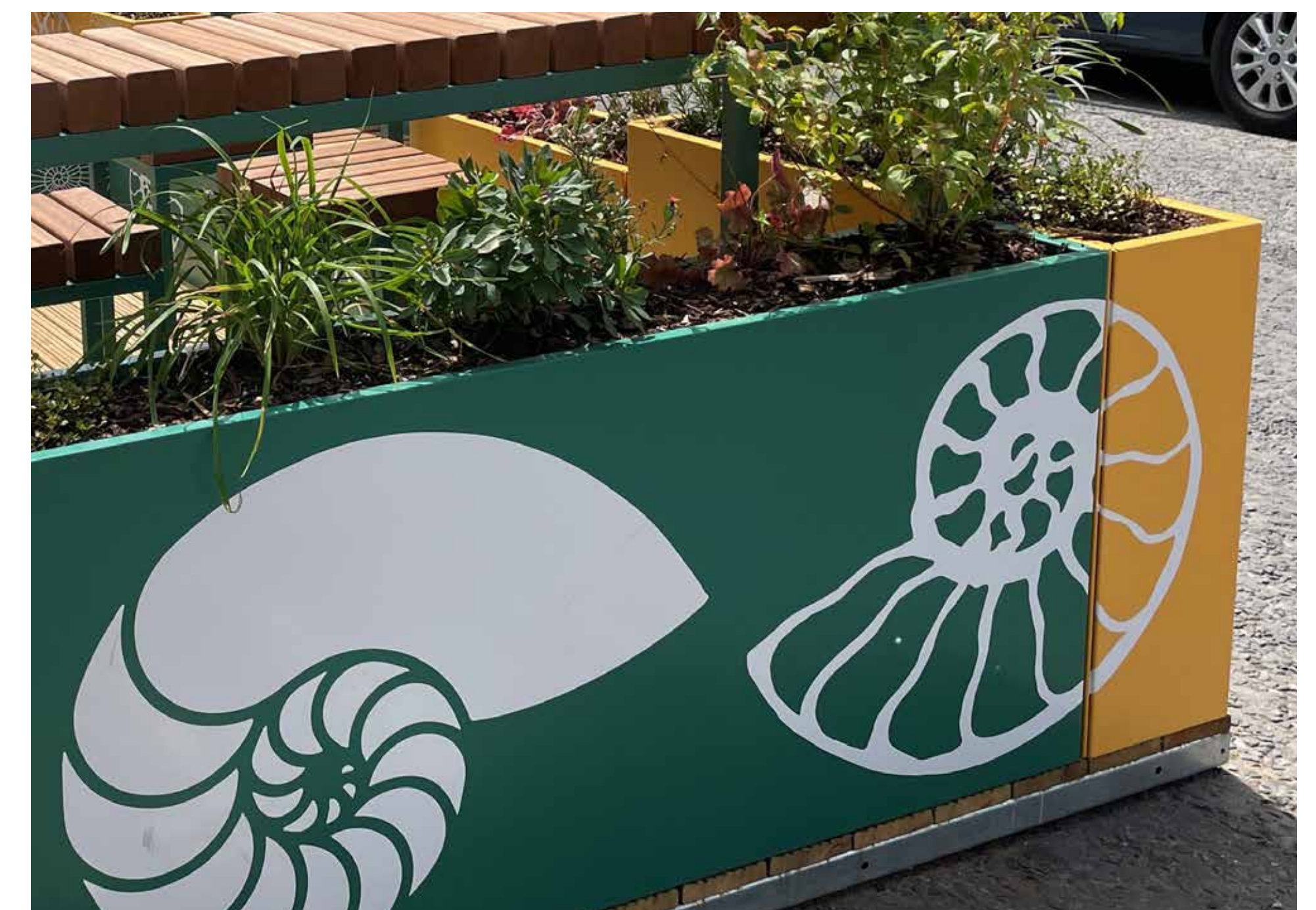
All the pictures are examples from other places, just to give a bit of an idea of how things might look



New high quality pennant stone block paving will replace the existing tarmac at the entrance to St George's Park



The semi-enclosed seating areas will be open on the shops side. They will be designed so that they go straight on the ground without a deck



The parklets or planters will be designed just for this location and incorporate colourful artwork that uses images that have local meaning or connect to work on the shutters