

## Community Development Team Offer

The **Community Development Team** sits within the Neighbourhoods and Communities Service, alongside the **Community Resources** and **Neighbourhood Services** Teams. The team is split North (managed by [Mohammed Elsharif](#)) and South (managed by [Terry Black](#)), with the River Avon forming the divide. Redcliffe falls within the South Team due to the way people access service there.



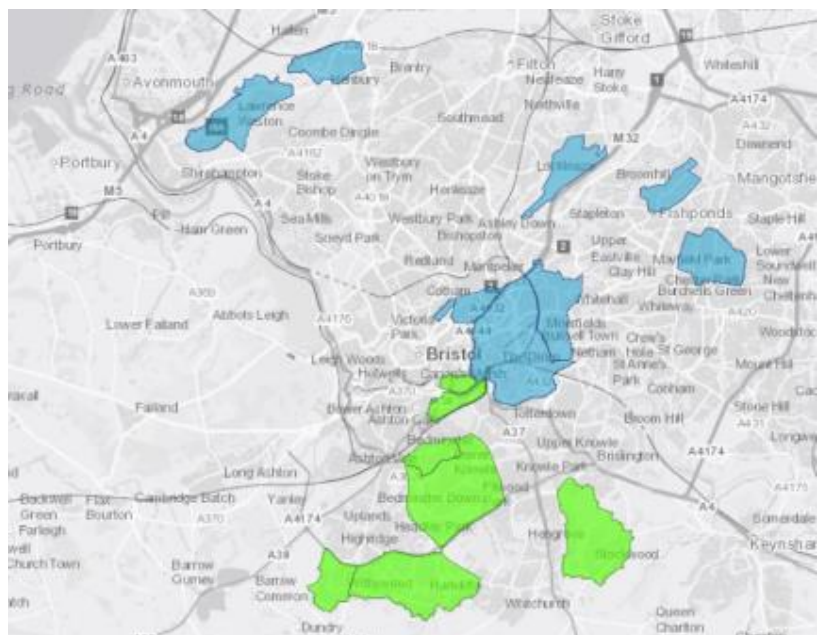
Our team uses Asset Based Community Development (ABCD) and we are working in 12 neighbourhoods across the city.

**North Bristol** – Lawrence Weston, Henbury, St Pauls, Easton, Oldbury Court and Hillfields

We have also been working alongside our colleagues in Parks to support conversations around Stoke Park.

**South Bristol** – Redcliffe, Bedminster (East and South), Knowle West/Filwood, Hartcliffe, Withywood and Stockwood.

<https://bit.ly/2GcfZYK>



This is our community development offer for citizens, voluntary sector partners, local businesses and other Bristol City Council departments working in these neighbourhoods and across the city.

## Our Neighbourhood Offer

- **hold community building conversations** about the changes people would like to make in their neighbourhood alongside their neighbours, enabling people to connect to each other and to the opportunities around them, such as groups, activities and services
- **stimulate conversations about different topics** such as the local economy, young people, poverty and oppression, using participatory tools and creative techniques to tap into people's interests and passions
- **support neighbourly connections**, bringing people together that have similar interests or skills to share
- **grow citizen-led social action**, encouraging people to take action on the things they care about, leading to more social connections, community caring, civic pride and working together
- **focus on including people who are usually excluded**, enabling and encouraging those socially and physically isolated to connect with others and be involved with social action
- **build on other assets** in the community to support citizen-led social action which includes community groups, businesses, voluntary sector organisations, the built environment and local knowledge
- **share the principles, values and tools of our practice** with community members and others working in the area, unlocking capacity so people have the tools to do this for themselves – tools include asset mapping, ABCD practice and Forum Theatre
- **create and encourage new ways of working** between citizens, community groups, businesses, voluntary sector organisations and Bristol City Council departments

## Our City Wide Offer

- **promote equality**, linking grassroots citizen-led social action to city wide equality groups and city wide event such as Black History month to neighbourhood activities
- **connect to a wide range of community development events and networking opportunities**, bringing community-led groups and practitioners together to explore and develop mutual topics (for example Mayor's Conversations, the Faith & Social Action Conference and a year-long celebration of social action in 2020)
- **hold learning circles and reflective practice** with community members, community development practitioners and others who want to deepen their community development practice

- **run community development training**, sharing the tools and skills of community development work and the ABCD approach to citizens, community groups, businesses, voluntary sector organisations and BCC colleagues
- **facilitate cross neighbourhood connections** in order to provide opportunities to share experiences, learning and tools across the city
- **share stories** of people taking social action in their neighbourhood to inspire others, promote awareness and discussion

## **Our Strategic Co-Design Offer**

- **take a whole system approach within two 'Learning Sites'** (St Pauls & Easton and Hartcliffe), working alongside citizens, community groups, businesses, voluntary sector organisations and Bristol City Council departments to co-design and co-produce relevant services and opportunities
- **work with strategic leaders to influence decisions** around resourcing and ways of working with communities
- **work with BCC colleagues, departments and commissioning managers to share learning and knowledge** in order to promote the development of services that meet the needs of the communities of Bristol