



**BRISTOL**  
NATURE RECOVERY



# Bristol City Council Ecological Emergency Action Plan

2026-2028

# Contents

---

Foreword.....	3
Introduction.....	4
Progress since our last plan .....	6
Key project highlights: Case Studies.....	9
Delivering the 2026-2028 action plan .....	15
Our Actions .....	17
Monitoring and Reporting .....	17
Appendix 1 – The actions 2026-2028 .....	18
Appendix 2 – Completed actions .....	36
Glossary.....	42

# Foreword

---

**The majority of people in Bristol, 85% at the last count, are concerned about the loss of wildlife. We share this concern and have ambition to address the ecological emergency.**

This updated Ecological Emergency Action Plan sets out how Bristol City Council (BCC) continues to respond to that concern - by restoring nature, embedding ecological thinking into our services, and working in partnership to deliver long-term change.

We've made meaningful progress since the first plan was published. Pesticide use on council land has dropped by 42% since 2020. We now manage 18% of our land for the benefit of wildlife, moving us closer to the One City goal of 30% by 2030. And we're proud to be working with partners across the West of England on the Local Nature Recovery Toolkit and the development of a regional Wildlife Index—tools that will help us track progress and target action where it's needed most.

This plan also reflects a shift in how we work with communities. Through the new Nature Together project, we're supporting residents and local groups to shape and accelerate nature recovery in their neighbourhoods. We know that access to nature is not equal across the city, and we are committed to making green spaces more welcoming, inclusive and ecologically rich for everyone.

The actions in this plan align with our corporate strategy priority to accelerate climate action and nature recovery. They also reflect our role in the One City approach—contributing to shared goals while delivering on our own responsibilities. Some actions are already underway, and others will take time to realise. But they are all part of a clear direction to restore nature in Bristol and ensure it is part of every decision we make.

Nature recovery cannot be delivered by the council alone. This is our plan, but its success depends on collaboration. By working together, we can create a city where wildlife thrives, communities are connected to nature and ecological recovery is part of how Bristol grows.

Together, we look ahead to 2030 where nature is thriving in Bristol, where people and wildlife coexist and where recovery is rooted in collaboration.



**Councillor Martin Fodor**

# Introduction

**This updated plan sets out Bristol City Council’s ambition to expand and deliver on nature recovery across the city. It outlines the actions we will take in the coming years to address the Ecological Emergency and to help the city of Bristol achieve the goals set out the One City Ecological Emergency Strategy.**

In February 2020, Bristol City Council came together with One City partners to declare an Ecological Emergency in response to the decline in wildlife. Our city’s ecosystems and habitats are vitally important to us all. The loss of biodiversity affects our lives in many ways, from the insects that pollinate our food to the green spaces that enhance our health and wellbeing. In February 2020, the city also adopted the [One City Climate Strategy](#), which identifies specific objectives for the natural environment that help us to adapt to the changing climate.

In September 2020, One City partners agreed the [One City Ecological Strategy](#) as a co-ordinated effort to confront the ecological decline we face and put forward solutions that match the urgency and scale of the issue.

In response to these declarations and strategies Bristol City Council launched its own Ecological Emergency Action Plan and Climate Emergency Action Plans the following year.

A lot has changed since our last plan was published. Since COVID, there’s been an increased awareness of the health benefits of spending time in nature, and a greater public support for efforts to ‘manage for nature’. Bristol City Council has a high commitment to nature in its plans and processes. Nature recovery is a long-term issue for which we are taking steps forward, seeking opportunities, funding, new approaches and technologies, learning from others and building partnerships.

## Purpose

**Action plans like this allow us to share what we are doing so everyone can see:**

- The types of action Bristol City Council is taking to tackle the Ecological Emergency.
- What has been achieved since our last plan and the progress we are making at Bristol City Council.
- The level of our commitment to delivering change today and preparing for tomorrow.
- Our integrated approach to tackling the climate and ecological emergency alongside other city priorities – this creates many benefits for the city at the same time.

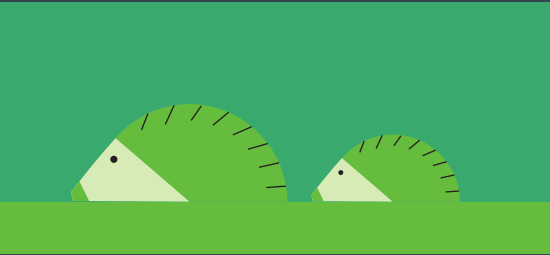





This plan reaffirms our commitment to delivering on the goals of the One City Ecological Emergency Strategy as well as new commitments set out in the [Bristol City Council Corporate Strategy 2025-2030](#) and the work we will continue to do.

We have a corporate priority to accelerate climate action and nature recovery. Our actions for nature recovery concerning the management of land, water and buildings in the city for nature are set out here and our actions on climate change are in the newly updated Bristol City Council Climate Emergency Action Plan.

Many actions from the last plan are continuing and have been updated where needed whilst other actions are newly added this year. A full list of actions can be found in [Appendix 1](#).

## Key One City Ecological Emergency goals:

FAIR • JUST • INCLUSIVE	<b>Space for nature</b> At least 30% of land in Bristol to be managed for the benefit of wildlife by 2030	
	<b>Pesticides</b> Reduce the use of pesticides in Bristol by at least 50% by 2030	
	<b>Pollution</b> 100% of Bristol's waterways to have water quality that supports healthy wildlife by 2030	
	<b>Our wider footprint</b> People and businesses to reduce consumption of products that undermine the health of wildlife and ecosystems around the world	

## Progress since our last plan

**Across England, several major initiatives have been introduced. These include the publication of the 2023 Environment Improvement Plan, and the launch of mandatory Biodiversity Net Gain requirements for new developments. These are complemented by Natural England's Green Infrastructure Standards, all of which build on the Environment Act 2021.**

Regionally, the council worked with neighbouring unitary authorities and the West of England Mayoral Combined Authority to develop and launch the country's first Local Nature Recovery Strategy. The strategy outlines a clear road map and actions we can all take for nature recovery.

Locally, Bristol City Council has published a new Corporate Strategy 2025–2030 which reaffirmed the council's commitment to addressing the Ecological and Climate Emergencies which is supported by the development of a new Local Plan (due for

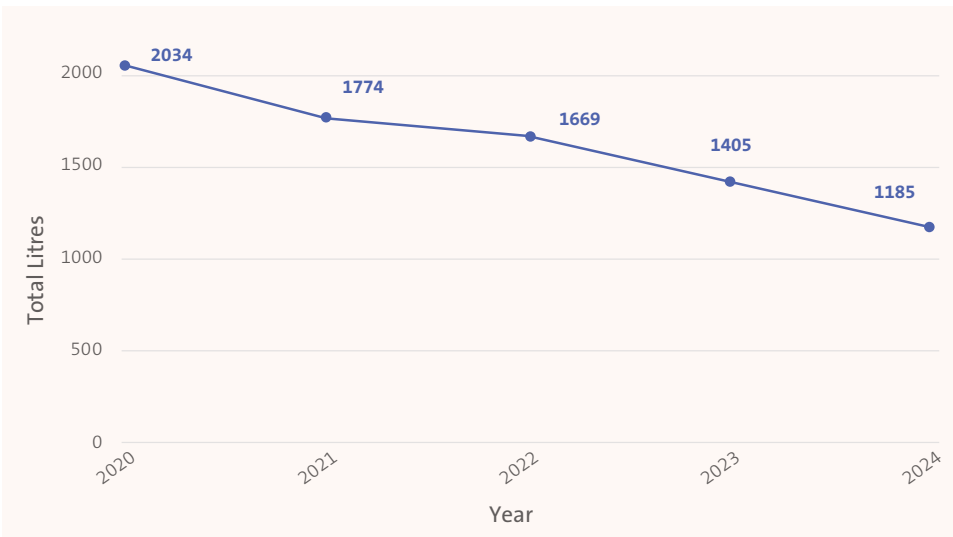
adoption 2026) which introduces a new Urban Green Factor policy and strengthens a range of natural environment policies which protect existing green space and deliver more urban greening. We have further set out our vision for the natural environment in Bristol through the publication of the [BCC Parks and Green Spaces Strategy and Food Growing and Allotment Strategy](#), Bristol Tree and Woodland Strategy and the forthcoming BCC Blue & Green Infrastructure Strategy.



In 2024/25 Communities across the city have produced Climate and Nature Plans which demonstrate their considerable passion and aims for nature in their communities. This work will be developed further through the new Nature Together project that will be delivered by Bristol City Council, Avon Wildlife Trust, Your Park, Natural England and the Bristol Climate and Nature Partnership in partnership with three local communities to develop plans for nature and new ways for communities to take action on nature, on council owned land.

Over the last five years we have taken significant direct action across all areas of the Ecological Emergency with 35% of actions from the 2021–2025 action plan now complete, with the rest continuing to be developed and delivered (a full list is available in [Appendix 2](#)). We have also made progress towards achieving our ecological targets and contributing to goals set out in the One City Ecological Emergency Strategy.

## Since baseline ecological data was captured:



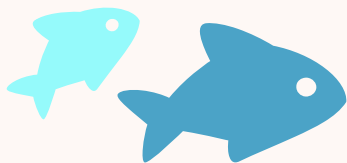
**Figure 1: BCC pesticide use in litres.**

We have reduced the use of pesticides by 42% and have made excellent progress in moving towards our target of 50% reduction by 2030. In November 2025, the council published its first Weed Management Policy which sets out how the council will manage weeds, including how it will minimise the use of glyphosate. This new action plan (which sits within the main Ecological Emergency Action Plan) contains steps that will further help the council’s progress towards this target.

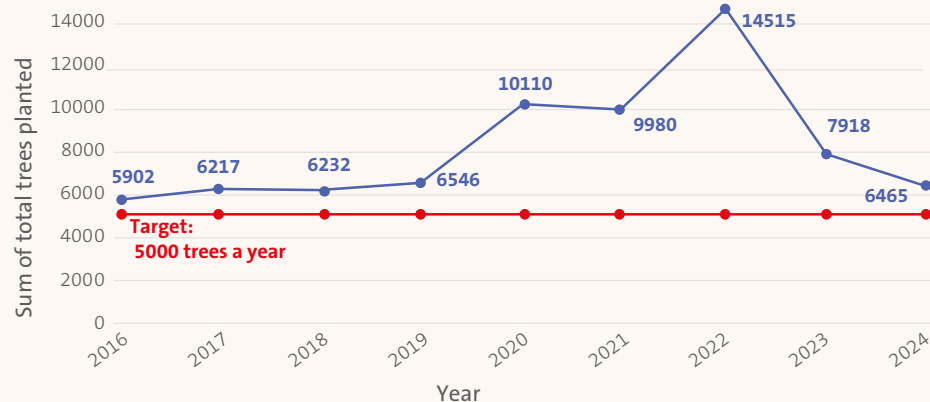


**Figure 2: Hectares of BCC land managed for nature.**

We have added 116 hectares — an area equal to over 162 football pitches — of council land to our Managing for Nature project, since 2022, bringing the total to 878 hectares (17.2%). This initiative (that is still ongoing) involves actively implementing habitat management plans to enhance biodiversity, including on most council-managed Sites of Nature Conservation Interest (SNCIs) and other green spaces.



The Water Framework Directive (which uses data collected by the Environment Agency to measure water quality) scores the ecological health of Bristol’s rivers as moderate, this has remained the same for a number of years. However that doesn’t mean we aren’t taking action for example we have convened a Clean Rivers Working group to collaborate with city partners on action to improve the city’s waterways.



**Figure 3: Number of trees planted by BCC per year.**

We have planted 43,523 trees and contributed to a canopy cover increase of 145 hectares taking to total cover for the city to 18.2%.

The blue line shows the number of trees planted and the red line is the target of 5000 trees per year, which has been exceeded every year since 2016 and has increased since the declaration of the Ecological Emergency. The numbers of trees planted in a given year fluctuates depending on a number of factors including the weather. In 2022, more trees were planted as a result of a post-covid fruit-tree planting scheme, which increased the tree planting for a single season. The number of trees planted each year contributes to overall canopy cover of the city which currently sits at 18.2%. There is a target in the Bristol Tree and Woodland Strategy to increase canopy cover for the city to 20%. The council contributes towards this through its tree planting programme on council land.



**Figure 4: The percentage of Quality of Life Survey respondents who have “Created Space for Nature”.**

There has been a 15% increase (to 68%) of residents reporting that they have created space for nature in the city through the Quality of Life Survey.

This doesn't tell the whole story. The council has had to create new ways of working, secure funding and worked creatively with partners to find ways of delivering projects across the city. This has resulted in some exciting improvements for nature in the city - from greener neighbourhoods and healthier habitats to more opportunities for residents to connect with nature, these projects are helping to make Bristol a more resilient, nature rich city. See Key project highlights ([page 9](#)) for examples of how this work is making a difference.

# Key project highlights: Case Studies

## Hallen Marsh

The Avonmouth Severnside Enterprise Area (ASEA) is joint project by Bristol City Council, South Gloucestershire Council, the West of England Mayoral Combined Authority (WECA) and the Environment Agency. The project has delivered 17km of tidal flood defence at the Severn Estuary. The Severn Estuary is internationally recognised for its importance to overwintering and migratory waterbirds, holding designations as a Ramsar Site, a Special Protection Area (SPA), and a Special Area of Conservation (SAC). As part of the ASEA project, two compensatory habitat sites have been created: Hallen Marsh in Bristol and Aust Reserve in South Gloucestershire.

The completed project now provides 80+ hectares of a mix of grassland, woodland and wetland to provide habitat for Severn Estuary bird species and to continue to provide good habitat for water voles.

Regular bird surveys conducted by the Bristol Ornithological Club help monitor and assess the ecological success of these sites.



## Floating Ecosystems

The initial phase of floating ecosystem habitat was installed in 2024 at Capricorn Quay, during the Festival of Nature. This section is now thriving and well established. Capricorn quay floating habitat is part of wider infrastructure that includes new pontoons for 36 moorings and facilities.

A total of 700 square metres of habitat has now been installed, incorporating over 6000 native plants and 24 trees contributing to rich, diverse habitat. An additional 5580 square metres is planned across 6 locations as part of the Bristol Harbour place shaping strategy, with work scheduled to begin in 2028.

This type of innovative floating habitat creates wetland ecosystem for harbour wildlife. The plant roots provide nursery habitats for fish, while integrated pools provide access for diving birds and otters. It creates a wildlife corridor for invertebrates and pollinators, including butterflies and bees.

To support successful establishment, a maintenance contract with Biomatrix is in place for the initial years. Long-term care is managed by the Harbour Master's office in collaboration with a local volunteer group.



## Managing Space for Nature

Managing for Nature is Bristol City Council’s strategic initiative to enhance the ecological value of parks and green spaces across the city. Rooted in ecological principles, the project seeks not only to protect nature—but to actively support and restore it.

The initiative uses ecological data to guide land management, focusing on habitat creation and connectivity. By improving wildlife and pollinator corridors, it strengthens Bristol’s ecological network and contributes to the broader West of England Nature Recovery Network and Strategy. This includes land managed under active habitat management plans and nature conservation specifications.



In alignment with Bristol’s Ecological Emergency target—to have at least 30% of land managed for wildlife by 2030—the project, funded through the Green Recovery Fund from West of England Combined Authority (WECA), is delivering:

- 40 hectares of improved grassland, maintained with nature-friendly mowing regimes.
- 20 hectares of species-rich meadow, created through hay cuts and yellow rattle sowing.
- Stream restoration along the Malago and Pigeonhouse in South Bristol, in partnership with Bristol Avon Rivers Trust (BART) and local groups.
- Habitat restoration across 10 woodland Sites of Nature Conservation Interest (SNCIs).
- Creation of 5 new wildlife ponds.
- A grazing feasibility study exploring conservation grazing opportunities.



This activity will bring us to 18% land managed for nature.

In 2025 new grass-cutting regimes were introduced in several sites to support meadow health and biodiversity, while maintaining public access and amenity. Read more here: [How we manage our grasslands.](#)

Local communities are central to the success of this initiative. The Parks team work closely with Friends of Groups and key stakeholders. In Oldbury Court, the Parks team, the Friends of Group, Avon Reptile and Amphibian Group (ARAG), Park Work Volunteers, and Avon Wildlife Trust all worked together on pond creation.

Friends of Groups are volunteer-led organisations that champion Bristol’s parks and green spaces. Public input helps shape how nature is managed. Find out more about. [Volunteering in parks.](#)



## One Tree Per Child and TreeBristol

Bristol has several [tree planting programmes](#) that plant and manage trees across parks, streets and verges, schools and other public spaces. One Tree Per Child (OTPC) and [Trees for Streets](#) are initiatives funded through private and corporate sponsorship, planning obligations, grants, and direct support from organisations.

During 2023-24 winter planting season we planted 7,918 trees which contributed to the percentage of Bristol tree canopy cover to 18.2%. Any trees that had to be replaced are not included in the final figure.

In January 2024, OTPC planted our 100,000th tree at Henbury Open Space, a special event was held, attended by 30 children from Blaise Primary School, volunteers, and project partners.

OTPC works with Your Park Bristol and Bath to run volunteer opportunities for tree planting. Volunteering days are essential to the project – they ran 72 sessions in the planting seasons from April 2023 March 2024. The initiative includes educational programming supporting local primary school children to plant care for and learn about trees in their local communities.



## Wildlife Index

In the 2021 plan BCC set out to develop a Bristol Wildlife Index to develop a baseline and track changes towards 2030. This helped pioneer the [regional wildlife index](#) and innovate the approach to understanding the state of nature within the city and region.

The initial steps involved building partnership and working closely with Bristol Regional Environmental Records Centre (BRERC) and the University of Bristol (UoB). Together the boundaries and limitations for a wildlife index were scoped out; this included the limitations of existing data, approaches and resources.

Together it was identified that high-quality biodiversity data is primarily sourced from systematic citizen science initiatives—such as the BTO’s Breeding Birds Survey and Butterfly Conservation’s Big Butterfly Count—as well as from conservation NGOs like the Bat Conservation Trust and People’s Trust for Endangered Species (PTES), and government bodies like DEFRA.

*“The Bristol Wildlife Index work provided an analytical foundation for tracking wildlife abundance at the regional level in an unprecedented way” Rita Brookesmith, Project Manager - Wildlife Index, West of England Combined Authority.*

This work helped build the case for expanding biodiversity monitoring to a regional level, acknowledging that ecological systems operate across landscapes rather than within political boundaries. Through this process, Bristol gathered critical insights into what a regional Wildlife Index would require. These included identifying data gaps—particularly in habitat representation and under-recorded species groups—as well as the need for additional resources such as ecological expertise and citizen science contributions. Existing community networks were recognised both as beneficiaries of the Index and as valuable contributors to its data infrastructure.



## Really Wild Lockleaze - Community Climate and Nature Action Programme

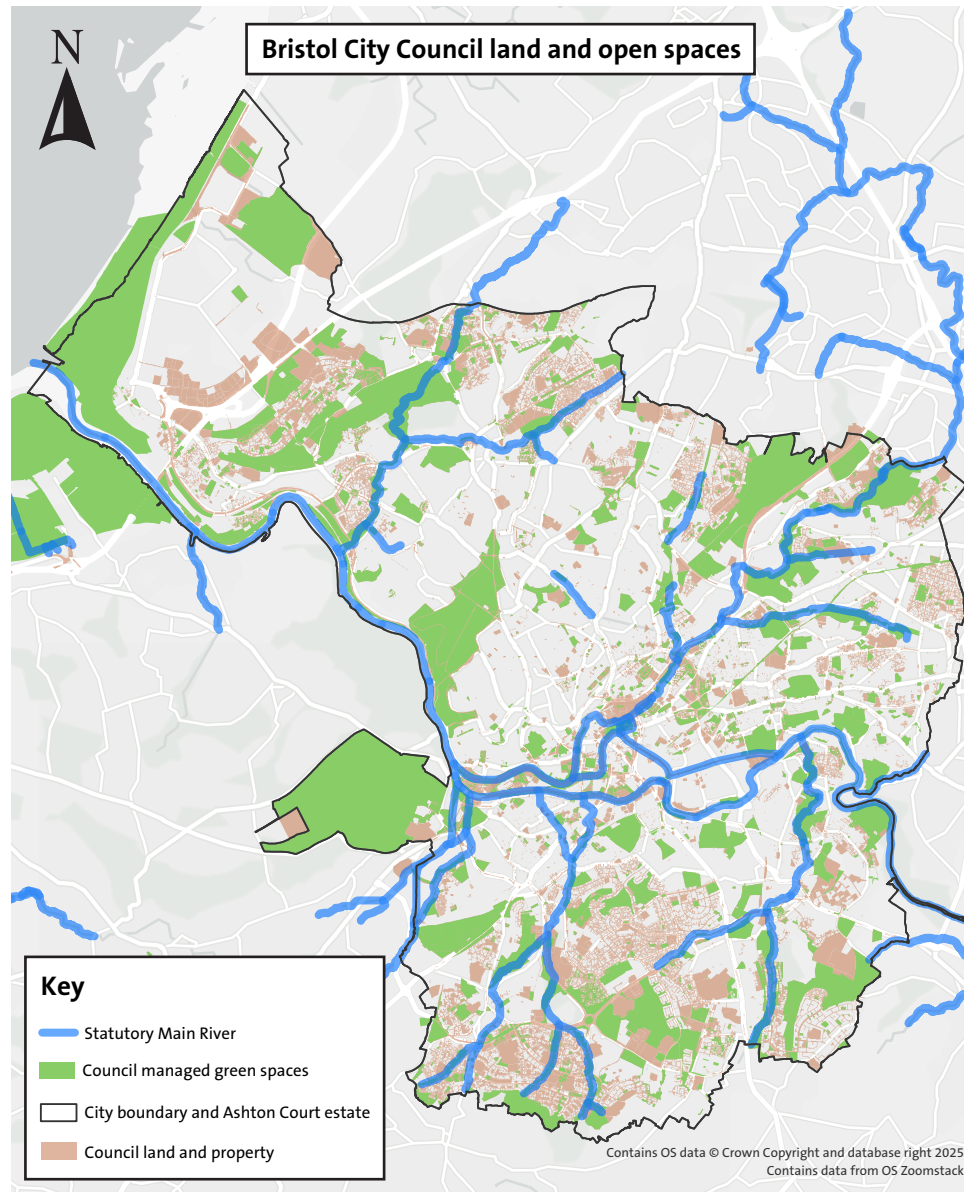
Lockleaze Neighbourhood Trust is a local organisation that participates in the Community Climate and Nature Action Programme (CCNP). CCNP is a key initiative led by the [Bristol Climate and Nature Partnership](#), with active support from Bristol City Council. Designed to empower local communities, CCNP enables residents to co-create and deliver climate and nature-based activities in their neighbourhoods. Through grant funding and collaborative projects, the programme helps remove barriers to grassroots action and supports community-led transformation of local spaces.

Really Wild Lockleaze is the Trust's community-led project transforming their local area for nature. As well as improving neighbourhoods and community connection, they are showcasing the possibilities of what can be done across housing greens, verges and marginal land. Through a collaborative approach with the council and residents the project has created a replicable model for increasing nature on public land. This work demonstrates how council systems can support the community stewardship of soft landscaping.

As a result of this collaboration, we have worked with the group to amend mowing regimes to support wildflower meadows and hedgerows across Lockleaze. Really Wild Lockleaze have planted 1600m<sup>2</sup> of woodland, 2947m<sup>2</sup> of wildlife meadow, 172.5m of hedgerow and created 5 ponds on public spaces. Read more about their work from their [2025 summary report](#).



# Delivering the 2026 - 2028 action plan



**The BCC Corporate Strategy, the One City Plan 2025 and the One City Ecological Emergency Strategy all inform the work that this action plan sets out to accomplish.**

Our Corporate Strategy says we will deliver, enable and advocate for nature action. More specifically we are committed to delivering **Objective 5.3 of the corporate strategy** that says: *Improve the management of land, water and buildings in the city for nature.* As one of the largest landowners and asset managers in Bristol, we are well placed to take a leading role in restoring nature across the city.

The One City Plan 2025 outlines a long-term vision for Bristol in 2050 with collective missions providing a shared focus until 2030: ***“In Bristol, we are collaborating to create a climate resilient city where everyone is empowered to act on climate and nature recovery”.***

The One City Ecological Emergency Strategy is a city-wide document commissioned by the One City Environment Board, that extends beyond the council’s remit. It identifies strategic goals around *space for nature, pesticide use, pollution, and ecological footprint.* While not owned by the council, its themes are embedded in this action plan. Delivering the strategy requires leadership and participation from a wide range of organisations and individuals—this is not a task the council can achieve alone.

This Ecological Emergency Action Plan sets out the activities we will carry out over the coming years to support a more nature-rich and environmentally sustainable Bristol—within the limits of our financial resources. Some actions will be delivered directly by the council, such as installing more floating ecosystems in the harbour. Others will require collaboration, such as the *Resilient Frome* and *Nature Together* projects.

Our Role across the action plan is organised into the following themes:

- Leadership and partnership
- Training
- Evidence
- Space for Nature
- Pesticides
- Water Quality
- Communication & Engagement
- Wider Footprint



The themes enable direct action on how we will improve the management of council-owned green and blue spaces, create new wildlife-friendly habitats, and adopt nature-positive practices across our estate. These actions will help restore biodiversity and enhance the ecological value of land we manage, making Bristol a healthier and more resilient city.

We aim to lead by example. To support this ambition, we are actively seeking and securing funding for both council-led and partnership-based nature recovery projects. This investment is critical to achieving long-term impact and ensuring that nature-based solutions are embedded in the city's future.

Collaboration is essential. We are working with partners across Bristol and the wider region to deliver joined-up nature recovery efforts that bring biodiversity closer to where people live. By connecting habitats and communities, we can create a more inclusive and sustainable urban environment.

Our work on nature recovery is closely aligned with our broader climate commitments. The **Bristol City Council Climate Emergency Action Plan** sets out how we will:

- **Reduce carbon emissions** across our operations and the city.
- **Achieve carbon neutrality** in line with our net zero targets.
- **Build a climate-resilient city** that can adapt to the impacts of climate change.

Together, the Climate Emergency Action Plan and this Ecological Emergency Action Plan support our corporate priorities to **accelerate climate action, restore nature, and create safe, healthy neighbourhoods and affordable, high-quality homes.**

Evidence shows that integrating nature into developments from the outset improves climate resilience, enhances quality of life, and supports urban biodiversity.

## Our Actions

**The Ecological Emergency Action Plan consists of activities that are planned or in progress as part of Bristol City Council's service delivery plans. There are many ongoing operations and services we consider business as usual that are not shown but contribute to protecting and enhancing nature.**

The development of our action plan has been influenced by the challenging context we face as a country, city and local authority. While there are significant challenges on the immediate horizon, we remain ambitious about achieving our vision for a nature positive city where wildlife flourishes alongside people.

Looking further ahead, there is uncertainty about the future of local government funding and public spending as a whole. This means that not all actions contained in this action plan are currently funded or deliverable without additional resource. With this in mind, we have:

- Identified a set of key actions which will deliver the overall vision and commitments of the One City Ecological Emergency Strategy
- Focused most actions on the short-term (1-2 years) with a commitment to review progress after two years to develop actions and our plans further.
- Committed to developing a joined-up approach to managing land and projects to maximise the benefits that can be achieved by working in partnership across the council, city and region.



## Monitoring and Reporting

Action Plan progress will be reported annually, including progress towards quantifiable targets. Headline figures on progress will also be published on the councils Ecological Emergency web page.

This action plan will be reviewed in 2028, at which point there will be an opportunity to review and update the actions that the council will be taking to benefit nature.

# Appendix 1 – The actions 2026-2028

Work Area	High Level Narrative	Ref	Council Action	Funding status	Timescales
<b>Communications and engagement</b>					
Partnership working	Action across the council is delivered with partners, to create additional space, and better management of existing space to benefit nature, at a One City local, landscape level and at a regional scale.	1	<p>Work with our partners to continue refining participatory and creative frameworks to support and develop inclusive and intersectional environmental engagement. Ensuring the legacy of, and building on, work such as Extinction Silences.</p> <ul style="list-style-type: none"> <li>• Develop &amp; deliver the first year of the new 'Towards New Ecologies' project. This work includes strands in staff training, sector engagement and opening the conversation out to visitors and the public.</li> <li>• Draw on this approach to work by developing plans for a new interactive space in our British Wildlife Gallery, opening the process to new external partnerships.</li> </ul>	Funded	2025-2028
Communication and Engagement	Ensure Bristol's Ecological Emergency information is accessible, clearly communicated and understood across the city. An overarching approach for sharing progress, targets and opportunities in ways that strengthen awareness and enable communities to engage with nature recovery.	2	Develop the councils Ecological Emergency communication including updates on plan progress including targets, and links to information to assist ward councillors identify action and opportunities in their communities.	Funded	2025-2028

Work Area	High Level Narrative	Ref	Council Action	Funding status	Timescales
<b>Communications and engagement</b>					
Culture	Ensure Bristol's natural heritage is accessible to encourage learning and awareness of local and global ecological importance. Museum spaces and programmes support diverse access, facilitate research and citizen science.	3	Engage people around the value of nature through the museums programme of displays and events, galleries and educational workshops etc.	Funded	2025-2028
		4	Promotion and access to information and reading relating to the climate and ecological crisis through city libraries and outreach.	Unfunded	2026-2028
<b>Evidence</b>					
Data management & monitoring	Ensure the council has appropriate evidence and data to embed consideration of ecological issues and inform decision making across the organisation. This is essential and needs to be developed in partnership with those who have expertise and who will apply it.	5	<p>Contribute to contemporary climate &amp; ecological research utilising museum collections, data collection, and data sharing.</p> <ul style="list-style-type: none"> <li>Including work contributing collections data to the national DiSSCo UK scheme.</li> <li>Opening the natural sciences research lab in 2025-2026.</li> <li>Data gathering undertaken by our Bristol Regional Environmental Records Centre.</li> </ul>	Funded	2025-2028
		6	Continue to develop mechanisms to capture, share and report our work including gathering data on ecological performance and impacts to inform decision making.	Funded	2025-2028
		7	Identify and carry out additional wildlife monitoring opportunities in Bristol to add greater levels of detail to compliment the regional monitoring programme. E.g. through trial of local plant monitoring schemes.	Funded	2025-2028

Work Area	High Level Narrative	Ref	Council Action	Funding status	Timescales
<b>Evidence</b>					
Data management & monitoring	Ensure the council has appropriate evidence and data to embed consideration of ecological issues and inform decision making across the organisation. This is essential and needs to be developed in partnership with those who have expertise and who will apply it.	8	Complete botanical surveys of rare plants in the Avon Gorge to feed into the Avon Gorge and Downs management plan and identify funding for the protection and management of these rare species.	Funded	2025-2028
		9	Monitor water levels and over wintering bird species at Hallen Marsh to improve site management and improve biodiversity.	Funded	2025-2028
		10	Monitor delivery of Biodiversity Net Gain (BNG) /Urban Greening Factor through capital projects using the Capital Projects Sustainability Tracker.	Funded	2025-2028
Share data	Data collection, sharing and interpretation are essential for engagement in nature recovery and demonstrating change through reporting. Data should be accessible to a wide audience.	11	Work with city partners and community groups to develop and publish a Bristol Ecological Network Map that builds on the WoE Local Nature Recovery Strategy	Unfunded	2025-2028
Partnership working	Action across the council is delivered with partners, to create additional space, and better management of existing space to benefit nature, at a One City local, landscape level and at a regional scale.	12	Work with regional partners to support the establishment of the Regional Monitoring programmes. This includes the West of England Wildlife Index, 30x30 monitoring and annual State of Nature Report. Identify the best platforms and channels for sharing this data with stakeholders.	Funded	2025-2028

Work Area	High Level Narrative	Ref	Council Action	Funding status	Timescales
<b>Leadership and Partnership</b>					
Partnership working	Action across the council is delivered with partners, to create additional space, and better management of existing space to benefit nature, at a One City local, landscape level and at a regional scale.	13	Engage with European networks and cities to share knowledge and best practice that is beneficial to Bristol's nature and demonstrates the councils leadership.	Funded	2025-2028
		14	Continue working with local and regional partners to coordinate nature recovery projects, secure funding, and deliver key strategies such as the Local Nature Recovery Strategy and Bristol Avon Catchment Plan.	Funded	2025-2028
		15	Work with partners and communities to support the delivery of the Community Climate and Nature Plans across the city.	Funded	2025-2028
<b>Space for Nature</b>					
Funding	Action needs to be taken across the council and with partners, to create additional space, and better management of existing space to benefit nature, at local, landscape and regional scale. To facilitate this funding is required to support action for the long-term	16	Develop a pipeline of fundable projects and business cases that will help the council to achieve it Managing Space for Nature aspirations and deliver on the Local Nature Recovery Strategy	Unfunded	2026-2028
		17	Trial Natural England Biodiversity Token scheme in Bristol	Unfunded	2026-2028

Work Area	High Level Narrative	Ref	Council Action	Funding status	Timescales
<b>Space for Nature</b>					
Biodiversity Net Gain	Biodiversity Net Gain is an Environment Act requirement that requires the council to ensure Development delivers at least 10% net gain for biodiversity. Work across council departments to ensure delivery of net gain is maximised in within the Bristol boundary.	18	Establish procedure for delivering Biodiversity Net Gain uplift on land managed by Bristol City Council.	Funded	2025-2026
		19	Commission a report to identify suitable reptile receptor sites on Council owned sites and non council owned sites. Report to be undertaken with other landowners including Network Railway and Highways England.	Unfunded	2026-2027
		20	Submit first Biodiversity Duty Report March 2026 and ensure process in place to gather evidence and comply with future reporting cycles.	Funded	2025-2026
Partnership working	Action across the council is delivered with partners, to create additional space, and better management of existing space to benefit nature, at a One City local, landscape level and at a regional scale.	21	Promote cross council collaboration through the creation of a 'Natural Environment Impact review forum' that meets quarterly to raise awareness of strategic planning, master planning and projects that will impact the natural environment through habitat and tree loss. Explore opportunities for co-delivery and problem solving.	Unfunded	2026-2027

Work Area	High Level Narrative	Ref	Council Action	Funding status	Timescales
<b>Space for Nature</b>					
Communication and Engagement	Ensure Bristol's Ecological Emergency information is accessible, clearly communicated and understood across the city. An overarching approach for sharing progress, targets and opportunities in ways that strengthen awareness and enable communities to engage with nature recovery.	22	<p>Support the delivery of the council's 'Nature Together' project to make it easier for residents to take for action for nature.</p> <ul style="list-style-type: none"> <li>• Develop 'one front door' or green permitting scheme</li> <li>• Review availability of unused land and process for granting meanwhile uses to communities</li> <li>• Support community action on nature through the development and testing of emerging local and regional funding opportunities e.g. combined authority's nature funding platform.</li> </ul>	Funded	2026-2028
Share data	Data collection, sharing and interpretation are essential for engagement in nature recovery and demonstrating change through reporting. Data should be accessible to a wide audience.	23	Carry out land use assessment and opportunity mapping of the parks estate to create a plan that balances competing needs between food growing, recreation, managing for nature and tree planting.	Unfunded	2026-2028
Nature Recovery	Recognising the contribution individual sites and locations (blue and green) make to the existing ecological network will support the delivery of the Local Nature Recovery Strategy and enhance the delivery of wider benefits for wildlife, people and place.	24	Develop business case in partnership with the Parks and Highways teams for changes in verge management to deliver a more biodiverse approach to highways maintenance. Includes research of how a more natural approach has been implemented in other cities e.g. Leeds and Sheffield	Unfunded	2026-2028

Work Area	High Level Narrative	Ref	Council Action	Funding status	Timescales
<b>Space for Nature</b>					
Nature Recovery	Recognising the contribution individual sites and locations (blue and green) make to the existing ecological network will support the delivery of the Local Nature Recovery Strategy and enhance the delivery of wider benefits for wildlife, people and place.	25	<p>Deliver Managing for Nature Green Recovery Fund project to October 2026 to increase BCC M4N land from 15% to 18.6%.</p> <ul style="list-style-type: none"> <li>Bring all BCC Sites of Nature Conservation Interest (SNCI) into active management, including updating or creating management plans, to contribute to the council's '30 x 30' targets, including woodland management plans.</li> <li>Trial new nature positive grass cutting regimes</li> </ul>	Funded to 2026	2025-2027
		26	Identify, implement and monitor ecological enhancements, including delivery of Biodiversity Net Gain and Urban Green Factor, as part of the Bristol City Council Housing Delivery Programme and Goram Homes developments; aspiring to achieve Building with Nature standard where feasible.	Unfunded	2025-2028
		27a	Identify, implement and monitor ecological enhancements, including delivery of Biodiversity Net Gain and Urban Green Factor, in new transport projects.	Funded	2025-2028
		27b	Identify, implement and monitor ecological enhancements, including delivery of Biodiversity Net Gain and Urban Green Factor, in new capital and corporate projects.	Unfunded	2025-2028

Work Area	High Level Narrative	Ref	Council Action	Funding status	Timescales
<b>Space for Nature</b>					
Nature Recovery	Recognising the contribution individual sites and locations (blue and green) make to the existing ecological network will support the delivery of the Local Nature Recovery Strategy and enhance the delivery of wider benefits for wildlife, people and place.	27c	Identify, implement and monitor ecological enhancements, including delivery of Biodiversity Net Gain and Urban Green Factor, in new highways projects.	Unfunded	2025-2028
		28	Identify additional locations (beyond what is included in the Managing for Nature - M4N - Plan) for habitat creation and enhancement as part of Bristol Local Ecological Network that contributes to the West of England Local Nature Recovery Strategy, green infrastructure functions, and Biodiversity Net Gain offsetting.	Unfunded	2025-2028
		29	Identify opportunities for ecological enhancements on council buildings/ facilities and land not currently managed for nature.	Unfunded	2025-2028
		30	Publish council's Managing for Nature Plan, which includes detailed plans for how the council can achieve its 30 x 30 target.	Funded	2026-2027
		31	Based on learnings from Green Recovery funded Managing for Nature project and the BCC Managing or Nature Plan change operational management of parks, green spaces and amenity areas to benefit nature, where appropriate, and contribute to the councils 30% of land managed for nature by 2030 target.	Unfunded	2027-2028

Work Area	High Level Narrative	Ref	Council Action	Funding status	Timescales
<b>Space for Nature</b>					
Nature Recovery	Recognising the contribution individual sites and locations (blue and green) make to the existing ecological network will support the delivery of the Local Nature Recovery Strategy and enhance the delivery of wider benefits for wildlife, people and place.	32	Install grazing infrastructure at Hallen Marsh to enable conservation grazing of the site	Funded	2025-2027
		33	Work with the Avon George and Downs wildlife project steering group to finalise the Avon Gorge and Downs management plan and identify funding for delivery.	Funded	2025-2028
		34	Identify opportunities and funding to expand conservation grazing across the city including review the Avon Gorge Countryside Stewardship Agreement	Unfunded	2025-2028
		35	Complete the dimmable lighting project by: <ul style="list-style-type: none"> <li>Introducing dimmable lighting into parks</li> <li>Creating a plan to ensure the effective use of lighting across the city to support the expansion of dark corridors to support more nocturnal wildlife while keeping parks and city walkways safe.</li> </ul>	Unfunded	2026-2028
Trees and Woodlands	Trees and Woodland deliver significant benefit to nature, people and place. They are a key element of the ecological network and green infrastructure. Managing existing trees and woodlands, and delivering on the significant targets set by government and the West of England Nature Recovery Strategy, requires partnership work and investment.	36	Work with regional partners to develop and deliver the Western Forest Plan as part of Western Forest Project. In doing so identify deliverables that will contribute to the councils canopy targets.	Funded	2026-2027
		37	Deliver the One Tree per Child tree planting programme to plant 5,000 tree per year (based on one tree for each child starting school in Bristol per year).	Funded	2025-2028

Work Area	High Level Narrative	Ref	Council Action	Funding status	Timescales
<b>Space for Nature</b>					
Trees and Woodlands	Trees and Woodland deliver significant benefit to nature, people and place. They are a key element of the ecological network and green infrastructure. Managing existing trees and woodlands, and delivering on the significant targets set by government and the West of England Nature Recovery Strategy, requires partnership work and investment.	38	Via 'Highway Landscapes and Tree Planting' programme remove high risk ash trees subject to ash dieback and deliver a canopy recovery programme that increases tree canopy by replacing non-woodland ash trees (20 hectares) and planting new trees on highway grass verges (10 hectares), by 2028 [woodlands to recovery canopy lost to ash dieback through natural regeneration and in-growth. Canopy contributions are projected].	Funded	2025-2028
		39	Increase tree canopy across parks and green spaces land by 5 hectares per year (canopy projected) - see Parks and Green Spaces Strategy [additional target to Highway Landscapes and Tree Planting project which commits to maintain tree canopy in non-woodland council maintained green space]. Target limited by availability of land.	Funded	2025-2028

Work Area	High Level Narrative	Ref	Council Action	Funding status	Timescales
<b>Space for Nature</b>					
Blue and Green Infrastructure / planning	Connected quality green and blue space is key to creating networks where nature can thrive. Urban regeneration that includes this delivers development benefits for wildlife and people. The Bristol Green Infrastructure Strategy together with other strategies and plans, new and revised policies including the Liveable Neighbourhoods policy, will enable planning and management of green infrastructure that is crucial to sustainable healthy living.	40	Incorporate biodiversity and green infrastructure considerations and new national SuDS guidance into the update of the local plan having regard to national planning policy.	Funded	2025-2028
		41	Ensure effective implementation of relevant policies (particularly BG1, BG2, BG3 and BG4) within the development management process.	Funded	2026-2028
		42	Appropriately assess and value the multi-functional benefits of existing mature street trees in the design of capital projects. For all high value trees, seek high quality designs that avoid unnecessary tree felling. (linked to actions 27a, 27b and 27c).	Funded	2026-2028
		43	Take action to strengthen cross-council data and governance processes for urban trees, to ensure progress towards our city-wide canopy cover target.	Funded	2026-2028
<b>Training</b>					
Ecological Emergency literacy	All council staff and members should have sufficient knowledge and skills on the ecological emergency to embed into their work and ensure nature-based evidence is used within decision making across the council.	44	Identify training needs for teams and councillors related to the ecological emergency and where practical develop in-house training or information sessions.	Funded	2025-2028
		45	Deliver Biodiversity Collage initiative to staff teams and monitor uptake.	Funded	2025-2028

Work Area	High Level Narrative	Ref	Council Action	Funding status	Timescales
<b>Water Quality</b>					
Share data	Data collection, sharing and interpretation are essential for engagement in nature recovery and demonstrating change through reporting. Data should be accessible to a wide audience.	46	Work in partnership with the Bristol Avon Catchment Partnership to develop and trial River Health Score Cards for measuring and monitoring river quality in the region.	Funded	2025-2027
Blue and Green Infrastructure	Connected quality green and blue space is key to creating networks where nature can thrive. Urban regeneration that includes this delivers development benefits for wildlife and people. The Bristol Green Infrastructure Strategy together with other strategies and plans, new and revised policies including the Liveable Neighbourhoods policy, will enable planning and management of green infrastructure that is crucial to sustainable healthy living.	47	<p>Continue delivery of the Resilient Frome Project:</p> <ul style="list-style-type: none"> <li>• Work with schools to deliver SuDS at Chipping Sodbury by March 27;</li> <li>• Complete procurement process to be able to retrofit SuDS at Briarwood and Glen Frome schools by March 27.</li> <li>• Engage with landowners at Rose Hill Industrial site to see if we can retrofit any SuDS within the estate there by March 27.</li> <li>• Work with BCC/SGC to identify further retrofit SuDS projects to concept design stage to help support a pipeline of projects by March 27</li> </ul>	Funded	2025-2027
		48	<p>Progress river restoration projects to provide recreational and ecological benefit, current projects include:</p> <ul style="list-style-type: none"> <li>• Resilient Frome Project</li> <li>• Bedminster River Restoration Project</li> <li>• South Bristol river restoration as part of BCC Managing for Nature Project</li> </ul>	Partially funded	2025-2028

Work Area	High Level Narrative	Ref	Council Action	Funding status	Timescales
<b>Water Quality</b>					
Blue and Green Infrastructure	Connected quality green and blue space is key to creating networks where nature can thrive. Urban regeneration that includes this delivers development benefits for wildlife and people. The Bristol Green Infrastructure Strategy together with other strategies and plans, new and revised policies including the Liveable Neighbourhoods policy, will enable planning and management of green infrastructure that is crucial to sustainable healthy living.	49	Continuously improve processes to drive high quality SuDS. Co-ordinate between technical teams to upscale SuDS assets in the public realm. Work with developers for improved SuDS delivery, and engage with other local authorities on best practise for achieving high quality SuDS across the built environment.	Unfunded	2026-2028
		50	Strengthen the Council's compliance and enforcement processes to ensure silt run-off is adequately managed from development. Issue standing advice within the planning process on ensuring effective silt management through correct drafting and implementation of construction environmental management plans (CEMP)s.	Funded	2026-2028
Funding/Blue and Green Infrastructure	Action needs to be taken across the council and with partners, to create additional space, and better management of existing space to benefit nature, at local, landscape and regional scale. To facilitate this funding is required to support action for the long-term	51	Explore funding and delivery mechanisms for the delivery of policy GIA: Open space for recreation within regeneration and development management processes.	Unfunded	2026-2028
		52	Deliver ecological enhancements as part of the Harbour Place Shaping Strategy (HPSS) including securing funding to deliver an additional 5500sqm of floating ecosystems in the floating harbour.	Unfunded	2026-2028

Work Area	High Level Narrative	Ref	Council Action	Funding status	Timescales
<b>Water Quality</b>					
Partnership working	Action across the council is delivered with partners, to create additional space, and better management of existing space to benefit nature, at a One City local, landscape level and at a regional scale.	53	Work in partnership with the Bristol Avon Catchment Partnership to identify and develop measures to improve the ecological health of rivers within Bristol and across the wider catchment.	Funded	2025-2028
		54	Convene One City Clean Rivers Working Group (in response to the Clean Rivers council motion) to agree Clean Rivers action plan for the city. Work with city partners to identify funds and opportunities to deliver the clean rivers action plan for the city.	Funded	2025-2028
		55	Support the Devon & Severn Inshore Fisheries Authority to sustainably manage fisheries and protect estuarine habitats in the Severn Estuary.	Funded	2025-2028
<b>Wider Footprint</b>					
Culture	Bristol City Council culture work operates in a environmentally friendly way whereby film and TV production causes minimum harm and promotes equality, uses resources sustainably and supports healthy ecosystems beyond Bristol.	56	Review practice, policy and guidance regarding events and engage wider arts and cultural sector to develop an environmentally friendly events programme that minimises impact on the environment and wildlife.	Funded	2025-2028
		57	Maintain a 'wellbeing woodland' and established green landscaped premises at TBY2 (Bottle Yard's expansion site) for the benefit of nature and people. To include bird and bat boxes.	Funded	2025-2028

Work Area	High Level Narrative	Ref	Council Action	Funding status	Timescales
<b>Wider Footprint</b>					
Culture	Bristol City Council culture work operates in a environmentally friendly way whereby film and TV production causes minimum harm and promotes equality, uses resources sustainably and supports healthy ecosystems beyond Bristol.	58	Use The Bottle Yard Studios & Bristol Film Office Sustainability Strategy & Action Plan, along with funded impact/evaluation studies, to monitor the impact of the studios and local film/TV production on natural ecosystems and promote ways to support ecological sustainability. Including monitor how many street productions are signed up to the principles of ALBERT.	Part funded	2025-2028
		59	Maintain an established Green Team at The Bottle Yard/Bristol Film Office. Promote training and guidance for Bottle Yard staff and contractors to deliver environmentally sustainable productions. Embed ecological and climate themes throughout industry facing skills programme; All Set West.	Funded	2025-2028
Procurement	Supplies of work, goods and service must operate in a way which promotes equality, uses resources sustainably and supports healthy ecosystems beyond Bristol.	60	Propose new social value measure under the theme of sustainability in order to direct funding to nature projects.	Funded	2025-2027

Work Area	High Level Narrative	Ref	Council Action	Funding status	Timescales
<b>Wider Footprint</b>					
Culture	Ensure Bristol's natural heritage is accessible to encourage learning and awareness of local and global ecological importance. Museum spaces and programmes support diverse access, facilitate research and citizen science.	61	<p>Continuously work to increase our operational sustainability processes and procedures.</p> <ul style="list-style-type: none"> <li>Review our Environmental Policy and Action Plan.</li> <li>Improve how the museums environmental working group connects across teams, to share best practise in reducing operational impact and ensuring the working group has oversight across the organisation.</li> </ul>	Funded	2025-2028
Culture and Sport	Support the sustainable management of Bristol's playing pitches by working with national governing bodies, facility operators, and providers. Investment in sports facilities prioritises equitable access, encourages participation across all ages and backgrounds, and strengthens connections between people and Bristol's natural environment.	62	Work with national governing bodies, pitch providers, and operators to promote the construction and maintenance of playing pitches that meet governing body standards and minimises their impact on the local environment. Encourage partners to explore and pilot sustainable alternatives to artificial infills, and adopt effective measures to minimise rubber crumb infill loss and pollution—such as containment barriers, kickboards, cleaning units and appropriate maintenance regimes. Work with providers to ensure minimised light spill.	Funded	2027-2028
Nature Recovery	Recognising the contribution individual sites and locations (blue and green) make to the existing ecological network will support the delivery of the Local Nature Recovery Strategy and enhance the delivery of wider benefits for wildlife, people and place.	63	New BCC freehold property leases to protect/ manage council natural environment interests.	Unfunded	2025-2028

Work Area	High Level Narrative	Ref	Council Action	Funding status	Timescales
<b>Pesticides</b>					
Data management & monitoring	Ensure the council has appropriate evidence and data to embed consideration of ecological issues and inform decision making across the organisation. This is essential and needs to be developed in partnership with those who have expertise and who will apply it.	64	Identify gaps in data on pesticide use and ways that may be collected that will contribute to the implementation of this policy.	Funded	2025-2028
Research	Research to support innovation, guide best practice, and enable transparent reporting on progress. Insights must be accessible to communities, partners and decision-makers to encourage wider engagement in nature recovery.	65	Research alternatives (including learning from work carried out by other Local Authorities) to pesticides, identifying the benefits and cost of each.	Funded	2025-2028
Control Methods	The approaches, principles and standards used to manage weeds in ways that support ecological recovery.	66	Trial credible alternatives to glyphosate that may result in the reduction of future pesticide use, as appropriate and where funding permits.	Unfunded	2026-2028
		67	Conduct trial of pesticide opt-out and community weeding scheme followed by a review of findings. If successful identifying for scaling up.	Funded	2025-2028

Work Area	High Level Narrative	Ref	Council Action	Funding status	Timescales
Pesticide management	The principles, expectations and governance that shape how pesticides are understood, recorded and overseen within the council. Strategic context for how pesticide use is considered, monitored and evaluated in relation to ecological recovery, public expectations and regulatory responsibilities. It defines the overall approach that supports a long-term shift toward reduced reliance on chemical inputs.	68	Explore options for a more tailored approach to pesticide use (including pesticide free zones and the use of targeted application) across the council's estate, differentiating between types of receptor sites (highways, cemeteries and parks etc) and locations in the city. Test, trial and report on any suitable and economic options.	Funded	2025-2028
		69	If funding is available trial the use of Community Payback to manually remove weeds on the adopted highway in key locations.	Unfunded	2025-2028

## Appendix 2 – Completed actions

To date 27 actions from the 2021 – 2025 action plan have been completed

Theme	Ref	Work Area	High Level Narrative for BCC Action Plan	BCC Activity
Leadership	<b>A.3</b>	Biodiversity Net Gain	To address the ecological issues alongside social, economic and environmental issues requires joined up and ambitious policy, guidance and funding. Working in partnership to promote high standards and leading by example on our asset programmes and development projects	Endorsement of ‘Chartered Institute of Ecology and Environment Management, Biodiversity Net Gain Good Principles for Development’ for council projects
	<b>A.4</b>			Endorsement of an organisational framework and action plan approach to Biodiversity Net Gain (BNG) implementation
Evidence	<b>D.3</b>	Data management/ monitoring	To make sure the council has appropriate evidence and data to embed consideration of ecological issues and inform decision making across the organisation. This is essential and needs to be developed in partnership with those who have expertise and who will apply it.	Work with partners to establish a West of England shared and managed data platform for sharing West of England data. This is to be kept updated, reviewed and used for monitoring progress. To obtain mapping/data necessary to respond to new regulations and requirements.

Theme	Ref	Work Area	High Level Narrative for BCC Action Plan	BCC Activity
Space for Nature	<b>E.10</b>	Food growing	Increase in local food growing that is managed for wildlife, as part of effective green infrastructure, maintains soil quality and provides habitat for a wider range of species including pollinators that are essential to human life.	Commission study into upscaling of nature friendly food growing linking with allotments, small holdings, parks and green spaces.
	<b>E.11</b>			Review Allotment Strategy to recognise their importance for wildlife (good habitats for reptiles and pollinators) and promote opportunities for addressing ecological emergency.
	<b>E.12</b>			Investigate evidence need and options to establish nature friendly Local Plan policies for food systems and supporting practice guidance.
	<b>E.15</b>	Blue & Green Infrastructure	Connectivity and quality of green and blue space is key to creating networks where nature can thrive and supports the creation of development and urban regeneration that delivers benefits for wildlife and people. The Bristol Green Infrastructure Strategy together with other strategies and plans, new and revised policies including the Liveable Neighbourhoods policy, will enable planning and management of green infrastructure that is crucial to sustainable healthy living.	Ensure Green Infrastructure principles are reflected within wider local plan policies including transport and housing.

Theme	Ref	Work Area	High Level Narrative for BCC Action Plan	BCC Activity
Space for Nature	<b>E.16</b>	Blue & Green Infrastructure	Connectivity and quality of green and blue space is key to creating networks where nature can thrive and supports the creation of development and urban regeneration that delivers benefits for wildlife and people. The Bristol Green Infrastructure Strategy together with other strategies and plans, new and revised policies including the Liveable Neighbourhoods policy, will enable planning and management of green infrastructure that is crucial to sustainable healthy living.	Contribute officer time to NE National GI Standards Framework WoE Pilot Nov 2020 - Feb 2021 and beyond to further test and pilot WoE JGIS, National GI Standards, Biodiversity Net Gain metric, Building with Nature.
	<b>E.18</b>			Apply Building with Nature into construction briefs for new development at Knowle West Health Park site and New Fosseway site.
	<b>E.2</b>	Funding	Action needs to be taken across the council and with partners, to create additional space, and better management of existing space to benefit nature, at local, landscape and regional scale.	Support action by citizens – EE in Community Grants Scheme (2021 launch)
	<b>E.20</b>	Blue & Green Infrastructure	Connectivity and quality of green and blue space is key to creating networks where nature can thrive and supports the creation of development and urban regeneration that delivers benefits for wildlife and people. The Bristol Green Infrastructure Strategy together with other strategies and plans, new and revised policies including the Liveable Neighbourhoods policy, will enable planning and management of green infrastructure that is crucial to sustainable healthy living.	Embed Natural Streets/ Green Grid, Grey to Green and blue/green corridor approaches within highways, transport, flood risk plans, policies and strategies. Specifically the forthcoming revision to the Local Flood Risk Management Strategy

Theme	Ref	Work Area	High Level Narrative for BCC Action Plan	BCC Activity
Space for Nature	<b>E.22</b>	Biodiversity Net Gain	Biodiversity Net Gain is to become Environment Act requirement that will require the council to update planning policies and practice guidance to ensure delivery at least 10% net gain for biodiversity.	Existing Local Plan - prepare Biodiversity Net Gain practice guidance to support local plan and national planning policy requirements in response to Environment Act.
	<b>E.23</b>			Update Local Plan to include new policy approach to Biodiversity Net Gain and update green infrastructure policy accordingly.
	<b>E.24</b>			Commission survey of BCC Sites of Nature Conservation Interest (SNCI) to inform evidence for ecological network and Biodiversity Net Gain work.
	<b>E.27</b>			Check/ update DM17 Bristol Tree Replacement Standard ensuring clarity alongside any new Biodiversity Net Gain policy/legislation
	<b>E.3</b>	Funding	Action needs to be taken across the council and with partners, to create additional space, and better management of existing space to benefit nature, at local, landscape and regional scale.	Use Bristol Future Parks to invite support and investment to progress nature recovery projects
	<b>E.35</b>	Nature Recovery Network	Recognising the contribution individual sites and locations (blue and green) make to the existing ecological network will support the delivery of the Nature Recovery Network and enhance the delivery of wider benefits for wildlife, people and place.	Renew the Parks and Green Space Strategy, setting out policies, principles and actions for nature-rich parks and green spaces. Include principles that support nature projects in parks and reference to Biodiversity Net Gain off-setting principles/opportunities

Theme	Ref	Work Area	High Level Narrative for BCC Action Plan	BCC Activity
Space for Nature	<b>E.41</b>	Trees and Woodlands	Trees and Woodland deliver significant benefit to nature, people and place. They are a key element of the ecological network and green infrastructure. Managing existing trees and woodlands and also delivering on the significant targets set by government and the West of England (WoE) Nature Recovery Strategy requires strategy, partnership work and investment.	Input and endorse a renewed 'Forest of Avon Plan': a tree and woodland strategy for the West of England'
	<b>E.42</b>			Develop a council tree and woodland strategy integral to the Bristol Blue-Green Infrastructure Strategy
	<b>E.43</b>			Establish city approach to ash dieback and other plant diseases
	<b>E.7</b>	Partnership delivery	Action needs to be taken across the council and with partners, to create additional space, and better management of existing space to benefit nature, at local, landscape and regional scale.	Commit to Avonmouth Severnside Enterprise Area (ASEA) ecology mitigation and flood defence project. This exemplar scheme has potential to assist shaping other schemes delivery of nature recovery.
Water quality	<b>G.2</b>	Blue & Green infrastructure	To improve water quality and the habitat of the water environment is key aspect of the ecological network and nature recovery. This can be achieved by using mechanisms such as Sustainable urban Drainage Systems (SuDS) and through design of flood defence schemes. By working together with established water focused partnerships we can maximise the significant benefits for wildlife.	Flood Risk - Embed biodiversity planning and Nature Based Solutions within Local Flood Risk Management Strategy work.
				Flood Risk - Embed biodiversity planning and Nature Based Solutions within Local Flood Risk Management Strategy work.
	<b>G.4</b>			Flood Risk - Embed multi-benefit SuDS approach in the Strategic Flood Risk Assessment

Theme	Ref	Work Area	High Level Narrative for BCC Action Plan	BCC Activity
Communication and engagement	<b>H.2</b>	Share data	Communication and engagement To collect, share and interpret data to ensure it is accessible to a wide audience is crucial to engaging others in nature recovery management and reporting change	Work closely with Bristol Museums to share taxonomic, data management expertise, to deposit or access voucher specimens and to establish a stronger historical base on which to assess change.
	<b>H.8</b>	Communication & Engagement	To communicate the value of nature by working in partnership, sharing information and best practice. This will encourage others to engage in similar work. Whilst the EEAP is a Bristol City Council document, to deliver on the council's ambition to make a difference for nature, it will only succeed by working with others at every stage and challenging others to take similar steps.	Develop guidance and toolkits to production companies contracted by Bristol Film Office to work on location in Bristol that will enable more environmentally friendly working practices
Wider Footprint	<b>I.6</b>	Procurement	To understand and seek ways to reduce our use and consumption of products is crucial so that we do not undermine the health of wildlife and ecosystems beyond the city.	Produce guidance for suppliers around Sustainable Procurement

# Glossary

---

**We have used some words that are associated with the ecological emergency but that you might not come across every day. This glossary explains some of the words and phrases used.**

**Biodiversity Net Gain (BNG):** A requirement for developments to leave biodiversity in a better state than before, typically by ensuring that developments deliver at least a 10% gain in the level of biodiversity.

**Biodiversity:** The variety of all living things (plants, animals and microorganisms) in all environments including land, ocean and freshwater. It includes the difference within and between species among ecosystems.

**Blue & Green Infrastructure:** A network of natural and semi-natural areas like parks, gardens, rivers and ponds that are managed to deliver a wide range of environmental, social and economic benefits in both rural and urban settings.

**Climate Emergency:** A formal statement recognising the urgent need to address climate change as an emergency situation.

**Climate resilience:** The ability to withstand and respond to the effects of the changing climate such as high temperatures, flooding and increased rainfall.

**Canopy Cover:** The proportion of land area covered by trees, used as an indicator of urban greening.

**Corporate Strategy:** Bristol City Council's overarching plan guiding its priorities and actions from 2025–2030.

**Ecosystem:** An ecosystem is a community of living organisms (plants, animals, microorganisms etc.) interacting with each other and with their physical environment (water, soil, and climate) in a specific area.

**Ecological Emergency:** A formal statement recognising the urgent need to address biodiversity and nature loss. Treating this loss as an emergency.

**Floating Ecosystems:** Structures installed on water bodies that support a diverse wetland habitat that supports local biodiversity.

**Local Nature Recovery Strategy (LNRS):** A regional strategy outlining actions for restoring nature, mandated by the Environment Act 2021.

**Managing for Nature:** A Bristol City Council initiative to manage council land with ecological principles to support biodiversity.

**Nature Recovery Network:** A connected system of habitats designed to support biodiversity and ecological resilience.

**Nature Together:** A collaborative project involving communities and partners to develop nature plans for council-owned land.

**One City Ecological Emergency Strategy:** A city-wide strategy developed by Bristol's One City partners to tackle ecological decline.

**One Tree Per Child (OTPC):** A tree planting programme involving school children and volunteers to increase urban canopy cover.

**Really Wild Lockleaze:** A community-led nature recovery project in Lockleaze.

**Sites of Nature Conservation Interest (SNCI):** Designated areas important for wildlife and biodiversity.

**Sustainable Drainage Systems (SuDS):** Infrastructure designed to manage stormwater locally in a way that mimics natural processes. SuDS aim to control surface water runoff, improve water quality and enhance biodiversity by allowing water to infiltrate, attenuate and be treated naturally.

**Urban Green Factor:** A planning policy tool that quantifies the amount and quality of green infrastructure in urban developments.

**Water Framework Directive:** EU legislation used to assess and improve water quality and ecological health of rivers and lakes.

**Wildlife Index:** A tool or dataset used to monitor changes in wildlife populations over time.

