



# Bristol Parks

## Bristol's Parks and Green Space Strategy

### Report on public research April 2005 – March 2006

Contact:  
Bristol Parks  
Bristol City Council  
Tel: 0117 922 3719  
Email: [bristolparks@bristol.gov.uk](mailto:bristolparks@bristol.gov.uk)

PEOPLE  
PARKS &  
NATURE  
working  
together

GRA4148b



## Contents:

	<u>Page</u>		<u>Page</u>
<b>1. Corporate policy</b>	<b>3</b>	<b>5. Results</b>	<b>11</b>
		o Patterns of use	11
<b>2. Introduction</b>	<b>3</b>	o Barriers to accessing parks	22
		o Priorities for improvement	32
<b>3. Research objectives</b>	<b>5</b>	o Priority spaces	41
o Parks and Green Space Strategy	5	o Distance thresholds	46
o Supplementary Planning Document 9	5	o Quality thresholds	53
o Equalities Impact Assessment	6	o Local Need Area report	57
		o Equalities Impact Assessment	64
<b>4. Methodology</b>	<b>6</b>	• Quality of Life survey report	65
o Quality assessments	6	<b>6. Recommendations to inform policy</b>	<b>73</b>
o P&GSS general survey	6	o Research gaps	73
o CD survey for children and young people	7	o Supplementary Planning Document	74
o Focus groups – area-based	7	o Parks and Green Space Strategy	76
o Focus groups – young people	8		
o Focus groups – subject-based	8		
o ‘Once’ report – young people and a bench	9		
o AskBristol	10		
o Quality of Life Survey	10		



## 1. Corporate policy

This public research process, categorised as 'involvement and participation', conformed to the guidance and commitments in the Consultation Strategy 2001. The process was implemented according to the 10 principles for public consultation committed to on the Consultation Strategy:

1. Consultation should be needed
2. Opinion should be informed
3. Decisions should be based on evidence
4. Purpose should be clear
5. Consultation should be well planned and timely
6. Consultation should be inclusive
7. Methods should be appropriate and well-managed
8. Results should be acknowledged and fully considered
9. Accessible feedback should be given
10. Effectiveness should be evaluated

## 2. Introduction

The user participation research took place between April 2005 and March 2006 and research themes were directed by the objectives and requirements of:

- 1) The Parks and Green Space Strategy:  
Themes - barriers to access, priority parks services, priority improvements, patterns of use - most common sites and most common activities.

- 2) The Strategy's adoption of new Bristol provision standards to support planning decision-making:

Themes - priority types of space, quality and quantity thresholds for green space, distance (willingness to travel) thresholds.

- 3) The Strategy Equalities Impact Assessment:

Themes - the impact of current services on different groups, the service needs of different groups defined by race, disability, age, gender, sexuality.

The scope of the research was, as a result, very broad and many different questions were asked and issues explored using a variety of participation methods. These included a paper and online survey, an online discussion forum, focus groups, facilitated workshop sessions, the creation of new consultation tools and working with other agencies to engage with 'hard-to-reach groups'.

The research was carried out in the main by two experienced community development officers with support from technical officers when appropriate. The general public were invited to participate in the research and responded in the survey, discussion forum and focus groups. Some participants were identified from advice given by the Council's Equalities and Inclusion Team, through an existing Bristol Parks stakeholder group and by targeting the city's equalities fora – groups of people that represent communities of need and who act as a consultative body for the local authority and others. With regard to the Equalities Impact Assessment different representative groups and organisations were targeted to

fulfil the need to assess for differential impact according to race, disability, gender, sexuality and age.

In particular the research process sought to engage with those members of the community that currently don't seek to use parks services. Much of the day-to-day communication with the public and past contact through public surveys and questionnaires results in feedback from people that already have a keen interest in green spaces and who use them regularly.

The results and recommendations from this research are detailed and designed to be as comprehensive as possible, as the opportunity to engage face-to-face with so many different groups of interest and need across the city may not arise again for some time. It was also important to be confident that the policies and action plans that are put forward in the Parks and Green Space Strategy are valid for its duration – with reviews as appropriate.

The participation work has engaged with 220 people directly through focus groups and workshops. A further 293 young people have taken part in a schools survey and 176 were engaged in parks. A total of 797 people responded to the paper and online survey and 40 were engaged with a quality assessment process. 14 people participated in the online discussion forum. In total, 1540 people have directly participated in the Strategy research.

Conclusions and recommendations form the final chapter of this report but some key researchers' observations are:

- Safety and the perception of safety of parks is a key issue. Fear over personal safety is the main reason for some people choosing not to visit parks and green spaces. The main cause of fear is the perceived risk of personal attack or verbal abuse.
- Other key reasons why people do not visit parks and green spaces in Bristol are the lack of clean toilet facilities, dog mess and poor maintenance.
- More work needs to be carried out around the accessibility of parks for all sectors of the community. Disabled people are particularly disenfranchised from parks and green spaces in Bristol.
- The basics need to be done better – dog mess, tackling litter and vandalism, provision of basic information.
- There is a need for parks to be more connected to the environment in which they sit – whether that be physically through access infrastructure and connections with bus routes and local amenities, or through the work of other service providers.
- The quality of parks services varies considerably depending on where you live in the city.
- There is a need to carry out 'introductions' to parks, targeted at groups who currently do not access parks and green spaces. There is a need to promote the idea that park facilities belong to everyone and are

owned by everyone. Many people do not know "how" to use parks, and as such are not accessing these community facilities.

- The city's major green spaces (of any key type) would benefit from having a Park Keeper/ Ranger who has a community development approach built into the job description and who can act quickly on issues of community safety (this element of the job is too essential to be left to chance).
- The measure of 'satisfaction' with services provided through the Quality of Life survey is a misleading representation of the real quality of Bristol Parks' services and the perception of those services by the public.

### **3. Research objectives**

#### **Parks and Green Space Strategy**

Research aims for the Strategy reflected its broad policy range and focussed on Bristol Parks core service of providing and maintaining multifunctional parks and green spaces. The research also reflected the function of the Strategy to set actions and priorities as part of a 20-year investment programme.

The research did not attempt to inform in-depth the future provision of some specific services including sports, allotments, conservation management and tree management.

However play services were explored more thoroughly as a result of the involvement of children and young people.

In summary, the research looked specifically at:

- Barriers to access – considering both psychological and physical barriers that prevent parks' use.
- Priority parks facilities – what types of facilities people prefer and in what park setting e.g. natural green space, play area etc.
- Patterns of use – how, why and when people use different types of space.
- Priority improvements – how would people improve green spaces, particularly the spaces they use most often.

Research aims were also guided by PPG17's (Planning Policy Guidance) requirement for the Council to derive new, local green space provision standards and their inclusion as planning guidance in the city's Core Strategy. A key aim was to find out how far people are willing to travel to different types of green spaces. The core data required concerned willingness to walk. A second key aim was show how much of different types of green space people prefer compared to what is currently provided in the city.

#### **Equalities Impact Assessment**

The aim of the Equalities Impact Assessment research was to find out whether existing parks services are having a differential impact on certain communities and whether that impact is adverse (negative). The assessment considers

groups by race, gender, age, sexuality, disability and also people living in the city's Neighbourhood Renewal areas.

The research was conducted so as to isolate the priorities and preferences of these distinct groups and enable a comparison with the wider community.

## **4. Methodology**

### User site quality assessments

A component of Strategy work has been quality assessments of parks and green spaces across the city – with over 450 sites being assessed. The process was called Getting a Measure of Parks (GAMOP). All sites were assessed to pre-set criteria and the work was carried out by trained officers so that results were as consistent and objective as possible.

The breadth of assessment criteria included all park features e.g. site entrances, boundaries, grass, pathways; and facilities e.g. play equipment, seating, noticeboards. Each item was generally assessed for its provision, condition and maintenance. Each item was given a score: 1 = poor, 2 = moderate, 3 = good and 4 = excellent.

The aim of the user site quality assessment was to allow a comparison of assessments taken through GAMOP and by people who use park facilities regularly.

The user site quality assessments were carried out by members of community park groups in the city, all of which

were members of the Bristol Parks Forum, and members of Bristol Physical Access Chain (BPAC) – a group of disabled people that advise Bristol City Council on access issues. The same set of criteria and the same scoring method were used for the user assessments but the assessors did not receive training to carry out the work. This was replaced by an introductory talk about the process and a demonstration about what might be considered poor, moderate, good or excellent. This was because the value of the exercise was in the comparison of a user (subjective) perspective and the City Council assessment perspective.

### P&GSS general survey

The Strategy general survey was made available in both a paper and online version between 1<sup>st</sup> April and 30<sup>th</sup> June 2005. The survey was promoted through the Bristol Parks Forum, Bristol Parks stakeholder group and a promotional leaflet distributed by Parks' staff. Bristol's equality forums were also targeted and a request from St Pauls Unlimited resulted in 30 being completed through door-to-door work. A total of 797 were completed, 520 paper copies and 277 online.

The survey was designed to be a detailed assessment of a respondent's needs and preferences with regard to green spaces and the emphasis was on depth and quality of feedback information as opposed to quantity. The survey explored what activities people do in parks and what facilities they prefer. It also asked about the space they visited the most, how they might improve it and the barriers that stop

them going to green spaces in the first place. The survey explored people's willingness to travel to spaces and how satisfied they were with them. Finally a series of personal questions allowed comparison between user groups.

Respondents were broadly representative of the Bristol population with regard to ethnicity and religion but far more women answered the survey than men, a greater number of respondents had dependent children than the Bristol average and more people over 45 years of age responded than the Bristol average.

### CD survey for children and young people

A general Strategy survey for young people was, like the adults-focussed survey, designed to be a detailed assessment of a respondent's needs and preferences with regard to green spaces. It was designed to be able to be completed on a computer and aimed at 8-12 year olds. By making it accessible on computer it was expected that more young people would be encouraged to respond and also stay engaged for the entire survey.

The survey explored what activities young people do in parks and what facilities they prefer. It also asked about the space they visited the most, how they might improve it and the barriers that stop them using green spaces. It asked about their favourite spaces, how they travel there and how long it takes them to get there. Young people were then asked to design a park that included their top ten facilities. Finally a

series of personal questions allowed comparison between user groups.

Between January and March 2006 a total of 12 schools and one other group of young people participated with a total of 293 completing the survey and designing their 'favourite' park. There were 8% more girls than boys completing the survey and fewer children from ethnic minority groups than the Bristol demographic indicates would be representative.

### Focus groups – area-based

In order to ensure that people from a number of a different areas across Bristol were able to participate in the research a series of workshop / focus group sessions were organised. An officer of the City Council's community development team organised the sessions using contacts or stakeholders already known to Bristol Parks or to other community development officers. The aim was to get a representative mix of people at each session – older people, people with and without children, men and women, young people etc. A particular effort was made to enable people to participate who weren't already involved in advocating green spaces in any way.

Each session was pre planned and the majority followed the same format. An introductory presentation on the Parks and Green Space Strategy was required to give people some context for their responses and it was necessary to introduce some detailed information regarding the consideration of green space as different types (e.g. formal space, sports space, play space) for the exercises following. Participants

were then asked to explore what 'barriers' exist to stop them using green spaces locally and citywide. Using maps and different 'distance circles' respondents were then asked the maximum distance they would be willing to walk from their home to different types of space. They were also asked to play a board game that was designed to elicit their preferences for different types of green space in terms of quality of provision (which spaces is it important to manage at a higher quality level) and quantity of provision (how much of each type should be provided).

A total of seven area-based sessions took place with two sessions being arranged beforehand to help design the workshop process and methods of gathering data. Sessions took place in Southmead, Horfield, Fishponds, Southville, Withywood, St Pauls and Hengrove. The same session design was also carried out with Councillors and at the request of the Women's Forum.

### Focus groups – young people

Focus groups were also arranged with young people as a separate group to other area-based focus groups. Although some young people did attend the area-based focus groups it was recognised that participation methods would have to be adapted to encourage more young people to respond.

Six sessions were carried out with youth groups – the city of Bristol Youth Forum, the Freedom Youth group, Southmead Youth Forum, St. Pauls Adventure Playground and the Listening Partnership. All were arranged with the support of

Bristol City Council's Young People's Services. Two of the groups act as young persons' equalities forums in the city – representing disabled young people and gay, lesbian and bisexual young people.

Each focus group was constructed in a slightly different way but the same themes were repeated several times throughout. As in the area-based focus groups young participants were asked to explore what 'barriers' exist to stop them using green spaces locally and citywide. They also used the maps and 'distance circles' to explore the maximum distance they would be willing to walk from their home to different types of space. Young participants also played the board game designed to elicit preferences for different types of green space in terms of quality of provision and quantity of provision.

### Focus groups – subject-based

Two focus groups were arranged to explore issues and findings that had arisen from other parts of the participation research. Participants were contacted because they put themselves forward as interested in being further involved after having completed the general Strategy survey. Others had been involved in area-based focus groups and had asked to participate further.

Focus group 1 explored issues around safety in parks – what makes people feel unsafe and what might be the solutions? This included a discussion on the role of park keepers. The



group also had a short discussion on the theme of quality versus quantity in terms of green space provision and on what types of events they feel should take place in parks and where.

Focus group 2 explored what might be Bristol Parks spending priorities resulting from the Strategy as far as the group were concerned. The group were encouraged to consider the same categories that were provided in the Strategy general survey: staff presence, safety and security, events and activities, facilities and maintenance.

### 'Once' report – young people and a bench

A Bristol based arts company – 'Once' - were commissioned to consult with young people aged 11 – 16 about parks and green spaces. The work took place in April and May 2005 and 176 young people participated. The consultants visited parks, green spaces and youth clubs in five areas of Bristol – Southmead, Horfield, Easton, Knowle West and Lawrence Weston - to talk to young people about how they feel about the provision of parks in their local area, how they use them, what might stop them from using them, and what they felt was most important.

The consultants commissioned a bench to be made that could be transported to different parks and green spaces around the areas selected. The bench was to encourage social interaction, and be as flexible a space as possible, as well as being safe and sturdy.

The idea was to talk to young people and then go away and type up what people had told said, and fly post these stories and thoughts onto the bench. This gave the bench a sense of growth and development. It also provided a method of communication for young people across the city. They read each other's stories and commented upon them.

The particular questions the consultants were required to answer were:

- Where do young people hang out? What parks do they go to?
- What is the best park for young people in the area? Why? What is the worst? Why?
- Can young people remember a bad time in a park?
- Can young people recount a story about a time they had in a park?
- Can young people recount a funny time in the park?
- Who do individual young people go to the park with?

### Online discussion - AskBristol

AskBristol is an online forum where people with an interest in the city can suggest and discuss local issues and concerns. Membership is open to anyone with an interest in the city, but proactive recruitment is carried out to ensure that the forum membership is representative of the internet-using community.

AskBristol discussed the Parks and Green Space Strategy between April and June 05. 14 people took part in the

discussion and 32 messages were posted. The following questions were posed to prompt comments:

- Why do parks and green spaces matter?
- What are the best things about your local park?
- Is there a park or open space you would like to visit more often, but can't or won't? What's stopping you?
- What improvements do you think could be made to parks and green spaces in your area or in Bristol as a whole?
- Is it possible for a community to have "too much" green space in their area?

### Quality of Life Survey

Bristol Parks has made use of Bristol City Council's annual Quality of Life survey each year from 1999. Although, each year, some questions are commonly focussed to cater for specific needs a constant theme has been to ask respondents how satisfied they are with the quality, quantity and accessibility of their local parks and green spaces. Together with repeat questions on the frequency of park users visits to green spaces this has provided a source of valuable data that can be analysed for response patterns over time.

Directly for the Green Space Strategy, questions in 2004 were included to elicit satisfaction rates for different types of green spaces and the facilities within them.

## 5. Results

### Patterns of use

#### **Summary**

The favourite type of space for respondents is a formal park/public garden that is sited within one mile of their home. All types of space, apart from sports space and Ashton Court are visited within 1 mile of respondents' home. This finding is supported by data for children age 8-12 years, 69% of whom visit a space that is 'very close' or 'close by'.

The next most popular type of space is a grassy, open, informal space. However, 40 respondents chose The Downs as their favourite outdoor space and it is likely that this is influencing the results for informal space.

The results indicate that respondents are often referring to specific sites that have multiple uses. For example respondents play a sport in a formal park and informal space as much as a sports area. As formal parks / public gardens are the most popular type of green space it might be proposed that these too are, in the main, multifunctional spaces. The least popular type of space is sports space.

There is a consistent lack of response in all data to questions concerning sports space which may indicate low interest or that participants don't perceive a strong connection between parks and sports or that they are giving 'sports responses' to other types of space, especially formal parks.

The response for 'conservation work' and 'going on group guided walks' as a favourite activity suggests that there has

been a high response to the survey from people that already have a keen interest in green spaces. This is supported by the fact that only 3 respondents said that they don't visit outdoor spaces.

The favourite activity in a park is 'going for a walk' followed by 'enjoying the environment' and 'taking children to the play area'. However it is noticeable that some of the highest response to favourite activities in parks is for a passive activity – 'reading/enjoying being alone', 'sitting down/relaxing', 'enjoying the environment'. This contrasts with results from children for whom favourite activities are demonstrably active.

If combined, the third highest priority activity is going to an event, large or small. Going to a large event is the 6<sup>th</sup> highest priority. For those that chose 'walking the dog', 'going for a walk' and 'taking children to the play area' as an activity they are a priority activity.

Urban woodlands, wildlife areas and informal spaces play an important part in park users 'enjoying the environment'. For each space it was a priority activity.

The responses to the larger parks – Ashton Court, Blaise, Hengrove and Royal Victoria Park, Bath show that Ashton Court is the most popular site for this sample of respondents and Hengrove Park is the least popular. It is noticeable that more people take children to the play area at Blaise Estate and Royal Victoria Park, Bath than Hengrove. However, as it is known that Hengrove is a busy site this suggests that it is acting more as a local resource. 40% of those that go to

Blaise travel over 1 mile to get there. There is no comparable figure for Hengrove.

Ashton Court is acting as more of a citywide resource than other sites with more people traveling further to get there.

Cycling is a popular activity at Ashton Court. Walking the dog is the most popular activity in Blaise but only the 12<sup>th</sup> most popular at Ashton Court. It is likely that this because of its closer proximity to housing areas.

Significantly more older people (aged 65 or over) use urban woodlands and natural areas than other spaces. 34% of people that chose urban woodland as a favourite space are over 65 years of age, significantly more than those under 29 years of age for these spaces.

Considerably more people under 29 years of age visit play areas as their favourite space in comparison with other types of space. Over 50% of people that visit a play area as their favourite space are aged 30-44 years, 25% are aged 45 years and over.

Nearly 100% of those that chose formal space as a favourite space have children that still live at home, 46% have children under 10 years of age. Larger parks (Ashton Court, Blaise and Hengrove) also attract people with young children in the home. Conversely around half of those that chose urban woodland areas, natural areas, sports spaces and informal areas have no children living at home. This follows the age of respondents that tend to visit these spaces.

There are few patterns with regard to car ownership and use of green space. However, nearly one third of people that visit a formal park as a favourite type do not have access to a car. There is not enough data to analyse why this is but the finding is supported by the fact that 86% of those that visit formal parks live within 1 mile of them.

The significant majority of visits to parks by children and young people aged 8-12 years (the 'CD group') are made with friends and then with family. Only a quarter as many visits by the CD group are made on their own in comparison with friends. Parks have a significant social function – a role supported by evidence from work with other groups of young people. It is noticeable that more girls visit outdoor spaces with their family than boys.

Unlike those that responded to the adult general survey, 18 of those that took part in the CD survey do not currently use outdoor spaces. However this is still a small amount in comparison to the sample size (6%) and is likely to be a 'true' reflection of young people aged 8-12 years generally.

A 'park' is the most popular type of outdoor space generally but that is not surprising as the activities prompted in the survey are park-focussed. As many larger parks are multifunctional then they can readily be host to a range of activities.

The distribution of activities between sites is quite even and it is notable that the street plays an important role in play activities. All the activities prompted in the survey take place in a park environment and the difference between the most

and least popular activity is quite small – i.e. there are no real clear priority activities in a park setting; evidence that they are multifunctional.

Blaise Estate also has a multifunctional role with all activities readily taking place there. Blaise was more popular with the CD group than Ashton Court or Hengrove.

Woodland and natural areas are understandably important areas for 'playing in water', for 'enjoying the trees and wildlife' and quiet activities like 'enjoying reading or being alone'. 'Playing in bushes and climbing trees' is an important activity in a park and woodland area. It is also the 6<sup>th</sup> priority activity for the CD group. Playing a sport is the most popular activity in both a park and a sports space, though a park is the significantly more popular type of space (of course parks may well include a sports space for these respondents).

The activities that the CD group most commonly do are not automatically their priority activities. 'Riding a bike', 'hanging out', 'having a kick-a-bout' and 'playing a sport' are both common and priority activities. 'Playing games' and 'running or walking around' are common activities but not priorities.

The stand-out priority activity for the CD group is 'having a kick-a-bout'. It is a clear 1<sup>st</sup> and 2<sup>nd</sup> priority and 'ball games' is the most common type of game played. In terms of providing services for this group of young people the priorities would be:

1. Kick-a-bout areas and places for sport;
2. Places to ride a bike;
3. Equipped children's play areas;
4. Skateboarding areas;

5. 'Natural facilities' e.g. water, trees and shrubs.

For the CD group 'hanging out', 'riding a bike', 'playing a sport' and 'walking the dog' are higher priorities than using a playground. However using a playground is still a higher priority activity than other 'direct' play activities e.g. playing games, flying a kite, climbing trees, playing in bushes and in water.

## Patterns of use: Supporting evidence

Results from the P&GSS General Survey: *Favourite (top 3) activities and by type of space;*

	Formal park/ garden	Play area	Urban woodland	Natural/ wildlife area	Grassy in- formal space	Sports space/ playing field	Base
Going for a walk	78.1%	8.6%	69.1%	67.7%	62.9%	14.7%	572
Enjoying the environment	78.3%	17.3%	65.8%	68.8%	68.8%	18.3%	503
Going to a large event	73.6%	7.6%	15.0%	14.5%	48.0%	13.3%	421
Having a picnic	68.8%	21.0%	42.6%	44.1%	54.0%	17.3%	404
Sitting down/relaxing	84.6%	12.2%	35.3%	37.8%	50.0%	7.7%	402
Going to a small event	80.2%	23.6%	21.6%	22.6%	38.8%	19.3%	394
Reading/enjoying being alone	83.1%	8.3%	41.8%	42.4%	49.0%	8.3%	349
Taking children to the play area	54.3%	76.6%	25.3%	24.5%	29.1%	16.6%	265
Cycling	64.9%	13.1%	64.5%	48.2%	56.2%	17.9%	251
Going on a group guided walk	64.6%	3.3%	43.5%	51.2%	48.0%	8.9%	246
Playing informal games	66.7%	30.7%	24.2%	24.7%	56.3%	25.5%	231
Going for a jog	68.8%	5.6%	62.3%	54.4%	61.4%	19.1%	215
Supervising children or young people	65.5%	75.0%	32.0%	31.0%	38.5%	22.0%	200
Playing a sport	48.0%	26.0%	12.4%	10.7%	46.9%	54.8%	177
Flying kites	55.6%	7.8%	17.6%	16.3%	65.4%	31.4%	153
Walking the dog	70.5%	9.4%	74.8%	61.9%	72.7%	18.7%	139
Conservation work	41.5%	6.8%	44.1%	51.7%	43.2%	14.4%	118
Supervising a sports team/parks group	58.9%	44.6%	37.5%	37.5%	51.8%	48.2%	56
Skateboarding/skating/rollerblading	53.8%	46.2%	15.4%	10.3%	28.2%	64.1%	39
Base	700	303	597	581	630	287	-

	Ashton Court Estate, Bristol	Blaise Castle Estate, Bristol	Hengrove Play Park, Bristol	Royal Victoria Park, Bath	Base
Conservation work	76.5%	58.8%	9.8%	15.7%	51
Cycling	86.8%	63.2%	7.7%	17.0%	182
Enjoying the environment	84.9%	71.2%	5.9%	24.7%	372
Flying kites	81.0%	52.0%	9.0%	15.0%	100
Going for a jog	82.7%	68.3%	3.6%	19.4%	139
Going for a walk	77.9%	73.1%	6.4%	25.7%	439
Going on a group guided walk	91.7%	45.0%	8.9%	15.4%	169
Going to a large event	95.4%	18.5%	4.3%	9.9%	394
Going to a small event	63.5%	66.0%	6.9%	19.7%	203
Having a picnic	75.0%	60.5%	8.8%	27.7%	296
Playing a sport	75.9%	53.2%	13.9%	20.3%	79
Playing informal games	77.9%	61.0%	8.4%	30.5%	154
Reading/enjoying being alone	80.5%	54.2%	6.3%	25.8%	190
Sitting down/relaxing	76.9%	59.5%	6.9%	24.3%	247
Skateboarding/skating/rollerblading	68.2%	45.5%	27.3%	31.8%	22
Supervising a sports team/parks group	81.3%	71.9%	37.5%	50.0%	32
Supervising children or young people	61.4%	61.4%	24.8%	39.9%	153
Taking children to the play area	39.2%	66.4%	15.7%	41.5%	217
Walking the dog	76.0%	75.0%	10.0%	11.0%	100
Other activity	72.2%	66.7%	2.8%	13.9%	36
Base	543	390	83	202	-

Results from the P&GSS General Survey: *Three most important (priority) activities;*

Activities:	1 <sup>st</sup> priority		2 <sup>nd</sup> priority		3 <sup>rd</sup> priority		Base	
	Number	Percentage	Number	Percentage	Number	Percentage	Number	Overall
Walking the dog	62	7.0%	17	2.3%	24	3.5%	103	74.1%
Going for a walk	212	23.9%	143	19.5%	67	9.8%	422	73.8%
Taking children to the play area	92	10.4%	39	5.3%	39	5.7%	170	64.2%
Going for a jog	52	5.9%	48	6.5%	35	5.1%	135	62.8%
Enjoying the environment	165	18.6%	78	10.6%	63	9.2%	306	60.8%
Cycling	62	7.0%	46	6.3%	40	5.8%	148	59.0%
Going on a group guided walk	29	3.3%	34	4.6%	34	5.0%	97	39.4%
Sitting down/relaxing	34	3.8%	44	6.0%	65	9.5%	143	35.6%
Reading/enjoying being alone	19	2.1%	36	4.9%	56	8.2%	111	31.8%
Going to a large event	24	2.7%	49	6.7%	60	8.8%	133	31.6%
Supervising a sports team/parks group	5	<1.0%	5	<1.0%	7	1.0%	17	30.4%
Playing a sport	19	2.1%	21	2.9%	13	1.9%	53	29.9%
Having a picnic	21	2.4%	41	5.6%	56	8.2%	118	29.2%
Skateboarding/skating/rollerblading	1	<1.0%	7	1.0%	3	<1.0%	11	28.2%
Going to a small event	12	1.4%	33	4.5%	56	8.2%	101	25.6%
Flying kites	13	1.5%	15	2.0%	11	1.6%	39	25.5%
Conservation work	25	2.8%	21	2.9%	20	2.9%	66	21.2%
Supervising children or young people	25	2.8%	36	4.9%	15	2.2%	76	12.5%
Playing informal games	9	1.0%	15	2.0%	18	2.6%	42	3.9%
Base	887	100.0%	734	100.0%	685	100.0%	-	-

Priority is calculated in 2 ways here. The activities are listed in priority order when weighted – for all those that chose ‘walking the dog’ as an activity they do in parks, 74.1% of them listed it as a priority activity. Therefore the top 5 priority activities are listed in the left hand column. The other way of recognizing the priorities is to simply count how many chose the activity in their top3. These priorities are highlighted in the second to last column on the right. The two highlighted in blue are both those that refer to events which could be put together to make a priority activity.



Results from the P&GSS General Survey: *Type of space most time spent in:*

	Number	Percentage
Local formal park/public garden	217	33.9%
Local play area	43	6.7%
Urban woodland area	50	7.8%
Natural/wildlife area	48	7.5%
Grassy, open, informal space	111	17.3%
Sports space/playing field	35	5.5%
Ashton Court Estate, Bristol	62	9.7%
Blaise Castle Estate, Bristol	51	8.0%
Hengrove Play Park, Bristol	5	<1.0%
Royal Victoria Park, Bath	16	2.5%
I don't visit any outdoor places	3	<1.0%
Base	641	100.0%

Results from the P&GSS General Survey: *Distance to favourite type of space:*

	Within 1 mile	1-2 miles	3-5 miles	5 miles+	Base
Local formal park/public garden	86.0%	9.3%	2.3%	2.3%	211
Local play area	57.1%	12.2%	26.5%	4.1%	43
Urban woodland area	60.0%	13.3%	15.6%	11.1%	49
Natural/wildlife area	70.6%	14.7%	11.0%	3.7%	45
Grassy, open, informal space	79.4%	8.8%	11.8%	-	109
Sports space/playing field	3.3%	41.0%	39.3%	16.4%	34
Ashton Court Estate	27.5%	37.3%	25.5%	9.8%	61
Blaise Castle Estate	60.0%	20.0%	20.0%	-	51
Hengrove Play Park	31.3%	-	12.5%	56.3%	5
Royal Victoria Park	86.0%	9.3%	2.3%	2.3%	16
Base	372	116	91	45	624

Results from the P&GSS General Survey: *The age of the respondent with their favourite type of space:*

Age of respondent	Type of space - % response						
	Formal space	Play area	Urban woodland	Natural area	Sports space	Informal space	Larger park
19 and under	0.92	9.30	0	0	2.86	0.90	0
20 – 24	3.69	4.65	4.00	2.08	5.71	1.80	2.24
25 – 29	5.53	9.30	0	8.33	0	7.21	5.22
30 – 44	<b>32.26</b>	<b>51.16</b>	24.00	14.58	17.14	<b>20.72</b>	<b>32.09</b>
45 – 59	<b>27.19</b>	<b>13.95</b>	<b>28.00</b>	<b>33.33</b>	<b>34.29</b>	<b>30.63</b>	<b>23.13</b>
60 – 64	6.45	6.98	8.00	8.33	8.57	8.11	8.96
65 – 74	14.29	0	<b>28.00</b>	<b>25.00</b>	<b>25.71</b>	17.12	17.16
75 and over	6.91	2.33	6.00	6.25	5.71	9.91	7.46

Results from the P&GSS General Survey: *The incidence and age of respondents' children in the household with their favourite type of space:*

Age of children in the household	Type of space - % response						
	Formal space	Play area	Urban woodland	Natural area	Sports space	Informal space	Larger park
None	<b>15.67</b>	9.30	<b>48.00</b>	<b>54.17</b>	<b>54.29</b>	<b>47.75</b>	41.04
0 – 4	<b>15.21</b>	<b>51.16</b>	8.00	2.08	8.57	4.50	<b>10.45</b>
5 – 10	<b>10.14</b>	<b>41.86</b>	6.00	2.08	11.43	9.01	<b>17.16</b>
11 – 15	3.69	6.98	12.00	6.25	8.57	8.11	<b>8.96</b>
16 – 17	8.29	4.65	6.00	2.08	5.71	6.31	6.72
18 and over	42.86	2.33	14.00	20.83	14.29	13.51	14.18

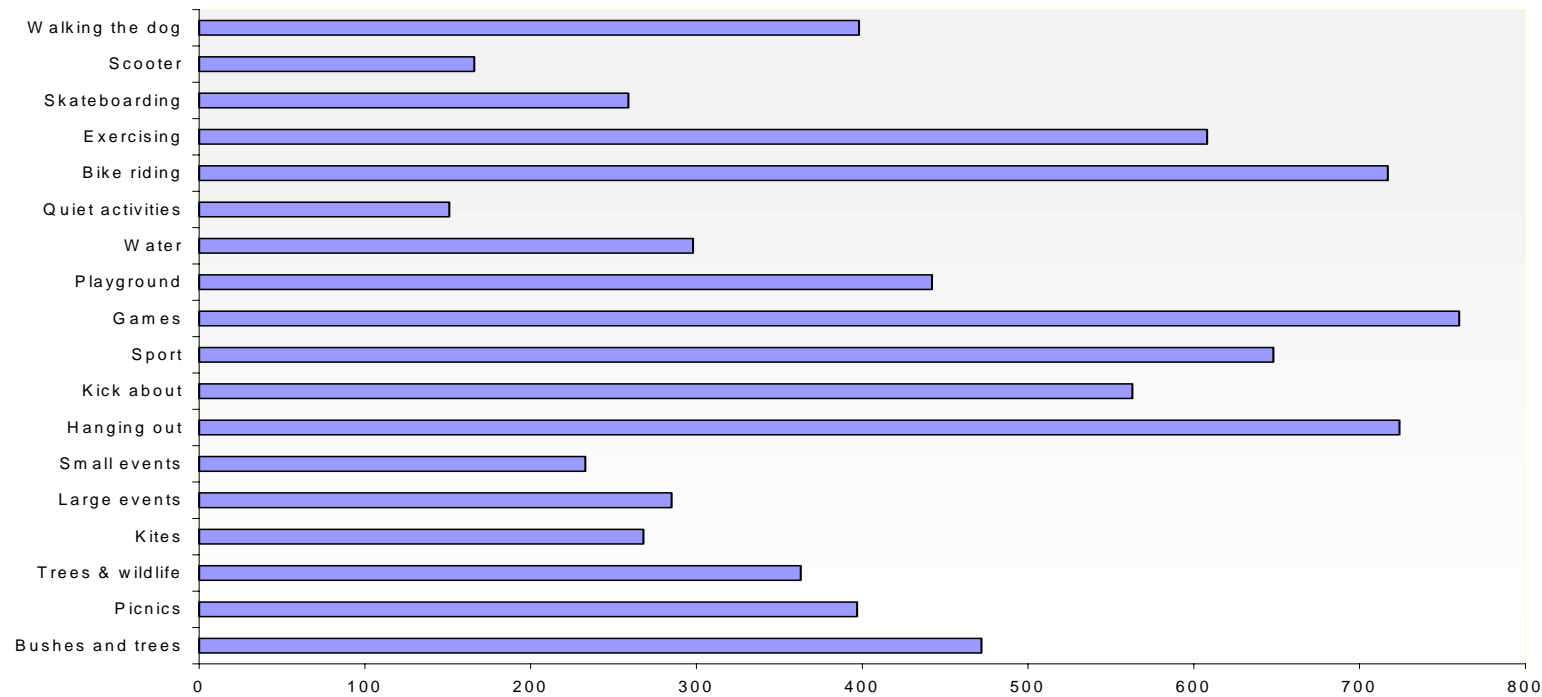
Results from the P&GSS General Survey: *Respondents' access to a car and their favourite type of space:*

Do you have access to a car?	Type of space - % response						
	Formal space	Play area	Urban woodland	Natural area	Sports space	Informal space	Larger park
No	<b>31.80%</b>	20.93%	20.00%	18.75%	<b>17.14%</b>	25.23%	18.66%
Yes	64.98%	76.74%	76.00%	79.17%	82.86%	72.97%	77.61%

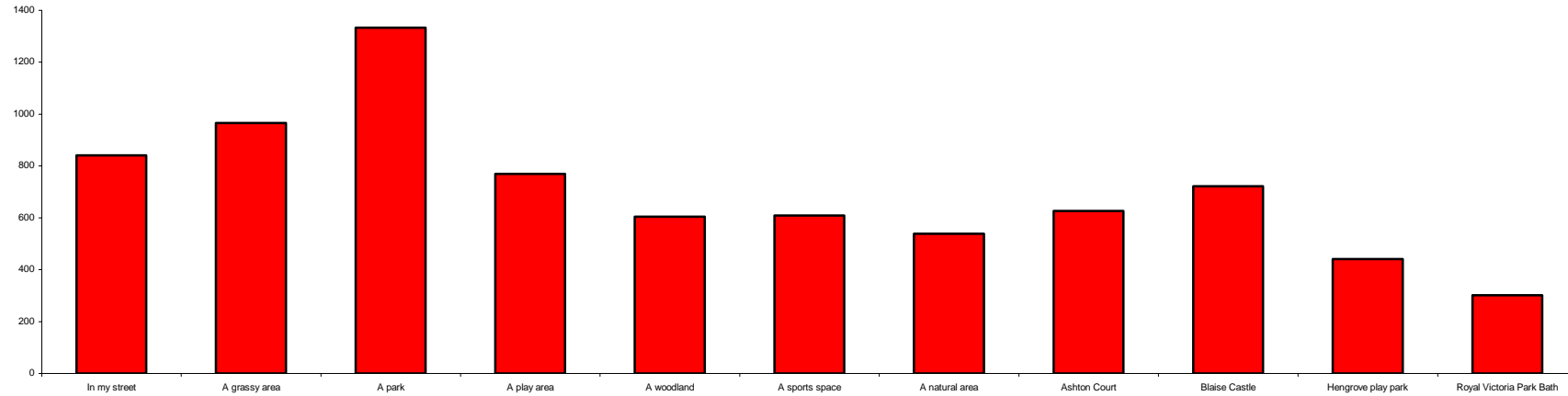
Results from the CD survey with children and young people: *“Do you like to spend time outdoors, on your own or with other people?”*

	All	Male	Female
<b>No – I don’t spend any time outdoors</b>	<b>18</b>	10	8
<b>Yes – on my own</b>	<b>55</b>	29	26
<b>Yes – with friends</b>	<b>224</b>	107	117
<b>Yes – with family</b>	<b>132</b>	47	85
<b>Yes – with other groups</b>	<b>37</b>	21	16

Results from the CD survey with children and young people: *“What activities do you like to do when you spend time outdoors?”*



Results from the CD survey with children and young people: *"Where do you like to do these activities?"*



Activity	In my street	A grassy area	A park	A play area	A woodland	A sports space	A natural area	Ashton Court	Blaise Castle	Hengrove	Bath
Playing in bushes and climbing trees	0	12	18	9	14	7	8	9	10	7	6
Having a picnic	3	14	17	9	11	4	10	10	11	5	6
Trees and wildlife	7	13	14	6	15	4	12	9	10	4	6
Flying a kite	6	18	17	7	6	3	9	11	13	6	4
Going to a large event	6	16	13	8	4	10	4	19	10	5	5
Going to a small event	11	13	17	6	7	8	9	10	8	7	4
Hanging out with friends	16	10	17	11	6	10	6	6	8	7	3
Having a kick-about	12	15	17	10	4	13	4	8	9	5	3
Playing sport	9	16	20	10	4	15	3	7	8	5	3
Playing games	11	13	18	13	6	8	6	7	9	5	4
Playing in water	5	10	14	8	15	6	14	7	10	7	4
Quiet activities	12	16	18	7	13	2	13	7	6	3	3
Riding a bike	19	10	17	8	7	7	6	8	9	6	3
Exercising	13	12	16	9	9	7	9	8	8	6	3
Skateboarding	22	5	18	14	4	9	4	5	9	6	4
Riding a scooter	20	7	18	14	4	7	5	5	7	7	6
Walking the dog	12	15	15	7	11	5	8	9	11	5	2

Results from the CD survey with children and young people:  
*"What sorts of games do you like to play?"*

Ball games	48%
Running around games	45%
Climbing and jumping	33%
Hide and seek	32%
Marbles and crazy bones	11%
Make believe	10%

Results from the CD survey with children and young people:  
*"Words that best describe the activities you most like to do?"*

Running	63%
Climbing	46%
Riding	44%
Throwing	34%
Jumping	29%
Walking	28%
Sitting	25%
Rolling	18%
Skipping	14%
Watching	13%

Results from the CD survey with children and young people:  
*"Imagine you were only able to choose 3 of these activities – which would you choose?"*

1 <sup>st</sup> Choice – 263		2 <sup>nd</sup> Choice - 268		3 <sup>rd</sup> Choice – 268	
Kick about	62	Bike riding	40	Bike riding	37
Bike riding	35	Sport	36	Hanging out	32
Hanging out	25	Kick about	27	Walking the dog	29
Sport	23	Hanging out	25	Sport	29
Walking the dog	22	Walking the dog	19	Playground	18
Bushes or trees	15	Playground	16	Exercising	16
Skateboarding	14	Skateboarding	13	Games	13
Playground	12	Trees & wildlife	12	Kick about	13
Trees & wildlife	10	Scooters	12	Large events	12
Large events	10	Games	11	Scooters	11
Picnics	8	Water	10	Bushes or trees	10
Water	6	Bushes or trees	9	Picnics	1-
Exercising	6	Large events	9	Trees & wildlife	9
Scooters	5	Exercising	9	Water	8
Games	4	Picnics	8	Skateboarding	8
Quiet activities	4	Quiet activities	7	Quiet activities	6
Kites	2	Small event	3	Kites	3
Small event	0	Kites	2	Small event	3

## Barriers to accessing parks

### **Summary**

Focus groups members put forward a wide range of barriers that prevented them from using green spaces. The variety of issues raised resulted from the variety of different groups that participated and the varying needs of those that took part. Many issues were very specific - 24 separate issues were raised by individuals that weren't raised by any others.

The range of different issues means that it is important to identify those measures and actions that can address a number of issues simultaneously. It also means that it is likely that Bristol Parks will need to work closely with other agencies to deliver improvements.

The largest number of single issues, 33, came from a mental health service users group (the MIND group). The lowest number of issues came from the two focus groups but this is most likely due to facilitators choosing to focus on specific themes.

The two top issues from focus groups were the need for a park keeper or similar in parks i.e. the current lack of them, and the presence of dogs on-site. The issue of a park keeper came from all groups apart from a group of visually impaired people (VIP group). The presence of dogs on a site is a particular issue for disabled groups (VIP group, disabled persons group and carers of disabled children's group), older people and some young people.

The next top issues were fear of crime – a persistent theme in this research – and vandalism. Young people, older people and the MIND group raised the issue of fear of crime and young people especially chose to highlight many related issues. Vandalism was a big issue for most groups with the exception of disabled groups which have other priorities.

The presence of gangs of teenagers or young adults in parks is a key issue for park users. 6 of 10 groups identified this as a barrier to access and it is interesting that 3 of those were young peoples' groups.

Intimidation/bullying from other park users was a 'safety' concern raised by 4 groups – 2 youth groups, the MIND group and carers of disabled children. Clearly, the need for a mechanism of controlling behaviour in parks is a key issue to be tackled to encourage many non-users back in to parks.

Drug related issues were a clear concern for nearly all groups. There is a clear view that people see parks and green spaces as places that attract illegal drug use. For disabled groups this was less of an issue but perhaps, again, this is because they have other priorities.

It is notable that a lack of facilities in parks is a particular barrier for disabled groups, the MIND group and one young persons group. Carers of disabled children highlighted an individual need for facilities for disabled children and young people. In addition, the MIND group, VIP group and carers of disabled children gave a 'holistic' comment that 'parks are not welcoming'.

The provision of information – audio, website, noticeboard – is a particular concern for disabled people, particularly visually impaired people. This is supported by other research.

The P&GSS general survey data is comparable to some degree with focus group results. It is noticeable that the top barrier to access, a site being too far away, which was a prompted answer in the survey does arise from focus groups – MIND group, Youth Forum and disabled young people’s group. As with focus groups, safety and dogs mess in parks are key issues from the survey. The focus groups revealed dogs’ mess to be a barrier to all groups using parks.

The response from the CD group (children and young people aged 8-12 years) demonstrated that the main reasons for not doing a particular activity cannot be challenged by Bristol Parks services - they ‘don’t have enough time’ followed by they ‘can’t find someone to visit the space with them’. However, as there were also a lot of reasons stated that are distinctive to individuals (‘other’) it may suggest the survey could have provided other choices.

Only 10% stated that they don’t do an activity because they don’t have appropriate facilities nearby. It can be assumed therefore that as the key activities the CD group don’t do - riding a scooter, playing in a playground, walking the dog and having a picnic – this isn’t generally because of a lack of facilities or space.

The main reason that the CD Group don’t visit a particular space is that it is ‘too far away’. This is commensurate with the finding of the P&GSS general survey and reinforces the

finding that local spaces or local facilities are important to children and young people as well as other park users. When the top five reasons for not visiting a particular space from both consultation techniques and groups are considered there is remarkable similarity:

P&GSS general survey	CD survey (8-12 yr olds)
Too far away	It’s too far away
Too difficult to get there	Dog mess
Don’t feel safe there	Litter lying round
Teenagers hang around	I don’t feel safe
Dog mess	Older children hanging round

Dog mess, litter and an area being overgrown and muddy are slightly greater deterrents for the CD group. Again safety is an area of concern for both groups as was found repeatedly in the focus groups.

The top three parks and green spaces that the CD Group do not visit but would like to are all the city’s more significant sites e.g. Blaise Castle, Hengrove Play Park and Ashton Court. This is commensurate with the main reason for not visiting being because a site is too far away as many of those that completed the survey do not live near these spaces. Overall the frequency of choices is reasonably evenly distributed between different types of space - especially so when the top three are removed. As woodlands, natural areas and sports space are not so commonly used than parks (see page 14), the fact that the CD Group would like to use them as much suggests that more or greater barriers are preventing this. There is not enough information however to isolate what these barriers are.

## Barriers to accessing parks: Supporting evidence

Barriers to access / the reasons why people don't visit parks were explored in detail using focus groups. These groups include public groups but also equalities groups – with disability groups, young people, a women's group, an older people's group and people from different ethnic groups. The results of these are summarised in the following tables:

Barrier	MIND	Visually Impaired Persons	Freedom Youth	Bristol Youth Forum	Physical Access Chain	Older Peoples Forum	Listening Partnership	Carers of disabled children	Focus Group 1	Focus group 2	Total mentions
Disorientation		1									1
Intimidation/ bullying from others park users	1		2	1				2			6
Gangs/ teenagers	1	1	2	1			1		1		7
Agorophobia	1										1
Lone adults asked to move on by police	1										1
Over-protective parents	1										1
Fear of crime / not safe	1	1	4			1	1				8
Not enough people in parks	1								1		2
Too far to travel	1			1			2				4
No on-site presence / park keeper	1		1	1	1	1	1	1	1	1	9
Young people not welcome	1										1
No activities	1		1								2
No cafes/ refreshments	1										1
Scooters/ motorbikes	1	1		1		1	1	1			6



Barrier	MIND	Visually Impaired Persons	Freedom Youth	Bristol Youth Forum	Physical Access Chain	Older Peoples Forum	Listening Partnership	Carers of disabled children	Focus Group 1	Focus group 2	Total mentions
No shelter	1		1								2
Sport (being played)	1										1
No separate area for teens	1			1							2
No children only areas	1										1
No children only toilets	1										1
Homeless/ prostitute intimidation	1					1					2
Drug litter	1		1	1	1	1	1				6
No toilets/ poor toilets	1	1	1	1		1		1			6
Not accessible toilets	1							1			2
No play wardens	1							1			1
Drugs being used on-site	1		1	1		1	2		1		7
Suffering verbal abuse	1							1			2
Dogs being on-site	1	1	1		1	3			1	1	9
The park is not welcoming	1	1						1			3
No training for workers to respond to specific needs								1			1

Barrier	MIND	Visually Impaired Persons	Freedom Youth	Bristol Youth Forum	Physical Access Chain	Older Peoples Forum	Listening Partnership	Carers of disabled children	Focus Group 1	Focus group 2	Total mentions
Not lighting after dark	1		1	1				1			4
The park is too busy (with people)	1						1				2
Not enough facilities available	1		1				1	1	1		5
Rubbish/litter/ Dumping	1	1	2	1	1	1					7
Lack of seating	1		1		1	1			1		5
Vandalism	1		1	1			2		2	1	8
Not enough well defined paths		1			1			1			3
No buses to get there		1		1							2
Ramps		1									1
Not enough information on getting there		1									1
Lack of maintenance		1	1	1	1				1	1	6
Not enough road crossings		1			1						2
Skateboarders		1									1
No noticeboards on-site		1			1						2
Access gates are locked		1			1						2
No disabled parking								1			1

Barrier	MIND	Visually Impaired Persons	Freedom Youth	Bristol Youth Forum	Physical Access Chain	Older Peoples Forum	Listening Partnership	Carers of disabled children	Focus Group 1	Focus group 2	Total mentions
'Perverts'			1								1
Dog poo			1	1	1	1	1		1	1	7
People urinating in the park			1				1				2
People having sex in the park			1								1
Not enough police patrols			1								1
Roads				1							1
Reputation				1	1	1				1	4
Not allowed				1							1
No audio info					1						1
Anti social behaviour					1			1			2
No right to use					2			1			3
Not enough dog bins					1	1					2
No website info					1						1
Lack of cycle only paths							1				1
No disabled facilities for young people								1			1

*Summary of barriers from focus groups:*

<b>Barrier to accessing parks</b>	<b>No of mentions</b>
No on-site presence / park keeper Dogs being on-site	9
Fear of crime / not safe Vandalism	8
Gangs / teenagers Drugs being used on-site Rubbish/litter/Dumping Dog poo	7
Intimidation/ bullying from others park users Scooters/ motorbikes Drug litter No toilets / poor toilets Lack of maintenance	6
Not enough facilities available Lack of seating	5
Too far to travel No lighting after dark Reputation	4

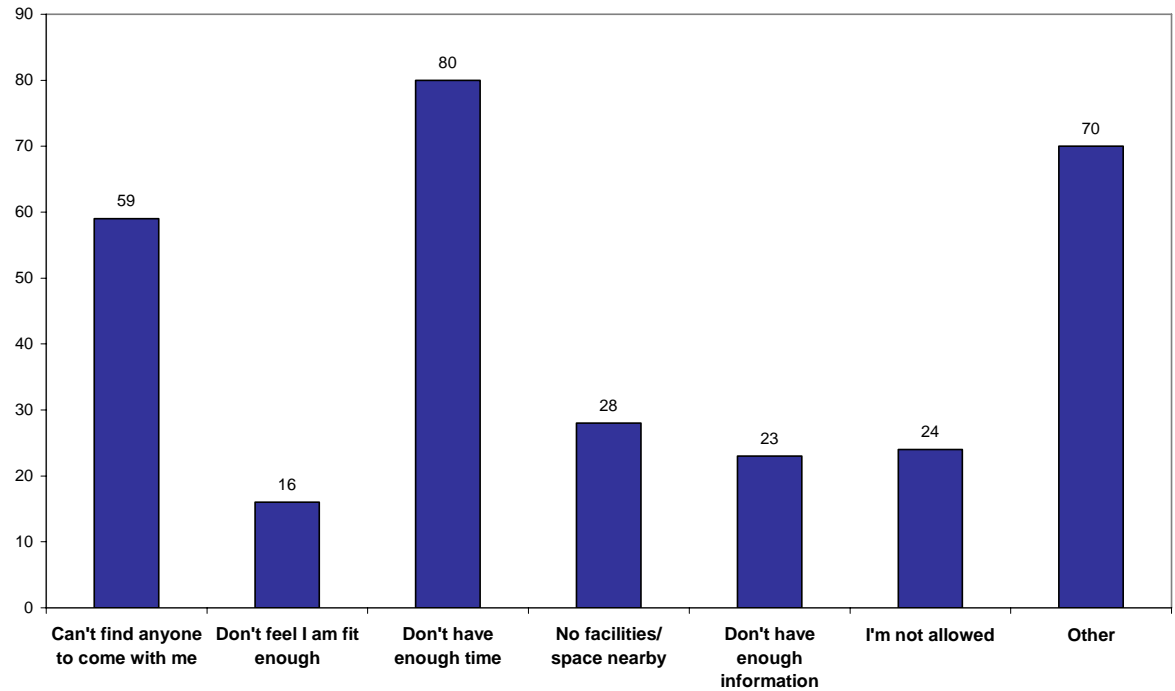
Results from the P&GSS General Survey: *Reasons for not visiting parks (barriers to access):*

	<b>Number</b>	<b>Percentage</b>
Too far away	124	35.3%
Too difficult to get there	66	18.8%
Don't feel safe there	64	18.2%
Teenagers hang around	39	11.1%
Dog mess	36	10.3%
Area is run-down/vandalized	34	9.7%
Litter	33	9.4%
Difficult to access	30	8.5%
Too many dogs	25	7.1%
Near a busy road	20	5.7%
Don't feel welcome there	19	5.4%
Play equipment unsuitable	16	4.6%
Too many people playing football	14	4.0%
Overgrown and muddy	11	3.1%
Play equipment not well kept	11	3.1%
Nothing interesting to do there	10	2.8%
Base	351	100.0%

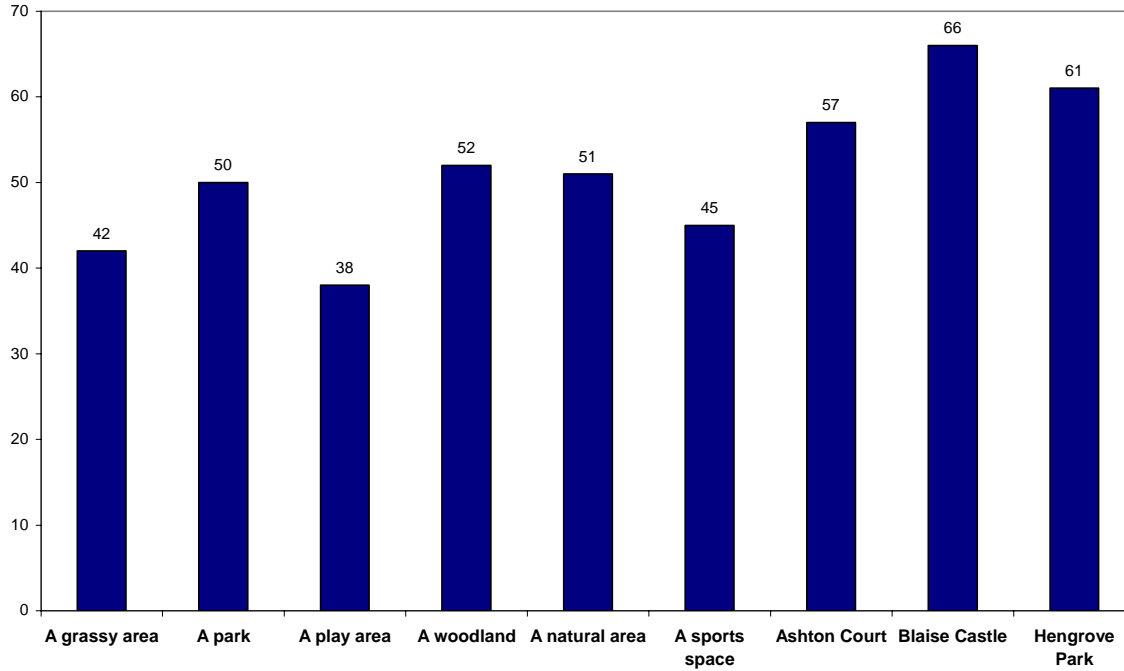
Results from the CD survey with children and young people:  
*"Is there any activity you don't do but you would like to do?"*

	Frequency
Using your scooter or scootex	51
Going to a Playground	51
Walking the dog	49
Having a picnic	48
Playing in bushes and climbing trees	42
Playing in water or splashing in a stream	42
Quiet activities like enjoying being alone or reading	41
Enjoying the trees and wildlife	40
Using your skateboard, skates or rollerblades	39
Flying a kite	37
Having a kickabout	34
Going to a large event where there are lots of people	31
Running or walking around	31
Going to a small event where there are not many people	30
Riding a bike	28
Playing a sport like football, basketball or tennis	24
Hanging out with friends	15
Playing games	15

Results from the CD survey with children and young people:  
*"Are there any particular reasons why you don't do (an activity)?"*



Results from the CD survey with children and young people:  
*"Are there any parks or green spaces in Bristol that you do not visit much but you would like to?"*



Results from the CD survey with children and young people:  
*"Are there any particular reasons why you don't visit these places much?"*

	Frequency
It's too far away	99
Dog mess on the ground	68
Litter lying around	49
I don't feel safe	48
Older children hang around	46
Near busy road	44
They are overgrown and muddy	34
Too many dogs	32
Nothing to do there	31
Play equipment is for younger children	31
Difficult to get around	27
I don't feel welcome	24
I prefer playing indoors	24
Play equipment isn't looked after	21
I don't like playing football or games	14

Results from the CD survey with children and young people:  
*"Are there any particular reasons why you don't visit these places much?"*

	Response	% of respondents
It's too far away	99	34%
Dog mess on the ground	68	23%
Litter lying around	49	17%
I don't feel safe	48	16%
Older children hang around	46	16%
Near busy road	44	15%
They are overgrown and muddy	34	12%
Too many dogs	32	11%
Nothing to do there	31	11%
Play equipment is for younger children	31	11%
Difficult to get around	27	9%
I don't feel welcome	24	8%
I prefer playing indoors	24	8%
Play equipment isn't looked after	21	7%
I don't like playing football or games	14	5%

## Priorities for improvement

### **Summary**

Questions on how participants might improve parks and green spaces were designed in to the P&GSS general survey and the CD survey with children and young people 8-12 years. Other questions relevant to this section were designed in about which facilities the participant would place in their ideal park. Participants were also asked to consider improvements and facilities by type of space.

The focus groups did not specifically seek to elicit data on improvements and priority facilities but comments were made on this by respondents.

When respondents were asked directly in the P&GSS survey about what improvements they would like to make to the space they spend most time in the results could be analysed to elicit what type of space that was and hence what improvements might be recommended for that type of space generically. The data shows that the priority improvements when all spaces are considered together are:

- 'keep it cleaner – get rid of litter and dog mess';
- 'stop it being vandalised'; and
- 'providing a park keeper/ regular staff presence'.

'Keep it cleaner – get rid of litter and dog mess' is consistently a greater priority than 'basic maintenance' suggesting this element of park maintenance is more important to the public.

'Providing a park keeper/ regular staff presence' is the top priority for both formal parks/gardens and urban woodland

areas and 'Keep it cleaner – get rid of litter and dog mess' is the top priority in informal, grassy areas, natural areas and the larger parks e.g. Ashton Court/Blaise Estate.

When the top five priority improvements for any type of space are considered:

- 'better lighting' and 'more flower beds, trees and shrubs' are only given for formal parks/gardens;
- 'a separate place for older kids to hang out' is only given for play areas;
- 'improve personal safety' is only given for informal, grassy areas;
- 'improve entrances/pathways (easier to access)' is only given for urban woodland areas;
- 'create a no dogs allowed area' is only given for larger parks e.g. Ashton/Blaise.

For play areas it is noticeable that 'better play equipment' is easily the top priority for improving this type of space i.e. new equipment takes priority over the overall priority improvements.

With regard to priority facilities, the priority facility for respondents to the P&GSS general survey was toilets followed by seating and trees. The frequency distribution of response for the priority facilities is very even – with only an 18% difference between the top priority and 11<sup>th</sup> priority. The data indicates that for this group of respondents 'natural' features/facilities are as important as 'fittings' facilities i.e. in the top ten priorities five are 'natural' – trees, large grasses area, pond or stream, woodland area, flower beds/landscaped area; four are 'fittings' facilities - toilets, seating, accessible entrances/pathways and picnic benches.



The lowest priorities are all 'fittings' facilities e.g. tennis court, crazy golf, youth club building, shelter for young people, bandstand, information/noticeboard. Strategy research shows that many of the top priorities are also priorities for older people who are over represented in the survey group. However, results from the CD survey with children and young people do not show strong support for these facilities either.

Eleventh priority was a 'No dogs allowed area' which was chosen by over 41% of respondents. Of these the significant majority (63%) would choose this facility as a 'larger dog-free area for everyone'.

When the P&GSS results are compared with the results from the CD survey with children aged 8-12 years (the CD group), five of the top ten priorities are shared:

Facility	Priority for CD group	Priority from P&GSS survey
Play area	1	
Toilets	2	1
Picnic benches	3	10
Refreshments/ice cream van	4	
Football pitch	5	
Trees	6	3
Pond	7	6
Event area	8	
Seating	9	2
Skatepark Tennis	10	

Most notable is that the second priority facility for a park for the CD group is the same as the top priority from the P&GSS survey; toilets.

When, in the P&GSS general survey, respondents were given the opportunity to allocate resources between facilities, maintenance, safety and security, a park keeper and events/activities the distribution of response was relatively even, especially so for the top three – indicating that they are all priorities. Maintenance came out as the top choice by 4% from facilities 5% from safety and security. This emphasised other research findings of the importance of tackling issues of safety as a priority in parks and green spaces.

The data for priority facilities was cross referenced with respondents use of spaces to provide an idea of what facilities might be recommended for different types of space generically. When the priority facilities for each space are compared with priority facilities overall, the notable differences are:

- Formal parks and gardens – a park keeper and flowerbeds are slightly higher priorities for this space. The frequency distribution of response is quite even with a range of facilities being important in this type of space;
- Play areas – not surprisingly play equipment and a no dogs allowed area are much greater priorities for this type of space. Picnic benches and refreshments are a greater priority facility for this type of space;

- Urban woodland area – not surprisingly woodland and a pond or stream are greater priorities for this type of space. The provision of toilets are of lesser importance;
- Natural area – very similar profile as urban woodland area;
- Sports space – perhaps surprisingly seating is the top priority facility for this type of space. A no dogs allowed area is also a greater priority;
- Informal, grassy space – the provision of accessible entrances and pathways, a park keeper and toilets are lesser priorities for this type of space. Trees remain a priority for this type of space;
- Larger parks e.g. Ashton/Blaise – accessible entrances/pathways and picnic benches are a greater priority. The provision of seating is a slightly lesser priority. Toilets are the top priority.

It is important to recognise that this does not mean those identified as lesser priorities above are not priorities per se, only that they are lesser priorities when compared with the overall results for all sites.

## Priorities for improvement: Supporting evidence

Results from the P&GSS General Survey: *“Imagine that you had the opportunity to design your own park. What would be the ten most important facilities that you would want to include in your design?”*

	Number	Percentage
Toilets	474	59.5%
Seating	412	51.7%
Trees	403	50.6%
Accessible entrances/pathways	379	47.6%
Large grassed area	378	47.4%
Pond or stream	374	46.9%
Staff presence e.g. park keeper	364	45.7%
Woodland area	353	44.3%
Flower beds/landscaped area	350	43.9%
Picnic benches	348	43.7%
‘No Dogs Allowed’ area	331	41.5%
Bushes/shrubs	304	38.1%
Play equipment	292	36.6%
Refreshments van/café	270	33.9%
Area for events	228	28.6%
‘Quiet’ area	223	28.0%
Information/notice board	206	25.8%

	Number	Percentage
Bandstand	121	15.2%
Kick-about area with basketball hoop	106	13.3%
Shelter for young people	76	9.5%
Football pitch	69	8.7%
Youth club building	56	7.0%
Crazy golf	49	6.1%
Tennis court	41	5.1%

Results from the P&GSS General Survey: *“You said you would like a ‘No Dogs Allowed’ area in your ideal park. Thinking about your local park in Bristol, would you visit it more often if it had any of the following?”*

	Number	Percentage
Small dog-free area linked to play area	89	26.9%
Larger dog-free area for everyone	208	62.8%
Dog-free zones at certain times of year	68	20.5%
No reply	57	17.2%

Results from the P&GSS General Survey: *“Imagine that you were given an amount of money to spend on your newly designed park. How would you spend it?”*

	Number	Percentage
Maintenance	701	88.0%
Safety and security	660	82.8%
Facilities	670	84.1%
Staff presence e.g. park keeper	583	73.1%
Events/activities	495	62.1%

Results from the P&GSS General Survey: *“What, if any, are the three most important improvements you would like to make (to the place you spend most time in)?”*

Formal parks and gardens	Frequency	Percent
A park keeper or regular staff presence	61	28.11%
Keep it cleaner - get rid of litter/dog mess	60	27.65%
Stop it from being vandalized	56	25.81%
More flower beds, trees and shrubs	43	19.82%
Better lighting	36	16.59%
Create a 'No Dogs Allowed' area	35	16.13%
Improve basic maintenance	35	16.13%
Better play equipment	33	15.21%
Better condition of facilities	30	13.82%
Improve personal safety	30	13.82%

Play area	Frequency	Percent
Better play equipment	23	53.49%
A separate place for older kids to hang out	12	27.91%
Keep it cleaner - get rid of litter/dog mess	11	25.58%
Stop it from being vandalized	10	23.26%
A park keeper or regular staff presence	9	20.93%
A better sports/kick-about area	8	18.60%
A place to use bikes and skateboards	8	18.60%
Better condition of facilities	8	18.60%
Improve basic maintenance	8	18.60%

Urban woodland area	Frequency	Percent
A park keeper or regular staff presence	18	36.00%
Keep it cleaner - get rid of litter/dog mess	14	28.00%
Stop it from being vandalised	13	26.00%
Improve entrances/pathways (easier to access)	9	18.00%
Nothing needs improving	7	14.00%
Improve basic maintenance	7	14.00%
Create a 'No Dogs Allowed' area	6	12.00%
A separate place for older kids to hang out	5	10.00%
Improve personal safety	5	10.00%
More flower beds, trees and shrubs	5	10.00%

Natural area	Frequency	Percent
Keep it cleaner - get rid of litter/dog mess	18	37.50%
Stop it from being vandalised	15	31.25%
Nothing needs improving	14	29.17%
A park keeper or regular staff presence	9	18.75%
Improve basic maintenance	7	14.58%
Improve entrances/pathways (easier to access)	5	10.42%
More flower beds, trees and shrubs	5	10.42%
Better condition of facilities	3	6.25%
Create a 'No Dogs Allowed' area	3	6.25%
Improve personal safety	3	6.25%

Grassy, informal areas	Frequency	Percent
Keep it cleaner - get rid of litter/dog mess	35	31.53%
Stop it from being vandalized	26	23.42%
A park keeper or regular staff presence	25	22.52%
Nothing needs improving	20	18.02%
Improve personal safety	20	18.02%
Improve basic maintenance	17	15.32%
Information/notice board	14	12.61%
More flower beds, trees and shrubs	14	12.61%
Better condition of facilities	11	9.91%
Create a 'No Dogs Allowed' area	10	9.01%
Improve entrances/pathways (easier to access)	10	9.01%

Sports space	Frequency	Percent
Stop it from being vandalised	11	31.43%
Nothing needs improving	10	28.57%
Improve basic maintenance	9	25.71%
Keep it cleaner - get rid of litter/dog mess	8	22.86%
A better sports/kick-about area	6	17.14%
A park keeper or regular staff presence	6	17.14%
Better condition of facilities	6	17.14%
Better play equipment	6	17.14%
Create a 'No Dogs Allowed' area	4	11.43%

Larger parks – Ashton, Blaise	Frequency	Percent
Keep it cleaner - get rid of litter/dog mess	34	25.37%
Create a 'No Dogs Allowed' area	26	19.40%
Stop it from being vandalized	26	19.40%
A park keeper or regular staff presence	25	18.66%
Move it nearer to my home!	24	17.91%
Nothing needs improving	23	17.16%
Improve entrances/pathways (easier to access)	15	11.19%
Information/notice board	15	11.19%

Results from the P&GSS General Survey: *“Imagine that you had the opportunity to design your own park. What would be the ten most important facilities that you would want to include in your design?”*

Formal parks and gardens:	Frequency	Percent
Toilets	152	70.05%
Trees	138	63.59%
Seating	131	60.37%
Staff presence e.g. park keeper	126	58.06%
Flower beds/landscaped area	123	56.68%
Large grassed area	121	55.76%
Pond or stream	113	52.07%
Bushes/shrubs	110	50.69%
Accessible entrances/pathways	109	50.23%
Play equipment	104	47.93%
No Dogs Allowed' area	103	47.47%
Picnic benches	103	47.47%
Woodland area	98	45.16%
Refreshments van/café	85	39.17%
Area for events	80	36.87%

Play area:	Frequency	Percent
Play equipment	39	90.70%
Toilets	36	83.72%
No Dogs Allowed' area	28	65.12%
Large grassed area	25	58.14%
Picnic benches	25	58.14%
Seating	25	58.14%
Refreshments van/café	22	51.16%

Trees	22	51.16%
Accessible entrances/pathways	20	46.51%
Area for events	18	41.86%
Flower beds/landscaped area	18	41.86%
Staff presence e.g. park keeper	17	39.53%
Pond or stream	16	37.21%
Woodland area	15	34.88%
Kick-about area with basketball hoop	14	32.56%

Urban woodland	Frequency	Percent
Woodland area	39	78.00%
Pond or stream	35	70.00%
Seating	32	64.00%
Trees	32	64.00%
Flower beds/landscaped area	30	60.00%
Staff presence e.g. park keeper	30	60.00%
Toilets	30	60.00%
Large grassed area	27	54.00%
Accessible entrances/pathways	24	48.00%
Picnic benches	24	48.00%
Bushes/shrubs	23	46.00%
'Quiet' area	20	40.00%
'No Dogs Allowed' area	19	38.00%
Refreshments van/cafe	18	36.00%
Information/notice board	16	32.00%

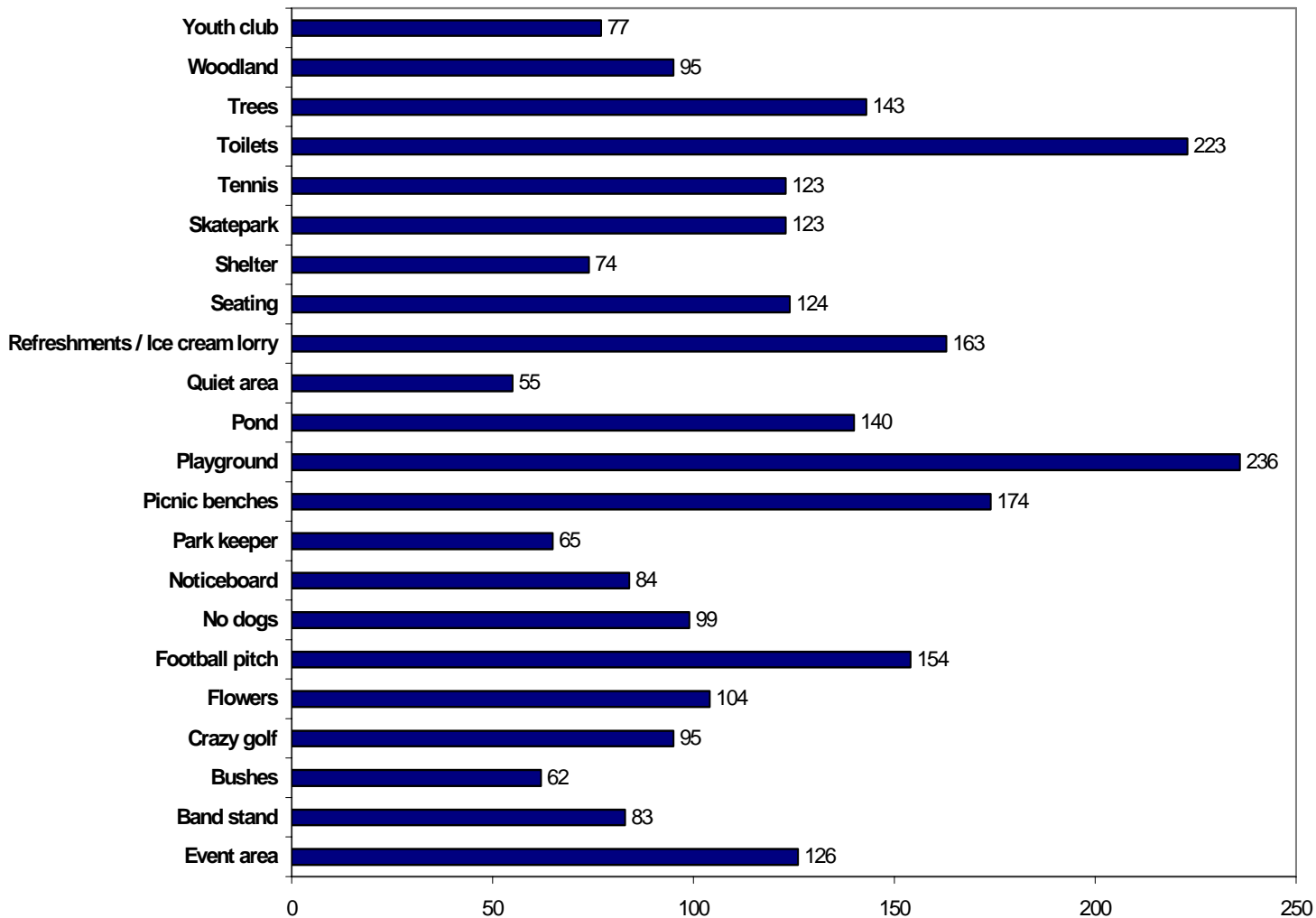
Natural area	Frequency	Percent
Pond or stream	37	77.08%
Trees	33	68.75%
Seating	32	66.67%
Woodland area	32	66.67%
Bushes/shrubs	29	60.42%
Staff presence e.g. park keeper	29	60.42%
Toilets	29	60.42%
Large grassed area	28	58.33%
Flower beds/landscaped area	23	47.92%
Picnic benches	23	47.92%
'Quiet' area	23	47.92%
Accessible entrances/pathways	22	45.83%
Refreshments van/cafe	19	39.58%
'No Dogs Allowed' area	16	33.33%
Information/notice board	15	31.25%

Sports space	Frequency	Percent
Seating	25	71.43%
'No Dogs Allowed' area	21	60.00%
Toilets	21	60.00%
Large grassed area	20	57.14%
Picnic benches	20	57.14%
Staff presence e.g. park keeper	20	57.14%
Trees	19	54.29%
Accessible entrances/pathways	17	48.57%
Play equipment	17	48.57%
Bushes/shrubs	16	45.71%
Flower beds/landscaped area	14	40.00%

Grassy, informal spaces	Frequency	Percent
Large grassed area	79	71.17%
Trees	77	69.37%
Seating	73	65.77%
Toilets	72	64.86%
Pond or stream	66	59.46%
Woodland area	66	59.46%
Picnic benches	61	54.95%
Accessible entrances/pathways	57	51.35%
Flower beds/landscaped area	55	49.55%
Staff presence e.g. park keeper	53	47.75%
Bushes/shrubs	50	45.05%
'No Dogs Allowed' area	45	40.54%
'Quiet' area	43	38.74%
Information/notice board	41	36.94%

Larger parks/estates	Frequency	Percent
Toilets	111	82.84%
Accessible entrances/pathways	86	64.18%
Picnic benches	80	59.70%
Pond or stream	80	59.70%
Seating	78	58.21%
Woodland area	77	57.46%
Staff presence e.g. park keeper	71	52.99%
Flower beds/landscaped area	70	52.24%
Large grassed area	70	52.24%
Trees	66	49.25%
No Dogs Allowed' area	64	47.76%
Play equipment	61	45.52%
Refreshments van/café	61	45.52%

Results from the CD survey with children and young people: *Items placed in the 'ideal park':*





## Priority spaces

### **Summary**

When considering these results it is important to recognise that participants are being led by a survey text or by group facilitators and as a result not all results are directly comparable. Within focus groups participants were introduced to 5 different types of space that the Parks and Green Space Strategy is considering: formal space, informal space, children and young people's space, natural green space and sports space (fixed and seasonal). The Strategy recognises that these 5 types have distinct characteristics and can co-exist on one site. Participants of focus groups are aware of this and have responded accordingly. Participants of the Strategy general survey and the CD survey with young people may be considering different *sites* when responding so a formal park/garden area could contain a sports space and children and young people's space, as defined by the Strategy.

Analysis of the data from the different collection methods employed reveals a complex picture with regard to how and why people prioritise different spaces and types of space.

There is a clear indication that the public spend most time visiting 'formal parks'. This result is repeated when the results are analysed for different groups including women, older people, Black and minority ethnic people and disabled people – all groups preferring this type of green space. The second space people spend most time in is 'grassy, open, informal space'. There is no clear third most popular green

space but one site, Ashton Court, is the space 10% of respondents to the P&GSS general survey visited most.

When respondents were asked which sites they visited most many different sites across Bristol were named. However two sites were clear favourites – the Downs (Clifton and Durdham) and Eastville Park. It is likely that in the P&GSS general survey the popularity of the Downs is contributing to the finding that 'grassy, open, informal space' is the second most visited type. The majority of the top sites were examples of Bristol's Victorian parks.

Research with young people (aged 8-11 years) through the CD survey showed that 'parks' were the type of outdoor space they visited most often. In order of popularity the types of outdoor spaces most visited by this group of young people were:

1. A park;
2. In my street;
3. A grassy area;
4. A woodland;
5. A sports space;
6. A play area;
7. A natural area.

However the third most popular choice was Hengrove Play Park and the fourth site was Blaise Estate. As Blaise has a popular play area the results may suggest that spaces with fixed play equipment are more popular than the rank order above suggests. The choice of 'in my street' as the second most popular visited space highlights the importance of local space i.e. space close to children's homes. For Bristol Parks an assumption might be that very small areas of green space

that are associated with streets may contribute to street space.

At focus group sessions in different parts of the city participants were asked which was their favourite type of space according to the 5 types recognised by the Strategy. The results clearly showed that natural green space – space that is good for wildlife – was the favourite type of space. However this didn't correlate to the type of space people used most often or wanted close to their home. In order of popularity participants voted for:

1. Natural green space;
2. Informal space;
3. Children and young people's space;
4. Formal space
5. Seasonal sports space;
6. Fixed sports space.

This suggests that participants get a quality of experience from visiting natural green space that they value highly but don't feel the need to have as often and are willing to travel longer distances to experience.

At focus groups sessions participants were asked to make decisions on both the level of provision of the five different types of space (expressed as an area of space each person in Bristol should have access to) and the quality at which they should be maintained. Almost 100 people took part in the exercise. Participants' options were restricted so as to attempt to reveal true preferences. The results showed that participants preferred to see both the provision and quality of children and young people's space increase from what is currently available in the city at the expense of other types of

space. The preference for an increase in provision was most noticeable – indicating that people would prefer over 3 times as much play provision (expressed as equipped play area) than currently available. This was despite being aware of the high cost of providing this type of space.

The preferred levels of provision for natural green space and seasonal sports space remained as currently available. Participants preferred a 40% decrease in the provision of formal green space from what is currently available. As the cost of providing this space was high it was mainly this reduction that supported an increase in children and young people's space. Respondents also preferred a 68% increase in the current provision of fixed sports space.

In terms of quality, participants preferred to decrease the quality of natural green space the most with other decreases for fixed sports space and informal space. As mentioned there was a preference for a substantial increase in the quality of children and young people's space and small increases in formal space and seasonal sports space.

## Priority spaces: Supporting evidence

Results from the P&GSS General Survey: *Type of space most time spent in:*

	Number	Percentage
Local formal park/public garden	217	33.9%
Local play area	43	6.7%
Urban woodland area	50	7.8%
Natural/wildlife area	48	7.5%
Grassy, open, informal space	111	17.3%
Sports space/playing field	35	5.5%
Ashton Court Estate, Bristol	62	9.7%
Blaise Castle Estate, Bristol	51	8.0%
Hengrove Play Park, Bristol	5	<1.0%
Royal Victoria Park, Bath	16	2.5%
I don't visit any outdoor places	3	<1.0%
Base	641	100.0%

Results from area-based focus groups: *Average provision by type, quality preference by type:*

Type of space	Current provision M <sup>2</sup>	Average from testing M <sup>2</sup>	Percentage change
formal space	3	<b>1.30</b>	- 43%
Informal space	7	<b>7.91</b>	+ 13%
natural green space	12.25	<b>11.27</b>	- 8%
Children's space	0.25	<b>0.79</b>	+ 316%
sports – fixed	0.5	<b>0.85</b>	+ 68%
sports – seasonal	2	<b>1.96</b>	- 2%
<b>Area of land sold</b>	<b>0</b>	<b>0.91</b>	
<b>Level maintained at</b>			
formal space	2	<b>2.21</b>	where 1 = poor
Informal space	2	<b>1.94</b>	where 2 = moderate
natural green space	2	<b>1.78</b>	where 3 = good
Children's space	2	<b>2.78</b>	where 4 = excellent
sports – fixed	2	<b>1.84</b>	
sports – seasonal	2	<b>2.13</b>	

Results from area-based focus groups: *Favourite spaces by type:*

	formal space	informal space	sports - fixed	sports - seasonal	children's space	Natural Green Space
Priority ranking	4	2	6	5	3	1
Priority score	217	261	158	164	229	299

Note:

- All participants were asked to give a priority ranking for the different types of green space, based on their own personal preferences. For each person the favourite space was given a score of 6 points, second favourite 5 points and so on with their least favourite receiving a score of 1 point.
- It is IMPORTANT to note that respondents during the testing stage have shown that a shorter willingness to walk threshold does not necessarily mean that type of space is more popular. Natural green space is the favourite type of space but people are willing to walk further to it than to a play area, formal or informal space.

Results from the P&GSS General Survey: *Female named favourite outdoor spaces:*

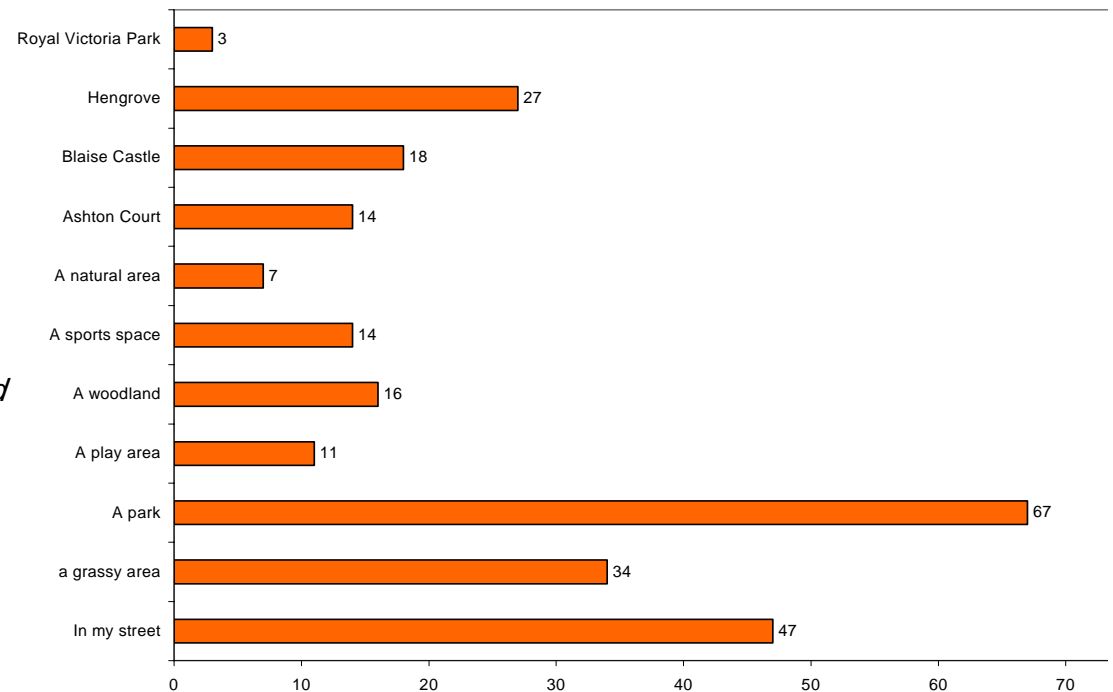
Outdoor Space	Frequency
The Downs	27
Eastville Park	17
St George's Park	11
St Andrews Park	10
Purdown	8
Victoria Park	5
Stoke Lodge	5
St Paul's Green	5
Redland Green	5

Results from the P&GSS General Survey: *Male named favourite outdoor spaces:*

Outdoor Space	Frequency
The Downs	13
Eastville Park	12
St Agnes Park	8
St Pauls park	7
Victoria Park	6
St George's Park	5
St Andrew's Park	5

Results from the CD survey with children and young people:  
*"Think about the outdoor space you visit – which is the one you spend most time in?"*

No answer – 35



## Distance thresholds

### **Summary**

There were two methods used to accurately gather responses on participants' willingness to travel to different types of spaces – expressed as minutes. These were the P&GSS general survey and the different focus groups - area-based, with young people and communities of need. At focus groups facilitators were able to use maps of the areas in which participants lived and circles representing different distances which could be overlaid on the map. The diameter of the circles was calculated using information provided by the National Playing Fields Association on how long it takes the 'average' person to travel set distances. Walking was the only means of travel measured at the focus groups.

The exercise with the map and distance circles involved nearly 100 people. It took place with residents in Fishponds, Southville, Horfield, Southmead, St Pauls, Withywood and Hengrove. It also took place with the Women's Forum, Councillors, Bristol Physical Access Chain, the Older People's Forum and three groups of young people including the Young People's Forum. The results between groups can be quite different but the variety of different needs represented by the participant sample helps make the overall sample representative and final distance thresholds credible.

From focus groups the average distance people were willing to walk to different types of space was:

Informal space:	12.7 mins
Children and young people's space:	13.4 mins

Formal space:	15.6 mins
Natural green space:	16.1 mins
Fixed sports space:	16.5 mins
Seasonal sports space:	16.9 mins

Cross-analysis with other data informs that participants are not necessarily expressing a preference for different types of space through the distance they are willing to walk – at least the results should not be interpreted this way.

Informal space was the type of space people wanted closest to their home and this may reflect the fact that for many participants this is the type of space which is currently close to their home e.g. in the form of small corner plots as well as larger sites.

The facilitators felt the choice of a distance threshold to children and young people's space within the Strategy needs to be very considered. The average time through focus groups is 13.4 mins. However it is likely that this has been increased by children and young people themselves (who are willing to travel significantly longer) and older people who don't use these spaces often. For park users that take younger children to this type of space the distance would be shorter – this is reflected in the Strategy general survey.

The response from Bristol Physical Access Chain whose members have mobility impairments was commensurate with the average apart from for sports space. It may be that these participants use this facility less frequently and hence are not so concerned about it being available locally.

The response from young people under 19 years showed that they are willing to travel significantly longer to children and young people's space but significantly shorter distances to three types of space: formal space, fixed sports space and natural green space. Analysis of other data indicates that young people's use of green space changes significantly with age – with older young people using it as a place to hang out and play football/sport. It might be that those under 19 years of age that responded to the P&GSS general survey were not frequent users of play facilities.

The P&GSS general survey demonstrates that the type of space that people are willing to walk the shortest distance to is a play area. 50% of those that completed the survey are not willing to walk more than 10 minutes and this goes up to 71% not willing to walk more than 15 minutes. The findings are summarised below:

	Not more than 5 mins %	Not more than 10 mins %	Not more than 15 mins %
Formal park	12.5	31.6	55.6
Play area	20.7	49.4	71
Woodland area	3.4	13.5	33.7
Natural area	3.4	13.1	32.4
Grassy, informal area	13.9	37	55.1
Sports space	15.8	37.1	60.1

Respondents are willing to walk furthest to urban woodland areas and natural areas – both having virtually identical response profiles. After play areas, sports space is the type of space respondents are less willing to walk long distances

to – 60% saying they wouldn't walk more than 15 minutes. In the Strategy general survey by far the most popular type of space was a formal park/garden but the survey also demonstrates that people are willing to walk further to this type of space than play areas, sports space and informal space. The fact that more people (as a percentage of those providing a response for that space) want to drive to play areas and sports spaces suggests that there are very practical reasons why people won't walk as far e.g. having young children or carrying equipment/clothing.

The Strategy general survey also elicited responses for driving, cycling or taking a bus to different spaces. By far the most common of these was driving. The findings are summarised below:

	Not more than 5 mins %	Not more than 10 mins %	Not more than 15 mins %	Not more than 20 mins %
Formal park	6.6	18.6	34.1	51.1
Play area	12.3	28.2	48.7	65
Woodland area	2.9	11.6	26	45.8
Natural area	1.2	7.2	19.8	41.2
Informal area	6.7	22.8	40.2	57.5
Sports space	10.1	24.3	44	63

The results for driving follow the same pattern as for walking. Respondents are willing to drive furthest to urban woodland areas and natural areas and the least distance to play areas and sports spaces. The pattern is repeated for those that travel by bus and those that cycle.

The two sets of results, from focus groups and from the Strategy general survey, are not readily comparable. Respondents at focus groups were introduced by facilitators to a description of the different types of space and of the concept of them working together on one site. The survey respondents didn't have this. A rude judgement on how the two sets of results might compare with regard to willingness to walk is given below:

	Focus group	P&GSS survey
Informal space:	12.7 mins	15 mins
Children and young people's space:	13.4 mins	10-12 mins
Formal space:	15.6 mins	15 mins
Natural green space:	16.1 mins	15+ mins
Fixed sports space:	16.5 mins	15 mins
Seasonal sports space:	16.9 mins	15 mins

The only result that appears to be contradictory is that for sports space. The focus group research shows that respondents are willing to walk further to this type of space than other types – an average of 16.7 mins. However 60% of respondents to the Strategy general survey wouldn't want to walk for more than 15 minutes. The result from the Strategy general survey may be a product of the population sample i.e. of an age that are likely to do sport or that the type of person that would readily complete a survey on parks and green spaces is more likely to be engaged in sporting activity. We know that there is an overrepresentation of older people in the response sample. As the focus group research engaged with a broad range of people, including

those that do not currently use parks and green spaces, this is more likely to be a result more representative of the Bristol population.

The average (mean) taken from focus groups is the more informed response. However the sample population is only 10% of the Strategy general survey. A draft recommendation from facilitators carrying out the research process would be for distance thresholds of a *maximum* of:

- 15 mins for formal space;
- 13 mins for informal space;
- 16 mins for sports spaces;
- 12 mins for children's and young people's space; and
- 18 mins for natural green space.



## Distance thresholds: Supporting evidence

Results from area-based focus groups: *Willingness to walk (distance thresholds) to each type of space:*

	Formal space	Informal space	Sports - fixed	Sports - seasonal	Children's space	Natural Green Space
<b>Overall average (mean) from 99 respondents</b>	<b>15.6 mins</b>	<b>12.7 mins</b>	<b>16.5 mins</b>	<b>16.9 mins</b>	<b>13.4 mins</b>	<b>16.1 mins</b>
<b>Average from young people (&lt;19)</b>	7.6 mins	13.7 mins	11.2 mins	14.7 mins	19.9 mins	13.4 mins
<b>Average from older people (60+)</b>	20 mins	14.2 mins	16.7 mins	15 mins	15.7 mins	17.1 mins
<b>Bristol Physical Access Chain</b>	15 mins	13 mins	20.4 mins	20.5 mins	15.3 mins	16.9 mins

Results from the P&GSS General Survey: *“What is the maximum amount of time you would be willing to spend travelling to get to the following types of space?”*

<b>Formal park/public garden</b>	Not more than 2 mins	Not more than 5 mins	Not more than 10 mins	Not more than 15 mins	More than 15 mins	Not more than 20 mins	More than 20 mins	Base
Walking	2.7%	9.8%	19.1%	24.0%	<b>44.4%</b>	N/a	N/a	450
Cycling	N/a	10.6%	14.1%	21.2%	N/a	14.1%	<b>40.1%</b>	142
Taking a bus	N/a	7.7%	11.3%	13.4%	N/a	16.2%	<b>51.4%</b>	142
Driving	N/a	6.6%	12.0%	15.5%	N/a	17.0%	<b>48.9%</b>	317

<b>Play area</b>	Not more than 2 mins	Not more than 5 mins	Not more than 10 mins	Not more than 15 mins	More than 15 mins	Not more than 20 mins	More than 20 mins	Base
	Walking	6.8%	13.9%	28.7%	21.6%	<b>29.1%</b>	N/a	N/a
Cycling	N/a	13.2%	18.2%	24.0%	N/a	13.2%	<b>31.4%</b>	121
Taking a bus	N/a	13.3%	16.7%	18.9%	N/a	14.4%	<b>36.7%</b>	90
Driving	N/a	12.3%	15.9%	20.5%	N/a	16.4%	<b>35.0%</b>	220

<b>Urban woodland area</b>	Not more than 2 mins	Not more than 5 mins	Not more than 10 mins	Not more than 15 mins	More than 15 mins	Not more than 20 mins	More than 20 mins	Base
	Walking	1.2%	2.2%	10.1%	20.1%	<b>66.3%</b>	N/a	N/a
Cycling	N/a	3.5%	9.9%	21.1%	N/a	17.6%	<b>47.9%</b>	142
Taking a bus	N/a	5.2%	6.7%	12.7%	N/a	17.9%	<b>57.5%</b>	134
Driving	N/a	2.9%	8.7%	14.4%	N/a	19.9%	<b>54.2%</b>	312

<b>Natural/wildlife area</b>	Not more than 2 mins	Not more than 5 mins	Not more than 10 mins	Not more than 15 mins	More than 15 mins	Not more than 20 mins	More than 20 mins	Base
	Walking	1.2%	2.2%	9.7%	19.3%	<b>67.6%</b>	N/a	N/a
Cycling	N/a	4.9%	8.5%	22.5%	N/a	14.8%	<b>49.3%</b>	142
Taking a bus	N/a	6.1%	4.6%	10.7%	N/a	19.1%	<b>59.5%</b>	131
Driving	N/a	1.2%	6.0%	13.6%	N/a	18.6%	<b>59.8%</b>	301

<b>Grassy, open, informal area</b>	Not more than 2 mins	Not more than 5 mins	Not more than 10 mins	Not more than 15 mins	More than 15 mins	Not more than 20 mins	More than 20 mins	Base
Walking	4.7%	9.2%	23.1%	18.1%	<b>44.9%</b>	N/a	N/a	425
Cycling	N/a	12.1%	11.4%	20.7%	N/a	16.4%	<b>39.3%</b>	140
Taking a bus	N/a	9.9%	14.0%	14.9%	N/a	14.9%	<b>46.3%</b>	121
Driving	N/a	6.7%	16.1%	17.4%	N/a	17.4%	<b>42.5%</b>	299

<b>Sports space/playing field</b>	Not more than 2 mins	Not more than 5 mins	Not more than 10 mins	Not more than 15 mins	More than 15 mins	Not more than 20 mins	More than 20 mins	Base
Walking	5.5%	10.3%	21.3%	23.0%	<b>39.9%</b>	N/a	N/a	291
Cycling	N/a	12.9%	11.2%	22.4%	N/a	20.7%	<b>32.8%</b>	116
Taking a bus	N/a	11.6%	11.6%	18.9%	N/a	18.9%	<b>38.9%</b>	95
Driving	N/a	10.1%	14.2%	19.7%	N/a	18.8%	<b>37.2%</b>	218

Summary – results from the P&GSS General Survey: *“How far would you be willing to walk to the following types of space?”*

	Formal space	Informal space	Sports - fixed	Sports - seasonal	Children's space	Natural Green Space
<b>From P&amp;GSS survey - % of those that would be willing to walk more than 10 minutes</b>	68%	63%	63%	63%	51%	86%
<b>From P&amp;GSS survey - % of those that would be willing to walk more than 15 minutes</b>	44%	45%	40%	40%	29%	66%

Notes:

- The average (mean) taken from the testing process is the more informed response. However the sample population is only 10% of the P&GSS survey.
- It is not possible to directly compare the survey and testing process. However, the 2 techniques are complimentary.

## Quality thresholds

### **Summary**

For the assessments involving community park groups there is a clear overall trend of Bristol Parks scoring sites more generously through its process. This difference is a minimum of 10% but an average of 25%, or one point – the difference between moderate and good, poor and moderate. However, within this overall trend it is difficult to find patterns to learn from.

The consistency with community park groups scoring provision/regime, condition and maintenance of grass lower may well be down to a higher expectation amongst site users but may also be due to a difference in levels of horticultural knowledge, and expectation through that knowledge.

Community park groups scored only one site higher for 'setting and containment of site'. This may suggest that it is not appropriate to make an objective judgement of how a site works with its wider environment. Local, subjective knowledge could be more appropriate.

The lack of symmetry between assessors when scoring maintenance of facilities could be due to differences in local aspirations.

For the assessments carried out by members of Bristol Physical Access Chain (BPAC) it is more difficult to see useful patterns or trends to learn from. The 'pattern' of BPAC members scoring across the range of poor to excellent for the

same facility perhaps highlights that different types and degree of impairment or health problem will govern users perceptions of quality and access.

There was consistency with BPAC assessors scoring the quality of footpaths for disabled access considerably lower. This may be an indicator of a fundamental problem of Bristol Parks officers not having sufficient understanding of access needs to give an appropriate assessment of quality. This would need further research.

## Quality thresholds: Supporting evidence

A total of 10 parks and green spaces were assessed for quality. Eight by community park groups and two by Bristol Physical Access Chain (BPAC).

Eight parks assessed for quality by community park groups:

- Greville Smyth Park;
- Eastville Park;
- Hillfields Rec;
- Old Sneyd Park NR;
- Redland Green;
- Mina Road Park;
- Victoria Park;
- Doncaster Road Park.

Two parks assessed by BPAC:

- St Annes Park;
- and St George Park.

Two additional were assessed but have not been included here as the Bristol Parks site assessment is not complete on these sites at the time of writing. These sites are Charlton Road open space and Badocks Wood, both in the Southmead area of the city.

The assessments took place during May, June and early July 2005 and the criteria assessed were:

1. Setting and containment of site;
2. Entrances;
3. Peripheral boundaries;
4. Internal boundaries

5. Access paths and hard surfaces;
6. Grass areas;
7. User experience;
8. Signage and interpretation;
9. Site furniture;
10. Overall impressions.

The forms used were closely based on those used by Bristol parks officers in Getting A Measure Of Parks (GAMOP) with some additional explanation of terms and guidance on scoring. An additional comment box was included for each criteria.

## Results from community park groups

A sample of observations using the average scores for each site are given below. Each criteria was given a score of 1 for poor, 2 for moderate, 3 for good and 4 for excellent.

- The overall quality score by users was lower than the Bristol Parks assessment for six of the eight sites assessed. These were – Sneyd Park, Mina Road, Redland Green, Eastville Park, Hillfields RG, Greville Smyth. The smallest difference in scores was 11% and the highest was 40%.
- The provision/regime, condition and maintenance of grass was consistently scored lower by community park groups, with provision/regime scoring lower for five from seven eligible sites.

- The setting and containment of the site was scored lower by community park groups on five sites – only one was scored higher.
- Maintenance of facilities as a whole was scored lower by community park groups on five sites and higher on three sites.
- Community park groups scored five sites lower for safety 'feel' and five sites higher. This lack of symmetry with Bristol Parks suggests there is a difficulty with 'objective' assessment providing accurate scores for this criteria and hence guiding policy.

Community park groups' scores that were one point higher or lower than Bristol Parks were very common. However there are many instances of scores being 2 or 3 points higher or lower.

### **Results from Bristol Physical Access Chain**

The quality assessments of St Annes Park and St George Park carried out by members of BPAC took place on one day in May and were facilitated by Bristol City Council's Equalities and Inclusion team. The sites were assessed by 6 members, all of who had prior experience of assessing access for disabled people in green spaces. All members had physical impairments that led them to use a wheelchair or motorised scooter for the assessment.

### St Annes Park

- Overall the park was scored lower for quality by BPAC than by Bristol Parks. Of the 30 scores able to be given, only 7 scored higher (using an average).
- On six of the assessment criteria, quality scores ranged from poor to excellent by BPAC. These were location of entrances, maintenance of peripheral boundaries, design of internal boundaries, condition of grass areas, abuse 'feel', condition of furniture.
- The quality of the footpaths for disabled access was scored lower by BPAC members – 4 members scoring 'poor'. GAMOP scored 'good'.

Repeated comments that were made by BPAC members were:

- ❑ There isn't enough seating in the park.
- ❑ The lack of toilet provision means it is a difficult site for disabled people to use.
- ❑ Signage to the park and within it is very poor.
- ❑ The entrances are particularly poor for access by wheelchair users and only the main entrance via the car park is properly accessible.
- ❑ There is no disabled car parking space in the car park.
- ❑ The existing seating needs improving – base settings need to be level and wider.

### St George Park

- Overall the park was scored significantly higher for quality by BPAC than by Bristol Parks.
- On 5 of the assessment criteria, quality scores ranged from poor to excellent by BPAC. These were location

of entrances, maintenance of peripheral boundaries, condition of internal boundaries, condition of access paths, maintenance of access paths and condition of furniture.

- The quality of the footpaths for disabled access was scored lower by 3 of 4 BPAC members.

Comments that were made by BPAC members include:

- "I felt a bit nervous going round the lake as there was nothing to stop you falling in!"
- there are two lots of toilets on site and neither of them are accessible and cannot be used by many disabled people with a physical impairment.



## Local Need Area report

### **Summary**

Local Need Areas are distinct areas of the city created during the development of the Strategy to ensure it is in line with Planning Policy Guidance 17. The areas are a basis for action planning the improvement of green spaces and establishing appropriate links between green spaces and green space improvement plans. The boundaries of the 15 areas created follow barriers to access (rivers, major roads) and ward boundaries.

Research information gathered from methods outside of Quality of Life survey data is not sufficient to enable a comparison between Local Need Areas. A greater response to the research would have been required, especially from certain areas of the city; in particular Hartcliffe, Withywood, Hengrove and Stockwood.

Quality of Life survey data can be expressed in ward areas and allow comparison between them. Where ward boundaries correlate with Local Need Area boundaries then some spatial comparison of 'satisfaction levels' in Local Need Areas is possible – but more work is required for this to be accurate. Refer to the 'Quality of Life Report' section. However, the grouping of data into Local Need Areas results in a weakening of its significance and its role in informing decision-making both locally and citywide. Local Need Areas combine data from smaller areas of the city with very different profiles in terms of green space quality, population density and demography.

This can be seen highlighted using the assessment of quality data gathered through Getting a Measure of Parks. Local Need Area 7 has three wards and an average quality of 1.8 – between poor and moderate, close to moderate. However looking at quality at ward level the average varies from 1.4 in Lockleaze and 2.2 in Redland, a significant difference. There is a similar finding with Local Need Area 6 where, when looking at quality at ward level, the average varies from 1.9 in Ashley and 2.8 in Cotham.

An analysis of Quality of Life 2004 data also suggests that measuring satisfaction does not provide reliable data for *some* criteria. A comparison of satisfaction of amount and accessibility with regard to parks and green spaces does not follow what is known 'on the ground', especially with regard to amount. There is also a clear trend that if respondents are satisfied with one measure they are satisfied with all of them.

Bearing mind the comments about the potential reliability of the data, there are a number of differences between some of the local need area results. With regard to respondents willingness to walk to different types of green space:

- No local need area had a preferred walking time of less than 10 minutes;
- Respondents in LNA 11,12 and 13 (Henbury, Kingsweston and Avonmouth combined) were generally willing to walk longer distances (over 15 minutes) to green spaces than other areas;
- Residents in LNA 5 (Frome Vale, Eastville and Hillfields) were not willing to walk more than 10

minutes to three types of green space (though the population sample was small) – woodland areas, natural areas and informal areas. In all other LNAs respondents were willing to walk longer than 15 mins to woodland areas and natural areas;

- Residents in LNA 4 (St George East and St George West) were also not willing to walk more than 10 minutes to play areas, sports space and informal areas.

With regard to preferred methods of travel to parks and green spaces:

- In local need area 6 the frequency of method of travel is evenly distributed between walking, car, cycling and bus.
- Residents in LNA 6 walk to a green space significantly less than residents in other areas;
- Residents in LNA 9 (Clifton, Clifton East, Stoke Bishop) are more likely to walk to a green space;
- Residents in Henbury, Kingsweston and Avonmouth are more likely to use a bus to get to green spaces;
- Residents in LNA 5 (Frome vale, Eastville and Hillfields) are more likely to use a car to travel to a green space.

With regard to favourite types of space:

- Residents in LNA 9 (Clifton, Clifton East, Stoke Bishop) chose an informal space as the place they spend most time in. The presence of the Downs is likely having an effect on this result;
- Ashton Court was the second most visited space in LNA 2 (Southville, Bedminster and Bishopsworth) and LNA 14 Windmill Hill, Knowle and Filwood.

- Blaise Castle Estate was the place residents in LNAs 11,12 and 13 (Henbury, Kingsweston and Avonmouth combined) spend most time in;
- Residents in LNA 5 (Frome vale, Eastville and Hillfields) chose an urban woodland as the second place they spend most time in. It may be that the proximity of the Frome Valley is influencing this choice.

With regard to the top five improvements respondents would make to their favourite green space:

- 'keep it cleaner – get rid of litter and dog mess' is the priority improvement for LNAs 2, 4, 5, 6, 8, 9 and 10;
- 'stopping vandalism' is the priority improvement for LNAs 11, 12 & 13 (combined) and 14;
- 'better play equipment' is a higher priority in LNAs 7, 6 and 4 than other areas;
- 'better lighting' is a top five priority in LNAs 5 and 14. In LNA 5 (Frome vale, Eastville and Hillfields) this is alongside other priorities of having a park keeper and improving safety, suggesting that safety overall is a key issue here;
- 'improving safety' as a priority came up in LNAs 5 (Frome vale, Eastville and Hillfields) and 7 (Lockleaze, Bishopston and Redland);
- LNA 7 (Lockleaze, Bishopston and Redland) was the only area where the priority improvement was 'nothing' i.e. no improvement needed;
- 'improve maintenance' was a top five priority in four LNAs.

## Local Need Area Report: Supporting evidence

The Parks and Green Space Strategy considers Local Need Areas; a division of the city into 15 areas the boundaries of which are significant barriers to access e.g. major roads, watercourses, railway lines and steep hills. The Strategy will state that each Local Need Area should contain an example of every type of space – formal, informal, natural green, sports (seasonal and fixed) and children and young people’s space.

Results from the P&GSS General Survey: Analysis based on 656 respondents (for items labelled n/a there is not enough participant response to provide a credible figure).

LNA	Wards	Max walking distance (mins)	% of those satisfied	Most popular means of transport	Types of space spent most time in	5 most important improvements	Comments
1	Hartcliffe and Withywood	Not enough response for meaningful analysis					
2	Southville Bedminster Bishopsworth	Formal park – 15 max Play area – 10 max Woodland area – 15+ Wildlife area – 15+ Informal space – 15+ Sports space – 15 max	53	Walking – 72% Car – 34% Bus – n/a Cycling – 17%	Formal park – 36% Ashton court – 19%	Keep it cleaner Flowerbeds/trees/shrubs Park keeper Stop vandalism Improve maintenance	LNA is close to Ashton Court
3	Brislington W Brislington E	Formal park – 10 max Play area – 15 max Woodland area – 15+ Wildlife area – 15+ Informal space – 15+ Sports space – 15+	80	Walking – 73% Car – 53% Bus – n/a Cycling – n/a	Response too low for meaningful results	Response too low for meaningful results	
4	St George W St George E	Formal park – 15 max Play area – 10 max Woodland area – 15+ Wildlife area – 15+ Informal space – 10 max Sports space – 10 max	70	Walking – 90% Car – 50% Bus – n/a Cycling – n/a	Formal park – 65%	Keep it cleaner Stop vandalism Better play equipment A place for older kids Park keeper No dogs area	LNA willing to walk shortest max distances overall

LNA	Wards	Max walking distance (mins)	% of those satisfied	Most popular means of transport	Types of space spent most time in	5 most important improvements	Comments
5	Frome vale Eastville Hillfields	Formal park – n/a Play area – n/a Woodland area – 10 max Wildlife area - 10 max Informal space – 10 max Sports space – 15+	72	Walking – 91% Car – 63% Bus – 34% Cycling – 28%	Formal park – 44% Urban woodland – 22%	Keep it cleaner Park keeper Stop vandalism Improve safety Better lighting	2 <sup>nd</sup> highest % of walkers  2 <sup>nd</sup> highest % of car users
6	Cabot Easton Ashley Lawrence Hill Cotham	Formal park – 15 max Play area – 10 max Woodland area – 15+ Wildlife area – 15+ Informal space – 15+ Sports space – 15 max	42	Walking – 54% Car – 32% Cycling – 25% Bus – 22%	Formal park – 28% Informal space – 13% Play area – 8%	Keep it cleaner Stop vandalism Better play equipment Park keeper Improve maintenance	
7	Lockleaze Bishopston Redland	Formal park – 10 max Play area – 15 max Woodland area – 15+ Wildlife area – 15+ Informal space – 10 max Sports space – 15 max	80	Walking – 88% Car – 50% Bus – n/a Cycling – 28%	Formal park – 35% Informal space – 23%	Nothing Stop vandalism Better play equipment Improve safety Keep it cleaner	The only LNA in which a park keeper isn't a priority improvement
8	Southmead Horfield	Formal park – 15+ Play area – 15 max Woodland area – 15+ Wildlife area – 15+ Informal space – 15 max Sports space – 15 max	83	Walking – 74% Car – 74%	Formal park – 22% Informal space – 22%	Keep it cleaner Stop vandalism Park keeper No dogs area Flowerbeds/trees/shrubs	Highest % of car users
9	Clifton Clifton East Stoke bishop	Formal park – 15+ Play area – 15 max Woodland area – 15+ Wildlife area – 15+ Informal space – 15 max Sports space – 15 max	83	Walking – 95% Car – 55% Bus - 18% Cycling – 18%	Informal space – 35% Sports space – 17%	Keep it cleaner Stop vandalism Nothing Park keeper Improve maintenance	Highest % of walkers  Respondents answers dominated by locality of the Downs

LNA	Wards	Max walking distance (mins)	% of those satisfied	Most popular means of transport	Types of space spent most time in	5 most important improvements	Comments
10	Henleaze Westbury	Formal park – 15 max Play area – 10 max Woodland area – 15+ Wildlife area – 15+ Informal space – 15 max Sports space – 15+	76	Walking – 76% Car – 60% Bus – n/a Cycling – n/a	Formal park – 28% Informal space – 24%	Keep it cleaner Stop vandalism Park keeper Nothing	
11, 12 & 13	Henbury Kingsweston Avonmouth	Formal park – 15+ Play area – n/a Woodland area – 15+ Wildlife area – 15+ Informal space – 15+ Sports space – 15+	77	Walking – 65% Car – 58% Bus – 44% Cycling – n/a	Blaise estate – 52% Informal space – 17%	Stop vandalism Park keeper Keep it cleaner Nothing Info board	Highest % of bus users  LNA is close to Blaise Estate  LNA willing to walk longest max distances overall
14	Windmill hill Knowle Filwood	Formal park – 15 max Play area – 15 max Woodland area – 15+ Wildlife area – 15+ Informal space – 15 max Sports space – 15 max	64	Walking – 83% Bus – 40% Car – 36% Cycling – 28%	Formal park – 45% Ashton court – 11%	Stop vandalism Park keeper Keep it cleaner Better lighting Improve maintenance	2 <sup>nd</sup> highest % of bus users  LNA is close to Ashton Court
15	Hengrove Stockwood	Not enough response for meaningful analysis					

Work for the Parks and Green Space Strategy has involved an objective assessment of the quality of all sites. The process was called Getting a Measure of Parks (GAMOP). Quality was assessed for a full range of park criteria – park furniture, grass, boundaries, information, play equipment, trees etc. A measure of quality was made for: the provision of an item i.e. whether it is there and in the right quantities and is appropriate for the site; for its condition and its maintenance i.e. has the grass been mown, litter picked up etc.

The data shown here is only concerned with the measure of quality through provision. The reasoning for this is that it best reflects the services made available by Bristol Parks over the long term. Comparing quality through condition or maintenance may result in a comparison of the very short term, or the temporary.

GAMOP: *a measure of real quality (through provision) by ward – wards with the lowest quality:*

Quality - provision:

- 1 = poor                      3 = good
- 2 = moderate              4 = excellent

Ward	Local Need Area	Average quality – provision
Lockleaze	7	1.4
Filwood	14	1.5
Avonmouth	11/12/13??	1.6
Hillfields	5	1.6
Horfield	8	1.6
WHIN	14	1.6

Results from the P&GSS and GAMOP: *a comparison of measured quality (through provision) with user satisfaction by Local Need Area:*

Local Need Area	Average quality – provision	Satisfaction % – P&GSS survey
1	2.15	n/a
2	2	53%
3	3	80%
4	2.1	70%
5	1.9	72%
6	2.2	42%
7	1.8	80%
8	1.65	83%
9	2.6	83%
10	2.75	76%
14	1.6	64%

GAMOP: *a measure of real quality (through provision) by ward – wards with the highest quality:*

Ward	Local Need Area	Average score - provision
Westbury	10	2.8
Cotham	6	2.8
Clifton East	9	2.7
Clifton	9	2.7
Henleaze	10	2.7
Stoke Bishop	9	2.6

Results from the P&GSS General Survey and GAMOP: *a comparison of measured quality (through provision, condition and maintenance) with user satisfaction by Local Need Area:*

Local Need Area	Average quality	Satisfaction % – P&GSS survey
1	2.05	n/a
2	2.3	53%
3	2.25	80%
4	2.15	70%
5	2	72%
6	2.2	42%
7	1.9	80%
8	1.7	83%
9	2.3	83%
10	2.5	76%
14	1.56	64%

GAMOP: *a measure of real quality (through provision) by ward – all wards:*

Ward	Local Need Area	Average quality - provision
Ashley	6	1.9
Avonmouth		1.6
Bedminster	2	2.2
Bishopston	7	1.9
Bishopsworth	2	2.4
Brislington East	3	2.2
Brislington West	3	2.4

Cabot	6	2.2
Clifton East	9	2.7
Clifton	9	2.7
Cotham	6	2.8
Easton	6	2.0
Eastville	5	2.1
Filwood	14	1.5
Frome Vale	5	2.2
Hartcliffe	1	2.1
Henbury		1.9
Hengrove	15	2.0
Henleaze	10	2.7
Hillfields	5	1.6
Horfield	8	1.6
Kingsweston		1.8
Knowle	14	1.7
Lawrence Hill	6	2.1
Lockleaze	7	1.4
Redland	7	2.2
Southmead	8	1.7
Southville	2	2.5
St George East	4	2.2
St George West	4	2.0
Stoke Bishop	9	2.6
Stockwood	15	1.8
WHIN	14	1.6
WHIT	1	2.2
Westbury	10	2.8

## Equalities Impact Assessment

Research data, summaries and findings for the Assessment are contained on the full Impact Assessment report and are not repeated here. Sub-reports to the Impact Assessment provide data on any differential impact by race, disability, sexuality, age, gender and Neighbourhood Renewal areas.

Recommendations from the reports on different groups have been extracted from the Impact Assessment are incorporated into the next section of this consultation report.

The Assessment finds that existing Bristol Parks' services do not adversely impact on any equalities group through discriminatory practices. However the Assessment clearly identifies that some vulnerable groups and individuals expect and need more from Parks services than currently delivered in order for them to more easily use them.

The Assessment finds that individuals and communities identified by race, gender, disability and age have needs that are not being met by existing Bristol Parks' services.

The Assessment finds that for older people and women many particular needs can be met through the adoption of general policies and measures to improve the perception of safety in parks, by raising their quality and by raising the quality of their management and maintenance.

The Assessment finds that *positive measures* additional to adopting general policies to improve safety, quality and maintenance are needed to meet the needs of Black and

other minority ethnic communities and people that describe themselves as having a long-term limiting illness, health problem or disability and that these should be supported by an appropriate action plan and performance measurement. Positive measures would act to improve the promotion of good relations with these communities. This work will add benefit to Bristol City Council's compliance with the Race Relations (amendment) Act 2000 and the Disability Discrimination Act (1995).

The Assessment finds that there is insufficient evidence to conclude whether current, pre-Strategy services are likely to be having a differential impact on lesbian, gay or bisexual people but differential impact is unlikely.

The Assessment finds that specific, positive actions and measures are needed to meet the needs of young people. The Assessment finds that there is insufficient evidence to conclude whether current, pre-Strategy services are having a differential impact on young people.

This report has already highlighted the influence of Quality of Life data in determining this and the fact that small sample sizes indicate a need for caution. However the substantial new research carried out has helped generate the overall impact finding.



## Quality of Life Survey Report

### **Summary**

An evaluation of the constant data themes from Quality of Life surveys held in 2002, 2003 and 2004 is provided here. There are many individual patterns in the data but it is noticeable that over time general satisfaction levels across different areas of the city, expressed as wards, remain similar, and hence the wards in which respondents are most satisfied remain the same. Within the data, annual differences of 10% in response levels are common without a known change in service conditions i.e. the change in the population sample is the likely cause.

When amalgamated Quality of Life data from 2002, 2003 and 2004 is considered at ward level, it was found that there was a strong correlation between respondents' satisfaction with access, satisfaction with amount and quality of green space and also with frequency of visits. As further analysis of the results has shown that satisfaction with amount does not appear to reflect what is on the ground with regard to green space provision locally, the conclusion must be that quality is the driving factor for respondents choices i.e. those living in areas with good quality parks will perceive that access to them is easier, there is more of it (quantity) and they will visit them more. This supports the principle of a raised quality standard for Bristol's green spaces and brings confidence that this will result in greater and more frequent use of them.

The indication from Quality of Life data that, year on year, the public's satisfaction with quality is very different in different areas of the city further supports the need for a

green space quality standard within the Parks and Green Space Strategy. The veracity of this data is proven when compared with Bristol's objective quality assessment data gathered during an assessment of all green spaces in the city for the Strategy.

When Quality of Life survey data from 2002, 2003 and 2004 is considered, there appears to be a gradual increase in satisfaction of the quality of green spaces over time. Satisfaction with the different types of space given in the 2004 survey varies with the greatest satisfaction being for 'landscaped parks and gardens' and the least satisfaction with 'wildlife sites'. The identified relationship between satisfaction and frequency of visits is supported by the fact that 'landscaped parks and gardens' are visited more often.

The most frequent visitors to parks are those under 45 years of age. Groups consistently visiting less frequently are those with a long-term limiting illness or disability and those that live in Council housing. The latter finding may have a cause in the quality of parks in areas where council house occupancy is higher.

An interesting finding but perhaps to be expected is that more older people are happy with the amount of parks despite visiting them less and feeling that access to them is more difficult. This is a converse relationship between access, amount and frequency of visits than found when all respondents are considered. Those respondents with a long-term limiting illness or disability also perceive that parks are more difficult to access and there is likely to be a link here

with older people - proportionally more older people are likely to have a limiting illness or disability.

Satisfaction with the amount of green space in Bristol is generally high from the Quality of Life survey. However there are disparities by area with some areas being more satisfied and others less so. The disparity is not nearly as great as that with perceptions of the quality of parks however.

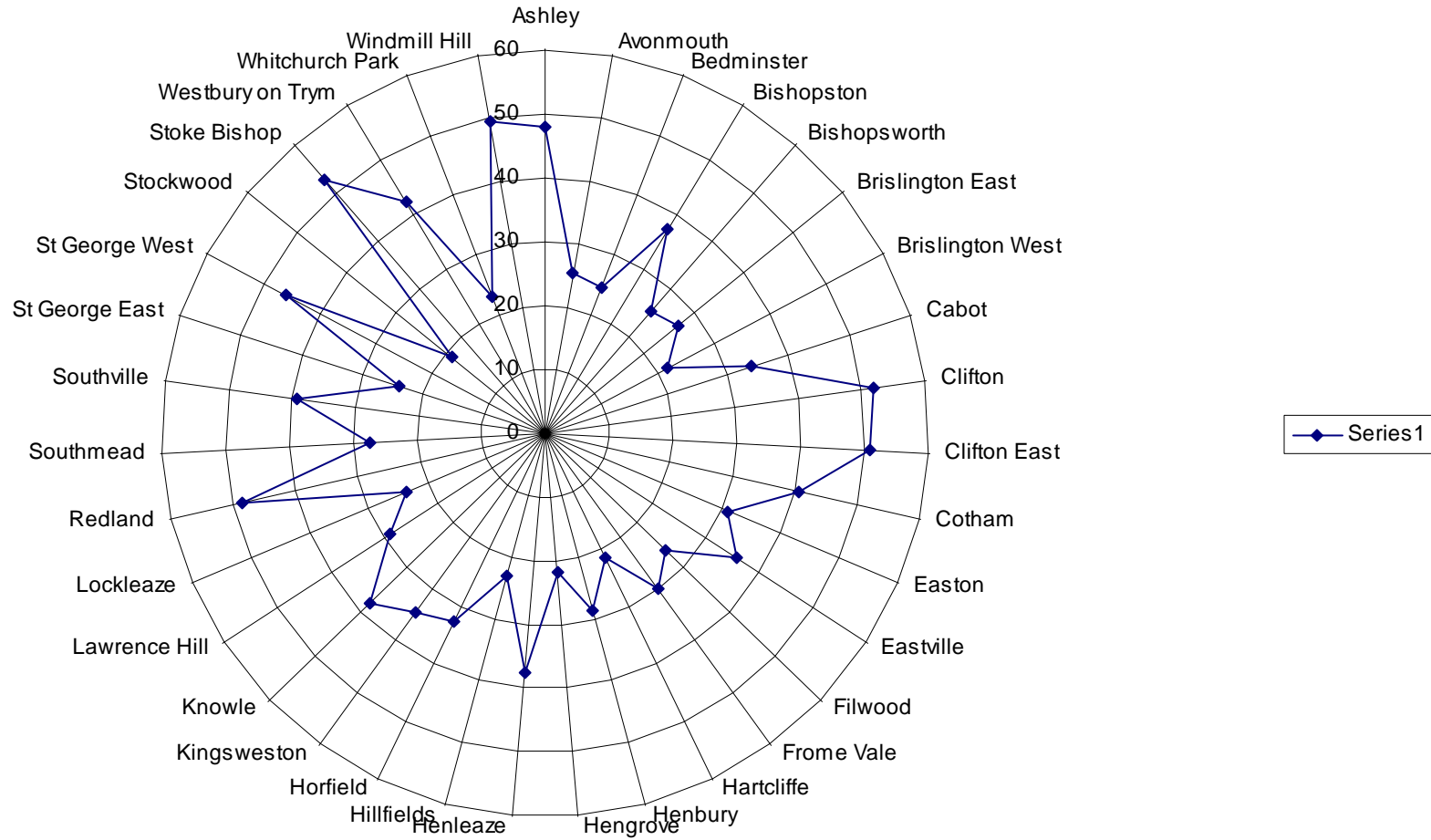
The type of space that respondents feel they need more of in Bristol is a wildlife site followed by green routes. This supports the finding that people feel that they don't live near to either of these types space. Only a third of respondents feel that they need more 'green open space' and 'playing fields'.

With regard to facilities in parks, the 2004 Quality of Life survey highlighted the following results, with the most important facilities being practical features such as benches, bins and dog bins:

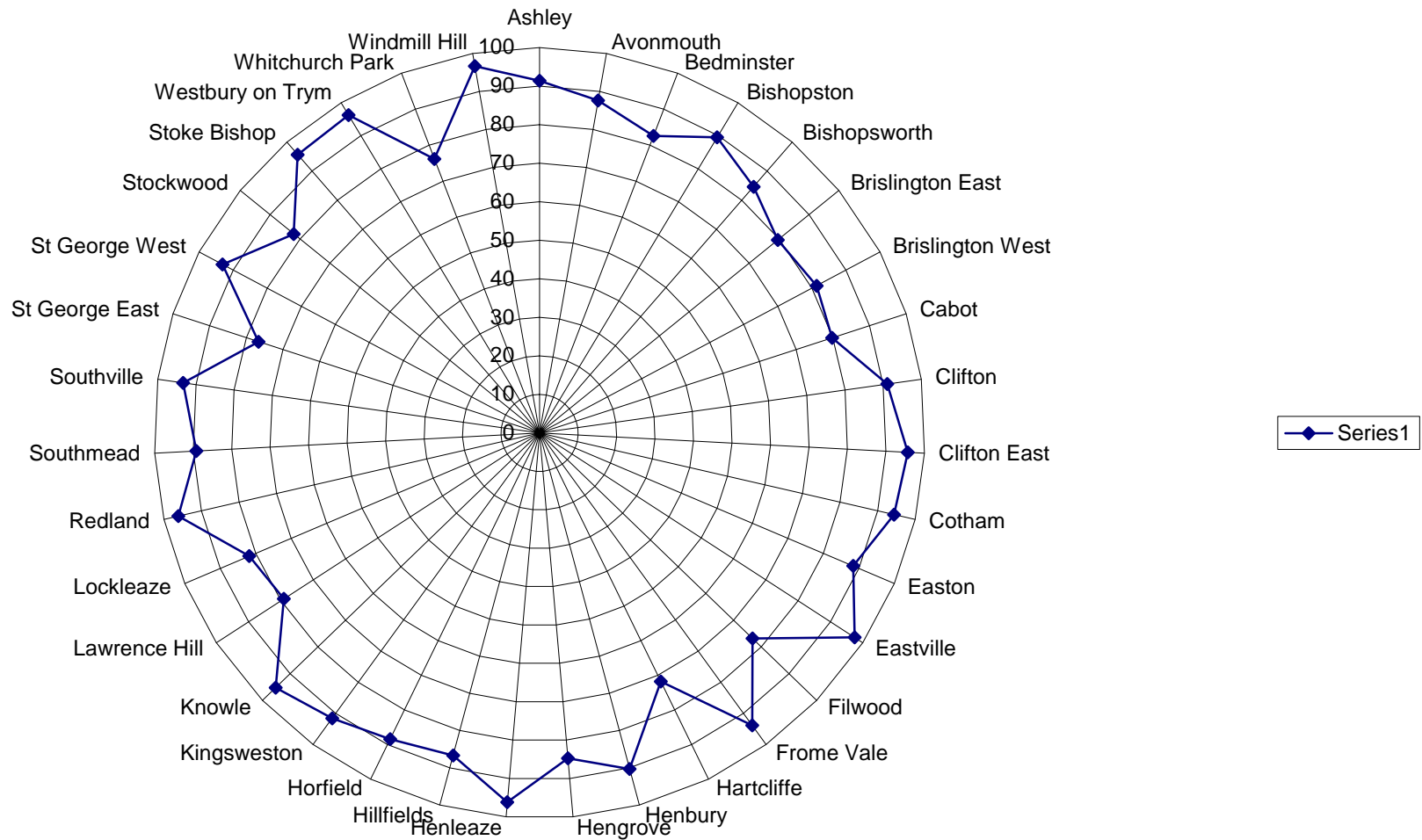
Type of space	Most important - % responding
Practical features	75.1
Trees	68.3
Toilets	58.6
Children's playground	56.7
Young people's facilities	41.4
Sports pitches	36.1
Available refreshments	32
Staff presence	31.9
None	3.2

# Quality of Life Reports: Supporting evidence

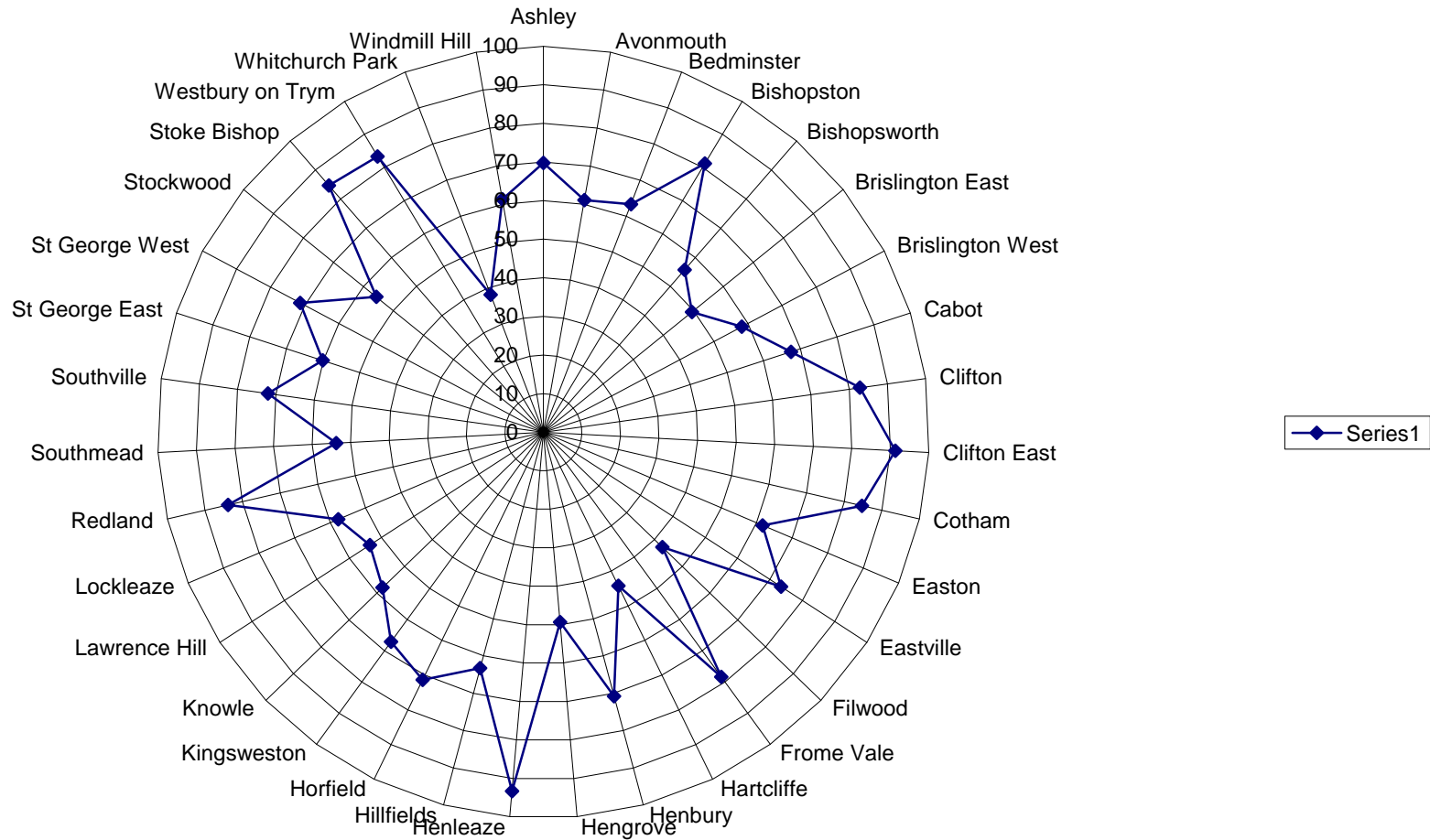
Percentage of those visiting once a week or more (average Of 2002/3/4)



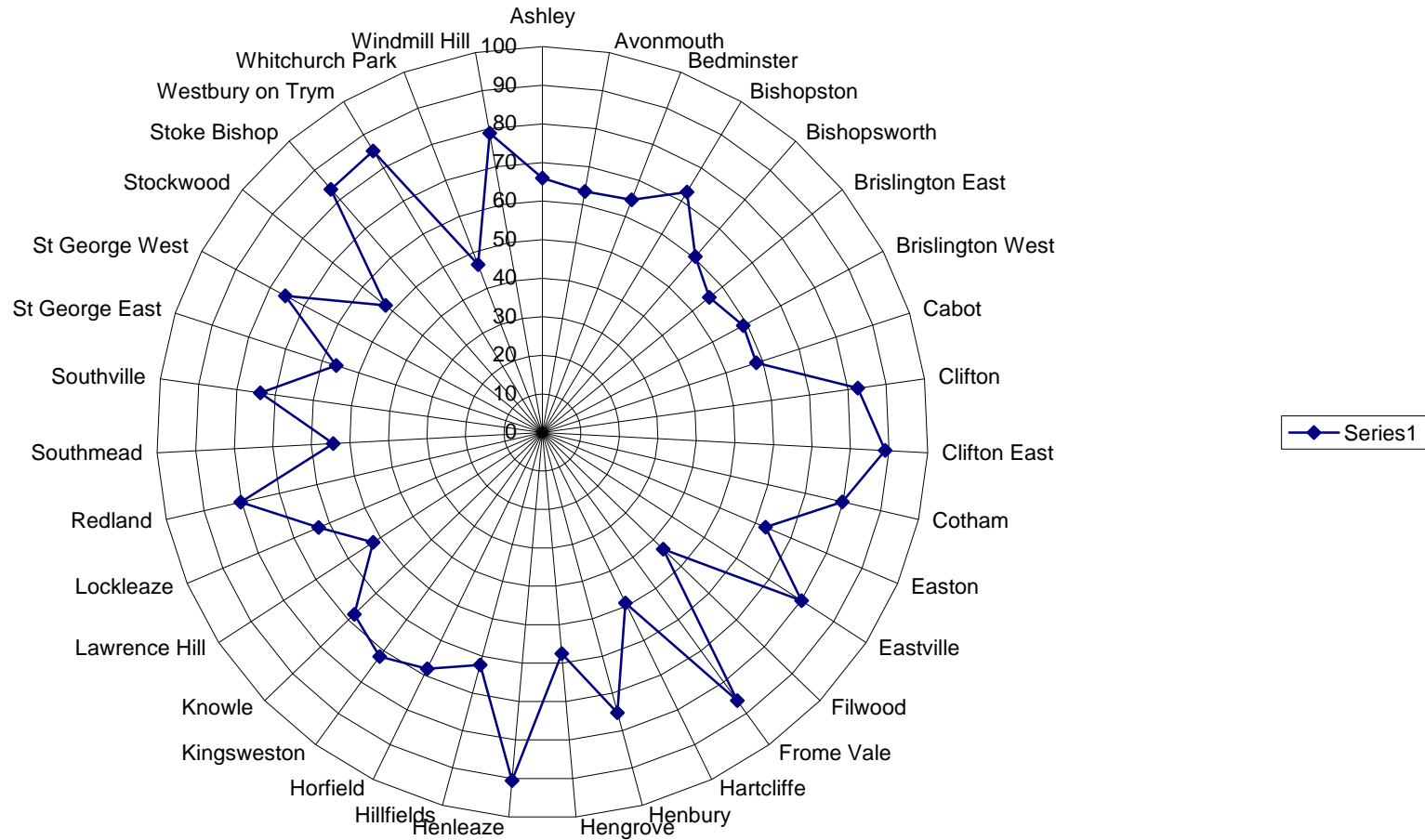
Percentage of those finding it 'easy' to access green spaces (average of 2002/3/4)



Percentage of those satisfied with the quality of local parks (average 2002/3/4)



Percentage of those satisfied with the amount of local parks (average 2002/3/4)



*Accessibility of parks and green spaces:*

- Accessibility by Age – responses are consistent across the three years, with over 74 year olds experiencing the most difficulty accessing parks. However, those finding it difficult have lessened from 17.3% in 2002, to 11.2% in 2003 and 8.3% in 2004.
- Accessibility by limiting disability - there is consistency through the three years that people with a limiting disability find it slightly more difficult to get to an open space than those without.

*Quality of parks and green spaces:*

- There is a general pattern throughout the three years that there is a steady increase in satisfaction with the quality of parks across wards.
- The following table shows the overall satisfaction or dissatisfaction with the different types of Green Space:

Type of Space	Satisfied	Dissatisfied
Landscaped Parks and Gardens	43%	9.4%
Playing Fields	37.5%	10.8%
Wildlife Sites	28%	17.6
Green Open Space	39.4%	11%
Green Routes	31.9%	15.7%

- Consistently from 2002 – 2004, over 50% of the population in Bishopsworth, Filwood, Hartcliffe and Whitchurch Park are dissatisfied with Children’s Playgrounds.

*Amount of parks and green spaces*

- Overall, satisfaction with the amount of parks is consistent, with approximately 2/3 of people satisfied and 1/5 dissatisfied.

- Consistently across the three years, slightly more of the older age groups are satisfied with the amount of parks.
- Consistently, slightly fewer people with a limiting illness or disability are satisfied with the amount of parks.
- The following table indicates whether people feel the need more, less or the same amount of different types of space near to where they live:

Type of Space	More	Less	Same Amount
Landscaped Parks and Gardens	43.4%	1%	55.6%
Playing Fields	36.8%	1.9%	61.2
Wildlife Sites	60.8%	1.1%	38.1%
Green Open Space	35.3%	1.8%	62.8%
Green Routes	53.4%	2.7%	43.9%

- The following table shows the percentage of people living near different types of open space:

Type of Green Space	Percentage Living Near
Landscaped Parks and Gardens	50.2%
Playing Fields	45.9%
Wildlife Sites	19.6%
Green Open Space	53.9%
Green Routes	29.6%

*Frequency of visits to parks and green spaces:*

- Consistently over the three years, under 45 year olds are the most frequent visitors to parks, with the older age groups visiting progressively less frequently.

- Consistently from 2002 – 2004, those with a limiting long term illness or disability visit parks less than those without.
- Consistently across three years, those who live in Council housing visit parks less frequently.
- Green Open Spaces and Landscaped Parks and Gardens are the most frequently visited types of space with over 50% visiting at least 2 – 4 times per month.
- Frequency of visits to Children’s Play Grounds for all respondents 1-6 times per year increased to 22.3% in 2003 from 11.9% in 2002.
- Frequency of visits to Children’s Play Grounds by under 14 year olds has increased between 2002 and 2003.

The table shows that the most important features for people to have in an open space are practical features such as benches, bins and dog bins.

*Important facilities in parks and green spaces:*

- The following table show what aspects are most important to people within an open space (2004 survey only):

Type of space	Most important
Practical features	75.1
Trees	68.3
Toilets	58.6
Children's playground	56.7
Young people's facilities	41.4
Sports pitches	36.1
Available refreshments	32
Staff presence	31.9
None	3.2



## 6. Public research recommendations to inform policy

### Research gaps

The broad scope of the Parks and Green Space Strategy meant that the consultation focussed on Bristol Parks' core service of providing and maintaining multifunctional parks and green spaces and also informing the development of new green space provision standards for Bristol. The research objectives are given in more detail on pages 5 and 6.

A decision was made early in the process not to attempt to inform in-depth the future provision of some specific services including sports, allotments, conservation management and tree management. The role parks and green spaces play or may play in health was also not explored to any depth.

Any further research needs regarding the Equalities Impact Assessment are given in the Assessment itself and not covered again here. For the remaining research objectives listed on pages 5 and 6, the main gaps in research were:

- More response overall to the different research methods used is required to enable comparisons between where people live in the city. This is particularly so with the main Strategy general survey. It has not been possible to do this and hence, overall, the research gives us the view of 'the public' as a whole. This has meant that some priorities in different areas have not been able to be identified in any detail. It is worth noting however that, in essence, user needs

with regard to Bristol Parks' services are not complex and the research does show that different groups consistently raise the same concerns and issues.

- An improved response to the Strategy general survey from some areas of the city – Hengrove, Stockwood, Hartcliffe and Withywood – would have been beneficial. Focus groups did take place in Hengrove and Withywood but these concentrated on specific themes.
- Patterns of use – more data would have been preferred on people's motivations for visiting green spaces and the values they attach to them. Also the public's overall opinion of the role green spaces play in their impression of the place they live locally and Bristol.

A consultation tool designed to find out what quantities of the different types of green space people preferred and to what level of quality was successful with regard to quantity. It is thought that the results regarding trade-offs of quality are not reliable enough to guide policy.

## Recommendations

Target group	Recommendation	Evidence
<p><b>All</b></p>	<p>The Strategy standard for the provision of different types of space should <i>consider</i> the research findings that indicate a support for:</p> <ul style="list-style-type: none"> <li>• A decrease in the amount of Formal Green Space (not formal parks);</li> <li>• A significant increase in the amount of children and young people's space.</li> </ul> <p>Although the data suggests that the provision of fixed sports space should be increased the P&amp;GSS recommendations re review of sports provision should be borne in mind.</p> <p>A draft recommendation for distance thresholds to different types of space are:</p> <ul style="list-style-type: none"> <li>• 15 mins for formal space;</li> <li>• 13 mins for informal space;</li> <li>• 16 mins for sports spaces (see note re target group 'gender' below);</li> <li>• 12 mins for children's and young people's space; and</li> <li>• 18 mins for natural green space.</li> </ul> <p>It is recommended that quality assessment scores through Getting a Measure of Parks (GAMOP) be reviewed to consider:</p> <ul style="list-style-type: none"> <li>• The validity of scores for 'safety';</li> <li>• The validity of scores for 'setting and containment of site';</li> <li>• The validity of scores for 'quality of footpaths for disabled access' and potentially other scores regarding use of a site by disabled persons.</li> </ul> <p>The favourite type of space for respondents is a formal park/public gardens. This is a space that has a greater degree of obvious design and that is multifunctional or has a variety of types of space within it. It is most likely to resemble one of Bristol's existing Victorian parks and incorporate a play facility. Everyone in the city should have easy access to this style of park. The space and its facilities should be maintained at a good level of quality.</p>	<p>P&amp;GSS focus groups</p> <p>P&amp;GSS focus groups P&amp;GSS general survey CD for schools</p> <p>P&amp;GSS focus groups P&amp;GSS general survey</p> <p>P&amp;GSS user site quality assessments</p> <p>P&amp;GSS focus groups P&amp;GSS general survey</p>

	<p>The data suggests that Eastville Park or, more likely, the Frome Valley should be considered as a destination park. In addition, for young people, parks that have wheelchair areas act as destination sites in the same way as Hengrove Play Park.</p> <p>The management of Blaise Estate should reflect the fact that it acts as a significant local resource and needs especially to consider provision for young people.</p> <p>Strategy policy needs to include a programme for the provision of more and <i>better</i> toilet facilities. Toilets should be fully accessible, incorporate children's toilets and policy should consider how they would be maintained at a high level of quality. A key system should be considered for toilets to be accessible by disabled users.</p> <p>The Strategy needs to direct a coherent plan for tackling dog mess and dogs being walked off lead – a particular barrier for many groups including disabled people and parents/carers with young children. The plan should consider some smaller green spaces being dog-free and others having a significant dog-free area. Within any dog-free area should be a site's main attractions e.g. play area, sports space, boating lake etc. Any plan should act on formal parks/public gardens and the city's destination sites as a priority.</p> <p>The Strategy should include an aim to employ more <i>visible</i> on-site staff in the city's parks. The role of the park keeper should be clearly defined to enable them to act to encourage a culture of safety on the site - acting on incidences of crime and anti-social behaviour. The role should also contribute to tackling the problem of dog mess as well as provide highly reactive site maintenance. Park Keepers must be good communicators and receive support and training in understanding the diverse needs of the disabled community. For example the simple act of introducing their presence is vital for visually impaired park users. Bristol Parks should continue to develop partnerships so that the park keeper role should have the express support of other agencies including the police, youth workers and community development workers.</p>	<p>'Once' report P&amp;GSS general survey</p> <p>P&amp;GSS general survey CD for schools</p> <p>P&amp;GSS focus groups P&amp;GSS general survey CD for schools</p> <p>P&amp;GSS focus groups P&amp;GSS general survey CD for schools</p> <p>P&amp;GSS focus groups P&amp;GSS general survey</p>
--	---	---

	<p>Bristol Parks needs to be better at providing quality seating and providing it in the right areas. Seating, and in particular 'sociable' seating e.g. picnic tables, needs to be provided at children's play areas, young people's facilities, sports facilities and Ashton Court/Blaise. The maintenance regime of play areas should reflect the potential conflict between daytime and evening user groups.</p> <p>There is a need to act more quickly on the consequences of vandalism in parks with a priority on repairing facilities that are well used and park/green space entrances (if applicable) – to prevent parks appearing unsafe and unwelcoming.</p> <p>It is recommended that more lighting should be provided in multifunctional formal parks/public gardens and children and young people's facilities as a measure to improve perceptions of safety.</p> <p>In spaces that are large enough, play facilities for older young people should be provided in addition to but separate from play facilities for young children.</p> <p>Access to urban woodland areas and natural green spaces needs to be improved. This includes entrances to these sites and pathways within them. This will help reflect their status as the priority type of green spaces for many people and encourage greater use.</p> <p>The grouping of data into Local Need Areas results in a weakening of its significance and its role in informing decision-making both locally and citywide. Local Need Areas combine data from smaller areas of the city with very different profiles in terms of green space quality, population density and demography. It is recommended that caution be used if considering user information amalgamated into Local Need Areas to guide policy.</p> <p>Bristol Parks should ensure that any park regulations and by-laws are made clearly visible within parks where appropriate.</p>	<p>P&amp;GSS focus groups P&amp;GSS general survey CD for schools 'Once' report</p> <p>P&amp;GSS focus groups P&amp;GSS general survey</p> <p>P&amp;GSS focus groups P&amp;GSS general survey</p> <p>P&amp;GSS general survey 'Once' report</p> <p>P&amp;GSS general survey CD for schools</p> <p>QoL data P&amp;GSS general survey</p> <p>P&amp;GSS focus groups</p>
--	---	---

	<p>The research programme has revealed the common finding that people in less affluent areas of the city do not respond in any reasonable numbers to surveys. In addition, surveys tend to elicit responses from certain 'types' of people – commonly well educated and with at least some prior interest to the subject being investigated/assessed. It is therefore recommended that when making decision on priorities for improvement Bristol Parks works with agencies locally to make contact and record the 'community voice'.</p>	<p>P&amp;GSS general survey QoL data</p>
<p><b>Internal</b></p>	<p>Much of the research data consistently suggests that people do not use and/or value sports space as much as other types of space, or, they do not associate the use of sports spaces directly with Bristol Parks services. It is recommended that a desktop review of the current use, latent demand and provision of sports space be carried out with a view to wider public research if deemed necessary (see other comments re sports provision for target groups gender and Black and minority ethnic groups).</p> <p>It may also be advantageous to ask more in depth questions about how people would like to access urban wildlife conservation areas – though there is much that is implicit from the existing P&amp;GSS data.</p> <p>An analysis of Quality of Life 2004 data indicates that measuring satisfaction in the survey does not provide reliable results. It is recommended that a review of the measurement of satisfaction as a performance indicator be carried out prior to establishing the Strategy's 20-year improvement programme.</p> <p>A review of Census data 1981, 1991 and 2001 should be carried out to determine whether there is consistency in some city wards having higher population of children and young people than others. In 2001, the wards with the highest populations of children under the age of 14 are Filwood, Southmead, Kingsweston, Hartcliffe and Easton.</p> <p>It would be useful to compare the P&amp;GSS research with other research to provide a</p>	<p>P&amp;GSS general survey</p> <p>P&amp;GSS general survey</p> <p>QoL data</p> <p>Census 2001 data</p> <p>P&amp;GSS general survey</p>

	user profile of the Hengrove Play Park facility with particular attention to differences between age ranges.	CD for schools 'Once' report
<b>Black and other minority ethnic communities</b>	<p>The application and interpretation of the new Bristol distance standard should consider the distribution and access requirements of Bme communities. This particularly applies to the wards of Lawrence Hill, Ashley, Eastville, Easton and Cabot.</p> <p>Bristol Parks should develop new contacts and networks with different Black and minority ethnic communities across the city in order to improve public consultation practice and develop working partnerships.</p> <p>Greater consideration to the different needs of BME communities with regard to urban woodland areas, Local Nature Reserves/wildlife areas and sports spaces may act to increase use of these spaces by these communities. A policy and practice of introducing BME communities to urban woodland areas, Local Nature Reserves/wildlife areas, sports spaces and heritage estates should be part of this.</p> <p>A review of the suitability, accessibility and quality of sports facilities with regard to the needs of ethnic minorities is advised. This should include booking procedures and information supplied with regard to them. Targeting of ethnic communities, particularly Black African communities is required. The evidence suggests that many BME teams are happy to pay 'expensive' costs for facilities that can be regarded as safe, secure, easily recognisable and of high quality.</p> <p>A review of the objectives of parks events funding should take place and consider the user needs of younger people and minority ethnic communities. More opportunities to hold events for these groups should be created.</p> <p>A review of the support offered for communities and community groups to hold events in parks is advised. A review should consider more 'hands-on' support to help</p>	<p>P&amp;GSS general survey</p> <p>P&amp;GSS focus groups P&amp;GSS general survey</p> <p>P&amp;GSS focus groups P&amp;GSS general survey</p> <p>P&amp;GSS focus groups</p> <p>P&amp;GSS focus groups P&amp;GSS general survey</p> <p>P&amp;GSS focus groups P&amp;GSS general survey</p>

	<p>put on events/festivals and the promotion of the suitability of parks for the wider cultural calendar of celebrations and remembrances.</p>	
	<p>Consultation on more appropriate on-site information and signage for different BME communities should take place.</p>	<p>P&amp;GSS focus groups</p>
	<p>Information in different languages is required on-site in parks and in portable form (leaflets etc.) – who to call if there is a problem – especially regarding safety but cleanliness too. Also, people visit sites that aren't near to where they live so this is needed across the city, though it would be sensible to consider destination sites initially.</p>	<p>P&amp;GSS focus groups</p>
	<p>Provide information on Bristol Park's services including the location and a description of parks and green spaces. Deliver this information to focal centres for different ethnic communities (group or site based).</p>	<p>P&amp;GSS focus groups</p>
	<p>Evaluate the quality through GAMOP of facilities, noticeboards and play equipment in areas with high BME populations.</p>	<p>P&amp;GSS focus groups</p>
	<p>Adopt a programme of introductions to members of different ethnic communities to parks and green spaces in the city.</p>	<p>P&amp;GSS focus groups</p>
	<p>Introduce awareness training for staff on the different needs and experiences of ethnic groups with regard to parks and green spaces and Bristol parks' services.</p>	<p>P&amp;GSS focus groups P&amp;GSS general survey</p>

<p><b>Gender</b></p>	<p>A note should be made that if the distance threshold for play areas for young children is further than 10 minutes it will begin to have a deleterious effect on men taking their children (of an age that need accompanying) to play. It is recommended that the given distance of 12 minutes, derived from a range of data, should not be exceeded.</p> <p>A note should be made that a distance threshold that increases the distance to travel to sports spaces than currently exists is likely to have a differential impact on men. Approx. 50% men are likely to drive to a sports space if it is more than 10 minutes from their home. This rises to 70% after 15 minutes (for women it is closer to 50%).</p> <p>Men and women use all different types of space. For women users, their personal safety is their primary concern and the design of spaces should reflect this.</p> <p>Play areas are an important resource, especially for women, and their provision should be considered alongside other site facilities and services particularly toilets, pathways, entrances, seating, car parking and park keepers:</p> <ul style="list-style-type: none"> <li>• If play areas are provided they should be provided in formal settings where maintenance is at a level where it assists in creating and maintaining a feeling of safety through more regular and responsive management than currently provided.</li> <li>• Where play areas are provided, park/site entrances should be fully accessible to pushchairs and wheelchairs with good quality pathways to the play area from site entrances. Pathways should ideally lead to a car park or parking area.</li> </ul> <p>A review of the suitability of sports spaces for women should take place alongside consultation with women's groups specifically on sports provision and user need.</p>	<p>P&amp;GSS general survey</p> <p>P&amp;GSS general survey</p> <p>Bristol Women Say data QoL data</p> <p>Bristol Women Say data QoL data P&amp;GSS focus groups</p> <p>P&amp;GSS focus groups Bristol Women Say data</p> <p>P&amp;GSS focus groups</p> <p>P&amp;GSS general survey</p>
----------------------	--	---



	<p>The provision of sports facilities is important for male users of green spaces and use of these is a key reason for men visiting parks.</p>	<p>P&amp;GSS general survey</p>
<p><b>Young people</b></p>	<p>Within the new Bristol provision standards the provision of play facilities for children and young people should reflect the population of that community in an area. The population density of children and young people should work closely with minimum distance thresholds to determine overall provision locally.</p> <p>The social role of all local parks and green spaces for young people together with the fact that they are more frequent users of them generally means that the importance of involving young people in proposed changes to green spaces regardless of size and quality cannot be overstated. It is recommended that Bristol Parks investigates how it may work better with young people at a local level and how it communicates with them regarding proposed changes at a citywide level and locally. Young people's input on the implementation of any 10-year or similar improvement programme would benefit services.</p> <p>The stand-out <i>outdoor</i> priority activity for young people aged 8-12 years is 'having a kick-a-bout'. It is a clear 1<sup>st</sup> and 2<sup>nd</sup> priority and 'ball games' and 'running around games' are the most common type of game played. In terms of providing services for this age range young people have expressed their priorities as:</p> <ol style="list-style-type: none"> <li>1. Kick-a-bout areas and places for sport;</li> <li>2. Places to ride a bike;</li> <li>3. Equipped children's play areas;</li> <li>4. Skateboarding areas;</li> <li>5. 'Natural facilities' e.g. water, trees and shrubs.</li> </ol> <p>All of these activities are relevant to parks and green spaces but when asked explicitly to put facilities in their ideal park young people chose:</p> <ol style="list-style-type: none"> <li>1. Play area;</li> <li>2. Toilets;</li> <li>3. Picnic benches;</li> </ol>	<p>Census 2001 data</p> <p>'Once' report</p> <p>CD for schools</p>

	<p>4. Refreshments/ice cream van; 5. Football pitch.</p> <p>From research with young people using parks and green spaces, facilities that need to be provided for young people aged between 11-16 years include:</p> <ul style="list-style-type: none"> <li>• Play equipment targeting older young people. The equipment should include swings that are designed for older children to use;</li> <li>• Environments that allow the use of bikes, skateboards and scooters;</li> <li>• Social spaces to sit and talk. This is especially important to meet the needs of young women. Some social spaces should provide some protection from poor weather.</li> </ul> <p>Facilities to be provided for young people that are likely to be aged between 17 and 19 years of age include:</p> <ol style="list-style-type: none"> <li>1. 'Accessible entrances/pathways';</li> <li>2. 'No Dogs Allowed' area; and</li> <li>3. 'Area for events'.</li> </ol> <p>It is recommended that the provision of facilities for young people reflect their need for challenges and to take risks. This should be both in the design and provision of equipment and in the design of the surrounding area.</p> <p>It is recommended that there is regular use of detached workers in parks when new facilities for young people are being considered in order to support the 'ownership' process. It is important to note that the skills of these workers need not absolutely reflect those of youth workers employed by Young People's Services and others.</p> <p>Local spaces are of greater importance to young people than many other park users. The provision of facilities that suit their needs should reflect this. However young people have expressed that they are willing to travel further to reach specialist facilities e.g. a wheels park.</p>	<p>'Once' report</p> <p>P&amp;GSS general survey</p> <p>'Once' report</p> <p>'Once' report</p> <p>CD for schools 'Once' report</p>
--	--	--

	<p>For older young people (approx. 16+ years) there is a strong wish to use motorbikes and scooters in green spaces:</p> <ul style="list-style-type: none"> <li>• It would be beneficial to begin an awareness-raising campaign for young people on the incompatibility of motorised scooters in parks and green spaces and the effect their use has on other members of the public, especially children, older people and disabled people.</li> <li>• Bristol Parks should consider a citywide (and wider with neighbouring authorities) strategy for managing the growth in the use of motorbikes in parks, young people's desire to use them and their debilitating consequences for other park users.</li> </ul> <p>Work to tackle the preconceived notion among some young people that vandalism of new facilities in parks and green spaces is a 'fait accompli' is important. This needs to take place alongside or before improvements are made to green spaces in an area. It is recommended that Bristol Parks works with other agencies and considers using a detached youth work approach focusing on parks use.</p> <p>Priority wards for improvements to quality and play are:</p> <ul style="list-style-type: none"> <li>• Hartcliffe</li> <li>• Whitchurch Park</li> <li>• Brislington East</li> <li>• Stockwood</li> </ul> <p>Other wards for improvement:</p> <ul style="list-style-type: none"> <li>• Filwood</li> <li>• Hengrove</li> <li>• Lawrence Hill</li> </ul> <p>Priority wards for improvements to play only:</p> <ul style="list-style-type: none"> <li>• Bishopsworth</li> <li>• Hillfields</li> </ul>	<p>P&amp;GSS general survey 'Once' report</p> <p>'Once' report</p> <p>QoL (young people's) data</p>
--	--	---

	<ul style="list-style-type: none"> <li>• Lockleaze</li> <li>• Southmead</li> <li>• Southville</li> <li>• St George East</li> </ul> <p>(Note: this data is from 2003 and some improvements in the above wards may already have taken place)</p>	
<b>Older people</b>	<p>Older people use and value urban woodland areas and wildlife areas more than others. Their greater reliance on public transport and willingness to walk only shorter distances to these spaces means that the application and interpretation of the new Bristol distance standard should consider the distribution and access requirements of older people. This most applies in the wards of Bishopsworth, Frome Vale, Henbury, Stockwood and Westbury-on-Trym.</p> <p>The provision of seating in parks along inclines that allows people to take a rest is important as is the provision of picnic benches in quiet, scenic areas away from environments dominated by young people.</p> <p>A place for events and, correspondingly, a bandstand is more important to older people than the wider population.</p> <p>A review of the objectives of parks events funding with regard to the needs of older people would be beneficial. Older people would benefit more from local events as they are more likely to use public transport to travel. Events that may attract older people would be better organised in areas of the city with an above-average older population – Bishopsworth, Frome Vale, Henbury, Stockwood and Westbury-on-Trym wards.</p> <p>Ensure priority facilities for older people are provided in Destination sites.</p>	<p>P&amp;GSS general survey</p> <p>P&amp;GSS focus groups P&amp;GSS general survey</p> <p>P&amp;GSS general survey</p> <p>P&amp;GSS general survey</p> <p>P&amp;GSS general survey</p>

	Far more older people use the bus to get to parks and green spaces than the average. Bristol Parks needs to be more aware of how its green spaces link with the public transport system, especially those spaces that are attractive to older people, and provide information that connects the two.	P&GSS general survey
<b>Neighbourhood Renewal areas</b>	The comparison of GAMOP, Quality of Life 2004 and the 2004 area report from young people does reveal some common wards where there is an 'agreed' assessment that quality is poor and investment is needed. These wards are Hartcliffe, Filwood, Whitchurch Park - followed by wards Lockleaze, Southmead and Stockwood.	GAMOP QoL (young people's) data QoL data
<b>People with physical and mental impairments and/or a long term limiting illness</b>	<p>In summary, Bristol Parks will improve services for disabled people by working in four key areas:</p> <ol style="list-style-type: none"> <li>1. <b>Education and training of staff</b> – to develop a greater awareness of the different experiences and needs of disabled people with regard to parks and green spaces and Parks' direct services.</li> <li>2. <b>Improving safety in parks</b> – improving the perception of safety and security in all different types of green spaces is likely to have a positive differential impact on disabled people.</li> <li>3. <b>Provision of information</b> – improving both the accessibility and targeting of information regarding existing and future park facilities will be beneficial for disabled people.</li> <li>4. <b>Working more closely with disabled people</b> – or groups that represent people who have a long-term limiting illness, health problem or disability.</li> </ol> <p>Bristol Parks' working aim should be to ensure that disabled people have the same opportunities as any other visitor at each of its sites so they can enjoy the natural and historical landscapes of their local environment. Disabled people need green spaces that they can visit without assistance. In order to achieve this Bristol Parks would need to become more proactive in addressing their needs. The principle of least restrictive access should be adhered to – an approach that aims for the highest standards possible for a particular piece of work. Bristol Parks should recognise</p>	<p>P&amp;GSS general survey P&amp;GSS focus groups National guidance</p> <p>P&amp;GSS general survey P&amp;GSS focus groups National guidance</p>

	<p>access as a chain of events that starts, for example, at home where a decision to visit a site or route may be made and where a visitor returns to after visiting the outdoors. Future action plans and priorities should address both barriers to accessing open space that affect all people (e.g. personal safety, security and maintenance) and specific barriers that affect people with impairments or a limiting long term illness.</p> <p>It is important that the need for disabled access to a range of local and destination green spaces is reflected in the interpretation of green space provision standards.</p> <p>It is recommended that Bristol Parks work more closely with a wider variety of groups that represent people with a long-term limiting illness, health problem or disability to understand the diversity of needs and enable better decision-making.</p> <p>It is recommended that when improvements or alterations are proposed for a site, efforts should be made to engage with disabled people living locally before decisions are made so that site changes fit the profile of service users within the community. This needs to become common practice with projects involving new facilities or access changes. The Strategy should recommend whether additional engagement should be the responsibility of staff, led by an individual member of staff or supported by a working group or advisory panel.</p> <p>Recognising that many park improvements are community-led and community-funded Bristol Parks should assess requests from the community for their impact on and the involvement of disabled groups. Bristol Parks should facilitate the participation of locally based disabled people.</p> <p>Bristol Parks should consider introducing play rangers to play areas other than Blaise and Hengrove so that they can prevent intimidating behaviour by young people and work with parents and disabled children to create a safe and non-threatening environment.</p>	<p>P&amp;GSS general survey P&amp;GSS focus groups</p> <p>P&amp;GSS general survey P&amp;GSS focus groups National guidance</p> <p>P&amp;GSS general survey P&amp;GSS focus groups National guidance</p> <p>P&amp;GSS focus groups</p> <p>P&amp;GSS focus groups</p>
--	---	--

	<p>There is a need to hold sessions at Hengrove Play Park for children with a range of physical, mental and sensory impairments in addition to those currently being arranged for autistic children. For some disabled children introductory play sessions should be arranged by play rangers for Hengrove Play Park and potentially other play areas to introduce the facilities. There would be value in both a mixture of segregated and integrated activities being provided for disabled children.</p> <p>An ideal site for most disabled people will be an ideal site for all park users. In general, disabled people may benefit more from clean, fully accessible toilets, open/accessible entrances, even and unobstructed paths, a 'quiet' area, accessible information and interpretation (inc. an information board), an area for events, a pond or stream, a park keeper on-site, picnic benches, and a refreshments van/café. Sites would also benefit from having tactile paving indicating the location of seating, well defined areas and routes within a park to stop people getting disoriented, incorporating sensory improvements to all areas within the park, not just one segregated area.</p> <p>A formal space with its characteristic of good, well-planned design is generally a space well used by disabled people. However this may be a result of other types of space not being as accessible within Bristol. Access audits of a number of different types of site would ascertain this.</p> <p>For visually impaired people and others a mechanism is needed to communicate where parks are and what facilities they have with respect to an individual's home. This would need to be provided in a number of ways but a phone-in information service would be the minimum requirement. This would need to have targeted promotion.</p> <p>One of the key areas to make a significant positive impact on the needs of disabled people is to improve the provision of information. This is with regard to information on services and on parks and green spaces (including facilities and accessible facilities) – both on-site and convenient formats. The following measures have been</p>	<p>P&amp;GSS focus groups</p> <p>P&amp;GSS general survey P&amp;GSS focus groups</p> <p>P&amp;GSS general survey</p> <p>P&amp;GSS focus groups</p> <p>P&amp;GSS focus groups</p>
--	--	--

	<p>suggested:</p> <ul style="list-style-type: none"> <li>▪ There should be better use of traditional media in getting messages across – TV, Radio, Newspapers and website.</li> <li>▪ Information should be sent directly to disabled groups or support groups in an appropriate accessible format if translating facilities aren't available. The support of a community development worker to visit groups and to raise awareness of the information would be valuable.</li> <li>▪ A range of communication methods should be employed, linked with the needs of specific groups with organisations that support disabled people supporting with distribution. Methods should include audio guides, websites, maps of sites outlining facilities, specialist channels – VHS, talking newspapers, widge symbol languages for people with learning difficulties etc.</li> <li>▪ Park Life is a key document and needs to be distributed proactively to disabled groups with information that will be useful to them. This would need to be in a range of formats including audio (on tape), large print, and on the website.</li> </ul> <p>Bristol Parks should adopt a programme of introductions for disabled residents to parks and green spaces in the city to raise awareness of the existence of sites, of how to get to them and of their facilities.</p> <p>Ensure at least one park in each local need area should be made more appropriate for people with a range of impairments - accessible footpaths and toilets, signage and interpretation.</p> <p>The use of motorbikes (and bikes also) in parks is a severe barrier for disabled people and its prevention should be tackled urgently.</p> <p>People experiencing mental / emotional distress benefit from a passive use of busy parks, commonly 'watching' what is going on around them and simply enjoying the environment. There are incidences of parks people being 'moved on' by enforcers (inc. police) when using parks and those administering a park keeper role should be made aware of the more sensitive needs of this group.</p>	<p>P&amp;GSS focus groups</p> <p>P&amp;GSS general survey P&amp;GSS focus groups</p> <p>P&amp;GSS focus groups</p> <p>P&amp;GSS focus groups</p>
--	---	--



	<p>Bristol Parks should provide a guide to disability issues in green spaces and the contact details of support groups and relevant care homes for use by park groups.</p> <p>There is a need to ensure that the increased use of 'conservation cuts' don't act to restrict access to entrances, features or facilities. Long grass is a particular barrier to people with physical impairments.</p> <p>Disabled people rely more on public transport than non-disabled people. As a result their access to different types of parks and green spaces and park experiences is dependent on good transport links to these spaces. This includes bus routes and good access infrastructure from the drop-off point to the site (drop kerbs, quality pavement finishing, ramps, hand rails etc.), access information at the site entrance and its availability before visiting. Recognition of this and partnership working to make sure access work on a site is inclusive of transport to a site is as important as improvement to the site itself.</p> <p>There is need through training for Bristol Parks staff to be more aware of the new Council Environmental Access Standard and the guidance in the BT Countryside for All good practice guide.</p> <p>It would be useful to review the provision of parking facilities and disabled parking bays at key parks and green spaces across the city. An assessment should be made as to whether new provision is required and how existing street provision links with site entrances. Consultation shows that disabled people recommend that a disabled parking bay should be wider than current guidance suggests.</p>	<p>P&amp;GSS focus groups</p> <p>P&amp;GSS focus groups</p> <p>P&amp;GSS general survey P&amp;GSS focus groups</p> <p>P&amp;GSS general survey P&amp;GSS focus groups</p>
--	---	---

