

SEND and Inclusion Strategy 2024-2028 summary

What is our SEND and Inclusion strategy?

Our strategy sets out how our partnership will make things better for children and young people (CYP) with special educational needs and disabilities (SEND) over the next four years.

Who has developed our strategy?

Our partnership has worked together to develop this strategy. The partnership is made up of education, health and social care, as well as Bristol Parent Carers, The Listening Partnership and organisations working in our local communities. Education settings, children and young people with SEND and their parents have also helped us decide what to include.

What is our vision?

We are committed to the Listening Partnership's vision for CYP with SEND in Bristol:

'We have the same hopes and aspirations for our future as all children and young people.'

'We experience many of the same challenges and struggles as other children and young people.'

'We want and have the right to the same opportunities in our lives.'

Our priorities

As a partnership we recognise that we must work together across all services that support children and young people to deliver this strategy. We have set out six priority areas that we will focus on together:

1. Work with children and young people with SEND and their parent carers so we understand what they are good at, what they find difficult and what they need to thrive.

2. Listen to what children and young people with SEND and their parent carers tell us so we can make decisions together as equal partners.

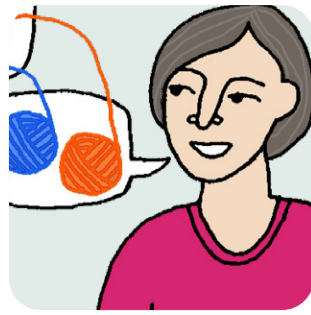
3. Provide our children and young people with SEND with the right help at the right time so they can achieve good outcomes.

4. Develop more high-quality and inclusive educational provision.

5. Prepare our children and young people with SEND for changes in their lives and their futures so they can reach their potential.

6. Work together so children and young people with SEND feel safe and included in their educational settings and their communities.





What are we going to do and why?

- Work with children and young people with SEND and their parent carers so we understand what they are good at, what they find difficult and what they need to thrive...

because it can take a long time for some children and young people's needs to be accurately identified.

- Listen to what children and young people with SEND and their parent carers tell us so we can make decisions together as equal partners...

because positive relationships with families and working together to improve things are key to an effective SEND system.

- Provide our children and young people with SEND with the right help at the right time, so they can achieve good outcomes...

because sometimes children and young people wait a long time to get support or don't get the support they need.

- Develop more high-quality and inclusive educational provision...

because support in our local educational settings is inconsistent and too many children and young people have to go to school or college away from their local community.

- Prepare our children and young people with SEND for changes in their lives and their futures so they can reach their potential...

because transitions between some educational settings and between children's and adults' services can be challenging and our offer for young people who are 16 and over needs to improve.

- Work together so children and young people with SEND feel safe and included in their educational settings and their communities...

because children and young people have told us that they don't feel as safe as they should in their school or in the community and would like to feel understood and valued.

How will we know we have made a difference?

- Identification and assessment is timely, accurate, up to date and involves the right professionals.
- CYP and families are involved in all decisions and plans that affect them and understand what is happening.
- All improvements to the way we do things are coproduced with CYP and parent carers.
- Children and young people get support quicker and this makes a positive difference to their outcomes.

- Mainstream schools are consistently able meet the needs of most children and young people with SEND and there are enough specialist places available locally to meet the needs of children and young people who need them.
- Children and young people feel prepared for their next steps and support and pathways into employment, further education and independent living are clear.
- CYP participate in a range of activities and feel safe, valued and understood in their local communities and schools.

